

Intro to iDigBio

Pamela S. Soltis

Florida Museum of Natural History

University of Florida

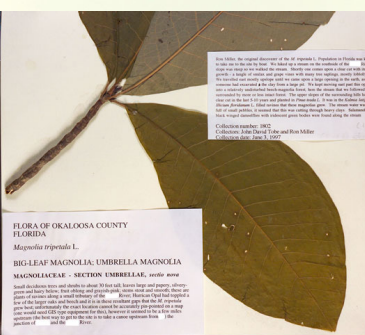


What is iDigBio?

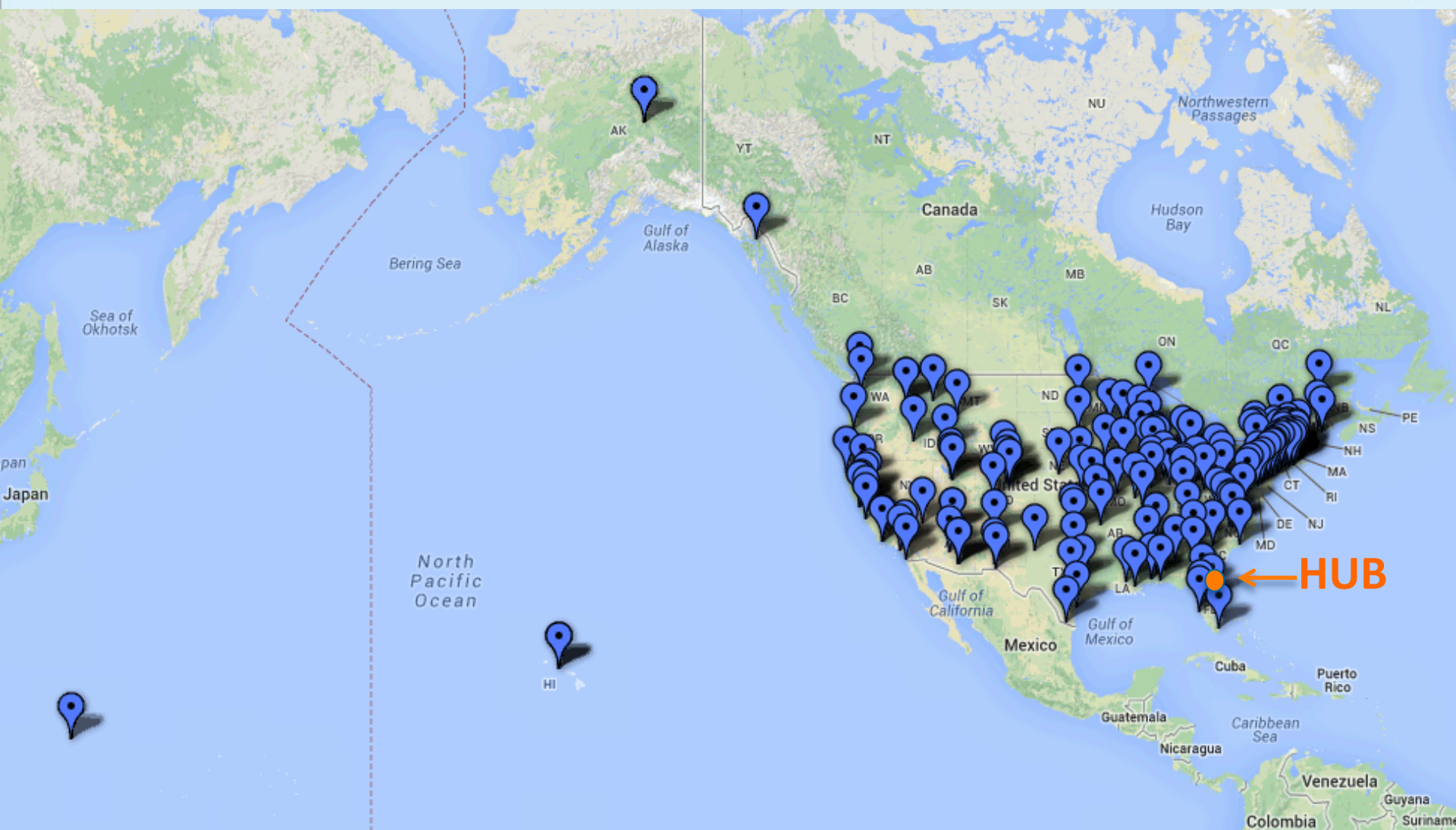
- integrated Digitized Biodiversity collections
 - 'HUB' for NSF's ADBC-funded projects
 - ADBC = Advancing Digitization of Biodiversity Collections
- National resource for digitization of museum collections: 1 billion specimens, 1600 collections
 - Specimen-based
 - Label data, Images, Metadata
 - Associated collections (DNA, calls, etc.)
 - Research, education, conservation, policy
- 10-year effort; began July, 2011

National center for digitization of biodiversity collections
Coordinate digitization and databasing of US collections
Ingest, serve, integrate data:

Localities
Dates
Images



NATIONAL HUB, THEMATIC COLLECTION NETWORKS, AND COLLABORATORS



Ten TCNS and collaborating institutions: 152 institutions in 50 states

Components of iDigBio:

Digitization of Biodiversity Collections
Interactive, Integrative, Innovative

- Digitization
- Cyberinfrastructure
- Research
 - *Access to specimen data: Provide **portal access** to biodiversity data in a cloud-computing environment*
 - *Develop a **computational environment** to facilitate specimen-based integrative biodiversity research*
 - *Develop **research workflows** to anticipate computational needs and linkages*
- Education and Outreach

Components of iDigBio:

Digitization of Biodiversity Collections
Interactive, Integrative, Innovative

- Digitization
- Cyberinfrastructure
- Research
 - *Access to specimen data: Provide **portal access** to biodiversity data in a cloud-computing environment*
 - *Develop a **computational environment** to facilitate specimen-based integrative biodiversity research*
 - *Develop **research workflows** to anticipate computational needs and linkages*
- Education and Outreach

iDigBio Specimen Portal

[About iDigBio](#)[Portal](#)[Technical Information](#)[Education](#)[Log Out](#)[iDigBio Home](#)[Portal Home](#)[Search Records](#)[Tutorial](#)[Publishers](#)[Research Tools](#)[Feedback](#)[▼ psoltis](#)

Start Searching Specimen Records

Press ESC to close auto-complete suggestions.

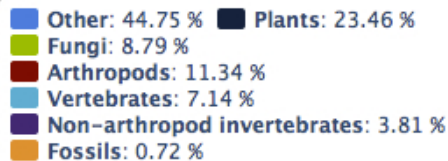
iDigBio Specimen Portal

If you are familiar with our portal's interface, you can start searching [Specimen Records](#).

If this is your first time here, you might consider browsing [our tutorial](#).

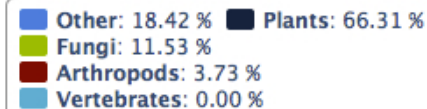
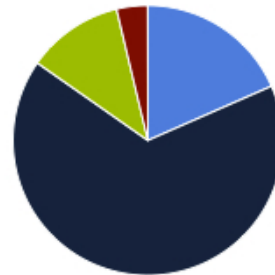
Our data are based on the [Darwin Core](#) and [Audubon Core](#) standards.

Specimen Records by Collection Type



Highcharts.com

Media Records by Collection Type



Highcharts.com

18,315,898

Specimen Records

2,542,121

Media Records

314

Recordsets

iDigBio Specimen Portal

[About iDigBio](#)[Portal](#)[Technical Information](#)[Education](#)[Log In](#) | [Sign Up](#)[iDigBio Home](#)[Portal Home](#)[Search Records](#)[Tutorial](#)[Feedback](#)

Search Records

Full Text Search

 only records with images [Hide Advanced Search](#)

Current Results

Query:

Records: 3

CSV download: [Coming Soon!](#)

Advanced Search

:: Family

 Present Missing

:: Scientific Name

 Present Missing

:: Genus

 Present Missing

:: Country

 Present Missing

:: State/Province

 Present Missing

Specimen Records

[About iDigBio](#)[Portal](#)[Technical Information](#)[Education](#)[Log In](#) | [Sign Up](#)[iDigBio Home](#)[Portal Home](#)[Search Records](#)[Tutorial](#)[Feedback](#)

Full Specimen Record

Taxonomy

Family	Cyperaceae
Genus	Carex
Scientific Name	Carex abacta
Scientific Name Authors	L.H. Bailey

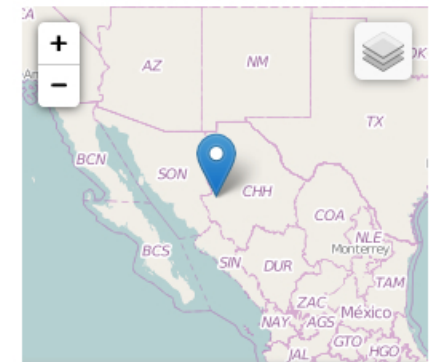
Specimen

Basis of Record	PreservedSpecimen
Catalog Number	DES00015877
Date Identified	2002
Identified By	Miriam Colson Fritts, ARIZ
Institution Code	DES

Record Image



Georeference Data



Leaflet | Map data © OpenStreetMap contributors

The blue marker indicates the location of the current record, the red points are locations of similar specimens in the idigbio system.



Components of iDigBio:

Digitization of Biodiversity Collections
Interactive, Integrative, Innovative

- Digitization
- Cyberinfrastructure
- Research
 - *Access to specimen data: Provide **portal access** to biodiversity data in a cloud-computing environment*
 - *Develop a **computational environment** to facilitate specimen-based integrative biodiversity research*
 - *Develop **research workflows** to anticipate computational needs and linkages*
- Education and Outreach

Other Activities

- Training workshops (G. Nelson, D. Paul, et al.)
 - Digitization
 - Georeferencing
 - Data carpentry
- Teaching – undergrad and grad courses
- Citizen Science (A. Mast & L. Ellwood)
- Public outreach (B. MacFadden)

Interacting with iDigBio

- As part of a TCN
- As a PEN
- Other collaborations; NSF requires collaboration with iDigBio for collections-based projects
- Appliance development
- Tool development and integration
- Hosting a workshop or convening a working group
- Visiting Scholar program
- Education and outreach

Workshop/Working Group Proposal Process



[HOME](#) [ABOUT](#) [ENGAGE](#) [CONTRIBUTE](#) [DISCUSS](#)

Google™ Custom Search

[Wiki](#) | [Appliance Proposal](#) | [Workshop or Working Group Proposal](#)

[Log In](#) | [Sign Up](#)



You must [login](#) to view this form.

Workshop or Working Group Proposal

Thu, 2012-03-01 09:34 -- kevinlove

Please read the following document on the [Workshop and Working Groups Proposal Process](#).

Once you have prepared your proposal, you may use the form below to submit and manage your Workshop or Working Group Proposals.

Upcoming Events

Botany 2012

Saturday, July 7, 2012 (All day)

Updated: Digitizing Plant Collections Workshop

Monday, September 17, 2012 (All day)

Public Participation in Digitization of Biodiversity Specimens Workshop

Friday, September 28, 2012 (All day)

[more events >>](#)

