



Workflows for imaging in the mammal range

Verity Mathis

Mammal Collections Manager



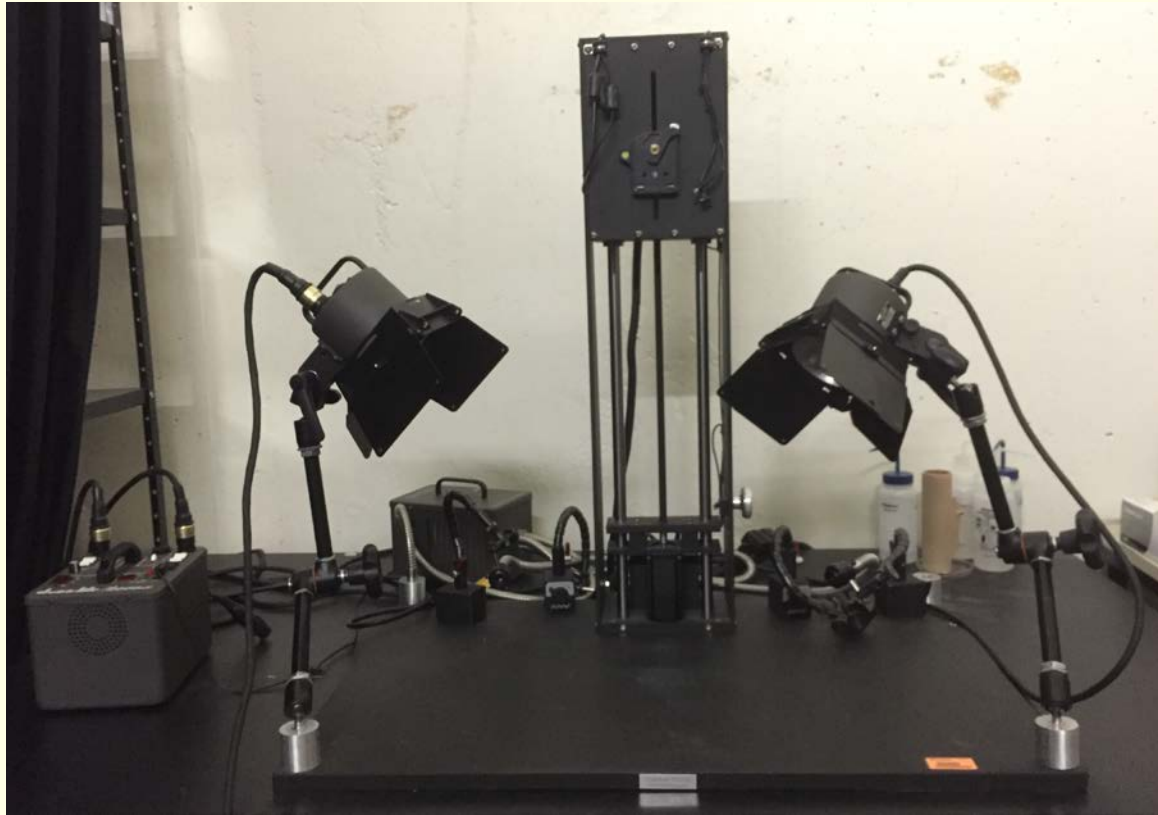
Overview

- Share the equipment available
- Detail what kinds of images can be captured
- Overview the software
- Explain the procedures of getting access

Background

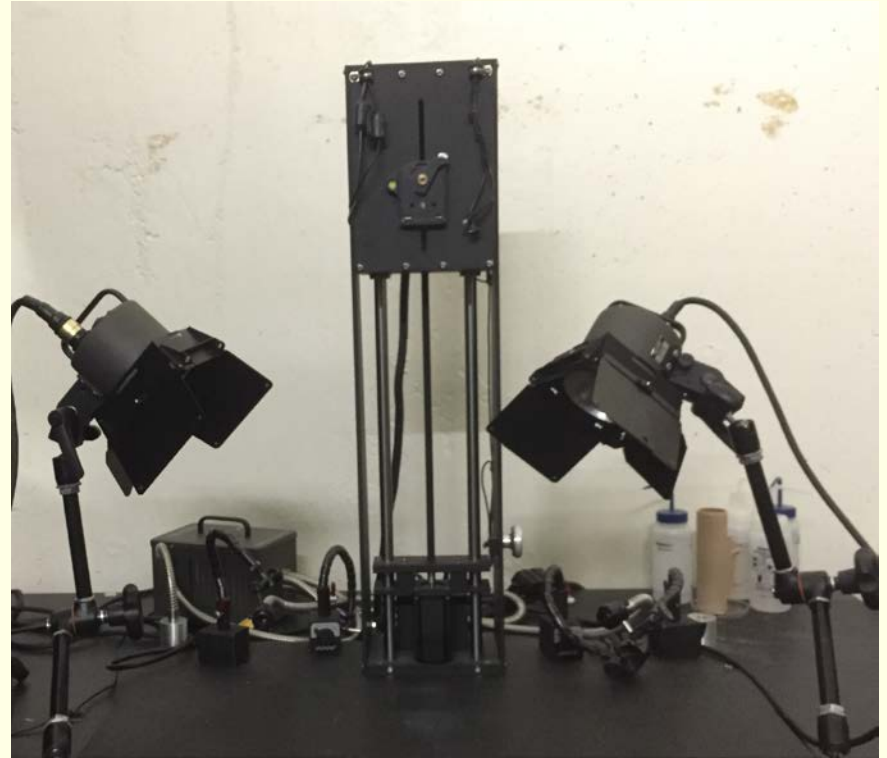
- Camera range located in 331 Dickinson Hall (mammalogy collection)
- Camera range set up in 2010
- Set up provided by Visionary Digital (<http://www.duninc.com>)

Equipment



Cam lift

- Fully automated
- Can travel almost 2 feet
- 2,000 steps per millimeter
- Micro = resolve less than 0.5 microns
- Macro = as large as 60 cm length



Cam lift

- Fully automated
- Can travel almost 2 feet
- 2,000 steps per millimeter
- Micro = resolve less than 0.5 microns
- Macro = as large as 60 cm length



Camera bodies



Camera: Macro

- Canon EOS 5D Mark II
- Good for larger specimens



Camera: Macro

- Canon EOS 5D Mark II
- Good for larger specimens
- 3 lenses
 - 35 mm



Camera: Macro

- Canon EOS 5D Mark II
- Good for larger specimens
- 3 lenses
 - 35 mm
 - 50 mm



Camera: Macro

- Canon EOS 5D Mark II
- Good for larger specimens
- 3 lenses
 - 35 mm
 - 50 mm
 - 100 mm



Camera: Micro

- Canon EOS 40D body
- K2 long distance microscope attachment



Camera: Micro

- 3 Different CF (close focus) objective lenses: CF 2 – CF 4
- 5X and 10X microscope attachments with adaptor

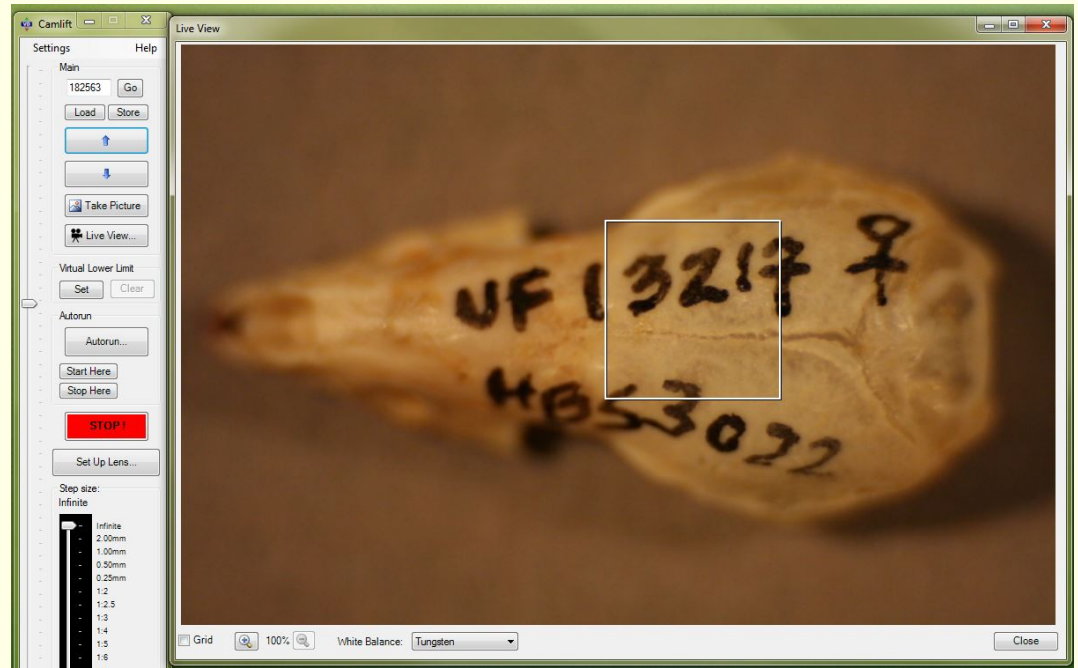




Pictures by Bret Boyd

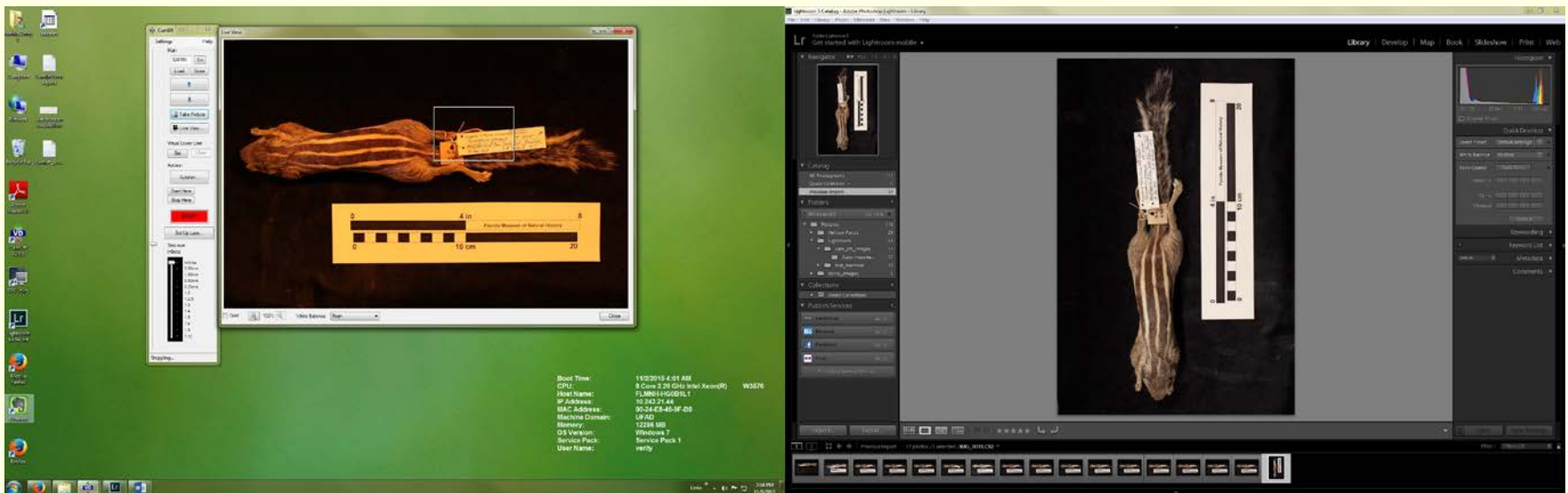
Software used

- CamLift v2.7- setting up and taking images



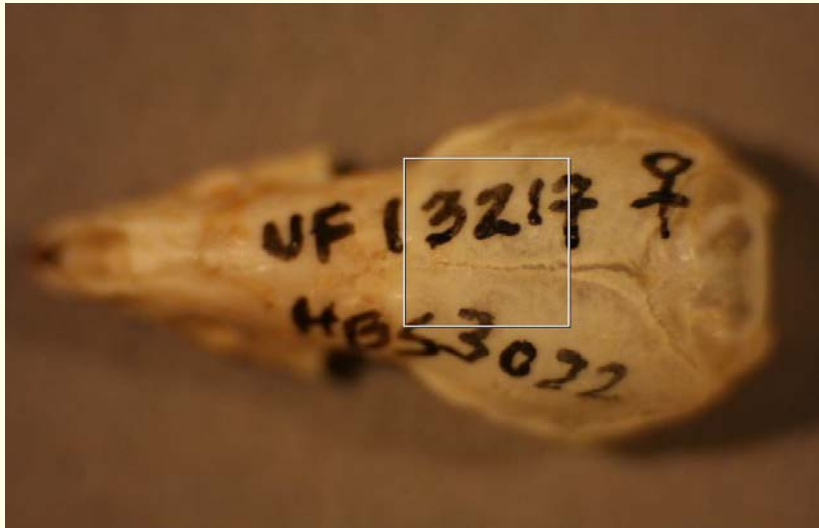
Software used

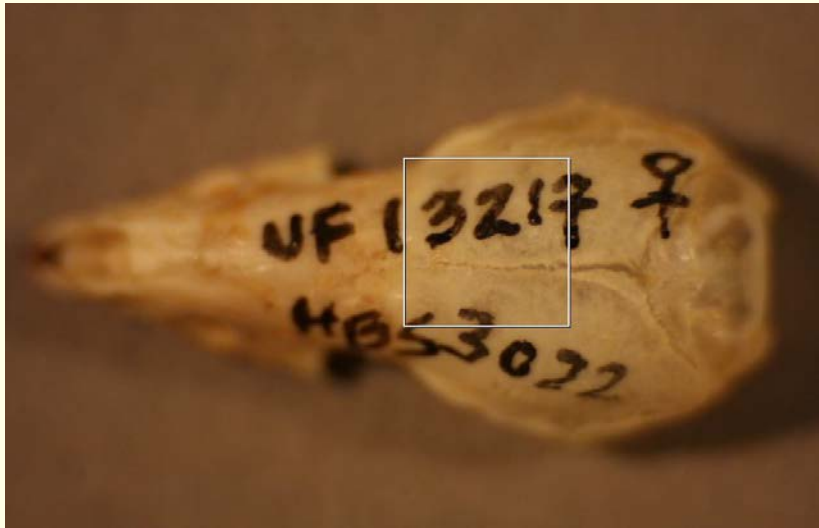
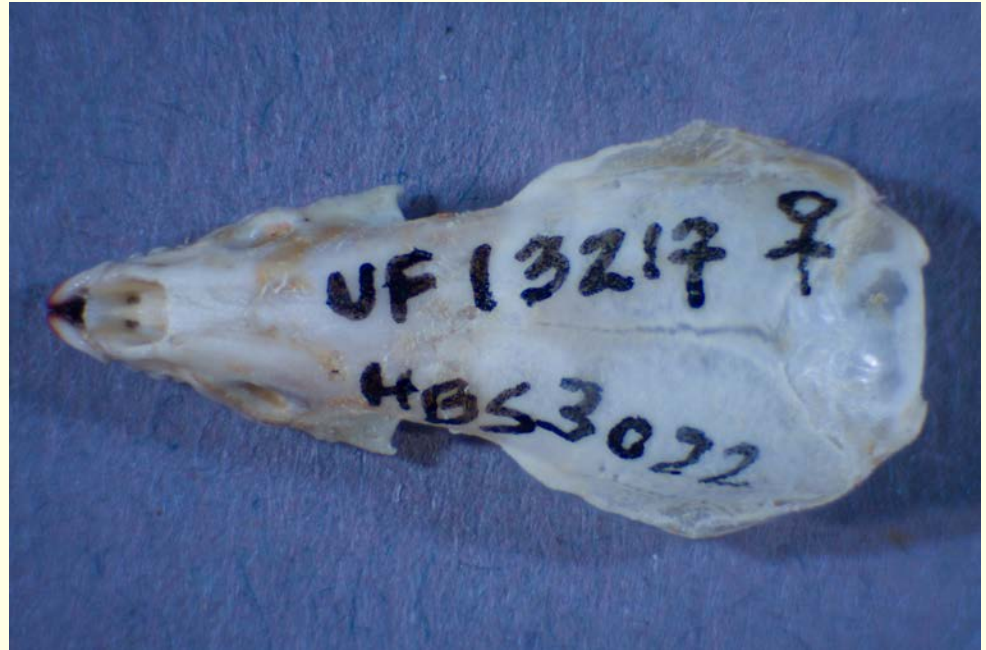
- CamLift v2.7- setting up and taking images
- Adobe Lightroom 5- viewing images



Software used

- CamLift v2.7- setting up and taking images
- Adobe Lightroom 5- viewing images
- Helicon Focus 5.3- stacking images





Software used

- CamLift v2.7- setting up and taking images
- Adobe Lightroom 5- viewing/saving images
- Helicon Focus 5.3- stacking images
- Adobe Photoshop- post-processing

Lightbox



Interior dimensions
18 ¾ in W x 14 in D

Even lighting

Works with any
camera or software

Lightbox



Getting access

- Open to all faculty, staff, & students at the FLMNH
- Must have an FLMNH log-in to use computer
- Contact me at verity@ufl.edu or stop by 331 Dickinson
- Training and assistance
- Google calendar for reservations

FLMNH Camera Range calendar

Today ◀ ▶ October 2016

Print Week **Month** Agenda

Sun	Mon	Tue	Wed	Thu	Fri	Sat	Oct 1
25	26	27	28	29	30		
2	3	4	5	6	7		
9	10	11	12	13	14		
16	17	18	19	20	21		
23	24	25	26	27	28		
30	31	Nov 1	2	3	4		

Events:

- 20: 2:30pm Rachel
- 23: 9am John S- camera, 5pm Rachel
- 25: 10am John
- 26: 2:30pm Rachel
- 27: 2:30pm Rachel
- 30-31: FYI Verity out of town but mammal range should be open

Events shown in time zone: Eastern Time

GoogleCalendar



FLORIDA MUSEUM
OF NATURAL HISTORY

UF UNIVERSITY *of*
FLORIDA