

Workflows: Perspectives from Peabody Entomology



Larry Gall
Systems Office
Yale Peabody Museum

“On The Ground, In-The-Trenches” View



“On The Ground, In-The-Trenches” View



“Extreme Snowboarding, High-Level” View



Institutional History, Scale & Contexts - Strongly Influence Digitization



“Extreme Snowboarding, High-Level” View

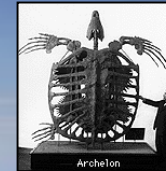
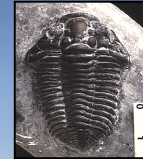
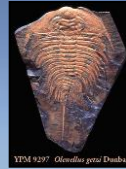
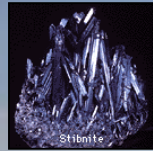
~14 million

Anthropology
Botany
Entomology
Invertebrate Paleontology
Invertebrate Zoology
Meteorites & Planetary Science
Mineralogy
Paleobotany
Scientific Instruments
Vertebrate Paleontology
Vertebrate Zoology



“Extreme Snowboarding, High-Level” View

~14 million

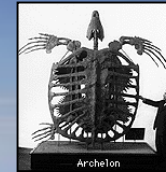
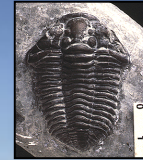
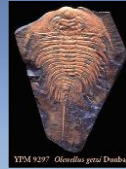
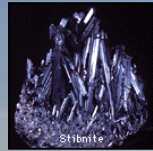


Anthropology
Botany
Entomology
Invertebrate Paleontology
Invertebrate Zoology
Meteorites & Planetary Science
Mineralogy
Paleobotany
Scientific Instruments
Vertebrate Paleontology
Vertebrate Zoology



“Extreme Snowboarding, High-Level” View

~14 million

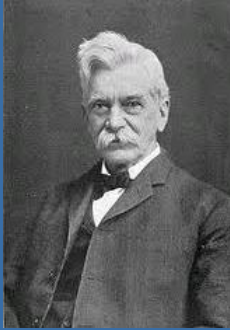


Anthropology
Botany
Entomology
Invertebrate Paleontology
Invertebrate Zoology
Meteorites & Planetary Science
Mineralogy
Paleobotany
Scientific Instruments
Vertebrate Paleontology
Vertebrate Zoology

~1.25 million specimens



Some Yale Entomologists & Museum Facilities



A. E. Verrill
1864-1907



A. Petrunkevitch
1910-1944



G. E. Hutchinson
1928-1971



C. L. Remington
1948-1992



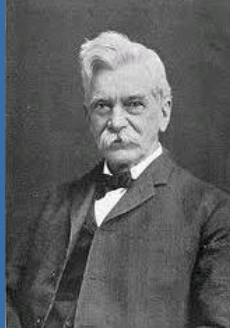
L. E. Munstermann
1993+



A. Monteiro
2004+



Some Yale Entomologists & Museum Facilities



A. E. Verrill
1864-1907



A. Petrunkevitch
1910-1944



G. E. Hutchinson
1928-1971



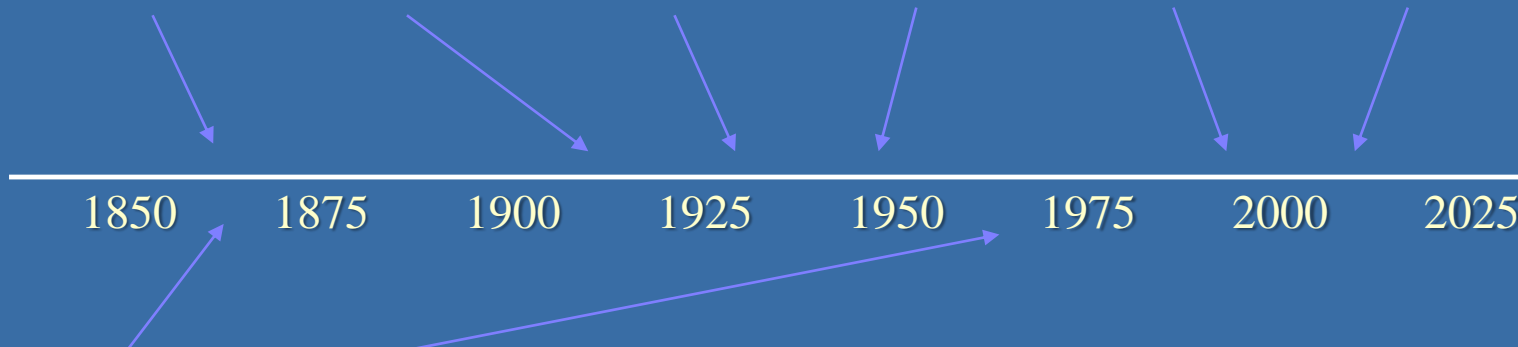
C. L. Remington
1948-1992



L. E. Munstermann
1993+



A. Monteiro
2004+

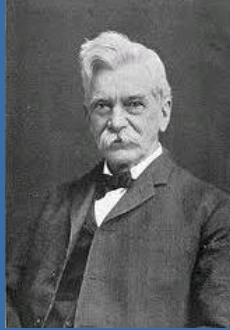


Peabody Museum
1865+



Kline / Osborn Labs
1960-2009

Some Yale Entomologists & Museum Facilities



A. E. Verrill
1864-1907



A. Petrunkevitch
1910-1944



G. E. Hutchinson
1928-1971



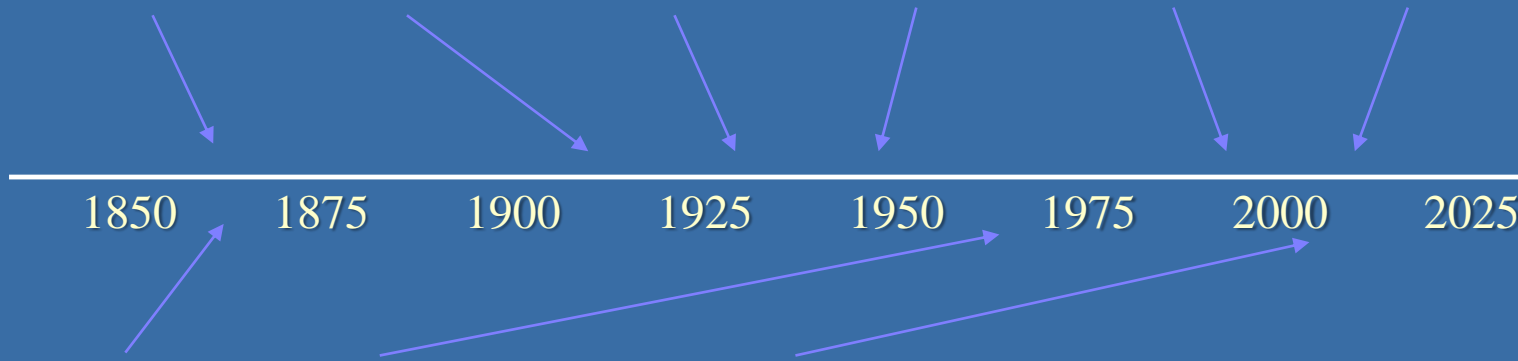
C. L. Remington
1948-1992



L. E. Munstermann
1993+



A. Monteiro
2004+



Peabody Museum
1865+

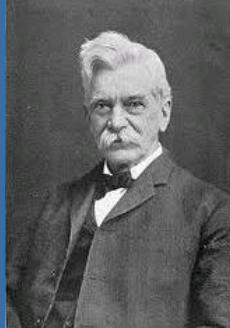


Kline / Osborn Labs
1960-2009



Environmental Science Center (ESC)
2001

Some Yale Entomologists & Museum Facilities



A. E. Verrill
1864-1907



A. Petrunkevitch
1910-1944



G. E. Hutchinson
1928-1971



C. L. Remington
1948-1992



L. E. Munstermann
1993+



A. Monteiro
2004+

1850

1875

1900

1925

1950

1975

2000

2025



Peabody Museum
1865+



Kline / Osborn Labs
1960-2009

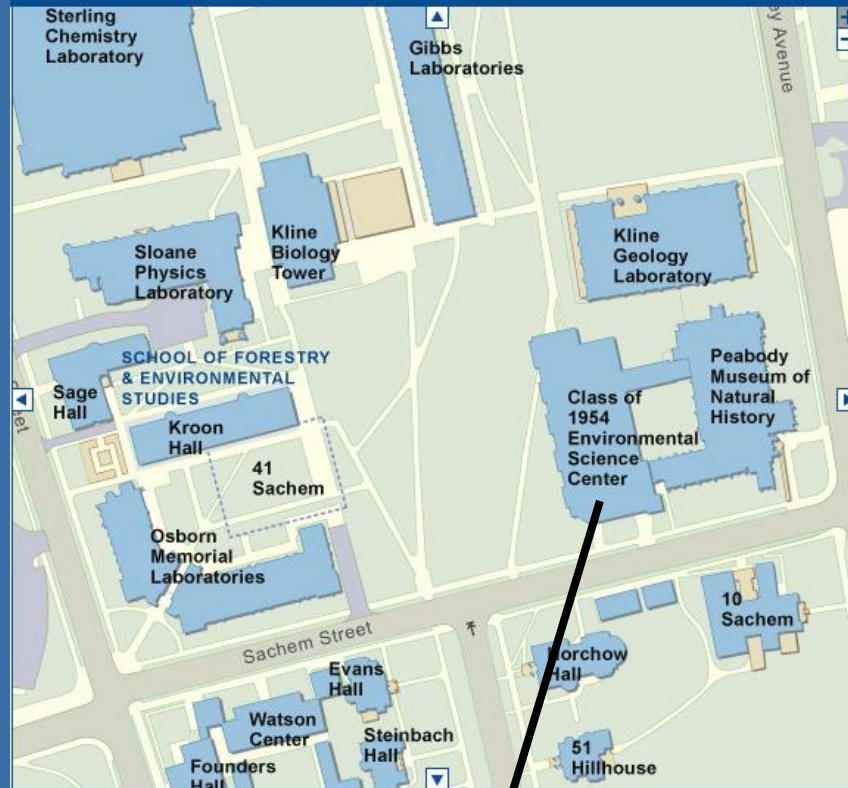


Environmental Science Center (ESC)
2001



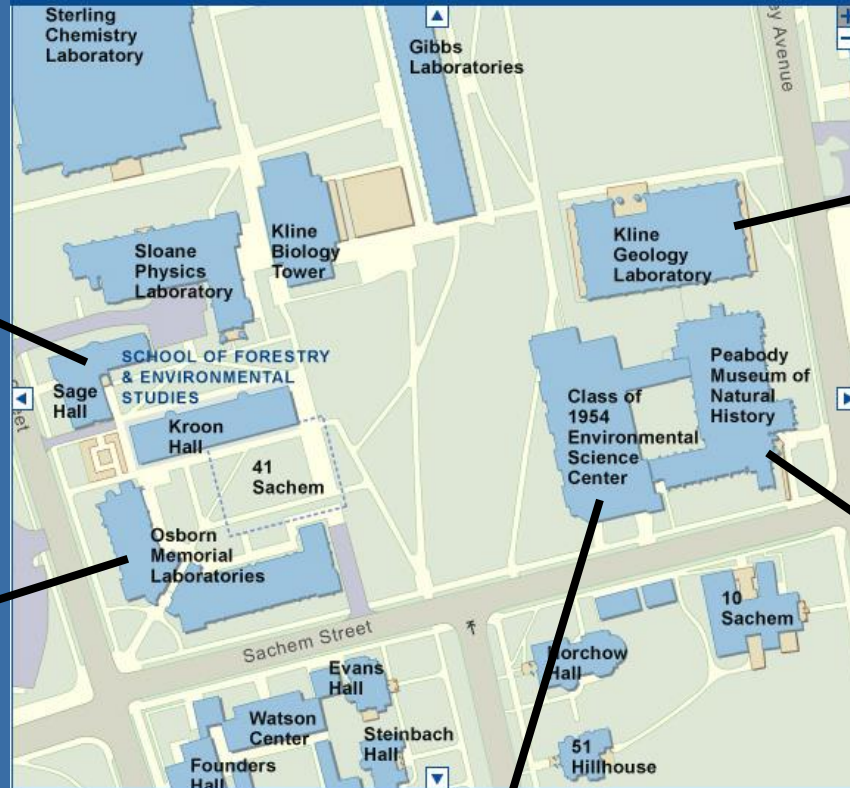
Yale West Campus
2009

Campus map



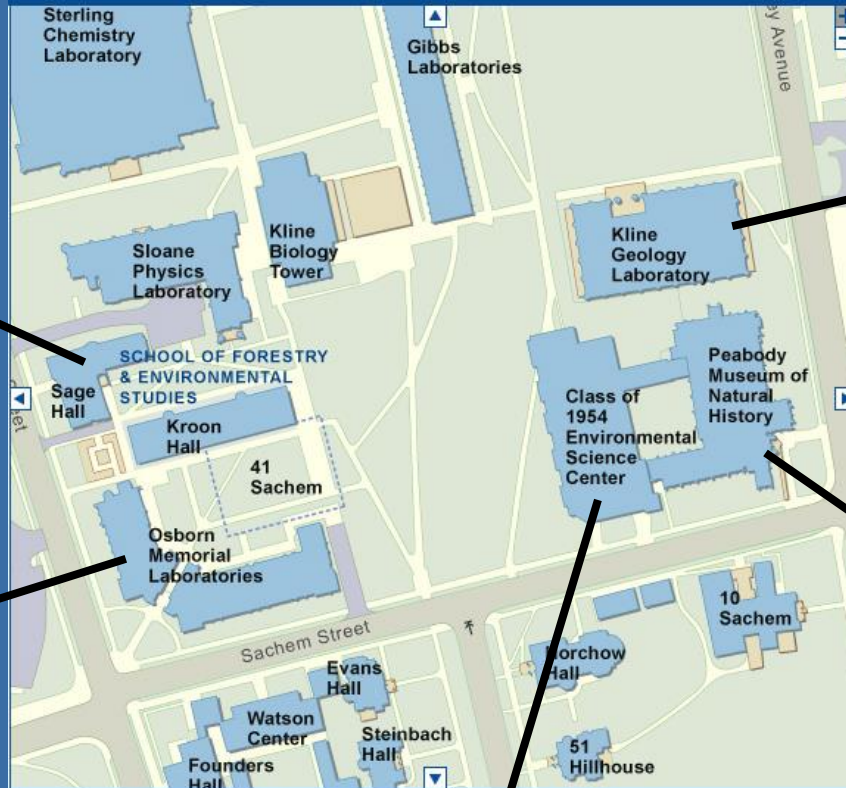
Entomology & the move to ESC

Campus map



Entomology & the move to ESC

Campus map



Over 30% growth in size of Entomology collection toward the end of the Remington era

Entomology & the move to ESC



PHASE 1 MOVE / CONSOLIDATION : 1998-2003

Entomology & the move to ESC



PHASE 1 MOVE / CONSOLIDATION : 1998-2003

Entomology & the move to ESC



PHASE 2 MOVE / CONSOLIDATION: 2005-2008

Entomology & the move to ESC



PHASE 2 MOVE / CONSOLIDATION: 2005-2008

Entomology & the move to ESC

"The "Laying On of Hands"



"The "Laying On of Hands"





1986 - The Cretaceous of Computing



1986 - The Cretaceous of Computing



Peabody Collections

Digital History & Timeline



- 1986 Most Divisions starting to use personal computers



Peabody Collections

Digital History & Timeline



- 1986 Most Divisions starting to use personal computers
- 1989 Computer Committee studies long-term solutions



Peabody Collections

Digital History & Timeline



- 1986 Most Divisions starting to use personal computers
- 1989 Computer Committee studies long-term solutions
- 1991 Systems Office created & staffed
- 1991 Argus collections management initiative starts





Peabody Collections

Digital History & Timeline



- 1986 Most Divisions starting to use personal computers
- 1989 Computer Committee studies long-term solutions
- 1991 Systems Office created & staffed
- 1991 Argus collections management initiative starts
- 1994 Divisions heavily engaged in electronic cataloguing





Peabody Collections

Digital History & Timeline



- 1986 Most Divisions starting to use personal computers
- 1989 Computer Committee studies long-term solutions
- 1991 Systems Office created & staffed
- 1991 Argus collections management initiative starts
- 1994 Divisions heavily engaged in electronic cataloguing
- 1994 Gopher services launched for collections data





Peabody Collections

Digital History & Timeline



- 1986 Most Divisions starting to use personal computers
- 1989 Computer Committee studies long-term solutions
- 1991 Systems Office created & staffed
- 1991 Argus collections management initiative starts
- 1994 Divisions heavily engaged in electronic cataloguing
- 1994 Gopher services launched for collections data
- 1998 Physical move of collections to ESC “begins”





Peabody Collections

Digital History & Timeline



- 1986 Most Divisions starting to use personal computers
- 1989 Computer Committee studies long-term solutions
- 1991 Systems Office created & staffed
- 1991 Argus collections management initiative starts
- 1994 Divisions heavily engaged in electronic cataloguing
- 1994 Gopher services launched for collections data
- 1998 Physical move of collections to ESC “begins”
- 2002 Physical move of collections to ESC “ends”





Peabody Collections

Digital History & Timeline



- 1986 Most Divisions starting to use personal computers
- 1989 Computer Committee studies long-term solutions
- 1991 Systems Office created & staffed
- 1991 Argus collections management initiative starts
- 1994 Divisions heavily engaged in electronic cataloguing
- 1994 Gopher services launched for collections data
- 1998 Physical move of collections to ESC “begins”
- 2002 Physical move of collections to ESC “ends”
- 2003 Digitization Committee searches for Argus successor





Peabody Collections

Digital History & Timeline



- 1986 Most Divisions starting to use personal computers
- 1989 Computer Committee studies long-term solutions
- 1991 Systems Office created & staffed
- 1991 Argus collections management initiative starts
- 1994 Divisions heavily engaged in electronic cataloguing
- 1994 Gopher services launched for collections data
- 1998 Physical move of collections to ESC “begins”
- 2002 Physical move of collections to ESC “ends”
- 2003 Digitization Committee searches for Argus successor
- 2004 KE EMu selected, preparation for new system begins





Peabody Collections

Digital History & Timeline



- 1986 Most Divisions starting to use personal computers
- 1989 Computer Committee studies long-term solutions
- 1991 Systems Office created & staffed
- 1991 Argus collections management initiative starts
- 1994 Divisions heavily engaged in electronic cataloguing
- 1994 Gopher services launched for collections data
- 1998 Physical move of collections to ESC “begins”
- 2002 Physical move of collections to ESC “ends”
- 2003 Digitization Committee searches for Argus successor
- 2004 KE EMu selected, preparation for new system begins
- 2005 Argus data migration and go-live in KE EMu





Peabody Collections

Digital History & Timeline



- 2005 Collections data launched to GBIF, Paleoportal et al.



Peabody Collections

Digital History & Timeline



- 2005 Collections data launched to GBIF, Paleoportal et al.
- 2006 Digital conversion of transaction records accelerates
- 2006 Digital imaging of specimens rapidly accelerates





Peabody Collections

Digital History & Timeline



- 2005 Collections data launched to GBIF, Paleoportal et al.
- 2006 Digital conversion of transaction records accelerates
- 2006 Digital imaging of specimens rapidly accelerates
- 2007 Physical move of collections to West Campus “begins”





Peabody Collections

Digital History & Timeline



- 2005 Collections data launched to GBIF, Paleoportal et al.
- 2006 Digital conversion of transaction records accelerates
- 2006 Digital imaging of specimens rapidly accelerates
- 2007 Physical move of collections to West Campus “begins”
- 2008 Yale Office of Digital Assets & Infrastructure (ODAI)





Peabody Collections

Digital History & Timeline



- 2005 Collections data launched to GBIF, Paleoportal et al.
- 2006 Digital conversion of transaction records accelerates
- 2006 Digital imaging of specimens rapidly accelerates
- 2007 Physical move of collections to West Campus “begins”
- 2008 Yale Office of Digital Assets & Infrastructure (ODAI)
- 2009 Peabody partners w/ODAI & other campus units
- 2009 Physical move of collections to West Campus “ends”



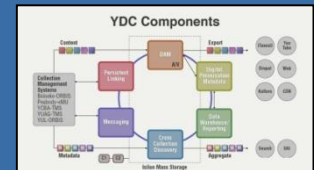


Peabody Collections

Digital History & Timeline



- 2005 Collections data launched to GBIF, Paleoportal et al.
- 2006 Digital conversion of transaction records accelerates
- 2006 Digital imaging of specimens rapidly accelerates
- 2007 Physical move of collections to West Campus “begins”
- 2008 Yale Office of Digital Assets & Infrastructure (ODAI)
- 2009 Peabody partners w/ODAI & other campus units
- 2009 Physical move of collections to West Campus “ends”
- 2010 Yale Digital Asset Management (DAM) system live



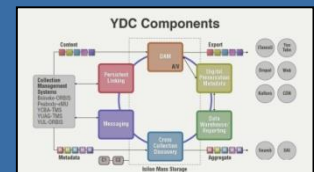


Peabody Collections

Digital History & Timeline



- 2005 Collections data launched to GBIF, Paleoportal et al.
- 2006 Digital conversion of transaction records accelerates
- 2006 Digital imaging of specimens rapidly accelerates
- 2007 Physical move of collections to West Campus “begins”
- 2008 Yale Office of Digital Assets & Infrastructure (ODAI)
- 2009 Peabody partners w/ODAI & other campus units
- 2009 Physical move of collections to West Campus “ends”
- 2010 Yale Digital Asset Management (DAM) system live
- 2011 Yale Cross Collections Discovery (CCD) portal live
- 2011 KE EMu interoperating with Yale DAM & CCD



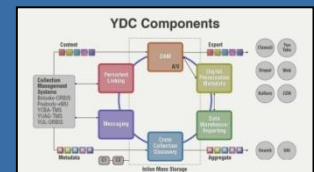


Peabody Collections

Digital History & Timeline



- 2005 Collections data launched to GBIF, Paleoportal et al.
- 2006 Digital conversion of transaction records accelerates
- 2006 Digital imaging of specimens rapidly accelerates
- 2007 Physical move of collections to West Campus “begins”
- 2008 Yale Office of Digital Assets & Infrastructure (ODAI)
- 2009 Peabody partners w/ODAI & other campus units
- 2009 Physical move of collections to West Campus “ends”
- 2010 Yale Digital Asset Management (DAM) system live
- 2011 Yale Cross Collections Discovery (CCD) portal live
- 2011 KE EMu interoperating with Yale DAM & CCD
- 2012 Projects to database & digitize archives commence





Peabody Collections

Current Digital Snapshot

• Anthropology	325,000	Lot
• Botany	400,000	Individual
• Entomology	450,000	Lot / Individual
• Invertebrate Paleontology	350,000	Lot
• Invertebrate Zoology	350,000	Lot
• Mineralogy	35,000	Individual
• Paleobotany	150,000	Individual
• Scientific Instruments	5,000	Individual
• Vertebrate Paleontology	125,000	Individual
• Vertebrate Zoology	185,000	Lot / Individual

14 million specimens yields 2.4 million items to catalog electronically



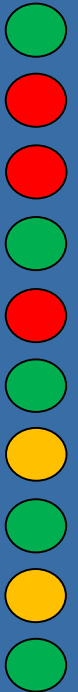
Peabody Collections

Current Digital Snapshot

● > 70%
● > 50%
● < 50%

• Anthropology	325,000
• Botany	400,000
• Entomology	450,000
• Invertebrate Paleontology	350,000
• Invertebrate Zoology	350,000
• Mineralogy	35,000
• Paleobotany	150,000
• Scientific Instruments	5,000
• Vertebrate Paleontology	125,000
• Vertebrate Zoology	185,000

Lot
 Individual
 Lot / Individual
 Lot
 Lot
 Individual
 Individual
 Individual
 Individual
 Lot / Individual



Items with an electronic record available (25 years' effort): ~55 %



Peabody Collections

Current Digital Snapshot

● > 70%
● > 50%
● < 50%

- Anthropology
- Botany
- Entomology
- Invertebrate Paleontology
- Invertebrate Zoology
- Mineralogy
- Paleobotany
- Scientific Instruments
- Vertebrate Paleontology
- Vertebrate Zoology

230,000 digital assets

mostly JPG & TIF, scattering of other mime types

not
 Individual
 not / Individual
 not
 not
 Individual
 Individual
 Individual
 Individual
 not / Individual

●
●
●
●
●
●
●
●
●
●

Items with an electronic record available (25 years' effort): ~55 %



“On The Ground, In-The-Trenches” View





“On The Ground, In-The-Trenches” View



2007


What to do first?



KE EMu (YPMNH) - Catalog (1) - Display

File Edit Select View Tools Tabs Multimedia Window Help

ENT.415196: *Junonia coenia*: Florida. Monroe County. Big Pine Key. Coll: Rutkowski, F. E. 22 May 1966.



Cataloging

Catalog No.: ENT.415196 Accession: 1 YPM.10844: Rutkov... Department: Entomology
 Site: ENT.03704: Florida. Monr... Collection: *
 Reassess? Yes No Location: Lot Count: 1 LotMod:

Copied Data

Taxon: 1 *Junonia coenia*
 Det. By: * Det. Date: *
 Collector: 1 Rutkowski, F. E. Coll. Date: 1 22 May 1966

Descriptive

Other Numbers

Type	Value	Storage	Authority	Date	Remarks
*					

Preparation Details

Preparation Type	Count	Storage	Prepared By	Date	Remarks
*					

Catalog (Ant) Catalog (Bot) Catalog (Ent) Catalog (HSI) Catalog (IP) Catalog (IZ) Catalog (Min) Catalog (MNH) Catalog (NH) Catalog (YPMNH)

Display Object 4 of 80, 1 selected emu 20103



Catalog (1) - Display

File Edit Select View Tools Tabs Multimedia Window Help

ENT.415196: *Junonia coenia*: Florida. Monroe County. Big Pine Key. Coll: Rutkowski, F. E. 22 May 1966.

Specimens

Cataloging
Catalog No.: ENT.415196
Accession: 1 YPM.10844: Rutkov...
Site: ENT.03704: Florida, Monr...
Department: Entomology
Collection: *
Reassess? Yes No
Location: Lot: 1 LotMod: *

Copied Data
Taxon: 1 *Junonia coenia*
Det. By: * Det. Date: *
Collector: 1 Rutkowski, F. E. Coll. Date: 1 22 May 1966

Type	Value	Storage	Authority	Date	Remarks
------	-------	---------	-----------	------	---------

Preparation Details
Preparation Type Count Storage Prepared By Date Remarks

Display Object 4 of 80, 1 selected emu 20103

Accession Lots (1) - Display

File Edit Select View Tools Tabs Multimedia Window Help

YPM.10844: Rutkowski, F. E. [Mar 1983-Apr 1988] Large collection of Lepidoptera and fine cabinetry, donated ov 13094

Accession
Accon. Number: YPM.10844 Department: Yale Peabody Museum
Accon. Method: rcv'd via donation Lot Details: 1 Receiving Department 9479
Date Received (Earliest): Mar 1983 Entomology
Date Received (Latest): 1 Apr 1988
Retrospective? Yes No Reassess? Yes No Total: 9479
Description: Large collection of Lepidoptera and fine cabinetry, donated over the period March 1983 (n=8241), March 1984 (n=17), April 1988 (n=221) ["Presented by / Frank Edwin Rutkowski / March 1983"]

Source/Vendor	Role	Address	Note
1 Rutkowski, F. E.	Donor		

Accession Lot Details Accession Finance T8 1
Display Lot 1 of 1 emu 20103

Accessions

Collection Events / Sites (1) - Display

File Edit Select View Tools Tabs Multimedia Window Help

ENT.03704: Florida. Monroe County. Big Pine Key. 104399

Site Number: ENT.03704 Department: Entomology Reassess?

Site Details
Continent: North America
Country: USA
State/Prov.: Florida
County/Dist.: Monroe County
City/Town:
Nearest Place:
Precise Locality: Big Pine Key
Context: *

Accession
Biogeography: Region:
Oceanic: Ocean:
Sea/Gulf:
Bay/Sound:
Riverine: Drainage:

Site Collecting Associations Sitrals
Display Record 1 of 1 emu 20103

Localities

Parties (1) - Display

File Edit Select View Tools Tabs Multimedia Window Help

Rutkowski, F. E.

Party Details
Party Type: Person
Person Details
Title: Mr.
First: Frank
Middle: Edwin
Last: Rutkowski
Suffix:
Other Names: 1 ter
Gender:
Department: 1 Entomology
Language: Primary:
Dialect:
Derived Names
Automatic: Yes No
Salutation: Frank
Full: Frank Edwin Rutkowski [Mr.]
Brief: F. E. Rutkowski
Cited: Rutkowski, Frank E.
Taxonomic: Rutkowski (F. E.)

People/Organizations

Display Party 1 of 1 emu 20103

Taxonomy (1) - Display

File Edit Select View Tools Tabs Tree Multimedia Window Help

Junonia coenia 123911

Classification
Parent: *Junonia*
Family & No.: Nymphalidae
Genus & No.: *Junonia*
Subgenus:
Species: *coenia*
Subspecies:
Other: [Other Rank] [Other Value]

Controls
Applicable Code: ICZN Rank: Species
Department: Entomology
Hybrid & Parentage
Hybrid? No Rank:
Sex: unknown Parent:
Cultivar Name
Cultivar? No Name:

Scientific Name
Automatic? Yes Name: *Junonia coenia*
Currently Acco
Currently Acco

Classification Taxon 1 of 1 emu 20103

Taxonomic Names



Catalog (1) - Display

File Edit Select View Tools Tabs Multimedia Window Help

ENT.415196: *Junonia coenia*: Florida. Monroe County. Big Pine Key. Coll: Rutkowski, F. E. 22 May 1966.

Specimens

Cataloging
Catalog No.: ENT.415196
Accession: 1 YPM.10844: Rutkov...
Site: ENT.03704: Florida, Monr...
Department: Entomology
Collection: *
Reassess? Yes No
Location: Lot: 1 LotMod: *

Copied Data
Taxon: 1 *Junonia coenia*
Det. By: * Det. Date: *
Collector: 1 Rutkowski, F. E. Coll. Date: 1 22 May 1966

Type	Value	Storage	Authority	Date	Remarks
------	-------	---------	-----------	------	---------

Preparation Details
Preparation Type Count Storage Prepared By Date Remarks

Display | Object 4 of 80, 1 selected emu 20103

Accession Lots (1) - Display

File Edit Select View Tools Tabs Multimedia Window Help

YPM.10844: Rutkowski, F. E. [Mar 1983-Apr 1988] Large collection of Lepidoptera and fine cabinetry, donated ov 13094

Accession
Accn. Number: YPM.10844 Department: Yale Peabody Museum
Accn. Method: rcvd via donation Lot Details: Receiving Department Quantity
Date Received (Earliest): Mar 1983 1 Entomology 9479
Date Received (Latest): 1 Apr 1988
Retrospective? Yes No Reassess? Yes No Total: 9479
Description: Large collection of Lepidoptera and fine cabinetry, donated over the period March 1983 (n=8241), March 1984 (n=17), April 1988 (n=221) [Presented by / Frank Edwin Rutkowski / March 1983]

Source/Vendor	Role	Address	Note
1 Rutkowski, F. E.	Donor		

Accession Lot Details Accession Finance T8 |< |> | emu 20103

Accessions

Collection Events / Sites (1) - Display

File Edit Select View Tools Tabs Multimedia Window Help

ENT.03704: Florida. Monroe County. Big Pine Key. 104399

Site Number: ENT.03704 Department: Entomology Reassess?

Site Details
Continent: North America
Country: USA
State/Prov.: Florida
County/Dist.: Monroe County
City/Town:
Nearest Place:
Precise Locality: Big Pine Key

Accession
Biogeography: Region:
Oceanic: Ocean:
Sea/Gulf: Bay/Sound:
Riverine: Drainage:

Context: *

Site Collecting Associations Sitrals |< |> | emu 20103

Localities

Parties (1) - Display

File Edit Select View Tools Tabs Multimedia Window Help

Rutkowski, F. E.

Party Details
Party Type: Person
Person Details
Title: Mr.
First: Frank
Middle: Edwin
Last: Rutkowski
Suffix:
Other Names: 1 ter
Gender: *

Department: 1 Entomology
Language: Primary:
Dialect:
Derived Names
Automatic: Yes No
Salutation: Frank
Full: Frank Edwin Rutkowski [Mr.]
Brief: F. E. Rutkowski
Cited: Rutkowski, Frank E.
Taxonomic: Rutkowski (F. E.)

People/Organizations

Display | Party 1 of 1 emu 20103

Taxonomy (1) - Display

File Edit Select View Tools Tree Multimedia Window Help

Junonia coenia 123911

Classification
Parent: *Junonia*
Family & No.: Nymphalidae
Genus & No.: *Junonia*
Species: *coenia*
Subspecies:
Other: [Other Rank] [Other Value]

Controls
Applicable Code: ICZN Rank: Species
Department: Entomology
Hybrid & Parentage
Hybrid? No Rank:
Sex: unknown Parent:
Cultivar Name
Cultivar? No Name:

Scientific Name
Automatic? Yes Name: *Junonia coenia*
Currently Acco
Currently Acco

Classification Taxon 1 of 1 emu 20103

Taxonomic Names



Catalog (1) - Display

ENT.415196: *Junonia coenia*: Florida, Monroe County, Big Pine Key. Coll: Rutkowski, F. E. 22 May 1966.

Specimens

Entomology

Reassess? Yes No

Copied Data

Taxon: 1 *Junonia coenia*

Det. By: *

Collector: 1 Rutkowski, F. E.

Preparation Details

Preparation Type: C

Display | Object 4 of 80 | Selected | emu | 20103



Accession Lots (1) - Display

YPM.10844: Rutkowski, F. E. [Mar 1983-Apr 1988] Large collection of Lepidoptera and fine cabinetry, donated over the period March 1983 (n=241), March 1984 (n=17), April 1988 (n=221) [Presented by / Frank Edwin Rutkowski / March 1983]

Accession

Accn. Number: YPM.10844 Department: Yale Peabody Museum

Accn. Method: rcv'd via donation Lot Details: Receiving Department Quantity

1	Entomology	9479
---	------------	------

Date Received (Earliest): Mar 1983

Date Received (Latest): 1 Apr 1988

Reassess? Yes No Reassess? Yes No Total: 9479

Description: Large collection of Lepidoptera and fine cabinetry, donated over the period March 1983 (n=241), March 1984 (n=17), April 1988 (n=221) [Presented by / Frank Edwin Rutkowski / March 1983]

Party Details

Source/Vendor	Role	Address	Note
1	Rutkowski, F. E.	Donor	

Accession Lot Details Accession Finance

Display | Lot 1 of 1 | emu | 20103

Accessions

Collection Events / Sites (1) - Display

ENT.03704: Florida, Monroe County, Big Pine Key.

Site Number: ENT.03704 Department: Entomology Reassess?

Site Details

Continent: North America

Country: USA

State/Prov.: Florida

County/Dist.: Monroe County

City/Town:

Nearest Place: Big Pine Key

Precise Locality:

Context: *

Accession

Biogeography

Region:

Oceanic

Ocean:

Sea/Gulf:

Bay/Sound:

Riverine

Drainage:

Collecting

Display | Record 1 of 1 | emu | 20103

Localities

Parties (1) - Display

Rutkowski, F. E.

Party Details

Party Type: Person

Person Details

Title: Mr.

First: Frank

Middle: Edwin

Last: Rutkowski

Suffix:

Other Names: 1 ter

Gender:

Department: 1 Entomology

Language

Primary:

Dialect:

Derived Names

Automatic: Yes No

Salutation: Frank

Full: Frank Edwin Rutkowski [Mr.]

Brief: F. E. Rutkowski

Cited: Rutkowski, Frank E.

Taxonomic: Rutkowski (F. E.)

People/Organizations

Display | Party 1 of 1 | emu | 20103

Taxonomy (1) - Display

Junonia coenia 123911

Classification

Parent: *Junonia*

Family & No.: Nymphalidae

Genus & No.: *Junonia*

Species: *coenia*

Subspecies:

Other: [Other Rank] [Other Value]

Seq. Num.: *

Scientific Name

Automatic? Yes Name: *Junonia coenia*

Currently Acco

Currently Acco

Classification

Display | Taxon 1 of 1 | emu | 20103

Taxonomic Names

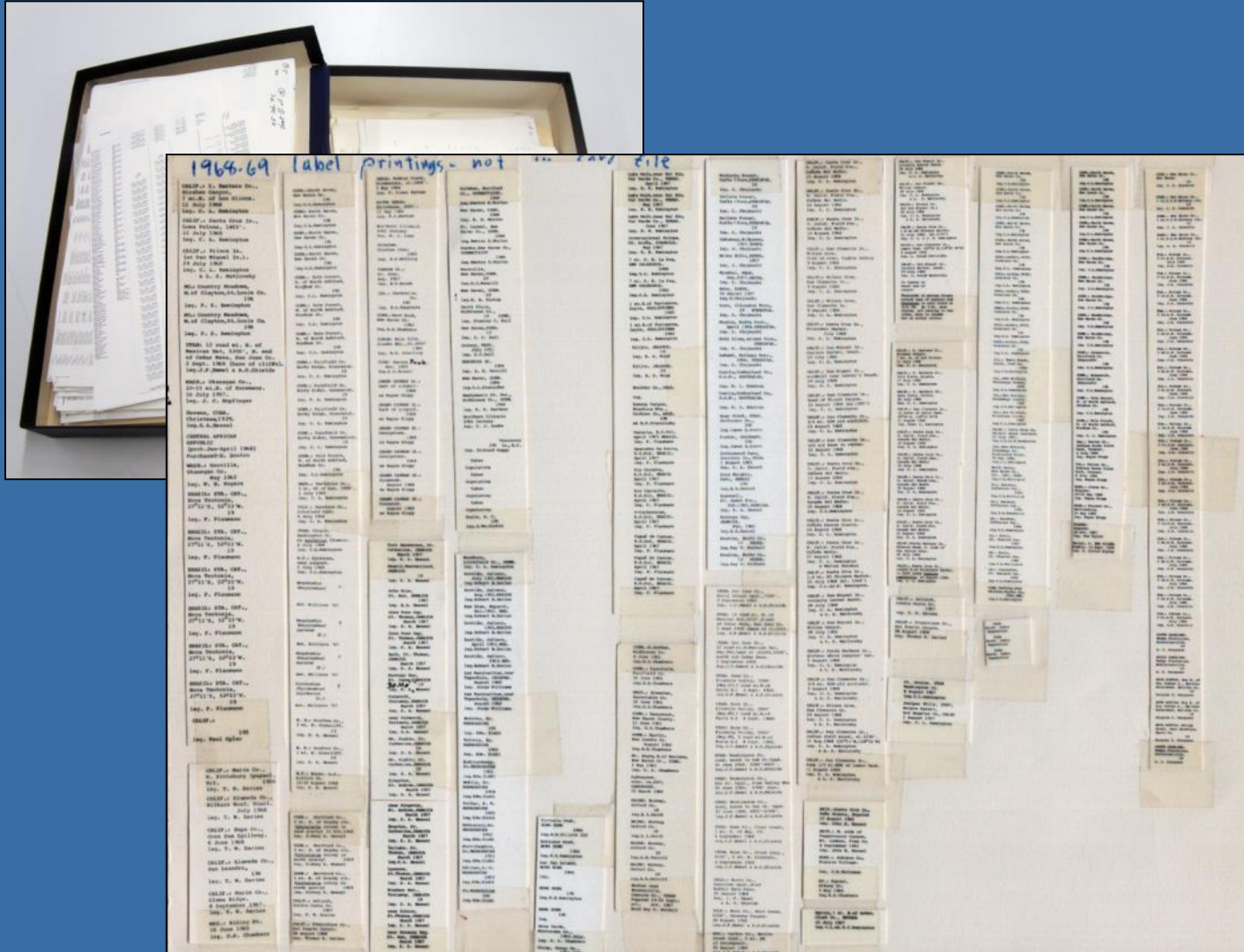
2007-2008

Prelude to Databasing Specimens



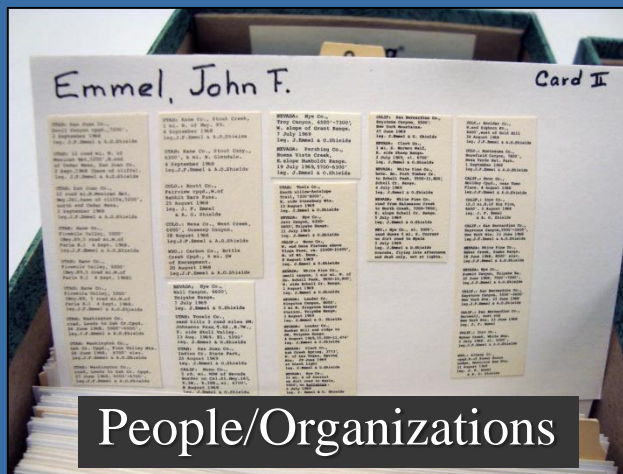
Old printed label “master sheets”





Old printed label “master sheets”

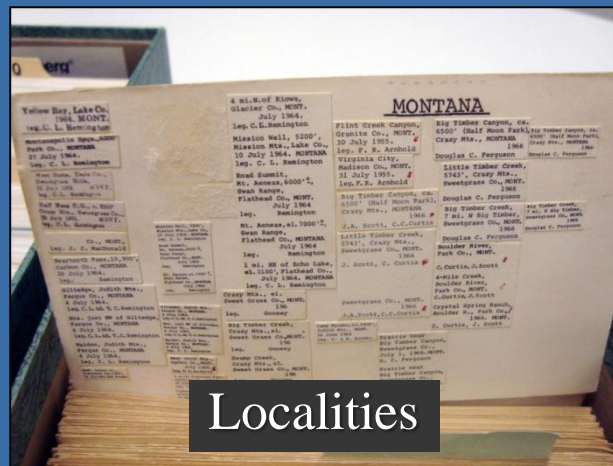




People/Organizations



Accessions

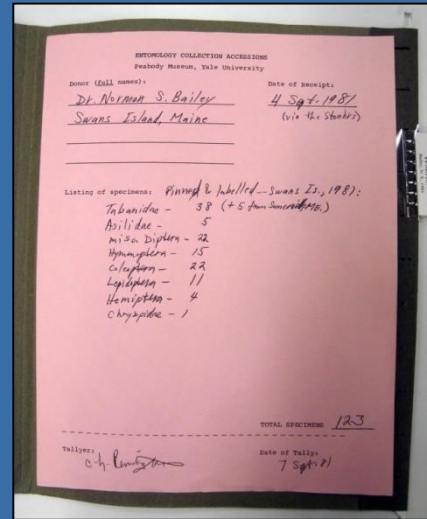
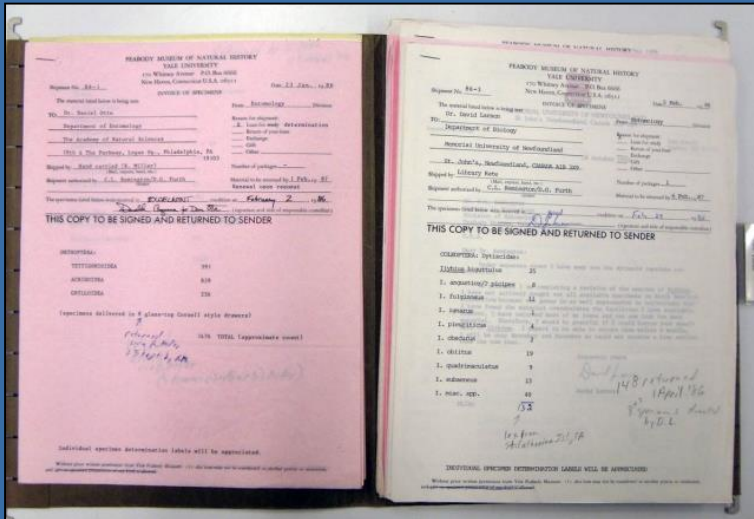


Localities





Rosa Li

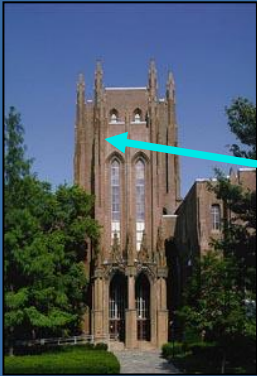


Derek Zhao

Populate EMu authority files/tables from cards, sheets, loans







2007-2008

Prelude to Databasing Specimens



Barbara Beitch



Veronica Wallace

Remington Personal Archives

Colorado
1955
Western Trip - 1953

Dear Mr. Hesse,

Mr. Hesse, I have just received your letter of about January 15th, and am pleased to hear that you are planning to return to the area for our field trips.

During the trip, we planned to make a major stop at Durango. It is a very dry region all the year round with only a short rain season about that time. Last year, the people who work there thought we had a beautiful collection of plants and animals that they were sure of. I am sure that if you had been there you would have been able to collect some very interesting specimens. I would propose that we do this trip in all right. If you have nothing better to suggest, I will be glad to do it. I would propose that we do this trip in all right. If you have nothing better to suggest, I will be glad to do it.

I would propose that you arrive about April 15th and that you try to stay about four or five days - that being the date of the trip. I would propose that you arrive about April 15th and that you try to stay about four or five days - that being the date of the trip.

I am glad to hear that you are planning to return to the area for our field trips. I would propose that you arrive about April 15th and that you try to stay about four or five days - that being the date of the trip.

Very sincerely,
C. S. Townsend

Comb. Pars. 25 July 55
O. edwardsii - 5
O. lucilla - 2
E. cuticularis - 18
Romichnus - 8 (1 sp. 12)
L. saevi - 1
P. castrosi - num.
P. browni - 1

Colorado 1954
 30 July '54 - Sci. Lodge
 Col. scudderii ♀ on pine
 Curvica larva on Aspen

1 July '54 - Eldora area
 Lim. wiedenmayeri - 1 ♀
 sp. hesperia - 1 ♀
 sp. eurypoda - 1 ♀
 1 July '54 - Sci. Lodge

Pieris napi - num. fresh (10/10/54)
Celaia alexandra - num. fresh (10/10/54)
 (8 ♀♀ on mountain) (10/10/54)
 Warrier's group
C. haddocki to *pubescens* - very good
Minia setiva - num. fresh (10/10/54)
 many feeding on purple *Erythronium*
Lim. wiedenmayeri - fresh (10/10/54)
Speyeria hesperia - fresh (10/10/54)
 "altiva" - fresh
 "eurypoda" - fresh

SIRCAR DASI UNIVERSITY COLLEGE
OF SCIENCE, BANGALORE

23rd January 1960.

Dear Mr. Hesse,

I am writing back from Washington, I have just received your letter of about January 15th, and am pleased to hear that you are planning to return to the area for our field trips.

During the trip, we planned to make a major stop at Durango. It is a very dry region all the year round with only a short rain season about that time. Last year, the people who work there thought we had a beautiful collection of plants and animals that they were sure of. I am sure that if you had been there you would have been able to collect some very interesting specimens. I would propose that we do this trip in all right. If you have nothing better to suggest, I will be glad to do it.

I would propose that you arrive about April 15th and that you try to stay about four or five days - that being the date of the trip. I would propose that you arrive about April 15th and that you try to stay about four or five days - that being the date of the trip.

I am glad to hear that you are planning to return to the area for our field trips. I would propose that you arrive about April 15th and that you try to stay about four or five days - that being the date of the trip.

Very sincerely,
C. S. Townsend

Biological Notes - C.S.T.
 1. *Elletia* & *Pieris napi* very common (as expected)
 One *Elletia* with translucent eggs side by side on 1 leaf - always underside, but white.

2. *Microgaster* seen on a fern (C. hillii) in area. *Microgaster* (both) on side of *Escallonia* (10/10/54) - always right.

3. *Elletia* on large same yellow pine.

4. *Elletia* on large same yellow pine.

5. *Elletia* on large same yellow pine.

6. *Elletia* on large same yellow pine.

7. *Elletia* on large same yellow pine.

8. *Elletia* on large same yellow pine.

9. *Elletia* on large same yellow pine.

10. *Elletia* on large same yellow pine.

Dear Mr. Hesse,

I am writing back from Washington, I have just received your letter of about January 15th, and am pleased to hear that you are planning to return to the area for our field trips.

During the trip, we planned to make a major stop at Durango. It is a very dry region all the year round with only a short rain season about that time. Last year, the people who work there thought we had a beautiful collection of plants and animals that they were sure of. I am sure that if you had been there you would have been able to collect some very interesting specimens. I would propose that we do this trip in all right. If you have nothing better to suggest, I will be glad to do it.

I would propose that you arrive about April 15th and that you try to stay about four or five days - that being the date of the trip. I would propose that you arrive about April 15th and that you try to stay about four or five days - that being the date of the trip.

I am glad to hear that you are planning to return to the area for our field trips. I would propose that you arrive about April 15th and that you try to stay about four or five days - that being the date of the trip.

Very sincerely,
C. S. Townsend

Dear Mr. Hesse,

I am writing back from Washington, I have just received your letter of about January 15th, and am pleased to hear that you are planning to return to the area for our field trips.

During the trip, we planned to make a major stop at Durango. It is a very dry region all the year round with only a short rain season about that time. Last year, the people who work there thought we had a beautiful collection of plants and animals that they were sure of. I am sure that if you had been there you would have been able to collect some very interesting specimens. I would propose that we do this trip in all right. If you have nothing better to suggest, I will be glad to do it.

I would propose that you arrive about April 15th and that you try to stay about four or five days - that being the date of the trip. I would propose that you arrive about April 15th and that you try to stay about four or five days - that being the date of the trip.

I am glad to hear that you are planning to return to the area for our field trips. I would propose that you arrive about April 15th and that you try to stay about four or five days - that being the date of the trip.

Very sincerely,
C. S. Townsend

1960

Lake Awasa, Arusi Prov, ETHIOPIA
 leg. S. Chijacki

Fagena For, 700-1000, nr. Asmara, ERITREA
 leg. S. Chijacki

Dagumaye, Tare Prov, ETHIOPIA
 leg. S. Chijacki

Awash River, Sheb Prov, ETHIOPIA
 leg. S. Chijacki

Seyama Forest, nr. Shashanna, Arusi Prov, ETHIOPIA
 leg. S. Chijacki

Kasindi, Kivu Nord, BELGIAN CONGO
 1960
 leg. S. A. Hesse

Near Irumu, Kibali, Ituri Prov, BELGIAN CONGO
 1960
 leg. S. A. Hesse

Marangu, Taita Prov, TANZANIA
 1960
 leg. S. A. Hesse

Near Kasindi, ~~Ituri~~ Prov, UGANDA
 (ca. equator)
 1960
 leg. S. A. Hesse





Catalog (1) - Display

File Edit Select View Tools Tabs Multimedia Window Help

ENT.415196: *Junonia coenia*: Florida. Monroe County. Big Pine Key. Coll: Rutkowski, F. E. 22 May 1966.

Specimens

Cataloging

Catalog No.: [ENT.415196] Accession: [1 YPM.10844: Rutkov...] Department: [Entomology]

Site: [ENT.03704: Florida, Monr...] Collection: [*] Reassess? [Yes] [No]

Location: [] Lot: [1] LotMod: []

Copied Data

Taxon: [1 Junonia coenia] Det. By: [*] Det. Date: [*]

Collector: [1 Rutkowski, F. E.] Coll. Date: [1 22 May 1966]

Other Numbers

Type	Value	Storage	Authority	Date	Remarks

Preparation Details

Preparation Type	Count	Storage	Prepared By	Date	Remarks

Display | Object 4 of 80, 1 selected

Accession Lots (1) - Display

File Edit Select View Tools Tabs Multimedia Window Help

YPM.10844: Rutkowski, F. E. [Mar 1983-Apr 1988] Large collection of Lepidoptera and fine cabinetry, donated ov 13094

Accession

Accn. Number: [YPM.10844] Department: [Yale Peabody Museum]

Accn. Method: [rcvd via donation] Lot Details: [Receiving Department] [Quantity]

Date Received (Earliest): [Mar 1983] [Entomology] 9479

Date Received (Latest): [1 Apr 1988]

Retrospective? [Yes] [No] Reassess? [Yes] [No] Total: 9479

Description: [Large collection of Lepidoptera and fine cabinetry, donated over the period March 1983 (n=241), March 1984 (n=17), April 1988 (n=221)] [Presented by / Frank Edwin Rutkowski / March 1983']

Party Details

Source/Vendor	Role	Address	Note
1 Rutkowski, F. E.	Donor		

Accession Lot Details Accession Finance

Display | Lot 1 of 1

Accessions

Collection Events / Sites (1) - Display

File Edit Select View Tools Tabs Multimedia Window Help

ENT.03704: Florida. Monroe County. Big Pine Key. 104399

Site

Site Number: [ENT.03704] Department: [Entomology] Reassess? []

Site Details

Continent: [North America] Accession: []

Country: [USA] Biogeography: []

State/Prov.: [Florida] Region: []

County/Dist.: [Monroe County] Oceanic: []

City/Town: [] Ocean: []

Nearest Place: [] Sea/Gulf: []

Precise Locality: [Big Pine Key] Bay/Sound: []

Riverine Drainage: []

Context: [*]

Site Collecting Associations Sitrals

Display | Record 1 of 1

Localities

Parties (1) - Display

File Edit Select View Tools Tabs Multimedia Window Help

Rutkowski, F. E.

Party Details

Party Type: [Person] Department: [1 Entomology]

Person Details

Title: [Mr.] Language: []

First: [Frank] Surname: []

Middle: [Edwin] Suffix: []

Last: [Rutkowski] Other Names: []

Gender: []

Derived Names

Automatic: [Yes] [No] Salutation: [Mr.]

Full: [Frank Edwin Rutkowski (Mr.)]

Brief: [F. E. Rutkowski]

Cited: [Rutkowski, Frank E.]

Taxonomic: [Rutkowski (F. E.)]

People/Organizations

Display | Party 1 of 1

Taxonomy (1) - Display

File Edit Select View Tools Tree Multimedia Window Help

Junonia coenia 123911

Classification

Family & No.: [Nymphalidae]

Genus & No.: [Junonia]

Species: [coenia]

Subspecies: []

Other: [Other Rank] [Other Value]

Seq. Num.: []

Scientific Name

Automatic? [Yes] Name: [Junonia coenia]

Currently Acco

Currently Acco

Classification

Taxonomic Names

Display | Taxon 1 of 1





Catalog (1) - Display

ENT.415196: *Junonia coenia*: Florida. Monroe County. Big Pine Key. Coll: Rutkowski, F. E. 22 May 1966.

Specimens

Cataloging
Catalog No.: ENT.415196
Accession: 1 YPM.10844: Rutkov...
Site: ENT.03704: Florida, Monr...
Department: Entomology
Collection: *
Reassess? Yes No
Location: Lot: 1 LotMod: *

Copied Data
Taxon: 1 *Junonia coenia*
Det. By: * Det. Date: *
Collector: 1 Rutkowski, F. E. Coll. Date: 1 22 May 1966

Type	Value	Storage	Authority	Date	Remarks
------	-------	---------	-----------	------	---------

Preparation Type	Count	Storage	Prepared By	Date	Remarks
------------------	-------	---------	-------------	------	---------

Display | Object 4 of 80, 1 selected

Accession Lots (1) - Display

YPM.10844: Rutkowski, F. E. [Mar 1983-Apr 1988] Large collection of Lepidoptera and fine cabinetry, donated ov 13094

Accession
Accon. Number: YPM.10844
Department: Yale Peabody Museum
Accon. Method: rcvd via donation
Lot Details: Receiving Department: Entomology Quantity: 9479
Date Received (Earliest): Mar 1983
Date Received (Latest): 1 Apr 1988
Reassess? Yes No
Description: Large collection of Lepidoptera and fine cabinetry, donated over the period March 1983 (n=8241), March 1984 (n=17), April 1988 (n=221) ["Presented by / Frank Edwin Rutkowski / March 1983"]

Source/Vendor	Role	Address	Note
1 Rutkowski, F. E.	Donor		

Display | Lot 1 of 1

Accessions

Collection Events / Sites (1) - Display

ENT.03704: Florida. Monroe County. Big Pine Key. 104399

Site Number: ENT.03704
Department: Entomology
Reassess?

Site Details
Continent: North America
Country: USA
State/Prov.: Florida
County/Dist.: Monroe County
City/Town:
Nearest Place:
Precise Locality: Big Pine Key

Context: *

Display | Record 1 of 1

Localities

Parties (1) - Display

Rutkowski, F. E.

Party Details
Party Type: Person
Person Details
Title: Mr.
First: Frank
Middle: Edwin
Last: Rutkowski
Suffix:
Other Names: 1 ter
Gender:
Department: 1 Entomology
Language:
Dialect:
Derived Names
Automatic: Yes No
Salutation: Frank
Full: Frank Edwin Rutkowski [Mr.]
Brief: F. E. Rutkowski
Cited: Rutkowski, Frank E.
Taxonomic: Rutkowski (F. E.)

Display | Party 1 of 1

People/Organizations

Taxonomy (1) - Display

Junonia coenia 123911

Classification
Parent: *Junonia*
Family & No.: Nymphalidae
Genus & No.: *Junonia*
Subgenus:
Species: *coenia*
Subspecies:
Other: [Other Rank] [Other Value]

Controls
Applicable Code: ICZN Rank: Species
Department: Entomology
Hybrid & Parentage
Hybrid? No Rank:
Sex: unknown Parent:
Cultivar Name
Cultivar? No Name:
Scientific Name
Automatic? Yes Name: *Junonia coenia*

Display | Taxon 1 of 1

Taxonomic Names

KE EMu (YPMNH)

- Catalog
- Taxonomy
- Sites
- Accession Lots
- Events
- Loans
- Locations
- Conservation
- Insurance
- Bibliography
- Rights
- Parties
- Multimedia
- Condition Checks
- Internal Movements
- Valuations
- Lookup Lists
- Registry
- Admin
- Exit
- Help

Catalog (1) - Display

File Edit Select View Tools Tabs Multimedia Window Help

ENT.415196: *Junonia coenia*: Florida. Monroe County. Big Pine Key. Coll: Rutkowski, F. E. 22 May 1966.

Specimens

Cataloging
 Catalog No.: ENT.415196
 Reassess? Yes No
 Copied Data
 Taxon: 1 Junonia
 Det. By: *
 Collector: 1 Rutkowski
 Other Numbers
 Type
 Preparation Detail
 Preparation Ty
 Catalog (Ant) G
 Display Object 4



Accession Lots (1) - Display

File Edit Select View Tools Tabs Multimedia Window Help

YPM.10844: Rutkowski, F. E. [Mar 1983-Apr 1988] Large collection of Lepidoptera and fine cabinetry, donated ov 13094

Accession
 Accn. Number: YPM.10844 Department: Yale Peabody Museum
 Accn. Method: rcvd via donation Lot Details: Receiving Department Quantity
 1 Entomology 9479
 Date Received (Earliest): Mar 1983
 Date Received (Latest): 1 Apr 1988
 Retroactive? Yes No Reassess? Yes No Total: 9479
 Description: Large collection of Lepidoptera and fine cabinetry, donated over the period March 1983 (n=8241), March 1984 (n=17), April 1988 (n=221) [Presented by / Frank Edwin Rutkowski / March 1983]

Party Details
 Source/Vendor Role Address Note
 1 Rutkowski, F. E. Deser

Finance T 4
 emu 20103

ions

Help
 104399

Department: Entomology Reassess?

Accession

Biogeography
 Region:
 Oceanic
 Ocean:
 Sea/Gulf:
 Bay/Sound:
 Riverine
 Dispersal:

ilities

Associations Strati
 emu 20103

Parties

File Edit

Rutkowski

Party Details
 Party Type:
 Person Details
 Title: Mr.
 First: Frank
 Middle: Edwin
 Last: Rutkowski
 Suffix:
 Other Names: 1 ter
 Gender:
 Language
 Primary:
 Dialect:
 Derived Names
 Automatic: Yes No
 Salutation: Frank
 Full: Frank Edwin Rutkowski (Mr.)
 Brief: F. E. Rutkowski
 Cited: Rutkowski, Frank E.
 Taxonomic: Rutkowski (F. E.)

Display | Party 1 of 1 emu 20103

People/Organizations

Taxonomic Names

Classification
 Parent: Junonia
 Family & No.: Nymphalidae
 Genus & No.: Junonia
 Subgenus:
 Species: coenia
 Subspecies:
 Other: Other Rank Other Value
 Seq. Num.:
 Scientific Name
 Automatic? Yes Name: Junonia coenia
 Currently Acco
 Currently Acco

Controls
 Applicable Code: ICZN Rank: Species
 Department: Entomology
 Hybrid & Parentage
 Hybrid? No Rank:
 Sex: unknown Parent:
 unknown Rank:
 unknown Rank:
 Cultivar Name
 Cultivar? No Name:

Display Taxon 1 of 1 emu 20103



Catalog (1) - Display

File Edit Select View Tools Tabs Multimedia Window Help

ENT.415196: *Junonia coenia*: Florida. Monroe County. Big Pine Key. Coll: Rutkowski, F. E. 22 May 1966.

Specimens

Cataloging
 Catalog No.: ENT.415196
 Reassess? Yes No
 Copied Data
 Taxon: 1 Junonia
 Det. By: *
 Collector: 1 Rutkowski, F. E.
 Other Numbers
 Type
 Preparation Details
 Preparation Type
 Catalog (Ant) CA
 Display Object 4



Accession Lots (1) - Display

File Edit Select View Tools Tabs Multimedia Window Help

YPM.10844: Rutkowski, F. E. [Mar 1983-Apr 1988] Large collection of Lepidoptera and fine cabinetry, donated over the period March 1983 (n=9241), March 1984 (n=17), April 1988 (n=221) [Presented by / Frank Edwin Rutkowski / March 1983]

Accession
 Accon. Number: YPM.10844 Department: Yale Peabody Museum
 Accon. Method: rcvd via donation Lot Details: Receiving Department Quantity
 1 Entomology 9479
 Date Received (Earliest): Mar 1983
 Date Received (Latest): 1 Apr 1988
 Retroactive? Yes No Reassess? Yes No Total: 9479
 Description: Large collection of Lepidoptera and fine cabinetry, donated over the period March 1983 (n=9241), March 1984 (n=17), April 1988 (n=221) [Presented by / Frank Edwin Rutkowski / March 1983]

Party Details
 Source/Vendor Role Address Note
 1 Rutkowski, F. E. Donor

Finance T8
 emu 20103

ions

Help
 104399

Department: Entomology Reassess?

Accession

Biogeography
 Region:
 Oceanic
 Ocean:
 Sea/Gulf:
 Bay/Sound:
 Riverine
 Drainage:

lities

Associations Strati
 emu 20103

Parties

File Edit

Rutkowski

Party Details
 Party Type:
 Person Details
 Title: Mr.
 First: Frank
 Middle: Edwin
 Last: Rutkowski
 Suffix:
 Other Names: 1 ter
 Gender:
 Language
 Primary:
 Dialect:
 Derived Names
 Automatic: Yes No
 Salutation: Frank
 Full: Frank Edwin Rutkowski [Mr.]
 Brief: F. E. Rutkowski
 Cited: Rutkowski, Frank E.
 Taxonomic: Rutkowski (F. E.)

People/Organizations

Display | Party 1 of 1 emu 20103

Classification
 Parent: Junonia
 Family & No.: Nymphalidae
 Genus & No.: Junonia
 Subgenus:
 Species: coenia
 Subspecies:
 Other: [Other Rank] [Other Value]
 Seq. Num.:
 Scientific Name Automatic? Yes Name: Junonia coenia
 Currently Acco
 Currently Acco

Controls
 Applicable Code: ICZN Rank: Species
 Department: Entomology
 Hybrid & Parentage
 Hybrid? No Rank:
 Sex: unknown Parent:
 unknown
 unknown
 Cultivar Name
 Cultivar? No Name:

Taxonomic Names

Display Taxon 1 of 1 emu 20103

Who & How?



Sort to Family
and Subfamily



Sort to Genus
and Species



Sort within Species to
Optimize Databasing



Database

Who & How?



Sort to Family and Subfamily



Sort to Genus and Species



Sort within Species to Optimize Databasing



Database

Who & How?



Sort to Family and Subfamily



Sort to Genus and Species



John Ascher

Who & How?



Sort to Family and Subfamily



Sort to Genus and Species



Sort within Species to Optimize Databasing



Database

Who & How?



Sort to Family and Subfamily



Sort to Genus and Species



Sort within Species to Optimize Databasing



Database

Who & How?



Student-Powered Paracurating



Sort to Family
and Subfamily



Sort to Genus
and Species



Sort within Species to
Optimize Databasing



Database

Student-Powered Paracurating



FIRST PASS: sort within species to state/province, or “digestible” geographical unit

Student-Powered Paracurating



FIRST PASS: sort within species to state/province, or “digestible” geographical unit

Student-Powered Paracurating



SECOND PASS: sort into “taxon lots” that reflect more fine-grained label metadata

Student-Powered Paracurating



SECOND PASS: sort into “taxon lots” that reflect more fine-grained label metadata

Student-Powered Paracurating



“Read” species in the drawer in columns from left to right, tags demark new species

Student-Powered Paracurating



“Read” species in the drawer in columns from left to right, tags demark new species

Student-Powered Paracurating



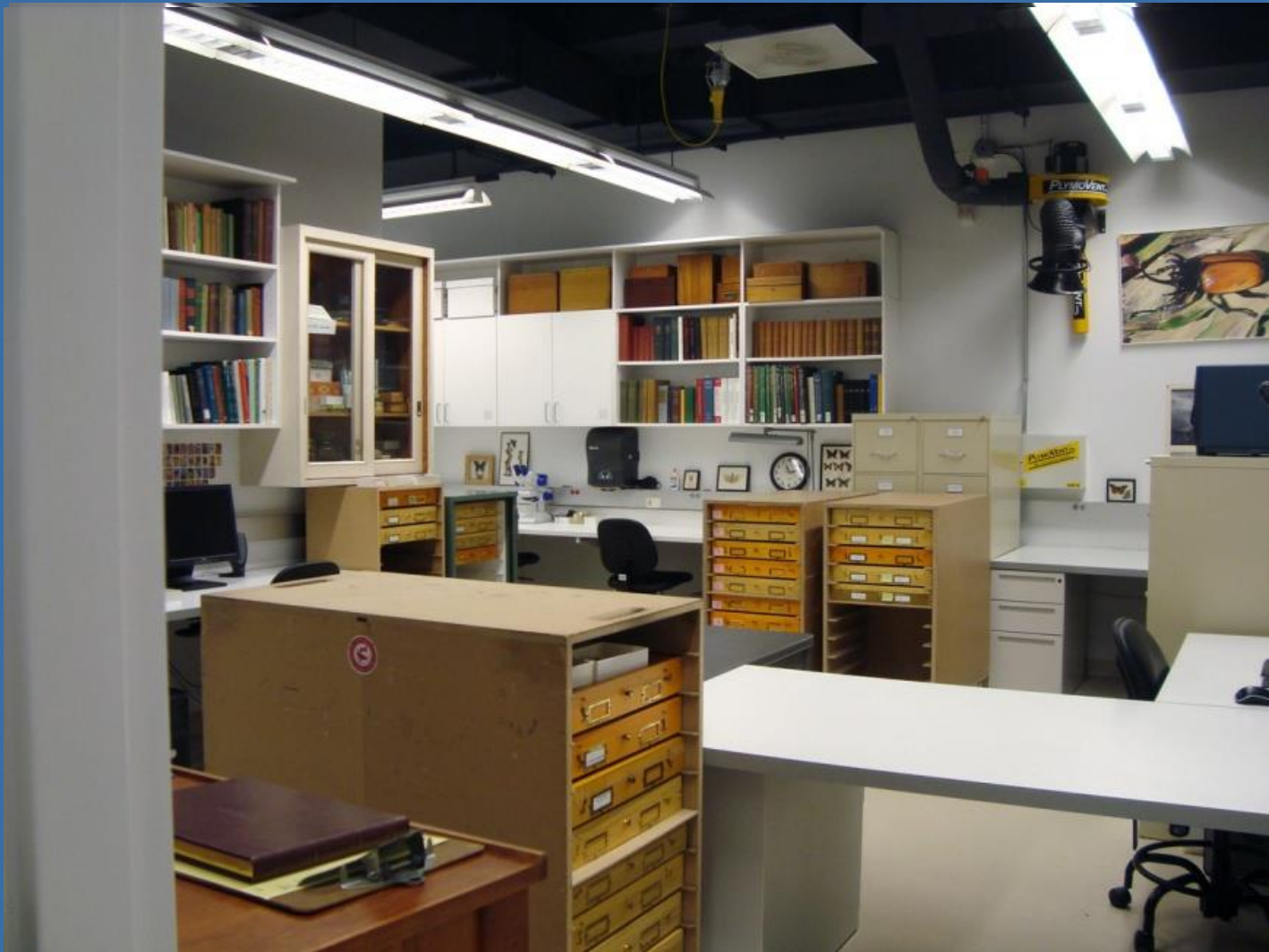
Ready for EMu data entry, workroom cleaned, drawers in moveable carts or storage

Student-Powered Paracurating



Ready for EMu data entry, workroom cleaned, drawers in moveable carts or storage

Student-Powered Paracurating



Ready for EMu data entry, workroom cleaned, drawers in moveable carts or storage

Student-Powered Paracurating



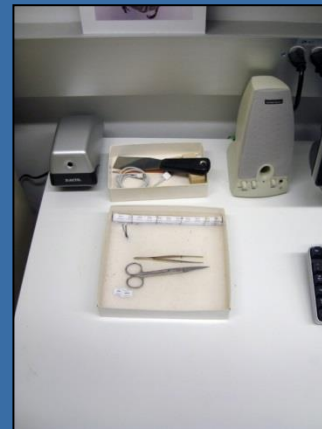
Ready for EMu data entry, workroom cleaned, drawers in moveable carts or storage

Student-Powered Paracurating



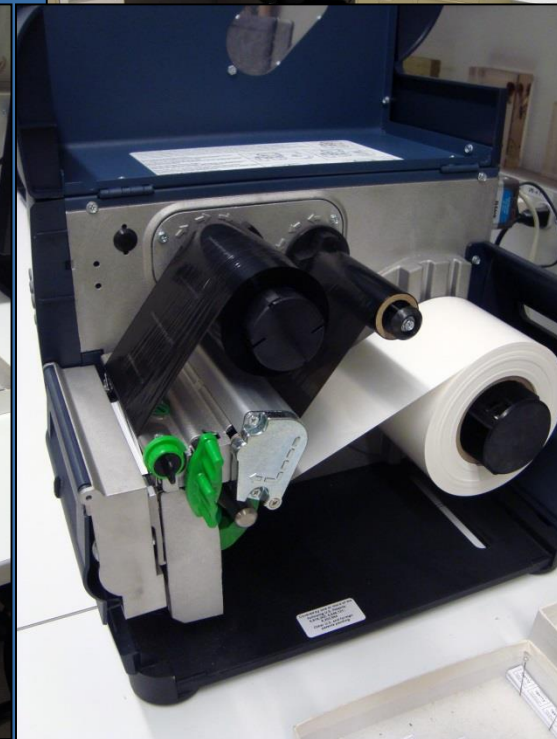
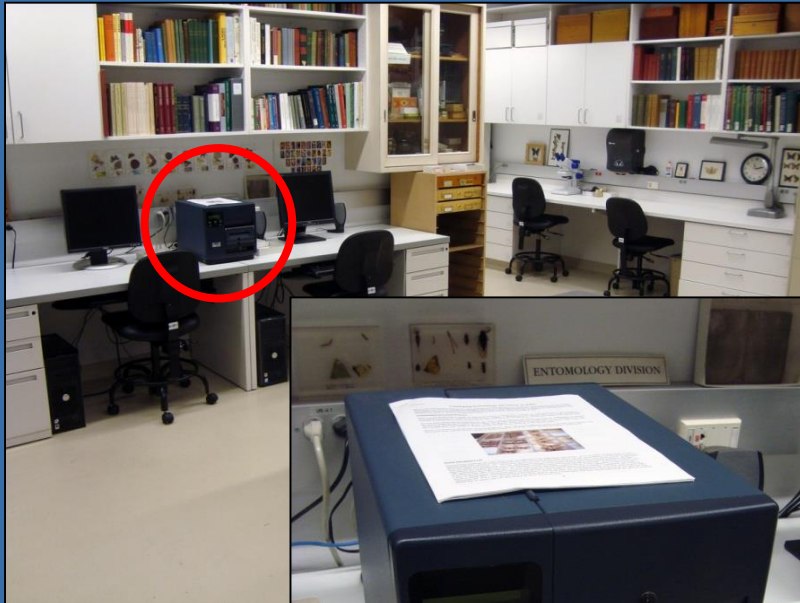
Some aspects of data entry

Student-Powered Paracurating



Some aspects of data entry

Student-Powered Paracurating



Some aspects of data entry



29 Aug 2012

Cataloging Entomology Specimens in EMu

This is a brief instruction manual for cataloging specimens in KE EMu, the Peabody's collection management system. Most times you will be working from drawers that have been prepared for data entry. If you have any questions, any information seems to be missing, or something just seems wrong, ask Larry. The collections are far from perfect, and deciphering labels is often an intriguing art form, so there will be many questions to ask!

Organization of Cornell Drawers

Each Cornell drawer that is ready for data entry will have one or more butterfly or moth species in it. Everything is arranged sequentially in a drawer, usually in four columns of pinning trays of varying sizes. You "read" the drawer's contents by going down each column one by one, starting at the top left of the drawer and ending at the bottom right.

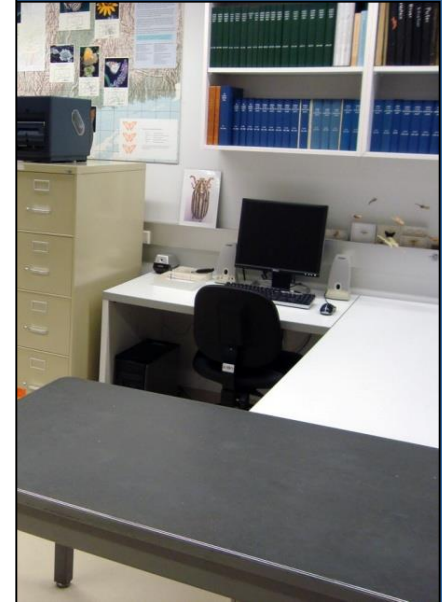
In most cases there will be a handwritten tag with a species name in the top left pinning tray. Depending on whether the drawer contains one or more species, there will be other handwritten tags in the trays. This indicates where one species ends and another begins, as you "read" the drawer. Some drawers contain only one species and so may not have handwritten tags inside, in which case the outside drawer label gives the species name.

Below is a drawer in the process of being databased – there are several different species in the first three columns that have been done, and the fourth column is being worked on (note the yellow tag with the species name on it).

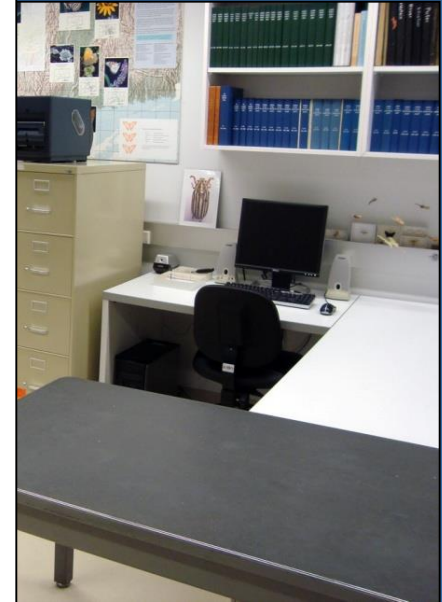


About Specimen Lots

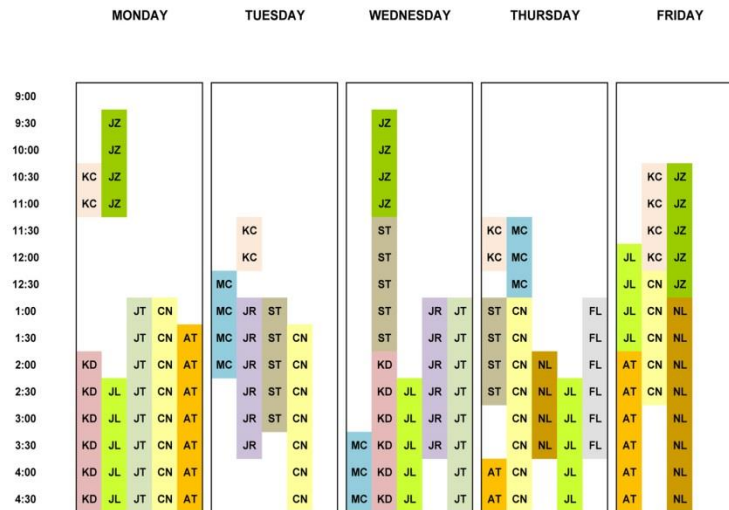
Entomology catalogs by "specimen lots" as opposed to by individual specimens. A lot consists of specimens of one species that bear identical label information: all collected at the same place, on the same date(s), by the same person(s), from the same accession, etc. Whenever practical, lots will have been placed into their own pinning tray. In drawers that are ready for databasing, lots are identifiable because their pinning trays have been turned around so that the specimens are upside down. Only one database record is required for an upside down tray. Trays that contain "one-off" specimens are right side up -- in such trays, each specimen needs to have its own database record (note that sometimes one-offs have been treated as lots, and are turned upside down; this is usually a judgment call made by Larry to allow some expansion space in the drawer in the future). For each pinning tray, you will need to print and insert a "head label" (see Printing Labels below). The head label for an upside down tray serves as the label for that specimen lot. For a tray of one-offs, you will need to print a head label, but also attach individual pre-printed number labels for as many one-off specimens as there are in the tray.



Student-Powered Paracurating



SPRING 2013



MC=Maria Correa KC=Kathryn Culhane KD=Kristen Dowling NL=Nora Moraga-Lewy
 JL=Jessica Lopez NM=Natalie Morningstar CN=Charlotte Newell JR=Jasmine Reid
 AT=Alex Terrell ST=Sydney Treuer JT=Jesse Tordoff FL=Florence Loi JZ=Jeff Zirlin

Student-Powered Paracurating



Some aspects of data entry

CRITICAL !!

Student-Powered Paracurating



Some aspects of data entry

CRITICAL !!

Student-Powered Paracurating



Some aspects of data entry

CRITICAL !!

So, how well does this work with students ?

Student-Powered Paracurating 2007-2012 Summary

The Village



57 students

Student-Powered Paracurating
2007-2012 Summary

The Village



57 students

149,041 lots
273,020 specimens
9,320 hours
\$118,471 total

27 specimens / hour
\$0.43 / specimen

paracurating & databasing

Student-Powered Paracurating
2007-2012 Summary

The Village



57 students
(Provost Office split)

149,041 lots
273,020 specimens
9,320 hours
\$118,471 total

27 specimens / hour
\$0.43 / specimen

paracurating & databasing

\$59,603 total
\$0.22 / specimen

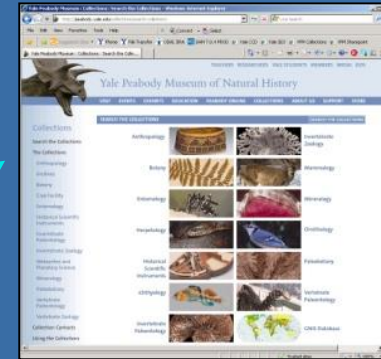
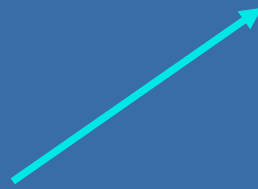
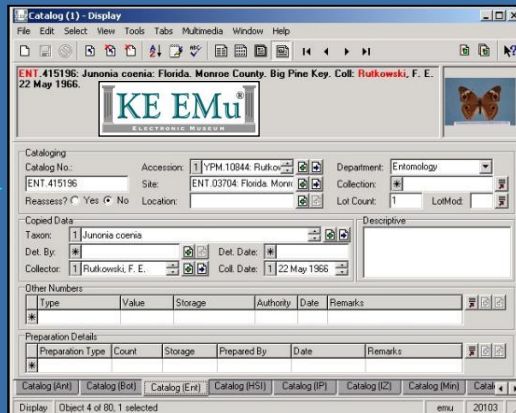
Student-Powered Paracurating



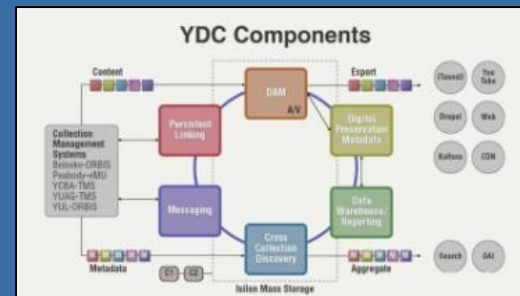
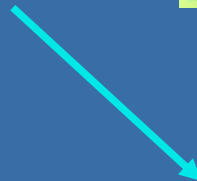
Nicole Palffy-Muhoray
Grad. Student, Linguistics

Automated nightly metadata & image delivery to portals

1997



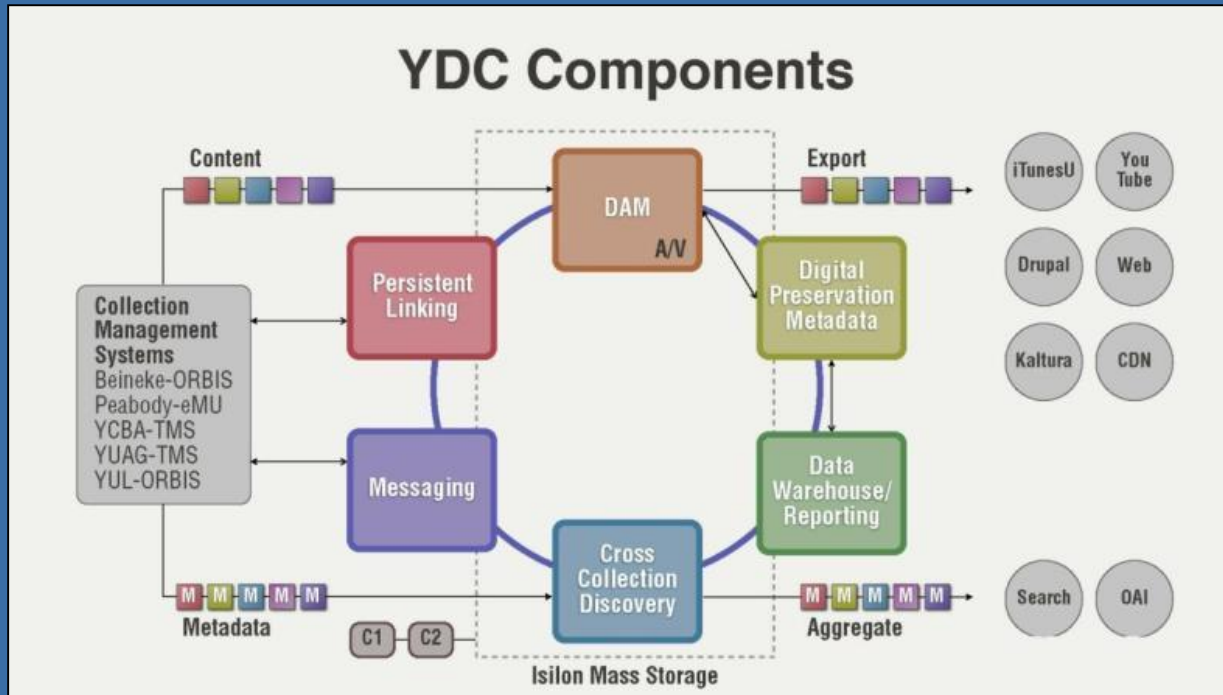
2004-2006



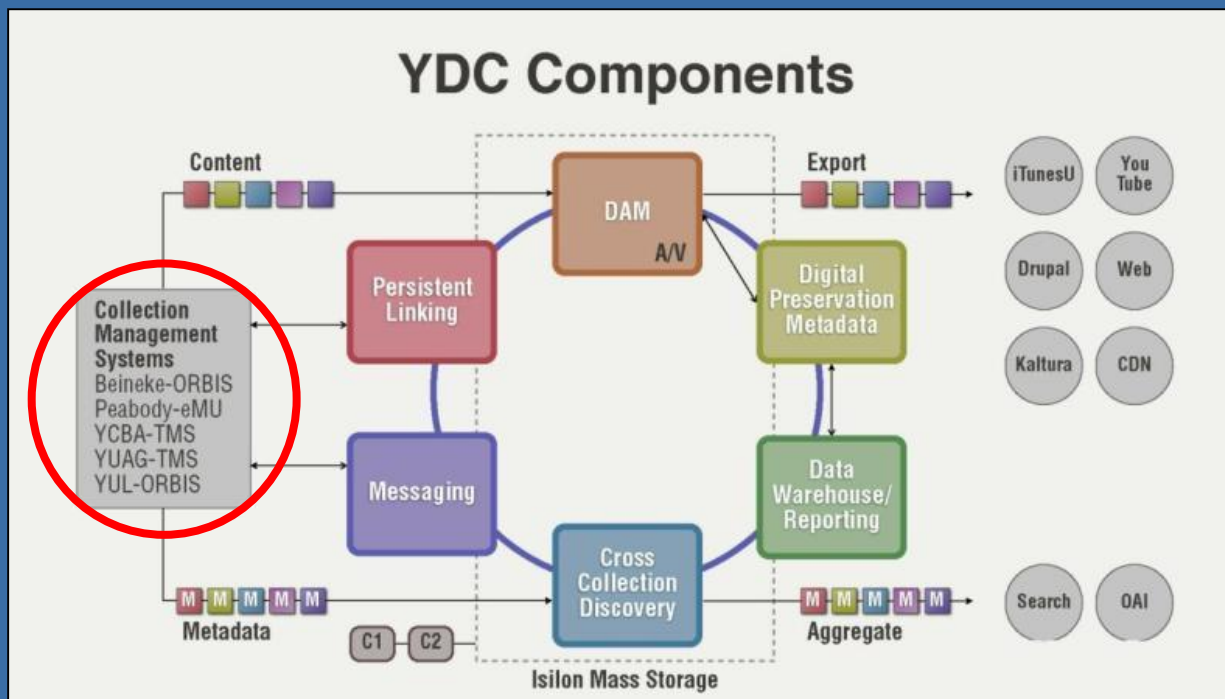
Yale Digital Commons

2010-2013

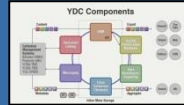
YDC Components



Partnership operated via Yale's Office of Digital Assets & Information



Partnership operated via Yale's Office of Digital Assets & Information



Yale Art Gallery



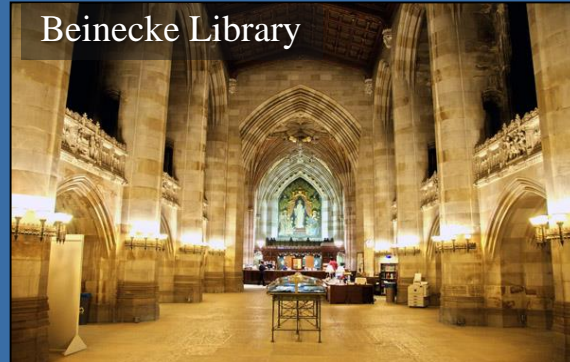
Yale Center for British Art



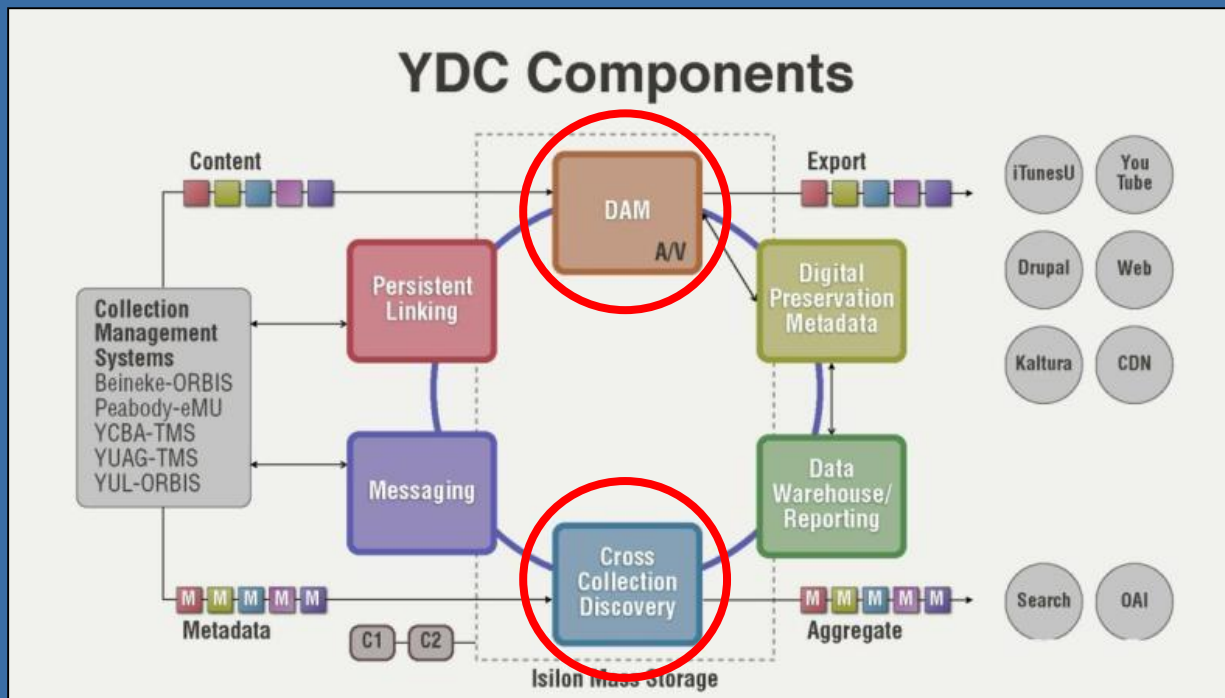
Peabody Museum



Beinecke Library

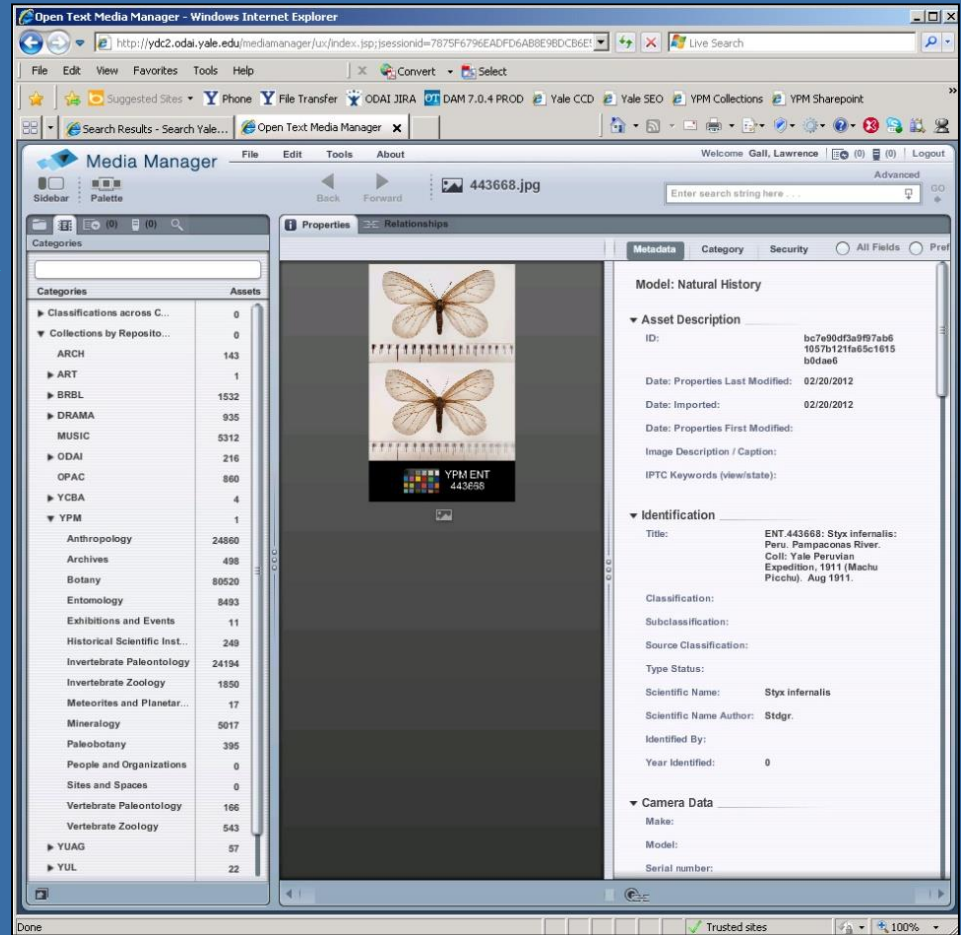
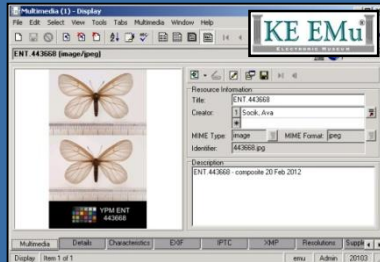


Partnership operated via Yale's Office of Digital Assets & Information



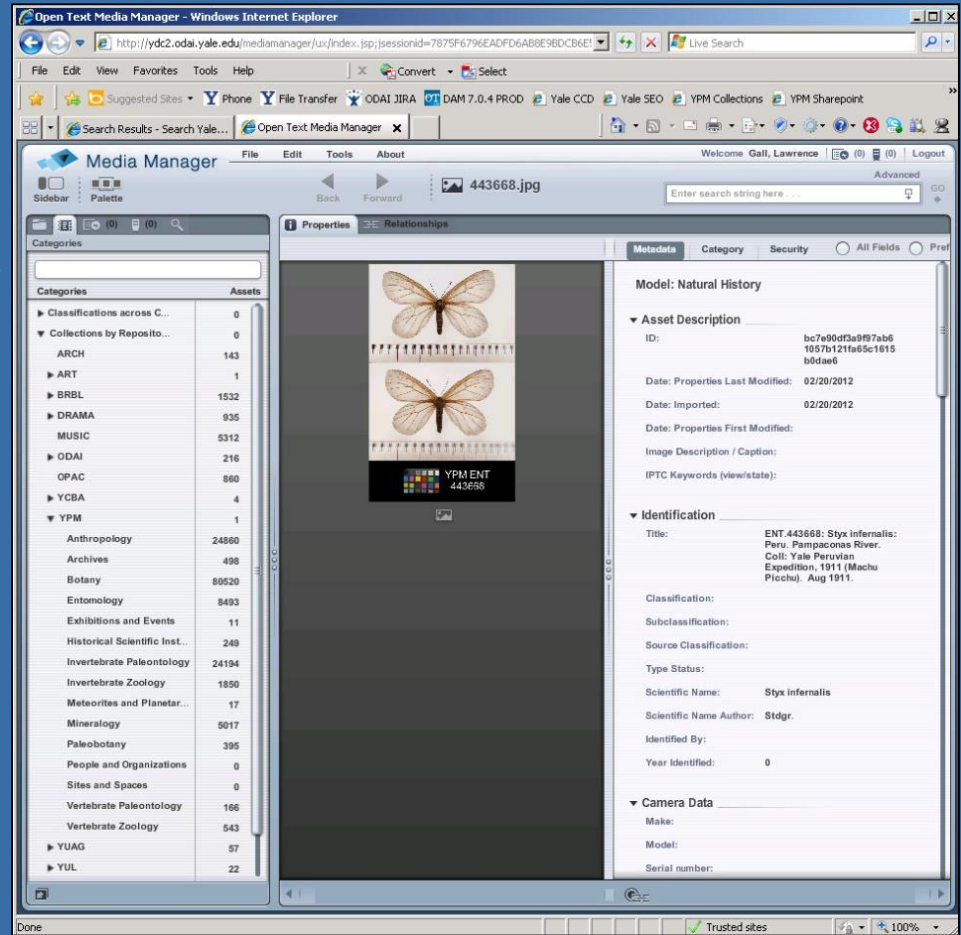
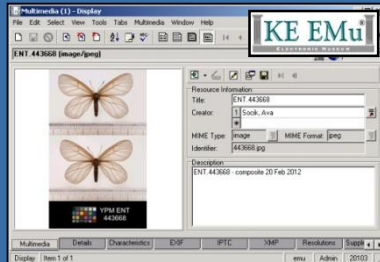
Partnership operated via Yale's Office of Digital Assets & Information

"Styx"



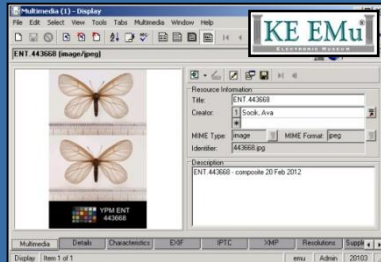
Yale DAM – OpenText Media Manager

"Styx"



Yale DAM – OpenText Media Manager

"Styx"



Search Results - Search Yale Digital Content - Windows Internet Explorer

http://discover.odai.yale.edu/ycd/Search/Results?lookfor=styx&type=allfields&filter%5B%5D=resor

Discover Yale Digital Content

styx Find Advanced Search

Retain my current filters

Home Search: Styx

Narrow Search

Showing 1 - 4 of 4 for search: 'styx', query time: 0.26s

Sort Relevance

Remove Filters

Availability: Resource available online

Availability
Resource available online

Repository
Yale Peabody Museum of Natural History (2)
Yale Center for British Art (1)
Yale University Art Gallery (1)

Collection
Entomology (2)
Paintings and Sculpture (1)
Prints, Drawings, and Photographs (1)

Creator
Stdgr (2)
Léon Davent (1)
Unknown artist, 19th century, British (1)

Type
Animals and Plants: Invertebrates - Insects (2)
Painting (1)
Works on Paper-Prints (1)






Topic
Aeneas (1)
Aeneas' visit to the underworld (1)
Classical (1)
Palinurus (1)
Publius Vergilius Maro (70 BC–19 BC), classical

Search Tools: Get RSS Feed Email this Search Save Search

Trusted sites

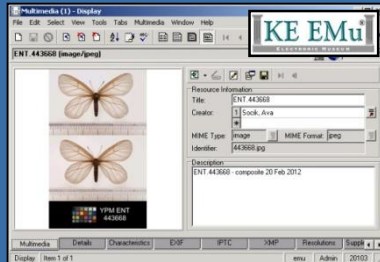
100%

Search Results:

-  *Styx infernalis; South America; Peru; Pampaconas River; Yale Peruvian Expedition, 1911 (Machu Picchu), 1911*
Stdgr.
South America; Peru; Pampaconas River, Yale Peruvian Expedition, 1911 (Machu Picchu), 1911
Entomology, Yale Peabody Museum of Natural History
-  *Styx infernalis; South America; Peru; Pampaconas River; Yale Peruvian Expedition, 1911 (Machu Picchu), 1911*
Stdgr.
South America; Peru; Pampaconas River, Yale Peruvian Expedition, 1911 (Machu Picchu), 1911
Entomology, Yale Peabody Museum of Natural History
-  *Styx infernalis; South America; Peru; Pampaconas River; Yale Peruvian Expedition, 1911 (Machu Picchu), 1911*
Stdgr.
South America; Peru; Pampaconas River, Yale Peruvian Expedition, 1911 (Machu Picchu), 1911
Entomology, Yale Peabody Museum of Natural History
-  *The Eagle of Jupiter Brings Water from the Styx to Psyche*
Léon Davent
Prints, Drawings, and Photographs, Yale University Art Gallery
-  *Aeneas and the Siblyl*
Unknown artist, 19th century, British
Paintings and Sculpture, Yale Center for British Art

Cross Collections Discovery – VuFind & Solr

"Styx"



Search Results - Search Yale Digital Content - Windows Internet Explorer

http://discover.odai.yale.edu/ycd/Search/Results?lookfor=styx&type=allfields&filter%5B%5D=resor

Discover Yale Digital Content

styx Find Advanced Search

Retain my current filters

Home Search: Styx

Narrow Search

Showing 1 - 4 of 4 for search: 'styx', query time: 0.26s

Sort Relevance

Remove Filters

Availability: Resource available online

Availability

Resource available online

Repository

- Yale Peabody Museum of Natural History (2)
- Yale Center for British Art (1)
- Yale University Art Gallery (1)

Collection

- Entomology (2)
- Paintings and Sculpture (1)
- Prints, Drawings, and Photographs (1)

Creator

- Stdgr (2)
- Léon Davent (1)
- Unknown artist, 19th century, British (1)

Type

- Animals and Plants: Invertebrates - Insects (2)
- Painting (1)
- Works on Paper-Prints (1)

Topic

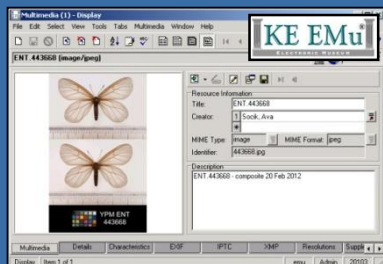
- Aeneas (1)
- Aeneas' visit to the underworld (1)
- Classical (1)
- Palinurus (1)
- Publius Vergilius Maro (70 BC–19 BC), classical

Search Tools: Get RSS Feed Email this Search Save Search



Cross Collections Discovery – VuFind & Solr

"Styx"



Search Results - Search

Discover

Home Search: Styx

Narrow Search

Remove Filters

Availability: Resource

Availability
Resource available onl

Repository
Yale Peabody Museum
Yale Center for British
Yale University Art Ga

Collection
Entomology (2)
Paintings and Sculptur
Prints, Drawings, and f

Creator
Stdgr (2)
Léon Davent (1)
Unknown artist, 19th c

Type
Animals and Plants: In
Painting (1)
Works on Paper-Prints

Topic
Aeneas (1)
Aeneas' visit to the un
Classical (1)
Palinurus (1)
Publius Vergilius Maro (70 BC-19 BC), classical

Search Tools: Get RSS Feed Email this Search Save Search



Sharepoint

Advanced Search

Sort

Relevance



Cross Collections Discovery – VuFind & Solr

The Village



The Village



First Village Alumna
Gilene Young, Yale '07

