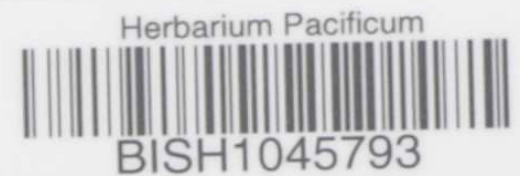
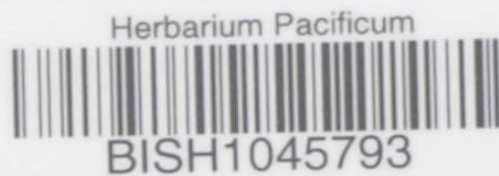
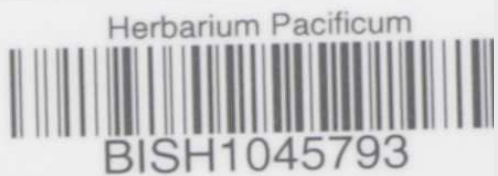


Herbarium Pacificum Barcoding Procedures & Information



Varnelle Magoon & Nicholas Walvoord





FLORA OF FIJI 16907

Name
Family
Common name
Collector ACS, JWF, FBT, DK
Island or Province Taveuni
Locality Above Qacavulo Estate
Habitat Forest
Growth form Palm Height 35-40'
Altitude 1950'
Flower
Fruit Bright orange, about 1" x 3/4"
Special notes Leaf 8' long, pinnae
at tip 6" at middle 2 1/2" at
base 12-15". Leaf base
18-24"
Economic uses
Date 2. 5. 69



ARE.5

Veitchia simulans H. E. Moore
S. Zona (FTG) & D. Fuller (BM) 10-21 Aug. 1998
A revision of *Veitchia* (Areaceae: Arecoideae)

Herbarium of Remice P. Bishop Museum
Cited in Smith J. 414

DET. Robert W. Read
Botanist Emeritus
Smithsonian Institution

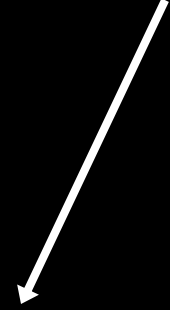
Funded by NSF Grant #BSR 89-12264
27 Apr 1995

DEPARTMENT OF AGRICULTURE
HERBARIUM

Family Index No. 16907
Name *Veitchia simulans* H. E. Moore
Locality Taveuni: Above Qacavulo Estate
Collector ACS, JWF, FBT, DK Date 2. 5. 69
Identified by A. C. Smith

Sheet 1

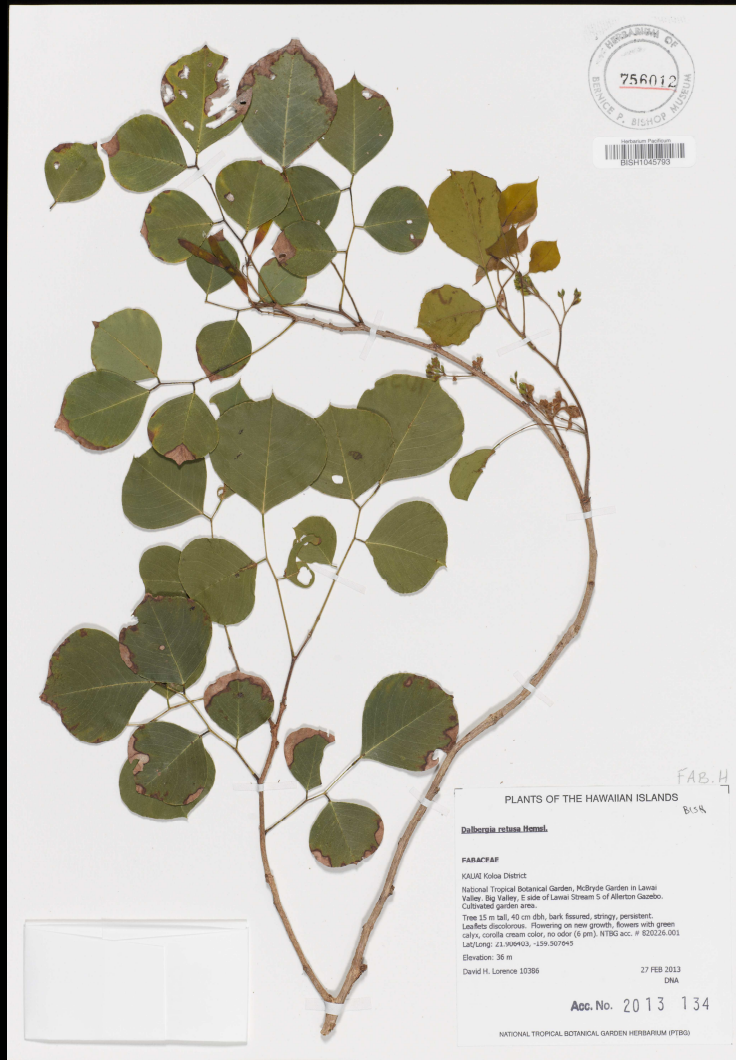
older barcodes were self generated,
leading to human error



Herbarium Pacificum

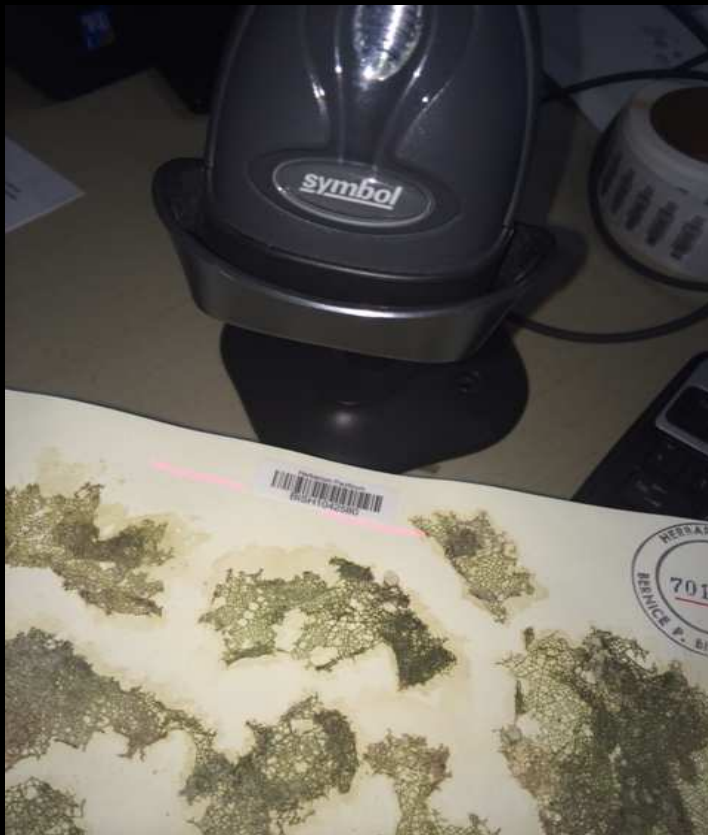


BISH1045793



Herbarium
Bishop Museum
Herbarium
Copyright reserved

Work Flow



Microsoft Access - [Main - Form]

File Edit View Insert Format Records Tools Window Help Adobe PDF

USER: Vanelle, M COLLECTION: Hawaiian Islands Barcode Warning Refresh

SPECIES NAME: View: Form Table Labels

SHEET NO: 739354 BARCODE: BISH1040744 ACC. NO: 2009.133 DE ACC

SPECIES NAME: Halimeda kamoana Allinity

BASIONYM: CULTVAR:

DETERMINER: Iwata, R. I. DET. DATE: 05 Oct 2012 DET INST: BISH LOCAL NAME:

Type Status: Not a Type Type Notes:

COLLECTOR: Okano, R. HABITAT:

COLL TEAM:

COLL NUM: Pw 20050 DATE: 03 Aug 2005 PLANT DESC:

Island: Lana'i Hi. Grp: Main Hawaiian State: Hawai'i Count: USA Reg: Northern Polyn. Zone: Pacific Ocean COMMENT: Latitude/Longitude Ancillary Collections

Loc: Lana'i Source: Datum: LAT DEG: 20 LONG DEG: 157

VERBATIM LOCALITY AS IT APPEARS ON LABEL DUPLICATES: LAT MIN: 157 LONG MIN: LAT SEC: 54.814 LONG SEC: 4.281

ELEV: 12213.7 m DEPTH: LAT DIR: N LONG DIR: W

VOUCHER: Voucher by: [Redacted]

Print Label Complete Created: Vanelle, M 30.11.2012 Updated: Vanelle, M 3.03.2014

Record: 14

Form View

NLM

Pro's

- ability to locate specimens
- tracking specimens for loan
- linking specimen photo with database
- reduces human error

Con's

- expensive to barcode
- holds less information than 2D Data Matrix codes



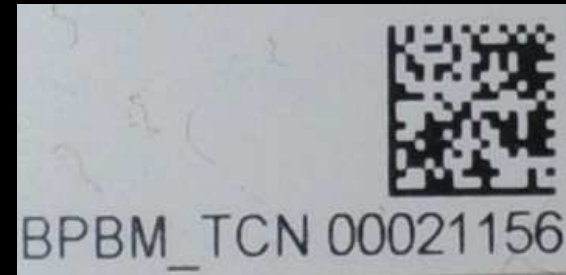
- bulky



2D Data Matrix Codes

Benefits

- cost efficient
- read in 360° eliminating negative effects from background
- universal algorithm to generate 2D Data Matrix
- size is 1/10 to 1/100 of Barcode given equal encoded data
- 100 x the information than a conventional barcode



(Bishop Museum's Natural Science Department/Entomology Photo
Courtesy: David Preston & Keith Arakaki)