

MARK SBAJ PÉREZ
COLLECTION MANAGER OF FISHES

THE
ACADEMY
OF NATURAL
SCIENCES
- PHILADELPHIA -

THE
ACADEMY
OF NATURAL
SCIENCES
*of DREXEL UNIVERSITY**

*Doing Business As
(DBA) Name

ACADEMY OF NATURAL SCIENCES OF PHILADELPHIA



Specimens ca. 1.4 million

12th

Lots ca. 140,000

9th

pre-1900 (1817–1899)

Species ca. 15,000

4th

Tissues 6,000 cataloged

3rd

ca. 2,300 uncat.

Types

Primary 2,844

2nd

Secondary 16,123

4th

Loans (2001-11)

Specimen 48/yr

5th

Tissue 12/yr

(Poss & Collette 1995)

Tissue samples 138/yr

1,651 total



FISH COLLECTION

ACADEMY OF NATURAL SCIENCES OF PHILADELPHIA



NSF Collection Support

James Böhlke

1972-83

\$522,059

Curation

1977-78

\$110,000

Compactors

John Lundberg (PI) & Mark Sabaj Pérez (CoPI)

2008-12

\$191,611

Type Imaging

DBI 0749515

2012-15

\$145,513

GeoRef. Collab.

CSBR 1202953

FISH COLLECTION



Images & Plate by Kyle Luckenbill

Minimize

Negative
Impacts on:

Specimens &
Equipment

Workflow in
Field & Lab

Time from
Capture to Internet

Physical &
Mental Health

Minimize

Post-capture Editing & Indexing

Maximize

Information Content of Specimen

Imaging of Natural History Specimens



Photo by Cristina Sabaj Pérez, Mongolia, 2006



Photo by Jon Armbruster
Iquitos, Peru, 1997



Photo by Brian Sidlauskas
Iquitos, Peru, 2003



Photo by Leandro Sousa, rio Xingu, Brazil, 2012



Photo by Jon Armbruster
Guyana, 2003



Peckoltia sabaji, rio Xingu 2012





1 cm



1 cm



1 cm















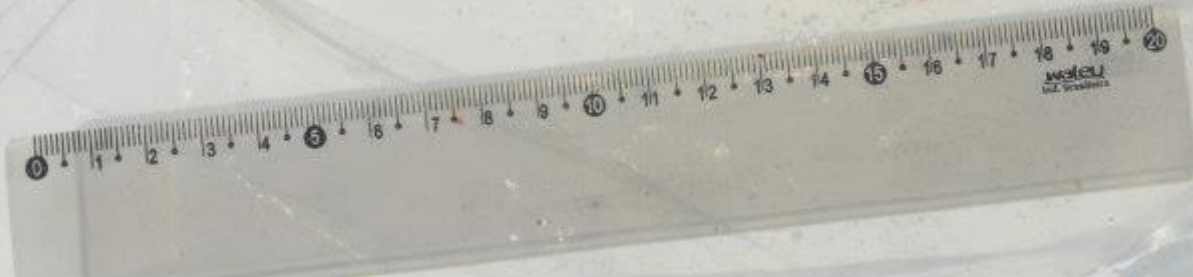












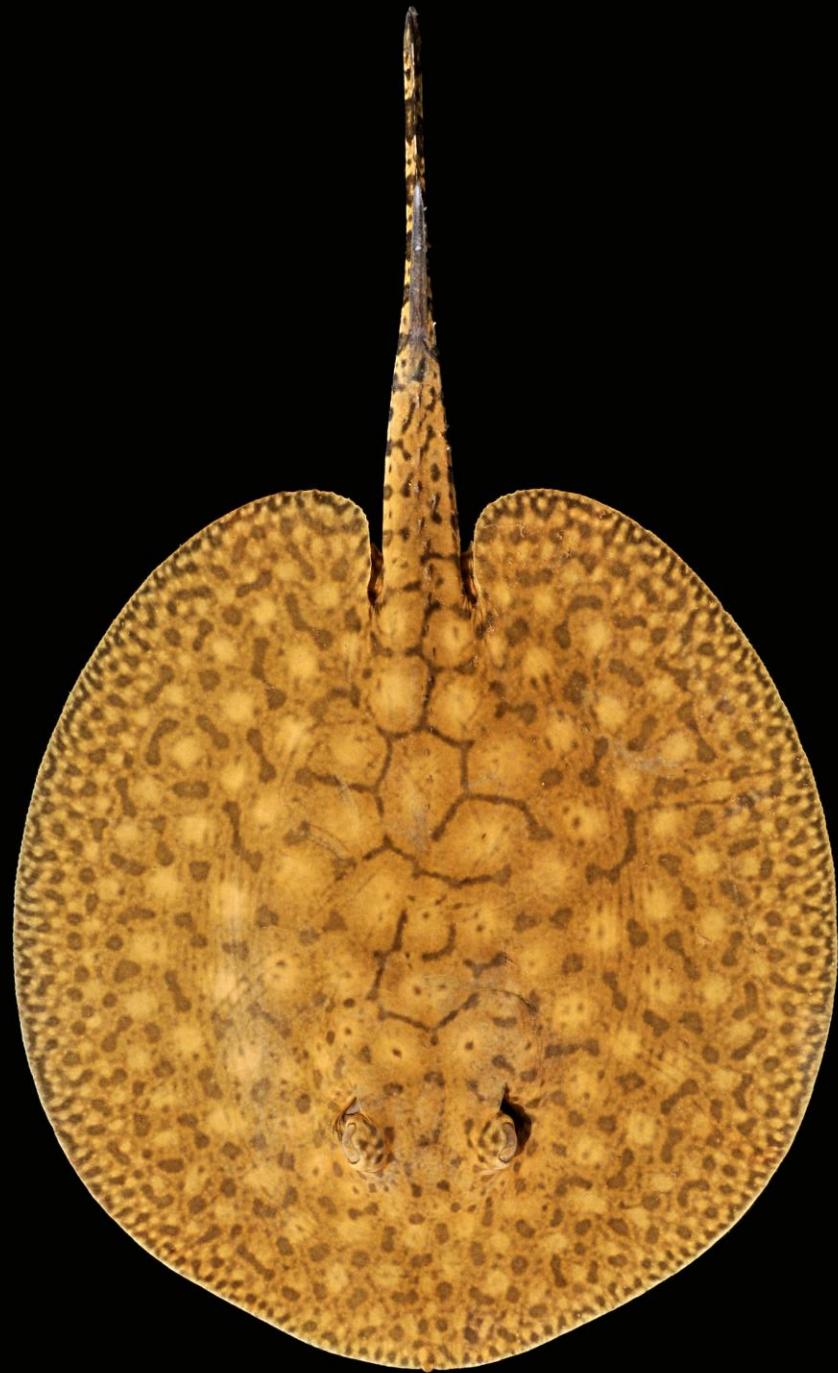












Photo by Leandro Sousa, rio Xingu, Brazil, 2012











ANSP 180600 (4736), 54.5 mm SL
TCEP 04-25, elev. 1835 m



ANSP 180600 (4737), 63.3 mm SL
TCEP 04-25, elev. 1835 m



4469, 56 mm SL
TCEP 04-18, elev. 2994 m



MUSM to be cataloged (4468), 30.7 mm SL
TCEP 04-18, elev. 2994 m



ANSP 180600 (4738), 62 mm SL
TCEP 04-25, elev. 1835 m



ANSP 180600 (4739), 48.9 mm SL
TCEP 04-25, elev. 1835 m



ANSP 180609 (4470), 27.6 mm SL
TCEP 04-18, elev. 2994 m



ANSP 180609 (4470), 27.6 mm SL
TCEP 04-18, elev. 2994 m



ANSP 180600 (4735), 35.82 mm SL
TCEP 04-25, elev. 1835 m



ANSP 180600 (4740), 32.1 mm SL
TCEP 04-25, elev. 1835 m



180606 (4488), 73.8 mm SL
TCEP 04-20, elev. 2643 m



180606 (4487), 75.7 mm SL
TCEP 04-20, elev. 2643 m



ANSP 180594 (4839), 73.6 mm SL
TCEP 04-28, elev. 795 m



ANSP 180594 (4784), 71.8 mm SL
TCEP 04-28, elev. 795 m



ANSP 180605 (4490), 110.5 mm SL
TCEP 04-21, elev. 1840 m



MUSM to be cataloged (4492)
TCEP 04-21, elev. 1840 m



ANSP 180594 (4505), 55.6 mm SL
TCEP 04-28, elev. 795 m



ANSP 180594 (4781), 58.3 mm SL
TCEP 04-28, elev. 795 m



ANSP 180605 (4491), 63.8 mm SL
TCEP 04-21, elev. 1840 m















DORAS CASTANEO-VENTRIS.











Photo by Leandro Sousa, rio Xingu, Brazil 2012

Photo by Oliver Crimmen
The Natural History Museum
London, UK





waddellii, *Gymnocypris* Regan 1905:300, **BMNH 1905.2.8.12-15**

photo by Mark Sabaj Pérez, 2011 © The Natural History Museum, London



waddellii, *Gymnocypris* Regan 1905:300, BMNH 1905.2.8.12-15 (1 of 3)
photo by Mark Sabaj Pérez, 2011 © The Natural History Museum, London

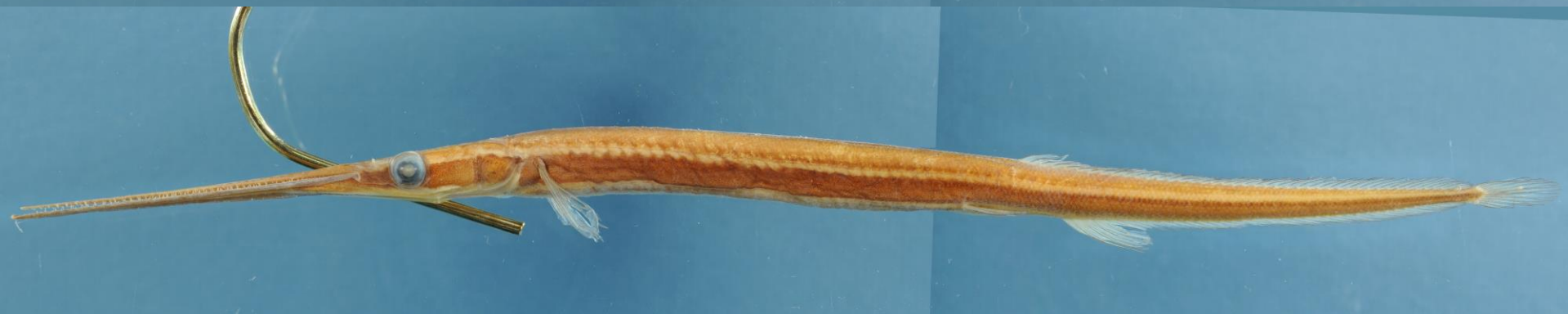
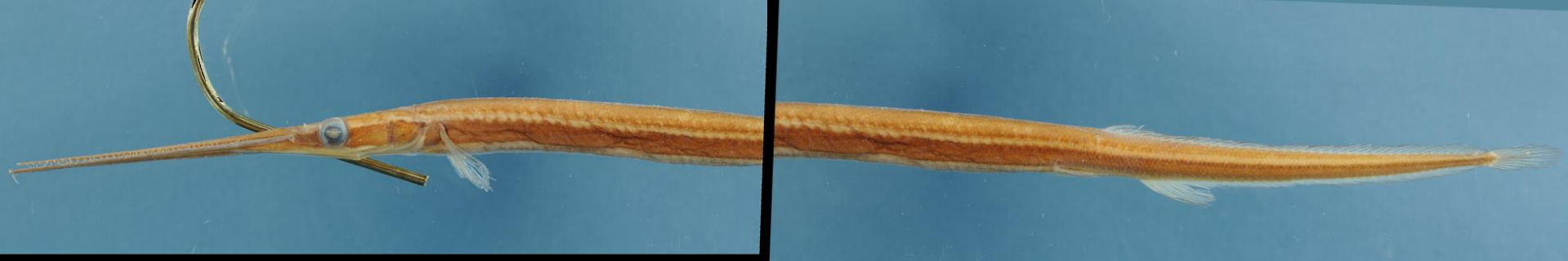
platypus, *Leuciscus*, Temminck & Schlegel 1846, BMNH 1846.2.16.73, Paralectotype, 102.5 mm SL

Photo by Mark Sabaj Pérez

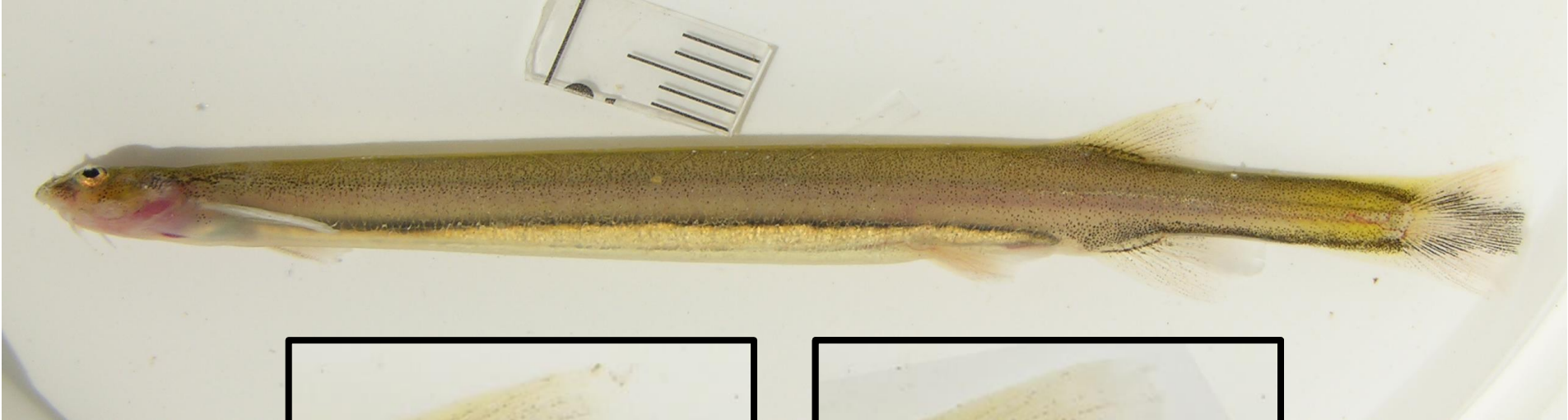
© The Natural History Museum, London



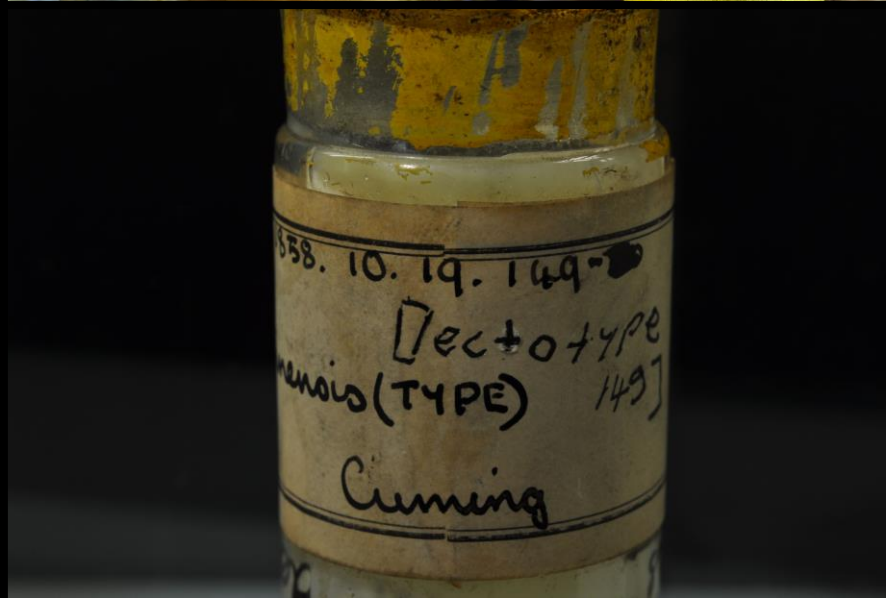
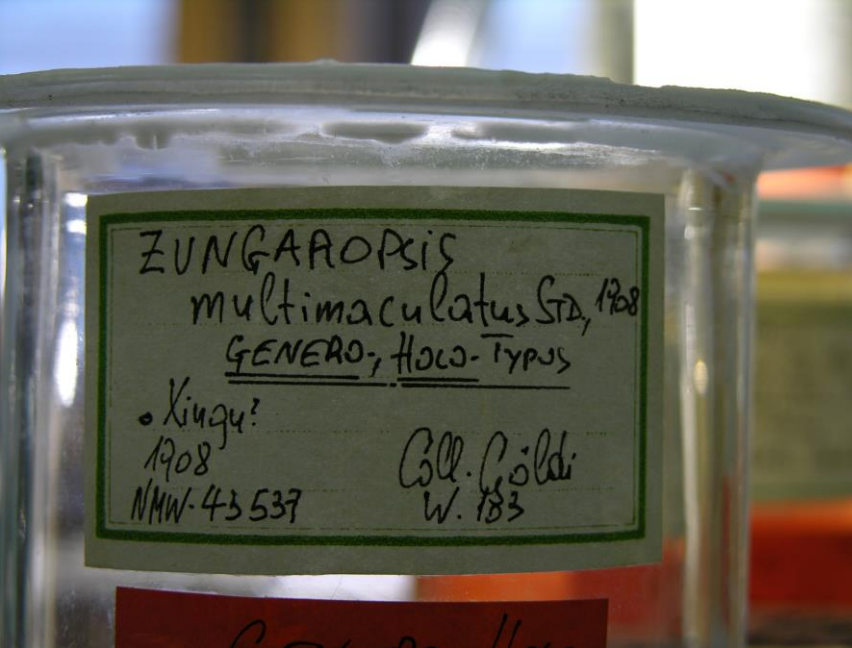








4 mm



Browse
 HOME LOCALITY DATABASE
 Layout: PRIMARY
 Record: 1
 Found: 1
 Total: 140289
 Unsorted
 museum: ANSP
 catalog_number: 180918
 storage: TYPE COLL
 field_number: V87-27
 genus: Leptodoras
 species: cataniai
 subspecies:
 questionable:
 type_status: Holotype
 determiner_year: M.H. Sabaj, 2005
 cataloger_year: MHS/2005
 previous_number: ex. ANSP 161532
 create_date: 12/06/2005
 inventory: F
 primary_remarks: Named in honor of David C. ...
 Eschmeyer's Catalog of Fishes
 IMAGED?
 View/Edit Loan
 loaned to:
 outgoing comments:



Invoice of Museum Transaction DEPARTMENT OF ICHTHOLOGY ACADEMY OF NATURAL SCIENCES 1900 BENJAMIN FRANKLIN PARKWAY PHILADELPHIA, PENNSYLVANIA, USA 19103-1195

INVOICE 2000-014

INSTRUCTIONS

- To finalize transaction, please
1. Verify description below (change/add information as necessary)
 2. Sign & return one copy of invoice to address above.

Signature: _____ Date: _____

DESCRIPTION OF TRANSACTION

Transaction with Dr. Jonathan W. Armbruster
Affiliation & address Department of Zoology and Wildlife Science
 101 Cary Hall
 Auburn University, AL 36849
Advisor (if student)
Category Tissue sample
Transaction Requested tissue sample of frozen specimens of *Scobinancistrus pariolispos* ? (ANSP 177883) (Loricariidae). Responded with muscle tissue preserved and sent in 100% EtOH (tissue sent as gift).

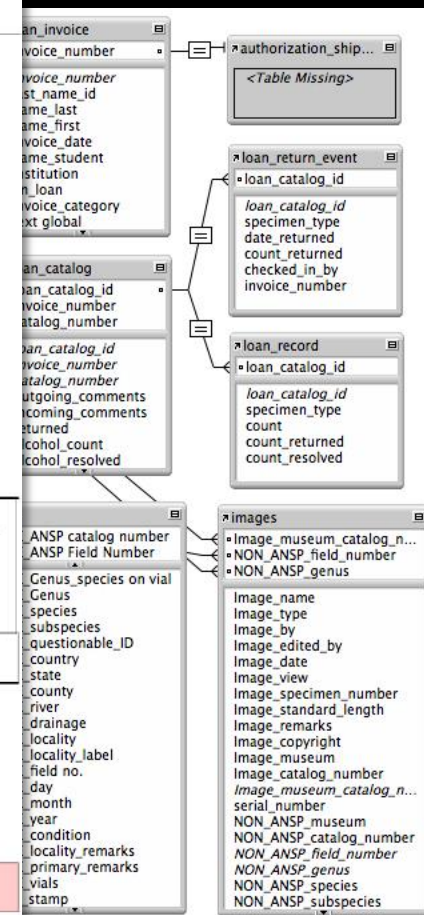
CM Notebook

Filemaker Pro Database

for tracking gifts, loan returns/transfers

record releases & other collection requests

>200/year



One-click
 to Excel
 (e.g., for F

Incoming Gifts	Outgoing Gifts	Outside Loan Ret/Transfers	ANSP Records Searched	ANSP Records Released	Cat. No. Assigned	Measures, Counts, etc.	Identify/ Verify	Photo-graphs	Radio-graphs	Tissue Samples	other
Lots		/								1	
Spec.		/								1	
Böhlke Library	Material researched			Material copied & released			Reprints released				
Transaction with	Dr. Jonathan W. Armbruster			Transaction solicited by ANSP?			No	day	month	year	
Approved by	Mark Sabaj							11	September	2000	
Handled by	Mark Sabaj							10	October	2000	

KEEP THIS COPY OF INVOICE FOR YOUR RECORDS

PRIMARY DATABASE LOCALITY DATABASE TISSUE DATABASE IMAGE DATABASE

serial_number 1

Image_name Anthias_buphthalmos_ANSP13624_S_13_left

[NO BLANK SPACES, NO "." NO file extensions, ALL JPGs]

Image_name_original

Image_type photo - specimen

Image_by Amanda L. Labadie

Image_edited_by Amanda L. Labadie

Image_date 1/28/2009

Image_view left lateral

Image_specimen_number 13

Image_standard_length

Image_remarks

Image_copyright Copyright Amanda L. Labadie, Academy of Natural Sciences. All Rights Reserved.

Image_museum ANSP

Image_catalog_number 13624

Image_museum_catalog_number ANSP_13624

IMAGED? ☒ True ☐ False Time_stamp

NON_ANSP_museum ANSP

NON_ANSP_catalog_number 13624

NON_ANSP_field_number BON-I

NON_ANSP_genus Anthias

NON_ANSP_species buphthalmos

NON_ANSP_subspecies

NON_ANSP_type_status Syntypes

NON_ANSP_questionable

NON_ANSP_determiner_year C.L.Bonaparte, 1833:2(10)

NON_ANSP_cataloger_year HWF/1899

NON_ANSP_previous_number Bonaparte 75

NON_ANSP_primary_remarks ANSP 13624-36. Fowler(1907c:267)listed 13624(type) to 13637;13637 missing. = CALLANTHIAS RUBER (Rafinesque) in CLOFNAM.

Image_field_number_no_spaces BON-I

group_no 40H

Serranidae

RE-LOOKUP PRIMARY DATA

EXPORT IMAGE DATA AS FILEMAKER FOR WEB

Eschmeyer's Catalog of Fishes

Import_date

CURRENT STATUS: SYNONYM OF CALLANTHIAS RUBER (RAFINESQUE 1810). CALLANTHIIDAE.

ANTHIAS BUPHTHALMOS

ANSP field number ANSP Field Number: BON-I

calculate latitude lat_original

calculate longitude long_original

museum ANSP alcohol_count 13

catalog_number 13624 skeleton_count 0

storage TYPE COLL clear_and_stain_count 0

field_number BON-I

genus Anthias

species buphthalmos

subspecies

type_status Syntypes

questionable

determiner_year C.L.Bonaparte, 1833:2(10)

cataloger_year HWF/1899

previous_number Bonaparte 75

primary_remarks ANSP 13624-36. Fowler(1907c:267)listed 13624(type) to 13637;13637 missing. = CALLANTHIAS RUBER (Rafinesque) in CLOFNAM.

expedition_UOI

field_number BON-I

ocean_continent Mediterranean Sea

country Italy

state_province

county_municipality

water_body

locality Italy.

latitude

longitude

elevation

depth

gear

salinity F • M • B

date_begin pre 1849

date_end pre 1849

time

collectors C.L. Bonaparte Collection

locality_remarks Donor Dr. T.B. Wilson.

Image_name = unique identifier
 Anthias_buphthalmos_ANSP13624_S_13-left

VEN_10-34B

TO BE CATALOGED

ANSP_FISH_DATA
COLLECTION_DATA
IMAGE_DATA.fp7
IMAGES
zOLD VERSIONS

ANSP_FISH_DATABASE
COLLECTION_DATA.fp7
IMAGE_DATA.fp7
IMAGES
zOLD VERSIONS

FIELD
FISH
TO BE CATALOGED

ACSI
ANSP_10363_KRL
ANSP_21558_KRL
ANSP_24207_ALL_DW
ANSP_27780_ALL_KRL
ANSP_27799_1_KRL
ANSP_45213_KRL
ANSP_53319_KRL
ANSP_53456_ALL
ANSP_53930_ALL
ANSP_54917_KRL
ANSP_60017_ALL
ANSP_60019_ALL_DRW
ANSP_60020_ALL
ANSP_60172_ALL_DRW
ANSP_60234_ALL
ANSP_60234_ALL2
ANSP_62510_ALL
ANSP_63078_KRL
ANSP_63091_KRL
ANSP_66126_ALL
ANSP_68152_KRL
ANSP_68253_ALL
ANSP_68255_KRL
ANSP_68261_ALL_KRL
ANSP_68296_KRL
ANSP_68381_KRL
ANSP_68432_KRL
ANSP_68450_ALL
ANSP_68521_KRL
ANSP_69150_KRL
ANSP_69480_ALL
ANSP_69721_KRL
ANSP_69989_KRL
ANSP_69991_KRL
ANSP_69993_KRL
ANSP_69995_KRL
ANSP_70070_KRL
ANSP_70074_KRL
ANSP_70075_KRL

not_cataloged
VEN_10-3...2710.JPG
VEN_10-3...2711.JPG
VEN_10-3...2712.JPG
VEN_10-3...2714.JPG
VEN_10-3...2715.JPG
VEN_10-3...2716.JPG
VEN_10-3...2717.JPG
VEN_10-3...2718.JPG
VEN_10-3...2721.JPG
VEN_10-3...2722.JPG
VEN_10-3...2723.JPG

On-line Data & Images


ANSP Fish Database

clade.ansp.org/ichthyology/FTIP/search.php?mode=search&contains=Plagusia&cor

On-line database of fishes at
The Academy of Natural Sciences of Philadelphia
and of images associated with specimens

Plagusia lactea_ANSP8706_S_2_II.jpg (JPEG Image, 2977 × 1411 pixels) - Scaled (47%)

clade.ansp.org/ichthyology/FTIP/images/FISH/ANSP/O_JPG/ANSP_8706/Plagusia_lactea_ANSP8706_S_2_II.jpg



1 cm

Photos by Amanda Labadie

ANSP8706 Specimen No.: 14 Plagusia lactea	ANSP8706 Specimen No.: 14 Plagusia lactea	ANSP8706 Specimen No.: 2 Plagusia lactea	ANSP8706 Specimen No.: 2 Plagusia lactea
--	--	---	---

ANSP Fish Database

ANS clade.ansp.org/ichthyology/FTIP/search.php?mode=search&contains=cyp

NSF - Awards Latin America Jo... Fish Anatomy - ... ANSP Credit Editor ASIH >> Bookmarks

THE ACADEMY OF NATURAL SCIENCES

On-line database of fishes at
The Academy of Natural Sciences of Philadelphia
and of images associated with specimens
at ANSP and other collections

DBI-0749515

ICHTHYOLOGY

SEARCH BY

Taxon or Catalog No. cyprinidae

Locality or Field No.

Use '*' as wildcard. Example: * finds complete list.

VIEW RESULTS AS

☒ Complete Records ☐ Locality Records

☒ Taxonomic List ☐ Locality List

☐ Gallery by Taxa ☐ Gallery by Locality

Search Entire Collection Search Images Only

Database citation, history and acknowledgements

family	genus	species	subspecies
Cyprinidae	Abbottina	psegma	
Cyprinidae	Abbottina	rivularis	
Cyprinidae	Abramis	baelerus	
Cyprinidae	Abramis	ballerus	
Cyprinidae	Abramis	brama	
Cyprinidae	Abramis	elongatus	
Cyprinidae	Abramis	sapa	
Cyprinidae	Abramis	x Rullius	
Cyprinidae	Acanthobrama	dumerili	
Cyprinidae	Acanthobrama	lissneri	
Cyprinidae	Acanthobrama	telavivensis	
Cyprinidae	Acanthobrama	terraesanctae	
Cyprinidae	Acanthorhodeus		
Cyprinidae	Acanthorhodeus	atranalis	
Cyprinidae	Acanthorhodeus	guichenotii	
Cyprinidae	Acanthorhodeus	taenianalis	
Cyprinidae	Acheilognathus	asmussii	
Cyprinidae	Acheilognathus	brevianalis	
Cyprinidae	Acheilognathus	himantegus	
Cyprinidae	Acheilognathus	lanceolatus	
Cyprinidae	Acheilognathus	limbatus	
Cyprinidae	Acrossocheilus	alutaceus	
Cyprinidae	Acrossocheilus	fasciatus	
Cyprinidae	Acrossocheilus	formosanus	
Cyprinidae	Acrossocheilus	invirgatus	
Cyprinidae	Acrossocheilus	kreyenbergii	
Cyprinidae	Acrossocheilus	matsudai	
Cyprinidae	Agosia	chrysogaster	
Cyprinidae	Agosia	metallica	
Cyprinidae	Agosia	novemradiata	
Cyprinidae	Agosia	umatilla	
Cyprinidae	Agosia	yarrowi	
Cyprinidae	Albulichthys	albuloides	
Cyprinidae	Alburnellus	altipinnis	

ANSP Fish Database

ANS clade.ansp.org/ichthyology/FTIP/search.php?mode=search&contains=cyp

NSF - Awards Latin America Jo... Fish Anatomy - ... ANSP Credit Editor ASIH >> Bookmarks

THE ACADEMY OF NATURAL SCIENCES

On-line database of fishes at
The Academy of Natural Sciences of Philadelphia
and of images associated with specimens
at ANSP and other collections

DBI-0749515

ICHTHYOLOGY

SEARCH BY

Taxon or Catalog No. cyprinidae

Locality or Field No.

Use '*' as wildcard. Example: * finds complete list.

VIEW RESULTS AS

☐ Complete Records ☐ Locality Records

☐ Taxonomic List ☒ Locality List

☐ Gallery by Taxa ☐ Gallery by Locality

Search Entire Collection Search Images Only

Database citation, history and acknowledgements

Ocean/Continent	Country	State/Province	County/Municipality
Africa			
Africa	Africa		
Africa	Algeria		
Africa	Angola		
Africa	Belgian Congo		
Africa	Botswana		
Africa	Cameroon		
Africa	Cameroons		
Africa	Central African Rep.		
Africa	Congo		
Africa	Congo (Democratic Republic of)		
Africa	Ethiopia	Amhara	
Africa	Ethiopia	Gambella	
Africa	Ethiopia	Gamella	
Africa	Ethiopia	Tigray	
Africa	Fr.Equatorial Africa		
Africa	French Eq. Africa		
Africa	French Equatorial Africa		
Africa	Kenya		
Africa	Rhodesia		
Africa	South Africa		
Africa	South Africa	Natal	
Africa	South Africa	Orange Free State	
Africa	Tanganyika		
Africa	Tanzania		
Africa	Tunisia		
Africa	Uganda		
Africa	West Africa		
Africa	Zaire		
Africa	Zambia		
Asia			
Asia	Borneo		
Asia	Burma		

CYPRINIDAE

Abramis persa



BMNH1897.7.5.29 Specimen No.: 1 of 1

Abramis persa

Abramis urmianus

Non-ANSP
Specimens



BMNH1899.9.30.116-117 Specimen No.: 1 of 2, larger

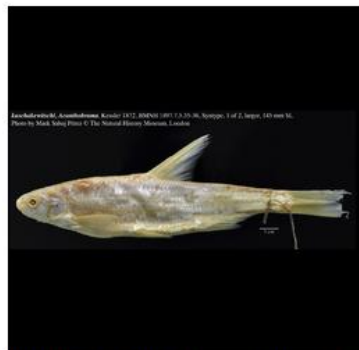
Abramis urmianus



BMNH1899.9.30.118-126

Abramis urmianus

Acanthobrama kuschakewitschi



BMNH1897.7.5.35-36 Specimen No.: 1 of 2, larger

Acanthobrama kuschakewitschi

ANSP Fish Database

ANS clade.ansp.org/ichthyology/FTIP/search.php?mode=search&contains=cyp

NSF - Awards Latin America Jo... Fish Anatomy - ... ANSP Credit Editor ASIHI Bookmarks

THE ACADEMY OF NATURAL SCIENCES

On-line database of fishes at
The Academy of Natural Sciences of Philadelphia
and of images associated with specimens
at ANSP and other collections

DBI-0749515

ICHTHYOLOGY

SEARCH BY

Taxon or Catalog No. cyprinidae

Locality or Field No.

Use '*' as wildcard. Example: * finds complete list.

VIEW RESULTS AS

☐ Complete Records ☐ Locality Records

☐ Taxonomic List ☒ Locality List

☐ Gallery by Taxa ☐ Gallery by Locality

Search Entire Collection Search Images Only

Database citation, history and acknowledgements

Locality
Images

ASIA

MONGOLIA

Arhangay [Arkhangai]

Büdüün Gichgeniy Gol (trib. Chuluut Gol, Selenge Dr.), and smaller tributary at and just upstream of confluence, ca. 14 km south of Tariat.

Seined day/evening 7/26 and morning 7/27. kick seined small, shallow (<1m) trib with substrate of gravel/cobble and vesicular basalt boulders; dragged bag seine along gravel beach (up to 2m) in moderately wide stream at night; set gill net at mouth of smaller trib but caught nothing but algae (in bloom). Large amphipods (*Hyalella azteca*?) abundant in smaller trib (some sent to INHS).



Field no.: MON 11-04

image data



Field no.: MON 11-04

image data

Kahnuy [= Hanuy] Gol (Selenge Dr.), ca. 55 km northwest of Tsetserleg on road to Tariat.

Camped 2 nights. Seined evening 7/24 and morning 7/25. Small river with sinuous course of riffles, runs and pools less than 1 m deep; substrate mostly gravel and cobble with some mud/silt accumulated in pools; water clear.



Field no.: MON 11-02

image data



Field no.: MON 11-02

image data



Field no.: MON 11-02

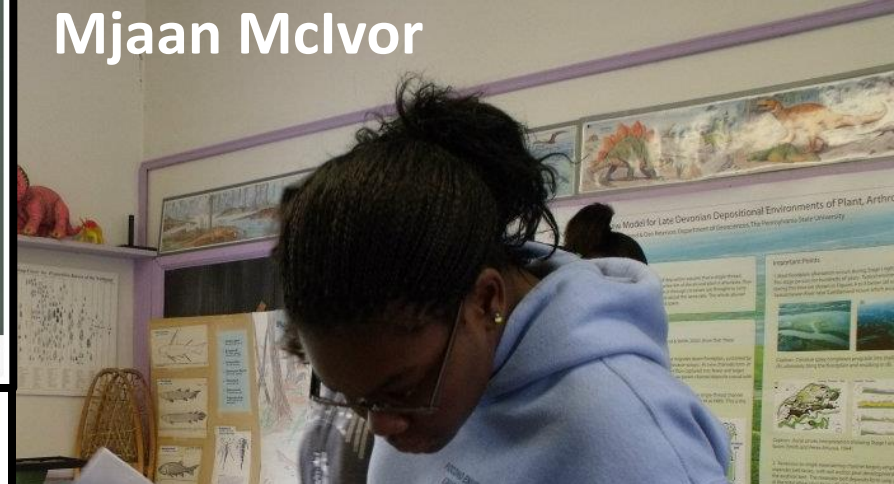
image data



Field no.: MON 11-02

image data

Mjaan Mclvor



VEN 10-11: Río Orinoco, sand beach along small island and exposed rocky shoal across channel from Puerto Venado (near Samariapo), 56.7 km south-southwest of Puerto Ayacucho.

Tag Photo Add Location Edit

Like · Comment · Unfollow Post · Share · Edit



Flávio Lima Hum... maybe true affinis, in fact.

September 13, 2011 at 5:57pm · Like



Donald Taphorn B. alburnoides? has very long anal fin, but cant really see extension of maxilla well

September 17, 2011 at 11:42am · Like



Flávio Lima Yes, I guess you're right, Don... checking the pictures of Bryconops affinis collected in Guyana, they are not elongated or have a long anal fin as this fish. I vote for Bryconops alburnoides, too.

September 17, 2011 at 12:00pm · Like



Antonio Jose Machado Allison affinis is a guyanese species. All others (other basins) could be new

September 19, 2011 at 7:03am · Like



© Mark Zuckerberg



Thanks