



EPICC TCN

Erica Clites, TCN Project Manager
University of California Museum of Paleontology



EPICCC

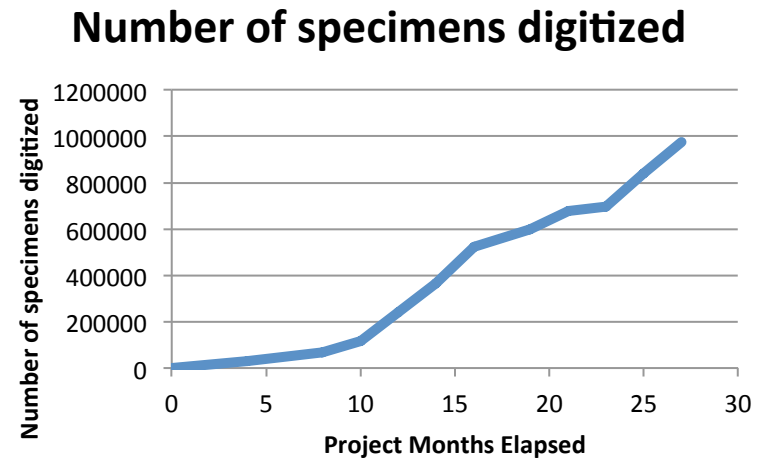
epicctcn.org

Collaborators



Progress

- Specimens digitized:
975k/1.5M; 62%



- Specimens photographed: 26k/83k; 30%
- Localities georeferenced: 22k/35k; 60%



Building a Taxonomic Dictionary

- Existing sources of paleontological taxonomy incomplete, not intended for use as backbone
- Building dictionary based on primary literature
- Can be incorporated in GBIF backbone as checklist upon completion
- A.J.W. Hendy and C. Souto et al.; 6400 rows currently

KINGDOM	PHYLUM	CLASS	ORDER	FAMILY	GENUS	SUBGENUS	SPECIES	AUTHOR	ORIGINAL	SYNONYMS
Animalia	Mollusca	Gastropoda		Acmaeidae	<i>Acmaea</i>		<i>mitra</i>	Rathke, 1833	<i>Acmaea mitra</i>	<i>Acmaea mitra</i>
Animalia	Mollusca	Gastropoda	Cephalaspide	Acteocinidae	<i>Tornastra</i>		<i>cerealis</i>	(Gould, 1853)		<i>Tornastra cerealis</i>
Animalia	Mollusca	Gastropoda	Cephalaspide	Acteocinidae	<i>Tornastra</i>		<i>culcitella</i>	(Gould, 1853)		<i>Acteocina culcitella</i> , 1
Animalia	Mollusca	Gastropoda	Cephalaspide	Acteocinidae	<i>Acteocina</i>		<i>eximia</i>	(Baird, 1863)		<i>Acteocina eximia</i>
Animalia	Mollusca	Gastropoda	Cephalaspide	Acteocinidae	<i>Acteocina</i>		<i>harpa</i>	(Dall, 1871)		<i>Coleophysis harpa</i>
Animalia	Mollusca	Gastropoda	Cephalaspide	Acteocinidae	<i>Acteocina</i>		<i>inculta</i>	(Gould, 1855)		<i>Acteocina inculta</i>
Animalia	Mollusca	Gastropoda	Cephalaspide	Acteocinidae	<i>Tornastra</i>		<i>infrequens</i>	(Adams, 1852)		<i>Acteocina anomala</i>
Animalia	Mollusca	Gastropoda	Cephalaspide	Acteocinidae	<i>Acteocina</i>		<i>oldroydi</i>	Dall, 1925	<i>Acteocina old</i>	<i>Acteocina oldroydi</i>

Lesson learned

- Serving data is a leaky pipeline. Possible leaks:
 - Maintenance of institutional hardware/software
 - Specify attachment server
 - Paleontological data is difficult for aggregators to display accurately
 - How to search for TCN data once served (dwc:datasetID?)

Acknowledgements



- PIs, students, staff and volunteers of EPICC
- iDigBio staff and trainings
- NSF DBI awards
1502500, 1503065,
1503545, 1503611,
1503613, 1503628
and 1503678

