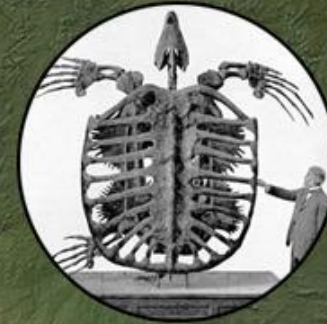


The Cretaceous World -TCN





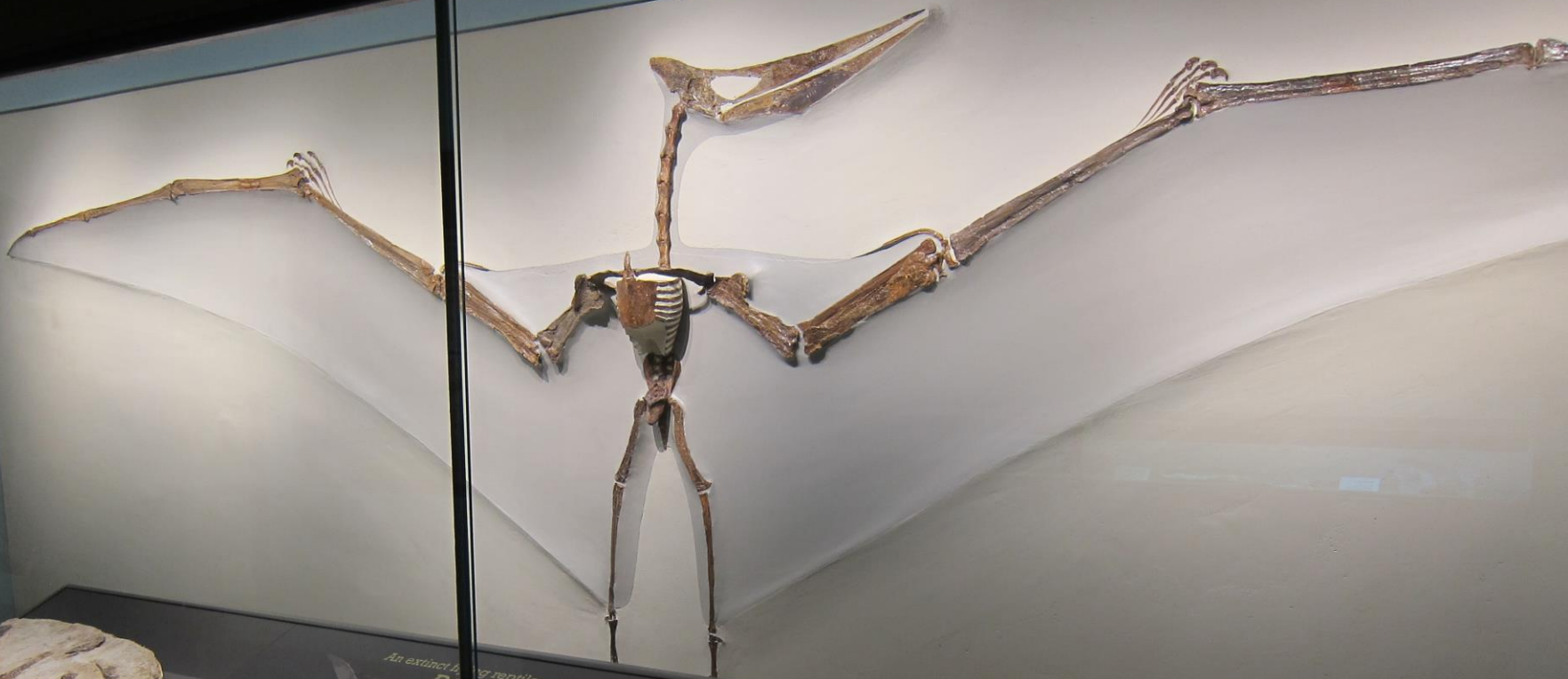
Western Interior Seaway

*Late Santonian (Desmoscaphites
bassleri) -- 84.0 Ma*
© Colorado Plateau Geosystems

MOSASAUR

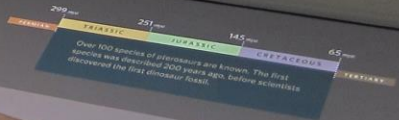


Xiphactinus audax
Sternberg Museum of Natural History



An extinct flying reptile:
Pteranodon

Pteranodon (puh-RAN-uh-don) belongs to an extinct group of reptiles called pterosaurs. They were the first vertebrates to evolve powered flight.



Skull
The skull of a Pteranodon was made of bone and was covered in scales. It was very large and heavy, and it had a long, pointed beak.

Skull and beak
Pteranodon skull and beak. Mould made by Ralph Holt, 1830. USNM, Smithsonian Institution, Washington, DC, USA.



Skull
Pteranodon skull and beak. Mould made by Ralph Holt, 1830. USNM, Smithsonian Institution, Washington, DC, USA.

COLLECTION HISTORY
Pteranodon was first discovered near Fort Victoria in England. It was named by a local party in 1830.





Cretaceous World – TCN : Participants and Institutions

University of Kansas – Bruce S. Lieberman,
Chris Beard & Jim Beach

Paleontological Research Institution – Jonathan
Hendricks

American Museum of Natural History – Neil
Landman & Ruth O’Leary

University of Texas– Ann Molineux, Rowan
Martindale & Matt Brown

Cretaceous World – TCN : Participants and Institutions, cont.

Yale University Peabody Museum of Natural History – Susan Butts & Chris Norris

University of Colorado – Talia Karim

South Dakota School of Mines & Technology –
Laurie Anderson & Maribeth Price

University of New Mexico – Corinne Myers

Sternberg Museum / Fort Hays State University –
Laura Wilson

Cretaceous World – TCN : Data and Research Goals

- ~ 165,000 specimens databased
- ~ 7,000 fossil localities georeferenced
- ~1,600 fossil species imaged (> 3,200 images)

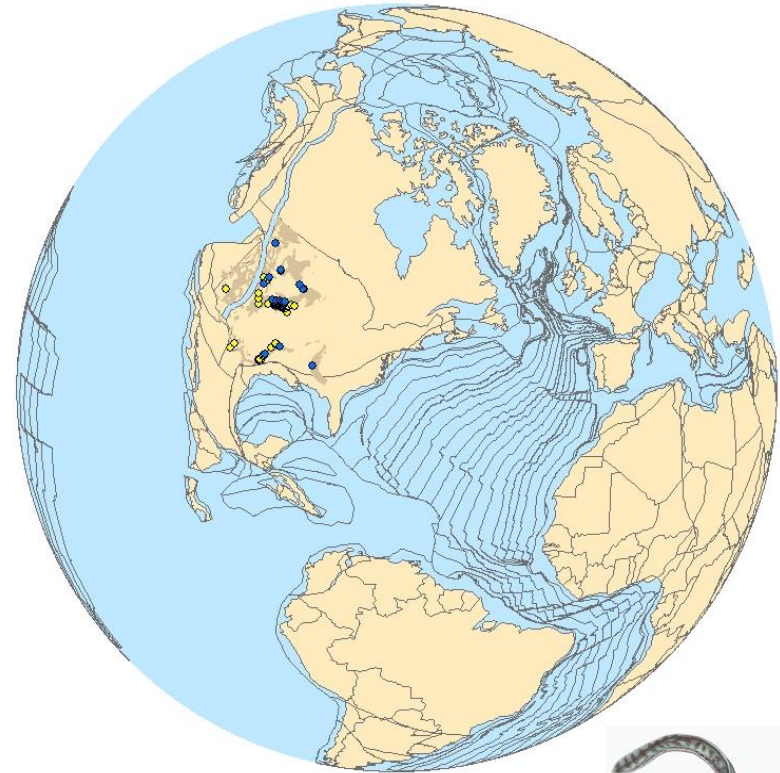
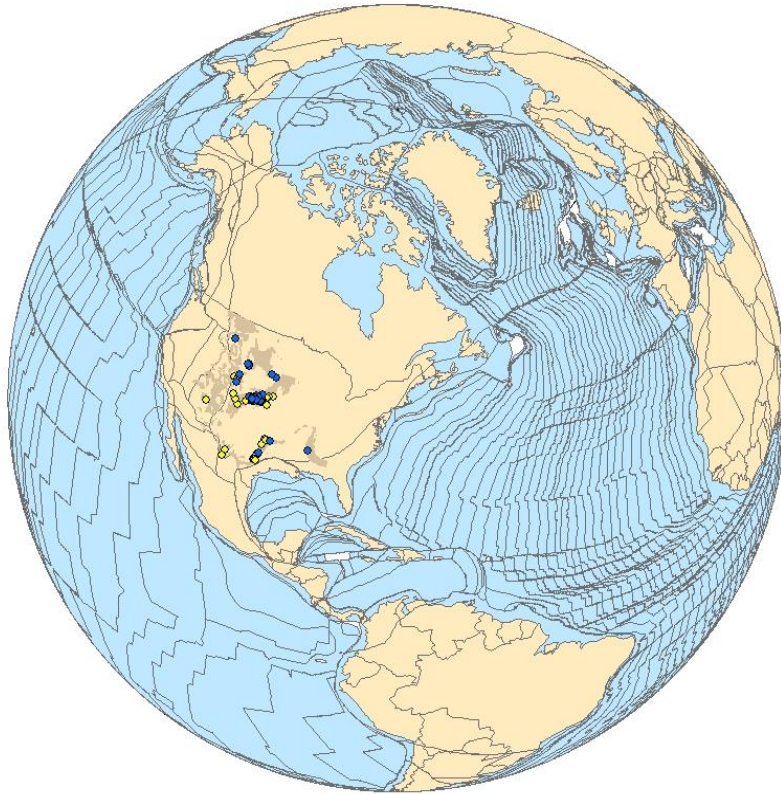
All data shared via iDigBio, institutional websites, and iDigPaleo

Cretaceous World – TCN : Data and Research Goals, cont.

Focus on ecological niche modeling

Present Day

~87Ma



◆ *Cretoxyrhina mantelli*

◆ *Tylosaurus*



Cretaceous World – TCN : Outreach Goals

Creation of *Cretaceous Atlas*



Cretaceous Atlas of Ancient Life Western Interior Seaway



Atlas

All Species

Geology

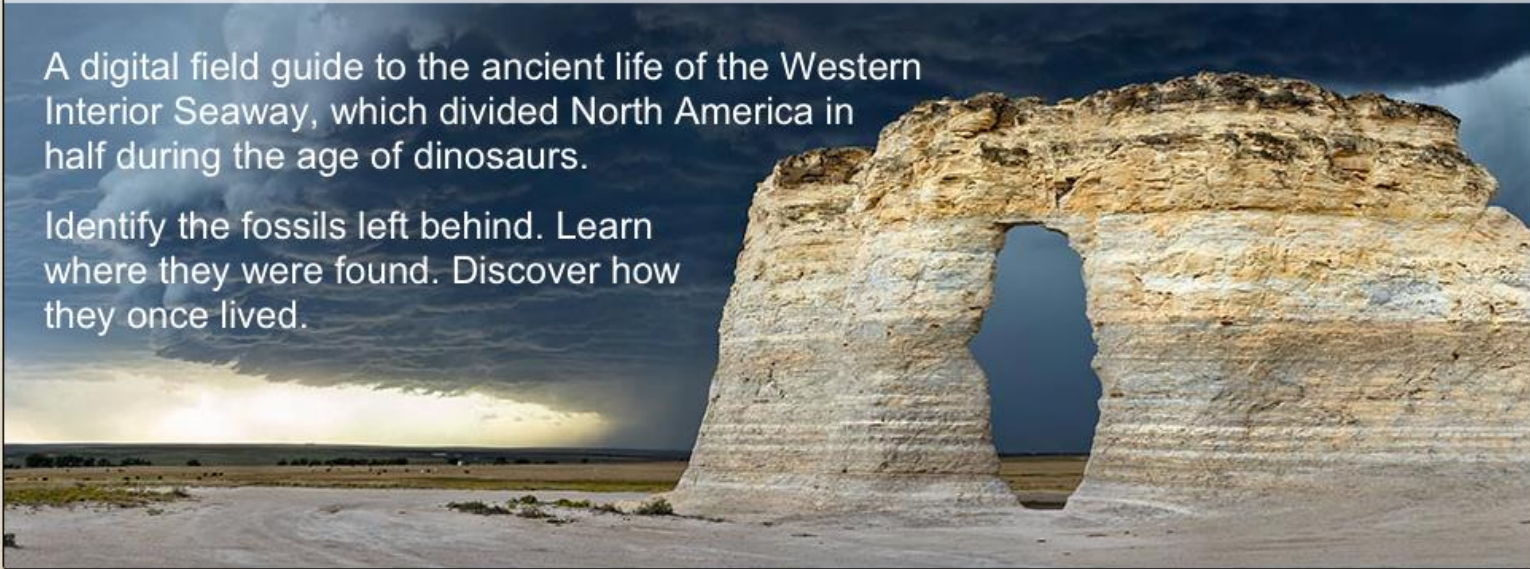
Google™ Custom Search



Welcome to the Cretaceous Atlas!

A digital field guide to the ancient life of the Western Interior Seaway, which divided North America in half during the age of dinosaurs.

Identify the fossils left behind. Learn where they were found. Discover how they once lived.



Cretaceous World – TCN : Outreach Goals, cont.

Creation of *Digital Encyclopedia of Ancient Life*

Additions to *Digital Atlas App*

Museum exhibits

Creating collections for K-12 classrooms

Outreach to K-12 students

Undergraduate and graduate student training

Thanks to:

Jonathan Hendricks (PRI)

Julien Kimmig, Chris Beard, Jim
Beach & Andy Bentley (KU)

Susan Butts (Yale U.)

Cori Myers (U. of New Mexico)

iDigBio



Funding

NSF Advancing the Digitization of Biological Collections