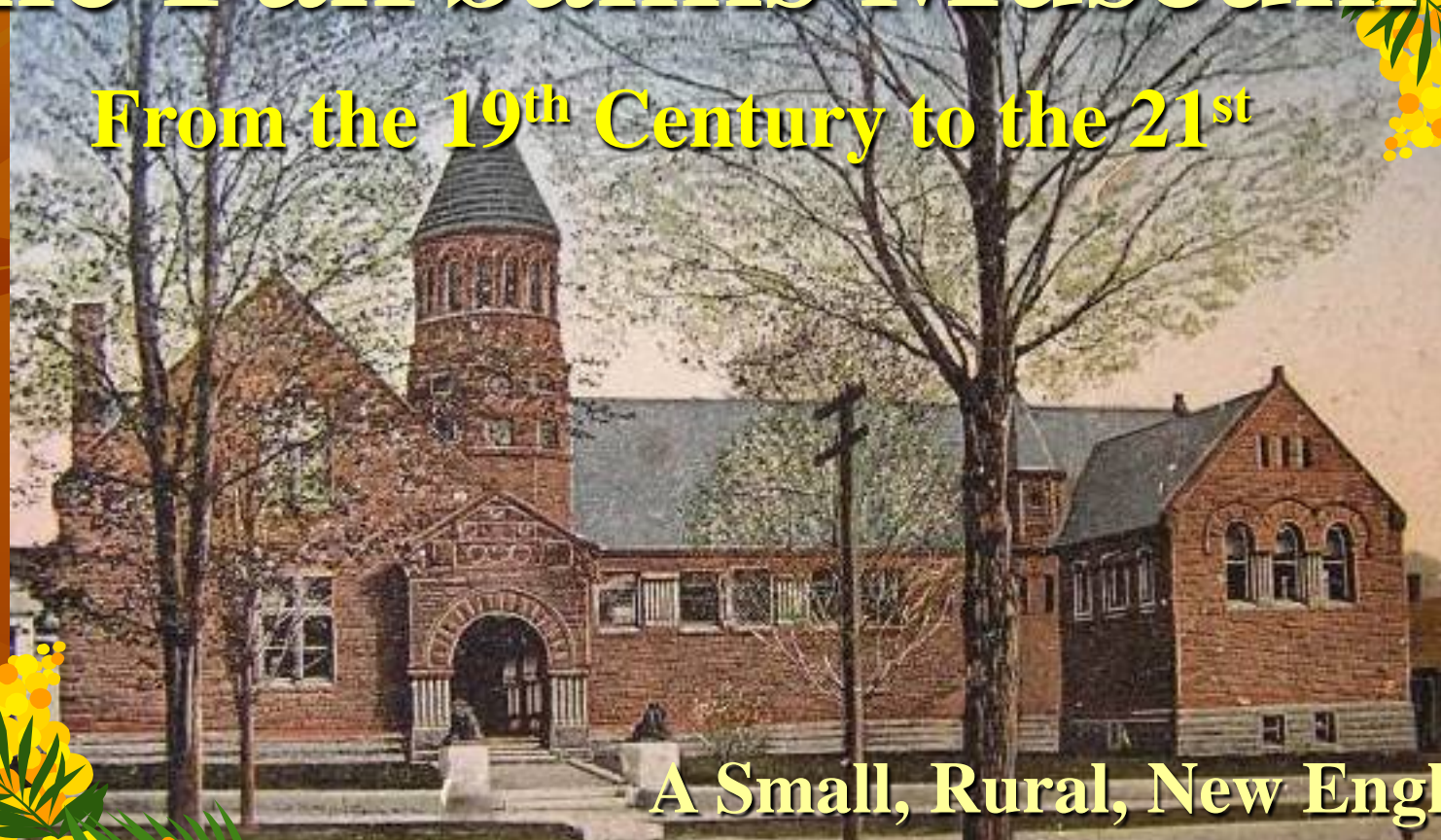


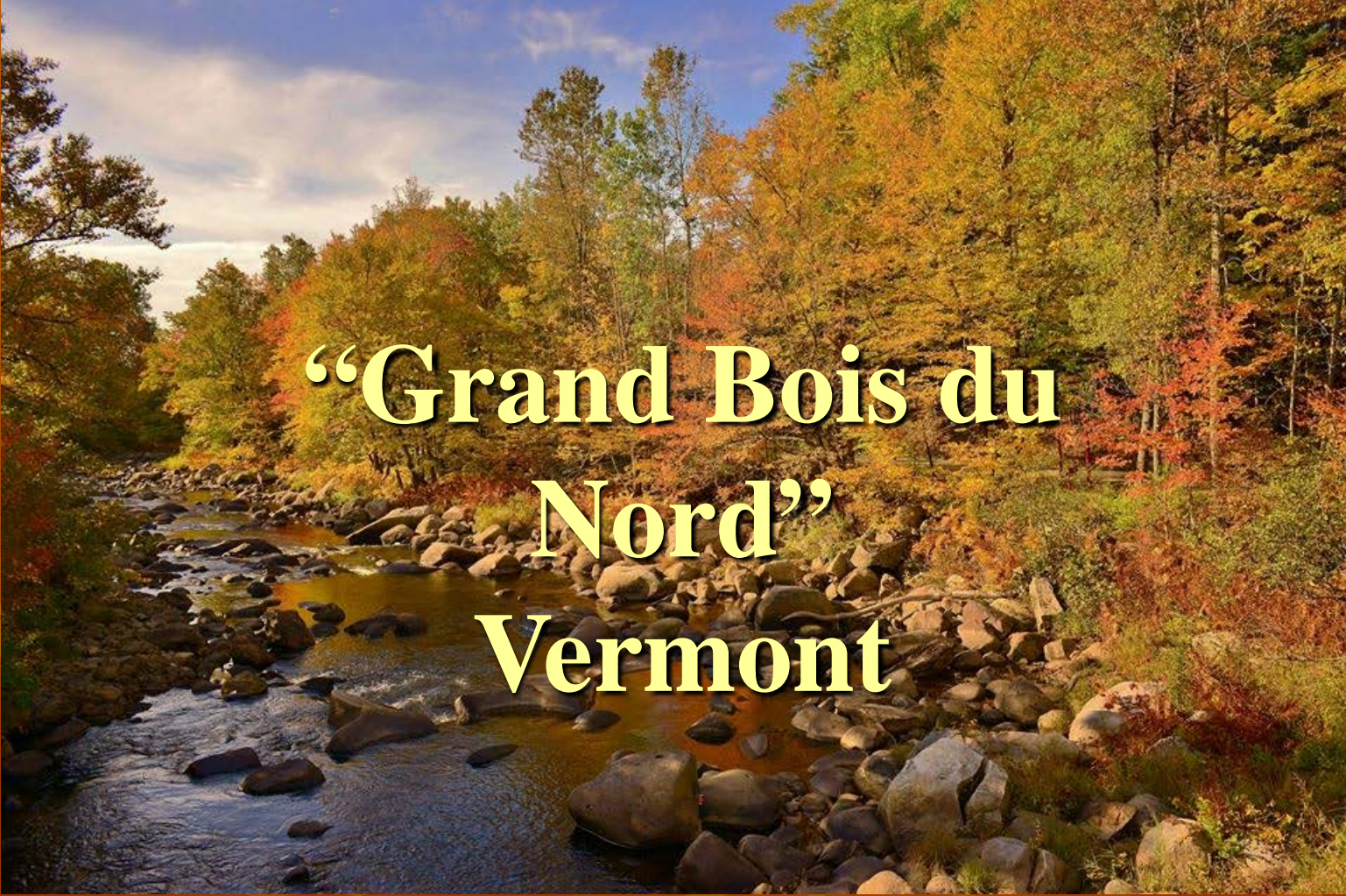
# The Fairbanks Museum

From the 19<sup>th</sup> Century to the 21<sup>st</sup>



A Small, Rural, New England  
Natural History Museum's  
Challenge to Adapt

# The Northeast Kingdom

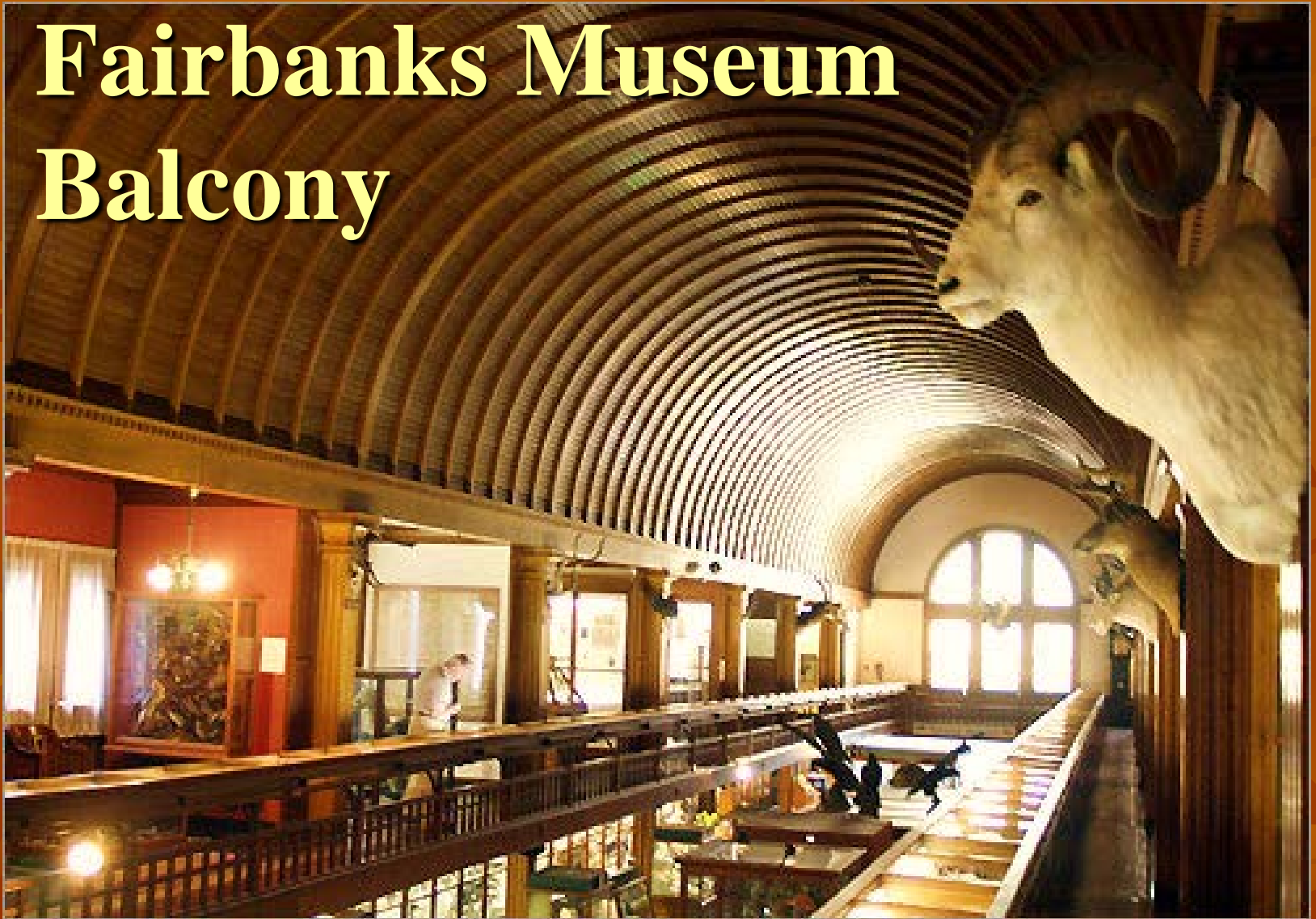


**“Grand Bois du  
Nord”  
Vermont**

# The Cabinet



# Fairbanks Museum Balcony



**Cultural Objects**



**Natural History**



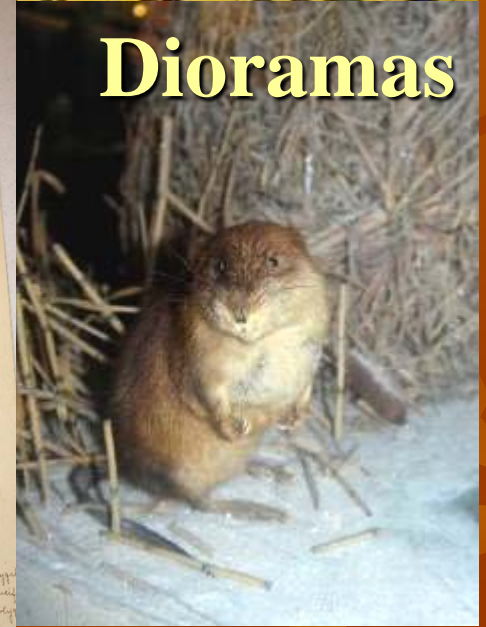
**Specimens**



**Historical Artifacts**



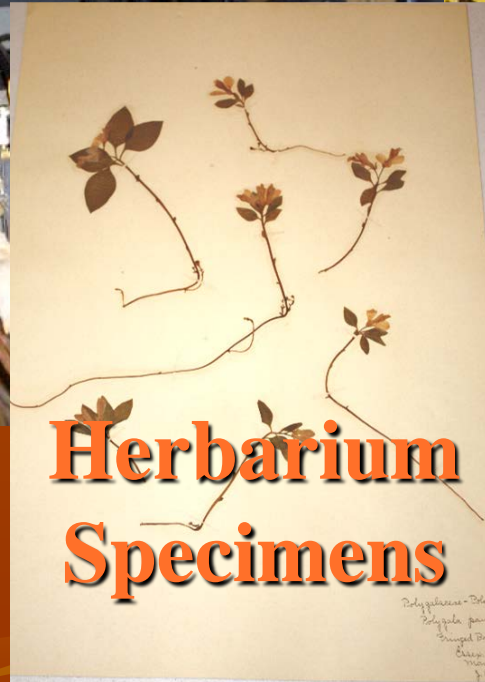
**Dioramas**



**Rocks & Minerals**



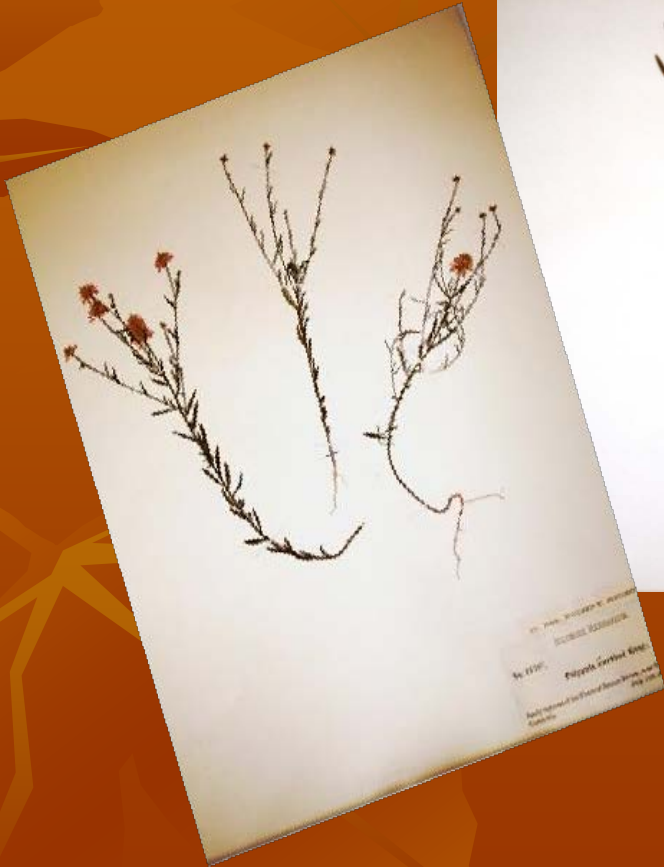
**Herbarium Specimens**



# Collections Housing



# Herbarium of Vermont Flora



# Living Flower Table



06/16/2014



# Bird Study Skins

01/14/2009



01/14/2009



Rufous-tailed Jacamar  
(*Galbula ruficauda*)

# Victorian Bird Trees



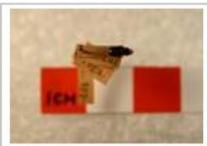


# Philippine Insect Collection

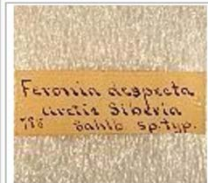
# Arctic Coleoptera



Fdespecta-2.JPG



Fthulensis-1.JPG

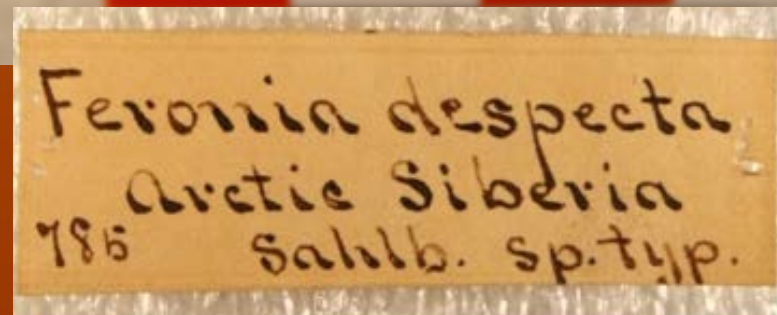


FdespectaLable.JPG



FthulensisLable.JPG

Arctic Syntype Specimens





# Riker Mounted Lepidoptera

# Light Box & Adjustable Camera Stand



## Canon EOS Digital Rebel



## HP Photosmart

# PastPerfect Database

The screenshot displays the PastPerfect database interface. The main window is titled "Objects Catalog" and shows a record for a specimen. The specimen details include:

- Collection: W.E. Balch Collection
- Object ID: Z00369
- Other#: 495
- Old#: [blank]
- Accession: [blank]
- Source: W.E. Balch, Lunenburg, VT
- Credit Line: 1891
- Home Location: Fairbanks Museum Main Bldg, NH Cabinet 5, Shelf 1
- Description: "Cowbird"
- Dimensions: Height 4.000, Width 3.500, Length 16.000, Depth 0.000, Diam. 0.000, Circum. 0.000, Weight 0.000, Count [blank]
- Obtainer: [blank]
- Identified by: JT
- Preparator: W.E. Balch
- Preservation Methods: Mounted on tree branch
- Site / Loc: [blank]
- Habitat: [blank]
- Systemat: [blank]
- Examiner: [blank]

The taxonomic classification is shown in a table below:

Legal	Related	Location	Condition	Appraisal	People, Classification, Subjects, Search Terms	Notes	Cytogen
Kingdom	Animalia (Animals)				Era		
Phylum	Vertebrata (Chordata Sub-Phylum)				Period		
Class	Aves (Birds)				Epoch		
Order	Passeriformes				Stage		
Family	Ictinidae						
Sub-Family							
Genus	Molothrus						
Species	Molothrus ater						
Sub-species	ater						
Sex	Female						
Age							

The interface also includes a toolbar with icons for Prior, Next, Add, Browse, Edit, Spell, End, Query, Delete, Print, and Exit. A search bar is visible at the top right, and a small image of a bird is shown on the right side of the record. The bottom of the screen shows the Windows taskbar with the Start button and several open applications, including Microsoft PowerPoint and PastPerfect. The system clock shows 4:32 PM on 06/19/2009.

06/19/2009

# Fairbanks Collections' Expeditions

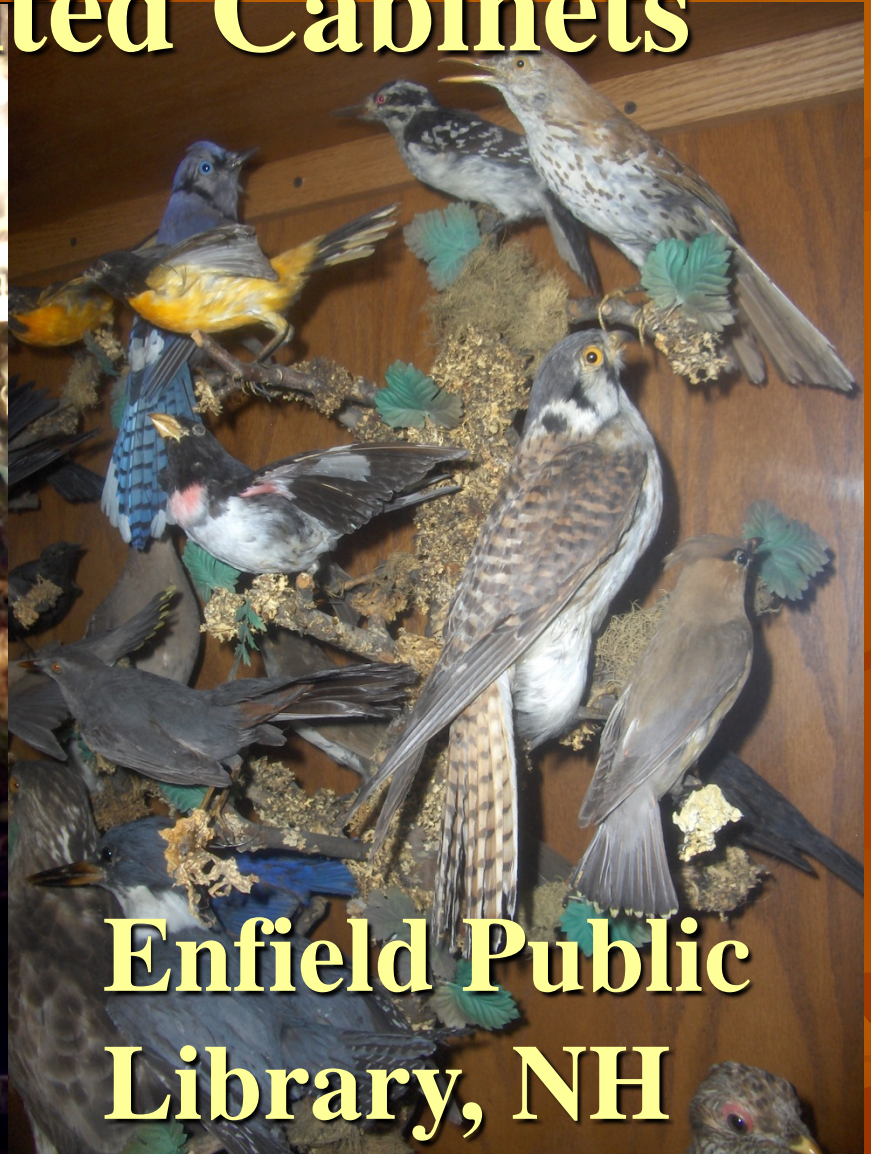




# Undocumented Cabinets



**Greensboro  
Middle-School**



**Enfield Public  
Library, NH**

# Goodrich Memorial Library



# Hitchcock Memorial Library

&

# Natural History Museum



# Collections Staff & Volunteers



# 3D Printing Collection Objects



Naturalist Corner



Our Future?