

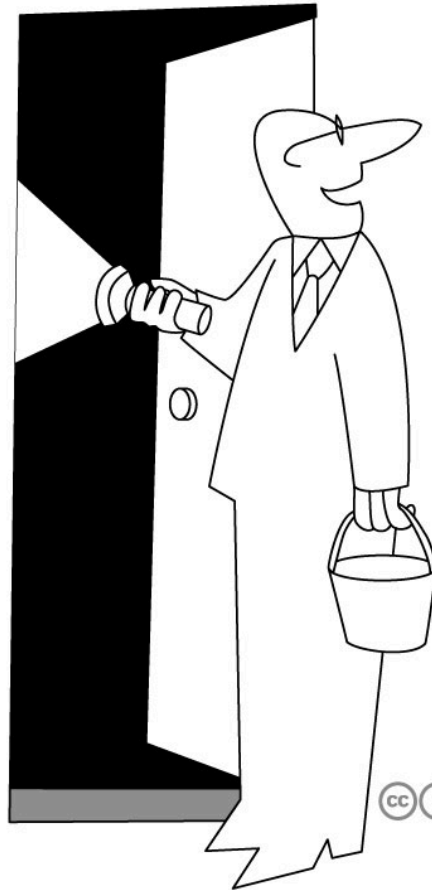
Digitization: Just do it!

Ashley B. Morris¹ and Emily Gillespie²

¹Department of Biology, Middle Tennessee State University, Murfreesboro, TN

²Department of Biology, Marshall University, Huntington, WV

Importance of digitization efforts



“I’m just going to check if we have any dark data in the cellar...”

Importance of digitization efforts

- Facilitates sharing of millions of records around the world
- Promotes integration of multiple types of data in interdisciplinary research
- Promotes growth in taxonomic revision through collaborative efforts and citizen science



Symbiota
Promoting Bio-Collaboration

Main Menu

- Symbiota Home**
 - Overview
 - Active Data Portals
 - Join Existing Portal
 - Establish New Portal
 - Support
 - Help Pages
 - Contact Us
- Specimen Search**
 - Overview
 - Data Interoperability
 - Rare Species Protection
- Floristic Research**
 - Research Species Lists
 - Dynamic Species Lists
- Identification Keys**
 - Overview
- Image Library**
- Data Management**
 - Specimen Records
 - Checklist Editor
 - Voucher Editor
 - Morphological Characters
 - Mass Updater
- News / Events**
 - Meetings / Presentations
 - Symbiota Workshops

Active Symbiota Projects

The following biodiversity projects use the Symbiota Virtual Biota software package to establish biodiversity portals with specific regional and/or taxonomic scopes. Each portal represents the community of collaborating researchers that manage the core scientific data. If you are interested in becoming a data contributor for an already established data portal, contact the portal administrator for more information on gaining access to their data editing tools. For more information on what is involved in being a data provider, read the [Specimen Integration](#) page.

Quick Index

- [SEINet](#)
- [Intermountain Regional Herbarium Network \(IRHN\)](#)
- [Consortium of North American Bryophyte Herbaria \(CNABH\)](#)
- [Consortium of North American Lichen Herbaria \(CNALH\)](#)
- [Mycology Collections Data Portal \(MycPortal\)](#)
- [Consortium of Northeastern Herbaria Portal \(CNEH\)](#)
- [Madrean Archipelago Biodiversity Assessment Project \(MABA\)](#)
- [Cooperative Taxonomic Resource for American Myrtaceae \(CoTRAM\)](#)
- [Herbario Virtual Austral Americana \(HVAA\)](#)

SEINet - Southwest Environmental Information Network

SEINet is a virtual flora that covers the southwestern region of North America with a particular interest in the desert regions.

- <http://swbiodiversity.org/seinet/index.php>
- [Active Projects](#)
- [Data Providers](#)
- Data digitization funding
 - Completion and Coordination of Databases of Arizona Vascular Plants at ASU, ARIZ, and ASC [BRC-0237418](#)
 - [California Desert Invertebrate Survey \(SEINet\) at UC](#) [BRC-0237418](#)

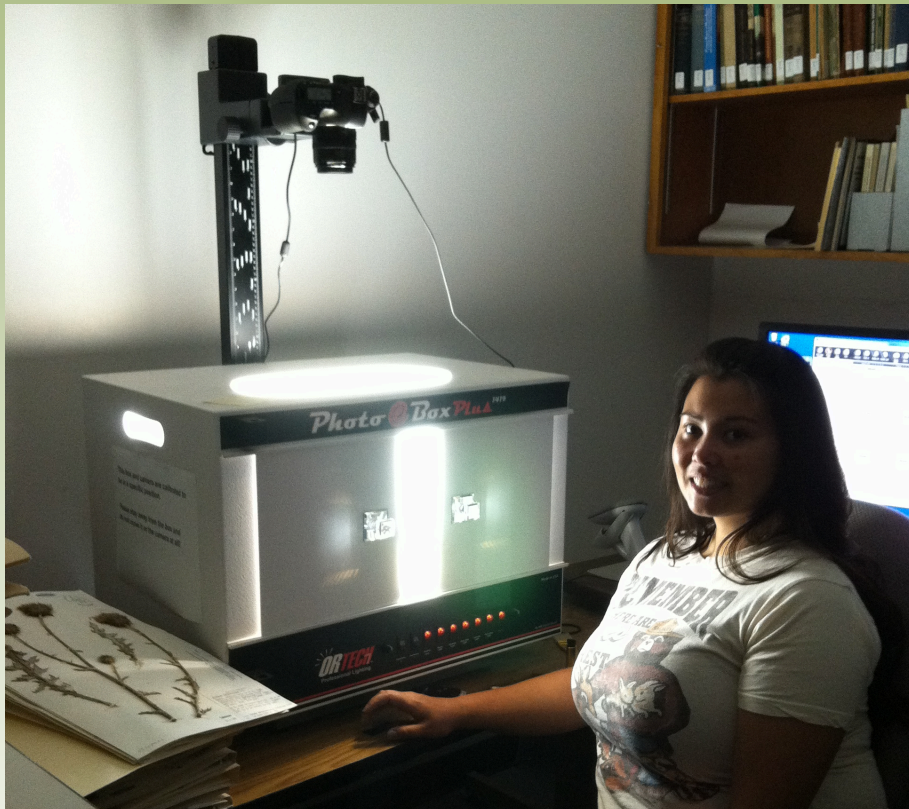
Login

Log in as: _____

User:

Password:

Biggest perceived challenges to getting started



Equipment and (wo)man power



Time / money

Biggest perceived challenges to getting started



Good old fashioned fear

No equipment? No money? No problem!

- Start by databasing – requires only a computer and excel
- Integrate databasing into your coursework as student projects
- Recruit retirees / volunteers to database
- Consider innovative educational programs in your area....



Sarah Lamb and her inmate students at Utah's Daggett County Jail: an innovative collaboration with USU's Intermountain Herbarium

Options for getting imaging equipment

- Beg your Chair/Dean for money..... (Many of us have!)
- Talk to your library's digitization department
- Contact larger herbaria in your region for a loaner
- Shipping your specimens to a 'hub' is also an option



Example of scanning / imaging stations targeted at libraries that may be useful for herbarium specimens

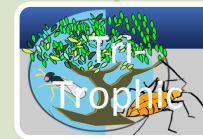
Within the ADBC program...



Home Uniting
Biocollection
(HUB)



Thematic
Collections
Networks (TCNs)



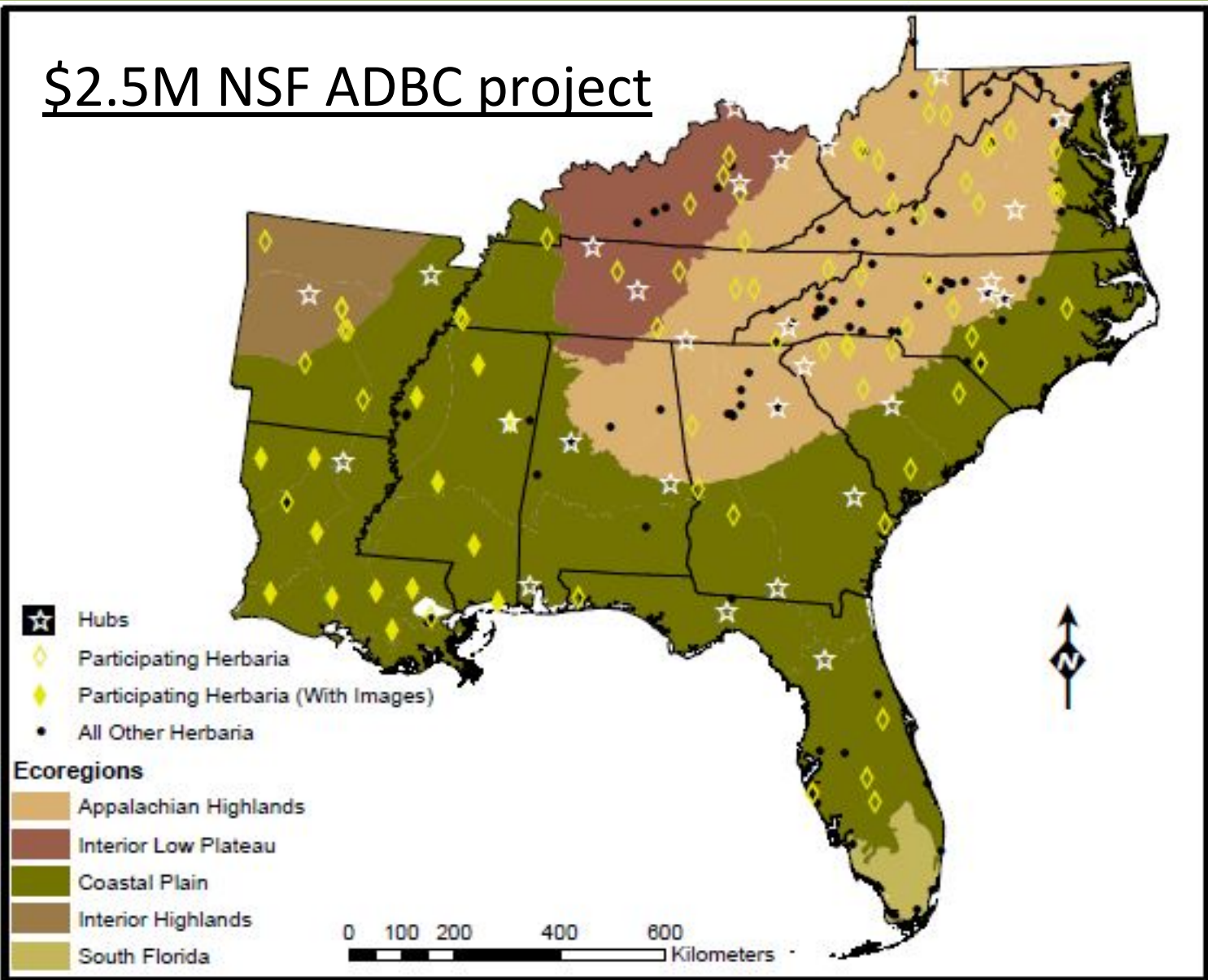
Partners to
Existing Networks
(PENs)



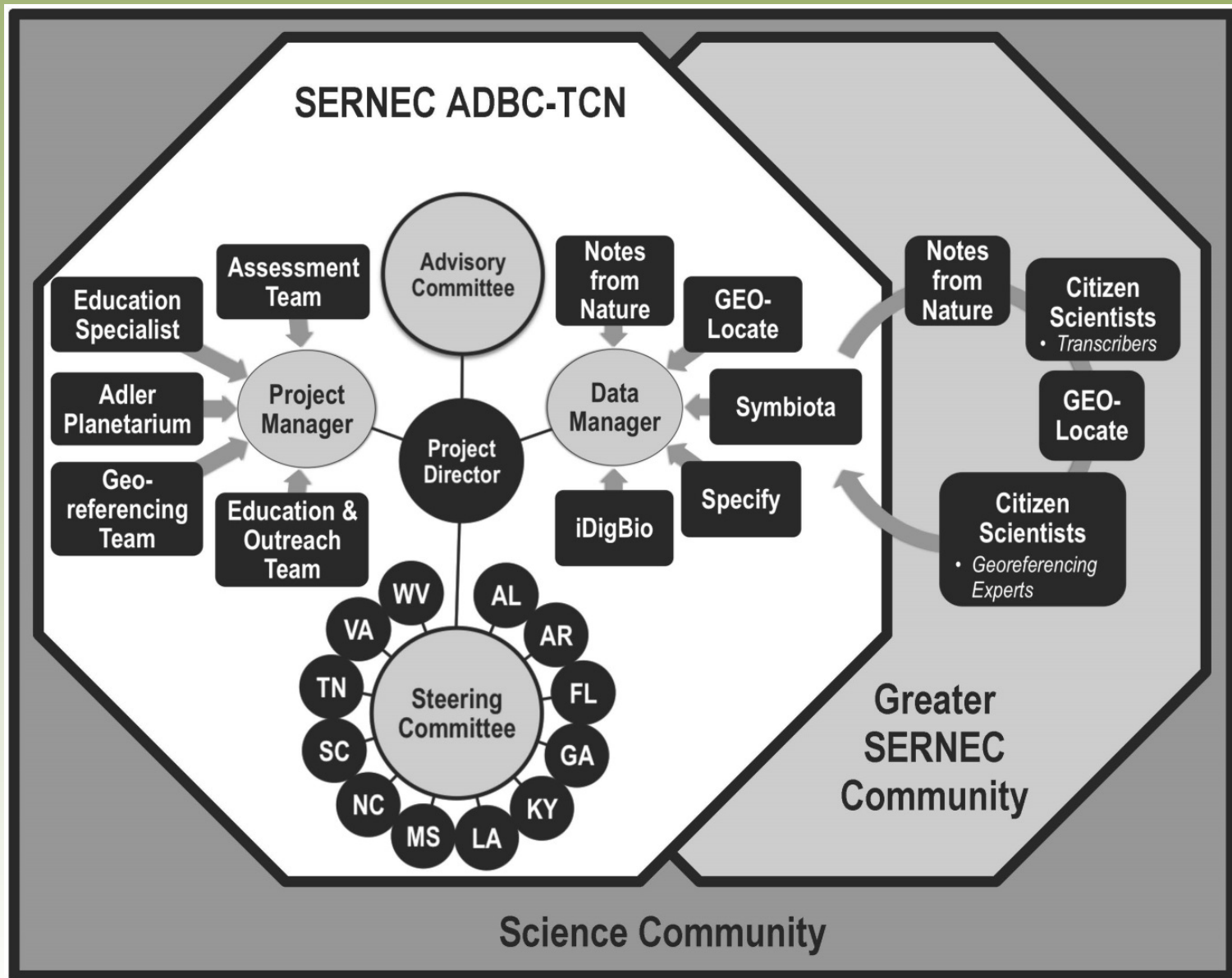
10 current TCNs / 3 pending TCNs (incl. SERNEC)

SERNEC: Key to the Cabinets

\$2.5M NSF ADBC project



TCN: it takes a village



The MTSU approach

- 20-25,000 vascular plant specimens
- Single curator (ABM); no staff / no release time
- No dedicated budget (some funds from teaching labs)



The MTSU approach

- ✓ Go to iDigBio workshops - Make friends with Gil Nelson 😊
- ✓ Requested a laptop from Department for digitization
- ✓ Requested all new cabinets for new science building
- ✓ Applied for funding from MTSU Foundation 3 times (third time is the charm)
- ✓ Recruited two work study students to database collection
- ✓ Collaborated on NSF proposals (CSBR / ADBC) and ADBC funding is pending
- ✓ Writing a feature on our collection for the Society of Herbarium Curators newsletter The Vasculum

The Marshall approach

- 50,000 vascular plant specimens
- Single curator (EG); no staff
- No secure budget (~\$300 last year from CoS)
- ✓ Heavily reliant on collaborative efforts
- ✓ Large Federal Work Study Program
 - ✓ Five FWS students in 2013-2014

