

Research & Exhibition Museum
with associated Graduate School



Curator-in-Charge
Mark Siddall
(annelid specialist)



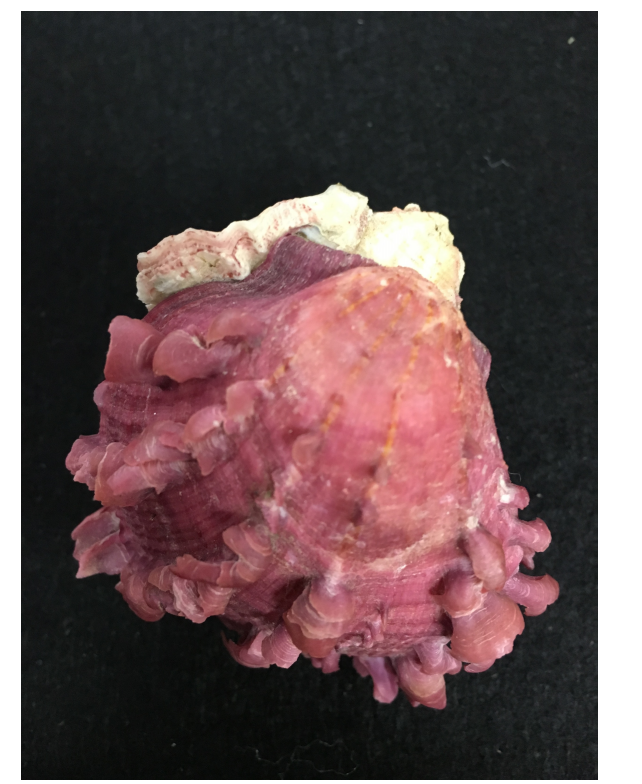
Scientific Assistant
Lily Berniker
(33% time effort)



Curatorial Associate
Christine Johnson
(10% time effort)

Volunteers:

Ann Davis, data clean-up
Chantal Wright, data clean-up
Sofia Schembari, processing Duprey Collection



People

Collection Storage Space
(~330K lots; ~3.5 million specimens)

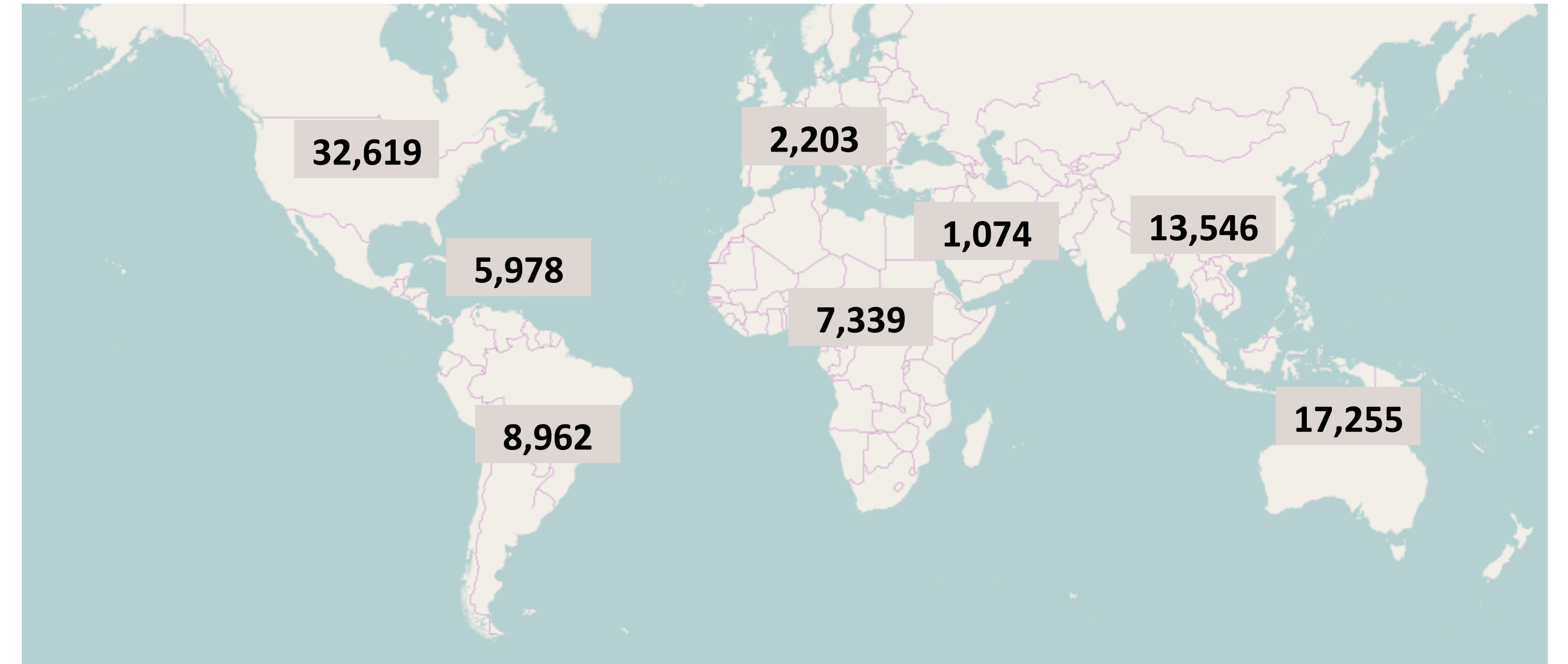


Dry Storage (halls)



Wet Storage (wet storage bldg)

Geographic Breadth Based on Number of Pooled Catalogued Records



Main Collections/
Surveys / Expeditions
(‘databased’)

Alan F. Brown Collection	1525
Alice Denison Barlow Collection	3202
AMNH St. Catherines Island Survey	809
AMNH-CBC Bahamas Survey 2000	527
Betty Jean Peach Collection	2554
Cora Staples Collection	1116
Donald R. Shasky Collection	1596
Dorothy Germer Collection	2293
Dr. Edward A. Dunlap Collection	3142
Easter Island Collection	696
Elaine S. Phillips Collection	521
Germer Collection	3603
Glenn Goodfriend Collection	1311
Grace G. Eddison M.D. Collection	11029
Hedwig Kemper Collection	686
Helen DuShane Collection	6622
Jerome M. Bijur Collection	2888
John H. Bernard Gift	664
Johnnie Johnson Collection	1095
Katherine C. Vaught Collection	4270
Kevin Lamprell	2067
Marta J. de Maintenon Collection	508
Melvin B. Robin Collection	970
Miriam K. Hicks Collection	754
Mrs. Peter R. Fleischner Collection	4168
Raeihle Collection	2045
Stanley Sokoloff Collection	641
Vema Expedition	701
Von Kriegelstein Collection	3651
Walter E. Sage Collection	1168
Walter E. Sage III Collection	516
Waverley H. Harmon Collection	1833
William S. Teator Collection	1284

Habitat Type

Bay	8586
Beach	7375
Creek	1138
Deep water/dredge	2039
Dive/diver Collected	566
Fishnet/Fisherman	565
Intertidal	1073
Lagoon	865
Land or Unknown	270907
Line	1165
Mud/Sand	3348
Offshore	1545
Pond/pool	2137
Reef	2761
River	3096
Sand	4327
Shore/shorline	1908
Tide	5544
Trawl Collected	895
Fathoms: 1-100	4710
Fathoms: 100-1000	518
Fathoms: 1000-3000	14
Feet: 1-100	516
Feet: 100-1000	1983
Meters: 1-100	8739
Meters: 100-1000	3012
Meters: 1000-2000	788
Meters: 2000-7000	996

Type Specimens



Chelia equestris striata



Bulimus maragdinus



Helix regiane



Chione minor

Taxon Level	N
Families	490
Genera	2848
Species	8727

Collection Date	No. of Records
< 1850	115
1850-1949	2,569
1950-present	47,902
No date	941

Type of Type	No.
Holotype	411
Lectotype	17
Neotype	2
Paralectotype(s)	97
Paratype(s)	1775
Syntype(s)	401
Topotype(s)	11

Relatively Newly Acquired
Collections (not databased)

Constance K. Dupree	5064
Rosen Collection	4655



Retrieving the Rosen Collection



Processing the Dupree Collection



Cuban snails from Dupree Collection

Dry & Wet Storage Organization

- pretty standard
- most all catalogued, ~92K in digital form
- outdated taxonomy!!
- higher taxon level info ‘missing’ from database
- starting to use Unique Specimen Identifier barcodes



The AMNH mollusk collection is large, with much of the collection being acquired through donations or expeditions from 1950 to present, although collections date back to the mid-1800s. The collection has been without a curator since 2005. The geographic breadth is world-wide, but the collection is best represented from North America. We have 92K records in a FileMaker Pro database, although more specimen records reside in hand-written catalogs. The data entry is not optimal, and with volunteer effort, we are actively cleaning up and standardizing the data to make the data useful and to be able to migrate the data and images into the new division-wide database EMu. Strength of the collection is marine, but we have notable collections of land species from Cuba and the Lang & Chapin expedition to Africa. We are currently processing the donation from C. Dupree and have just acquired a collection from S. Rosen. Our current biggest effort is getting the data cleaned and migrated.