



# AntWeb: Building the online Global Ant Museum

Moving taxonomic knowledge out of the hands of select Northern Hemisphere museums into the hands of a new generation of global ant researchers

Brian Fisher, California Academy of Sciences







Alex Wild



Alex Wild





**Audubon Birds**

\$14.99

App Store



**iBird Explorer Pro**

\$29.99

App Store



**National Geographic's Handheld Birds**

\$9.99

App Store



**Peterson Birds of North America**

\$29.99

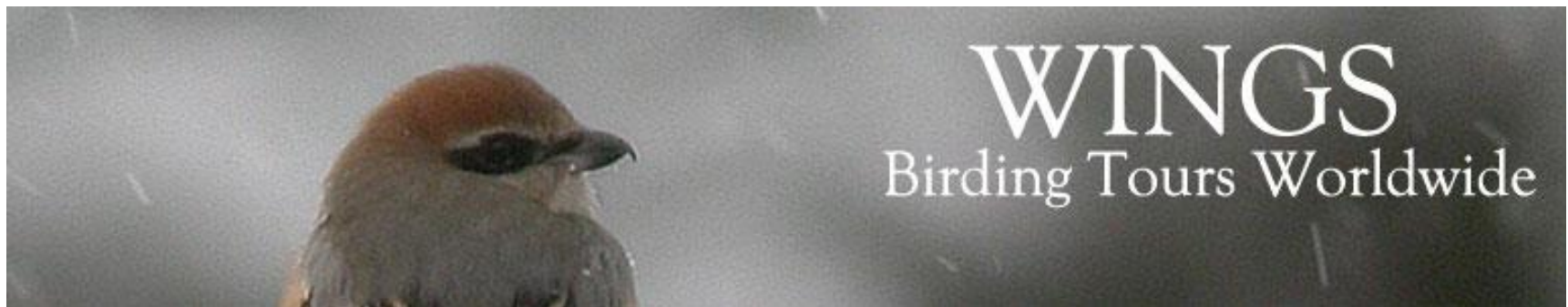
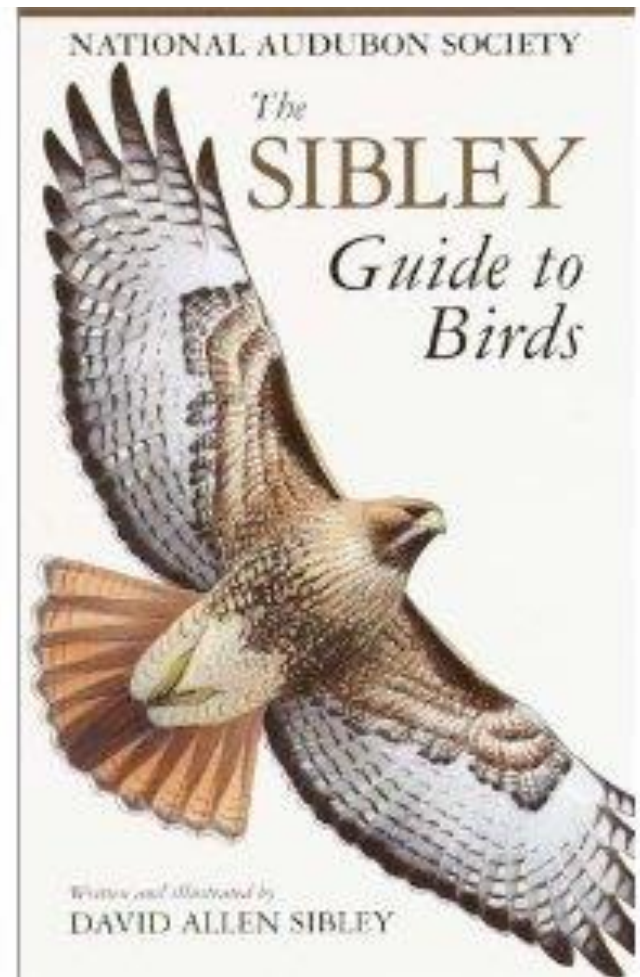
App Store

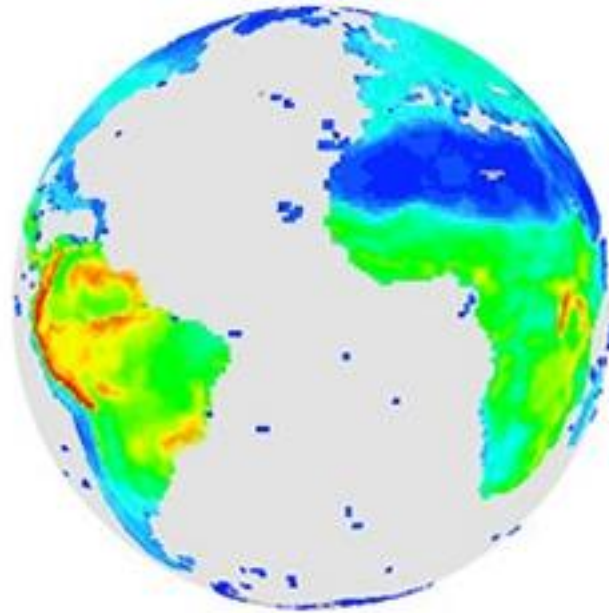


**The Sibley eGuide to the Birds of North America**

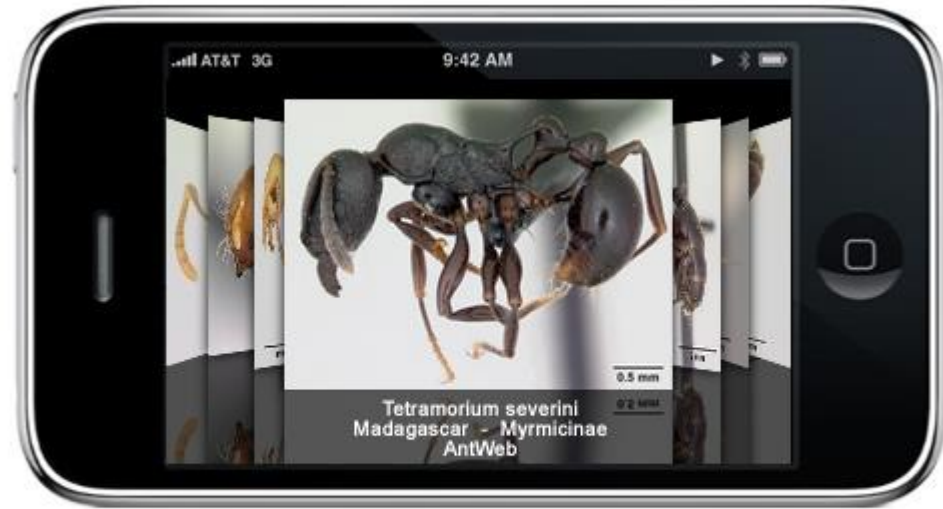
\$29.99

App Store



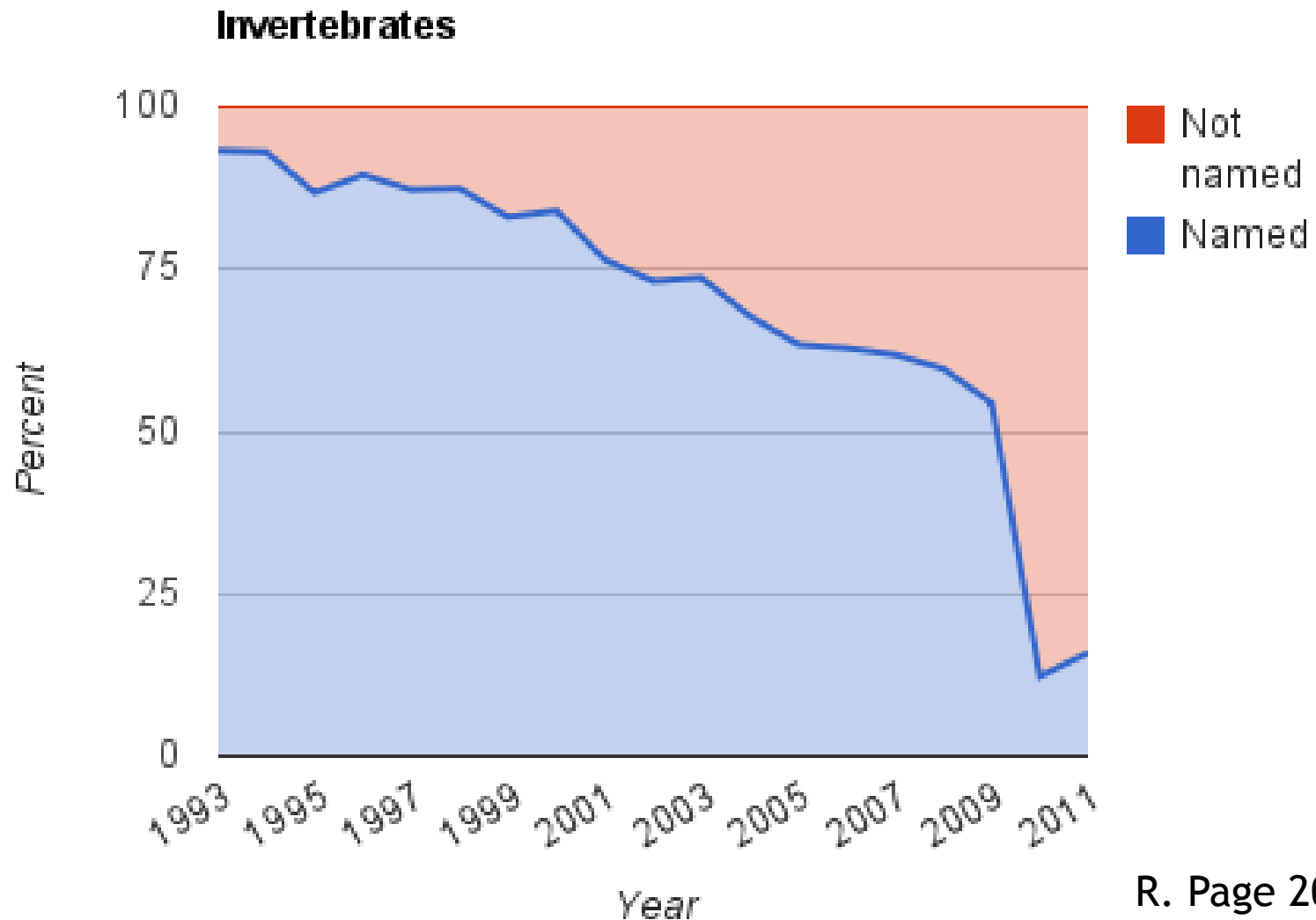


# Global Bird Diversity

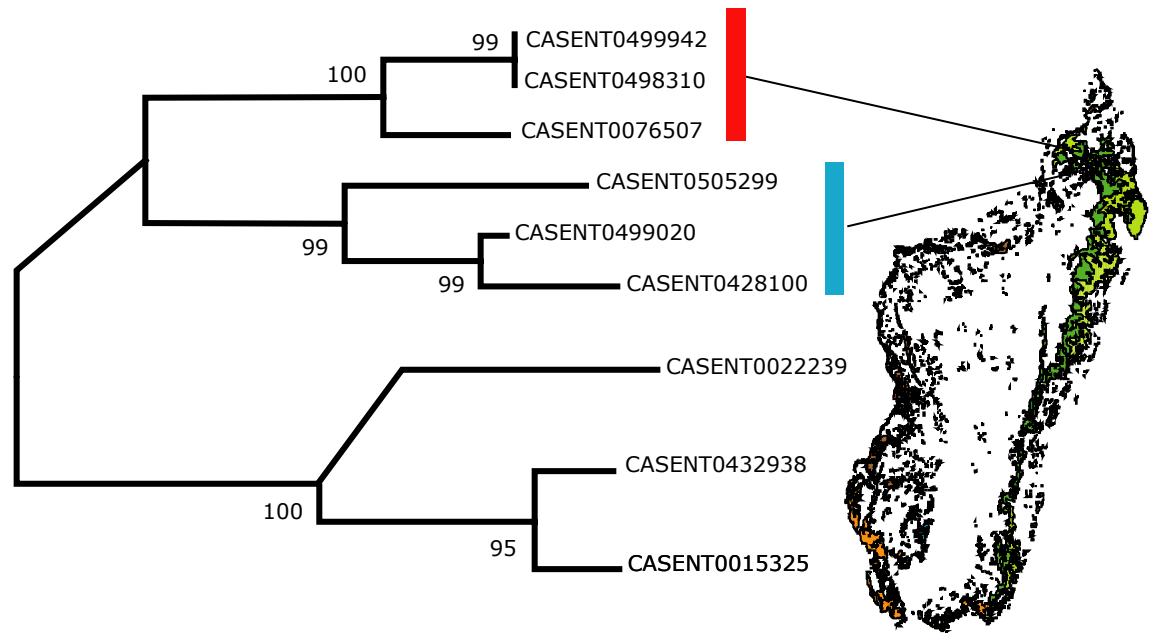
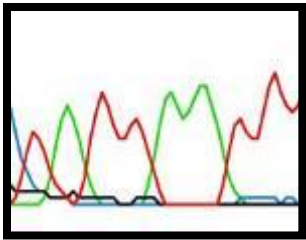




# tidal wave of unnamed taxa



# biodiversity is now indexed via DNA sequences and GPS coordinates



HISTOIRE  
PHYSIQUE, NATURELLE ET POLITIQUE  
DE  
**MADAGASCAR**

PUBLIÉE  
PAR ALFRED GRANDIDIER.

---

VOLUME XX.  
HISTOIRE NATURELLE DES HYMÉNOPTÈRES.

---

DEUXIÈME PARTIE :  
LES FORMICIDES,  
PAR A. FOREL,  
PROFESSEUR À L'UNIVERSITÉ DE ZURICH.



PARIS.

IMPRIMÉ, PAR AUTORISATION DE M. LE GARDE DES SCEAUX,  
À L'IMPRIMERIE NATIONALE.

---

M DCCC XCI.





**90% of taxonomic products**

never used





**Museum: warehouse of dead  
creatures**

Not a portal on life

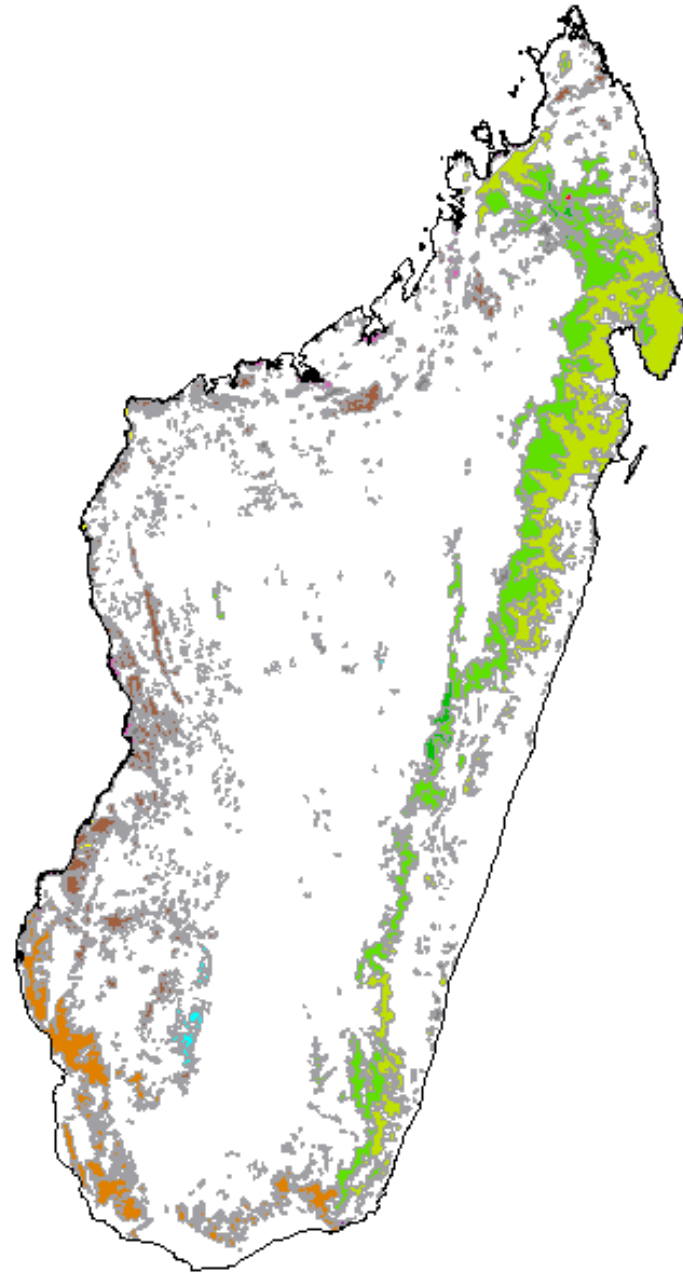






Original Habitats:  
10% remain

Using taxonomic  
data, the  
government will  
triple protected  
habitat in 5  
years



**Lots of undescribed species**

**Fewer taxonomists**



# "suicidal" experiment





# Dow Jones index to the environment

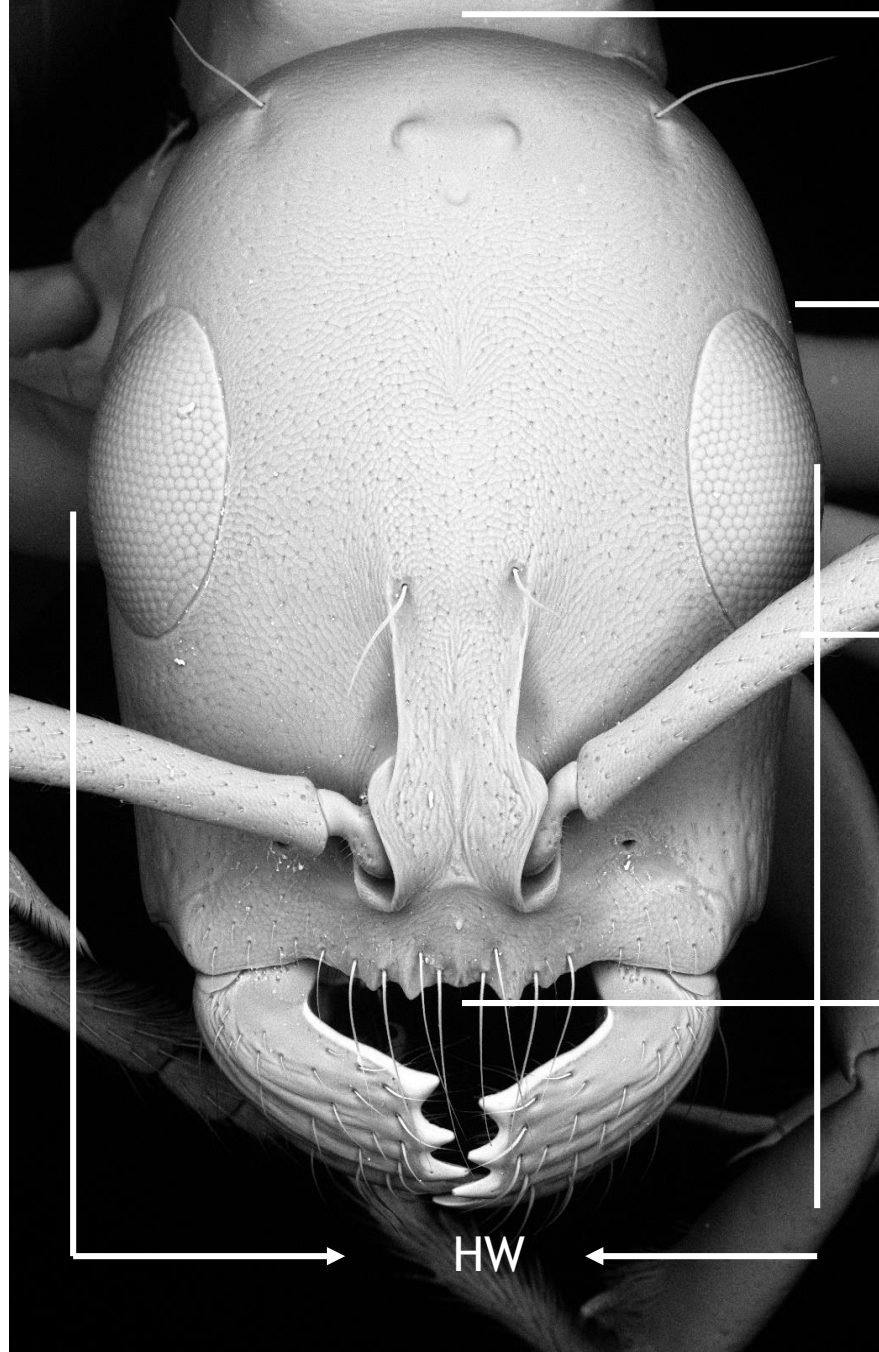
**A DECADE OF THE DOW JONES**







# worker head measurement





Global...

Regions...

Projects...

★ Favorites!

Search for

Go » [Advanced Search](#)

# Ants of the World

AntWeb is the world's largest online database of images, specimen records, and natural history information on ants. It is community driven and open to contribution from anyone with specimen records, natural history comments, or images.

Our mission is to publish for the scientific community high quality images of all the world's ant species. As of March 2013, AntWeb has over 100,000 ant images, of 24,994 specimens representing over 10,549 species. AntWeb provides tools for submitting images, specimen records, annotating species pages, and managing regional species lists. [More...](#)



Acanthognathus

 Head
  Profile
  Dorsal
  Label

[FULLSCREEN SLIDESHOW »](#)

## Become an Urban Ant Collector!

Join a global effort to record data that will help researchers advance our understanding of biodiversity and our planet!

[Click here to learn how!](#)

## Featured Curators



**Phil Ward**  
University of California, Davis



**Lloyd Davis**  
Florida Ant Mafia



**James Trager**  
Missouri Botanical Garden



**Jack Longino**  
University of Utah

## Recent Images

JTLC000007293: [Stenamma megamanni](#)  
 CASENT0622853: [Stenamma megamanni](#)  
 CASENT0622851: [Stenamma megamanni](#)  
 CASENT0606734: [Stenamma megamanni](#)  
 CASENT0606731: [Stenamma megamanni](#)  
 CASENT0621836: [Stenamma megamanni](#)  
 CASENT0603933: [Stenamma megamanni](#)

## Get Involved!

### Enroll in Ant Course

Ant Course is a workshop designed primarily for systematists, ecologists, behaviorists, conservation biologists, and other biologists whose research responsibilities require a greater understanding of ant taxonomy and field research techniques. Emphasis is on the evolution, classification and identification of ant

## Meet the rest of the team!

Many curators already contribute to AntWeb - would you like to join us? Curators can edit the home page of the geographic section they curate, upload specimen data



**Stigmatomma ferrugineum**

*Amblyopone ferruginea* Smith, 1858a: 110 (w.) AUSTRALIA. [AntWEB](#) [AntWiki](#)

André, 1896d: 261 (q.). Combination in *Stigmatomma*: Yoshimura & Fisher, 2012: 19. Senior synonym of *Stigmatomma mandibularis*: Brown, 1952i: 265. See also: Brown, 1960a: 206.

Subfamilies <small>show unavailable show tribes</small>	Genera <small>show subgenera</small>	Species
(no subfamily)	<i>Adetomyrma</i>	<i>agostii</i> <b>ferrugineum</b> <i>orizabanum</i>
Aenictinae	<i>Amblyopone</i>	<i>amblyops</i> <i>fulvidum</i> <i>pallipes</i>
Aenictogitoninae	<i>Amblyopopona</i>	<i>annae</i> <i>gaetulicum</i> <i>papuanum</i>
Agroecomyrmecinae	<i>Amblyopopone</i>	<i>arizonense</i> <i>gheorghieffi</i> <i>paranense</i>
<b>Amblyoponinae</b>	<i>Apomyrma</i>	<i>armigerum</i> <i>gingivale</i> <i>pertinax</i>
Aneuretinae	<i>Arotropus</i>	<i>barretoii</i> <i>glauerti</i> <i>pluto</i>
†Armaniinae	<i>Bannapone</i>	<i>bellii</i> <i>gnoma</i> <i>punctulatum</i>
†Brownimeciinae	† <i>Casaleia</i>	<i>besucheti</i> <i>gracile</i> <i>quadratum</i>
Cerapachyinae	<i>Concoctio</i>	<i>bierigi</i> <i>gracilicornis</i> <i>reclinatum</i>
Dolichoderinae	<i>Ericapelta</i>	<i>binodosus</i> † <i>groehni</i> <i>rothneyi</i>
Dorylinae	<i>Examblyopone</i>	<i>boltoni</i> <i>heraldoi</i> <i>rubiginoum</i>
Ecitoninae	<i>Fulakora</i>	<i>bruni</i> <i>impressifrons</i> <i>sakaii</i>
Ectatomminae	<i>Lithomyrmex</i>	<i>caliginosum</i> <i>juergi</i> <i>santschii</i>
†Formiciinae	<i>Myopopone</i>	<i>celata</i> <i>lucidum</i> <i>saundersi</i>
Formicinae	<i>Mystrium</i>	<i>chilense</i> <i>lurilabes</i> <i>serratum</i>
		<i>cleae</i> <i>luzonicum</i> <i>silvestrii</i>
		<i>crenatum</i> <i>mandibularis</i> <i>smithi</i>

†fossil valid synonym subspecies unidentifiable/excluded unavailable/nomen nudum homonym View full key

# AntWeb content

- 354,261 specimens records
- 11,394 species imaged
- 25,464 specimens imaged
- 107,038 total specimen images





Malagasy: [Madagascar](#) > [Formicidae](#) > [Ponerinae](#) > [Anochetus](#) > [Anochetus madagascarensis](#)

See all *Anochetus madagascarensis* in [All Antweb](#) or [Bolton World Catalog](#)

or in

## Species: *Anochetus madagascarensis*

Name Status:

### Taxonomic Hierarchy:

Subfamily: [Ponerinae](#) Genus: [Anochetus](#)



[Enlarge Map](#)

### TOOLS:

#### View:

- [Browse](#) Specimens for this species (904 examples)
- No Map Specimens within this species (too many - 904)
- [View Anochetus madagascarensis](#) in Google Earth

#### Comparison Tool:

- [Compare images](#) of the Specimens within this species

#### Catalog:

- See [Hymenoptera Name Server](#)

### Download:

#### Specimen Data:

- KML
- Tab-delimited

### Taxonomic History (provided by Barry Bolton, 2013)

*Anochetus africanus* var. *madagascarensis* [Forel, 1887 PDF](#): 382 (w.) MADAGASCAR. [AntCat](#) [AntWiki](#)

#### Taxonomic history

[Fisher & Smith, 2008 PDF](#): 12 (q.m.).

Raised to species and senior synonym of *Anochetus friederichsi*: Brown, 1978c: 557.

### Distribution:

Inner Seychelles: Mahé. Endemic to the Malagasy Subregion. Recorded from the Comoros (Grande Comore, Anjouan) and Madagascar.

### Taxon Page Author History

### Specimen Data Summary

**Found most commonly in these habitats:** 182 times found in rainforest, 81 times found in tropical dry forest, 51 times found in littoral rainforest, 22 times found in gallery forest, 20 times found in spiny forest, 9 times found in littoral forest, 7 times found in Disturbed montane rainforest, 9 times found in lowland forest, 4 times found in coastal scrub, 9 times found in Lowland rainforest, ...

**Collected most commonly using these methods or in the following microhabitats:** 88 times malaise trap, 19 times MW 50 sample transect, 5m, 10 times 9 MaxiWinks, mixed samples, 29 times Malaise, 8 times MW 25 sample transect, 5m, 5 times winkler trap, 7 times GC, 5 times 4 Malaise traps, 4 times pitfall trap, 1 times 7 MaxiWinks, 5 times pitfall trap, PF 50 traps, 11 cm dbh with water, soap, formalin, nonlinear placement, ...

**Elevations:** collected from 1 - 1550 meters, 274 meters average

**33 Specimens Imaged | [View All 904 Specimens for this species](#)**



Global...

Regions...

Projects...

★ Favorites!

Search for

Go

Advanced Search

Malagasy: [Madagascar](#) > [Formicidae](#) > [Ponerinae](#) > [Anochetus](#) > [Anochetus madagascarensis](#)

See all *Anochetus madagascarensis* in [All Antweb](#) or [Bolton World Catalog](#)

or in

## Specimen: CASENT0104544

### Species: *Anochetus madagascarensis*

Name Status: ✓

### Locality Information:

Locality: [Madagascar](#): [Antsiranana](#): [Forêt de Binara, 7.5 km 230° SW Daraina](#)

Latitude: -13.255

Elevation: 375 m

Longitude: 49.6167

Elevation max error:

Lat. lon. max error:

Locality notes: coordinates obtained from GPS

### Collection Information:

Collection code: [BLF09557](#)

Date collected: 1 Dec 2003

Collected by: [B.L. Fisher](#)

Date collected end:

Habitat: [tropical dry forest](#)

Method: 4 Malaise traps

Microhabitat:

Collection notes: 1-7 Dec 03

### Specimen Information:

Life stage: 1m

Type status:

Located at: [CASC](#)

Medium: pin

Owned by: [CASC](#)

DNA notes:

Determined by:

Date determined: 9 Mar 2004

Specimen notes:



[Enlarge Map](#)

Specimen data uploaded by California Academy of Sciences | [See something amiss? Send us an email.](#)

### Specimen Image:



[Global...](#)[Regions...](#)[Projects...](#)[Favorites!](#)

Search for

Go »

[Advanced Search](#)

Global: [All Antweb](#) > [Formicidae](#) > [Myrmicinae](#) > [Acanthognathus](#) ↕

## AntWeb Participation

How to Participate

### Images

- [Field Museum imaging manual](#) using LAS 4.2. 1 March 2013
- [How we Image ants](#) using LAS 3.8 Leica software DFC450 camera (PDF) 20 Dec 2011
- [How to image: taking lateral shots using LAS 3.8](#) (video) 6 Jan 2012
- [Positioning for better Automontage images using LAS 3.8](#) (video) 15 Feb 2012
- [How to Image Labels](#) (video) 3 May 2012
- [A new tool for imaging, the Ant Spinner](#) (youtube video link) 20 Dec 2011
- [How to Automontage](#) using the JVC camera and stand alone Automonage (PDF) 11/06/2010
- [How to Photoshop images before uploading](#) (PDF) 16/04/2010
- [How to upload images](#) (PDF) 04/05/2010
- [How to use the Image Picker Tool](#) (PDF) 26/03/2010

### Specimens

- [Overview of specimen data](#) capture and submission (PDF) 2012-02-20
- [Specimen template example](#) and instructions (XLS) 2012-02-26

### How to Develop a Regional Species List

- [How to develop and update region/project](#) species list and home page (PDF) 2012-02-20
- [Species list example](#) (XLS) 2012-02-20

### Editing Natural History on Taxon Pages

### Ancillary Web Pages



Results for the species *Anochetus madagascariensis* Forel:


Classified in: Vespoidea: Formicidae: Ponerinae: Ponerini: Anochetus

Status of name: Valid, Subsequent name/combination

Date of description: 1887

Described by: Forel, page(s) 382

Citation of original description:

- o [Forel, A.](#) 1887. Fourmis récoltées à Madagascar, par le Dr. Conrad Keller. *Mitt. Schweiz. Entomol. Ges.* 7: 381-389. [View](#) or download [entire file \(414k\)](#) 

Synonyms of valid name:

- o *Anochetus africanus* var. *friederichi* Forel

The valid name and its synonyms have been cited as:

- o *Anochetus africanus* var. *friederichi* Forel
- o *Anochetus africanus* var. *madagascariensis* Forel
- o *Anochetus africanus* var. *madagascariensis* Forel
- o *Anochetus madagascariensis* Forel
- o *Anochetus madagascariensis* Forel

Base reference(s) for the family Formicidae:

- o [Bolton 1995](#)

[Additional information](#)



*v. madagascariensis*  
Forel

*A. africanus*  
Mayr  
*v. madagascariensis*  
Forel  
F. Zondrio  
p. Tamatavé  
(Madagascar)

Coll. Forel.

Typus

CASENT  
0101574  
ANTWEB

*A. africanus* Mayr

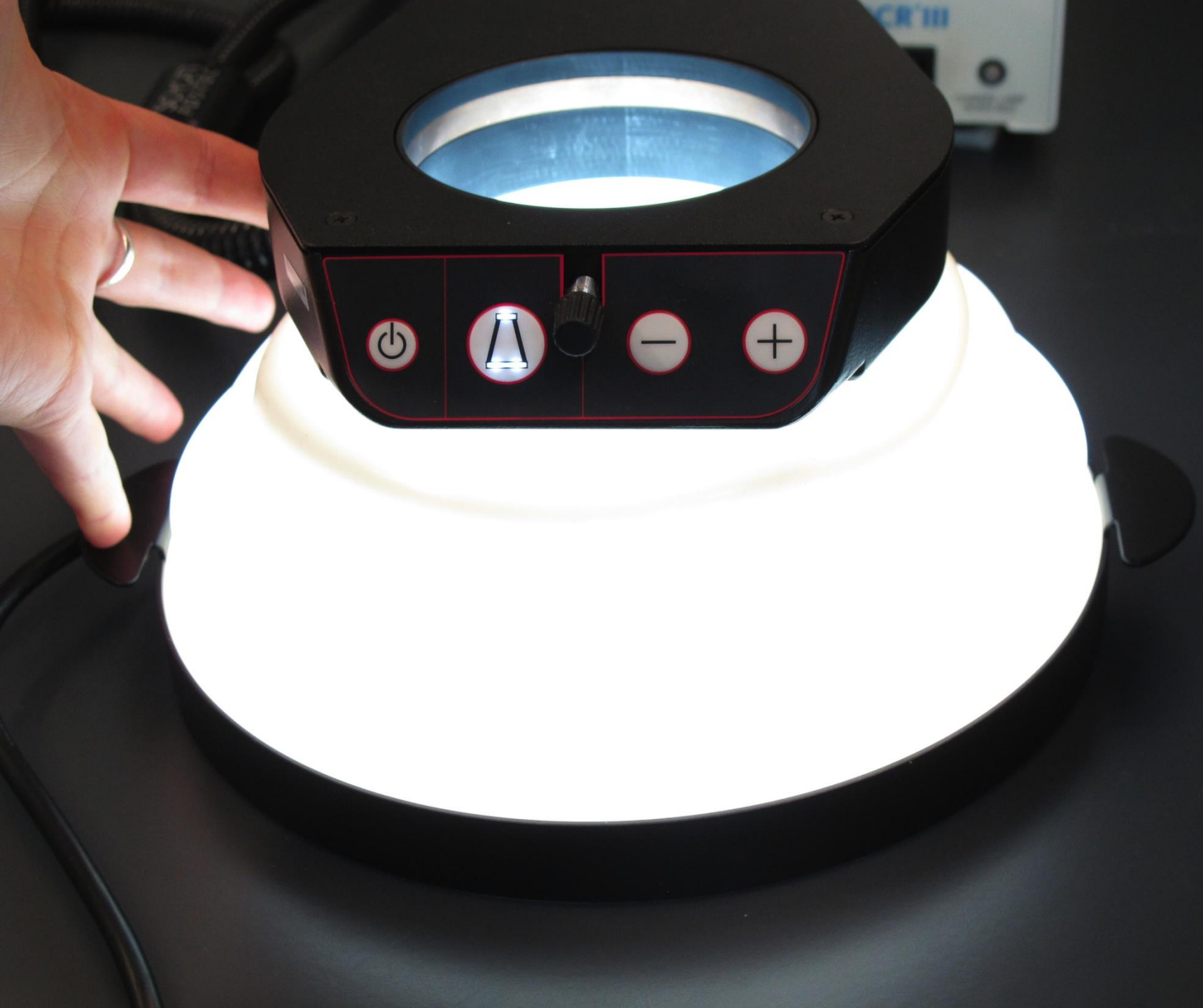
= *Stenomymex africanus* Mayr.

Var. *madagascariensis* n. var. ♂ L. 6 à 6,5 mill. Entièrement d'un rouge jaunâtre, ou bien rougeâtre avec l'abdomen et le thorax en partie brunâtres. Le bord interne des mandibules est absolument linéaire, sans trace de dentelures. Il se termine avant l'extrémité par un coin très marqué, coupé à angle droit, encore plus marqué que chez l'*A. Sedilloti* Emery. Pronotum lisse et luisant, parfois avec quelques rides. Mesonotum ridé transversalement. Metanotum finement réticulé et assez mat. Ecaille mutique, faiblement échancrée au sommet. Du reste comme la forme typique.

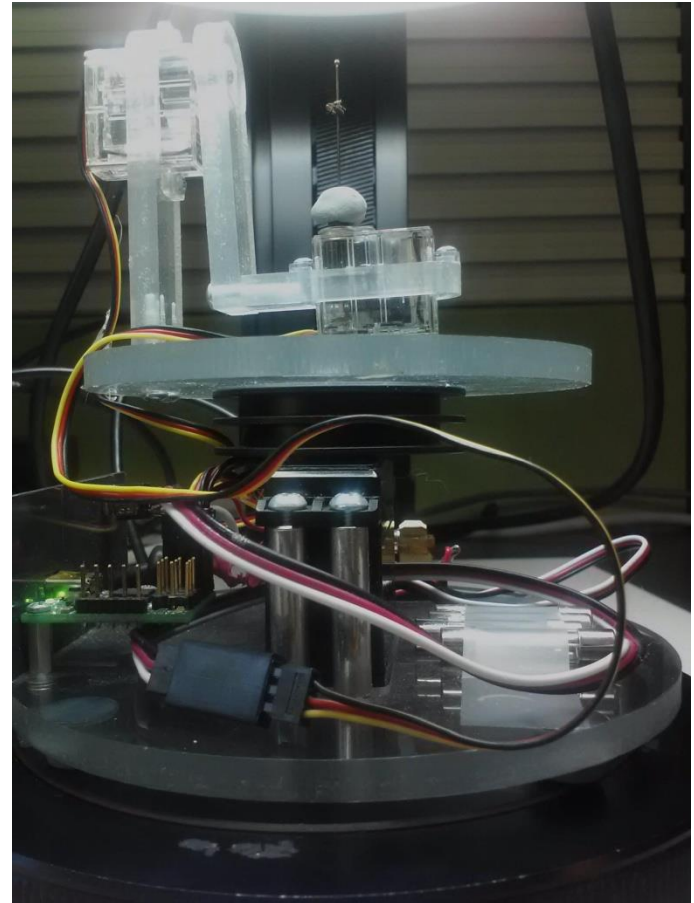
Nossi-bé et environs de Tamatavé (Dr. Conrad Keller).

Cette espèce a la faculté de sauter (Dr. Keller), faculté qui paraît donc être propre à tous les *Odontomachides*.





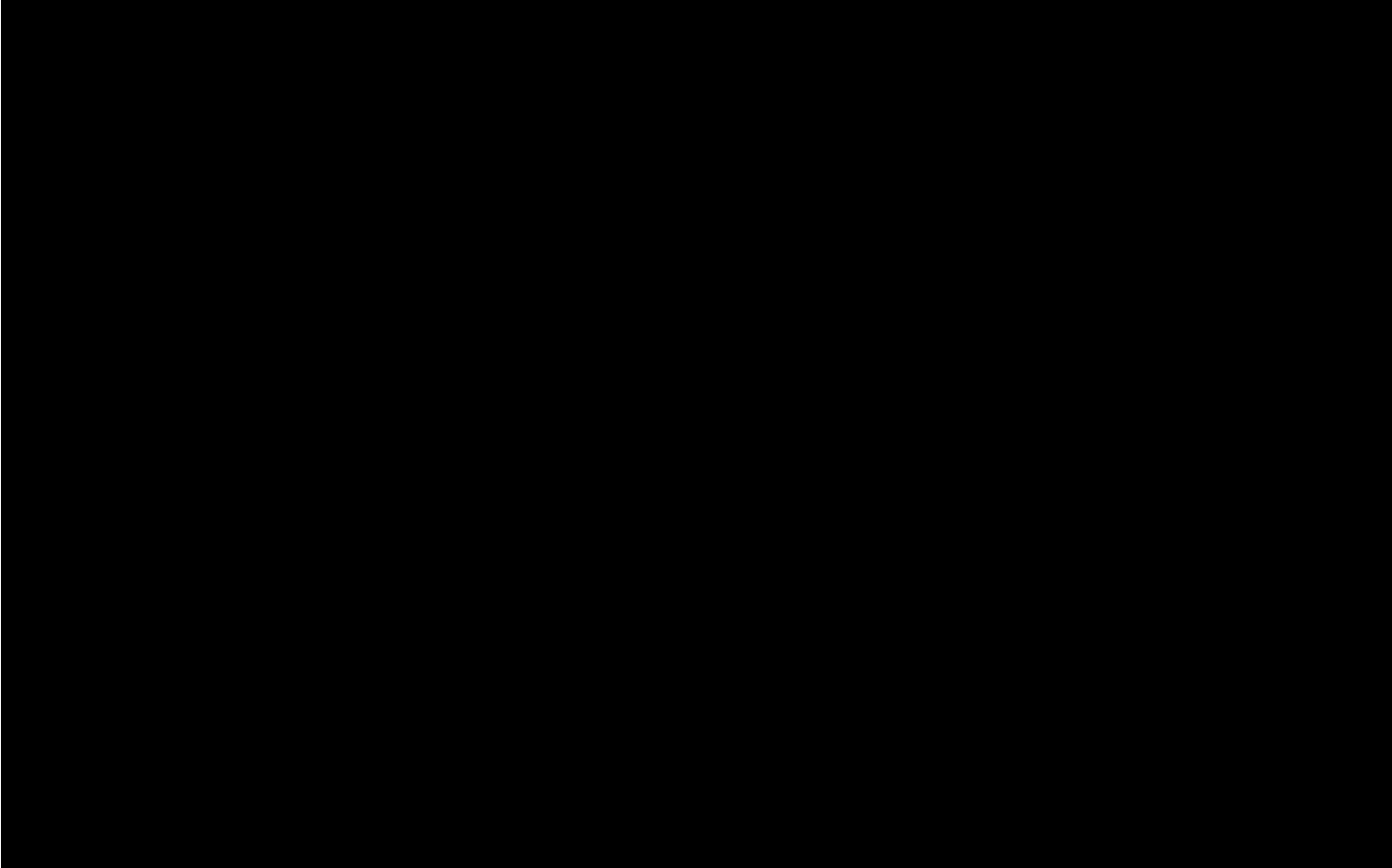


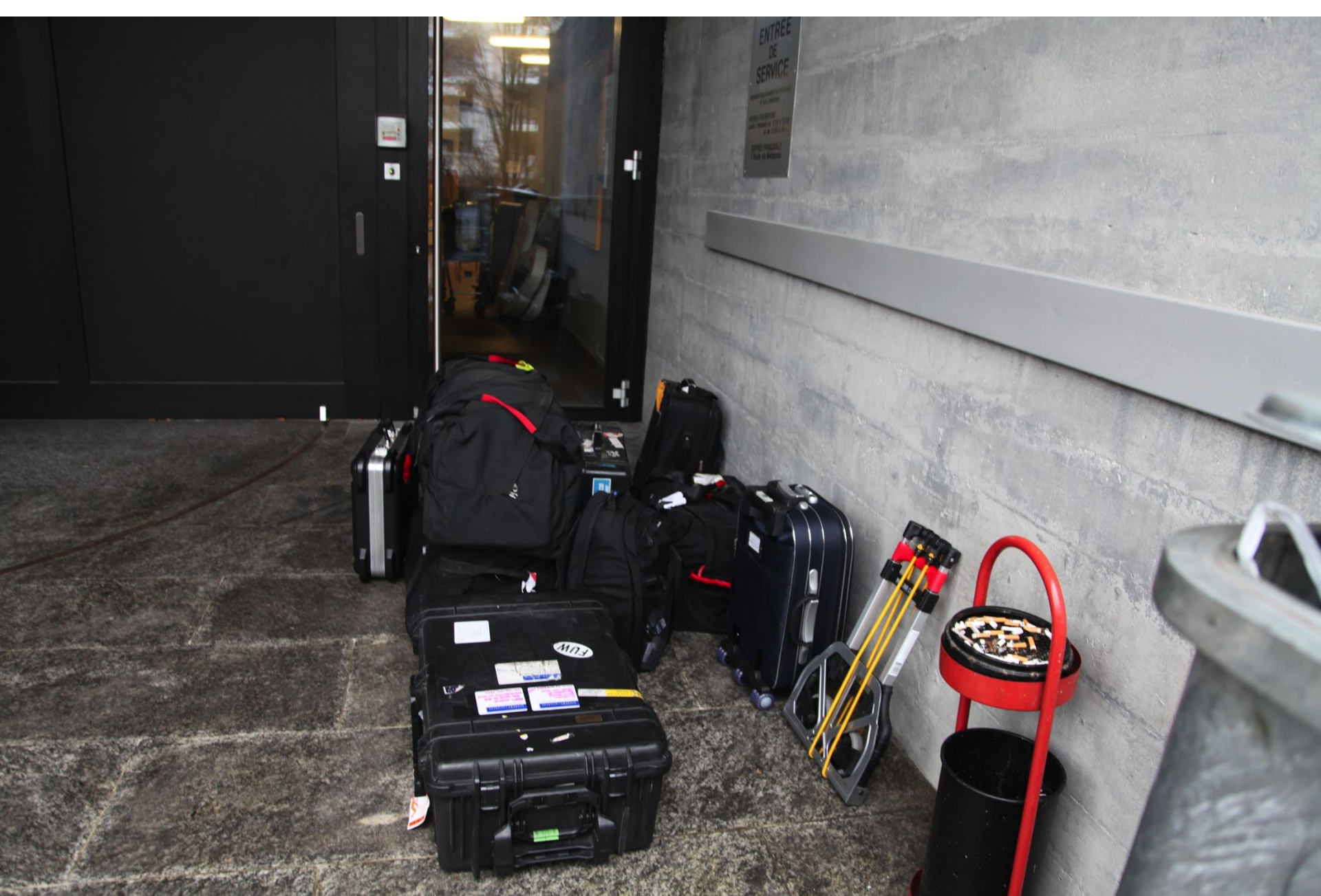












ENTREE  
DE  
SERVICE

MOT











Specimen Code  
 CASEN100000  
 CASEN100001  
 CASEN100002  
 CASEN100003  
 CASEN100004  
 CASEN100005  
 CASEN100006  
 CASEN100007  
 CASEN100008  
 CASEN100009  
 CASEN100010  
 CASEN100011  
 CASEN100012

only 1 M  
 if only pin

7733 416	7743 417	7753 418	7763 500	7773 502
7734 416	7744 418	7754 411	7764 500	7774 502
7735 418	7745 411	7755 411	7765 501	7775 505
7736 417	7746 411	7756 411	7766 501	7776 505
7737 417	7747 411	7757 411	7767 501	7777 505
7738 417	7748 418	7758 411	7768 501	7778 505
7739 417	7749 411	7759 411	7769 501	7779 505
7740 412	7750 411	7760 411	7770 502	7780 505
7744 417	7754 418	7764 500	7774 502	
7742 417	7752 418	7762 500	7772 502	82 501





SpecimenCode Spn  
 CASEN10003284 Myrmica  
 CASEN10003285 Myrmica  
 CASEN10003286 Myrmica  
 CASEN10003287 Myrmica  
 CASEN10003288 Myrmica  
 CASEN10003289 Myrmica  
 CASEN10003290 Myrmica  
 CASEN10003291 Myrmica  
 CASEN10003292 Myrmica  
 CASEN10003293 Myrmica  
 CASEN10003294 Myrmica  
 CASEN10003295 Myrmica  
 CASEN10003296 Myrmica  
 CASEN10003297 Myrmica  
 CASEN10003298 Myrmica  
 CASEN10003299 Myrmica  
 CASEN10003300 Myrmica  
 CASEN10003301 Myrmica  
 CASEN10003302 Myrmica  
 CASEN10003303 Myrmica  
 CASEN10003304 Myrmica  
 CASEN10003305 Myrmica  
 CASEN10003306 Myrmica  
 CASEN10003307 Myrmica  
 CASEN10003308 Myrmica  
 CASEN10003309 Myrmica  
 CASEN10003310 Myrmica  
 CASEN10003311 Myrmica  
 CASEN10003312 Myrmica  
 CASEN10003313 Myrmica  
 CASEN10003314 Myrmica  
 CASEN10003315 Myrmica  
 CASEN10003316 Myrmica  
 CASEN10003317 Myrmica  
 CASEN10003318 Myrmica  
 CASEN10003319 Myrmica  
 CASEN10003320 Myrmica  
 CASEN10003321 Myrmica  
 CASEN10003322 Myrmica  
 CASEN10003323 Myrmica  
 CASEN10003324 Myrmica  
 CASEN10003325 Myrmica  
 CASEN10003326 Myrmica  
 CASEN10003327 Myrmica  
 CASEN10003328 Myrmica  
 CASEN10003329 Myrmica  
 CASEN10003330 Myrmica  
 CASEN10003331 Myrmica  
 CASEN10003332 Myrmica  
 CASEN10003333 Myrmica  
 CASEN10003334 Myrmica  
 CASEN10003335 Myrmica  
 CASEN10003336 Myrmica  
 CASEN10003337 Myrmica  
 CASEN10003338 Myrmica  
 CASEN10003339 Myrmica  
 CASEN10003340 Myrmica  
 CASEN10003341 Myrmica  
 CASEN10003342 Myrmica  
 CASEN10003343 Myrmica  
 CASEN10003344 Myrmica  
 CASEN10003345 Myrmica  
 CASEN10003346 Myrmica  
 CASEN10003347 Myrmica  
 CASEN10003348 Myrmica  
 CASEN10003349 Myrmica  
 CASEN10003350 Myrmica  
 CASEN10003351 Myrmica  
 CASEN10003352 Myrmica  
 CASEN10003353 Myrmica  
 CASEN10003354 Myrmica  
 CASEN10003355 Myrmica  
 CASEN10003356 Myrmica  
 CASEN10003357 Myrmica  
 CASEN10003358 Myrmica  
 CASEN10003359 Myrmica  
 CASEN10003360 Myrmica  
 CASEN10003361 Myrmica  
 CASEN10003362 Myrmica  
 CASEN10003363 Myrmica  
 CASEN10003364 Myrmica  
 CASEN10003365 Myrmica  
 CASEN10003366 Myrmica  
 CASEN10003367 Myrmica  
 CASEN10003368 Myrmica  
 CASEN10003369 Myrmica  
 CASEN10003370 Myrmica  
 CASEN10003371 Myrmica  
 CASEN10003372 Myrmica  
 CASEN10003373 Myrmica  
 CASEN10003374 Myrmica  
 CASEN10003375 Myrmica  
 CASEN10003376 Myrmica  
 CASEN10003377 Myrmica  
 CASEN10003378 Myrmica  
 CASEN10003379 Myrmica  
 CASEN10003380 Myrmica  
 CASEN10003381 Myrmica  
 CASEN10003382 Myrmica  
 CASEN10003383 Myrmica  
 CASEN10003384 Myrmica  
 CASEN10003385 Myrmica  
 CASEN10003386 Myrmica  
 CASEN10003387 Myrmica  
 CASEN10003388 Myrmica  
 CASEN10003389 Myrmica  
 CASEN10003390 Myrmica  
 CASEN10003391 Myrmica  
 CASEN10003392 Myrmica  
 CASEN10003393 Myrmica  
 CASEN10003394 Myrmica  
 CASEN10003395 Myrmica  
 CASEN10003396 Myrmica  
 CASEN10003397 Myrmica  
 CASEN10003398 Myrmica  
 CASEN10003399 Myrmica  
 CASEN10003400 Myrmica

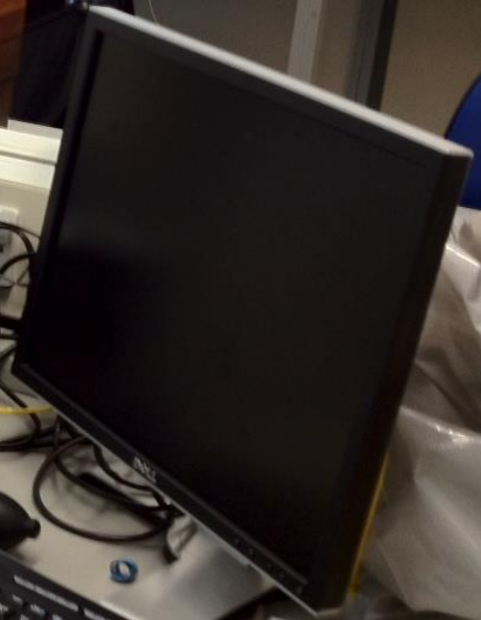
alg 1 M614 pin  
 only pin from 10



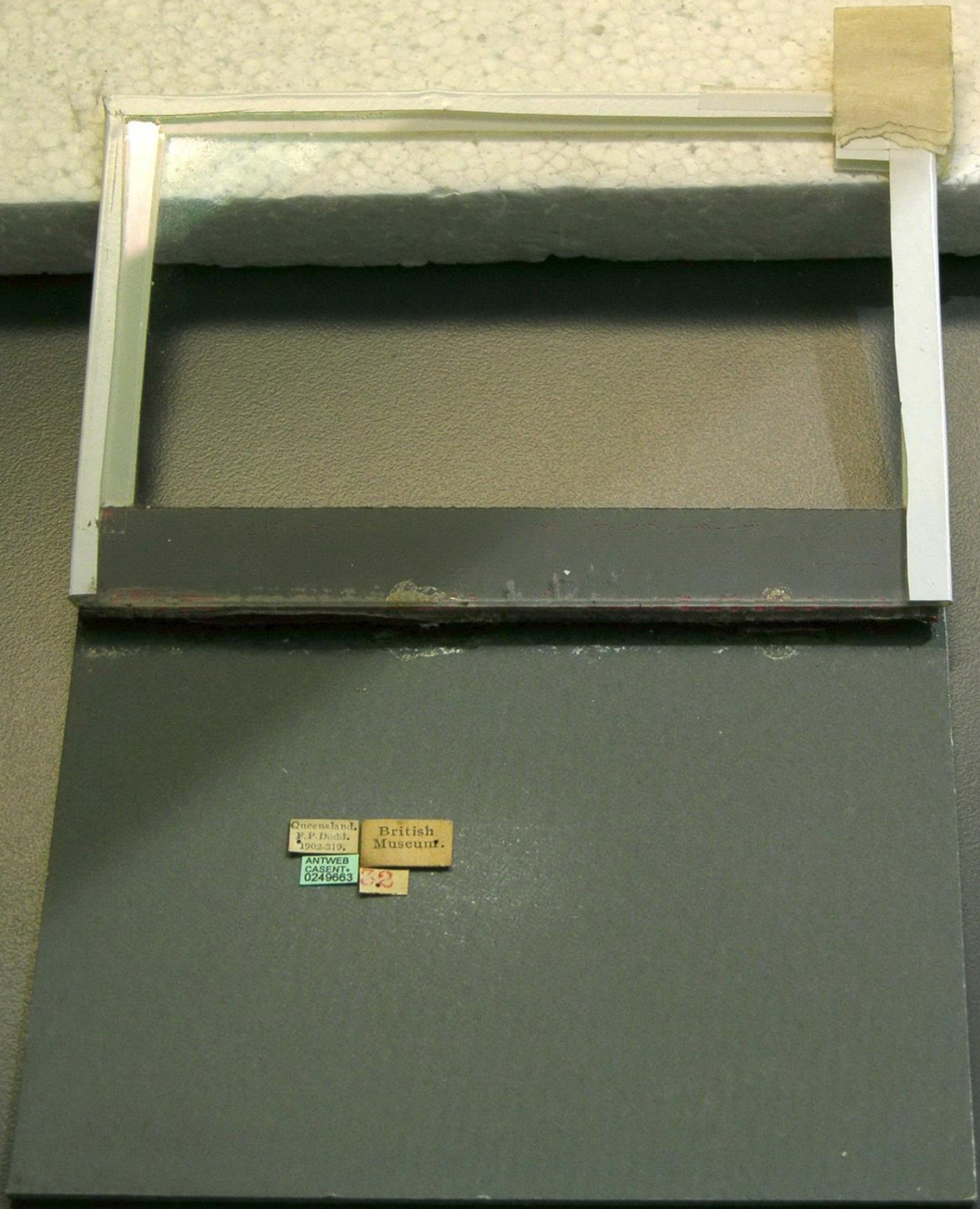


smartdrive

smartdrive







Queensland,  
P. P. Dool,  
1902-1903.  
ANTWERP  
CASENT.  
0249663

British  
Museum.

52



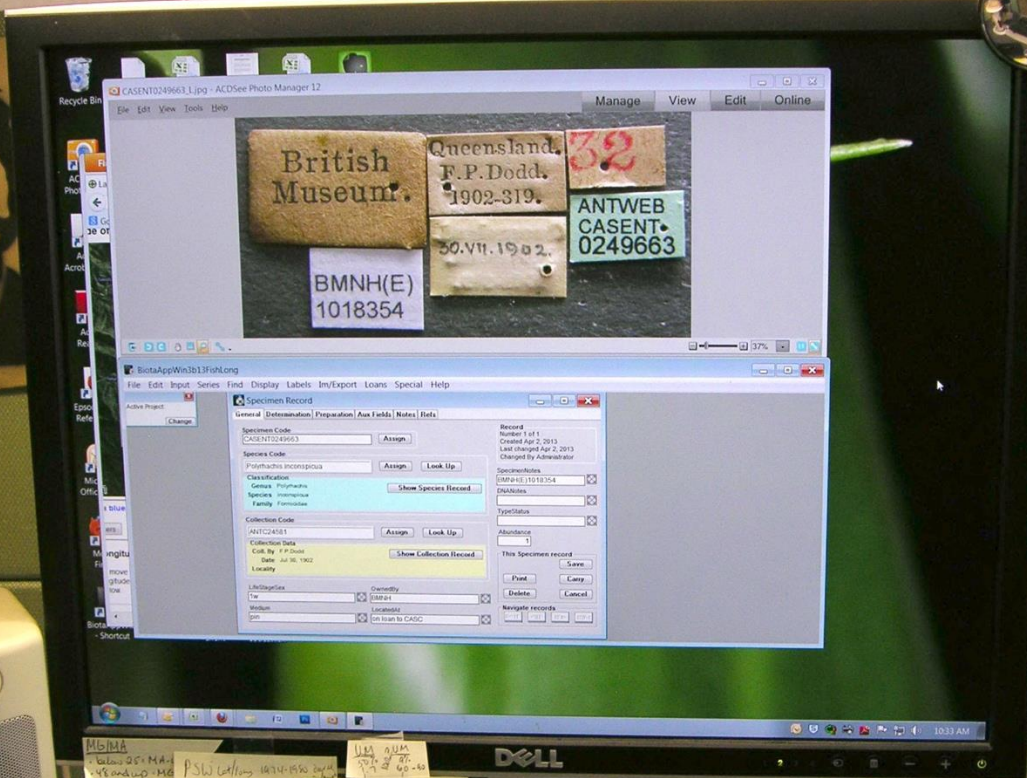
Queensland.  
F.P.Dodd.  
1902-319.

British  
Museum.

ANTWEB  
CASENT.  
0249663

32





Handwritten notes on a small piece of paper taped to the bottom of the monitor. The text includes 'MBMA below 25th Mar', 'PSW calling 1870-1892', and 'Zebra 90'.

Handwritten notes on a spiral notebook on the desk, including the name 'Zebra' and some illegible scribbles.













# AntWeb Curator Tools

Logged in as MEsposito@calacademy.org | [Log out](#) | [Home](#)

Image Upload Lock acquired. Click here to [unlock](#).

The lock will be automatically released in **60.0 minutes**.

As an admin, you may [disable](#) the Image Upload Facility.

CASENT0904473_P.tif	11212144	
CASENT0904467_P.tif	12672556	
CASENT0904471_P_2.tif	6276740	
CASENT0904470_P.tif	10462936	
CASENT0904469_H.tif	10001608	
CASENT0904468_H.tif	12851540	
CASENT0904467_H_2.tif	7241168	
CASENT0904470_H.tif	11745000	
CASENT0904467_D.tif	13200796	
CASENT0904468_D.tif	13253732	
CASENT0904469_H_2.tif	12356176	
CASENT0904473_H.tif	10182780	
CASENT0904471_P.tif	8175436	
CASENT0904468_P.tif	11828448	
CASENT0904470_D.tif	11929156	
CASENT0904467_H.tif	13683220	
CASENT0904472_P.tif	8809668	
CASENT0904471_D.tif	12687676	
CASENT0904472_H.tif	12414492	

## Attribution

[Add New Photographer](#)

Zach Lieberman

[Edit Photographer Name](#)

Note: All images will be uploaded under our [Attribution-ShareAlike 3.0 \(cc-by-sa-3.0\) Creative Commons License](#).

[Upload Files](#)

# AntWeb Curator Tools

Logged in as MEsposito@calacademy.org | [Log out](#) | [Home](#)

Image Upload Lock **acquired**. Click here to [unlock](#).

The lock will be automatically released in **60.0 minutes**.

As an admin, you may [disable](#) the Image Upload Facility.

## Images Successfully Uploaded

(Image Upload Unlocked)

### Replaced Images

The following images have been uploaded:

- casent0904469\_p
- casent0904469\_d
- casent0904472\_d
- casent0904471\_h
- casent0904473\_d
- casent0904473\_p
- casent0904471\_p\_2
- casent0904470\_p
- casent0904467\_p
- casent0904469\_h
- casent0904467\_h\_2
- casent0904468\_h
- casent0904470\_h
- casent0904467\_d
- casent0904468\_d
- casent0904473\_h
- casent0904469\_h\_2
- casent0904471\_p
- casent0904470\_d
- casent0904468\_p
- casent0904467\_h
- casent0904472\_p
- casent0904471\_d
- casent0904472\_h

[Upload More Images](#) | [View Recently Uploaded Images](#) | [Return to Admin Homepage](#)



## Curator Information

Manage Your [Login Information](#)

View Your [Specimen Upload Logs](#)

View files in your curator dir: [/web/curator/1](#).

## Specimen Data

**Upload** Specimen File:  
(tab-delimited .txt file)

No file chosen

## Upload Specimen Images

[Specimen Image Uploader](#)

## Create a New Ancillary Page

Create an ancillary page for:

## Projects

**Download** Project  
Species List for:

**Upload** Project  
Species List for:  
(tab-delimited .txt file)

No file chosen

**Reload** Project  
Species List for:

### AntWeb Statistics

**15643** valid species +  
subspecies

**23539** total species +  
subspecies

**330801** specimens

**11403** species imaged

**25525** specimens imaged

**107344** total specimen  
images

### Administrator Functions

- [Master Administration](#)
- [Antweb Statistics](#)
- [Server Status](#)
- [Orphan Manager](#)
- [Unlock Image Upload](#)
- [User Login List](#)
- [All Upload Logs](#)

### Odd Reports

- [Unimaged Bolton Ants](#)
- [AntWeb Logs](#)
- [Upload Files](#)
- [Countries List](#)
- [Bioregions List](#)
- [Image Likes](#)
- [Image Likes Display](#)
- [Recent Description Edits](#)

### Technical Functions

- [Plazi Test](#)
- [Cache Manager](#)
- [Generate](#) All Home Pages
- [Generate](#) Recent Desc Edits
- [Generate](#) Statistics
- [Run](#) Materialize Images
- [Update](#) Advanced Search
- [Regenerate](#) Project Resources
- [Reload](#) All Project Files
- [Calculate](#) Taxon is Valid Names
- [Update](#) Formicidae Projects
- [Check](#) Integrity
- [Access](#) direct by taxon\_name



