



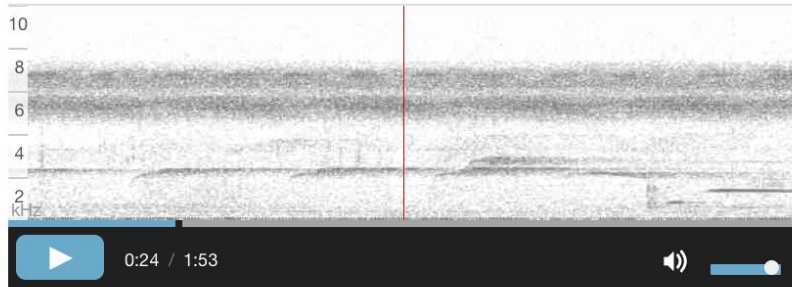
Vouchered Animal Communication Signals

Michael Webster

Dept. of Neurobiology & Behavior, Cornell

The **Cornell** Lab  of Ornithology
Macaulay Library

ML 29734



[LINKS AND EMBED »](#)

[Add to Bin.](#)
[Add to Cart](#)

Musician Wren

Musician Wren -- *Cyphorhinus arada*

[BROWSE SPECIES »](#) [MORE VIDEO »](#) [MORE AUDIO »](#)

Age/Sex	Identification	Solicitation	Behavior	Note
1 Adult	100%	Natural Playback Self	song advertise	Response to playback: Approach. Response to playback: Normal song.

Locations Media and Equipment (1) Notes (1)

Theodore A Parker, III
27 Aug 1982 at 00:00

Geography
Peru
Madre de Dios

Locality
Manu National Park; Cocha
Cashu

Latitude/Longitude
-11.885 -71.409

Elevation
380 meters

Habitats
Rainforest



Musician Wren (*Cyphorhinus arada*)

ML Audio #29734

Recorded by Ted Parker, Peru, 1982

Macaulay Library contains:

>200,000 Audio

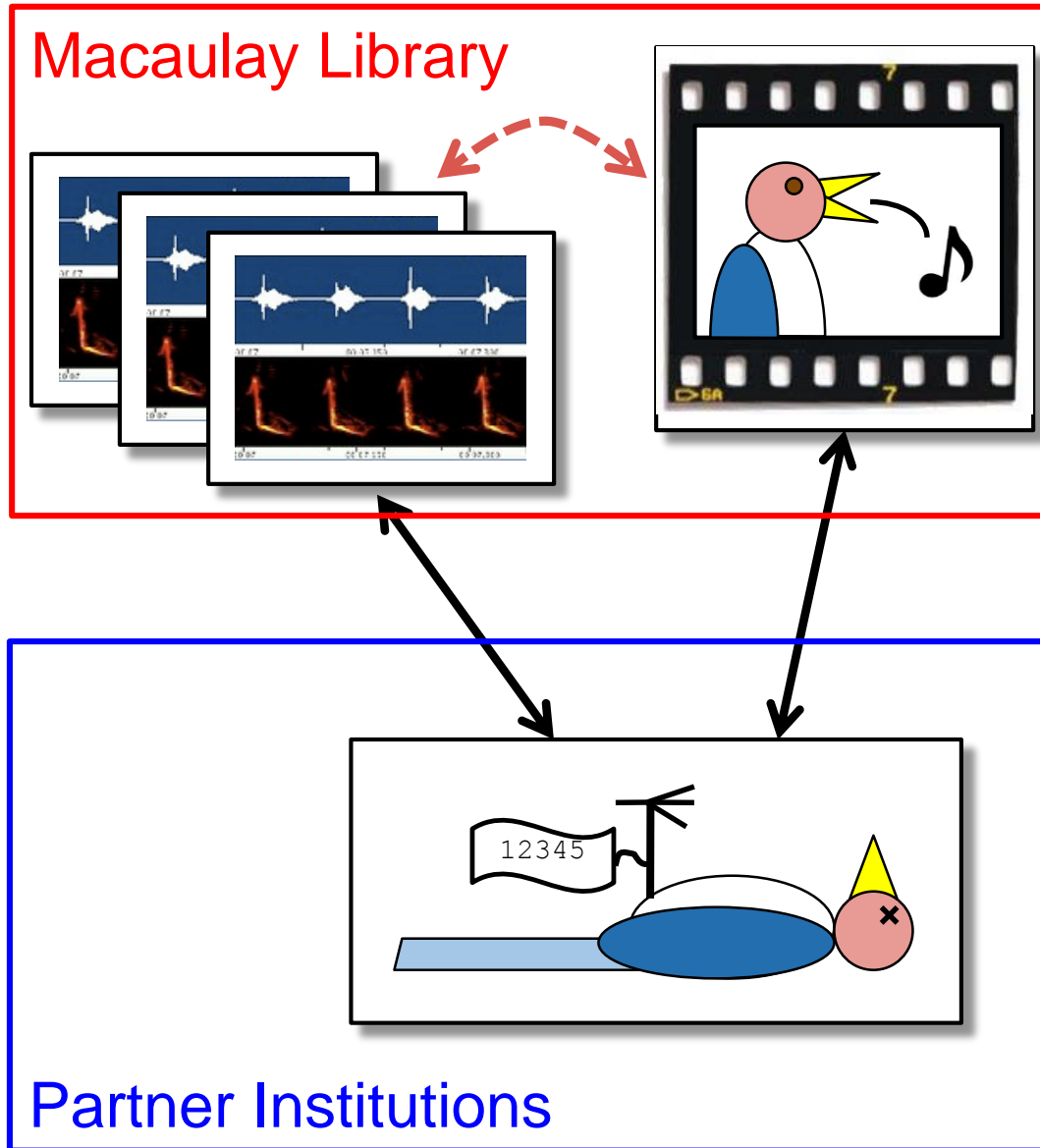
> 60,000 Video

>1.5 Million Photos

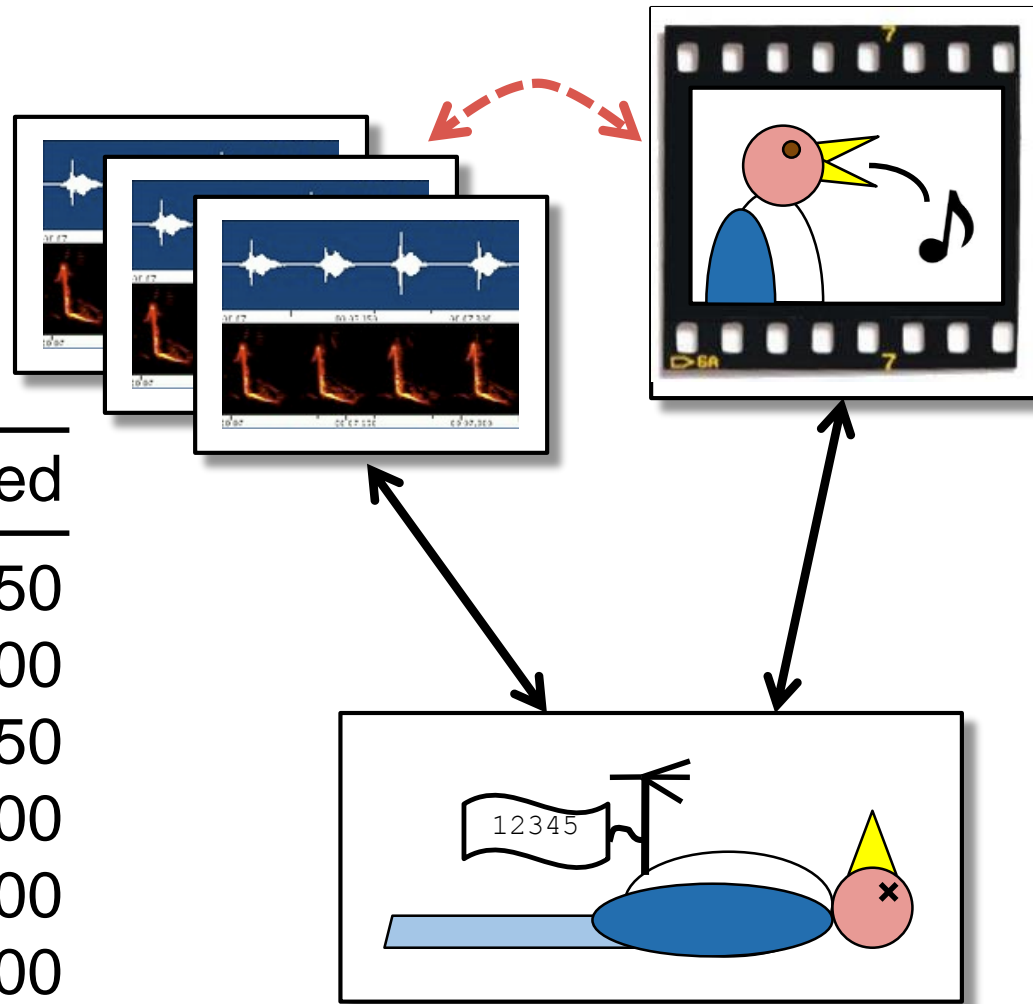
Digitization Progress to Date

Square peg, round hole

1. Digitizing for a while
2. Specialization (most digitizing at one site)
3. Connections across collections
4. Specimen/media connection is not 1-1

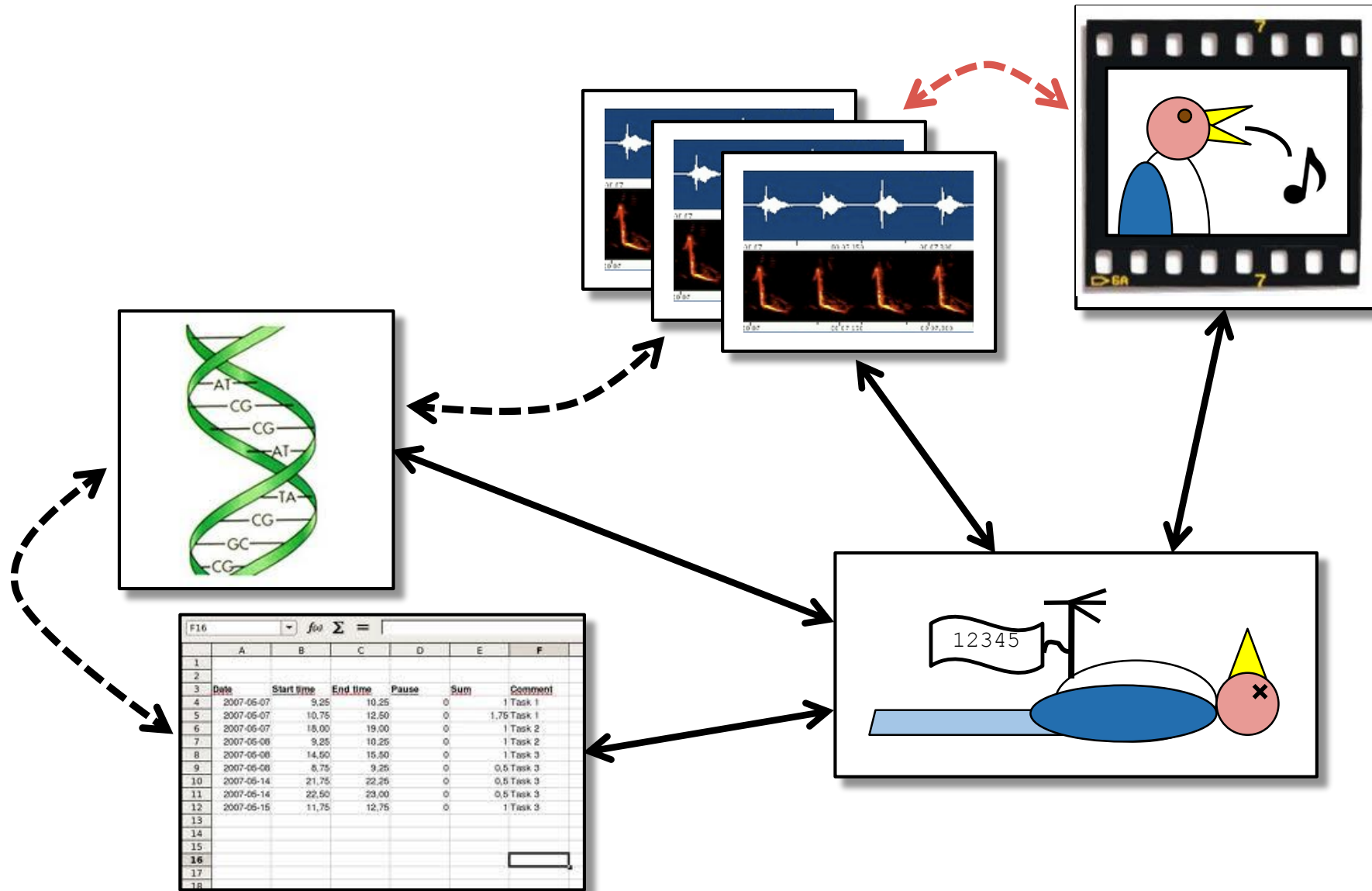


Digitization Progress to Date



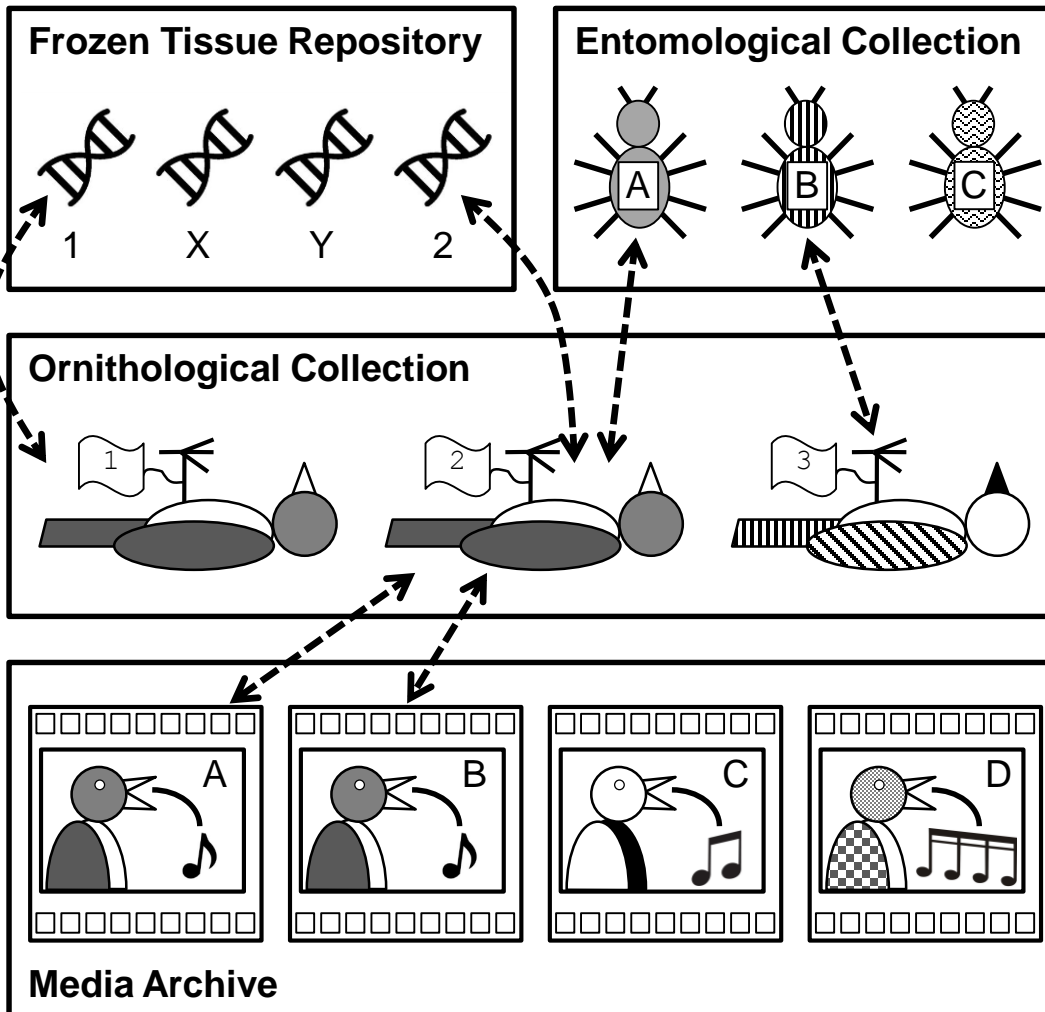
Institution	# Digitized
Univ. of Kansas	10,750
Cal Academy	4,600
Smithsonian	2,750
LSU	17,700
TNHC	2,300
Yale	1,000
Museu Goeldi	400
TOTAL	39,500

Connections across specimens/data



Connections across specimens/data

Collecting Event X



A New Type of “Specimen”



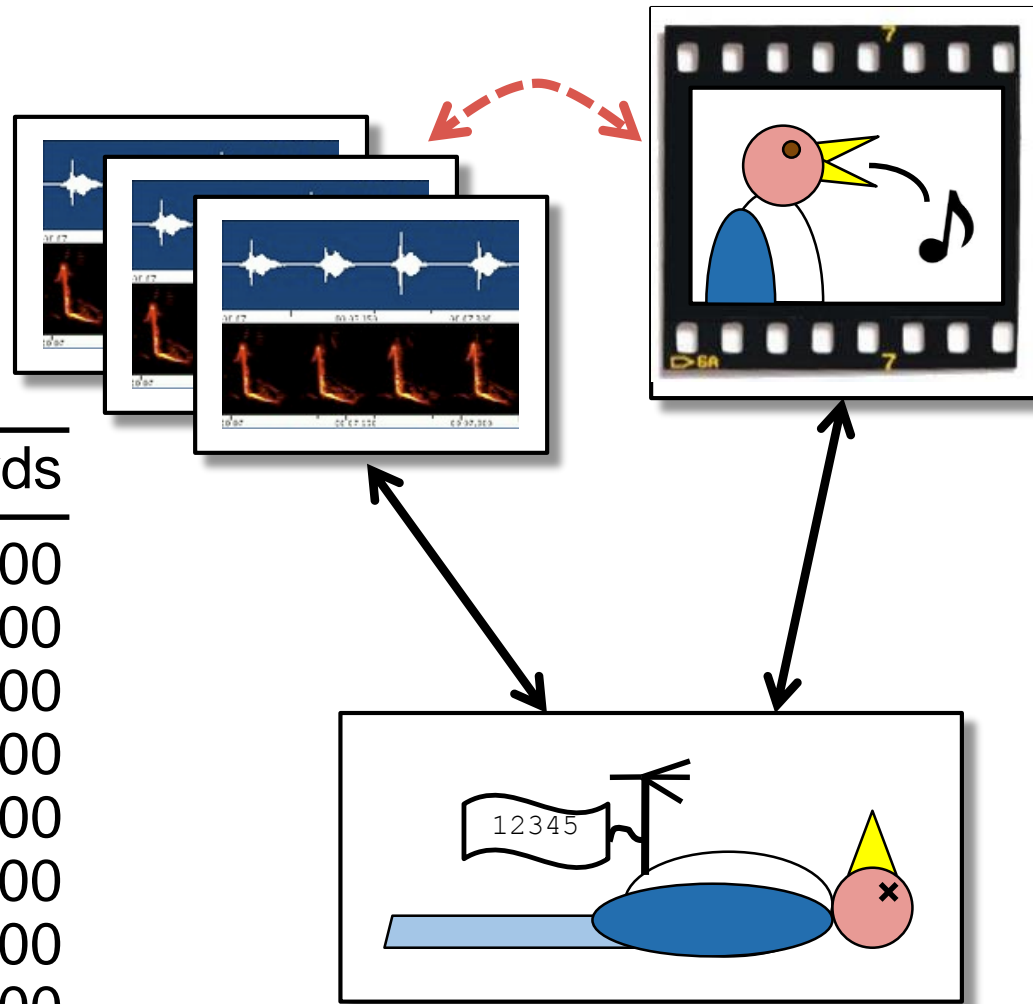
ML Video #455444, Magnificent Riflebird, Papua, Indonesia, 2009

Magnificent Riflebird (*Ptiloris magnificentus*)

Specimens at the Netherlands
Centre for Biodiversity Naturalis

The Macaulay video collection now
includes over 60,000 video specimens

Digitization Progress to Date



Institution	# Records
ML	220,000
CUMV Fish	91,000
CUMV Birds	56,000
KU Ornithology	122,000
KU Herpetology	341,000
TNHC Herpetology	94,000
LSU Ornithology	181,000
CAS Entomology	177,000
Yale Ornithology	147,000
TOTAL	1,429,000