

# **Resource challenges for small institutions**

**Luis A. Ruedas**

**Director, Museum of Vertebrate Biology  
Portland State University**



**PSU 28,241**

**UO 24,548**

**OSU 27,925**

**PCC 92,537**

**UW 44,158**

**WSU 28,686**

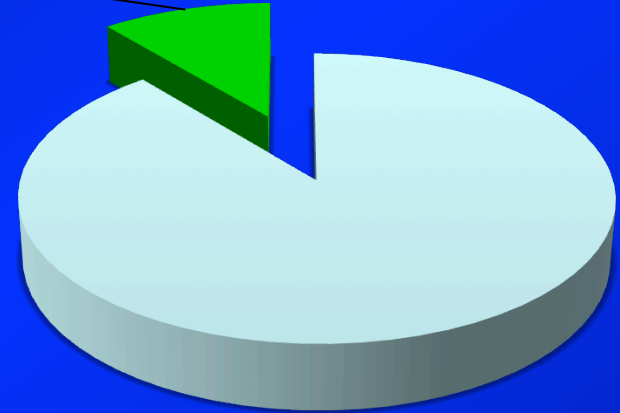
**U ID 12,493**

**ISU 15,553**

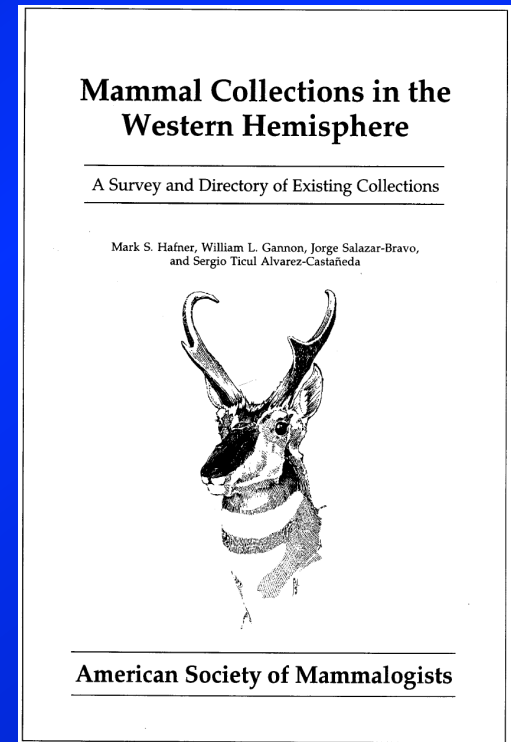
**KU 27,983**

**UNM 27,197**

**13%**



<b>PSU</b>	<b>28,241</b>	<b>5,500</b>
<b>UO</b>	<b>24,548</b>	<b>3,000</b>
<b>OSU</b>	<b>27,925</b>	<b>11,000</b>
<b>PCC</b>	<b>92,537</b>	<b>0</b>
<b>UW</b>	<b>44,158</b>	<b>40,000</b>
<b>WSU</b>	<b>28,686</b>	<b>32,500</b>
<b>U ID</b>	<b>12,493</b>	<b>3,700</b>
<b>ISU</b>	<b>15,553</b>	<b>0</b>
<b>KU</b>	<b>27,983</b>	<b>156,000</b>
<b>UNM</b>	<b>27,197</b>	<b>116,000</b>



<b>PSU</b>	<b>28,241</b>	<b>5,500</b>	<b>1946</b>
<b>UO</b>	<b>24,548</b>	<b>3,000</b>	<b>1876</b>
<b>OSU</b>	<b>27,925</b>	<b>11,000</b>	<b>1868</b>
<b>PCC</b>	<b>92,537</b>	<b>0</b>	<b>1961</b>
<b>UW</b>	<b>44,158</b>	<b>40,000</b>	<b>1861</b>
<b>WSU</b>	<b>28,686</b>	<b>32,500</b>	<b>1890</b>
<b>U ID</b>	<b>12,493</b>	<b>3,700</b>	<b>1889</b>
<b>ISU</b>	<b>15,553</b>	<b>0</b>	<b>1901</b>
<b>KU</b>	<b>27,983</b>	<b>156,000</b>	<b>1889</b>
<b>UNM</b>	<b>27,197</b>	<b>116,000</b>	<b>1889</b>

# Biology Department Budget

Services and supplies, 4.5%  
\$199,670.10

Teaching, 4%  
\$179,003.02



Payroll, 91.5%

# Biology Department Budget

Services and supplies, 4.5%  
\$199,670.10

Teaching, 4%  
\$179,003.02

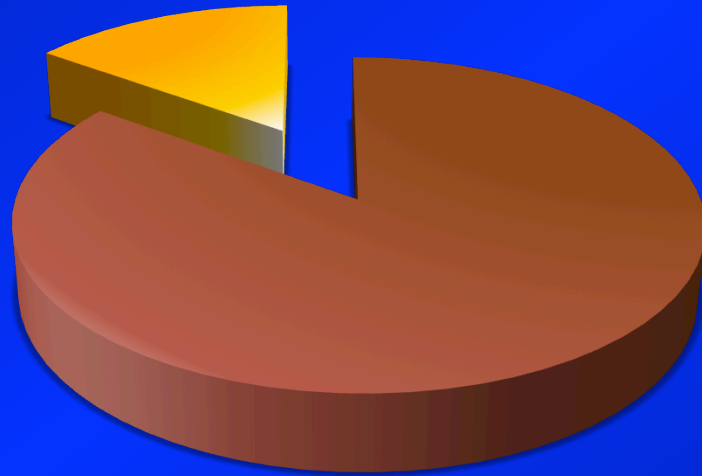


**Museum?**

**Payroll, 91.5%**

# Faculty, n = 20

3 “curators”



17 “other”

<b>FALL</b>	<p><b>INTERN: MARINE MAMML STRNDG NT - BI 404</b></p> <p><b>PROJ: ARTICULATION - BI 406</b></p> <p><b>PROJ: MUSEUM CURATION - BI 406</b></p>	<p><b>GENERAL ECOLOGY - BI 357 VERTEBRATE ZOOLOGY- BI 387</b></p>	
<b>WINTER</b>	<p><b>INTERN:MARINE MAML STNDNG NTWK - BI 404</b></p> <p><b>PROJ: MUSEUM CURATION - BI 406</b></p> <p><b>PROJ: ARTICULATION - BI 406</b></p>	<p><b>CONSERVATION BIOLOGY - BI 429</b></p> <p><b>PRINCIPLES OF BIOLOGY - BI 252</b></p>	<p><b>PROJ: AVIAN SPECIMAN PREP - BI 406</b></p> <p><b>POPULATION ECOLOGY - BI 476</b></p> <p><b>SEM: MARK WORKSHOP - BI 507</b></p>
<b>SPRING</b>	<p><b>PROJ: ARTICULATION - BI 406</b></p> <p><b>PROJ: MUSEUM CURATION - BI 406</b></p> <p><b>TOP: PINNIPED FIELD OBSRV - BI 410</b></p> <p><b>MARINE MAMMALS - BI 416</b></p>		<p><b>NATURAL HISTORY - BI 472</b></p>



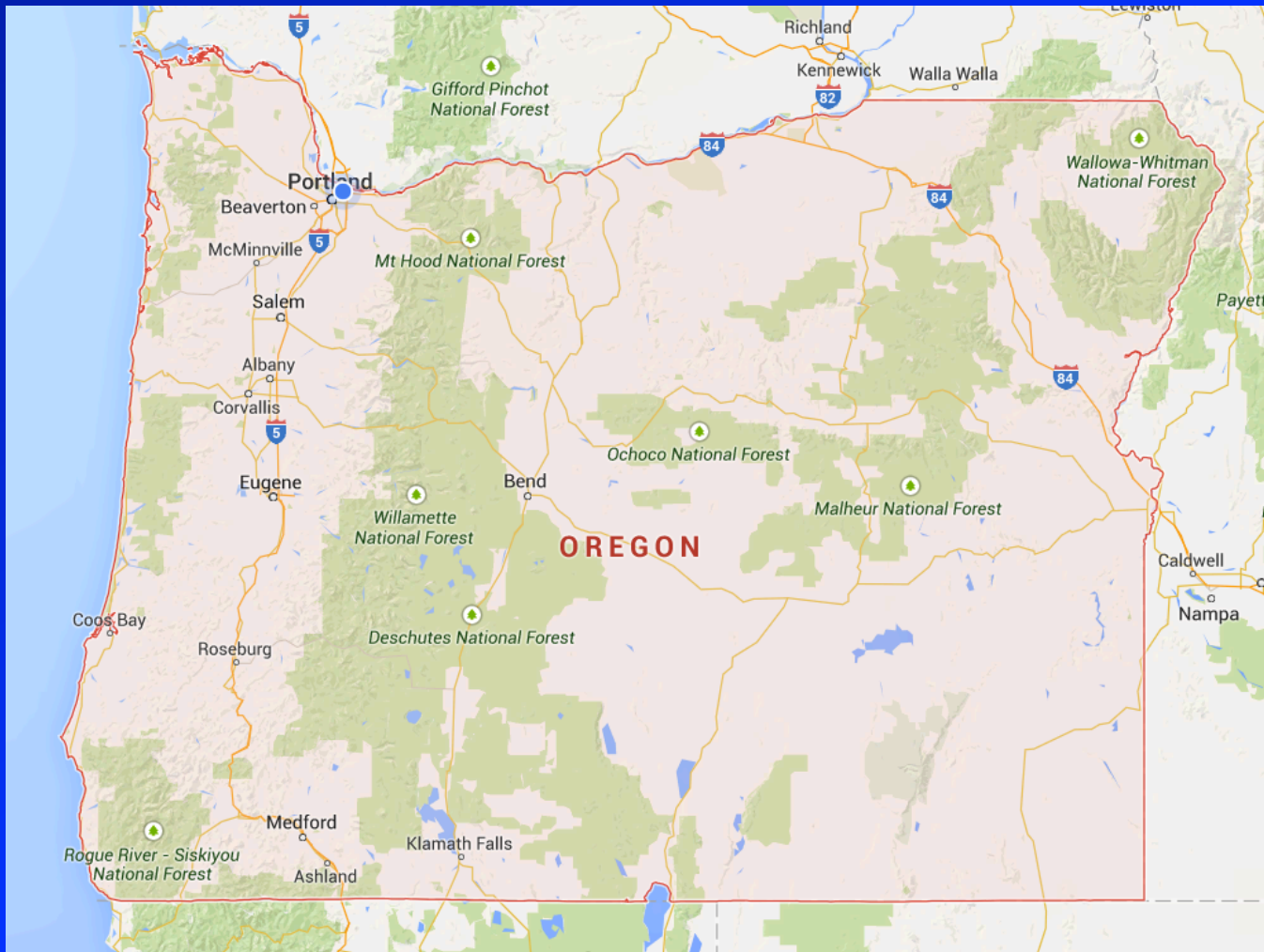
<b>FALL</b>	<b>INTERN: MARINE MAMML STRNDG NT - BI 404</b> <b>PROJ: ARTICULATION - BI 406</b> <b>PROJ: MUSEUM CURATION - BI 406</b>	<b>GENERAL ECOLOGY - BI 357 VERTEBRATE ZOOLOGY- BI 387</b>	
<b>WINTER</b>	<b>INTERN:MARINE MAML STNDNG NTWK - BI 404</b> <b>PROJ: MUSEUM CURATION - BI 406</b>  <b>PROJ: ARTICULATION - BI 406</b>	<b>CONSERVATION BIOLOGY - BI 429</b> <b>PRINCIPLES OF BIOLOGY - BI 252</b>	<b>PROJ: AVIAN SPECIMAN PREP - BI 406</b>  <b>POPULATION ECOLOGY - BI 476</b>  <b>SEM: MARK WORKSHOP - BI 507</b>
<b>SPRING</b>	<b>PROJ: ARTICULATION - BI 406</b> <b>PROJ: MUSEUM CURATION - BI 406</b> <b>TOP: PINNIPED FIELD OBSRV - BI 410</b> <b>MARINE MAMMALS - BI 416</b>	<b>NATURAL HISTORY - BI 472</b>	

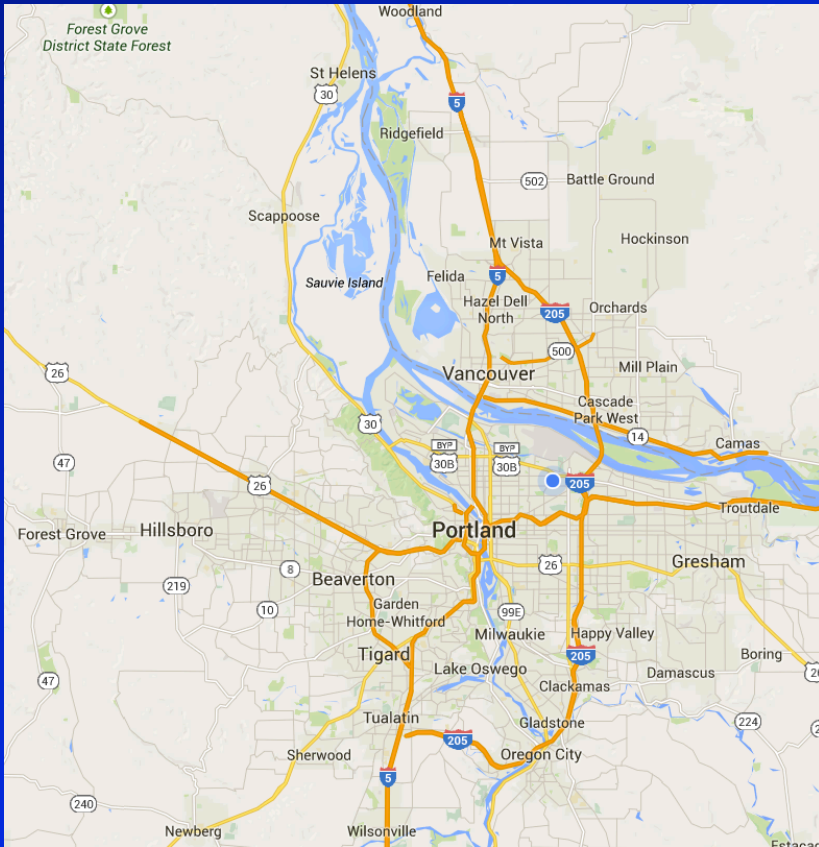
- + maintain a research program**
- + advising graduate students**
- + committees, etc.**

<b>PSU</b>	<b>28,241</b>	<b>5,500</b>	<b>1946</b>	<b>20</b>
<b>UO</b>	<b>24,548</b>	<b>3,000</b>	<b>1876</b>	<b>43</b>
<b>OSU</b>	<b>27,925</b>	<b>11,000</b>	<b>1868</b>	<b>34</b>
<b>UW</b>	<b>44,158</b>	<b>40,000</b>	<b>1861</b>	<b>64</b>
<b>WSU</b>	<b>28,686</b>	<b>32,500</b>	<b>1890</b>	<b>36</b>
<b>U ID</b>	<b>12,493</b>	<b>3,700</b>	<b>1889</b>	<b>35</b>
<b>UK</b>	<b>27,983</b>	<b>156,000</b>	<b>1889</b>	<b>43</b>
<b>UNM</b>	<b>27,197</b>	<b>116,000</b>	<b>1889</b>	<b>46</b>

**Research Support:  
Collections manager**

# The public face of the Museum of Vertebrate Biology





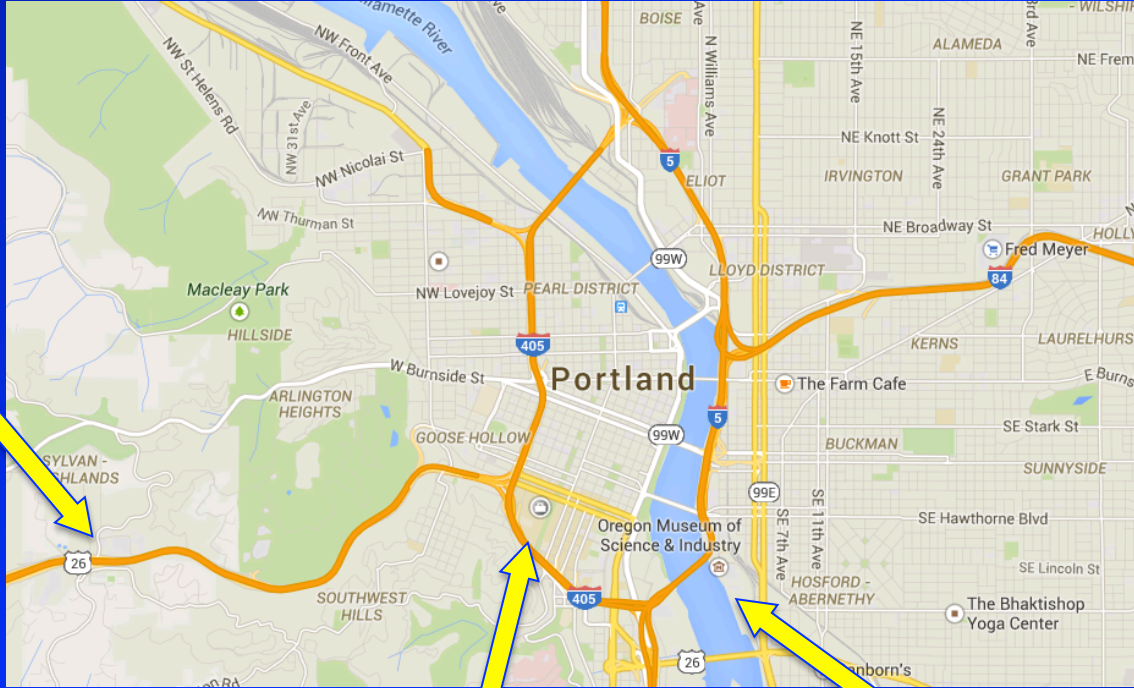
**WA:**  
**436,429**

**Metropolitan area:**  
**2,226,009**

**OR:**  
**1,789,580**



1.7M



?

**OMSI**

1M

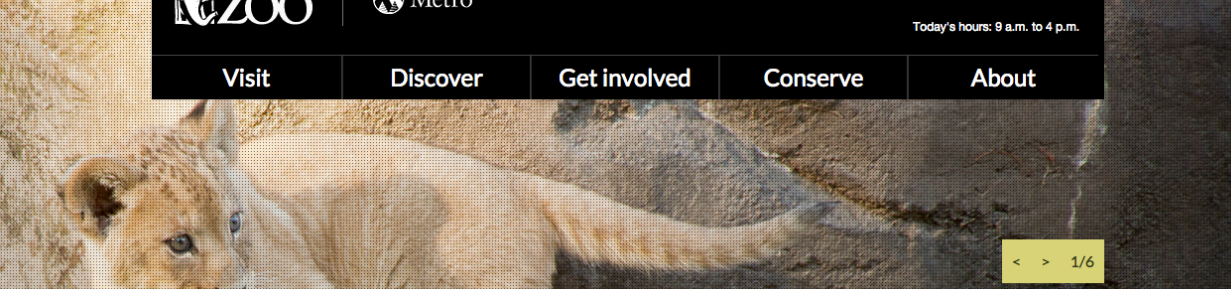
Welcome to the Oregon Zoo

www.oregonzoo.org

for educators zoo news gallery calendar

Today's hours: 9 a.m. to 4 p.m.

Visit Discover Get involved Conserve About



Plan your visit

Join the Oregon Zoo community on | Facebook | Twitter | Youtube | Instagram

PURCHASE TICKETS  
BECOME A MEMBER  
DONATE NOW

FEATURED EVENTS

- Safe Kids Day  
May 2, 2015
- Family turtle walk at Smith

Home | OMSI

https://www.omsiedu

Today's Hours: 9:30am - 5:30pm | Location (map): 1945 SE Water Ave. | Purchase Tickets

OMSI FOR: Everyone Kids Educators Professionals

HOME  
VISIT  
ON VIEW  
EMPIRICAL THEATER  
PLANETARIUM  
SUBMARINE  
EVENTS  
CAMPS & CLASSES  
SUPPORT  
CONTACT  
General Info: 800.955.8674

LOVE OMSI? GET UPDATES  
Your Email Address

GET READY FOR SUMMER

OMSI CAMPS & CLASSES NOW OPEN FOR REGISTRATION

REGISTER TODAY! Learn More

Upcoming Events

Our Blog

Membership

Invest in Possibilities  
An OMSI membership is your key to a

PSU » Page Not Found

## Page Not Found

We're sorry, but the page requested cannot be displayed.

Suggestions for finding the information you're looking for:

- Use the site map below
- Try our [search](#)
- Check the spelling of the address entered

### Site Map

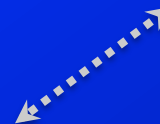
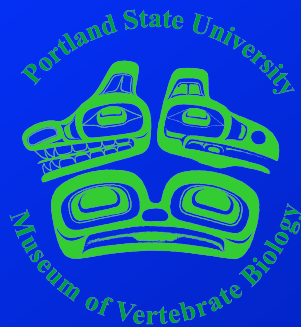
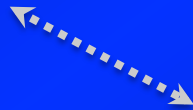
#### Main Menu

- [Admissions](#)
- [Schools & Colleges](#)
- ▾ [Academic Programs](#)
  - [Undergraduate Programs](#)
  - [Graduate Programs](#)
  - [Academic Programs Contact](#)
- ▾ [Campus](#)
  - [Living in Portland](#)
- [Athletics](#)
- [Library](#)

- **Lack of an informal STEM outlet**
  - **Fewer visitors**
  - **Lower visibility**



**Research  
Institutions**







CHAMPION  
CLEAR BANDS

BIO  
CORPORATION



- **Personnel**
  - **No collections manager**
    - **Student help generally unreliable & short term**
  - **No broader interactions**
- **Administrative**
  - **No defined budget**
  - **Mission undefined**
- **Funding**
  - **Low visibility**
  - **Small local market**
  - **Undefined role**

# **Resource challenges for small institutions**