

www.ala.org.au

Atlas of Living Australia

Delivering collection information

John La Salle

NCRIS

National Research
Infrastructure for Australia

An Australian Government Initiative



ATLAS OF **LIVING**
AUSTRALIA
sharing biodiversity knowledge

ALA – sharing biodiversity knowledge



>\$46 million investment

- \$8.2M NCRIS (2007-2011)
- \$30M SS EIF (2010-2012)
- \$2.8 M CRIS (2013-2015)
- \$5.7M NCRIS2013 (2013-2015)

NCRIS
National Research
Infrastructure for Australia
An Australian Government Initiative



A world-leading collaborative e-infrastructure integral to growing biodiversity knowledge



Partners – founding & beyond

- founding partners and contributors primarily biological collections and museums
- increased contribution & use by citizen science, government, industry



>57 million records
>750 data sets
>410 spatial layers
>3.7 billion records downloaded
>3.5 thousand users/day



National Research infrastructure

- NCRIS established by Howard Gov
- Currently within Education Dept (perhaps better fit in Industry & Science?)
- Related environmental infrastructures TERN (terrestrial ecological info/data capture) & IMOS (marine)



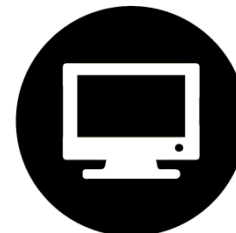
Data

- specimens
- occurrence
- images, sounds
- literature
- sequences
- more coming.....



Open source & open access

- ALA driving cultural shift regarding open access to data
- ALA at forefront of accessibility to public sector information



System

- data capture & aggregation
- data management
- data discovery
- data visualisation
- data analysis & reporting



Search the Atlas ...

Submit

Explore the Atlas of Living Australia

Australia's species

[View all](#)



Search for Australian flora and fauna species by common, scientific name or search by category.

[Browse species](#)

Species by location

[View all](#)



Search by pre-defined region, or enter an address or location to find the recorded species nearby.

[Browse locations](#)

Collections

[View all](#)



Learn about the institution, the collections they hold and view records of specimens that have been databased.

[Browse collections](#)

Sharing biodiversity knowledge

Contributed by Australia's academic, scientific, environmental communities and you.

[Get involved](#)

Mapping & analysis

[View all](#)



A spatial portal for investigating species occurrences within

Data sets

[View all](#)



Refine the list of all the data sets contained within the Atlas

Partner Profiles

[View all](#)



View our partner profiles and see how our key contributors

Blog & News Updates

[View all](#)

The Atlas welcomes two new university herbaria data providers.

ALA Educational Resources for primary school classes.

COMING SOON: New Phylogenetic 'Tree of Life' Tools

Home → Australia's species → *Callocephalon fimbriatum*

Callocephalon fimbriatum (Grant, 1803)

[Record a sighting](#)[Alerts ▲](#)

Gang-gang Cockatoo

Name source

[Australian Faunal Directory](#)

Rank

Species

Data links

[LSID](#)[JSON / WMS / RDF](#)

Species presence



Recorded In Australia



Terrestrial Habitats

Conservation status



Least Concern



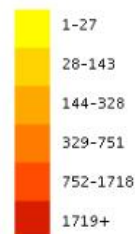
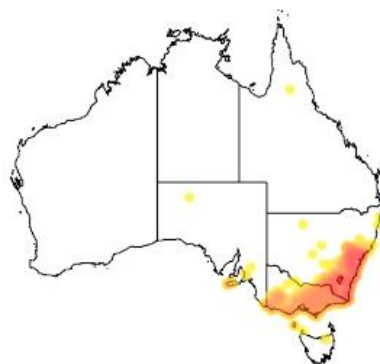
NSW Endangered Populations



NSW Vulnerable

[Overview](#)[Gallery](#)[Names](#)[Classification](#)[Records](#)[Literature](#)[Sequences](#)

Occurrence records map

[View records list](#)[Map & analyse records](#)

Source: Flickr EOL

Image by: Leo

Sounds



Source: Australian National Wildlife Collection

[View more details of this audio](#)

Description

The Gang-Gang Cockatoo is a dark grey cockatoo. It has prominent crest. The male has a red head and grey body. The female has grey head and body. Immature birds look like the hen except for some red in the head feathers in young males source: [OZ Animals](#)

Gang-gang cockatoos are one of the more distinctive and charismatic members of Australia's avifauna. These birds are primarily slate-grey, with the males easily identified by their scarlet head and wispy crest, while females have a grey head and crest and feathers edged with salmon pink on the underbelly. ... source: [Office of Environment and Heritage](#)



Species by location

Explore by pre-defined region



Pre-defined regions include states and territories, local government areas, biogeographic regions, marine regions, management regions and more. [Explore regions](#)

Explore by address or location



Simply enter an address or location to find the recorded species nearby. You can set the size of the search area and download the results. [Explore your area](#)

Sharing biodiversity knowledge

Contributed by Australia's academic, scientific, environmental communities and you.

[Get involved](#)

Blog & News Updates [View all](#)

- The Atlas welcomes two new university herbaria data providers.
- ALA Educational Resources for primary school classes.
- COMING SOON: New Phylogenetic 'Tree of Life' Tools

Connect with us





Search for Australian flora and fauna species by common, scientific name or search by category.

Browse species



Search by pre-defined region, or enter an address or location to find the recorded species nearby.

Browse locations



Learn about the institution, the collections they hold and view records of specimens that have been databased.

Browse collections

Australia's academic, scientific, environmental communities and you.

Get involved

Mapping & analysis

View all



A spatial portal for investigating species occurrences within specified locations and the environmental impacts.

Browse mapping

Data sets

View all



Refine the list of all the data sets contained within the Atlas by institution, integration status, content, resource, and license.

Browse data sets

Partner Profiles

View all



View our partner profiles and see how our key contributors help grow the Atlas of Living Australia.

Browse profiles

Blog & News Updates

View all

The Atlas welcomes two new university herbaria data providers.

ALA Educational Resources for primary school classes.

COMING SOON: New Phylogenetic 'Tree of Life' Tools

Connect with us

Add to Map Tools Import Export Help

My Prediction

Koala

Map options

My Prediction

Layer name

Rename

Opacity 50%

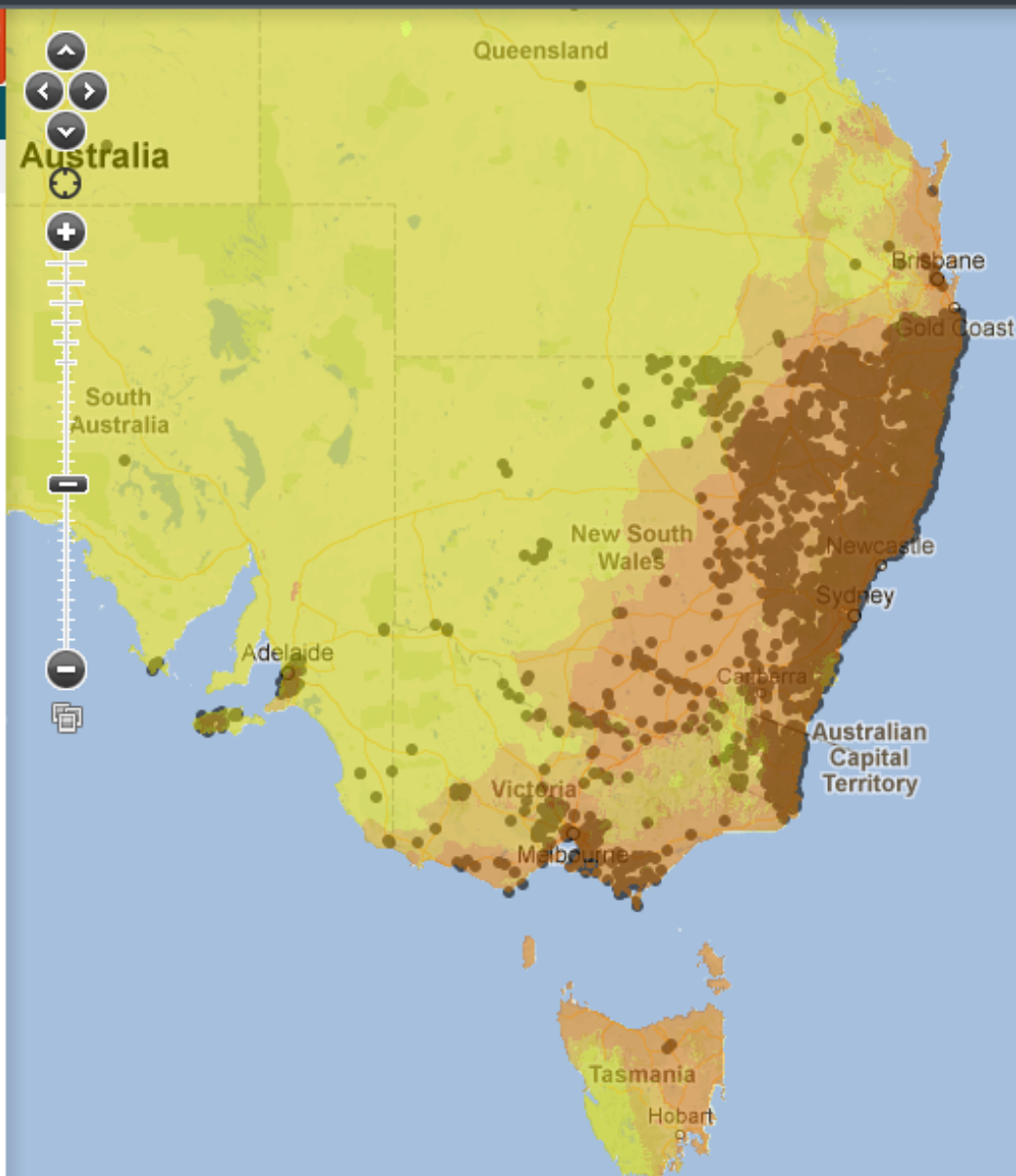
<input checked="" type="checkbox"/>	$-9999.0 < x$
<input checked="" type="checkbox"/>	$-9999.0 \leq x < 0.0$
<input type="checkbox"/>	$0.0 \leq x < 1.0E-4$
<input type="checkbox"/>	$1.0E-4 \leq x < 0.2$
<input type="checkbox"/>	$0.2 \leq x < 0.4$
<input type="checkbox"/>	$0.4 \leq x < 0.6$
<input type="checkbox"/>	$0.6 \leq x < 0.8$
<input type="checkbox"/>	$0.8 \leq x < 1.0$

Quick links

[View metadata for "My Prediction"](#)

[Download all records for "Koala"](#)

[Produce scatterplot for "Koala"](#)



Add to Map Tools Import Export Help

- Kakadu
- (cl1050:"Kakadu") AND (State conservation:"Endangered")

Map options

(cl1050:"Kakadu") AND (State conservation:"Endangered")

Layer name: (cl1050:"Kakadu") AND (State conservation:...)

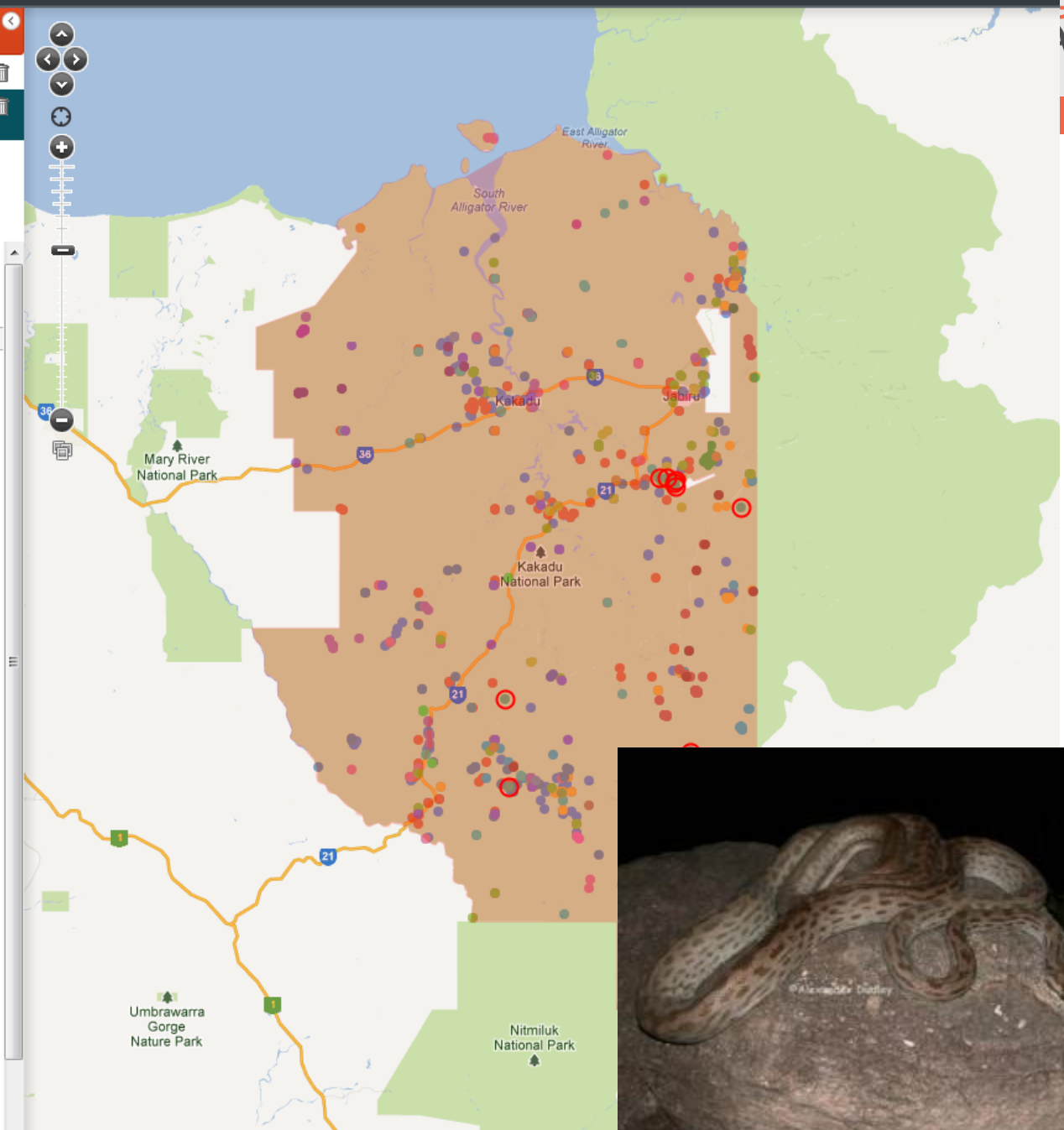
Display as: Density grid Points

Facet: Scientific name

Opacity: 60%

Size: 4

class	colour	count
<input type="checkbox"/> <i>Dasyurus hallucatus</i>	Blue	843
<input type="checkbox"/> <i>Geophaps (Geophaps) smithii</i>	Orange	390
<input type="checkbox"/> <i>Zyzomys maini</i>	Yellow	189
<input type="checkbox"/> <i>Hibiscus brennani</i>	Green	88
<input type="checkbox"/> <i>Monochoria hastata</i>	Purple	81
<input type="checkbox"/> <i>Amytomis (Amytomis) woodwardi</i>	Cyan	64
<input type="checkbox"/> <i>Varanus panoptes</i>	Light Blue	63
<input type="checkbox"/> <i>Varanus mertensi</i>	Light Green	62
<input type="checkbox"/> <i>Lithomyrtus linariifolia</i>	Red	60
<input type="checkbox"/> <i>Erythrura (Chloebeia) gouldiae</i>	Light Purple	56
<input type="checkbox"/> <i>Ardeotis australis</i>	Light Purple	48
<input type="checkbox"/> <i>Dromaius novaehollandiae</i>	Light Green	44
<input type="checkbox"/> <i>Conilurus penicillatus</i>	Light Green	35
<input type="checkbox"/> <i>Erythroriorchis radiatus</i>	Purple	26
<input type="checkbox"/> <i>Epthianura (Aurepthianura) crocea tunneyi</i>	Orange	19
<input type="checkbox"/> <i>Hipposideros inornata</i>	Dark Red	12
<input type="checkbox"/> <i>Lucasium occultum</i>	Dark Purple	12
<input checked="" type="checkbox"/> <i>Morelia oenpelliensis</i>	Dark Green	10
<input type="checkbox"/> <i>Tyto (Megastrix) novaehollandiae kimberli</i>	Light Blue	9
<input type="checkbox"/> <i>Acacia sp. Graveside Gorge (V.J. Levitzke 806)</i>	Dark Blue	8
<input type="checkbox"/> <i>Ipomoea polpha subsp. latzii</i>	Brown	7
<input type="checkbox"/> <i>Isodon auratus</i>	Light Green	4
<input type="checkbox"/> <i>Malaxis latifolia</i>	Pink	3
<input type="checkbox"/> <i>Freycinetia excelsa</i>	Pink	2
<input type="checkbox"/> <i>Cycas armstrongii</i>	Brown	1
<input type="checkbox"/> <i>Glyphis glyphis</i>	Light Green	1
<input type="checkbox"/> <i>Mesembriomys macrurus</i>	Light Blue	1
<input type="checkbox"/> <i>Rattus sordidus</i>	Light Green	1
<input type="checkbox"/> <i>Rostratula australis</i>	Light Green	1
<input type="checkbox"/> <i>Utricularia dunstaniae</i>	Dark Green	1

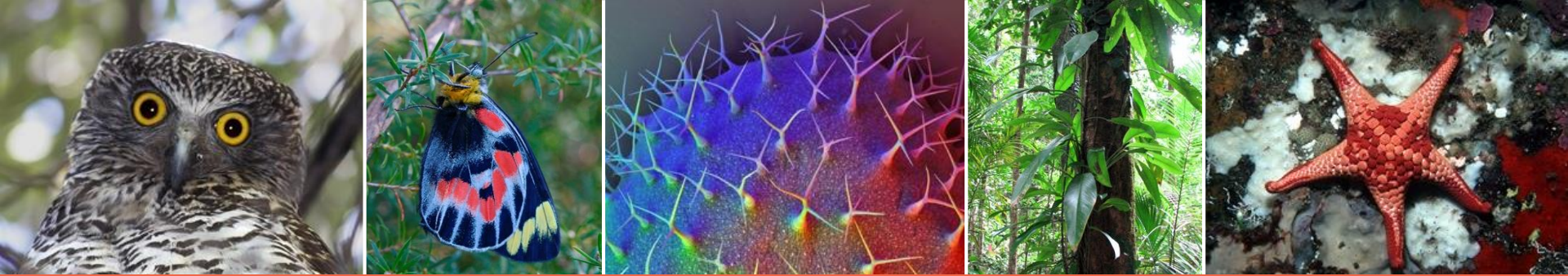


We are specifically not a digitisation initiative –
Although we want to help people to digitise,
And we're where you come when you have digitised
data.

So let's talk about digitisation

Digitisation is good

Doing something with digitised information is better



www.ala.org.au

A virtual natural history museum



ATLAS OF **LIVING**
AUSTRALIA
sharing biodiversity knowledge

NCRIS

National Research
Infrastructure for Australia

An Australian Government Initiative

Digitising Australian collections

Imagine being able to examine any biological specimen in any collection in Australia. You could see it, explore it, know where it came from, record information about its size and appearance, and have access to its genetic make-up.

Imagine having all the information from the biological collections in the form of computable data – so that you could explore questions about distribution, species interactions, change through time, and influence of environmental parameters.

Australia's rich collection information will be available to anyone, anywhere, anytime



Home → Australia's species → *Platycercus elegans*

Platycercus elegans (Gmelin, 1788)

Crimson Rosella

Record a sighting

Alerts

Name source

[Australian Faunal Directory](#)

Rank

Species

Data links

LSID

JSON / WMS / RDF

Species presence



Recorded In Australia

Conservation status



IUCN Least Concern

Overview

Gallery

Names

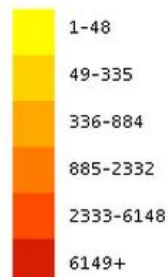
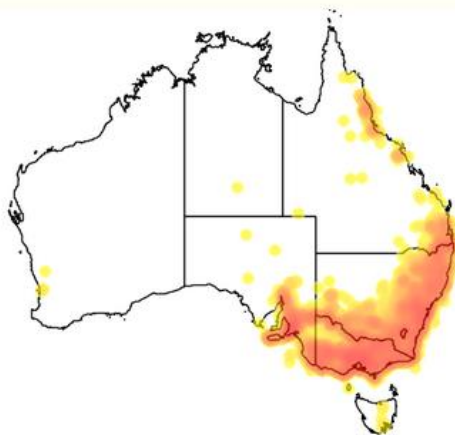
Classification

Records

Literature

Sequences

Occurrence records map



View records list

Map & analyse records



Source: Flickr EOL

Image by: Leo

Sounds



Source: Australian National Wildlife Collection

[View more details of this audio](#)

Description

Platycercus elegans is a medium-sized Australian parrot at 36 cm (14 in) long, much of which is tail. There are five subspecies, three of which are actually crimson. The red is replaced by yellow in the case of var. *flaveolus* and a mixture of red, orange and yellow in the Adelaide Rosella. Adults and juveniles generally show strikingly different colouration in south-eastern populations, with predominantly greenish-olive body plumage

Crimson Rosella

Name source

[Australian Faunal Directory](#)

Rank

Species

Data links

[LSID](#)

[JSON / WMS / RDF](#)

Species presence



Recorded In Australia

Conservation status



Least Concern

[Overview](#)

[Gallery](#)

[Names](#)

[Classification](#)

[Records](#)

[Literature](#)

[Sequences](#)

Type Images



Platycercus elegans fleureuensis
syntype | Museum Victoria

Specimen Images



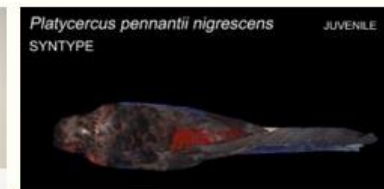
Platycercus elegans nigrescens
Australian Museum



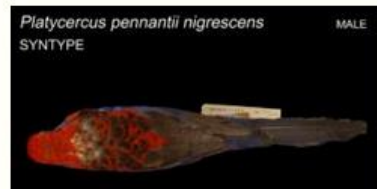
Platycercus elegans
Australian Museum



Platycercus elegans
Australian Museum



Platycercus elegans nigrescens
Australian Museum



Platycercus elegans nigrescens
Australian Museum



Platycercus elegans elegans
Museum Victoria



Platycercus elegans elegans
Museum Victoria



Name source

[Australian Faunal Directory](#)

Rank

Genus

Data links

[LSID](#)

[JSON / WMS / RDF](#)

Species presence



Recorded In Australia



Terrestrial Habitats

[Overview](#)

[Gallery](#)

[Names](#)

[Classification](#)

[Records](#)

[Literature](#)

[Sequences](#)

Type Images



Platycercus adscitus
neotype | Museum Victoria



Platycercus elegans fleurieuiensis
syntype | Museum Victoria



Platycercus eximius aureodorsalis
holotype | Museum Victoria

Specimen Images



Platycercus elegans filewoodi
HOLOTYPE
Australian Museum



Platycercus elegans
Australian Museum



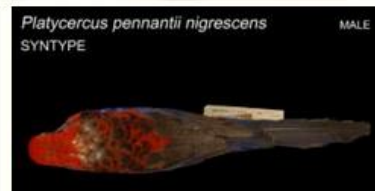
Platycercus elegans
Australian Museum



Platycercus venustus (Kuhl, 1820)
Australian Museum



Platycercus pennantii nigrescens
JUVENILE
SYNTYPE
Australian Museum



Platycercus pennantii nigrescens
MALE
SYNTYPE
Australian Museum



Platycercus diemenensis
HOLOTYPE
Australian Museum



Images



Platycercus eximius



Platycercus elegans



Platycercus elegans



Platycercus elegans



Platycercus elegans



Platycercus elegans



Platycercus elegans



Platycercus elegans



Platycercus elegans



Platycercus elegans



Platycercus eximius

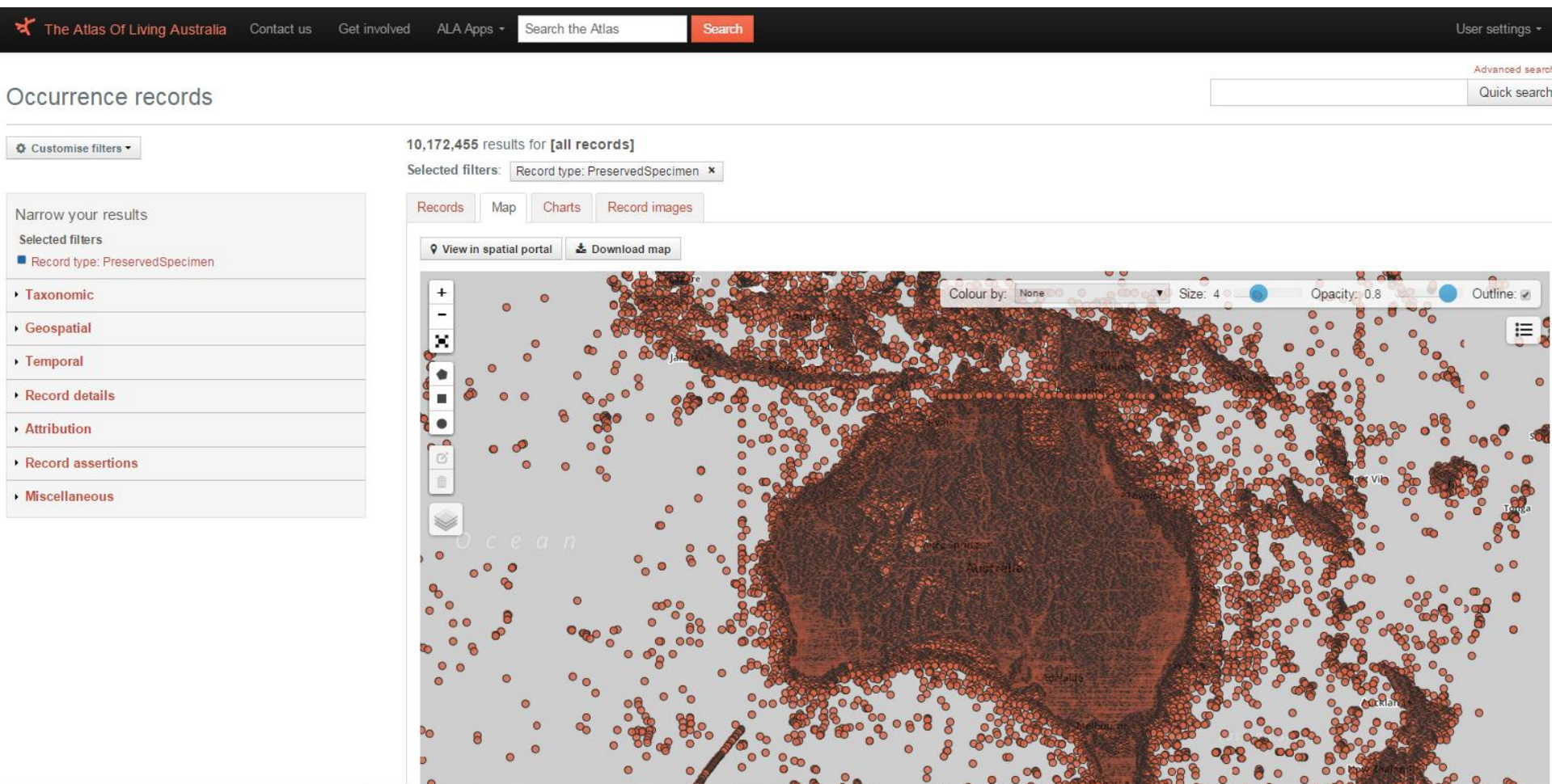


Platycercus



Collection data in the Atlas

Preserved specimens 10.17 million



The screenshot displays the Atlas of Living Australia web interface. At the top, the navigation bar includes the logo, 'The Atlas Of Living Australia', and links for 'Contact us', 'Get involved', and 'ALA Apps'. A search bar contains the text 'Search the Atlas' and a 'Search' button. On the right, there are links for 'User settings', 'Advanced search', and 'Quick search'.

The main content area is titled 'Occurrence records'. Below this, there is a 'Customise filters' button and a search result summary: '10,172,455 results for [all records]'. The selected filters are 'Record type: PreservedSpecimen'. Below the filters, there are tabs for 'Records', 'Map', 'Charts', and 'Record images', with 'Records' currently selected. There are also buttons for 'View in spatial portal' and 'Download map'.

The central part of the interface is a map of Australia, densely populated with small orange circular markers representing specimen records. The map includes a vertical toolbar on the left with various map controls (zoom, pan, etc.) and a horizontal toolbar at the top right with settings for 'Colour by: None', 'Size: 4', 'Opacity: 0.8', and 'Outline: [checked]'. A menu icon is visible in the top right corner of the map area.

On the left side of the interface, there is a 'Narrow your results' sidebar with a 'Selected filters' section showing 'Record type: PreservedSpecimen'. Below this, there are several expandable categories: 'Taxonomic', 'Geospatial', 'Temporal', 'Record details', 'Attribution', 'Record assertions', and 'Miscellaneous'.

Collection data in the Atlas

Collection images >53,000

Specimens images from Australia's Natural History collections

Images from Australian Natural History collections made available by the museums and herbaria of Australia. To view images from all collections, [click here](#).

South Australian Museum Terrestrial Invertebrate Collection

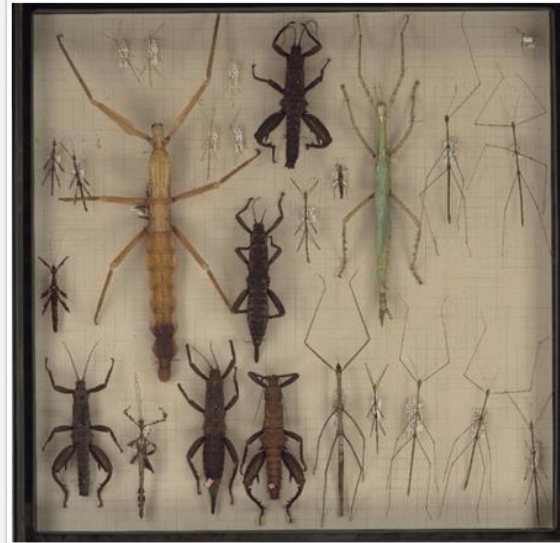
South Australian Museum



The collection has Australia-wide and Indo-Pacific representation, plus some world specimens for comparative purposes.

Australian National Insect Collection

Commonwealth Scientific and Industrial Research Organisation



Museum Victoria Ornithology Collection

Museum Victoria



The Ornithology Collection contains more than 70 000 specimens of mounted birds, skins, skeletons, eggs and specimens preserved in alcohol. One of the largest Australian avian collections, primarily of Australian species and with a strong Victorian emphasis, it includes material from a broad spectrum of the world's avifauna and represents in excess of 4000 species.

Collection data in the Atlas

Collection images >53,000



The Atlas Of Living Australia

Contact us

Get involved

ALA Apps ▾

Search the Atlas

Search

User settings ▾

Home → Specimen images → all collections

Specimen images from all collections

Clear filters

Taxonomy

Kingdom

ANIMALIA (52503)

Animalia (4)

Plantae (512)

Types

allotype (126)

cotype (17)

holotype (4378)

lectotype (256)

neotype (24)

paralectotype (28)

paratypes (242)

syntype (1815)

type (691)

all values

Sex

53562 images are available.



Glyphipterix macrantha



Glyphipterix polychroa



Mimodoxa dryina



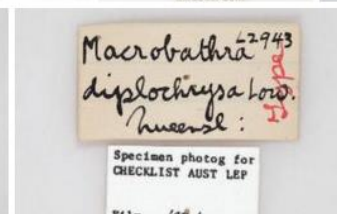
Mimodoxa tricommatica



Macrobathra drosera



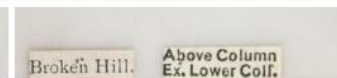
Macrobathra epimela



Macrobathra diplochrysa



Zaphanaula hemileuca



Collection Based Images

- >53,000 collection based images
 - Specimens
 - Herbarium sheets
 - Whole drawer images
 - Type specimens
 - Skulls
- ?Coming soon
 - X-rays (CSIRO Australian National Fish Collection)
 - 3D images
 - CT/MicroCT Scans
 - SEM's of parts
 - Morphological characters

Finding images in the Atlas

- By taxon
 - Species
 - Genus
 - Family
- By collection



Anthela asciscens
Type: holotype
South Australian Museum

[View details of this record](#)

◀ ▶ image 76 of 120

✕

Collection data in the Atlas

Collection images >53,000

Specimens images from Australia's Natural History collections

Images from Australian Natural History collections made available by the museums and herbaria of Australia. To view images from all collections, [click here](#).

South Australian Museum Terrestrial Invertebrate Collection

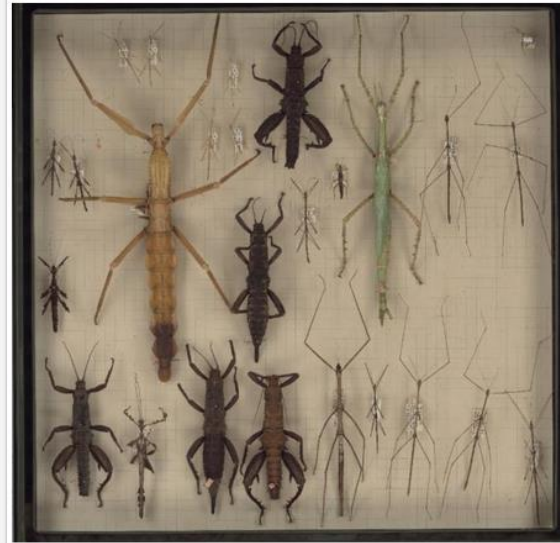
South Australian Museum



The collection has Australia-wide and Indo-Pacific representation, plus some world specimens for comparative purposes.

Australian National Insect Collection

Commonwealth Scientific and Industrial Research Organisation



Museum Victoria Ornithology Collection

Museum Victoria



The Ornithology Collection contains more than 70 000 specimens of mounted birds, skins, skeletons, eggs and specimens preserved in alcohol. One of the largest Australian avian collections, primarily of Australian species and with a strong Victorian emphasis, it includes material from a broad spectrum of the world's avifauna and represents in excess of 4000 species.

Viewing images in the Atlas

[Home](#) → [Australia's species](#) → *Castiarina pseudasilida*

Castiarina pseudasilida (Barker, 1983)

Name source

[Australian Faunal Directory](#)

Rank

Species

Data links

[LSID](#)

[JSON / WMS / RDF](#)

Species presence



Recorded In Australia



Terrestrial Habitats

[Overview](#)

[Gallery](#)

[Names](#)

[Classification](#)

[Records](#)

[Literature](#)

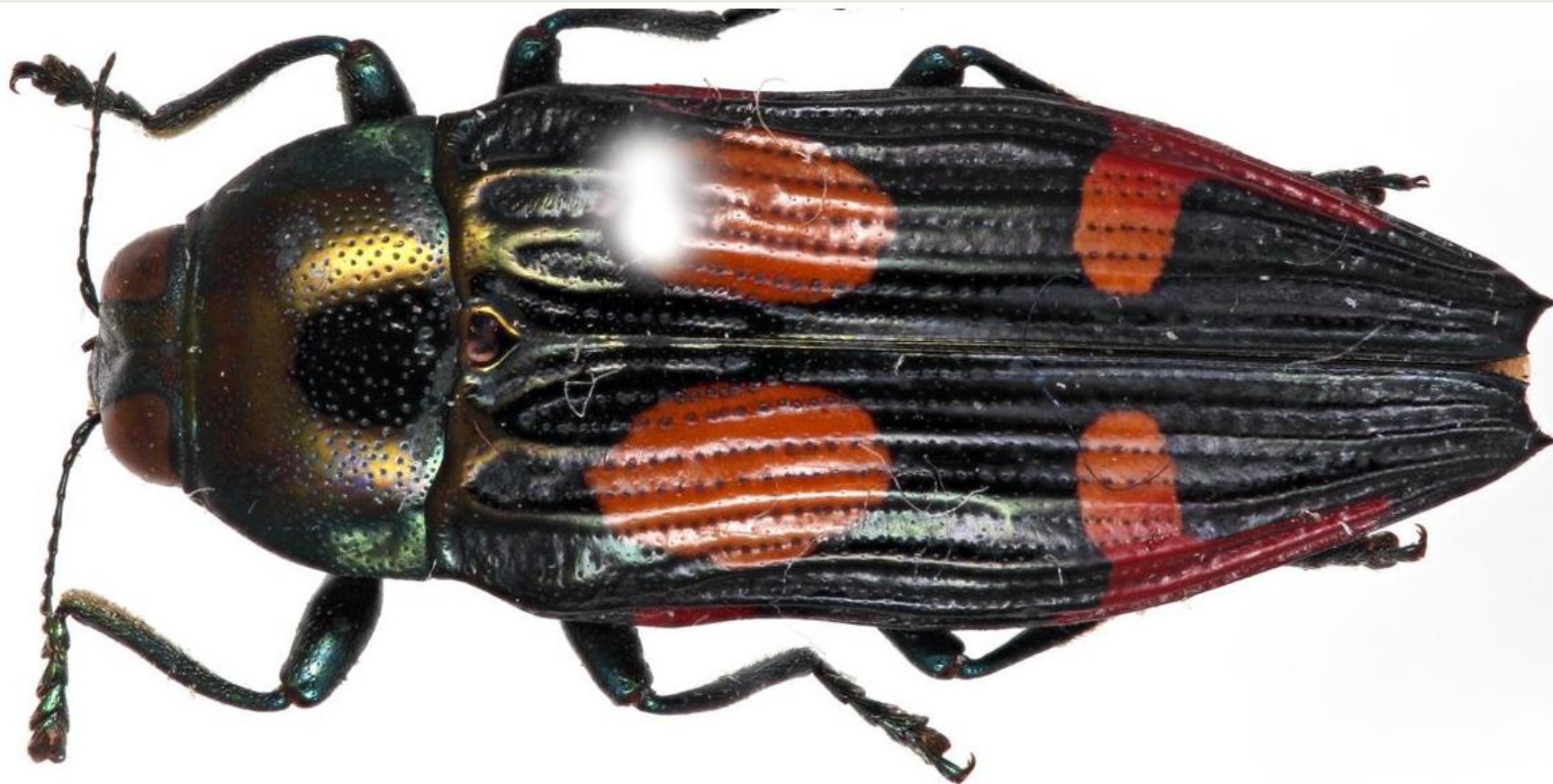
[Sequences](#)

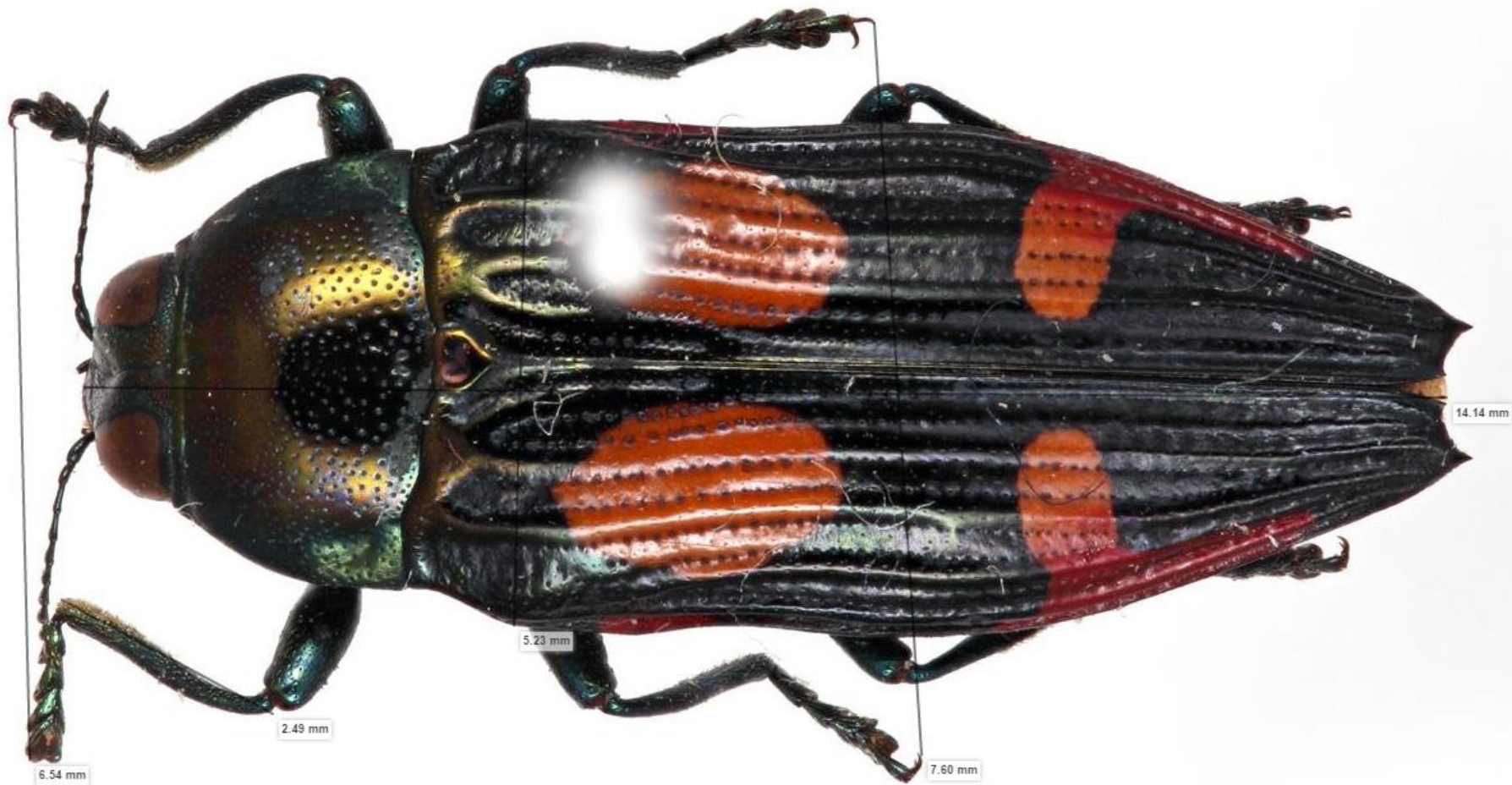
Type Images



Castiarina pseudasilida
holotype | South Australian
Museum

Show subimages





5 mm

Home → Australia's species → LIBELLULIDAE

LIBELLULIDAE

Common Skimmers

Record a sighting Alerts

Name source

[Australian Faunal Directory](#)

Rank

Family

Data links

LSID

JSON / WMS / RDF

Species presence



Recorded In Australia



Terrestrial Habitats



Terrestrial Aquatic Habitats

Overview

Gallery

Names

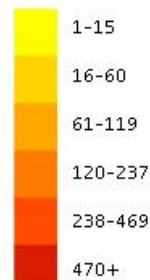
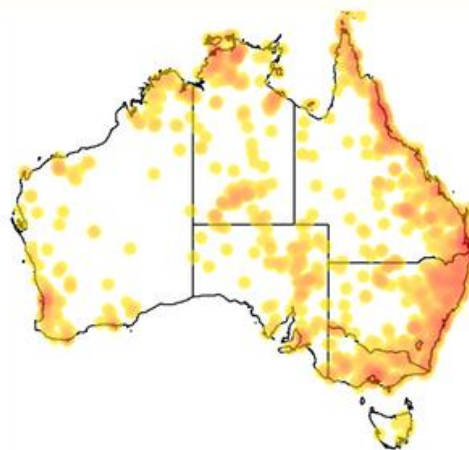
Classification

Records

Literature

Sequences

Occurrence records map



View records list

Map & analyse records

View images of species for LIBELLULIDAE



Libellula - Libellulidae
Allysioides perhegri
1991



LIBELLULIDAE

Common Skimmers

Record a sighting

Alerts

Name source

[Australian Faunal Directory](#)

Rank

Family

Data links

LSID

JSON / WMS / RDF

Species presence



Recorded In Australia



Terrestrial Habitats



Terrestrial Aquatic Habitats

Overview Gallery Names Classification Records Literature Sequences

Specimen Images



Brachydiplax denticauda
Commonwealth Scientific and Industrial Research Organisation



Trapezostigma stenolaba
Commonwealth Scientific and Industrial Research Organisation



Trapezostigma eurybia
Commonwealth Scientific and Industrial Research Organisation



Trapezostigma stenolaba
Commonwealth Scientific and Industrial Research Organisation



Trapezostigma eulia
Commonwealth Scientific and Industrial Research Organisation



Trapezostigma stenolaba
Commonwealth Scientific and Industrial Research Organisation



Trapezostigma virginia
Commonwealth Scientific and Industrial Research Organisation



Trapezostigma aquililia
Commonwealth Scientific and Industrial Research Organisation



Trapezostigma liberata
Commonwealth Scientific and Industrial Research Organisation



Trapezostigma basilaris
Commonwealth Scientific and Industrial Research Organisation



Trapezostigma lacerata
Commonwealth Scientific and Industrial Research Organisation



Trapezostigma transmarina
Commonwealth Scientific and Industrial Research Organisation



Trapezostigma loewi
Commonwealth Scientific and Industrial Research Organisation



Trapezostigma roseleni
Commonwealth Scientific and Industrial Research Organisation



Trapezostigma euroyele
Commonwealth Scientific and Industrial Research Organisation



[Home](#) » Image details 4845589

Image details 4845589

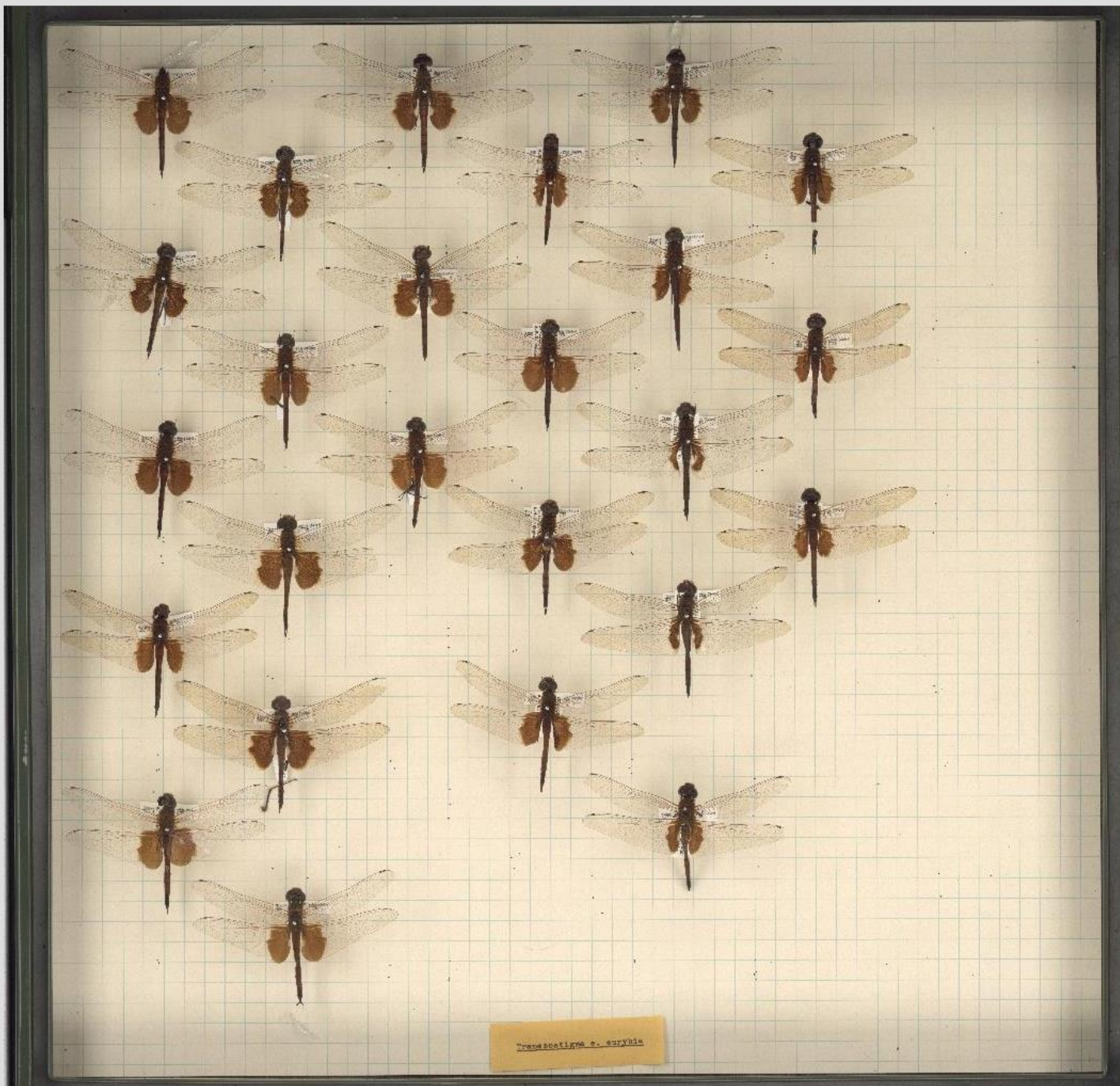


Tags

Thumbnails

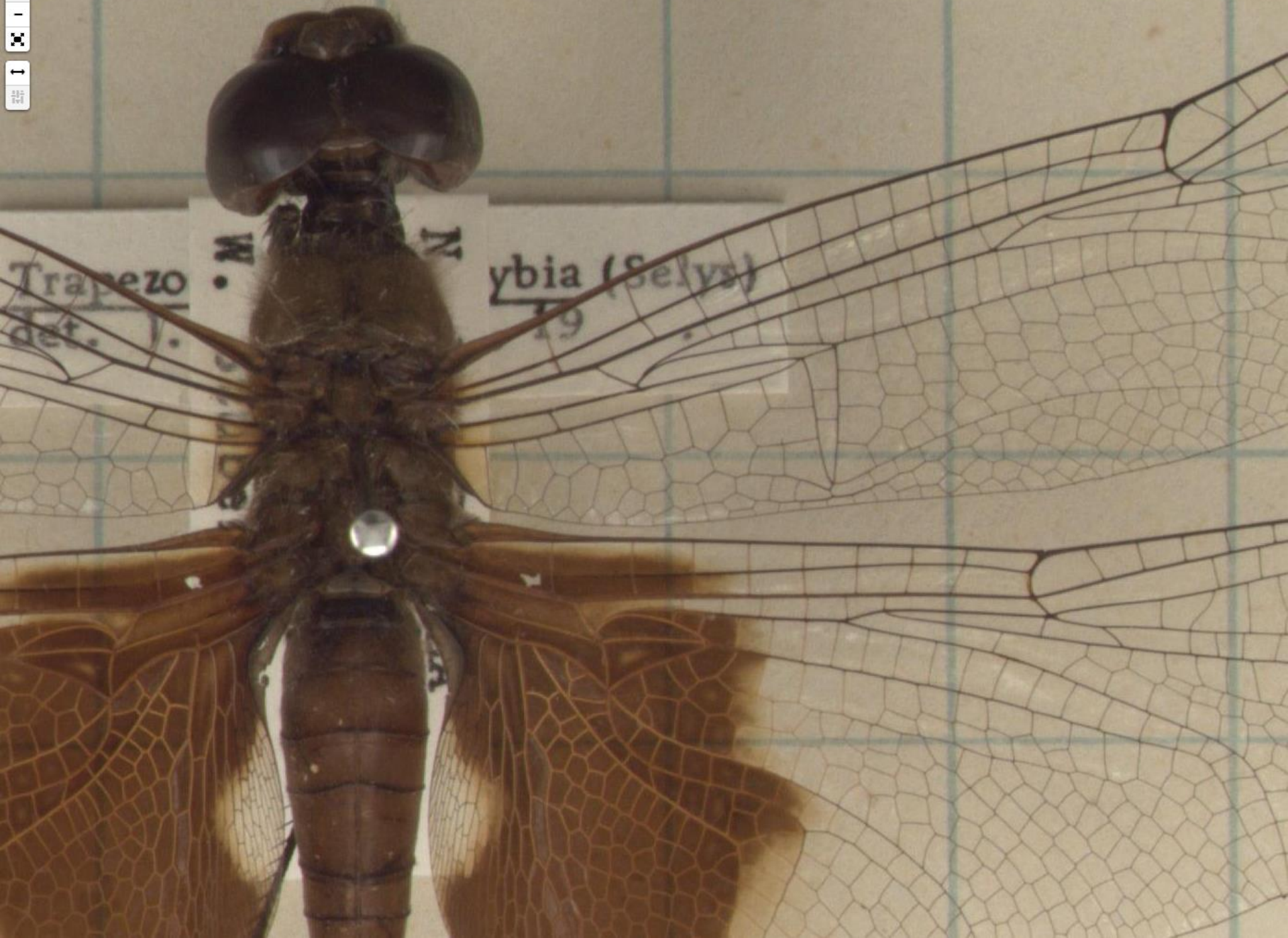


Image properties	Embedded	User Defined Metadata	System
Image Identifier	e348bb71-8295-428b-90c1-d9ef6e4c92f0		
Filename	dr441 8b27dce0-f75e-45fc-8c6f-0e27630addbf 2074371.jpeg		
Dimensions (w x h)	16830 x 16249		
File size	29.3 MB		
Date uploaded	20 May, 2014 05:30:14		
Uploaded by	<Unknown>		
Date taken/created	20 May, 2014 05:30:14		
Mime type	image/jpeg		
Zoom levels	8		
Linear scale	0.03263707571801567 mm per pixel ✕		
Image URL	http://images.ala.org.au/store/0/f/2/9/e348bb71-8295-428b-90c1-d9ef6e4c92f0/original		
MD5 Hash	e2a4221a37a8e7eec2680d7c5356bee0		
SHA1 Hash	a2a5bdffa6184ac2e3384269feee62f0d4bd428f		
Size on disk (including all artifacts)	63.3 MB		
Sub-images	<ul style="list-style-type: none"> dr441 8b27dce0-f75e-45fc-8c6f-0e27630addbf 2074371.jpeg_subimage_1 ⓘ dr441 8b27dce0-f75e-45fc-8c6f-0e27630addbf 2074371.jpeg_subimage_2 ⓘ dr441 8b27dce0-f75e-45fc-8c6f-0e27630addbf 2074371.jpeg_subimage_3 ⓘ dr441 8b27dce0-f75e-45fc-8c6f-0e27630addbf 2074371.jpeg_subimage_4 ⓘ dr441 8b27dce0-f75e-45fc-8c6f-0e27630addbf 2074371.jpeg_subimage_5 ⓘ 		
Harvested as occurrence record?	No		



Tramestigma c. eryoides



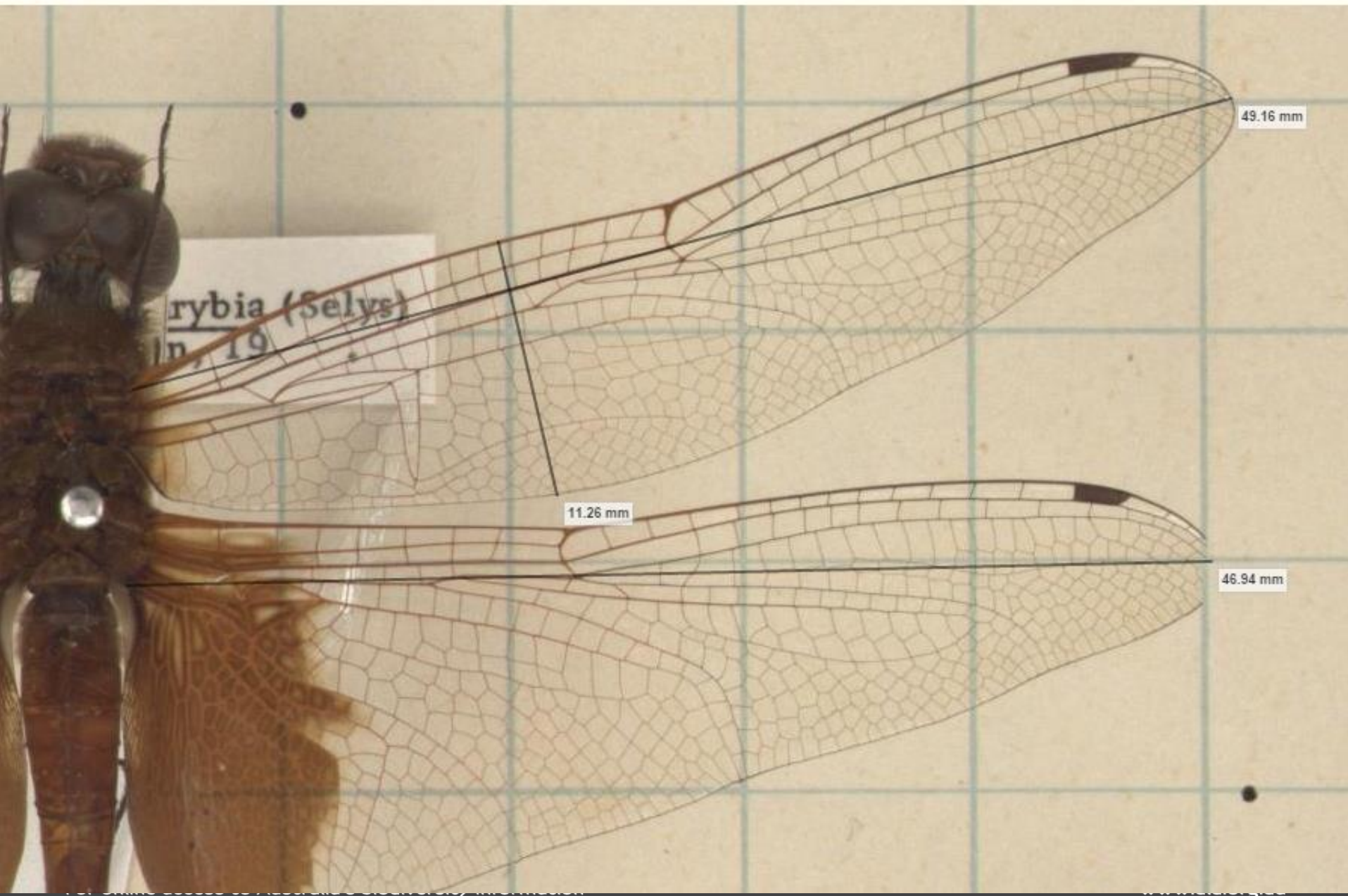


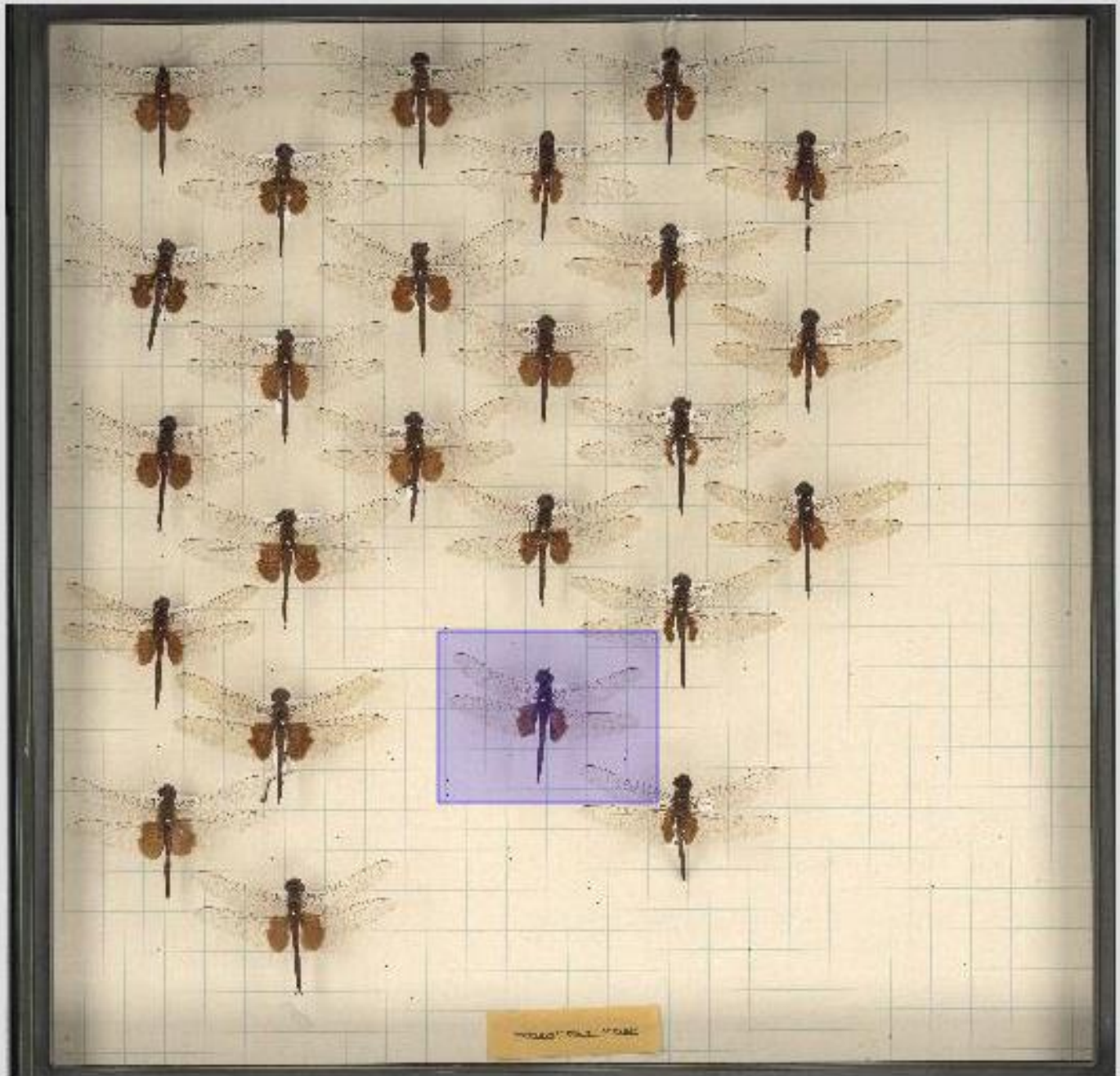
Trapezo
det. J.

M N

ybia (Selys)
19





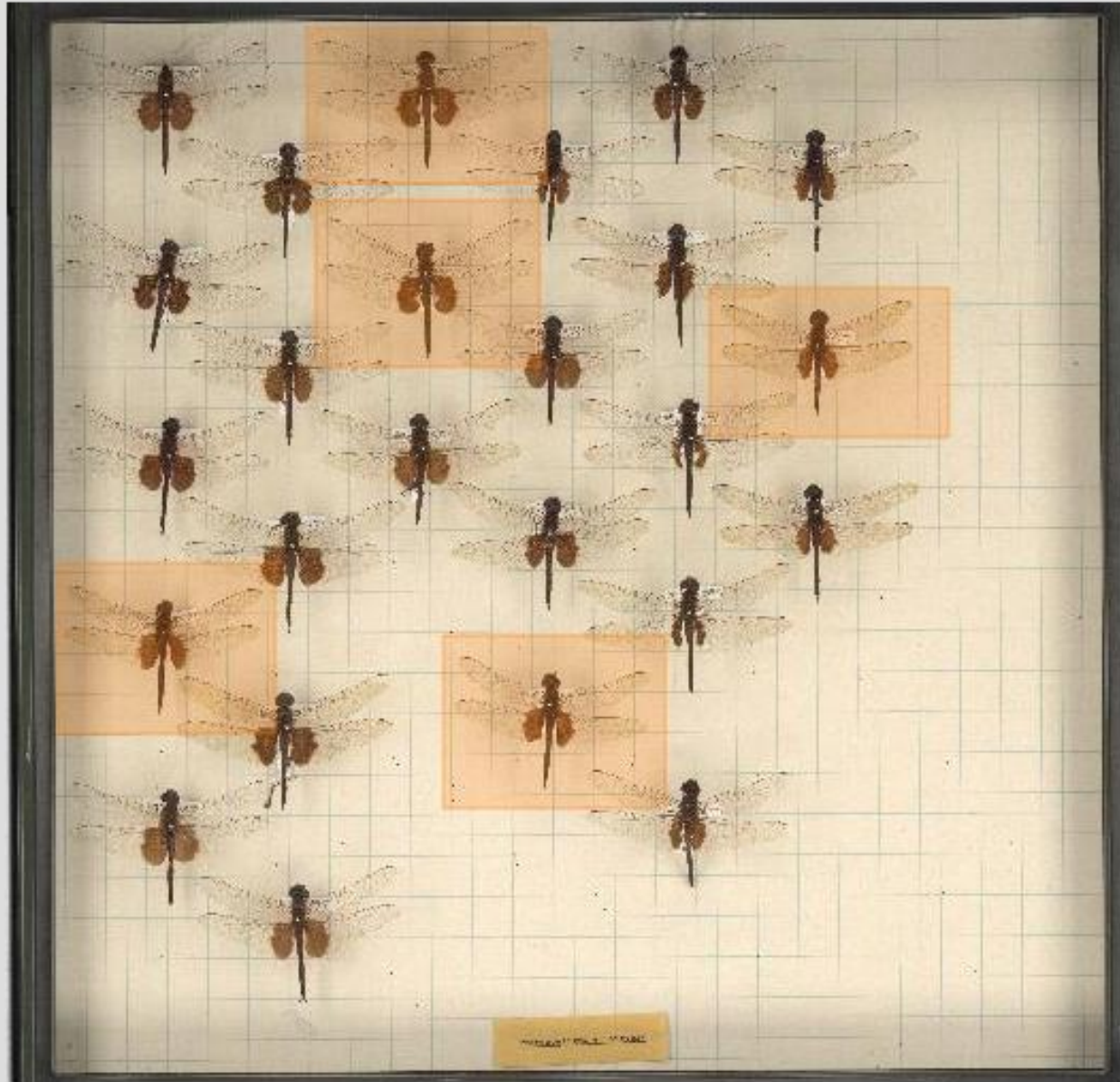


[Home](#) » [Image Details](#) » Viewing Image 4845589

Create subimage

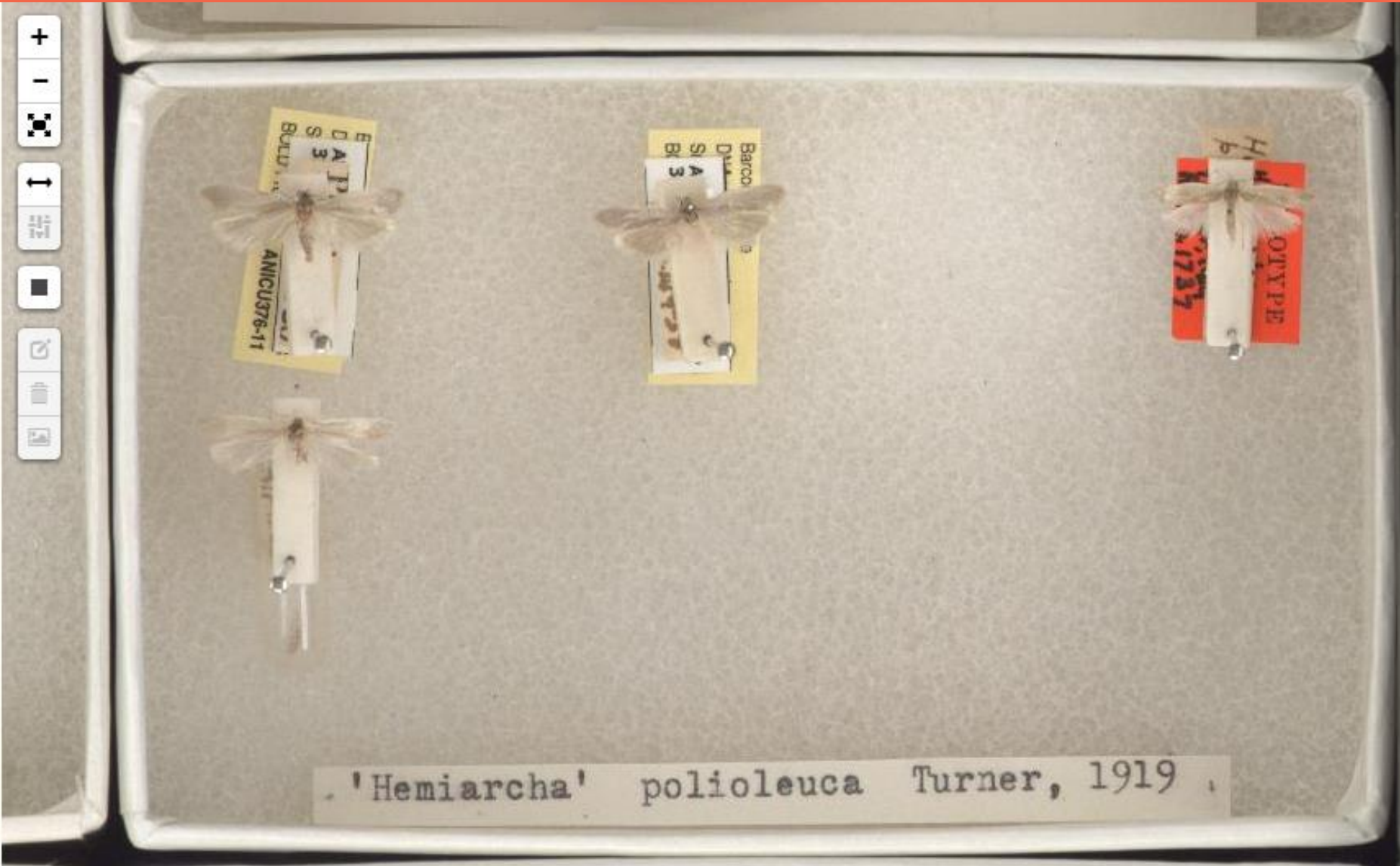
X Show subimages

Show subimages



Show subimages





E
D A P
S 3
Blu

ANICU376-11

Barco
D
S I A
Bl 3

H
p
OLYPE
1737

'Hemiarcha' polioleuca Turner, 1919

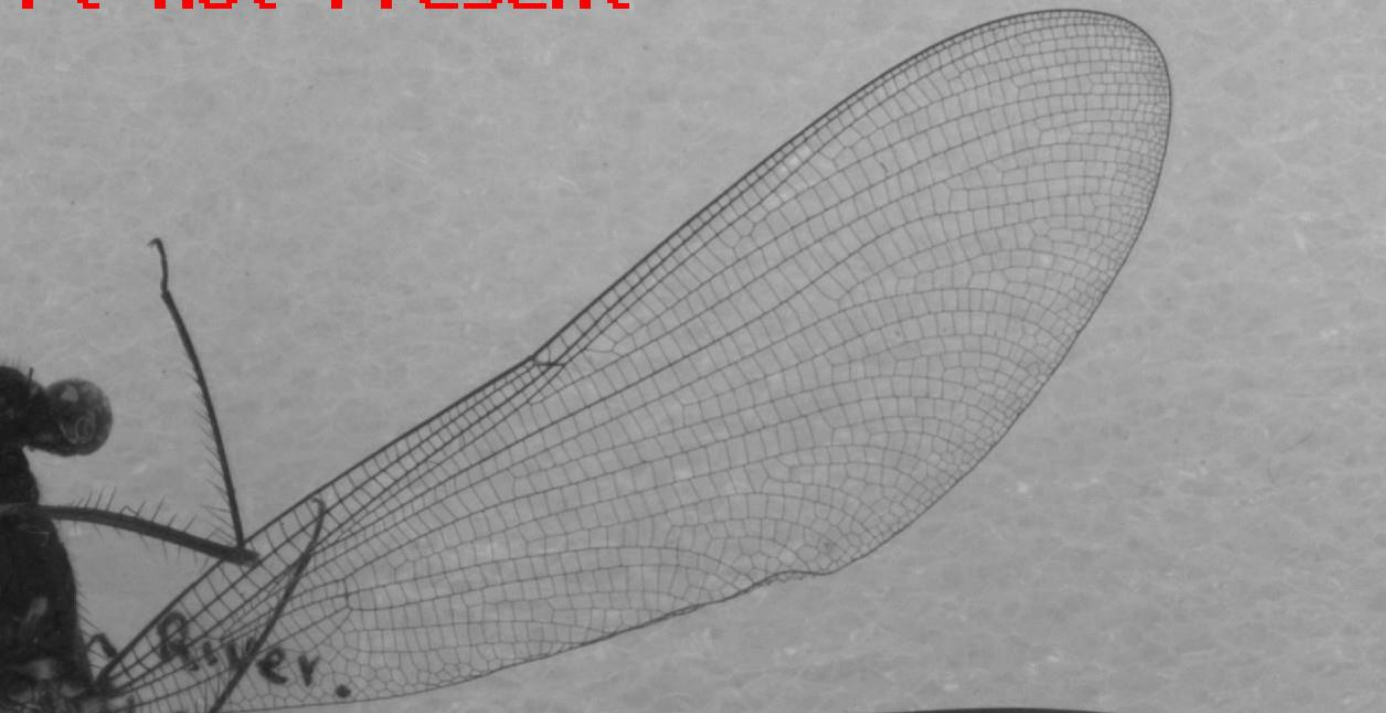
[Home](#) » [Image Details](#) » Viewing Image 4848778

Show subimages

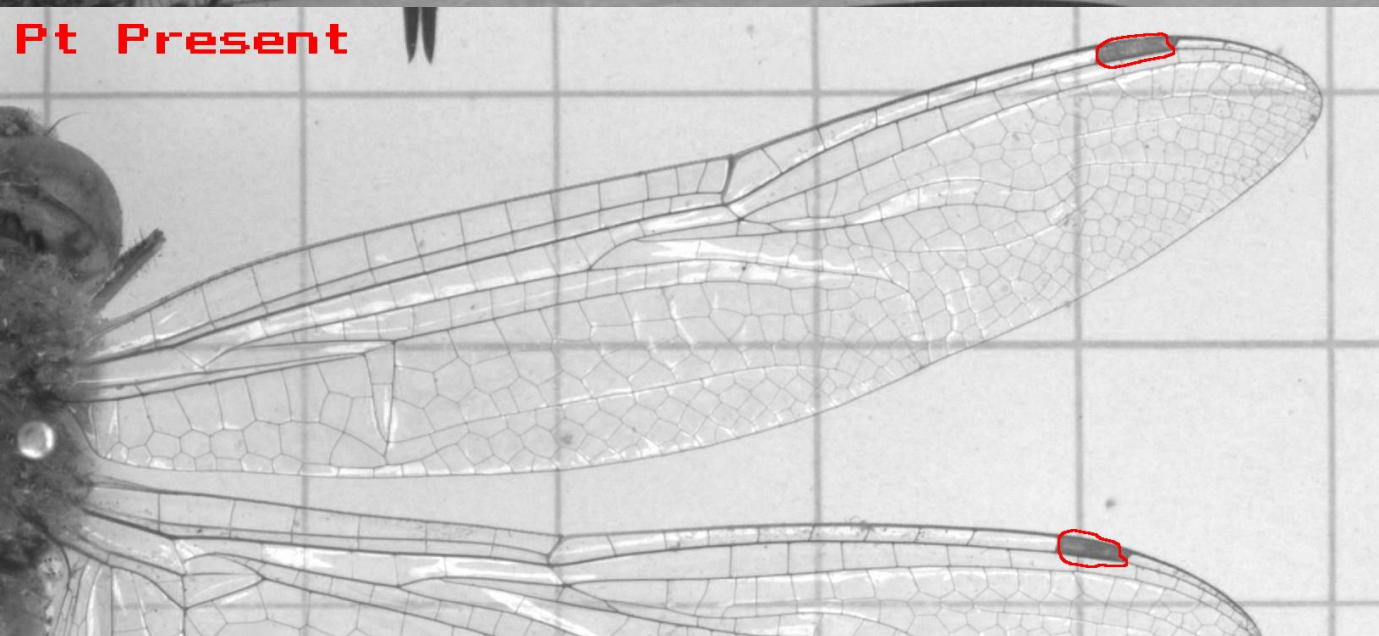


Imagine having all the information from the biological collections in the form of computable data – so that you could explore questions about distribution, species interactions, change through time, and influence of environmental parameters.

Pt Not Present



Pt Present



Automated Feature Extraction

CSIRO

X-cutting

DPF

Computer Vision

North Ryde

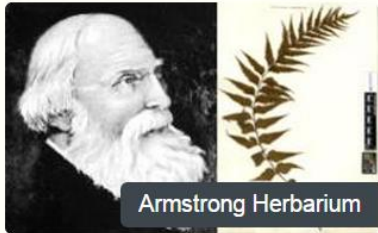
The volunteer portal

DigiVol Expeditions Institutions Tutorials Forum Contact Us How can I volunteer? About DigiVol

DigiVol

Volunteers building knowledge and communities through digitising collections

Virtual expedition of the day



Armstrong Herbarium

ALLAN HERBARIUM (CHR)
Armstrong Herbarium

Armstrong Herbarium

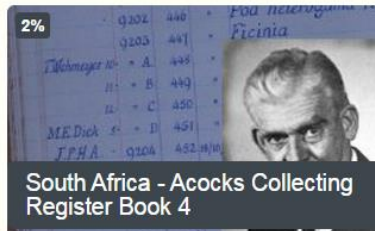
Start transcribing [a](#) [A](#)

More expeditions

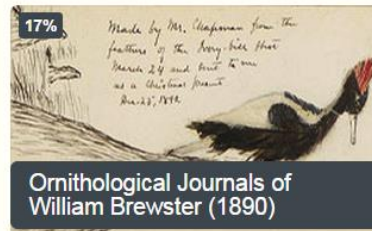
[View all](#)



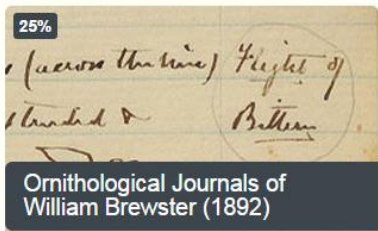
Australian Museum Thornton Diaries Expedition - Diary of Chile



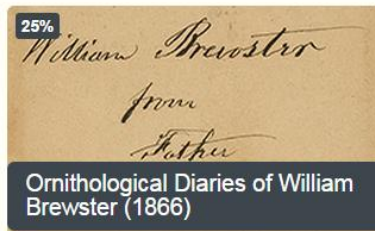
South Africa - Acocks Collecting Register Book 4



Ornithological Journals of William Brewster (1890)



Ornithological Journals of William Brewster (1892)



Ornithological Diaries of William Brewster (1866)



Smithsonian US Herbarium - Dalbergia around the world

Honour Board

Day Tripper

Baz Walter 3

Weekly Wonder

Baz Walter 3

Monthly Maestro

Megan Edey 1

DigiVol Legend

Megan Edey 2

[View my tasks](#)

Expedition stats

109507 tasks of 116409 completed
698 volunteer [transcribers](#).

News

01 Sep 2014

DigiVol sets new records

August was the most productive

Can volunteers extract information?

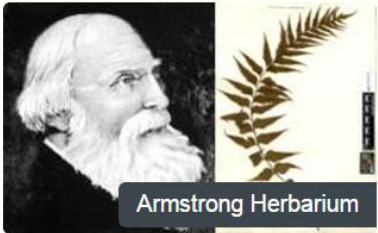
DigiVol Expeditions Institutions Tutorials Forum Contact Us How can I volunteer? About DigiVol

DigiVol

Volunteers building knowledge and communities through digitising collections

Virtual expedition of the day

Honour Board



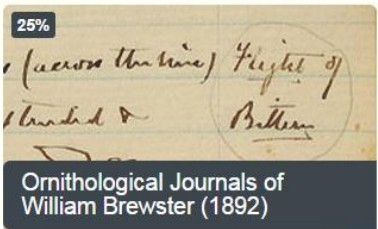
Armstrong Herbarium

More expeditions [View all](#)



0%

Australian Museum Thornton Diaries Expedition - Diary of Chile



25%

Ornithological Journals of William Brewster (1892)



42%

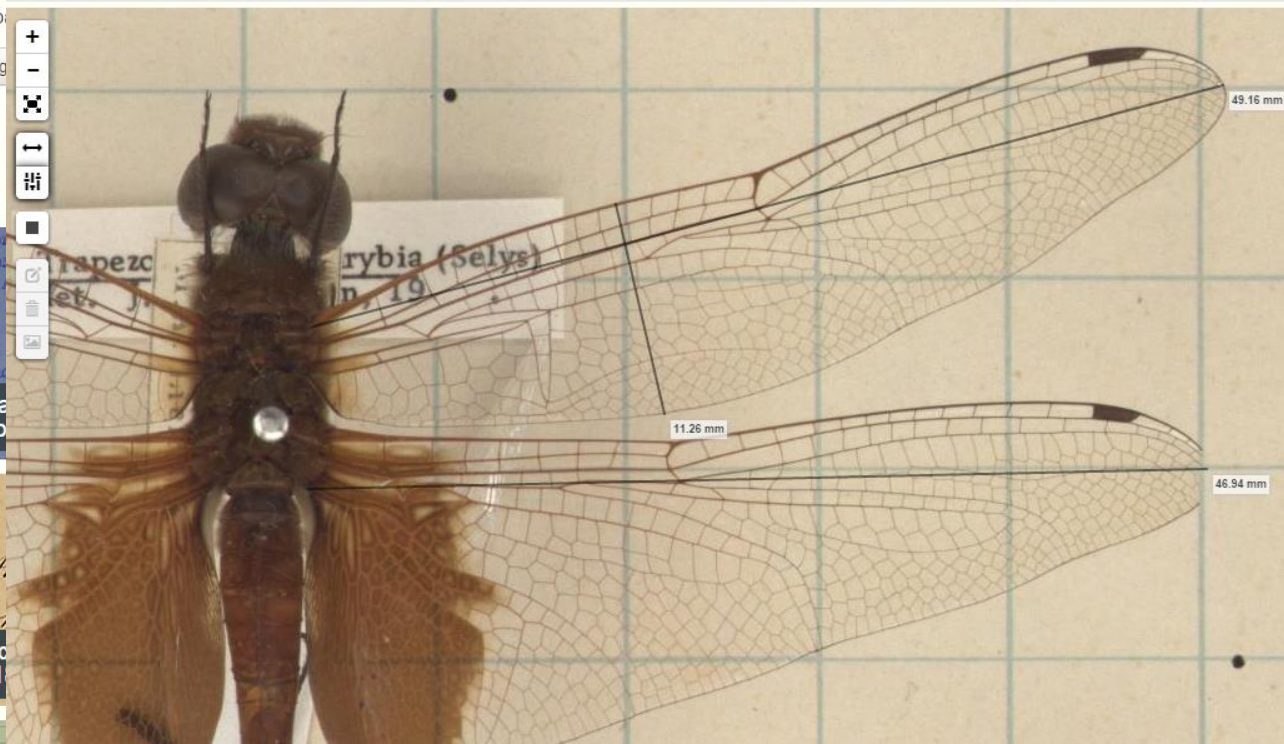
ALLAN HERBARIA

Armstrong

Show subimages

Armstrong Herbarium

[Home](#) » [Image Details](#) » Viewing Image 4845589



49.16 mm

11.26 mm

46.94 mm

2%

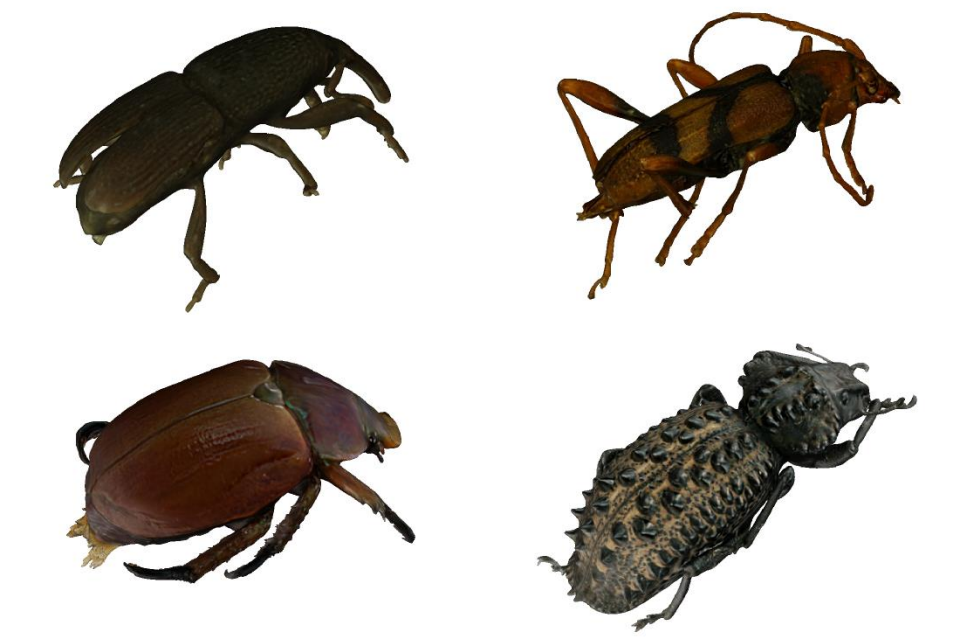
South Africa Register Book

25%

Ornithological Journals of William Brewster (1892)

55%

Creating 3D images

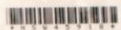


Creating 3D Images





NSW
LOAN: 096/62



NSW
LOAN: 099/49



NSW473233



Mr Briggs paddock
7/6/43

CONFIRMAVIT
Seen for Flora of Australia
Det. A.E. Holland (BRD) 21/11/1998

Seen for Flora of Australia ASTERACEAE
Hemistegia lyrata (Bunge) Fisch. & C.A. Mey.
Det. A.R. Bean (BRD) Oct. 2000

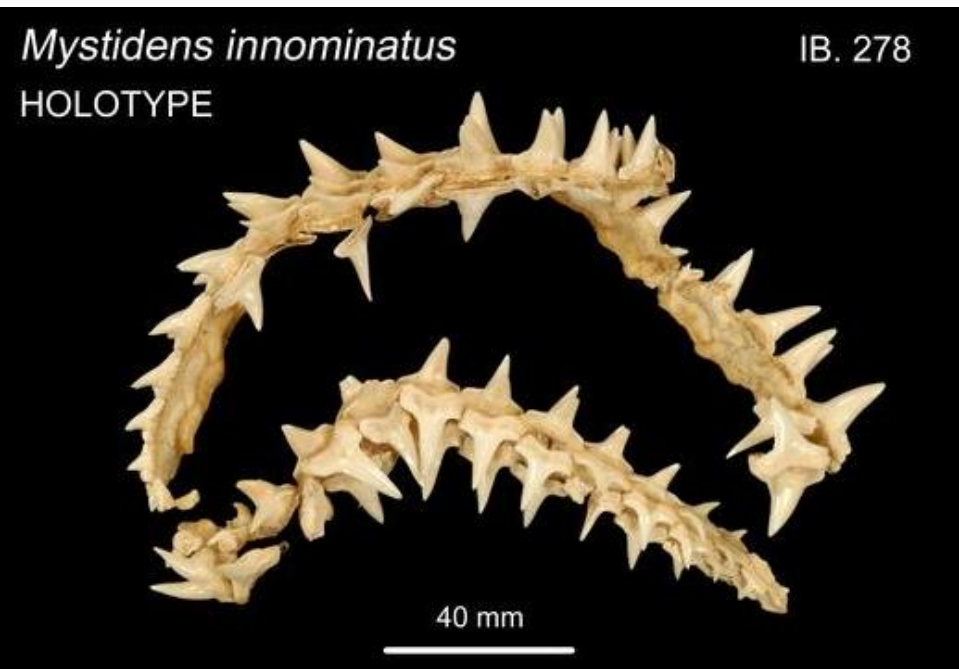
NSW DATA
DATABASE

West side of the gulf

No. 42975
Protoparce Cunninghamhamii
[From map of route in Barrowmow + Cramp,
School Atlas, this colln. would date from 1944-5]
Dr. Leckhardt.

Briggs Creek and
paddock
11/6/43

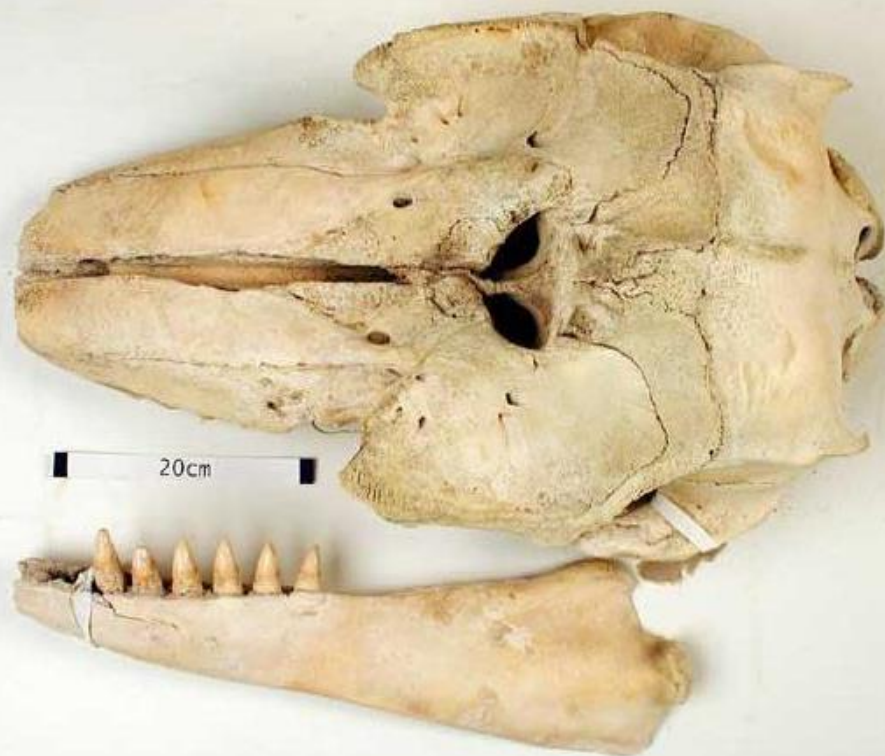
NSW473233
Synnotaxis Au-
malasica
Saussurea carthamoides, Benth.
Dr. Leckhardt.
(27° 10' S 152° 45' E)

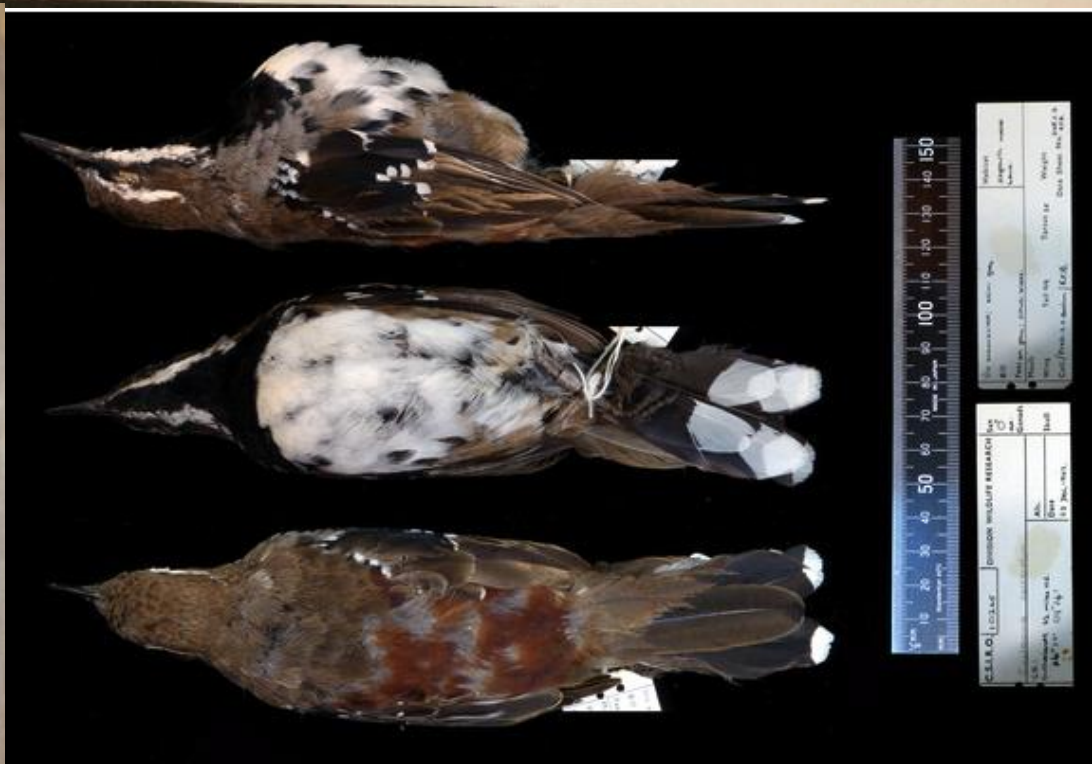
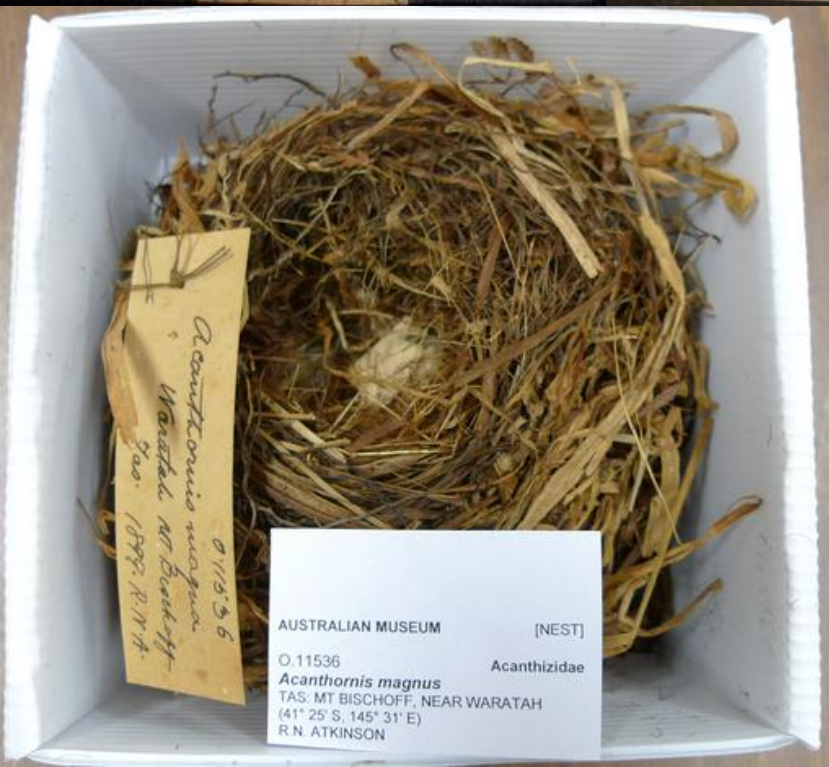


Syntype

Arctocephalus tasmanicus

TMAG A808





Syntype
Trophon squamosissima

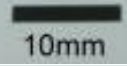


5 mm

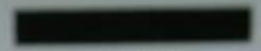
TMAG E164



Calliostoma bellatrix
Holotype NTM P017143



10mm

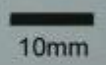


10mm



Pyrene morisoni
Holotype NTM P016900

Cymbiola bairdi
Holotype NTM R008918



10mm



Fig. 1



5 mm



2 mm

Fig. 1

Leptothyra arenacea
Holotype

F 594



1 mm

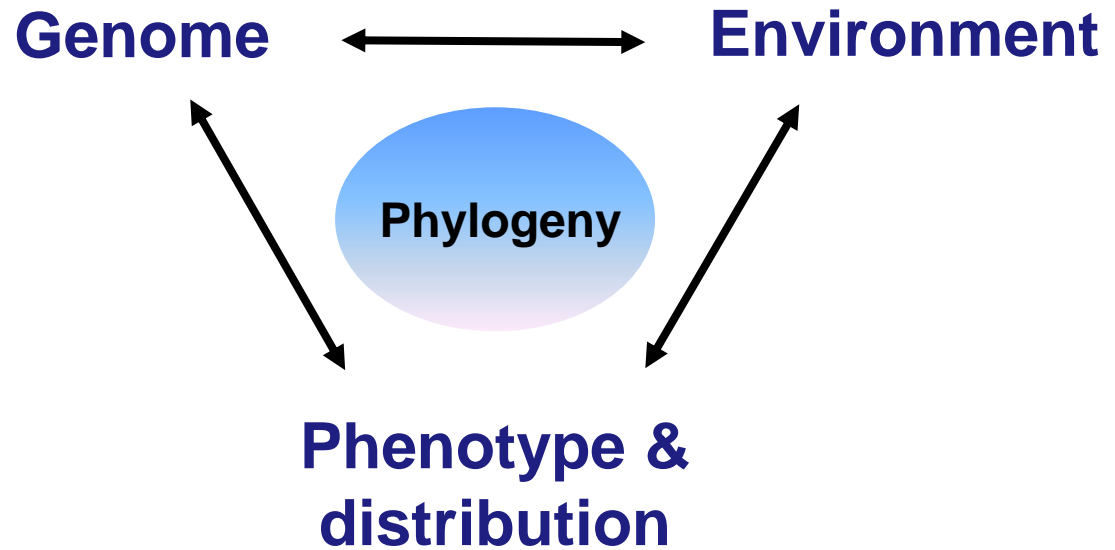
The Atlas environment

- Bringing it all together in integrated framework
 - Distribution, Images, DNA sequences, Trait data
 - Mapping and analysis tools
 - Dynamic publication
 - eFlora's and eFaunas
 - Education and outreach



The future of museums and biodiversity research

- Discovering and understanding biodiversity
- Incorporating evolutionary dynamics
- Protecting diversity in a changing world
- Sharing knowledge



Accelerated Biodiversity Assessment

- RAPID **BIODIVERSITY**
 - Discovery
 - Documentation
 - Analysis



How can the Atlas help you?

How can we embed the Atlas in your daily workflow - as researchers or collection managers?

What can we do to help you?

What would you like in the future?

- Better imaging tools and workflow
- Virtual taxonomy
- eFloras / eFaunas
- Phylojive (phylogeny visualisation and explorer)
- Trait bank
- Species interactions
- Biosecurity
- Citizen Science (volunteers)
- A distributed, virtual Natural History Museum for Australia



Flora of Australia

Acacia pubifolia

Edit JSON

Description

Shrub or tree to 8 m high, single-stemmed. Bark rough to 'ironbark'-type, black. Branchlets angular, brown or orange-brown, sometimes slightly pruinose, velvety-pubescent; ridges not prominent. Phyllodes narrowly elliptic, elliptic or narrowly obovate, straight, 2–8.5 (–10) cm long, 8–30 mm wide, silvery, velvety-pubescent, later puberulous, with 1–3 slightly prominent main nerves reaching apex and base; minor nerves 5 or 6 per mm, not anastomosing; gland 1, small, basal, hairy. Spikes almost sessile, 2–5 cm long, golden. Flowers 5-merous; calyx 0.5–0.9 mm long, truncate or dissected to c. 1/6, white-pubescent, papillose at apices; corolla 1.6–1.8 mm long, dissected to 1/2–5/8, glabrous; ovary villous. Pods linear, slightly constricted between and slightly raised over seeds, 3–8 cm long, 3–4 mm wide, chartaceous, greyish, longitudinally nerved, pubescent. Seeds longitudinal, oblong-elliptic, 4–4.5 mm long, black; pleurogram indistinct, narrowly U-shaped.

— Contributed by Dr M.D.Tindale and Dr P.G.Kodala with the assistance of M.Bedward, S.J.Davies, C.Herscovitch, D.A.Kelch and/or D.A.Morrison
— Edited by Dave Martin

Distribution

Occurs in the Darling Downs District, south-eastern Qld, from Glen Aplin to Wallangarra, common near Wyberba, S of Stanthorpe; less common in N.S.W. where it is recorded from Torrington State Recreation Area (NW of Emmaville) and near Warrabah National Park (c. 60 km W of Armidale).

— Contributed by Dr M.D.Tindale and Dr P.G.Kodala with the assistance of M.Bedward, S.J.Davies, C.Herscovitch, D.A.Kelch and/or D.A.Morrison

Habitat

Grows on rocky granite hillsides, in sandy, stony or loam soil in eucalypt-scrub woodland or Eucalyptus - Callitris forest.

— Contributed by Dr M.D.Tindale and Dr P.G.Kodala with the assistance of M.Bedward, S.J.Davies, C.Herscovitch, D.A.Kelch and/or D.A.Morrison

Links

- [Acacia pubifolia](#) - Old Flora of Australia site page for Acacia pubifolia

Taxonomy from Australian Plant Census

- Kingdom: Plantae
- Phylum: Charophyta
- Class: Equisetopsida
- Subclass: Magnoliidae
- Order: Fabales
- Family: Fabaceae
- Genus: Acacia
- Species: Acacia pubifolia



Leaflet | Australian Virtual Herbarium (CHAH), Map data © OpenStreetMap contributors, CC-BY-SA, Imagery © Mapbox

[View in Australian Virtual Herbarium](#)



Australian Plant Image Index

Conservation & sensitivity lists

- [Census of the Queensland Flora 2013 - Vascular plants](#)
- [Greening the Grain Belt test list](#)

Phylolink

Overview

Phylolink is a collection of tools through which biodiversity can be explored from a **phylogenetic** (or tree of life) perspective.

At the core of these tools is the ability to easily intersect a phylogenetic tree with species occurrence records, environmental data, and species character information.

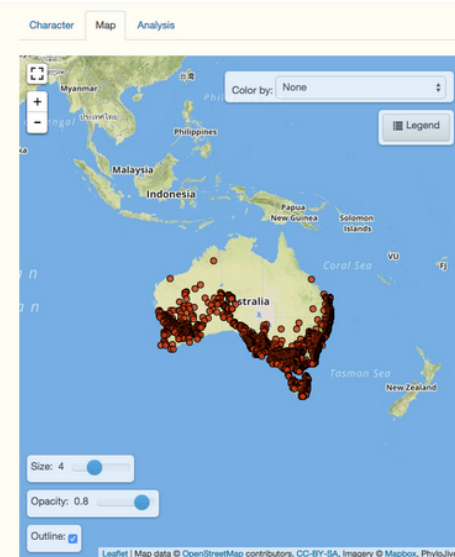
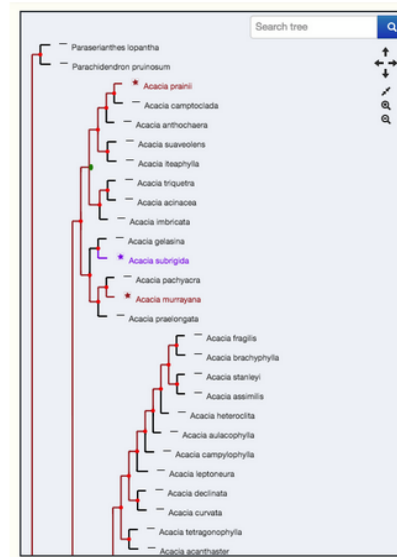
The result is powerful ways of combining data to generate flexible and customisable visualisations, profiles and metrics for biodiversity.

[Start Phylolink](#)

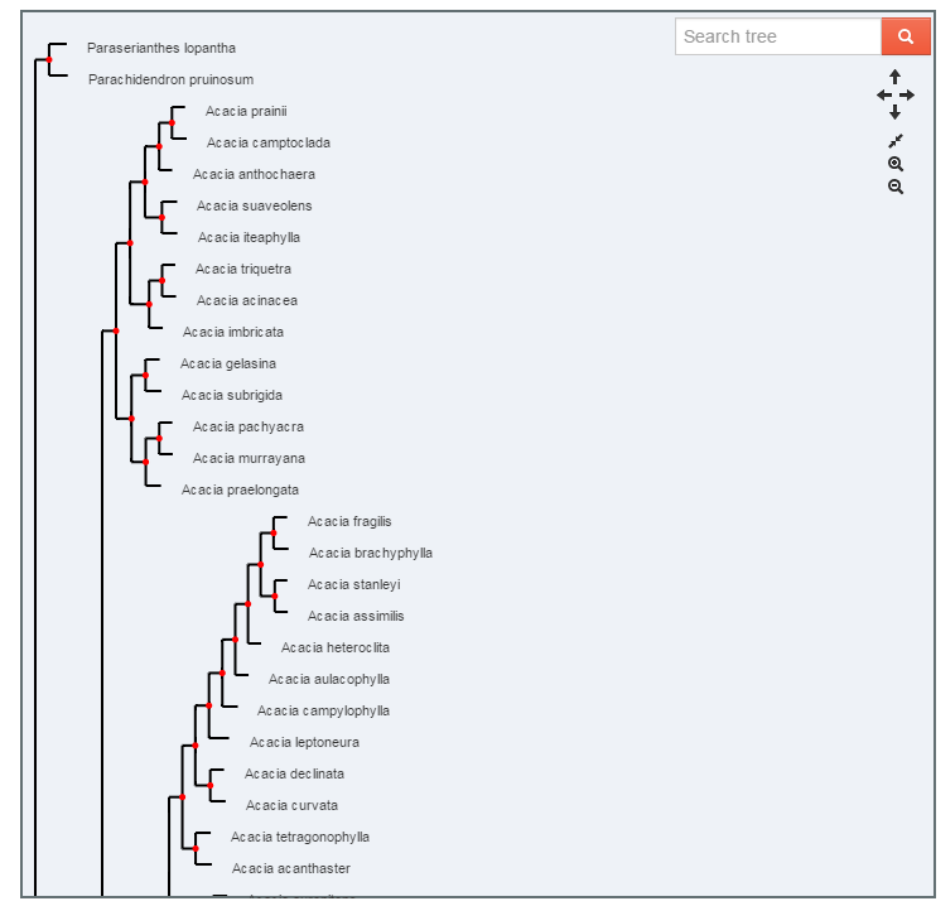
[Explore Phylogenetic Diversity](#)

Collaborators and acknowledgement:

These tools are the result of a collaboration between scientists, the creators of PhyloJIVE and the Atlas of Living Australia. The tools have been developed by Temi Varghese, Rebecca Pirzi, Adam Collins, Nick dos Remedios and Dave Martin, with advice from Joe Miller, Craig Moritz, Dan Rosauer and Garry Jolley-Rogers.



My viz #122



Upload your character data

Or, pick a character dataset from the available list:

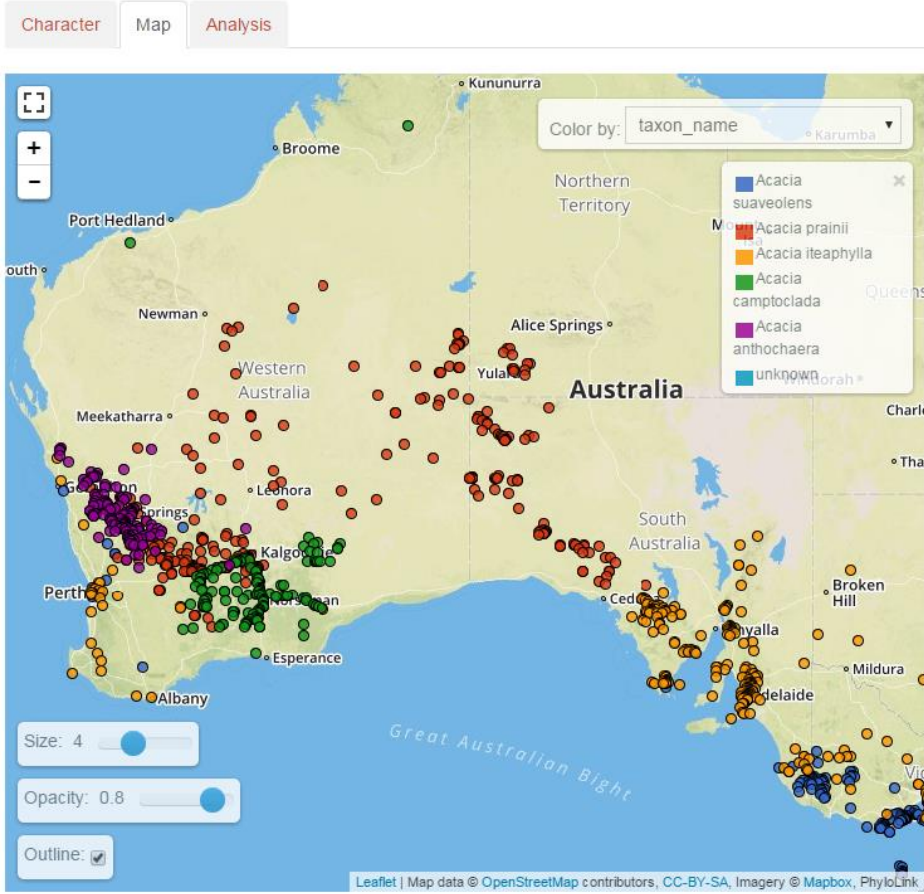
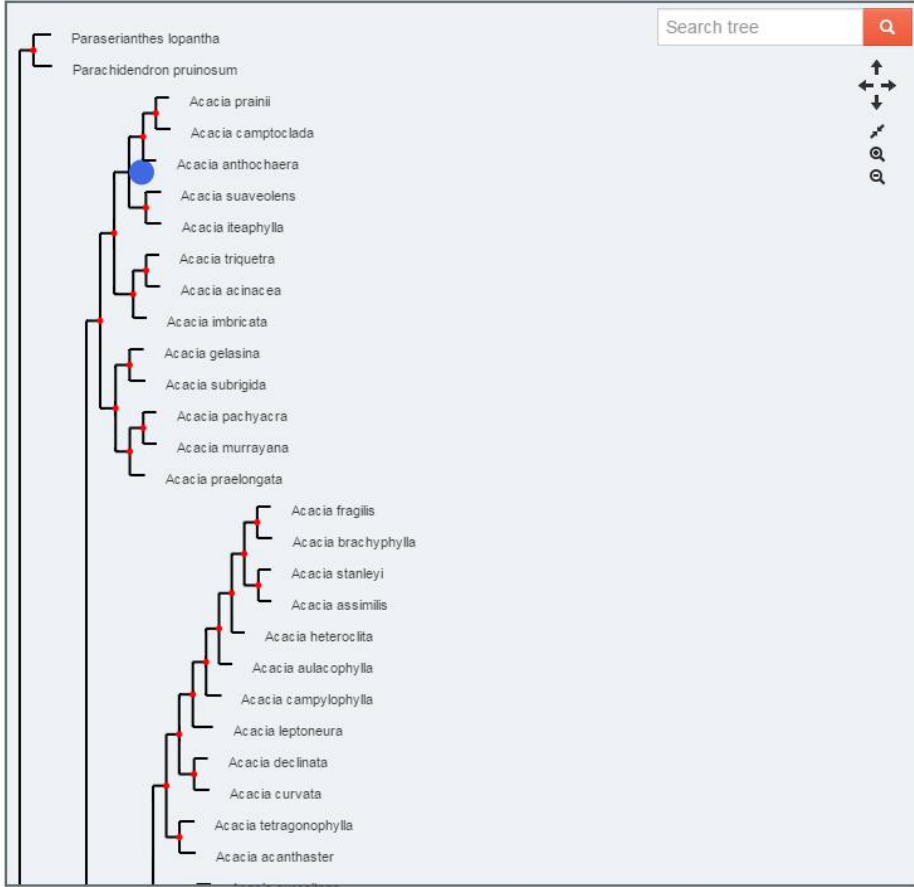
List of characters available:

Note

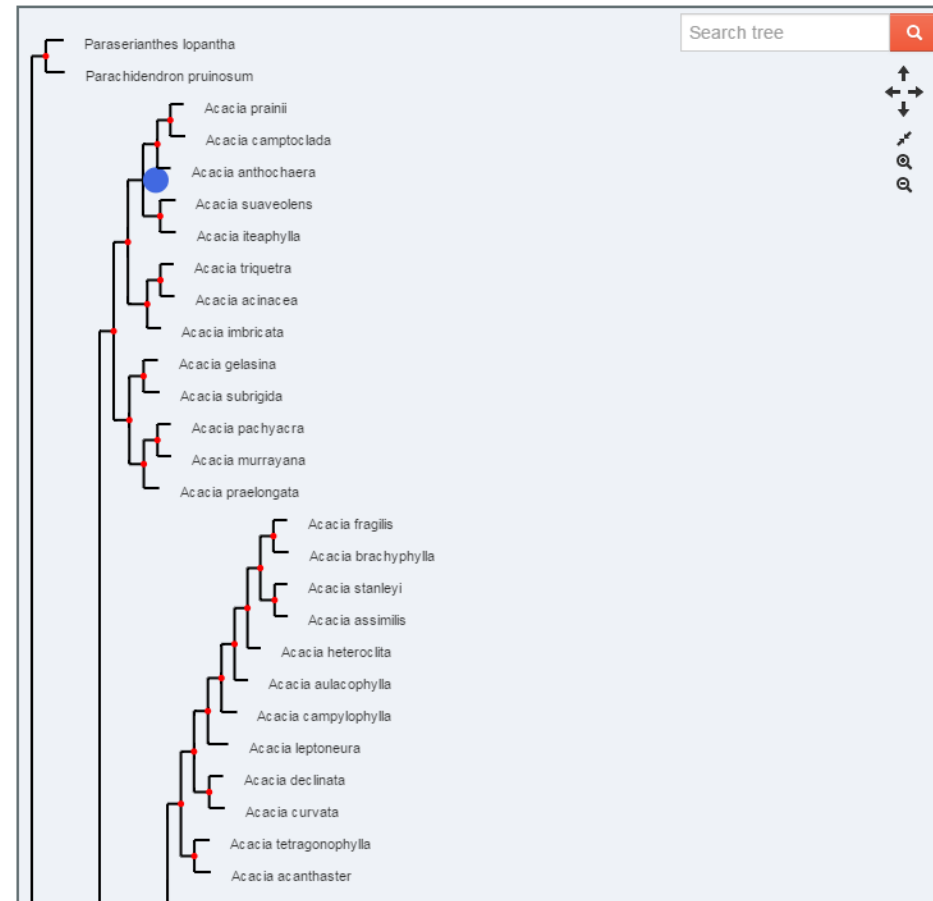
First, select a character dataset from the given list, or upload your character data. Then click on *Add Character to Tree* button. Tree branch color is determined by the first character on the list. To color the tree using a character either drag that character to the top of the list, or edit the first character by clicking on that character.

Home / Start PhyloLink / My Visualisations

My viz #122



My viz #122



Character

Map

Analysis

Upload your character data

Or, pick a character dataset from the available list:

List of characters available:

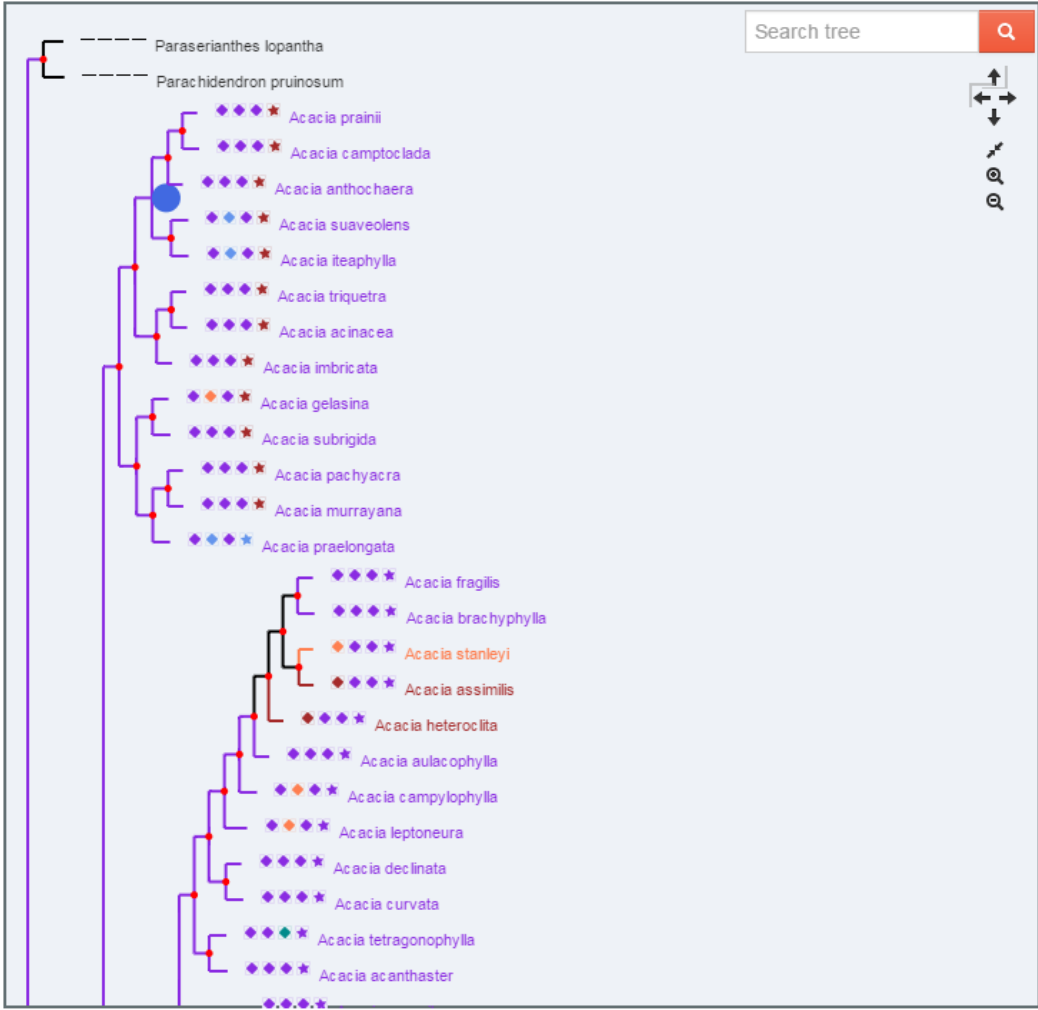
Acacia Characters

Add Character to Tree

Note

First, select a character dataset from the given list, or upload your character data. Then click on *Add Character to Tree* button. Tree branch color is determined by the first character on the list. To color the tree using a character either drag that character to the top of the list, or edit the first character by clicking on that character.

My viz #122



Character **Map** Analysis

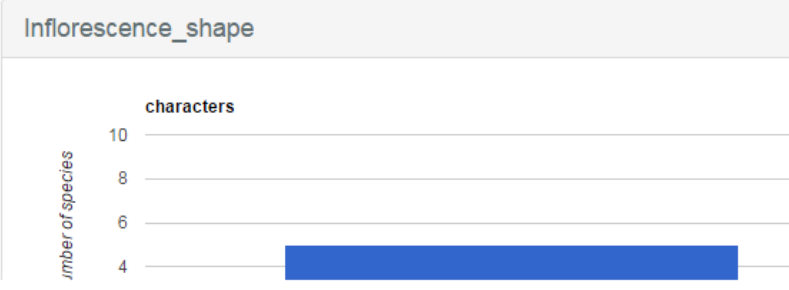
Upload your character data

Or, pick a character dataset from the available list:

List of characters available:

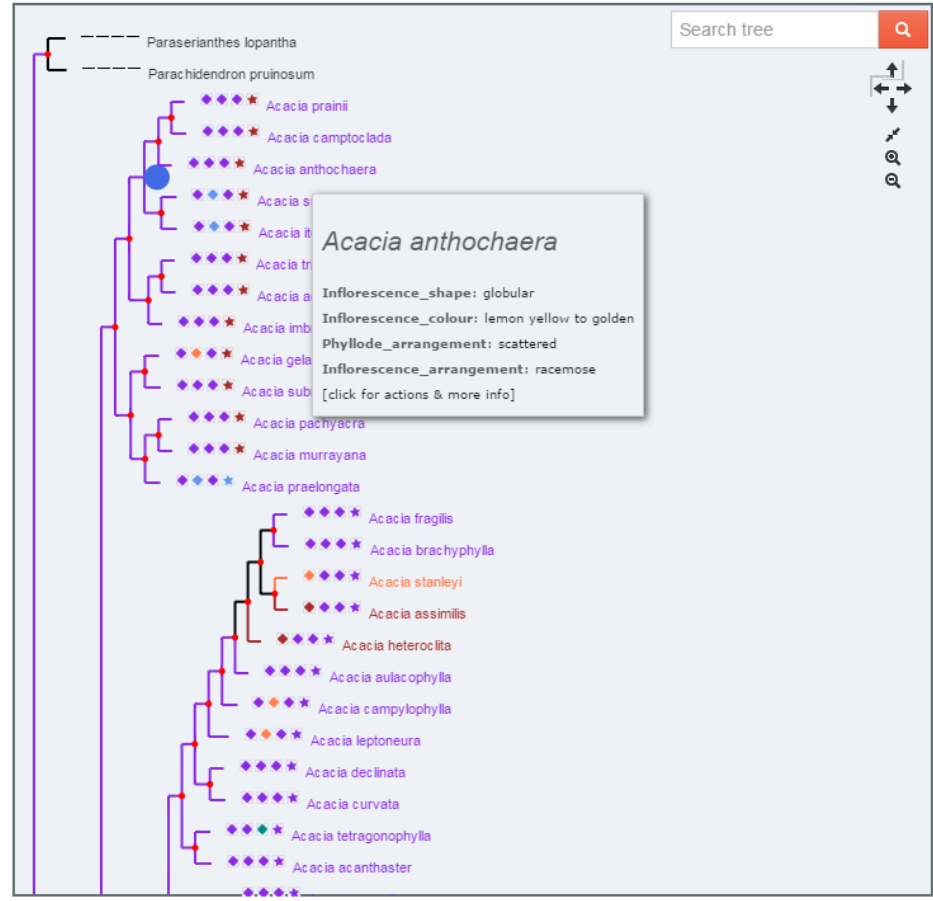
Add Character to Tree

- ↑ Inflorescence_shape ✕
- ↑ Inflorescence_colour ✕
- ↑ Phyllode_arrangement ✕
- ↑ Inflorescence_arrangement ✕





My viz #122



Character Map Analysis

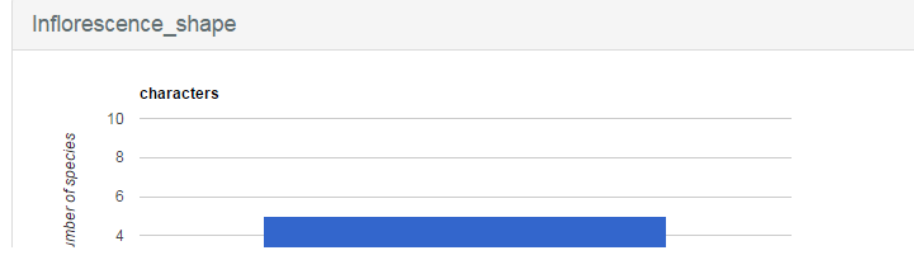
Upload your character data

Or, pick a character dataset from the available list:

List of characters available:

Add Character to Tree

- ↑ Inflorescence_shape ✕
- ↑ Inflorescence_colour ✕
- ↑ Phyllode_arrangement ✕
- ↑ Inflorescence_arrangement ✕





Report a Sighting

Species

Type a scientific or common name into the box below and choose from the auto-complete list.

Help me identify my sighting

How confident are you with the species identification? Confident
 Uncertain

(Optional) Tag this sighting with species group and/or sub-group:

Media

+ Add files...

Optional. Add one or more images. Image metadata will be used to automatically set date and location fields (where available)
Hint: you can drag and drop files onto this window

Location

Use my location

OR

Enter an address, location or lat/l

Lookup

Latitude (decimal):

Longitude (decimal):

Accuracy (metres):

50 ▾

Source of coordinates:


Google maps ▾



Help with species identification

1. Specify a location

Where did you see the species of interest?

 Use my location

OR

Enter an address, location or lat/lng

Lookup

Show known species in a km area surrounding this location



Tip: drag the marker to fine-tune your location

2. Narrow to a species group

Select the group and subgroup (optional) that best fits the species (if unsuccessful try different groups or increase the "surrounding area" size - drop-down above)

[Specify a location first]

3. Browse species images

Look for images that match the species you are trying to identify. Click the image for more example images of that species and finally click the "select this image" button.

hide species without images

Help with species identification

1. Specify a location

Where did you see the species of interest?

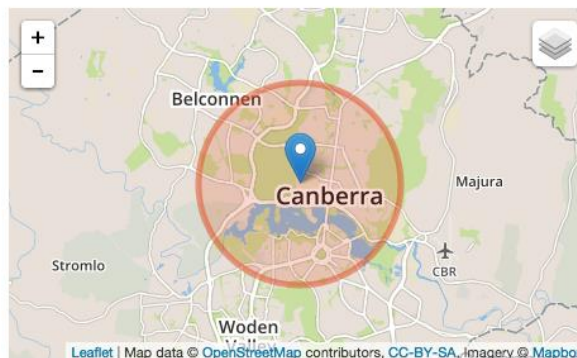
Use my location

OR

Enter an address, location or lat/long

Show known species in a km area surrounding this location

Lat/Lng(-35.27729, 149.11263)



Tip: drag the marker to fine-tune your location

2. Narrow to a species group

Select the group and subgroup (optional) that best fits the species (if unsuccessful try different groups or increase the 'surrounding area' size - drop-down above)

Mammals 40 Birds 398 **Insects 1829** Amphibians 8 Reptiles 33 Fish 1 Molluscs 13
Crustaceans 1 Plants 8542 Fungi 311

Select a species sub-group (optional)

Ant-lions 32 Aphids 129 Dragonflies 27 Stoneflies 7 Stick Insects 1 **Mantids 5**
Butterflies, Moths 776 Beetles 357 Earwigs 5 Flies 121 Web-spinners 1 Caddisflies 9 Termites 9
Scorpion-flies 2 Alderflies 4 Grasshoppers 14 Cockroaches 20 Ants 291 Thrips 16 Fleas 3

3. Browse species images

Look for images that match the species you are trying to identify. Click the image for more example images of that species and finally click the "select this image" button.

hide species without images



Purplewinged Mantid

False Garden Mantid





Green Mantid

Community identification help

Records contributed by others and needing confirmation of what they are. Can you help to identify any of the species?

Get involved, have fun and contribute to science.

10 questions

Answers	Views	Date		Recorded by
0 answers	4 views	Asked by 2 days ago	 2 images	Kathy Schneebeli 2015-02-06T14:00:00+0000 Kaputar NSW 2390, Australia, Bundabulla Circuit
0 answers	4 views	Asked by 2 days ago	 3 images	Reiner Richter 2014-12-12T04:01:00+0000 Narrows Track, Thomson River valley
0 answers	0 views	Asked by 2 days ago	 2 images	Julia Clarkin 2015-02-12T05:20:00+0000 In the pool. Near filter.
0 answers	0 views	Asked by 2 days ago	 6 images	Christiane Geissler 2015-01-03T03:25:00+0000 268 Wonbah Road, Wonbah QLD 4671, Australia

Species identification case #718

Views: 8



☆ Not following

Recorded by Kathy Schneebeli

Event date 2015-02-06T14:00:00+0000

Locality Kaputar NSW 2390, Australia, Bundabulla Circuit

Scientific name *Pterostylis coccina*

Common name Scarlet Greenhood

Add a comment or question...

Accepted answer

Pterostylis coccina : Scarlet Greenhood

Identified by moments ago



3



Add a comment on this identification...

Identify this occurrence

Scientific name

Common name

Remarks

Submit identification

Specimens images from Australia's Natural History collections

Images from Australian Natural History collections made available by the museums and herbaria of Australia. To view images from all collections, [click here](#).

South Australian Museum Terrestrial Invertebrate Collection

South Australian Museum



The collection has Australia-wide and Indo-Pacific representation, plus some world specimens for comparative purposes.

Australian National Insect Collection

Commonwealth Scientific and Industrial Research Organisation



The Australian National Insect Collection is recognized both nationally and internationally as a major research collection.

Museum Victoria Ornithology Collection

Museum Victoria



The Ornithology Collection contains more than 70 000 specimens of mounted birds, skins, skeletons, eggs and specimens preserved in alcohol. One of the largest Australian avian collections, primarily of Australian species and with a strong Victorian emphasis, it includes material from a broad spectrum of the world's avifauna and represents in excess of 4000 species.

Australian Museum Entomology Collection

Australian Museum



Museum Victoria Entomology Collection

Museum Victoria



Australian Museum Marine Invertebrate Collection

Australian Museum



Home : [Blogs & news](#) :: Learning by doing: The ALA is sponsoring Yugul Mangi Rangers and ecologists to conduct two-way biodiversity research in remote Arnhem Land

Learning by doing: The ALA is sponsoring Yugul Mangi Rangers and ecologists to conduct two-way biodiversity research in remote Arnhem Land

5 December, 2014

The Aboriginal Yugul Mangi Rangers (a group of 5 men and 4 women) are working together with Emilie Ens and Mitchell Scott, ecologists from Macquarie University, to document species occurring in one of the lesser known parts of the country – south eastern Arnhem Land. The project will enter Western and Indigenous scientific knowledge into the Atlas of Living Australia (ALA) and produce a two-way Indigenous engagement case study to encourage more Indigenous content.

[Read more](#)



Cherry Daniels (first Yugul Mangi Ranger co-ordinator, Senior Ngandi woman and IPA Cultural Advisor) with Edna Nelson (Yugul Mangi Ranger).

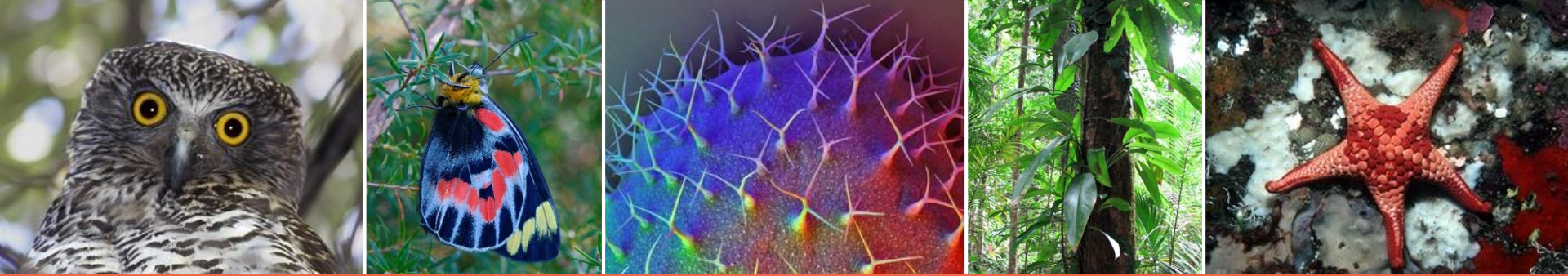


Andy Lukaman Peters explaining to Benjamin Wilfred about the bush food and medicine plants near Lake Katherine

Recent posts

- [The different challenges of integrating data from many sources](#)
- [Panoramio](#)
- [Sign up to GBIF Australia email alerts](#)
- [Look for Whale Sharks in your Lounge Room](#)
- [Sandbox – custom search facets for your data](#)
- [Using the ALA to help develop biodiverse plantings suitable for changing climatic conditions](#)
- [Viewing species layers in uDIG & ArcGIS](#)
- [PhyloJive – Integrating biodiversity data with phylogenies](#)
- [The Atlas in the Classroom](#)
- [Holiday Greetings from the Atlas of Living Australia](#)
- [Australian BHL volunteers receive award](#)
- [Atlas Science Symposium](#)
- [Science Symposium presentations now available](#)

Leave a Reply



www.ala.org.au

Thank you
www.ala.org.au



ATLAS OF **LIVING**
AUSTRALIA
sharing biodiversity knowledge