

SBMNH

Vertebrate Collections

{ Collection Digitization Process and Workflow





Collection Types



SPECIMEN NUMBER	DATE	SEX	SCIENTIFIC NAME	State or Country	LOCALITY	County
3651	9May1986	M	<i>Ehrydra lutris</i>	California	Ami. off Moss Landing	Monterey
3652	20Aug1986	F	<i>Ehrydra lutris</i>	California	Camel Beach opposite 9th St.	Monterey
3653	21Aug1986	F	<i>Ehrydra lutris</i>	California	Ami. N main entrance Zuniowski St. Bch	Monterey
3654	24Aug1986	F	<i>Ehrydra lutris</i>	California	Salinas River 1 of Monterey Dunes Col	Monterey
3655	29Aug1986	M	<i>Ehrydra lutris</i>	California	Rio del Mar Beach	Santa Cruz
3656	6Nov1986	F	<i>Ehrydra lutris</i>	California	San Jacinto St. Atascadero St. Bch.	San Luis Obispo
3657	10Nov1986	F	<i>Ehrydra lutris</i>	California	Moonstone Bch.	San Luis Obispo
3658	26Feb1986	F	<i>Ehrydra lutris</i>	California	Approx. 2mi. S. of Piedras Blancas	San Luis Obispo
3659	26Feb1986	F	<i>Ehrydra lutris</i>	California	Oak Knoll Crk.	San Luis Obispo
3660	20May1987	F	<i>Zalophus californianus</i>	California	Leadbetter Bch. at the point	Santa Barbara
3661	31Dec1987	F	<i>Zalophus californianus</i>	California	Humboldt, Santa Barbara	Santa Barbara
3662	26Aug1988	M	<i>Pursiops truncatus</i>	California	McCrath State Beach	Ventura
3663	30Aug1988	F	<i>Delphinus delphis</i>	California	Near end Hwy 166 Santa Maria Fvr. Mth.	Santa Maria
3664	16Dec1986	F	<i>Delphinus delphis</i>	California	approx. 1mi. E. of Devereaux Pt.	Santa Barbara
3665	29Jun1986	M	<i>Delphinus delphis</i>	California	approx. 1mi. E. of Hope Ranch Bch. Entr.	Santa Barbara
3666	29Jun1986	M	<i>Delphinus delphis</i>	California	approx. 100m N Hope Ranch beach Entr.	Santa Barbara
3667	Jul1988	F	<i>Phocoenoides anthropicus</i>	Africa	Namibia	
3668	29Aug1987	M	<i>Ehrydra lutris</i>	California	Asilomar State Bch. 1661 Sunset Blvd.	Monterey
3669	?	?	<i>Pursiops truncatus</i>	California	Carpinteria Bch.	Santa Barbara
3670	12Nov1986	F	<i>Sialia currucoides</i>	California	Santa Rosa Is. S slope Soledad Peak	Santa Barbara
3671	1Nov1986	M	<i>Delphinus delphis</i>	California	Refugio State Beach	Santa Barbara
3672	14Apr1987	M	<i>Chelydra serpentina serpentina</i>	California	Santa Barbara, Alice Keck Park	Santa Barbara
3673	5Apr1964	?	<i>Myotis californicus californicus</i>	California	Santa Barbara	Santa Barbara
3674			<i>Myotis californicus</i>			
3675			<i>Antrozous pallidus</i>			
3676	28Apr1987	M	<i>Vulpes vulpes</i>	California	Carrillo Hill	Santa Barbara
3677	30Sep1982	M	<i>Brocyon cinereogriseus</i>	California	Sierra Dr. near 1st. Foothill/Durmpke	Santa Barbara
3678	26Jun1983	M	<i>Brocyon littoralis dickeyi</i>	California	San Nicholas Is. Monroe Ed. 1mi. E	Ventura
3679	1Aug1979	F	<i>Ehrydra lutris</i>	California	.2mi N of Atascadero State Beach	San Luis Obispo
3680	22May1980	M	<i>Ehrydra lutris</i>	California	1mi N of Oceano Ramp	San Luis Obispo
3681	10Feb1987	F	<i>Terrapene carolina triunguis</i>	California	Santa Barbara	Santa Barbara
3682	12Mar1987	F	<i>Zopherus agassizii</i>	California	Brought into Ed. Dept.	Santa Barbara
3683	31Jan1987	F	<i>Terrapene carolina triunguis</i>	California	Anacapa and Quinto on sidewalk	Santa Barbara
3684	13Sep1984	F	<i>Terrapene carolina triunguis</i>	California	Santa Barbara Natural History Museum	Santa Barbara
3685	29Apr1984	F	<i>Zopherus agassizii</i>	California	Santa Barbara Natural History Museum	Santa Barbara
3686	20Feb1984	F	<i>Terrapene carolina major</i>	California	Santa Barbara Natural History Museum	Santa Barbara
3687	10Aug1987	?	<i>Pseudemys scripta elegans</i>	California	Ed. Dept. Museum Natural History	Santa Barbara
3688	13Mar1988	M	<i>Terrapene ornata ornata</i>	California	Santa Barbara Museum Natural History	Santa Barbara
3689			<i>Elanus inscriptus ^{marginatus}</i>	California	Santa Barbara Westside constrctn site	Santa Barbara
3690	2Feb1987	F	<i>Larus californicus</i>	California	Next to Red Lion Inn	Santa Barbara
3691	7Feb1987	F	<i>Castor canadensis</i>	California	San Antonio Crk. Lmpc Casmallia/El Rncho	Santa Barbara
3692	24Apr1987	M	<i>Castor canadensis</i>	California	VAFB San Antonio Crk. near 5-20 brdg	Santa Barbara
3693	7Apr1987	M	<i>Castor canadensis</i>	California	San Antonio Crk. Lmpc Casmallia/El Rncho	Santa Barbara
3694	7Apr1987	M	<i>Castor canadensis</i>	California	VAFB San Antonio Crk. near 5-20 brdg	Santa Barbara
3695	15Apr1987	M	<i>Castor canadensis</i>	California	San Antonio Crk. Lmpc Casmallia/El Rncho	Santa Barbara
3696	7Apr1987	F	<i>Castor canadensis</i>	California	VAFB San Antonio Crk. near 5-20 brdg	Santa Barbara
3697	24Mar1987	M	<i>Castor canadensis</i>	California	San Antonio Crk. Lmpc Casmallia/El Rncho	Santa Barbara
3698	22Apr1987	F	<i>Castor canadensis</i>	California	VAFB San Antonio Crk. near 5-20 brdg	Santa Barbara
3699	22Apr1987	F	<i>Castor canadensis</i>	California	VAFB San Antonio Crk. near 5-20 brdg	Santa Barbara
3700	24Mar1987	M	<i>Castor canadensis</i>	California	San Antonio Crk. Lmpc Casmallia/El Rncho	Santa Barbara

SPECIMEN NUMBER	ACCESSION NUMBER	COLLECTOR	ORIGINAL NUMBER	REMARKS
3651		Bob Kwoia	S0149786	SKULL/BACULUM: TL 96cm WT 22 lbs
3652		Norma Kranity	S0151986	SKULL: TL 122mm WT 48 lbs
3653		Prk. and Rec.	S0152286	SKULL: TL 96cm WT 24 lbs
3654		Prk. and Rec.	S0152286	SKULL: TL 103cm WT 30 lbs
3655		Prk. and Rec.	S0152586	SKULL/BACULUM: TL 119cm WT 43 lbs
3656		St. Prk. Ranger	S0150186	SKULL: TL 114cm WT 30 lbs
3657		R.L. Condon	S0150786	SKULL: TL 122.5cm WT 39 lbs
3658		Jim Rodkin	S0148086	SKULL: TL 115cm WT 30 lbs
3659		Jim Rodkin	S0148186	SKULL: TL 122cm WT 42 lbs
3660		SMHC	87-13	SKULL: TL 161cm WT 159 lbs
3661		Woodhouse/Bray	87-25	SKULL: TL 99.5cm WT 37 lbs See data sheet
3662		Woodhouse/Bray	86-21	SKULL: TL 330cm WT 800-1,000 lbs estimated
3663		Woodhouse/Bray	86-26	SKULL: TL 180cm WT 120 lbs
3664		Woodhouse	86-28	SKULL: TL 217.6cm WT 180 lbs
3665		Woodhouse/Bray	86-19	SKULL: TL 232.6cm
3666		Woodhouse/Bray	87-6	SKULL: TL 215.9cm
3667	3288	H. Brelsford		SKULL: shot and killed on game ranch of Jim Oelofse
3668		J. Carpenter	S0160987	SKULL/BACULUM: Totally maggot-eaten; almost mummified
3669	3281	J. Garney Stoebe		SKULL: See incoming package order for information
3670		P.W. Collins		SKULL: TL 156 Tail 66 WC 110 mm WT 25.2g See data card
3671		Woodhouse	86-26	SKULL/Sec. vert.: WT 103 lbs See data sheet for complete data
3672		Animal Control		SKULL: TL 770 Flastron L 250 Tail 280 Carapace L 335 mm WT 25.5 lbs
3673	3278	Bob Reed		SKULL:
3674	3278			SKULL:
3675	3278			SKULL:
3676		G. Robinson		SKULL: 99.1-40.0-17.0-9.0 cm WT 16 lbs Heavy shedding
3677		P.W. Collins	Nec#81-3	SKULL: 975-360-128-76 mm WT 4.5 Kg
3678		S.D. Kovach		SKULL: 735-269-106-60 mm WT 1850.4 g
3679		Anes	S0712-79	SKULL: TL approx. 113
3680		Rich Hiram	S0785-80	SKULL: TL 125 cm Probable shark attack
3681		Ed. Dept.		SKULL: WT 424.1g CL 14 cm 16 ovums, 4 large (15x10)
3682		Waldo Abbott		SKULL: WT 440.8g TL 126 mm
3683				SKULL: WT 507.4g CL 15.1cm 15 ovums 15x17.7mm
3684		Adam Clarke		SKULL: WT 327.0g Tal 30mm
3685		Ed. Dept.		SKULL: WT 60.0g CL 120mm
3686		Ed. Dept.		SKULL: WT 487.3g Tal 28.0mm 10eggs Largest 20mm diameter
3687		Ed. Dept.		SKULL: WT 311.1g Tal 6.1cm TL 22.8cm
3688		Lynn McCall		SKULL: WT 150.8g Tal 40.0mm
3689				SKULL: WT 73.1g Tal 25.0mm <i>Chinese Taipei - Seagull Pond, Taichung</i>
3690		S.M. Mack		SKULL: WT 576.3g ovum 2.5x7.5mm TL4790 Tail151 WC387 mm DOR
3691		Wayne Robertson		SKULL:
3692		Wayne Robertson		SKULL:
3693		Wayne Robertson		SKULL:
3694		Wayne Robertson		SKULL:
3695		Wayne Robertson		SKULL:
3696		Wayne Robertson		SKULL:
3697		Wayne Robertson		SKULL:
3698		Wayne Robertson		SKULL:
3699		Wayne Robertson		SKULL:
3700		Wayne Robertson		SKULL:

Legacy data

Direct entry from five collection ledgers

Pros

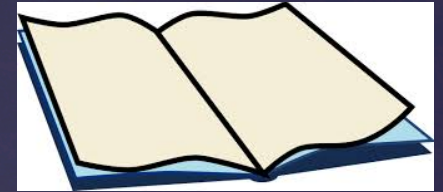
All data in quickly.

Cons

Ledgers have abbreviated data

Volunteers perpetuate errors

Pre geo-referencing procedures!

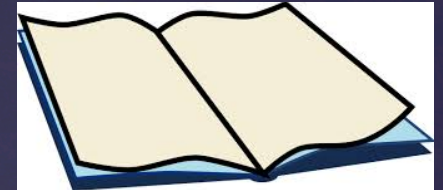


First level of effort

Let's geo-reference!

Issues include lots of effort prior to uncertainty error procedures.

Go back to original specimen data tags to verify locality, additional preparation notes and measurements.



Second level of effort

COLLECTION DATA - VERTEBRATE ZOO, SEMNR

Specimen: Hermit Tanager
Precise Locality: 2900 San Marcos Pass Rd.

County: S. Barb. X State: Calif: X

Date Collected: Day 5 Month Nov Year 2013

Collector: John Johnson

Address:

How Obtained: DOR, Her Woodport

Remarks: 2000ft elev.



2013/2014

KAF 289 ¹⁰⁶¹⁹ / *Accipiter striatus* ShHa
CA: Santa Barbara Co.; Santa Barbara, Botanic Gardens 2013-17
George Rybmack ♀ ovaries granular, 4 ommes
March 2013 fat heavy, subcutaneous + abdominal
prep 05 Dec 2013 active (mod) trunk molt
skel only 302 - 197 - 154 mm 188.6

KAF 290 ¹⁰⁶¹⁰ / *Certhia monocerata* Rh An
CA: Santa Barbara Co.; Talama, Talama Beach
DOR & Rehab ♀ ovary present
J. Ho war (SBWCA#93) emaciated
30 January 2012 stomach contents
prep 12 Dec 2013 ♀ molt seen
skel only 289 - 170 - 46 321.9 gms

KAF 291 ¹⁰⁵⁹² / *Rallus limicola* Vra
CA: Santa Barbara Co.; Topaz Solar Farm
N 35.385523 W 120.060373 rilled w/ fence
J. Dart ♀ ovary 4x5 mm head trauma
11 Sep '12 heavy abd + sub cut fat
prep 22 Dec active body molt, retinas in sheath
skel only 168 - 104 - 45 69.9 gm

KAF 292 ¹⁰⁶²¹ / *Falco sparverius* AmKe
CA: Santa Barbara Co.; 1414 Paseo del Oroso
window strike Ocaso

R. Schiewink ♂ stomach - insect parts
16 Nov 2012 active head molt
mod tract fat.
prep 22 Dec
skel only 248 - 194 - 128 92.0

KAF 293 ¹⁰⁶²² / *Carduelis pinus* P. Si
CA: Santa Barbara Co.; Goleta, Spruce Drive
SBWCA ♀ ovary tissue present eye cloudy
died 11 Dec 2012 stomach - seeds
prep Jan 3 2011 molt - D fat - neck
skel only 101 - 71 - 47 8.9 gms



SANTA BARBARA MUSEUM OF NATURAL HISTORY
Cathartes melilotus
CA: Santa Barbara Co., Grasslands
17480 CA 911
COLL & DATE COLL KARA HANSEN 9/14/2014

New arrivals

1

COLLECTION DATA - VERTEBRATE ZOO, SEMNR

Name: *Hermit Tanager*
Site Locality: *2900 Sun Marner Pass Rd.*County: S. Barb. *X* State: Calif: *X*Date Collected: Day *5* Month *Nov* Year *2013*Collector: *John Johnson*

Address:

How Obtained: DOR, *Her Woodport*Remarks: *2000ft elev.*

2013/2014

KAF 289 ¹⁰⁶¹⁹ / *Accipiter striatus* ShHh
CA: Santa Barbara Co.; Santa Barbara, Botanic Gardens 2013-17
George Rybmack ♀ ovaries granular, 4x10mm
March 2013 fat heavy, subcutaneous + abdominal
prep 05 Dec 2013 active (wood) trunk molt
skel only 302-197-154mm 188.6

KAF 290 ¹⁰⁶¹⁰ / *Certhia monocerata* Rh An
CA: Santa Barbara Co.; Talama, Talama Beach
DOR & Rehab ♀ ovary present
J. Howar (SBWCA#93) emaciated
30 January 2012 stomach contents
prep 12 Dec 2013 ♀ molt seen
skel only 289-170-46 321.9 gms

KAF 291 ¹⁰⁵⁹² / *Rallus limicola* Vra
CA: Santa Barbara Co.; Topaz Solar Farm
N 35.385523 W 120.060373 rilled w/ fence
J. Dart ♀ ovary 4x5mm head trauma
11 Sep '12 heavy abd + subcut fat
prep 22 Dec active early molt, retinas in sheath
skel only 168-104-45 69.9 gm

KAF 292 ¹⁰⁶²¹ / *Falco sparverius* AmKe
CA: Santa Barbara Co.; 1414 Paseo del Oroso
window strike Ocaso

R. Schiewink ♂ stomach - insect parts
16 Nov 2012 active head molt
prep 22 Dec mod tract fat.
skel only 248-194-128 92.0

KAF 293 ¹⁰⁶²² / *Carduelis pinus* P. Si
CA: Santa Barbara Co.; Goleta, Spruce Drive
SBWCA ♀ ovary tissue present eye cloudy
died 11 Dec 2012 stomach - seeds
prep Jan 3 2014 molt - 0 fat - neck
skel only 101-71-47 8.9 gms



SANTA BARBARA MUSEUM OF NATURAL HISTORY
Cathartes melilotus
CA: Santa Barbara Co.; 17480 Calle Vista
COLL & DATE COLL: Kara Hagedorn 7/14/2014

New arrivals

1

COLLECTION DATA - VERTEBRATE ZOO, SEMNR

Name: Hermit Tanager
Site Locality: 2900 San Marcos Pass Rd.County: S. Barb. X State: Calif: XDate Collected: Day 5 Month Nov Year 2013Collector: John Johnson

Address:

How Obtained: DOR, Her Wood ptRemarks: 2008pt clear

2

2013/2014

09.10.11/ accipiter striatus ShHh
Santa Barbara Co.; Santa Barbara, 2013-17
1412 Gardens (n=2)
George Rybmack ♀ ovaries granular, 4 ovaries
March 2013 fat heavy, subcutaneous + abdominal
prep 05 Dec 2013 active (good) trunk molt
skel only 302-197-154mm 188.6

KAF 290 ¹⁰⁰¹⁰ Certhia monocerata Rh An
CA: Santa Barbara Co.; Talama, Talama Beach
DOR & Rehab ♀ ovary present
J. Howar (SBWEN#93) emaciated
30 January 2012 stomach contents
prep 12 Dec 2013 ♀ molt seen
skel only 289-170-46 321.9 gms

KAF 291 ¹⁰⁰¹² Rallus leucicola Vra
CA: Santa Barbara Co.; Topaz Solar Farm
N 35.385523 W 120.060373 rilled w/ fence
J. Dart ♀ ovary 4x5mm head trauma
11 Sep '12 heavy abd + subcut fat
prep 22 Dec active body molt, retinas in sheath
skel only 168-104-45 69.9 gm

KAF 292 ¹⁰⁰²¹ Falco sparverius AmKc
CA: Santa Barbara Co.; 1414 Paseo del Oroso
window strike Ocaso

R. Schiewink ♂ stomach - insect parts
16 Nov 2012 active head molt
mod tract fat.
prep 22 Dec
skel only 248-194-128 92.0

KAF 293 ¹⁰⁰²² Carduelis pinus P. Si
CA: Santa Barbara Co.; Goleta, Spruce Drive
SBWEN ♀ ovary tissue present eye cloudy
died 11 Dec 2012 stomach - seeds
prep Jan 3 2014 molt - D fat - neck
skel only 101-71-47 8.9 gms



SANTA BARBARA MUSEUM OF NATURAL HISTORY
Cathartes melularis ♀
CA: Santa Barbara Co.; 17480 Calle Vista
COLL & DATE COLL KARA HANSEN 7/14/2014

New arrivals

1

COLLECTION DATA - VERTEBRATE ZOO, SEMNR

Specimen: Hermit Tanager
Local: 2900 San Marcos Pass Rd.

County: S. Barb. X State: Calif: X
Date Collected: Day 5 Month Nov Year 2013
Collector: John Johnson
Address: _____
How Obtained: DOR, Her Wood pt
Remarks: 2008pt clear



2

2013/2014

09/10/14 accipiter striatus ShHa
Santa Barbara Co.; Santa Barbara, 2013-17
1412 Gardens (n=2)
George Rybmack ♀ ovaries granular, 4 ommes
March 2013 fat heavy, subcutaneous + abdominal
prep 05 Dec 2013 active (good) trunk molt
skel only 302-197-154mm 188.6

KAF 290 ¹⁰⁰¹⁰ Certhia monocerata Rh An
CA: Santa Barbara Co.; Talama, Talama Beach
DOR & Rehab ♀ ovary present
J. Howar (SBWCA#93) emaciated
30 January 2012 stomach contents
prep 12 Dec 2013 ♀ molt seen
skel only 289-170-46 321.9 gms

KAF 291 ¹⁰⁰¹² Rallus leucicola Vra
CA: Santa Barbara Co.; Topaz Solar Farm
N 35.385523 W 120.060373 rilled w/ fence
J. Dart ♀ ovary 4x5mm head trauma
11 Sep '12 heavy abd + subcut fat
prep 22 Dec active early molt, retinas in sheath
skel only 168-104-45 69.9 gm

KAF 292 ¹⁰⁰²¹ Falco sparverius AmKe
CA: Santa Barbara Co.; 1414 Paseo del Oroso
window strike Ocaso

R. Schiewink ♂ stomach - insect parts
16 Nov 2012 active head molt
mod tract fat.
prep 22 Dec
skel only 248-194-128 92.0

KAF 293 ¹⁰⁰²² Carduelis pinus Pi Si
CA: Santa Barbara Co.; Goleta, Spruce Drive
SBWCA ♀ ovary tissue present eye cloudy
died 11 Dec 2017 stomach - seeds
prep Jan 3 2011 molt - D fat - neck
skel only 101-71-47 8.9 gms



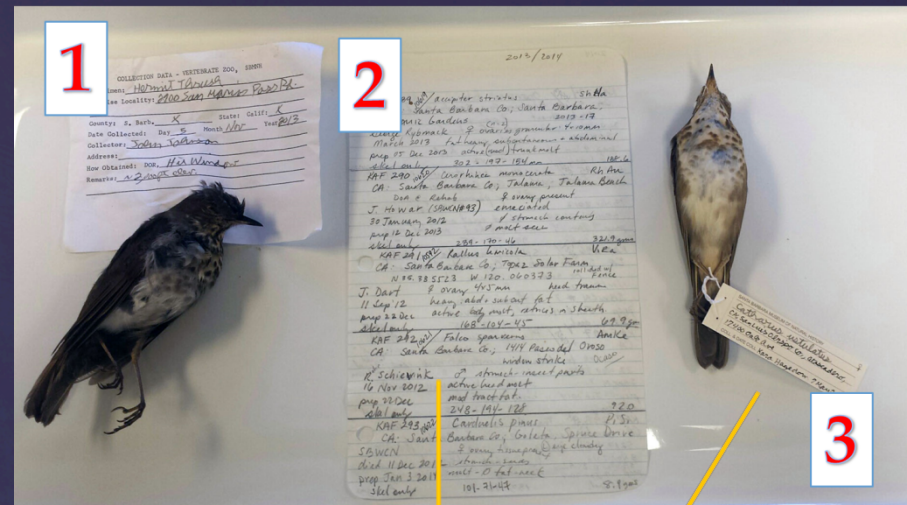
SANTA BARBARA MUSEUM OF NATURAL HISTORY
Catbird *Melospiza melodia*
CA: Santa Barbara Co.; 17480 Calle Vista
COLL & DATE COLL: KARA HANDELSON 9/14/14

3

New arrivals

Now use direct entry from specimen tag and preparation catalog.

Advantage of being to geo-reference at same time with only 1-2 additional minutes of effort per record.



GEOLocate



Current level of effort



SBMNH Vertebrate Collections Database



2004



DiGIR – Distributed Generic Information Retrieval Protocol



A. O. U. 278	SET MARK 6/30	MUSEUM OF COMPARATIVE OOLOGY SANTA BARBARA, CAL. EXPLORATIONS IN CALIFORNIA—SEASON OF 1920		AC. No. 219 - 4
SPECIES		Egialitis virosa Charadrius alexandrinus nivosus Snowy Plover		
LOCALITY	Sandyland beach near Carpinteria Cal		DATE	Apr 11, 1920
INCUBATION	fresh	IDENTITY	Pos	
NEST MEAS.—OUTSIDE DIAM.	INS. DIAM.	OUTS. DEPTH	INS. DEP.	
NEST WITH SET no: Eggs placed in tiny depression in slightly elevated portion of dry sand beach above reach of ordinary tides. Collected by Miss Kate Walker for W.P.D.				
CHIEF OF SURVEY OR VOUCHING COLLECTOR W.P.D.		ACTUAL COLLECTOR W. Lee Dawso		



A.O.U. 278	SET MARK KAF ^{34a-b} /2	SANTA BARBARA MUSEUM OF NATURAL HISTORY OOLOGY COLLECTION	AC. No. No.
SPECIES		Charadrius alexandrinus nivosus Western Snowy Plover	
LOCALITY			
Guadalupe, Unocal Oil Lease, nest in gravel pad east of extraction wells at 5x. KAF 99-12			
Co. San Luis Obispo	STATE	CA	DATE 26 July 1999
No EGGS	2	INCUBATION	started
NEST WITH SET	none		
REMARKS			
Nest abandoned. A) full size embryo - pickled SBMNH wet stack B) none			
INSTITUTION		SBMNH	
		K. A. Fahy ACTUAL COLLECTOR	

- Marine Mammals - Michelle Berman, Assistant Curator of Vertebrate Zoology (mberman@sbnature2.org; 805-682-4711, ext. 156)



Data also available on [Ornis](#)

Records 200 - 220 of 756

[<< previous](#) | [next >>](#)

ALL	Scientific Name	Date Collected	Country	State	County
<input type="checkbox"/>	Coragyps atratus	14-Mar-1929	United States	Texas	Medina
<input type="checkbox"/>	Coragyps atratus	8-Apr-1933	United States	Virginia	Scott
<input type="checkbox"/>	Coragyps atratus	7-Apr-1900	United States	Texas	Refugio
<input type="checkbox"/>	Coragyps atratus	18-Mar-1933	United States	Mississippi	Hinds
<input type="checkbox"/>	Coragyps atratus	12-Mar-1933	United States	Tennessee	Sullivan
<input type="checkbox"/>	Coragyps atratus	29-Apr-1907	United States	Texas	Cameron
<input type="checkbox"/>	Coragyps atratus	26-Feb-1951	United States	Florida	Osceola
<input type="checkbox"/>	Coragyps atratus	11-Feb-1951	United States	Florida	Osceola
<input type="checkbox"/>	Coragyps atratus	26-Mar-1933	United States	South Carolina	Greenwood
<input type="checkbox"/>	Coragyps atratus	25-Feb-1930	United States	Florida	Osceola
<input type="checkbox"/>	Coragyps atratus	12-Feb-1905	United States	Texas	Austin
<input type="checkbox"/>	Cygnus olor	15-Apr-1932	United States	California	Santa Barbara County
<input type="checkbox"/>	Dendrocygna bicolor helva	4-Jun-1914	United States	California	Merced County
<input type="checkbox"/>	Dendrocygna bicolor helva	14-Jun-1930	United States	California	Merced County
<input type="checkbox"/>	Egretta caerulea	13-Apr-1957	United States	South Carolina	Charleston
<input type="checkbox"/>	Egretta caerulea	13-Apr-1925	United States	Florida	Orange
<input type="checkbox"/>	Egretta caerulea	25-Apr-1909	United States	Florida	
<input type="checkbox"/>	Egretta rufescens	16-Jun-1932	Mexico	Baja California Sur	
<input type="checkbox"/>	Egretta rufescens	19-May-1929	United States	Texas	
<input type="checkbox"/>	Egretta rufescens	16-Jun-1932	Mexico	Baja California Sur	

[<< previous](#) | [next >>](#)

Collections and Research Online Databases:

[Home](#) | [Anthropology](#) | [Invertebrate Zoology](#) | [The California Beetle Project](#)

Record View

View your selected collection records below.

[Return to Search](#)

For additional information on the Vertebrate Zoology collections and database records or to make an appointment to access the collections please contact:

- Terrestrial Mammals, Reptiles and Amphibians- Paul Collins, Curator of Vertebrate Zoology (pcollins@sbnature2.org; 805-682-4711, ext. 154)
- Birds, Fish - Krista Fahy, Associate Curator of Vertebrate Zoology (kfahy@sbnature2.org; 805-682-4711, ext. 155)
- Marine Mammals - Michelle Berman, Assistant Curator of Vertebrate Zoology (mberman@sbnature2.org; 805-682-4711, ext. 156)

Cygnus olor (Gmelin, 1789)

Collection Object Images:



[Cygnus olor](#)

Catalog Number: AV 20614
Number of Specimens: 6
Specimen preparation: Egg
Date Collected: 15-Apr-1932
Collector: Hunter, Walter
Locality: North America United States California Santa Barbara County Santa Barbara; Hope Ranch
Latitude:
Longitude:
Common Name: mute swan
Phylum: , Class: Aves, Order: Anseriformes, Family: Anatidae

Collections and Research Online Databases:

[Home](#) | [Anthropology](#) | [Invertebrate Zoology](#) | [The California Beetle Project Library](#) | [Maximus Gallery](#) | [Santa Barbara City College](#) | [Vertebrate Zoology](#)
© 2007 [Santa Barbara Museum of Natural History](#)

Vertebrate Zoology database last updated: Dec 04, 2007 14:53:13 PST



Vertebrate Zoology Online Collections Search - [home](#) | [simple search](#) | [advanced search](#) | [about the collection](#)

Collection Object Images

Return to Record View

Cygnus olor (Gmelin, 1789), Catalog Number: AV 20614

Collection Object Images:



[Cygnus olor](#)

Cygnus olor

A.O.U. No. <u>178.2</u>		OOLOGICAL COLLECTION OF LAWRENCE T. STEVENS SANTA BARBARA, CALIFORNIA	Incubation <u>fresh.</u>	
Set Mark <u>1/6</u>			Eggs in Set <u>6</u>	
Name	Scientific	<u>Cygnus</u> <u>Alcedides olor</u>		
	Common	<u>Mute Swan</u>		
Locality <u>Hope Ranch Santa Barbara Co. Calif.</u>				
Date <u>4/15/32</u>		Nest <u>On small island</u>		
<u>in lake. a slight depression in ground</u>				
<u>lined with grasses and down from</u>				
<u>bird. Bird put up quite a fight while</u>				
<u>taking eggs</u>				
Collected by		<u>Walter H. Hunter</u>		

© Santa Barbara Museum of Natural History

Cygnus olor