

# MOLLUSK COLLECTIONS AT THE SANTA BARBARA MUSEUM OF NATURAL HISTORY

Paul Valentich-Scott

Santa Barbara Museum of Natural History, Santa Barbara, California, USA



## Overview

- ❖ Over 2.5 million mollusk specimens
- ❖ Over 2,000 primary mollusk types
- ❖ Three full-time mollusk curators
- ❖ Historic collections dating back to the early-1800's
- ❖ Housed in a modern well-lit facility
- ❖ Comprehensive modern and antiquarian mollusk library
- ❖ Over 100 employees museum-wide
- ❖ Annual operating budget about \$6 million



Expansive space for visiting researchers

## Bivalvia

The Bivalvia collection includes over 80,000 dry and 3,200 wet lots; ~15% of dry, with >95% of the wet holdings digitized. The collection is global, with strong emphasis on the eastern Pacific Ocean and the Indo-West Pacific. The bivalve collection from Panamic Province (Baja California, Mexico, to northern Peru) is among the most extensive available. The SBMNH bivalve collections voucher two recent definitive books on eastern Pacific Bivalvia.



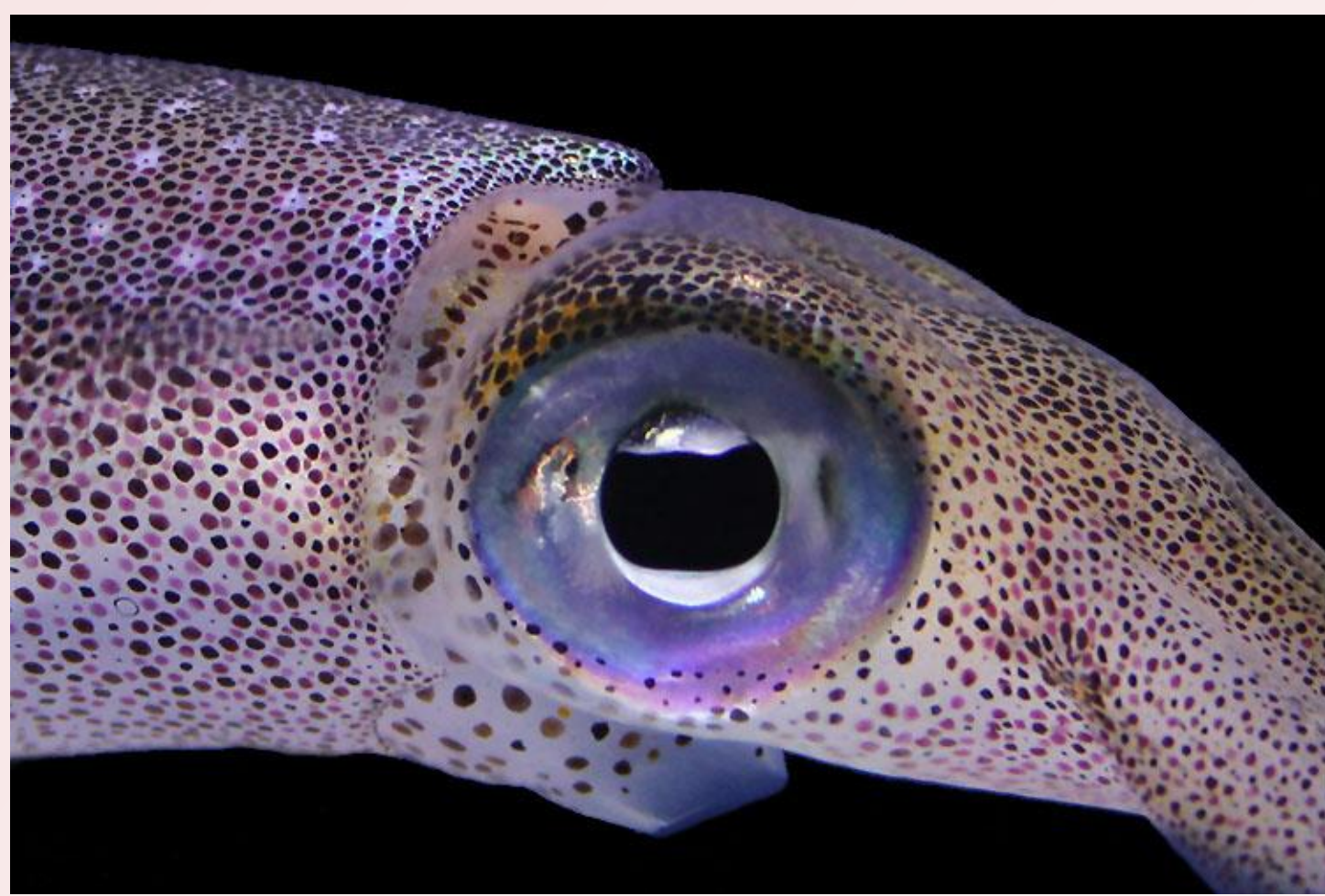
## Gastropoda

The largest and most diverse SBMNH mollusk collection is represented by the Gastropoda. SBMNH houses over 385,000 lots of gastropods, of which 5,000 are preserved in ethyl alcohol. The gastropods are represented by extensive holdings in marine, land and freshwater, all of which are global in extent. The collection contributed to the monumental volumes *Monograph of the Little Slit Shells*.



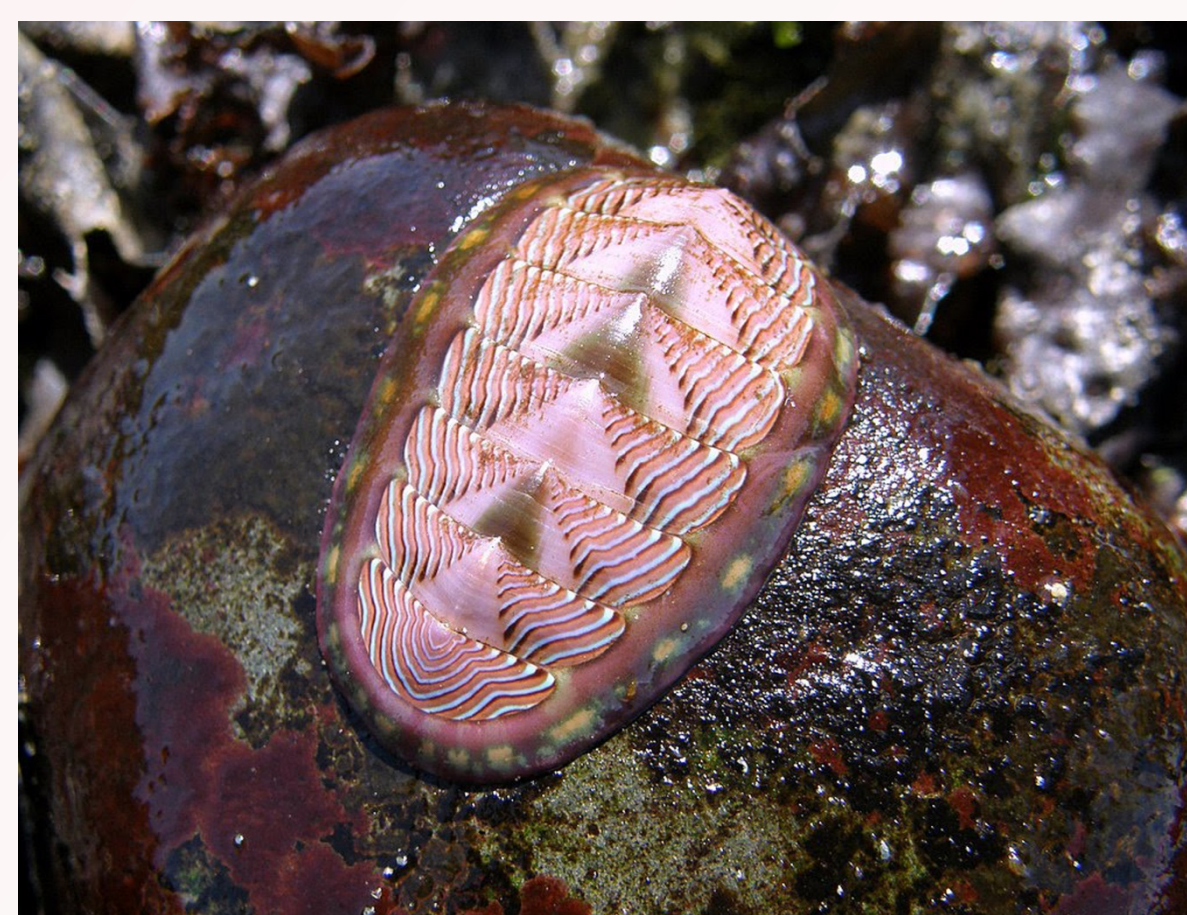
## Cephalopoda

The Cephalopoda collection is among the most diverse and largest in the world, with over 9,300 wet lots. The cephalopod collection is global in extent, with an emphasis on the Pacific Basin; it includes over 100 primary type lots, representing >10% of the known living taxa.



## Polyplacophora

The SBMNH Polyplacophora collection is one of the largest in the world, with 8,900 dry and 9,600 wet lots (62,000 specimens). The chiton collection is global, with strong emphasis on the Pacific. Included are 117 primary type lots (>10% of the known chiton species). The collection has been widely used and cited in current and historic eastern Pacific publications.



## Digitization

- ❖ Over 110,000 lots digitally catalogued
- ❖ Over 57,000 localities
- ❖ Over 97% of localities georeferenced
- ❖ Over 20,000 digital images of collection specimens (mostly not online)
- ❖ Not currently connected to idigbio or other data consolidator
- ❖ Visit our online collection portal at [www.sbcollections.org](http://www.sbcollections.org)

