



FLORIDA
MUSEUM®

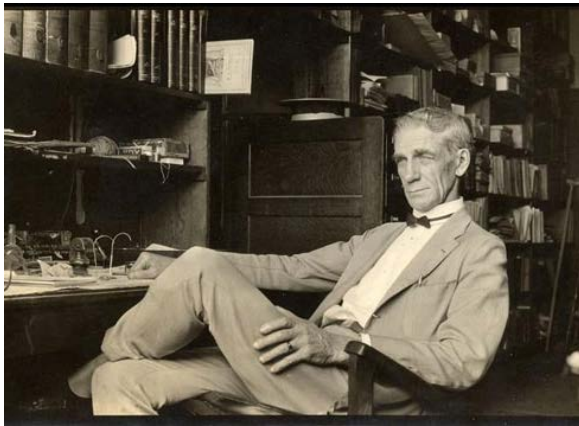
UF | UNIVERSITY *of*
FLORIDA

Invertebrate Zoology at the Florida Museum of Natural History

Spineless Scientists at Work

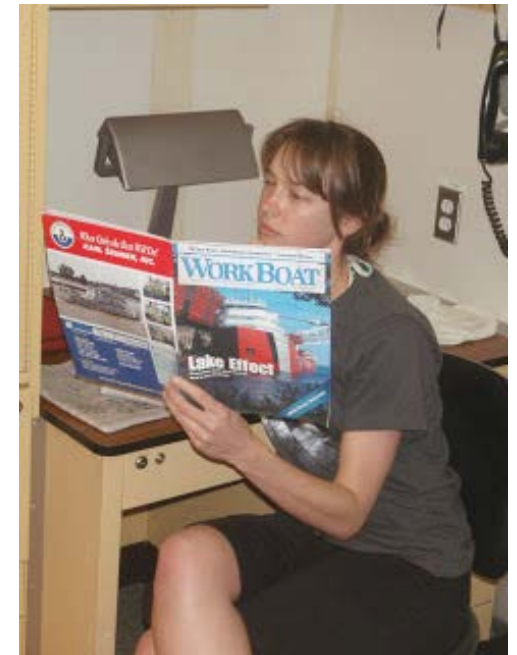
FLMNH History

You're only as old as you feel



Our collections team

Who's responsible for this mess?



About us

Statistically Speaking

Who we are:

608,273 digitized lots (~3.5 million specimens) + 60,000 lots backlog

47,010 species across 25 animal phyla

300,000 images – mostly live, linked to specimens

60,000 tissues

7 volunteers

6 undergrad researchers

4 grad students

60 visiting researchers (499 visitor days) last year

What we do (last year for example):

16398 new records into Specify

14800 records modified/updated

66 loans (14663 specimens)

Fieldwork to Hawaii, New Caledonia, Hong Kong, British Columbia, Bahamas

Collection donations from Harry Lee and Lenore McCullagh

How we grow

Thank you, sir, may I have another?

Fieldwork:

Accounts for 40-50% of growth

Across all taxonomic groups

Mostly wet specimens



Donated/Orphaned Collections:

Accounts for 50-60% of growth

Largely molluscan (shell collections)

Mostly dry specimens

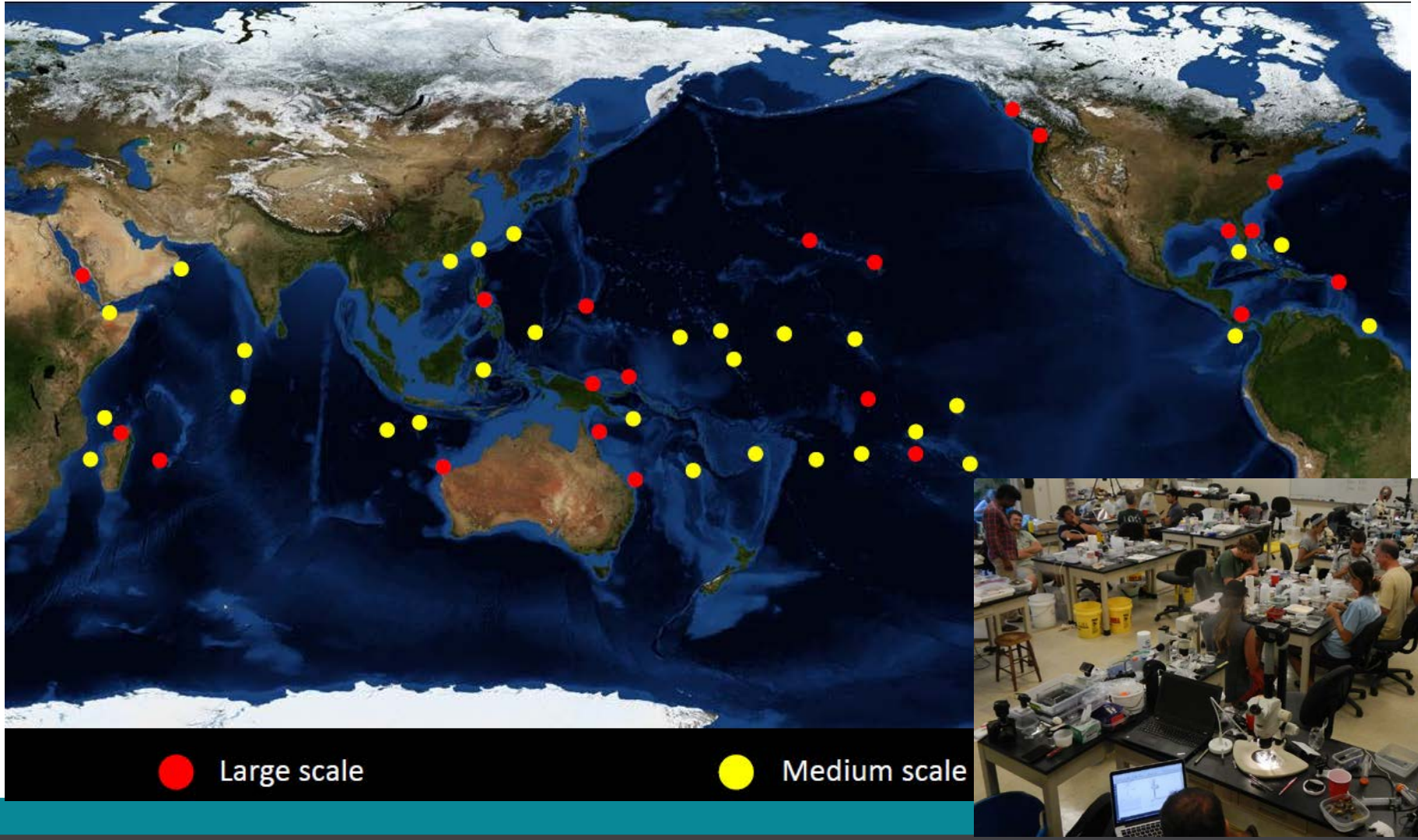


Fieldwork Processes

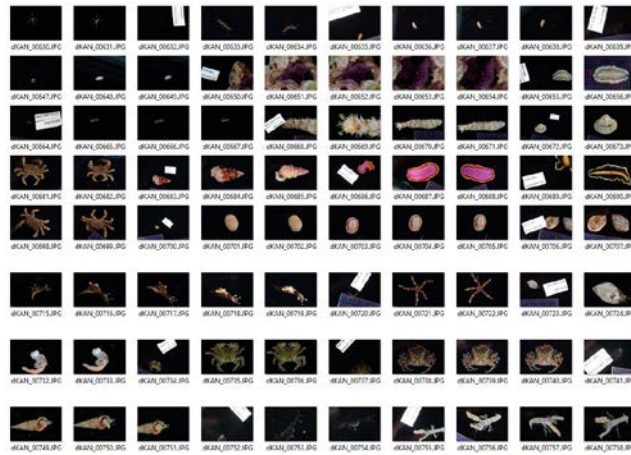
Different than a vacation



Large-scale Biodiversity Surveys



...then back at FLMNH
only slightly less glamorous than fieldwork



Digitization

from *script* to script

- Started in early 1990's
- Field collections digitized within 1 year
- Donated collections digitized with NSF and in house support
- Goal – seamless interconnection of vouchers, tissues, images
- Main challenges
 - databasing of image collection
 - linking sequence data
 - overhauling taxonomic backbone

FM FLORIDA
MUSEUM.®

UF | UNIVERSITY *of*
FLORIDA