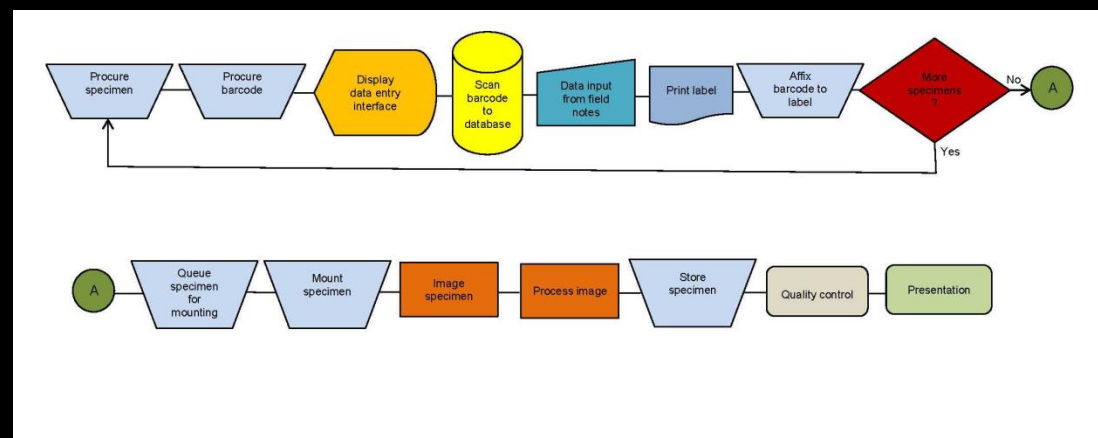
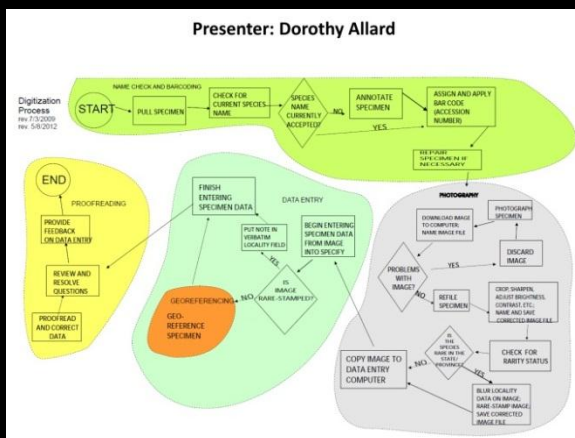


GEOREFERENCING TOOLS AND PRACTICES



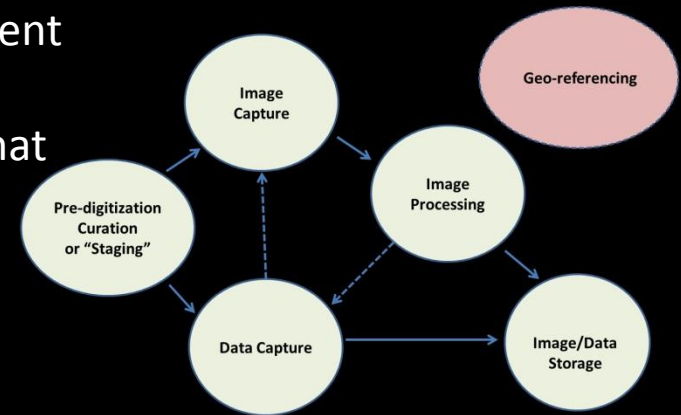
Where does georeferencing fit into the digitization workflow?

- Traditional legacy approach: As complete records are entered, all data, including georeferencing data are determined and entered.
- New collections approach: Due to the prevalence of GPS devices, most modern collection data include georeferencing data which can be entered at the time specimen data area entered. Each collecting station becomes a collecting event that gets named, georeferenced, and entered. Collections at that station are all assigned to the same event and georeferenced as they are entered.



Where does georeferencing fit into the digitization workflow?

- New legacy approach 1: Georeferencing becomes an activity divorced from the initial entry of legacy data and dependent upon collaborative tools that allow records with similar localities to be parsed and pooled by software in a way that they are assigned georeferences in bulk.
- In bulk or individually based on known boundaries of counties, parks, preserves, sections, towns, counties, or other known areas with defined boundaries and known extents. In these cases, georeferencing is to reported accurate to the known extent. Such georeferencing can be built in to the data entry algorithm as a record is saved.



Georeferencing Data Elements

Required:

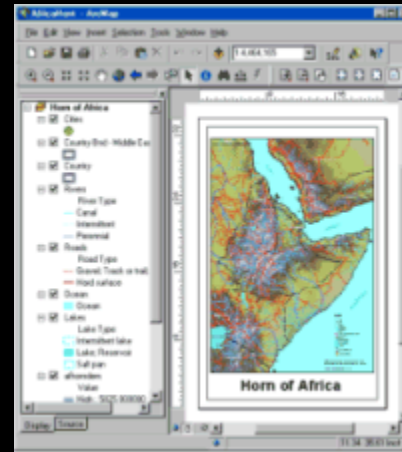
- Latitude (dd.dddd)
- Longitude (dd.dddd)
- Datum (coordinate system)

Desired:

- Precision
- Georeferencing method
- Georeferencing remarks
- Projection

Georeferencing Methods and Tools

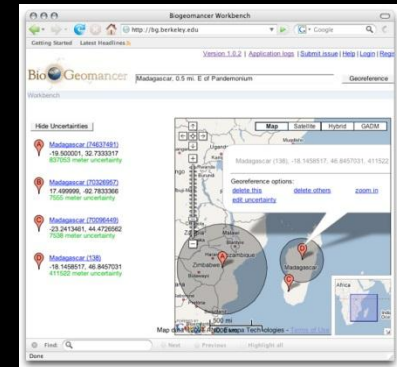
ArcGIS



Google Earth/Maps



Biogeomancer



Geolocate



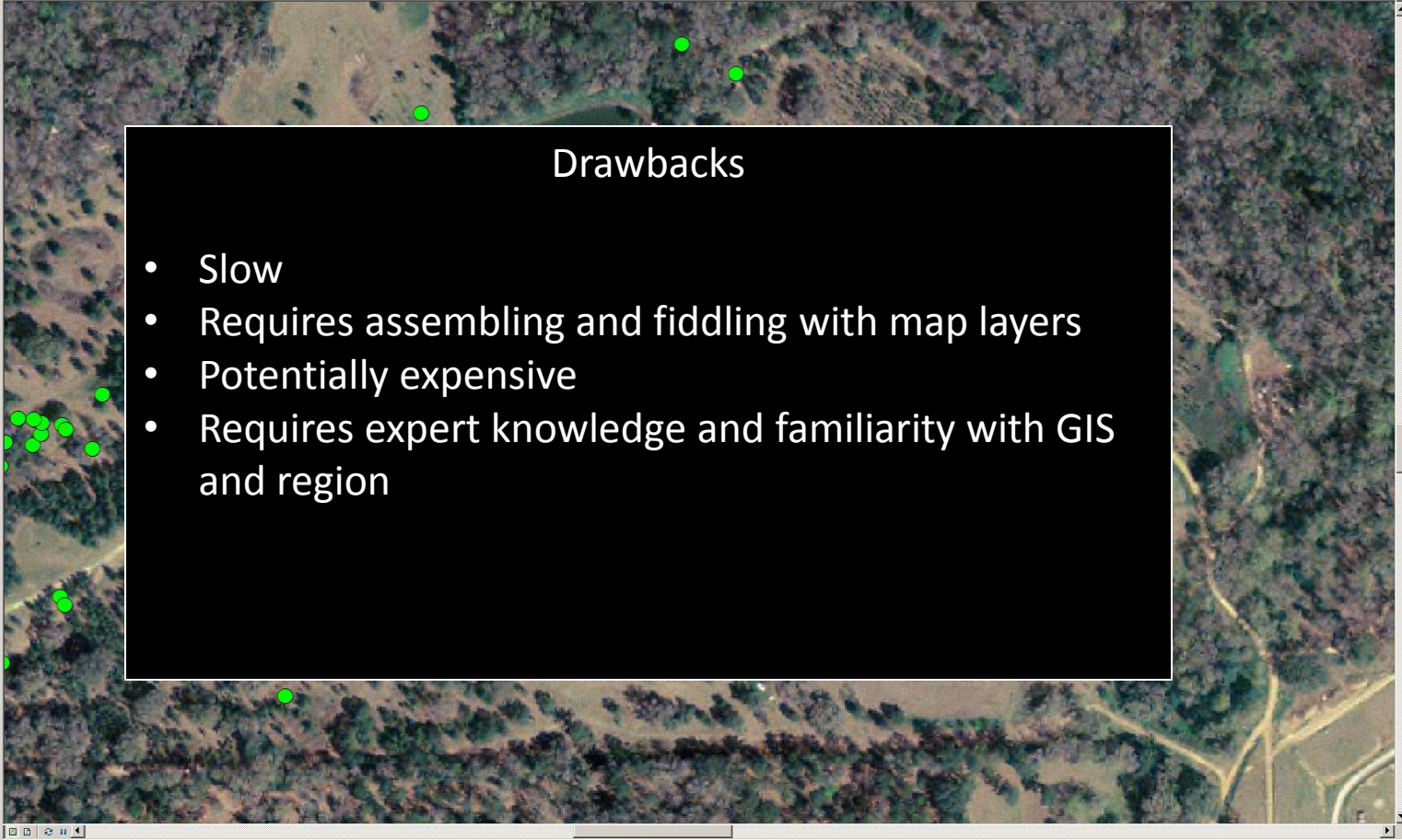
Table Of Contents

- Layers
 - C:\Users\Gill\Documents\FlatwoodsGroup
 - PowerLinePoints_Final
 - PowerLinePoints_2
 - PowerLinePoints
 - C:\Users\Gill\Documents\FlatwoodsGroup\Points_2011-05-
 - Points_2011-05-16-17s Events
 - Points_2011-05-16-17s
 - C:\Users\Gill\Documents\MapData\Powerlines
 - powerlines
 - C:\Data\Maps10\streetmap_na\data
 - citiesmjr.sdc
 - Cities (60m-25m)
 - Cities (25-5m)
 - Cities (5-1.5m)
 - Cities (1.5m-750k)
 - Cities (750-300k)
 - Cities (300-150k)
 - Cities (150-100k)
 - Cities (100-15k)
 - exits.sdc
 - Exits (Numbers) (15k-0)
 - interstates.sdc
 - Major Routes (60-25m)
 - Major Routes (25-5m)
 - Major Routes (5-3m)
 - Interstates (3-1.5m)
 - highways.sdc
 - Highways (3-1.5m)
 - Roads (1.5m-750k)
 - Roads (750-300k)
 - Roads (300-150k)
 - mroads.sdc
 - Roads (150-50k)
 - streetscarto.sdc
 - Roads (50-25k)
 - Roads (25-15k)
 - Roads (15-5k)
 - Roads (5k-0)
 - railroads.sdc
 - Railroads (150-100k)
 - Railroads (100-25k)
 - Railroads (25-15k)
 - Railroads (15-2.5k)



Table Of Contents

- Flower Field
- Timber Oaks
- Longleaf Pine
- Ground Cover Bottom
- Compost
- Seepage
- eden_SNA
- eden_horse_trials
- BurnZones
- Farm Boundary
- eden_essment_bound
- NatureTrail
- AllPoint Events
 - AllPoint
- Q5335ee.sid
- New Data Frame
- C:\Users\Gill\Documents\PhippsFarm\GIS
 - BurnZones
 - farm_boundary
 - eden_roads
- C:\Users\Gill\Documents\MapData\DOQQ\
 - Q5335ee.sid
- C:\DataMaps\10\streetmap_na\data
 - citbesmj_r.sdc
 - Cities (60m-25m)
 - citbes.sdc
 - Cities (25-5m)
 - Cities (5-1.5m)
 - Cities (1.5m-750k)



Drawbacks

- Slow
- Requires assembling and fiddling with map layers
- Potentially expensive
- Requires expert knowledge and familiarity with GIS and region

Search

ex: pizza near NYC

[Get Directions](#) [History](#)

- My Places
- Temporary Places

[Earth Gallery >>](#)

- Primary Database
- Borders and Labels
- Places
- Photos
- Roads
- 3D Buildings
- Ocean
- Weather
- Gallery
- Global Awareness
- More



Data SIO, NOAA, U.S. Navy, NGA, GEBCO
US Dept of State Geographer
© 2012 MapLink/Tele Atlas
© 2012 Google

20°27'27.20" N 53°17'39.94" W elev -16912 ft

Google earth

Eye alt 6835.90 mi

BioGeomancer



BioGeomancer: Semi-automated Georeferencing Engine

<http://bg.berkeley.edu/latest/>

Developed by: John Wieczorek, Aaron Steele, Dave Neufeld, P. Bryan Heidorn, Robert Guralnick, Reed Beaman, Chris Frazier, Paul Flemons, Nelson Rios, Greg Hill, Youjun Guo

Musk rat
Skin and sk
Brachylagus
Canis
Musk rat
*
Brachylagus
*
Musk rat
Brachylagus
*
Musk rat
Brachylagus
Musk rat
Brachylagus
Musk rat
Brachylagus

www.museum.tulane.edu/geolocate/

Collaborative Georeferencing

Home | Standalone App | Java Client | Web Application | Collaborative Georeferencing | Developer Resources | Workshops | Support and Contacts

GEOLocate

A Platform for Georeferencing Natural History Collections Data

For Users:

- Overview
- GEOLocate Web
- GEOLocate 3.xx (standalone)
 - Global Expansion
- GEOLocate 4.xx (java client)
- Collaborative Georeferencing

For Developers:

- Soap Services
- Rest Services (coming soon)
- WMS/WFS Services (coming soon)

Video tutorial on the collaborative georeferencing web client.

Online tutorial

Web Application: Georeference collections data using your web browser. Quick and easy georeferencing.

Web Services: Integrate georeferencing into your own databases and applications using GEOLocate webservice.

Desktop Application: The original standalone desktop application.

Java Client Application: Cross platform Java application. Uses web services for georeferencing.

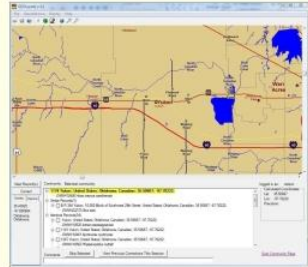
Collaborative Georeferencing: Build communities, share data, relate records across collections and improve verification efficiency.

Currently incorporated into Specify and Symbiota

Collaborative Georeferencing

The goal of this project is to provide a mechanism whereby groups of users can form communities to collaboratively georeference and verify a shared dataset. This collaborative georeferencing framework consists of two end-user components:

1. A client application for reviewing and editing community records. Currently there are 2 applications available for this task:
 - The GEOLocate desktop application
 - The GEOLocate web-based collaborative client (click link to try it out)
2. Web-based data management portal for creating and managing communities, their respective users and data sources



Management portal



Shared community datasets created via the portal may consist of multiple underlying data sources from either live DiGIR providers and/or uploaded text files. Support for TAPIR providers is currently under development. Data are stored using the full Darwin Core 1.2 specification, but subsets and/or alternatives schemas may be imported using the schema mapping interface. During import, data items are automatically normalized, georeferenced and related to one another via a similarity index. This index is used to identify all records that appear to describe the same collection locality regardless of syntax. During coordinate verification, users have the option to re-classify records that were incorrectly related to one another.

Verification and correction of the computer generated geographic coordinates is accomplished using the GEOLocate desktop application. GEOLocate allows users to login to their communities, retrieve and visualize results, make any necessary corrections, provide additional comments, define errors as polygons, and save the results back to the shared dataset. The verified results of georeferencing can then be downloaded via the portal's data management interface for re-import to the parent database.

To examine the gains in efficiency over traditional georeferencing 2100 randomly selected collecting events from the TUMNH fish collection were imported and georeferenced using the collaborative georeferencing framework. The TUMNH fish collection was georeferenced by hand in the mid to late 90's and therefore provides a useful test bed for assessing the efficiency and accuracy of automated methodologies. Of the 2100 records, 30% were

identified as being similar to other records and an additional 33% were duplicates leaving a total of 782 unique locations requiring correction, a 63% reduction in effort overall.

Video Tutorials

Collaborative Georeferencing

Zootera nuda
Lat: 22.521666, Lon: 13.038

GEOLocate: Community Edition

username: password:

GEOLocate: Community Edition

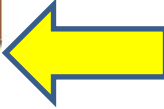
Welcome to the Tulane University Museum of Natural History's Community Edition of GEOLocate. This site along with GEOLocate (version 3 and higher) and DIGIR provider software form the foundation of community-based georeferencing, whereby participants form communities and pool data to maximize efficiency of georeferencing.

Beta testing is now open, so if you are interested in using our software and services for collaborative georeferencing please follow the registration link below. After personal review of your registration information, you will be granted access to the system. Questions or comments may be directed to [Nelson Rios](#)

Registration is free and gives you access to restricted areas of this portal, where you can join or create a community. [Read more about us.](#)

↑ Top of page.

© 2012 Collaborative Georeferencing
Last updated February, 2012



Sign in

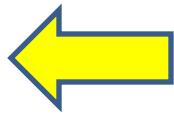


Communities List | [Create Communities](#) | [Join Communities](#) | [Account Settings](#)

Select a community and click "GO TO COMMUNITY" to navigate to that community's page. The communities you own are marked with "*".

Ann Johnson *
Helen Roth *
Robin and Pat *
Rhynchospora1 *
Duval *

[GO TO COMMUNITY](#)



Communities



- Home
- About Us
- Contact Us
- My Communities
- Portal Tutorial

Community: Duval

Data Sources | **Members** | Email | Settings

Data source management operations

- Add new community data source via DIGIR
- Add new community data source via CSV files

Click on an item's header to expand/collapse its content.

<input checked="" type="checkbox"/> community-wide	
<input checked="" type="checkbox"/> Duval1	date added: Wednesday, June 27, 2012
<input checked="" type="checkbox"/> Clay1	date added: Wednesday, July 04, 2012
<input checked="" type="checkbox"/> Clay2	date added: Monday, July 09, 2012
<input checked="" type="checkbox"/> Duval2	date added: Monday, July 09, 2012
<input checked="" type="checkbox"/> Nassau1	date added: Sunday, July 29, 2012

Add a data source

Data sources

↑ Top of page.



- Home
- About Us
- Contact Us
- My Communities
- Portal Tutorial

Community: Duval

Data Sources | **Members** | Member Email | Settings

Data source management operations

- Add new community data source via DiGIR
- Add new community data source via CSV files

Click on an item's header to expand/collapse its content.

✓ community-wide	
✓ Duval1	date added: Wednesday, June 27, 2012
✓ Clay1	date added: Wednesday, July 04, 2012

Secondary name: Clay1

Path: drive

Type: csv

Owner: [redacted]

Number of records: 50

Status: cached

Task: UPDATE CACHE | VIEW CACHE

Records statistics:

- Total corrected specimen records community-wide: 753
- 50 corrected in this data source
- Total corrected locality records community-wide: 618
- 47 corrected in this data source

Clav2 | date added: Monday, July 09, 2012

Settings tab

- Do Uncertainty -- enabled.
- Do Error Polygon -- enabled.
- Displace Polygon -- enabled.
- Language -- English

Edit:

Match Water Body Detect Hwy/River Crossing Restrict to lowest Adm. Unit

Do Uncertainty Do Error Polygon Displace Polygon

Language:

- Privacy setting:
- private.

Edit:

public: any user can join your community.

restricted: users send you requests to join your community.

private: only users you invite can join your community.

Description:

-

Edit:

Your search query:

- You are restricted to Nassau1.

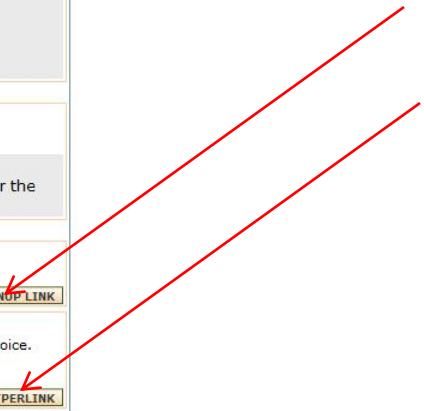
Edit:

To edit a user's search query, use the "Define users working dataset" interface under the "Members" tab.

Use this easy signup link to send a auto-join invite to users:
<http://www.museum.tulane.edu/coge/WebComEasySignUp.aspx?ajc=FCE69B52>

Enable hyperlinks on data source records:
base link format: "http://domain.com?<key>=" where <key> is a parameter key of your choice.

Nassau1: [http://herbarium.bio.fsu.edu/view-specimen.php?RecordID=\[CollectionCode\]](http://herbarium.bio.fsu.edu/view-specimen.php?RecordID=[CollectionCode])



Welcome gnelson, member since 1/29/2012. | LOGOUT

Community: Duval

- Home
- About Us
- Contact Us
- My Communities
- Portal Tutorial

Data Sources **Members** **Member Email** **Settings**

User management operations

- Define users working dataset
- Change users community access
- Invite users to this community

To define a working dataset, select the search parameters and users below, then click "SUBMIT CHANGES".
Use [CTRL]+click to select multiple.

Search Criteria

Community data sources:

--ALL--
Duval1
Clay1
Clay2
Duval2
Nassau1

States/Provinces:

--ALL--
Florida
Georgia

Countries:

--ALL--
United States

Countries:

--ALL--
Clay
Duval
Nassau

Community members:

gnelson (Gil Nelson)
KristenPapa (Kristen Papa)

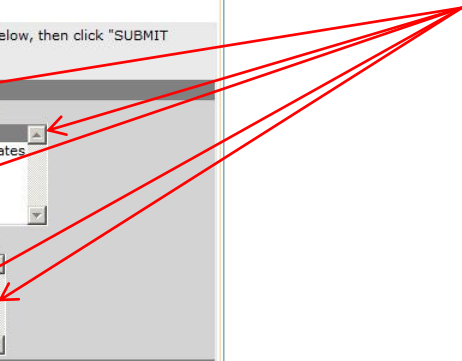
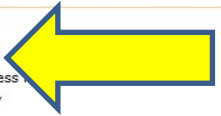
Selected members queries, consolidated:
No community members selected.

Selected Members Queries:

Members	Data sources	Countries	States/Provinces	Counties
No community members selected.				

HIDE FORM CLEAR FORM SUBMIT CHANGES

Define user's dataset



Collaborative Georeferencing

The goal of this project is to provide a mechanism whereby groups of users can form communities to collaboratively georeference and verify a shared dataset. This collaborative georeferencing framework consists of two end-user components:

1. A client application for reviewing and editing community records. Currently there are 2 applications available for this task:
 - o The GEOLocate desktop application
 - o The GEOLocate web-based collaborative client (click link to try it out)Web-based data management portal for creating and managing communities, their respective users and data sources

Web client



Shared community datasets created via the portal may consist of multiple underlying data sources from either live DiGIR providers and/or uploaded text files. Support for TAPIR providers is currently under development. Data are stored using the full Darwin Core 1.2 specification, but subsets and/or alternatives schemas may be imported using the schema mapping interface. During import, data items are automatically normalized, georeferenced and related to one another via a similarity index. This index is used to identify all records that appear to describe the same collection locality regardless of syntax. During coordinate verification, users have the option to re-classify records that were incorrectly related to one another.

Verification and correction of the computer generated geographic coordinates is accomplished using the GEOLocate desktop application. GEOLocate allows users to login to their communities, retrieve and visualize results, make any necessary corrections, provide additional comments, define errors as polygons, and save the results back to the shared dataset. The verified results of georeferencing can then be downloaded via the portal's data management interface for re-import to the parent database.

To examine the gains in efficiency over traditional georeferencing 2100 randomly selected collecting events from the TUMNH fish collection were imported and georeferenced using the collaborative georeferencing framework. The TUMNH fish collection was georeferenced by hand in the mid to late 90's and therefore provides a useful test bed for assessing the efficiency and accuracy of automated methodologies. Of the 2100 records, 30% were

identified as being similar to other records and an additional 33% were duplicates leaving a total of 782 unique locations requiring correction, a 63% reduction in effort overall.

Video Tutorials

www.museum.tulane.edu/geolocate/web/webcomgeoref.aspx

Home | Standalone App | Java Client | Web Application | Collaborative Georeferencing | Developer Resources | Workshops | Support and Contacts

GEOLocate Collaborative Georeferencing Web Client (BETA) ?

1000 km
500 mi
Map data ©2012 Google, INEGI, MapLink, Tele Atlas

Correct locality records

Available communities (check name to set):

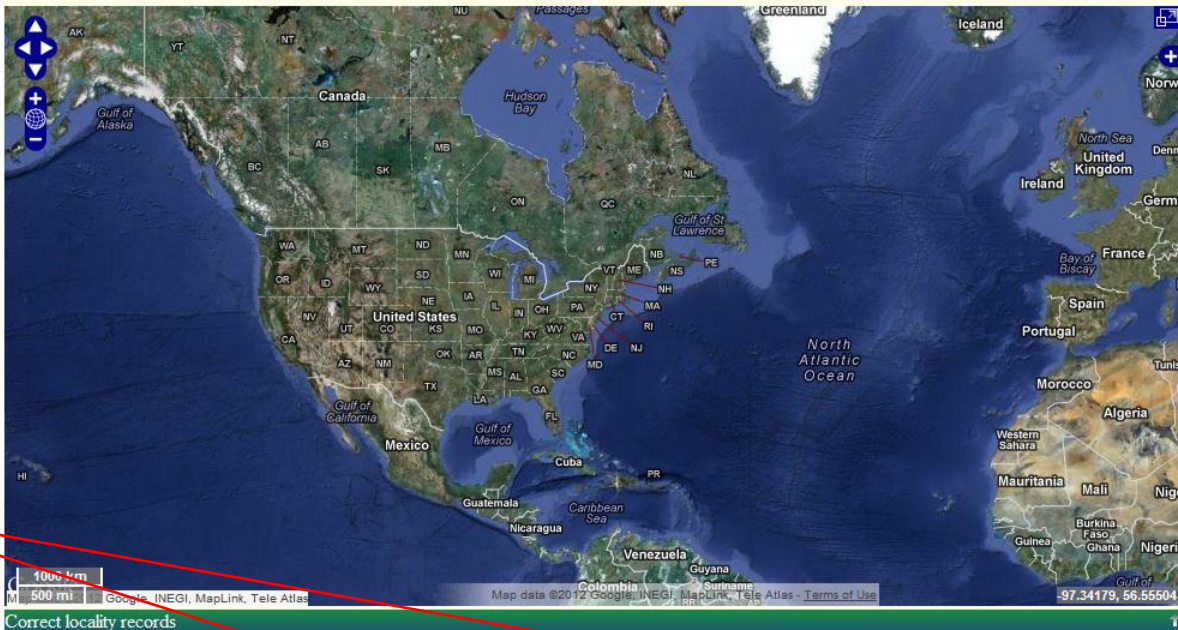
Data sources in selected community:

Username:

Password:

8:24 AM
8/10/2012

Login with same credentials as the management portal



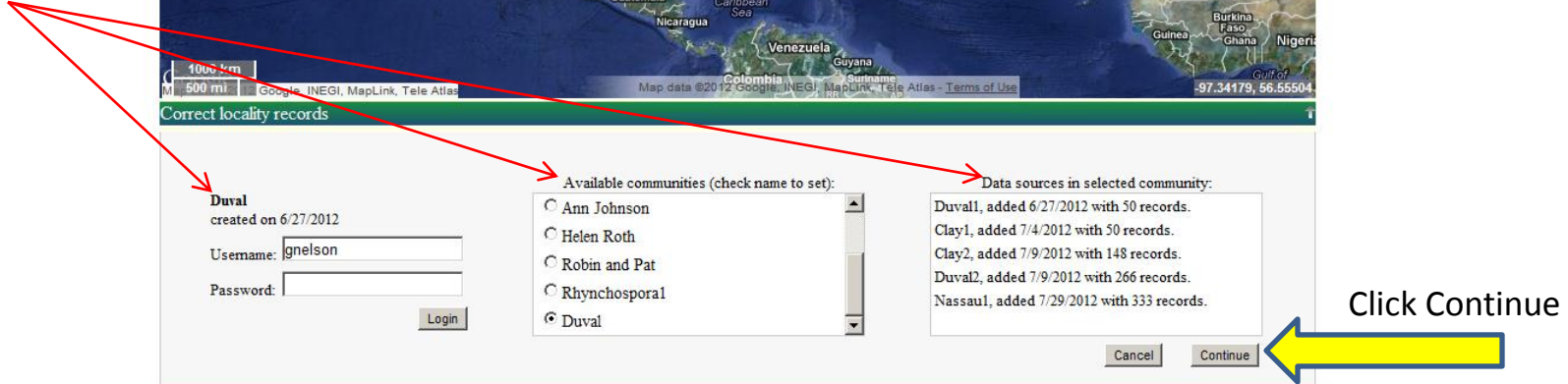
Correct locality records

Duval
created on 6/27/2012
Username:
Password:

- Available communities (check name to set):
- Ann Johnson
 - Helen Roth
 - Robin and Pat
 - Rhynchosporal
 - Duval

Data sources in selected community:

Duval1, added 6/27/2012 with 50 records.
Clay1, added 7/4/2012 with 50 records.
Clay2, added 7/9/2012 with 148 records.
Duval2, added 7/9/2012 with 266 records.
Nassau1, added 7/29/2012 with 333 records.



Click Continue

Results

1 possible location(s) found.



Click the specimen id to access the original record.

Correct locality records

Community: Duval

Drawford Vicinity of Drawford. Pine flatwoods.; United States; Florida; Nassau; 30.34722; -84.98028;

~~327462~~ *Scleria triglomerata*

Similar Records(0)

Identical Records(0)

Locality string

Taxon being georeferenced

Place marker Measure

Draw polygon

logged in as: gnelson

Calculated Coordinates

Lat: 30.34722
Lon: -84.98028
U. Radius: 3036 m

Manual Edit

1 possible location(s) found.



SEARCH FLORIDA STATE

FSU Biology

Search

GO



[Herbarium Main Page](#)

[People](#)

[Projects](#)

[Contact Information](#)

[Loans and Exchanges](#)

[Visits](#)

[Volunteer](#)

[Friends](#)

[Robert K. Godfrey](#)

[Links](#)

[Database](#)

[Login](#)



Specimen Details

[Report a Problem](#)

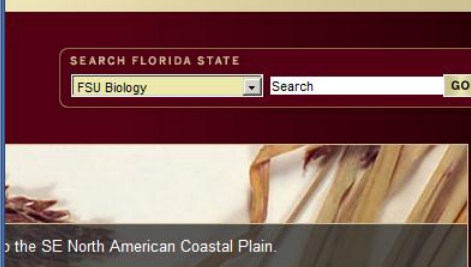
Species: *Scleria triglomerata*
Collection Date: June 2, 1958
Bar Code ID: 000027481
Collectors: R.K. Godfrey, William Lindsey
Collector's Identifier: 56898
Flower Buds Present?: True
Flowers Present?: True
Fruit Present?: True
Country: United States
State or Province: Florida
County or Parish: Nassau
Fips Code: 12089
Nearest Named Place: Drawford
Verbatim Directions to Locality: Vicinity of Drawford.
Habitat: Pine flatwoods.
Non digital information?: N



[View Image](#) [View JPEG](#)
[Download JPEG \(1.35 MB\)](#)
[Download TIFF \(30.83 MB\)](#)

Identification Records

Identifier's Name: R. K. G.
Formal Identification Date: 1958-06-02
Lowest Rank Identified: Species
Identification History: *Scleria triglomerata* Michx.
Determinavit: det.



Details

Problem

View Image View JPEG
Download JPEG (1.35 MB)
Download TIFF (30.83 MB)

ords

LENGTH SKILL CHARACTER STRENGTH SKILL CHARACTER STRENGTH SKILL CHARACTER STRENGTH SKILL CHARACTER STRENGTH SKILL CHARACTER STRENGTH SKILL CHARACTER

1 possible location(s) found.



Full screen
Map layers

Correct locality records

Community: Duval

Drawford Vicinity of Drawford. Pine flatwoods.; United States; Florida; Nassau; 30.34722; -84.98028;

527481 *Scleria triglomerata*

Similar Records(0)

Identical Records(0)

- Next Record(s)
- Correct
- Skip Selected
- Add Comments
- Logout

Place marker Measure

Draw polygon

logged in as: gnelson

Calculated Coordinates

Lat: 30.34722
Lon: -84.98028
U. Radius: 3036 m

Manual Edit

1 possible location(s) found.



Hide data fields

Correct locality records

Community: Duval

Drawford Vicinity of Drawford. Pine flatwoods.; United States; Florida; Nassau; 30.34722; -84.98028;

Next Record(s)

Correct

Skip Selected

Add Comments

Logout

527481 *Scleria triglomerata*

Similar Records(0)

Identical Records(0)

Place marker Measure

Draw polygon

logged in as: gnelson

Calculated Coordinates

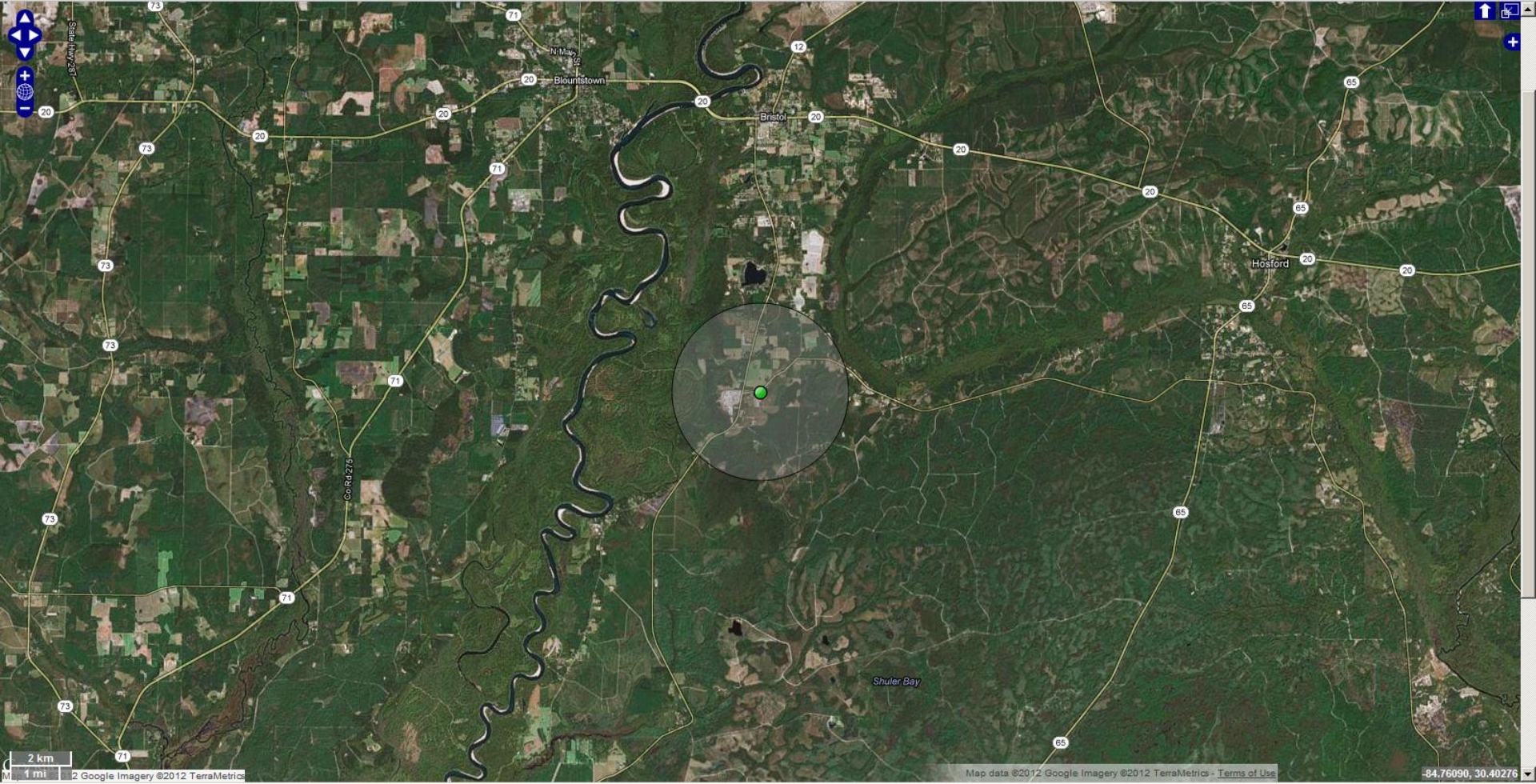
Lat: 30.34722

Lon: -84.98028

U. Radius: 3036 m

Manual Edit

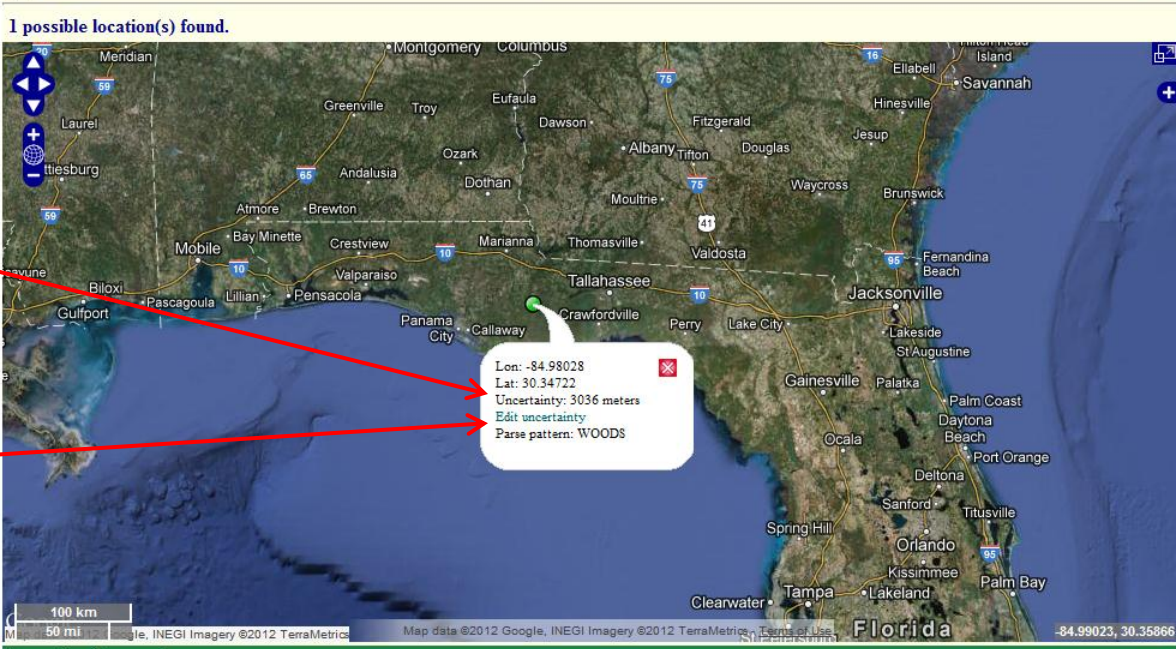
1 possible location(s) found.



2 km
1 mi

Map data ©2012 Google Imagery ©2012 TerraMetrics - Terms of Use

-84.76090, 30.40276



Uncertainty

Edit
uncertainty

Correct locality records

Community: Duval

Drawford Vicinity of Drawford. Pine flatwoods.; United States; Florida; Nassau; 30.34722; -84.98028;

527481 *Scleria triglomerata*

Similar Records(0)

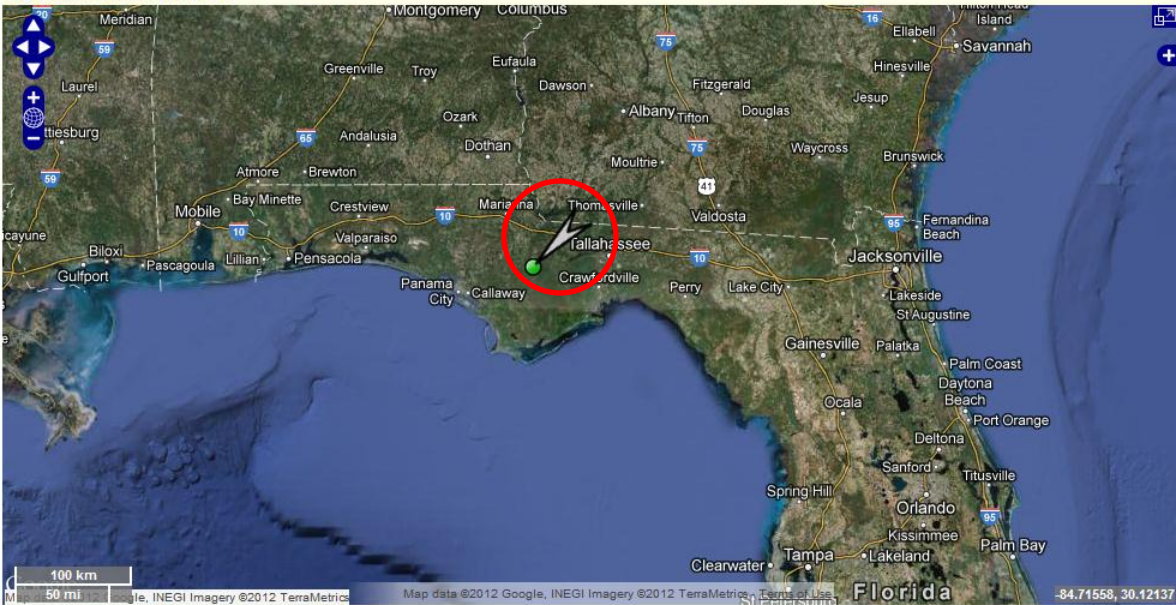
Identical Records(0)

Next Record(s)
Correct
Skip Selected
Add Comments
Logout

Place marker Measure
Draw polygon
logged in as: gnelson
Calculated Coordinates
Lat: 30.34722
Lon: -84.98028
U. Radius: 3036 m
Manual Edit

1 possible location(s) found.

1 possible location(s) found.



Correct locality records

Community: Duval

Drawford Vicinity of Drawford. Pine flatwoods.; United States; Florida; Nassau; 30.34722; -84.98028;

527481 *Scleria triglomerata*

Similar Records(0)

Identical Records(0)

- Next Record(s)
- Correct
- Skip Selected
- Add Comments
- Logout

Place marker Measure

Draw polygon

logged in as: gnelson

Calculated Coordinates

Lat: 30.34722
Lon: -84.98028
U. Radius: 3036 m

Manual Edit

1 possible location(s) found.

Drag the arrow to increase or decrease the circle of uncertainty.

1 possible location(s) found.

Correct locality records

Community: Duval

Drawford Vicinity of Drawford. Pine flatwoods.; United States; Florida; Nassau; 30.34722; -84.98028;

527481 *Scleria triglomerata*

Similar Records(0)

Identical Records(0)

Next Record(s)

Correct

Skip Selected

Add Comments

Logout

Place marker Measure

Draw polygon

logged in as: gnelson

Calculated Coordinates

Lat: 30.34722

Lon: -84.98028

U. Radius: 69163 m

Manual Edit

1 possible location(s) found.

Determining uncertainty can be subjective and is not always easy. Effectively, georeferencers should strive to use physical features to draw their circle or polygon. Such features might include roads, city or park boundaries, landscape features (lakes, bogs, habitat signatures, etc.), and other known demarcations. Attend additional trainings and establish institutionally specific policies and protocols, which may include manifest estimates of confidence.

Welcome gnelson, member since 1/29/2012. | LOGOUT

Community: Duval

- Data Sources
- Members
- Member Email
- Settings

Data source management operations

- Add new community data source via DiGIR
- Add new community data source via CSV files

Click on an item's header to expand/collapse its content.

community-wide	
✓ Duval1	date added: Wednesday, June 27, 2012
Secondary name:	Duval1
Path:	drive
Type:	csv
Owner:	you
Number of records:	50
Status:	cached
Task:	UPDATE CACHE VIEW CACHE
Records statistics:	VIEW CORRECTIONS
	Total corrected specimen records community-wide: 753
	40 corrected in this data source
	Total corrected locality records community-wide: 618
	22 corrected in this data source
✓ Clay1	date added: Wednesday, July 04, 2012
✓ Clay2	date added: Monday, July 09, 2012
✓ Duval2	date added: Monday, July 09, 2012
✓ Nassau1	date added: Sunday, July 29, 2012

← View corrections

- Home
- About Us
- Contact Us
- My Communities
- Portal Tutorial

↑ Top of page.

Welcome gnelson, member since 1/29/2012. | LOGOUT

Community: Duval

CoGe: Corrections details for the "Duval1" data source - Google Chrome

Showing 1 to 40 of 40. [DOWNLOAD CORRECTIONS](#)

← Download corrections

Download format: CSV

KML

- include error polygons
- exclude error polygons over 10k characters
- exclude all error polygons

Note: all checked columns will be downloaded.

Correction identifier	Community name	Data source name	Corrected by	Corrected on	Corrected longitude	Corrected latitude	Corrected uncertainty radius	Corrected error polygon
7054	Duval	Duval1	KristenPapa	7/3/2012 8:06:43 AM	-81.404831	30.279913	3368	30.2627280115,-81.3829959111,30.2563930115,-81.3813609111,30.2529540115,-81.3813609111,30.2563930115,30.2627280115,30.279913,30.2627280115
+ 1					6324			5652
+ 1					6323			5651
+ 1					6322			5650
+ 1					6286			5507
+ 1					6285			5506
+ 1					6284			5505
+ 1					6283			5504
+ 1					6282			5503
+ 1					6281			5502
+ 1					6280			5501
+ 1					6279			5500
+ 1					6276			5649
+ 1					6275			5648

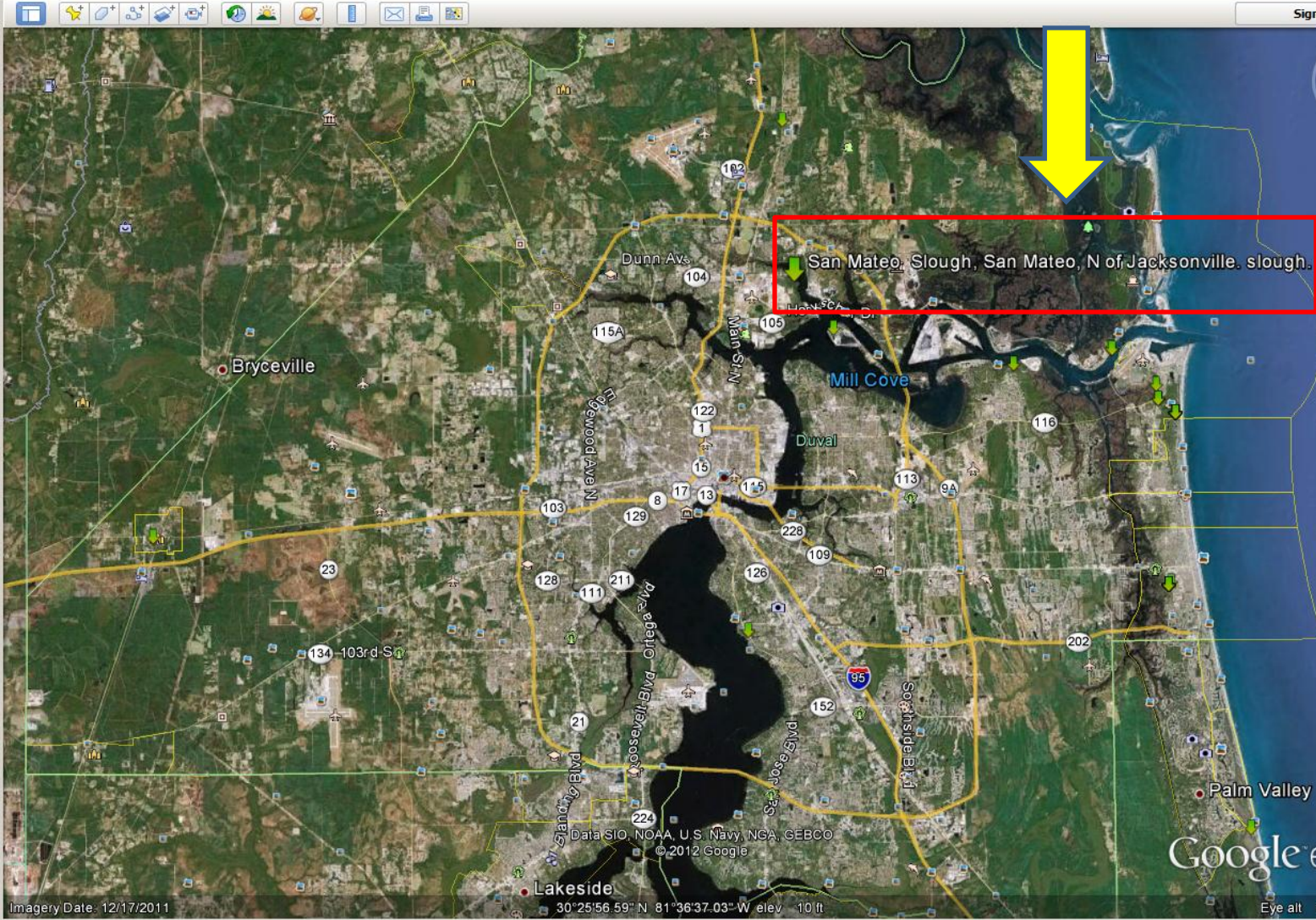
- ✓ Clay2 date added: Wednesday, July 04, 2012
- ✓ Clay2 date added: Monday, July 09, 2012
- ✓ Duval2 date added: Monday, July 09, 2012
- ✓ Nassau1 date added: Sunday, July 29, 2012

↑ Top of page.

Search
Search
ex: pizza near NYC
Get Directions History

- Places
- My Places
 - Temporary Places
 - corrections.kml

- Layers
- Earth Gallery >>
- Primary Database
 - Borders and Labels
 - Places
 - Photos
 - Roads
 - 3D Buildings
 - Ocean
 - Weather
 - Gallery
 - Global Awareness
 - More



Imagery Date: 12/17/2011

30°25'56.59" N 81°36'37.03" W elev 10 ft

Google Earth

Eye alt

Community: Duval

Welcome gnelson, member since 1/29/2012. | LOGOUT

CoGe: Corrections details for the "Duval1" data source - Google Chrome

Showing 1 to 40 of 40. **DOWNLOAD CORRECTIONS** ← Download corrections

Download format: CSV KML

- include error polygons
- exclude error polygons over 10k characters
- exclude all error polygons

Note: all checked columns will be downloaded.

<input checked="" type="checkbox"/> InstitutionCode	<input checked="" type="checkbox"/> CollectionCode	<input checked="" type="checkbox"/> CatalogNumber
---	--	---

Correction identifier	Community name	Data source name	Corrected by	Corrected on	Corrected longitude	Corrected latitude	Corrected uncertainty radius	Corrected error polygon
7054	Duval	Duval1	KristenPapa	7/3/2012 8:06:43 AM	-81.404831	30.279913	3368	30.2627280115,-81.3829959111,30.2563930115,-81.3813609111,30.2529540115,-81.3813609111,30.2563930115,-81.3829959111,30.2627280115
+ 1					6324			5652
+ 1					6323			5651
+ 1					6322			5650
+ 1					6286			5507
+ 1					6285			5506
+ 1					6284			5505
+ 1					6283			5504
+ 1					6282			5503
+ 1					6281			5502
+ 1					6280			5501
+ 1					6279			5500
+ 1					6276			5649
+ 1					6275			5648

GOAL: Import corrections into collections database.

Polygon data

- ✓ Clay2 date added: Wednesday, July 04, 2012
- ✓ Clay2 date added: Monday, July 09, 2012
- ✓ Duval2 date added: Monday, July 09, 2012
- ✓ Nassau1 date added: Sunday, July 29, 2012

↑ Top of page.



iDigBio
Integrated Digitized Biocollections