



What is digitisation

Greg Riccardi

Florida State University

iDigBio

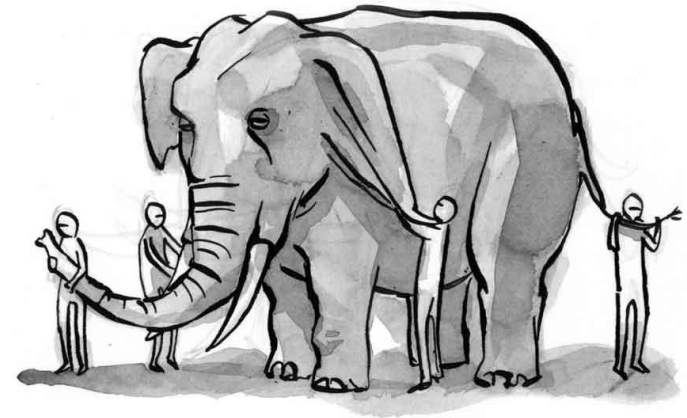


iDigBio is funded by a grant from the National Science Foundation's Advancing Digitization of Biodiversity Collections Program (Cooperative Agreement EF-1115210). Any opinions, findings, and conclusions or recommendations expressed in this material are those of the author(s) and do not necessarily reflect the views of the National Science Foundation. All images used with permission or are free from copyright.



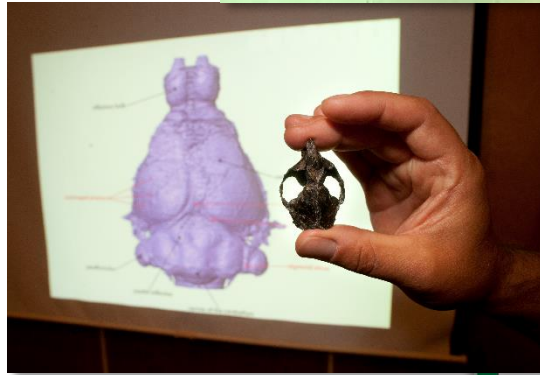
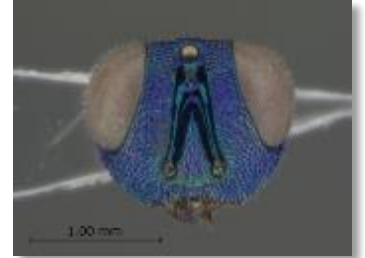
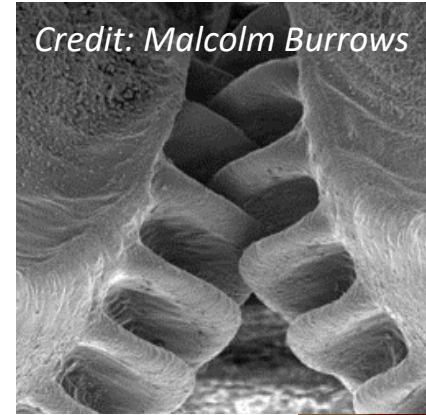
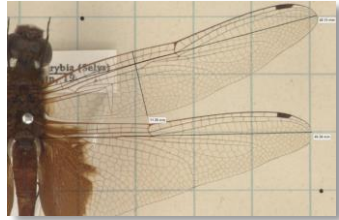
Overview

- Some ideas from US digitisation project
- What to digitize
- How are digital records of specimens identified
- How are uses of specimens tracked





Images related to digitisation





Community Building

Search

search all fields

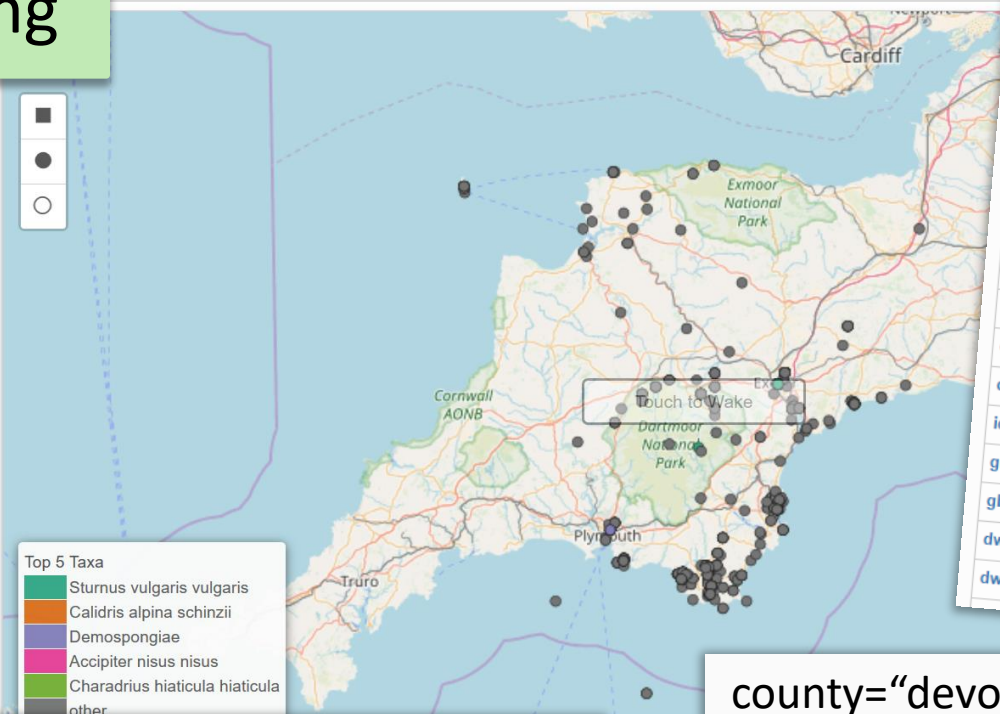
Must have media Must have map point

Filters Mapping Sorting Download

Add a field Clear

County/Parish Present Missing

Country Present Missing



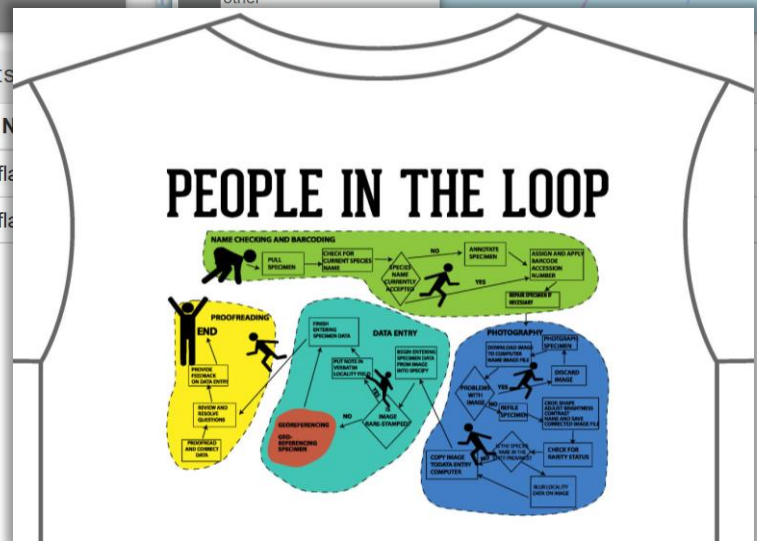
county="devon"
2,124

Flag
dwc_datasetid_added
dwc_parentnameusageid_added
dwc_taxonid_added
dwc_taxonomicstatus_added
gbif_canonicalname_added
gbif_genericname_added
gbif_taxon_corrected
dwc_taxonrank_added
dwc_kingdom_added
idigbio_isocountrycode_added
gbif_reference_added
gbif_vernacularname_added
dwc_phylum_added
dwc_multimedia_added

- Activities**
- Digitization
 - Workflows**
 - Protocols
 - Task Clusters
 - Dissemination

- Research Use**
- Tool collaboration
 - Portal development
 - ENM workshop
 - Research Spotlight
 - Data quality**

- Methods**
- Workshops
 - Webinars
 - Symposia
 - Conferences
 - Working Groups
 - Short Courses
 - Adobe Connect
 - Listservs
 - Publications
 - Social Media



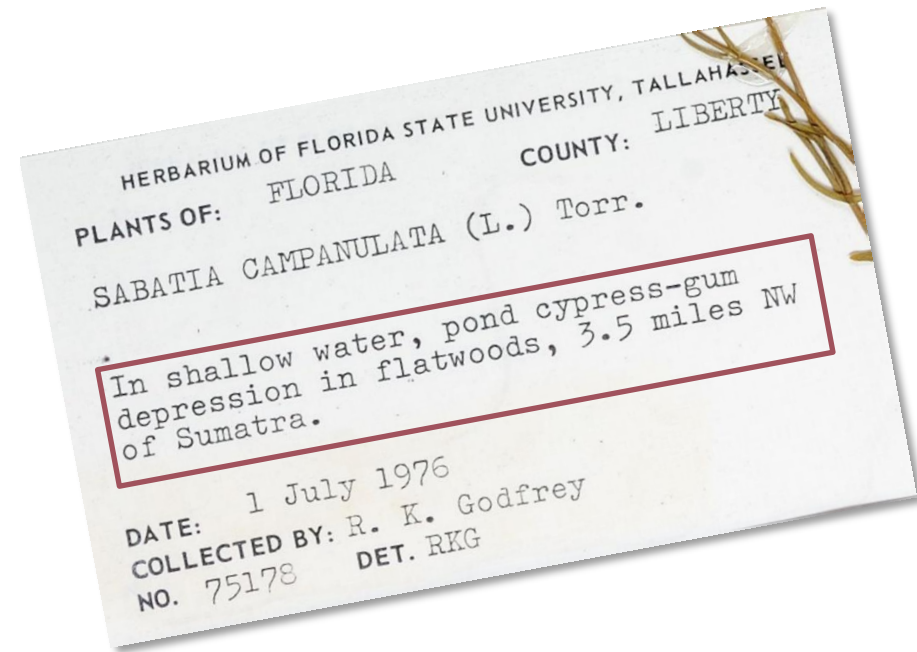
Country	Collection Code
United Kingdom	Education Outreach
United Kingdom	Citizen Science
	K-12 materials
	Undergraduate
	Fossil Clubs
	Mentor teachers

- Training**
- Biodiversity data skills
 - Data literacy
 - Collections software
 - Imaging
 - Project Management



What, where, when

- Primary goal is to capture data about specimens
- What
 - Scientific name
- Where
 - Location of collection
 - Geolocation
- When
 - Date of collection
 - Accuracy of date?





Media records

- Photographs
 - Easy for herbarium sheets
 - Pinned insects
 - Stuff in jars
- Audio
 - Animal communications signals (TCN)
- 3-d images
 - Optical
 - MRI (note new TCN)



Discovery and attribution

- Globally unique identifiers
- Identifiers travel with data and link back to specimen in collection
- Aggregators (e.g. GBIF)
 - Keep identifiers with data records
 - Provide link back to provider
 - Allow search for data associated with identifier
- Identifiers are used for associations
 - This bug was found eating this plant



Thanks for your attention



www.idigbio.org



facebook.com/iDigBio



twitter.com/iDigBio



vimeo.com/idigbio



idigbio.org/rss-feed.xml



webcal://www.idigbio.org/events-calendar/export.ics

