

The background of the slide is a close-up photograph of several water beetles pinned to a light-colored surface. The beetles are dark in color, and their legs and antennae are visible. Some of the pins are black and have small white labels attached to them. The overall lighting is warm and slightly dim, creating a sense of a museum or laboratory setting.

HIDDEN WATER BEETLES AT THE FIELD MUSEUM OF NATURAL HISTORY

Crystal A. Maier
Collection Manager, Insects



Open 9am – 5pm every day
except Christmas

- Get Directions
- Buy Tickets
- Membership Info
- Make a Gift
- The Museum Store

- EXHIBITIONS & EVENTS
- PLAN YOUR VISIT
- SCIENCE
- LEARNING CENTER
- SUPPORT THE MUSEUM

- ABOUT THE MUSEUM

+View Details

Director, Gantz Family Collections Center

Location: Chicago , IL

The Field Museum collections are among the top natural history collections in the world for their breadth, scope, and quality. The Field is one of the few institutions with collections that cover planetary origins and the full history of life on Earth with botanical, zoological, geological, and anthropological specimens and artifacts. The Museum's strategy in **Science and Education** (S&E) creates a strong opportunity for the Museum to increase the impact of its collections.


The Director of The Field Museum's **Collections Center** (the *Gantz Family Collections Center*) will expand and shape the role that these collections play in global efforts to explore the past, understand the present, and ensure a future rich with biological and cultural diversity. The Director focuses the strategic growth of the collections, broadening their relevance and increasing their accessibility. This leadership position provides general oversight for the Museum's holdings of close to 30 million specimens and objects, in addition to the library and archive collections. The Director works closely with the Center's leadership (heads of the Anthropological, Botanical, Geological, Zoological, and Library collections) to supervise personnel in collections management, oversee collections-related policies and procedures, and develop the Center's annual budget. The Director will have active programs in one or more of the Museum's collection areas, interact with members of the other S&E centers on collaborative initiatives, and develop strong ties with academic institutions locally and worldwide

This position reports to the Vice President of S&E and works as part of a team with the Directors of the **Integrative Research**, **Science Action**, and **Learning** centers to set the vision and agenda for Science and Education at The Field Museum.

Duties and Responsibilities

Provides strategic vision and direction for the *Gantz Family Collections Center* by:

- making museum collections more relevant to research, conservation action, and learning worldwide;
- identifying and promoting priorities for Field Museum collections in consultation with S&E leadership and committees of the Board of Trustees;
- developing and overseeing implementation of innovative approaches for increasing accessibility;



Field Museum Insect Collection
16 MILLION INSECT
SPECIMENS



STAPHYLINIDAE
COLLECTION



STRECKER COLLECTION OF LEPIDOPTERA



BULK SAMPLE COLLECTION

NEARCTIC: USA: IL:
Swallow Cliff/Cherry Hill

NEARCTIC: USA: IL:
Swallow Cliff/Cherry Hill

(-CORINNIDAE)

8/14/2014

NEARCTIC: USA: IL:
Swallow Cliff/Cherry Hill

(-CORINNIDAE)

8/14/2014

NEARCTIC: USA: IL:
Swallow Cliff/Cherry Hill

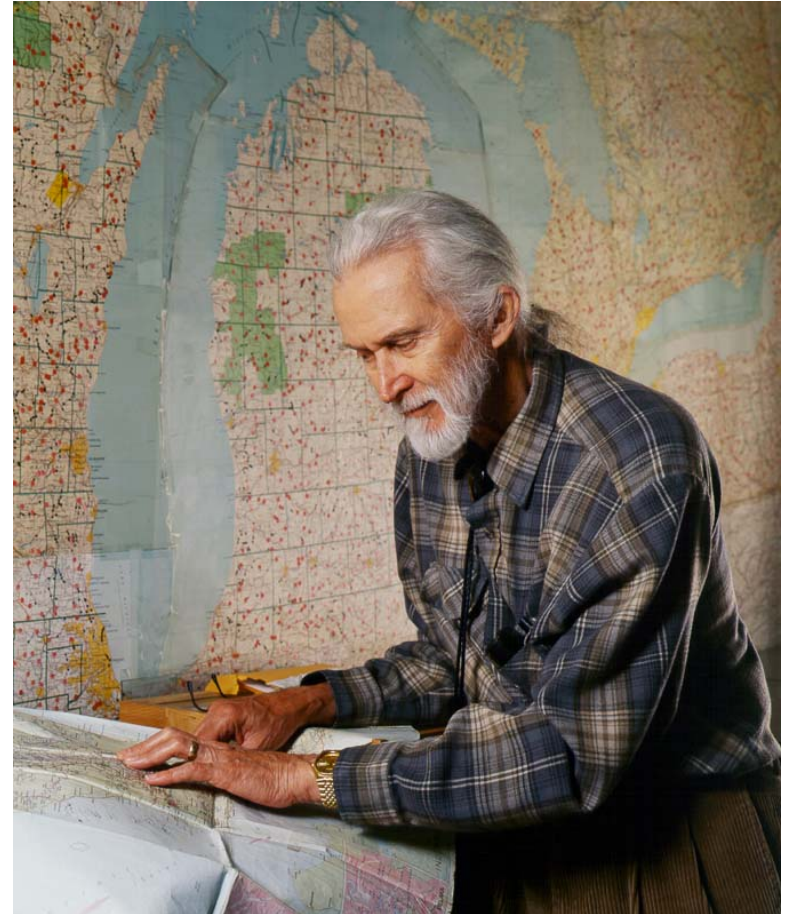


DRYOPOID WATER BEETLES?





HARRY G. NELSON CURATOR









ARLINGTON HEIGHTS

Winnetka
Kenilworth
Wilmette

EVANSTON

ELGIN

DES PLAINES

SKOKIE

SOUTH ELGIN

ST CHARLES
GENEVA

HEARTLAND
AURORA

AURORA

WHEATON

WHEATON

WHEATON

DU PAGE

BERWYN

CICERO

CHICAGO
1619

WHEATON

WHEATON

WHEATON

WHEATON

WHEATON

WHEATON

WHEATON

WHEATON

WHEATON

WHEATON

WHEATON

WHEATON

WHEATON

WHEATON

WHEATON

WHEATON

WHEATON

WHEATON

WHEATON

WHEATON

WHEATON

WHEATON

WHEATON

WHEATON

WHEATON

WHEATON

WHEATON

WHEATON

WHEATON

WHEATON

WHEATON

WHEATON

WHEATON

WHEATON

WHEATON

WHEATON

WHEATON

WHEATON

WHEATON

WHEATON

WHEATON

WHEATON

WHEATON

WHEATON

WHEATON

WHEATON

WHEATON

WHEATON

WHEATON

WHEATON

WHEATON

WHEATON

WHEATON

WHEATON

WHEATON

WHEATON

WHEATON

WHEATON

WHEATON

WHEATON

WHEATON

WHEATON

WHEATON

WHEATON

WHEATON

WHEATON

WHEATON

WHEATON

WHEATON

WHEATON

WHEATON

WHEATON

WHEATON

WHEATON

WHEATON

WHEATON

WHEATON

WHEATON

WHEATON

WHEATON

WHEATON

WHEATON

WHEATON

WHEATON

WHEATON

WHEATON

WHEATON

WHEATON

WHEATON

WHEATON

WHEATON

WHEATON

WHEATON

WHEATON

WHEATON

WHEATON

WHEATON

WHEATON

WHEATON

WHEATON

WHEATON

WHEATON

WHEATON

WHEATON

WHEATON

WHEATON

WHEATON

WHEATON

WHEATON

WHEATON

WHEATON

WHEATON

WHEATON

WHEATON

WHEATON

WHEATON

WHEATON

WHEATON

WHEATON

WHEATON

WHEATON

WHEATON

WHEATON

WHEATON

WHEATON

WHEATON

WHEATON

WHEATON

WHEATON

WHEATON

WHEATON

WHEATON

WHEATON

WHEATON

WHEATON

WHEATON

WHEATON

WHEATON

WHEATON

WHEATON

WHEATON

WHEATON

WHEATON

WHEATON

WHEATON

WHEATON

WHEATON

WHEATON

WHEATON

WHEATON

WHEATON

WHEATON

WHEATON

WHEATON

WHEATON

WHEATON

WHEATON

WHEATON

WHEATON

WHEATON

WHEATON

WHEATON

WHEATON

WHEATON

WHEATON

WHEATON

WHEATON

WHEATON

WHEATON

WHEATON

WHEATON

WHEATON

WHEATON

WHEATON

WHEATON

WHEATON

WHEATON

WHEATON

WHEATON

WHEATON

WHEATON

WHEATON

WHEATON

WHEATON

WHEATON

WHEATON

WHEATON

WHEATON

WHEATON

WHEATON

WHEATON

WHEATON

WHEATON

WHEATON

WHEATON

WHEATON

WHEATON

WHEATON

WHEATON

WHEATON

WHEATON

WHEATON

WHEATON

WHEATON

WHEATON

WHEATON

WHEATON

WHEATON

WHEATON

WHEATON

WHEATON

WHEATON

WHEATON

WHEATON

WHEATON

WHEATON

WHEATON

WHEATON

WHEATON

WHEATON

WHEATON

WHEATON

WHEATON

WHEATON

WHEATON

WHEATON

WHEATON

WHEATON

WHEATON

WHEATON

WHEATON

WHEATON

WHEATON

WHEATON

WHEATON

WHEATON

WHEATON

WHEATON

WHEATON

WHEATON

WHEATON

WHEATON

WHEATON

WHEATON

WHEATON

WHEATON

WHEATON

WHEATON

WHEATON

WHEATON

WHEATON

WHEATON

WHEATON

WHEATON

WHEATON

WHEATON

WHEATON

WHEATON

WHEATON

WHEATON

WHEATON

WHEATON

WHEATON

WHEATON

WHEATON

WHEATON

WHEATON

WHEATON

WHEATON

WHEATON

WHEATON

WHEATON

WHEATON

WHEATON

WHEATON

WHEATON

WHEATON

WHEATON

WHEATON

WHEATON

WHEATON

WHEATON

WHEATON

WHEATON

WHEATON

WHEATON

WHEATON

WHEATON

WHEATON

WHEATON

WHEATON

WHEATON

WHEATON

WHEATON

WHEATON

WHEATON

WHEATON

WHEATON

WHEATON

WHEATON

WHEATON

WHEATON

WHEATON

WHEATON

WHEATON

WHEATON

WHEATON

WHEATON

WHEATON

WHEATON

WHEATON

WHEATON

WHEATON

WHEATON

WHEATON

WHEATON

WHEATON

WHEATON

WHEATON

WHEATON

WHEATON

WHEATON

WHEATON

WHEATON

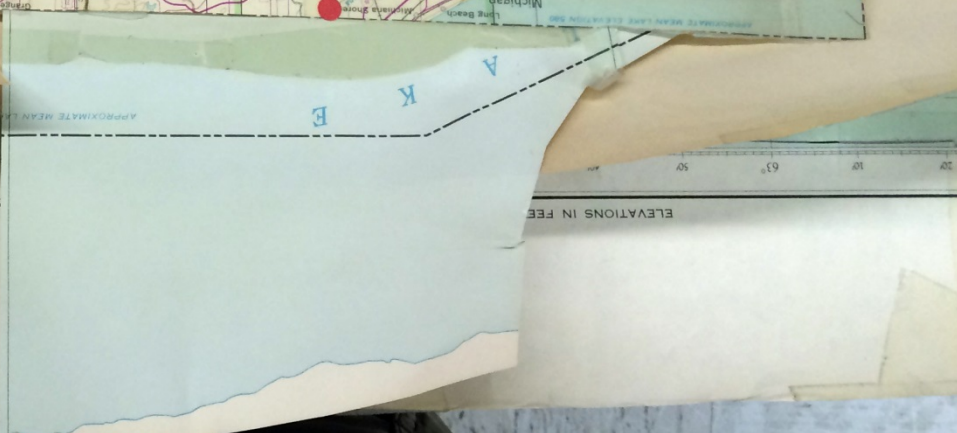
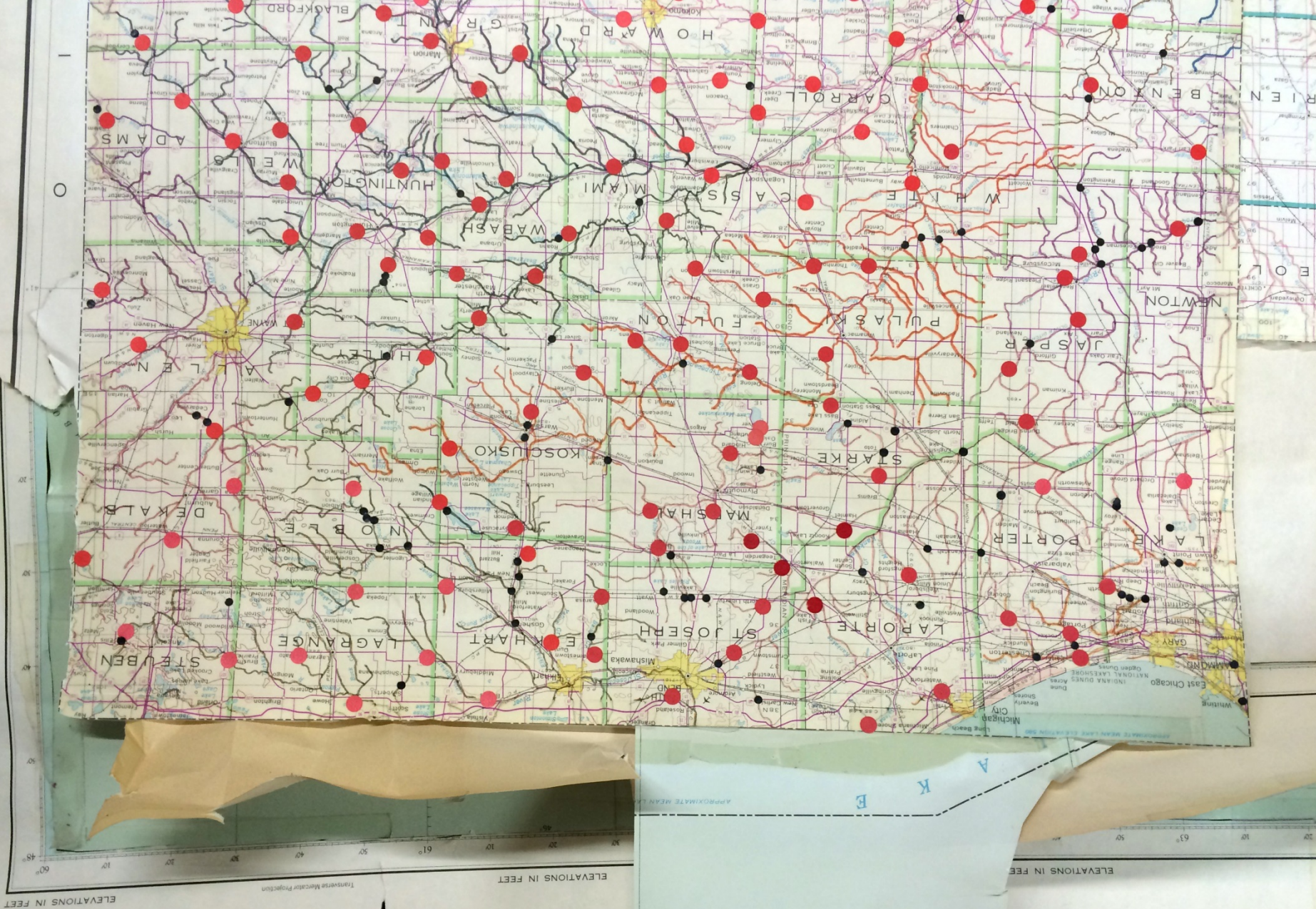
WHEATON

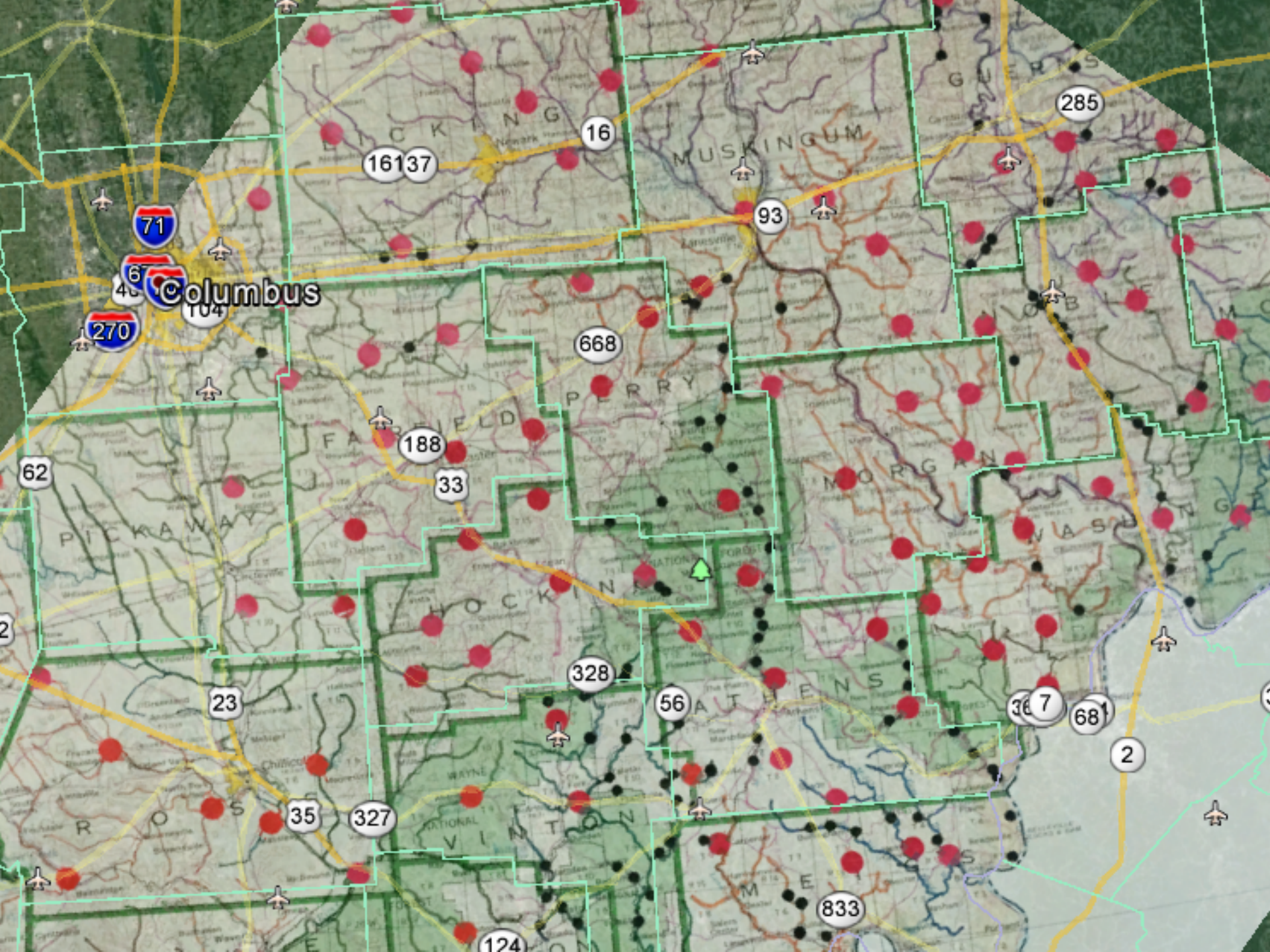
WHEATON

WHEATON

WHEATON

WHE





July 24, 1984, NY: Co. Oswego; small trib of Little Sandy Creek at rd #71, Fruit Valley.

AT = 22 1/4 / 0c at
WT = 23 9/30m ed +

7-1/2 m long, coarse sand
7-1/2 m long, coarse sand! MONO
lay down 1 mile above the lake. Is ponded down in a wash
3 mi SW of Oswego
good sandstone, but for hard rock, shaly

019.2
022.2

July 24, 1984, NY: Co. Oswego; Catfish Creek at rd #104B, 1 mi SW of Oswego
[= 1 mi SW of Oswego]

AT = 23 1/4 / 0c at
WT = 23 3/4 / 11.45 am ed +

Demister
Copper sandstone with, first of 199.
Bull Run / Wagon Road - about 1/2
+ coarse sand

848200

July 24, 1984, NY: Co. Oswego; Trib. (wash) of Catfish Creek, 1 mi NW of East Palerme.

Nabungetake

? heavy / mud
cultivated / natural (clean) swamp country

848200

July 1984, NY: Co. Oswego; Catfish Creek at N of Palerme

AT = 24 3/4 / 0c at
WT = 24 1/4 / 1:30 pm ed +

devel / coarse sand, small's, fony much wood debris

848200

NY: Co. Oswego; Groundstone Creek rd #41, and #28, 1/2 mile SW of Palerme

AT = 24 3/4 / 0c at
WT = 25 3/4 / 3:15 pm ed +

good stone / coarse sand

848200

Stop #204

TUES, July 24, 1984, NY: Co. Oswego, Little Sandy Creek
0.5 miles E of Sandy Creek (town)

AT = 24 1/4 / 0c at
WT = 24 1/2 / 4:30 pm ed +

Two vials
ENA-1984
#30
31
#30

at Academy St (street)
about 10 m apart
St. Paul's 13 NOV 07.
E (21) different colored, probably from same source
848204

530 6:15
AT 24 23 3/4
WT 28 3/4 27 3/4

Stop #205

TUES, July 24, 1984, NY: Co. Jefferson; Little Sandy Creek at rd #193, Ellisburg.

530 6:15
AT 24 23 3/4
WT 28 3/4 27 3/4

Two vials
ENA-1984
#32
33

Psalm 30 (non part)
l. out. 30
Palog
St. Paul's 125 (156)
bed rock / exposed 20 ft
848205

530 6:15
AT 24 23 3/4
WT 28 3/4 27 3/4

Stop #206

WED, July 25, 1984, NY: Co. Hamilton; Rock River
100 yds below outlet of Lake Ontario at rd #28 = 3 mi SE of Blue Mountain (town)

AT = 19 3/4 / 0c at 12:45 pm
WT = 22 7/8 / -d +

Two vials
ENA-1984
#34
35
36

good coarse sand & stone but cementation
Not easy to locate stone
washed
Hudson R (#37)
848206

AT = 19 3/4 / 0c at 12:45 pm
WT = 22 7/8 / -d +

Stop #207

WED, July 25, 1984, NY: Co. Hamilton; Hudson R (#37) outside mouth of (or Thickett's fork)

AT = 21 1/2 / 0c at
WT = 22 1/2 / 6:15 pm ed +

Two vials
ENA-1984
#37
38
44b

#37 (smaller than #37)
#37 - 10' higher + more
E (2)
848207 of OPTM
thickett's R. was table, low
I could only find 1/2 m of upper table / boulder
26.3, 3 1/2

AT = 21 1/2 / 0c at
WT = 22 1/2 / 6:15 pm ed +

Stop #208

WED, July 25, 1984, NY: S. A. Johnson; New Haven River rd #116, 1/2 mi NE of Middlebury, at River Rd.

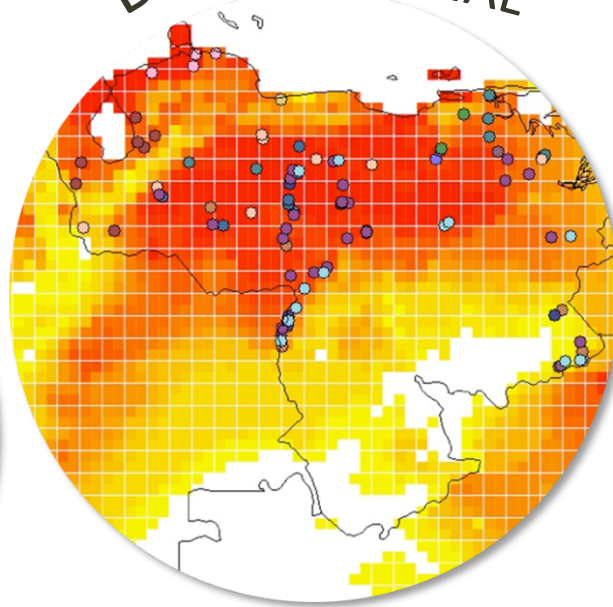
AT = 21 1/2 / 0c at
WT = 22 1/2 / 6:15 pm ed +

Two vials
ENA-1984
#39
40

most - 11
l. out. - 6
P. white - 1
" " - 1
St. Paul's 9 NOV 07
848208
all
Normal gravel bed co. continued but actually more fines / silt / clay, no stones in stream

AT = 21 1/2 / 0c at
WT = 22 1/2 / 6:15 pm ed +

DISTRIBUTIONAL



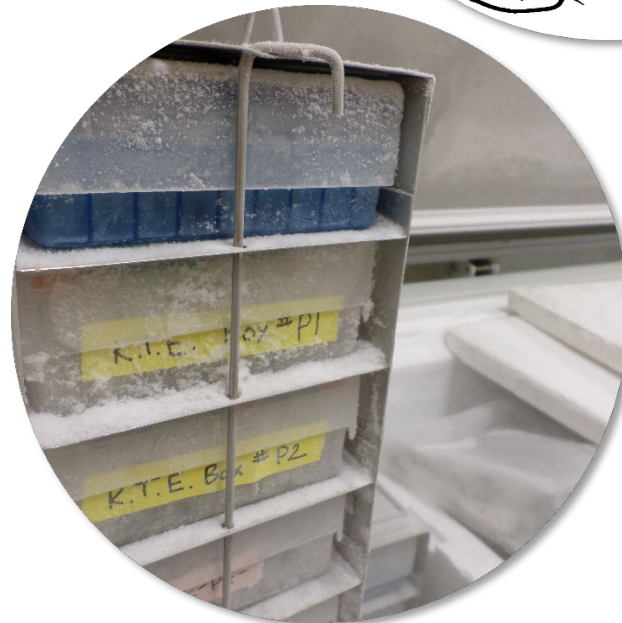
MORPHOLOGICAL



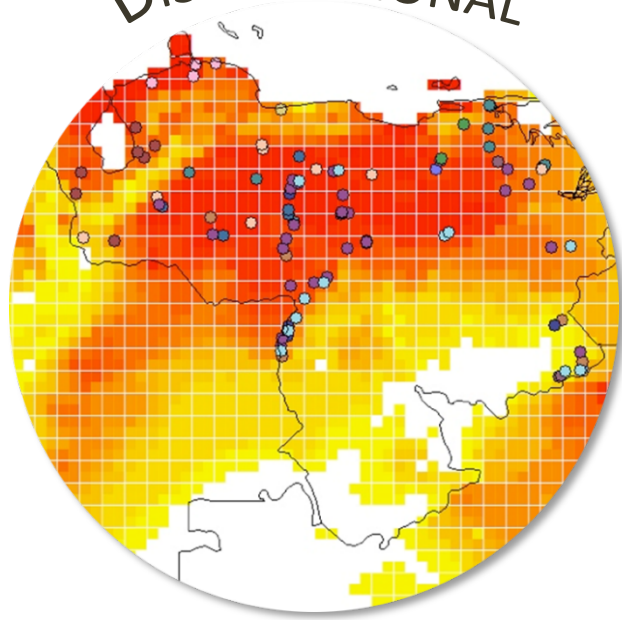
ECOLOGICAL



MOLECULAR



DISTRIBUTIONAL



ECOLOGICAL









DERMESTIDAE
5