

Paleontology Digitization Working Group

T.S. Karim¹, G. Nelson², R. Burkhater³, S. Butts⁴, U. Farrell⁵, A. Molineux⁶, C. Norris⁴, J. Utrup⁴

History:

- The Paleo Digitization Working Group was created after the Paleontology Digitization meeting held at Yale in September 2013.
- The primary aim of the group is to examine issues and create community-generated documentation related to the digitization of paleontology collections.
- In the first year, we hosted a very well-attended webinar series, covering topics from locality data redaction to the Specify data model.
- The webinar series has been rebooted for 2015-2016 (see schedule).
- We have held several workshops related to imaging and databasing.
- The Paleo Digitization Working Group has been very active at the Geological Society of America Annual meetings, hosting all day sessions in 2014 and 2015.

- The group wiki, hosted on the iDigBio website, continues to grow. Check it out for updates and new content!

https://www.idigbio.org/wiki/index.php/Paleo_Digitization_Working_Group

- Join the listserv: idiqbiopaldigi-L@lists.ufl.edu

Geological Society of America 2015

- GSA Annual Meeting-Baltimore, MD, Nov. 1-4, 2015
- Full day session (32 abstracts) and poster session (6 abstracts)
- Highlighting uses of digitized data in research



Geologic Context Data and Darwin Core

- A subgroup interested in Paleo Data-related issues has been discussing:

- Darwin Core Geology Extension
- Standardization of Lithostratigraphic terms
- How data models include Geologic Context information- discussions with the Specify software team and C4P group led to changes in the Specify data model for geologic context data

DROID 4 Working Group

- The DROID 4 working group is an offshoot of the DROID workshop held in Gainesville in 2012.
- Generalized workflows for digitization of fossil collections and ancillary data have been developed and are now available on the iDigBio wiki and GitHub (see DROID poster).
- A paper outlining the workflows is currently in review in Palaeontologica Electronica.



PaleoDigi Webinar Series 2015-2016

Dena Smith (CU Boulder & STEPPE)- An introduction to STEPPE (Sedimentary Geology, Time, Environment, Paleontology, Paleoclimatology, Energy) and what it can do for you- August 25th, 2015



Doug Boyer (Duke University)- MorphoSource- September 8th, 2015

Susan Butts & Christopher Norris (Yale Peabody Museum)- iDigPaleo Portal- September 22nd, 2015



Gil Nelson (iDigBio)- Navigating the iDigBio Portal- October 13th, 2015



Amanda Millhouse (Smithsonian)- Data standards & database fields- November 10th, 2015

Jessica Utrup (Yale Peabody Museum)- Georeferencing for Paleo Collections- December 8th, 2015

Kathy Hollis (Smithsonian)- Digitization Efforts at the NMNH- January 12th, 2016



Kathy Hollis (Smithsonian)- Federal Collections Digitization outside the NMNH- February 9th, 2016

Laura Vietti (University of Wyoming)- Digitizing Small Paleo Collections- March 23rd, 2016



Jocelyn Sessa (AMNH)- ePANDDA: Enhancing Paleontological and Neontological Data Discovery API- April 13th, 2016



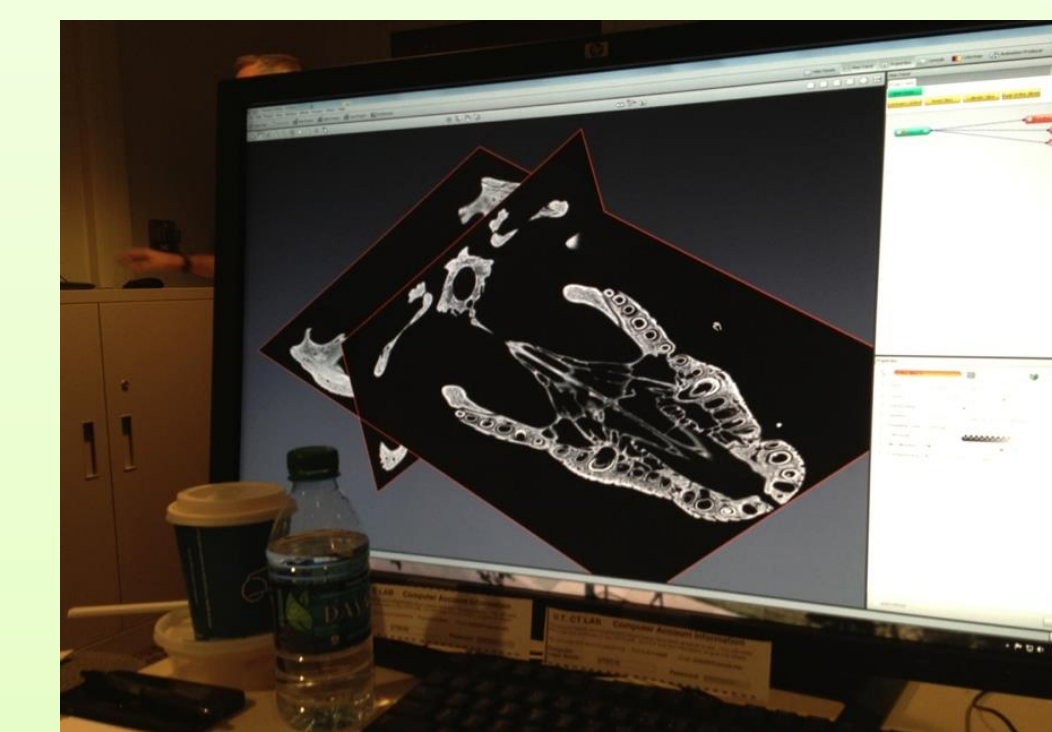
Previous webinar topics include:

- Standard views for imaging specimens
- Redacting sensitive data
- Stratigraphy Issues
- Linking ancillary data
- PBDB and C4P
- GeoLex-USGS
- Specify Schema discussion

Paleontology Related Workshops 2015

• CT Scanning Short Course:

- University of Texas, Spring 2015
- 3 day short course focusing on acquiring and working with CT data
- 10 attendees (9 graduate students & 1 early career professional)



• 3D Digitization of Fossils for Educators and Citizen Scientists:

- University of Florida, Summer 2015
- 2 day workshop focusing on 3D imaging techniques specifically for education and outreach use
- Over 50 attendees (mostly secondary science educators)



Rob Hoffman Photography

Paleontology Digitization Workshops 2013-2014

• Paleontology Digitization Workshop:

- Yale Peabody Museum- Fall 2013
- Over 60 attendees
- Two days of presentations and collections tours



• Specify for Paleontology Workshop:

- Lawrence, KS- Spring 2014
- Four day workshop led by Andy Bentley
- 17 onsite and 23 remote participants
- Conference call with EarthCube group meeting in D.C. to discuss how Specify handles Geologic Context data.
- Specify has now made changes to the data model based on our suggestions.



• Paleontology Imaging Workshop:

- Austin, TX- Spring 2014
- Over 50 attendees
- All paleontology disciplines represented
- Three day meeting: presentations, imaging demos, and a CT scanning workshop

