

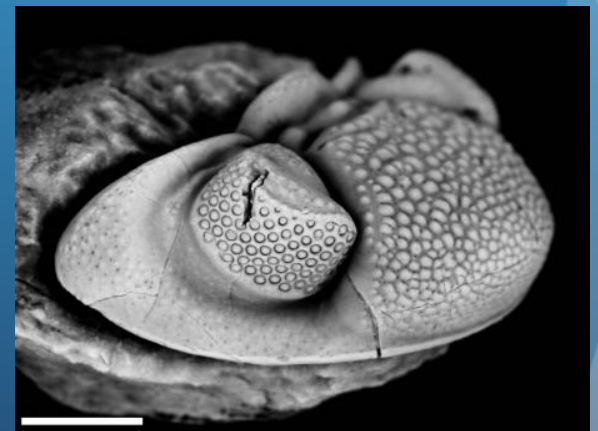
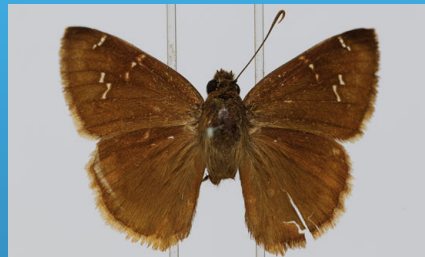
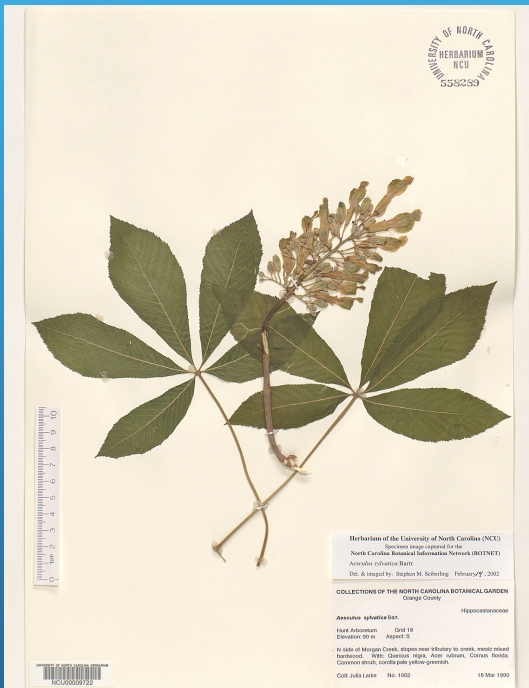


DROID

Una Farrell
Talia Karim

DROID?

- Developing Robust Object to Image to Data workflows



DROID Workshop 2012



DROID 4- Paleontology

- Pre-digitization curation and setup
- Ledgers, card catalogs, field notebooks
- Labels
- Object Imaging
 - 3D preserved specimens
 - Compression fossils

Example Workflow

Module 1C: Imaging Three Dimensionally Preserved Specimens



Task ID	Task Name	Explanations and Comments	Resources
T0	Set up camera/imaging station (may need to be set up each time and disassembled for security reasons etc.)	Attach appropriate lens. The imaging station can then be configured for whatever size/type of fossils you have chosen in T3, and whether you are utilizing stacking, in preparation for iterating through T4-T9.	See the following related to herbarium imaging for good information about selecting cameras and copy stands: https://www.idigbio.org/wiki/images/8/86/IDigBioImagingGeneralEquipmentRecommendations1_0.pdf
T1	Select and retrieve specimens/drawer of specimens from storage location.	Some institutions record images of labels and specimens simultaneously.	<ul style="list-style-type: none">• Institutional specimen imaging policy or project guidelines,• Technician.

Resources

- Do you have resources to contribute?
 - Equipment
 - Standard orientations - specific taxonomic group
 - Cleaning specimens
 - Software
 - Mounting materials

How To - what would you like?

- Whitening
- Blackening
- Stacking
- Standard orientations
- Software
- Image editing
- Archival data storage

Send us your documentation!

- talia.karim@colorado.edu
- gnelson@bio.fsu.edu