

CYWG (CyberInfrastructure Working Group) October 2014

iDigBio Data Ingestion

Dan Stoner

Advanced Computing and Information Systems Laboratory (ACIS)
University of Florida

 dstoner@acis.ufl.edu

 [@thatlinuxbox](https://twitter.com/thatlinuxbox)

Over 300 Data Providers...



Data Ingestion Progress

November 2013 -

4.2 million specimen records

0.9 million media records

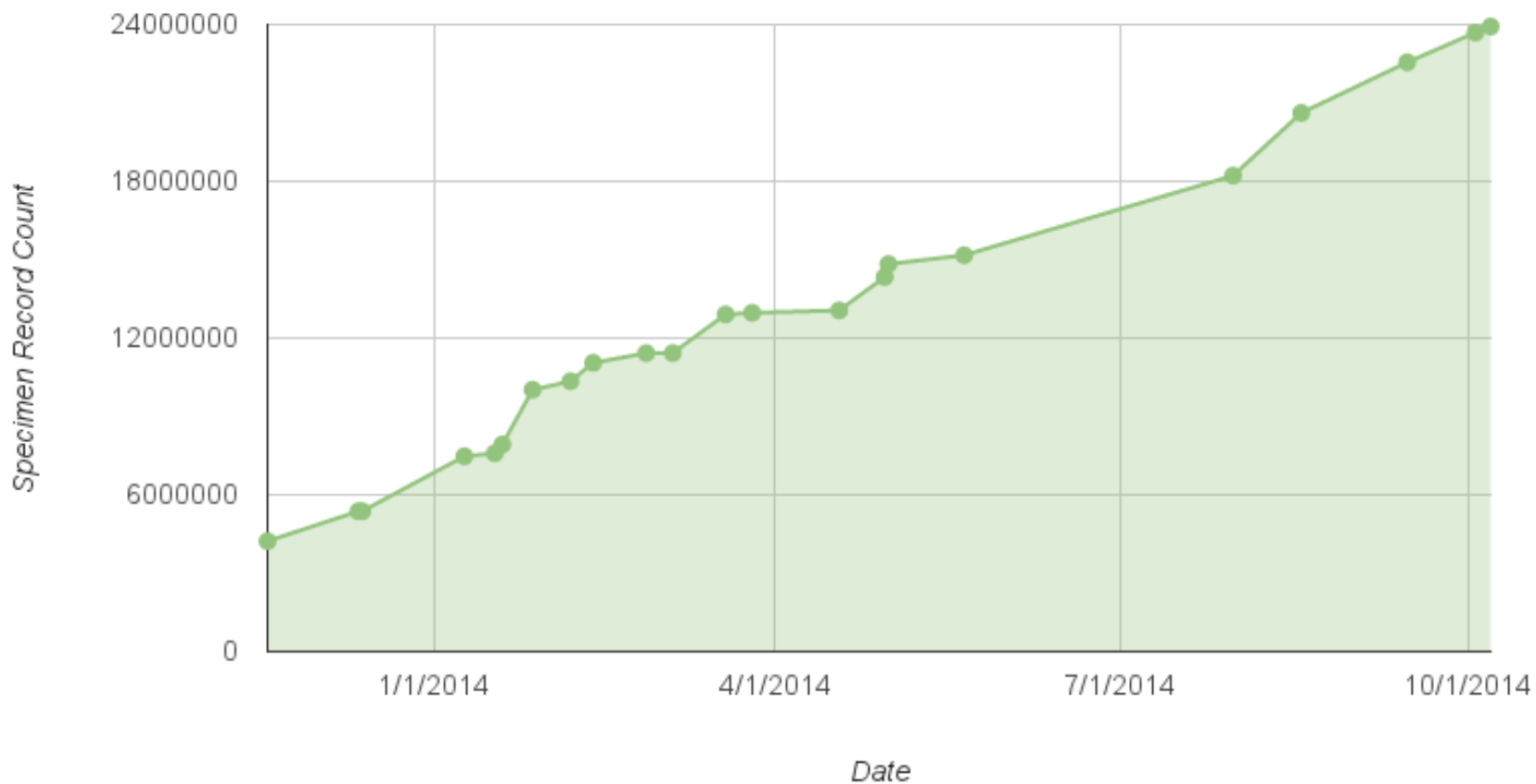


October 2014 -

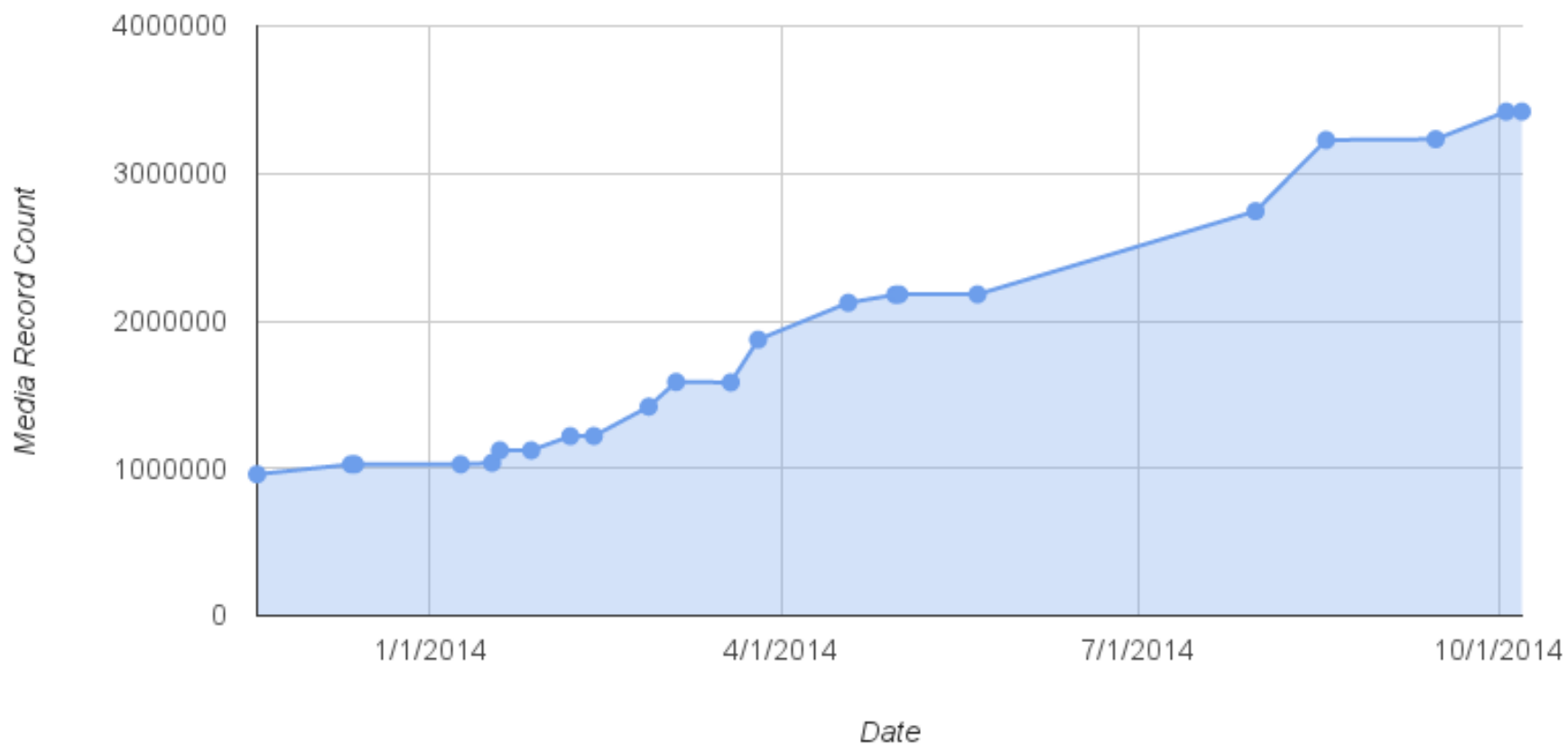
23.9 million specimen records

3.4 million media records

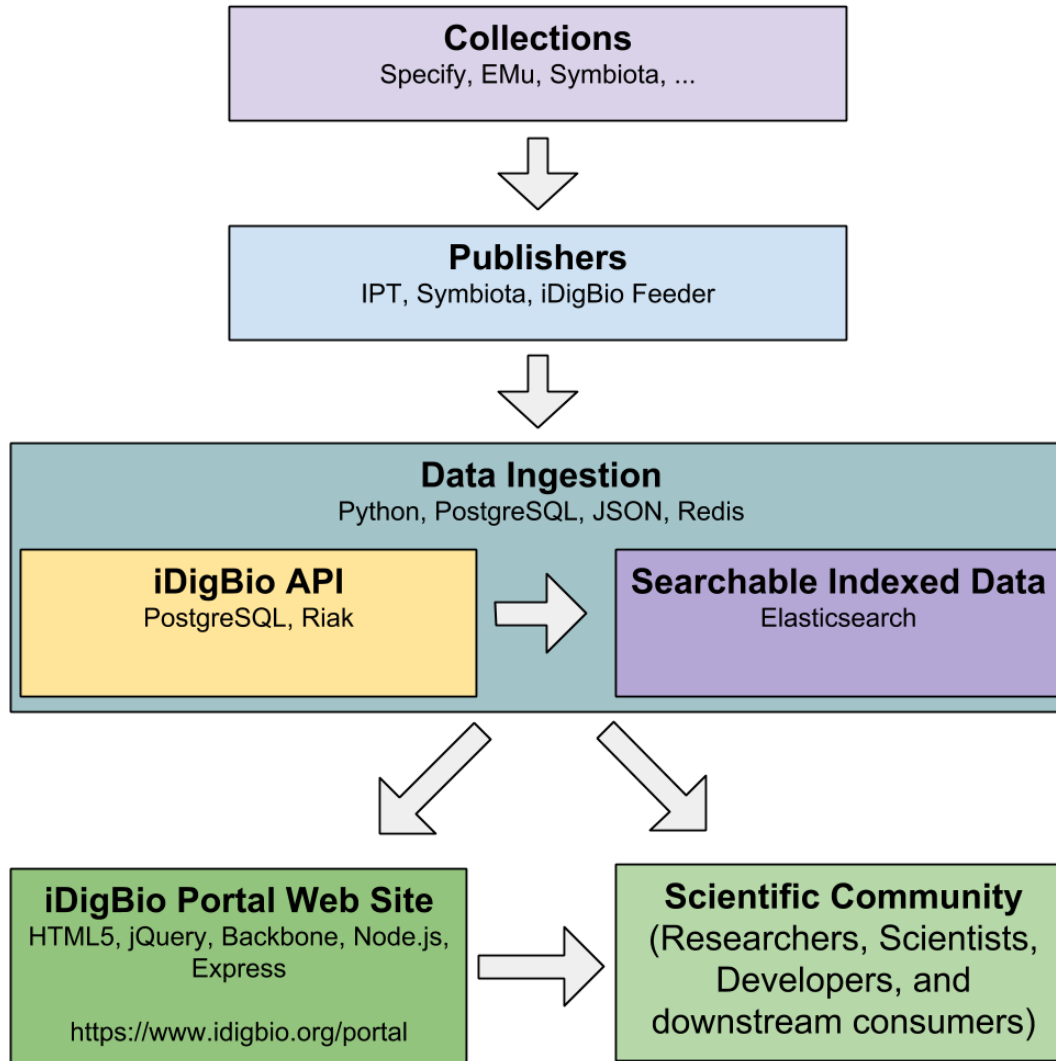
iDigBio Data Ingestion - Specimen Records



iDigBio Data Ingestion - Media Records



iDigBio Data Flow Diagram



Three types of data publishing technologies currently being consumed by iDigBio:

GBIF Integrated Publishing Toolkit (IPT) - a Java tool used to publish and share biodiversity datasets

<http://www.gbif.org/ipt/>

Symbiota – web-based collection management software

<http://symbiota.org/>

iDigBio RSS Feeder – data sharing service for providers who do not run infrastructure

Dataset Formats Consumable by iDigBio

- IPT – DwC-A
- Symbiota portals – DwC-A
- iDigBio Feeder – DwC-A, CSV, ...

If you can export specimen data from your system / database / spreadsheet into DwC-A (or even CSV), then you can share data with iDigBio.

iDigBio RSS Feeder facilitates the sharing of over 1.5 million specimen records and 200 thousand media records from providers who do not need to run “servers”.

Darwin Core Archive / DwC-A

<http://rs.tdwg.org/dwc/terms/guides/text/>

A Darwin Core Archive is a zip file that includes metadata about the dataset, the data itself, and any optional extension data.

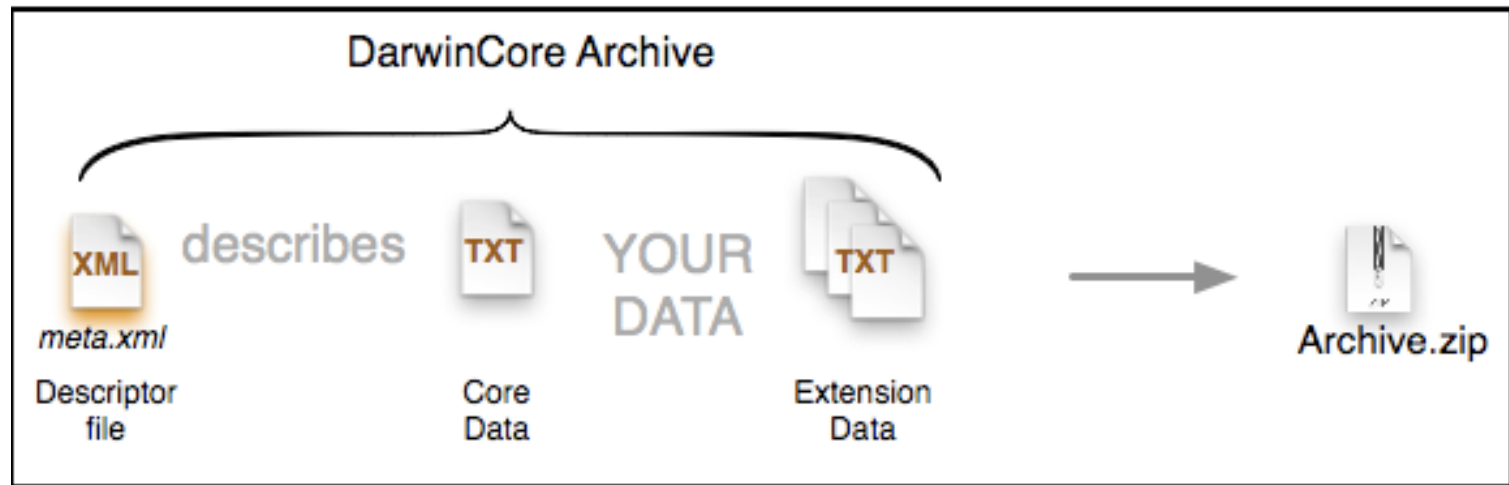


Image source: <http://tools.gbif.org/dwca-assistant/>

Specimen Data – Darwin Core Standard

<http://rs.tdwg.org/dwc/terms/>

Field	Records With This Field	(%) Percent Used
Institution Code (dwc:institutionCode)	41,262	100
Catalog Number (dwc:catalogNumber)	41,262	100
Collection Code (dwc:collectionCode)	41,262	100
Occurrence ID (dwc:occurrenceID)	41,262	100
Basis of Record (dwc:basisOfRecord)	41,262	100
Kingdom (dwc:kingdom)	41,261	99.998
Phylum (dwc:phylum)	41,261	99.998
Class (dwc:class)	41,261	99.998
Order (dwc:order)	41,261	99.998
Family (dwc:family)	41,261	99.998
Scientific Name (dwc:scientificName)	41,261	99.998
Locality (dwc:locality)	41,248	99.966
Specific Epithet (dwc:specificEpithet)	41,157	99.746
Genus (dwc:genus)	41,124	99.666
Continent (dwc:continent)	40,963	99.275

Recommended minimum Darwin Core fields for iDigBio Ingestion:

Record ID

Scientific Name

Occurrence ID

Event Date

Collector Name

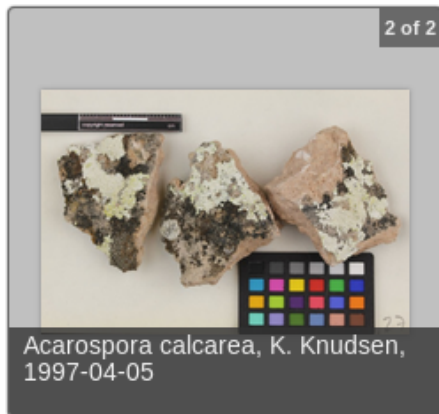
Locality Data

Barcode, catalog number, accession id or collection number

Paleo specimens should also include geological context

Media Data – Audubon Core / AC

http://terms.tdwg.org/wiki/Audubon_Core_Term_List



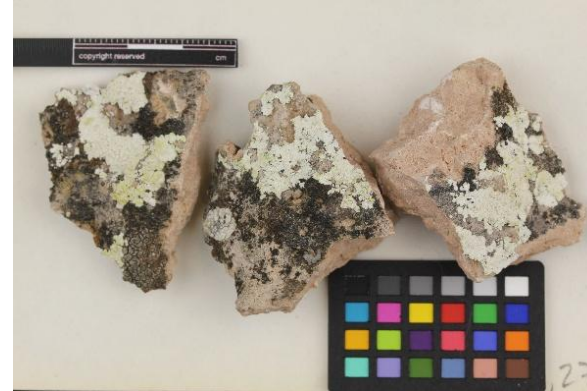
Images Source: Arizona State University Lichen Herbarium (Accessed through iDigBio Specimen Data Portal, <https://www.idigbio.org/portal>, 2014-09-18)

GBIF has a nice write-up on the benefits of AC over dwc:associatedMedia:

<http://gbif.blogspot.com/2014/05/multimedia-in-gbif.html>

Audubon Core vocabularies address such concerns as:

- the management of the media and collections
- descriptions of their content
- their taxonomic, geographic, and temporal coverage
- appropriate ways to retrieve, attribute and reproduce them



Media Metadata

Associated Specimen Reference	http://lichenportal.org/portal/collections/individual/index.php?occid=1374628
Type of Resource Subtype	StillImage Photograph
Metadata Date	2013-04-24 02:00:19
Provider-managed ID	urn:uuid:9a77ed32-7fa4-4831-938e-a499078058a8
Credit	Arizona State University Lichen Herbarium (ASU)
License Terms	CC BY-NC-SA (Attribution-NonCommercial-ShareAlike)
License URL	http://creativecommons.org/licenses/by-nc-sa/3.0/
Access URI	http://storage.idigbio.org/asu/lichens/ASU0068/ASU0068021a_lg.jpg
Format	image/jpeg

Audubon Core can support “new” media types

Specimen Data

dwc:catalogNumber: UF 105199

dwc:scientificName:

Carcharocles megalodon

dwc:stateProvince: Florida

dwc:county: Duval

dwc:latestPeriodOrHighestSystem:

Late Miocene

dwc:decimalLatitude: 30.39211

Media Data

dwc:scientificName:

Carcharocles megalodon

dc:type: image

ac:subtype: <http://www.fabbers.com/StL.asp>

ac:subtypeLiteral: 3dModel

ac:tag: tooth



Image source: Aaron Wood, Florida Museum of Natural History



Image source: http://commons.wikimedia.org/wiki/File:Carcharocles_megalodon_tooth.JPG

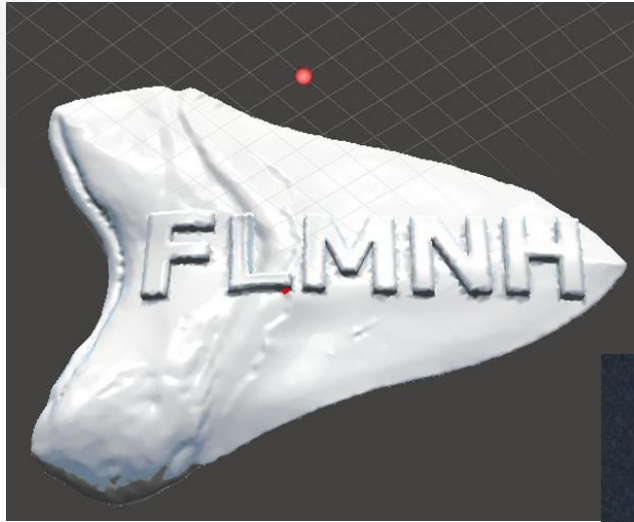


Image source: Aaron Wood



Image source: Aaron Wood
3D Model printing by Robert Burns

Recommended minimum Audubon Core fields for iDigBio Data Ingestion:

Access URI

Rights

Provider

Scientific name

Title

Description

Tags

Practical Details

Data Formats

- ISO 8601 Dates

- WGS84 Decimal Lat/Long

Controlled Vocabularies

- ISO Country Names and Codes

- State/Province names

- Identifier Formats (UUID, ARK, URN, DOI, URI, URL, LSID, ...)

- Copyright and Standard Licenses

- Apple Core guidelines for herbaria

 - <http://code.google.com/p/applecore/wiki/Introduction>

Ingestion Process Changes Over the Past Year

- New Staff (Dan Stoner... that's me!)
- Improved parallelization of ingestion tasks
- Incremental Indexing
- Database Tuning
- Ingestion Reporting

Ingestion Reporting

<https://www.idigbio.org/portal/publishers>

Publisher Summary

Publisher Name	Record Count			Media Record Count		
	Digest	API	Index	Digest	API	Index
Berkeley Natural History Museums IPT	1,860,584	1,859,985	1,859,985	0	0	0
Florida Museum of Natural History IPT Service	1,047,587	1,047,587	1,047,587	0	0	0
MyCoPortal Darwin Core Archive rss feed	1,679,459	1,679,458	1,679,458	371,346	371,346	371,346
Northern Great Plains Herbaria Darwin Core Archive rss feed	43,012	43,012	43,012	0	0	0
KU Biodiversity Institute IPT	2,010,071	2,011,170	2,011,170	0	0	0
The University of Connecticut Biological Collections	172,098	172,102	172,102	166,689	166,707	166,707
xBioD IPT in the Museum of Biological Diversity at the Ohio State University	521,710	521,782	521,782	2,593	2,593	2,593
CMC_specify	9,131	9,131	9,131	0	0	0
Consortium of North American Bryophyte Herbaria Darwin Core Archive rss feed	1,690,014	1,690,014	1,690,014	816,932	816,932	816,932
Museum of Comparative Zoology, Harvard University	1,736,357	1,736,471	1,736,471	0	0	0
CNALH Darwin Core Archive rss feed	1,232,891	1,232,891	1,232,891	649,241	649,241	649,241
SCAN Darwin Core Archive rss feed	873,024	873,160	873,160	68,696	68,718	68,718
iDigBio Feeder RSS Feed	1,316,574	1,316,574	1,316,574	19,024	19,024	19,024
Consortium of Intermountain Herbaria Darwin Core Archive rss feed	204,129	204,131	204,131	74,014	74,015	74,015
CAS-IPT	1,875,928	1,875,979	1,875,979	0	0	0
Macroalgal Herbarium Portal Darwin Core Archive rss feed	2,145	2,145	2,145	1,937	1,937	1,937
CNH portal Darwin Core Archive rss feed	89,199	89,199	89,199	56,557	56,557	56,557
IPT - Hosted by VertNet	5,070,222	5,070,222	5,070,222	479,440	479,440	479,440
North American Network of Small Herbaria Darwin Core Archive rss feed	4,162	4,162	4,162	4,273	4,273	4,273
Harvard University Herbaria IPT installation	412,331	412,331	412,331	295,055	295,055	295,055
SNOMNH IPT	310,328	310,328	310,328	0	0	0
Morphbank IPT Feed	48,567	97,127	97,127	0	65,167	65,167
SEINet Darwin Core Archive rss feed	347,210	347,216	347,216	161,533	161,627	161,627

Planned Future Changes

- Parallelize more parts of Ingestion process (such as media processing)
- Support for additional publisher types (beyond IPT, Symbiota, iDigBio RSS Feeder)
- Improved Ingestion logging and error detection
- Support for additional media types (audio, 3D scans, ...)
- Data Quality

Thank You!



www.idigbio.org



facebook.com/iDigBio



twitter.com/iDigBio



vimeo.com/idigbio



idigbio.org/rss-feed.xml



webcal://www.idigbio.org/events-calendar/export.ics

End.