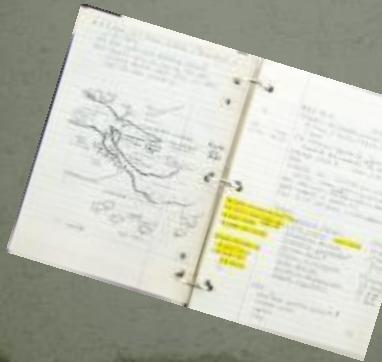
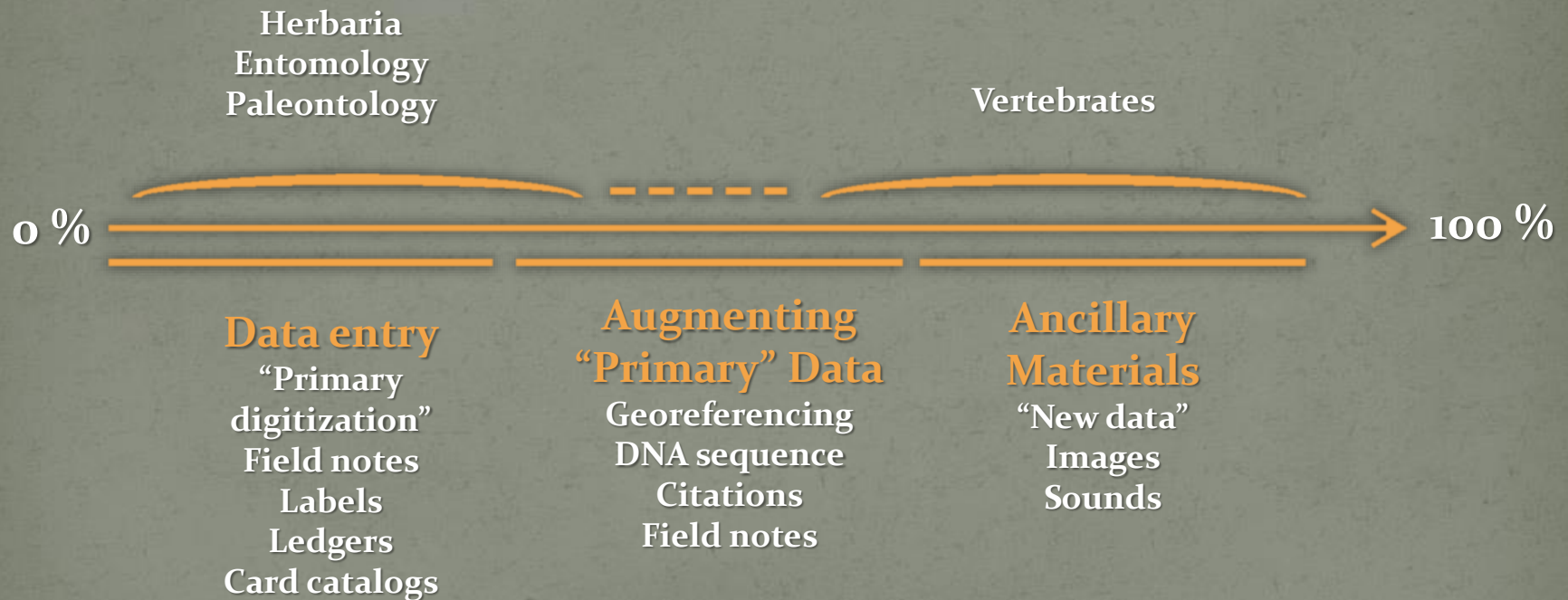


Digitization of Source Materials in Vertebrate Collections

Andy Bentley
KU Biodiversity Institute
Lawrence, KS



Digitization continuum



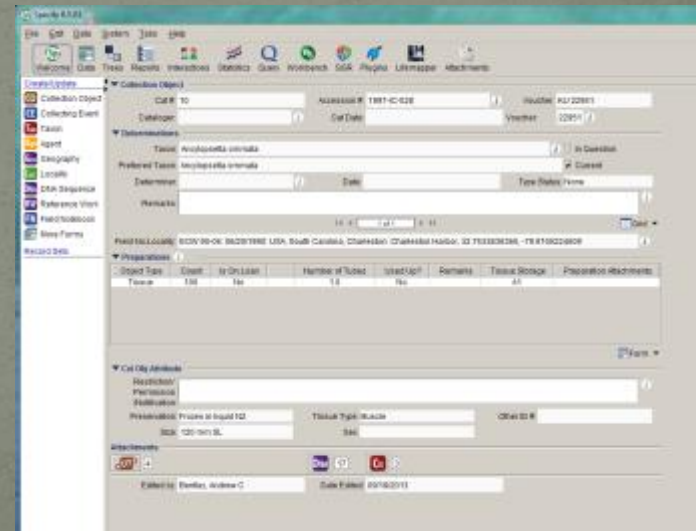
Reasons for digitization

- Besides overarching reason of providing richer, better quality data there are 3 main reasons for digitizing ancillary materials:

- Digitization for new data entry
- Augmentation of existing data
- Checking of data integrity
- Enable other uses/collaboration

- ## Content

- Primary data
- Secondary data
 - associated fauna, environmental data



Types of ancillary materials

- Specimen labels
- Field notes
- Ledgers
- Card catalogs – specimen and locality
- Maps
- Images – 35mm slide and digital
- *** sound & video files, accession/loan paperwork, publications etc.

0-4-78

13 Oct. 1978

Kan., Douglas Co., Clinton Reservoir, south shore
near Clinton marina site.
seines. KU Fisheries class (F.B. Cross).

Dorosoma cepedianum lengths 51, 57, 77, 91,
100, 58, + 223 mm.

Notemigonus crysoleucas

Phenacobius mirabilis

Cyprinus carpio

Notropis lutrensis

Pimephales notatus

Ictalurus punctatus

" *melas*

Morone chrysops 122 mm. 19.5 gr.

Micropterus dolomieu 118 mm. 18.5 g.

" *salmoides* 2, ~ 9 1/2 inches TL.

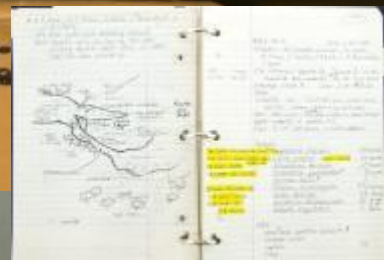
Lepomis cyanellus

" *macrochirus*

" *humilis*

Pomoxis annularis

Percina caprodes



011901	1 <i>Ancyliposella quadracellata</i>	Blount Co. Blount Co. Blount Co. Blount Co. Blount Co.	21 July 1971	—	—	No. 509
011902	1 <i>Aspilota latrocyta</i>	" " " " " "	"	"	"	"
011903	1 <i>Symphysa plagiata</i>	" " " " " "	30 July 1971	"	"	"
011904	1 <i>Elops saevus</i>	" " " " " " 02. 2. 41 S. Blount	27 July 1971	"	"	"
011905	1 <i>Symantecus cyrenarogaster</i>	" " " " " "	16 August 1971	"	"	"
011906	1 <i>Phylactylus scitaceus</i>	" " " " " "	29 July 1971	F. Slammer	"	"
011907	1 <i>Ectonus nauticus</i>	" " " " " "	August 1971	—	"	"
011908	1 <i>Periclytus torti</i>	" " " " " "	21 July 1971	"	"	"
011909	1 <i>Stenobius capinus</i>	" " " " " "	19 August 1971	F. Slammer	"	"
011910	1 <i>Chasmodon labor</i>	" " " " " "	20 July 1971	—	"	"
011911	1 <i>Periclytus tribulus</i>	" " " " " "	5 August 1971	F. Slammer	"	"
011912	1 <i>Periclytus apertus</i>	" " " " " "	1 August 1971	—	"	"
011913	1 <i>Leptoclytus laevigatus</i>	" " " " " "	9 August 1971	"	"	"
011914	1 <i>Troctes maculatus</i>	" " " " " "	21 July 1971	"	"	"
011915	1 <i>Opioclytus vesicularis</i>	" " " " " "	—	"	"	"
011916	1 <i>Doryctes</i>	" " " " " " S. Blount	11 August 1971	"	"	"
011917	1 <i>Alia abnormis</i> <i>Dacnusa patens</i>	" " " " " "	7 August 1971	"	"	"
011918	1 <i>Opioclytus griseus</i>	" " " " " "	27 July 1971	"	"	"
011919	2 <i>Lophoclytus</i>	" " " " " "	18 August 1971	"	"	"
011920	1 <i>Cucernia chrysis</i>	" " " " " "	9 August 1971	"	"	"
011921	1 "	" " " " " "	21 July 1971	"	"	"
011922	1 <i>Pezomachus alepoides</i>	" " " " " "	12 August 1971	"	"	"
011923	1 <i>Techinus lepturus</i>	" " " " " "	30 July 1971	"	"	"
011924	1 <i>Blatticlytus</i>	" " " " " "	21 July 1971	"	"	"
011925	1 <i>Stellifer linculatus</i>	" " " " " "	21 July 1971	"	"	"

KU Cat. No. 21742 *Pimephales vigilax*
Species
 Locality Kansas: Douglas Co: Wakarusa River, outflow channel below Clinton Lake dam
 Date 4 June 1987
 Habitat
 Temp.
 Collector E. B. Cross, T. Schmidt, J. Whipple Field No. FBC-1-87 Method of capture
 No. specimens 1 Stand. lengths Orig. No.
 Identified by Catalogued by Collins
 Published record
 Remarks

DIVISION OF FISHES
 UNIVERSITY OF KANSAS MUSEUM OF NATURAL HISTORY

• Used for cataloging at

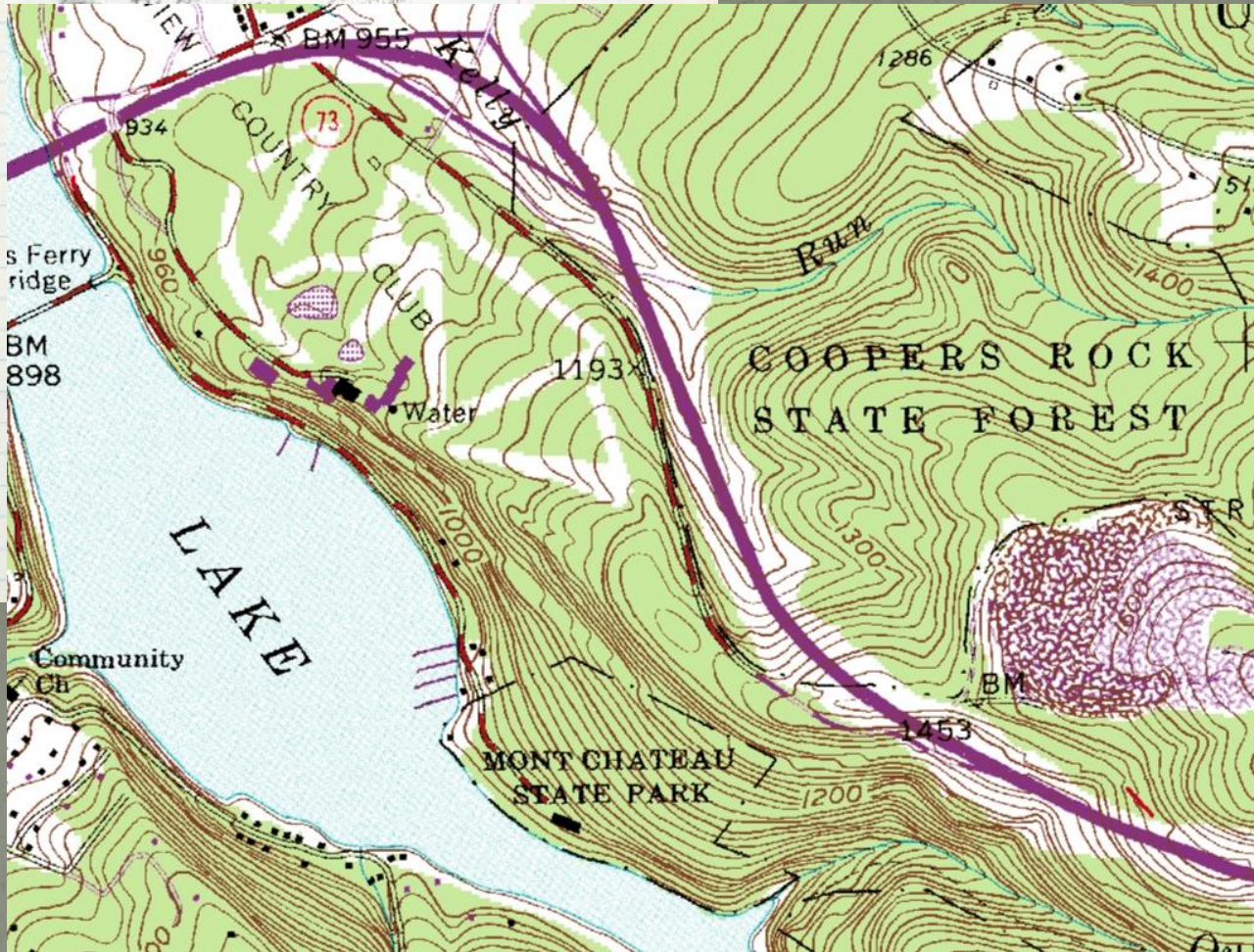
Semotilus a. atromaculatus 1313
Group Species Cat. No.
 Locality Kansas, Douglas Co., Washington Creek at bridge, 2 3/4 mi. W, 2 mi. S
 Lawrence Date 26 Oct. 1946
 Habitat
 Temp.
 Collector A. B. Leonard, W. R. Taylor Field No. RT23 Method of capture
 No. specimens 4 Stand. lengths Orig. No.
 Identified by Catalogued by
 Published record
 Remarks Acc 259

UNIVERSITY OF KANSAS MUSEUM OF NATURAL HISTORY
 24-1056-4 9-51-8300

d quality

M

- E
- F
- U



urity





al
characteristics either in the
ens. Also localities
rations

- Primary secondary con
- Variable quality (field in
- Very limited uses for dat
- Used for augmenting ex
checking of data in

