

Efficient workflow from collection to cataloging for marine invertebrates

François Michonneau
iDigBio / Division of Invertebrate Zoology
Florida Museum of Natural History



What do we do?

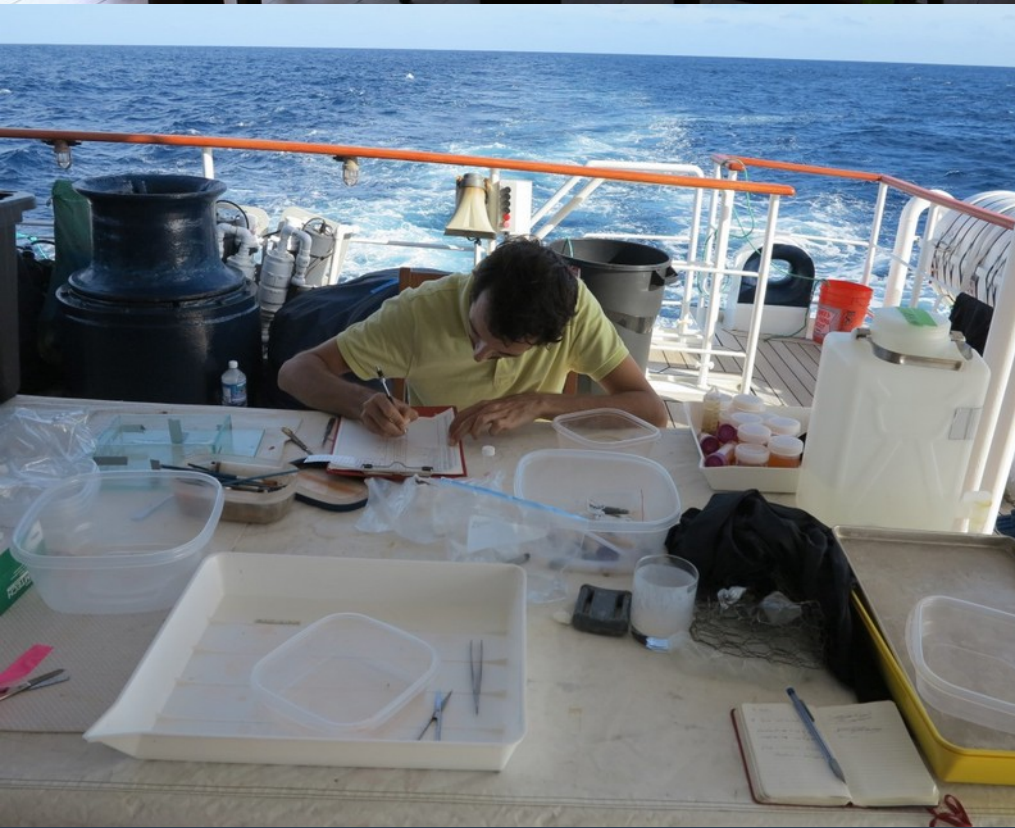
- All taxa inventories
- Capture as much diversity as possible



Where do we do it?







Challenges

- **Time**
 - Underwater
 - Samples get anoxic quickly
 - Lots of specimens
 - Rarity of interesting species
 - Taxonomic resolution



- **Collecting**
- **Station number attribution**
- **Sorting**
- **Specimen number attribution**
- **Photographing**
- **Subsampling**
- **Relaxing**
- **Fixating**
- **Cataloging**







- **Collecting**
- Station number attribution
- Sorting
- Specimen number attribution
- Photographing
- Subsampling
- Relaxing
- Fixating
- Cataloging



- Collecting
- **Station number attribution**
- Sorting
- Specimen number attribution
- Photographing
- Subsampling
- Relaxing
- Fixating
- Cataloging

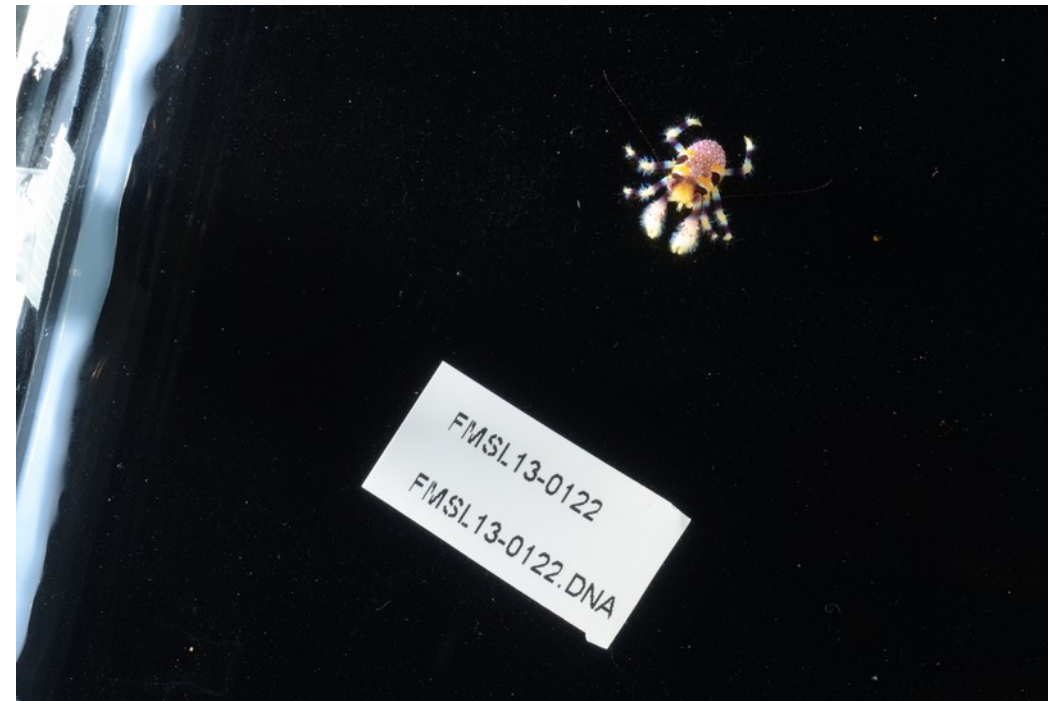


- Collecting
- Station number attribution
- **Sorting**
- Specimen number attribution
- Photographing
- Subsampling
- Relaxing
- Fixating
- Cataloging

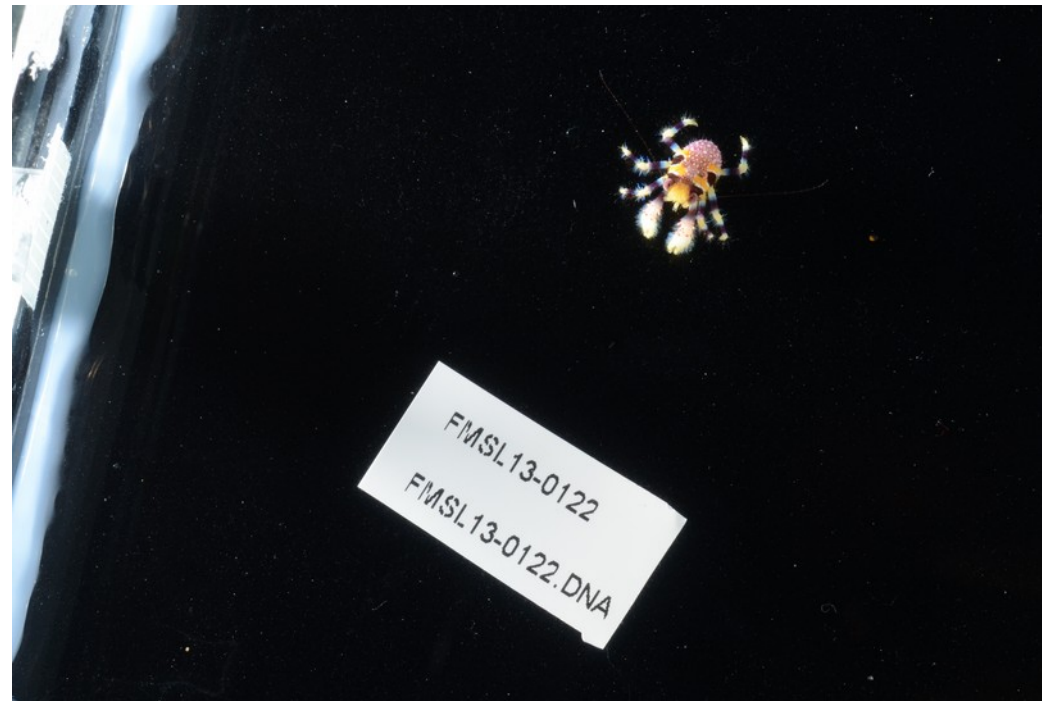


- Collecting
- Station number attribution
- Sorting
- Specimen number attribution
- Photographing
- Subsampling
- Relaxing
- Fixating
- Cataloging

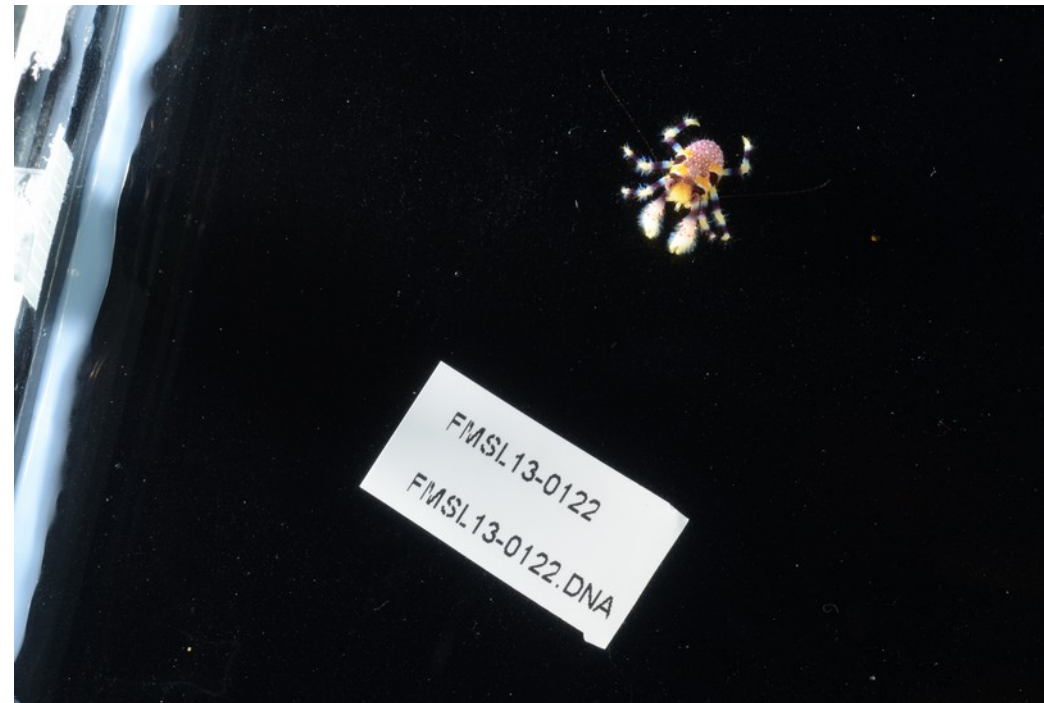
Date: 10-10-18		Project: Lites		Entered by:		
Field #	Station #	Morphospecies (lowest taxon level)	Photo ✓/N	Tissue ✓/N	Voucher ✓/N	Notes (count, microhab, assoc, fix)
FMSL13						
1	1	decapoda	✓	N	✓	
2	1	Austalium	N	N	✓	
3	1	Albicornia	N	N	✓	
4	1	Uca multifem	✓	N	✓	
5	3	Galatheidae	X	X	✓	
6	3	Saron	X	X	✓	
7	3	Alpheidae	X	X	✓	
8	3	Galatheidae	X	X	✓	
9	3	Petrolisthes	X	X	✓	
10	3	Pilumnidae	X	X	✓	
11	3	Saron	X	X	✓	
12	3	Petrolisthes	X	X	✓	
13	3	Trachina	X	X	✓	
14	3	Metathoa	X	X	✓	
15	3	small shrimp	X	X	✓	
16	3	Petrolisthes	X	X	✓	
17	4	Paguridea	X	X	✓	
18	1	Platysidea	✓	X	✓	
19	1	Petrolisthes	✓	X	✓	
20	1	Nudibranch	✓	X	✓	
21	1	Shrimp	✓	X	✓	



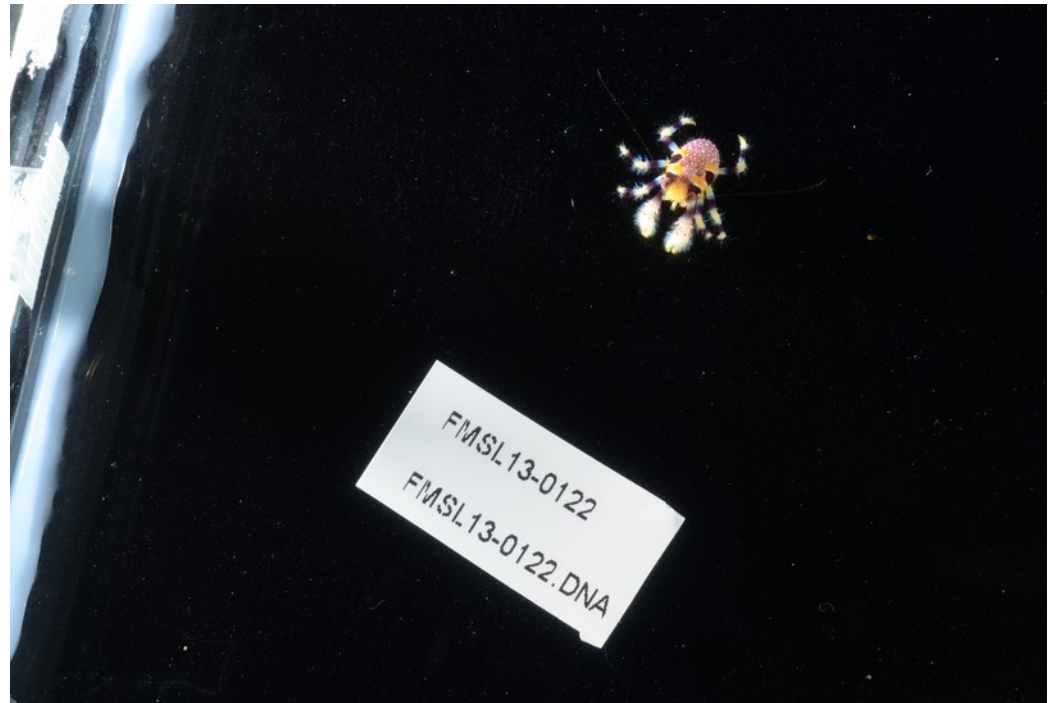
- Collecting
- Station number attribution
- Sorting
- Specimen number attribution
- **Photographing**
- Subsampling
- Relaxing
- Fixating
- Cataloging



- Collecting
- Station number attribution
- Sorting
- Specimen number attribution
- Photographing
- **Subsampling**
- Relaxing
- Fixating
- Cataloging



- Collecting
- Station number attribution
- Sorting
- Specimen number attribution
- Photographing
- Subsampling
- **Relaxing**
- Fixating
- Cataloging



- Collecting
- Station number attribution
- Sorting
- Specimen number attribution
- Photographing
- Subsampling
- Relaxing
- **Fixating**
- Cataloging



	A	B	D	E	F	G	H	I	J	K	L	M	N	O	P
	Co	Field_#	Taxon	UF_#	Phylum	Current ID	id_confid	counts	mo	id_cd	morphosp_matc	on loan	ID	station_num	P
29	2278	FMSL13-2270	Galathea tongi	41357	Arthropoda	Galathea tongi							G Pau	SLI13_ST106	
30	2279	FMSL13-2271	Galathea pilosa complex	40755	Arthropoda	Galathea pilosa	complex						G Pau	SLI13_ST143	
31	2280	FMSL13-2272	Galathea tongi	41358	Arthropoda	Galathea tongi							G Pau	SLI13_ST22	
32	2281	FMSL13-2273	Galathea	40765	Arthropoda	Galathea							G Pau	SLI13_ST43	
33	2282	FMSL13-2274	Thalamita cooperi	41969	Arthropoda	Thalamita cooperi							G Pau	SLI13_ST86	
34	2283	FMSL13-2275	Sadayoshia edwardsii	41359	Arthropoda	Sadayoshia edwardsii							G Pau	SLI13_ST43	
35	2284	FMSL13-2276	Galathea tongi	41360	Arthropoda	Galathea tongi							G Pau	SLI13_ST43	
36	2285	FMSL13-2277	Lybia	40710	Arthropoda	Lybia							G Pau	SLI13_ST13	
37	2286	FMSL13-2278	Saron	41361	Arthropoda	Saron							G Pau	SLI13_ST86	
38	2287	FMSL13-2279	Periclimenes s.l.	40905	Arthropoda	Periclimenes	sensu lato						G Pau	SLI13_ST86	
39	2288	FMSL13-2280	Amphipoda		Arthropoda	Amphipoda							G Pau	SLI13_ST86	
40	2289	FMSL13-2281	Tweedeia odhneri	41362	Arthropoda	Tweedeia odhneri							G Pau	SLI13_ST86	
41	2290	FMSL13-2282	Galathea tongi	41363	Arthropoda	Galathea tongi							G Pau	SLI13_ST86	
42	2291	FMSL13-2283	Galathea pilosa complex	40733	Arthropoda	Galathea pilosa	complex						G Pau	SLI13_ST86	
43	2292	FMSL13-2284	Petrolisthes nashensis?	41970	Arthropoda	Petrolisthes nashensis?	?						G Pau	SLI13_ST13	

- Photographing
- Subsampling
- Relaxing
- Fixating
- Cataloging

- Send images to experts for identification
- Always use same spreadsheet template
- and more...





