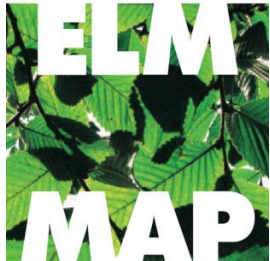


Citizen science: The role of crowdsourcing in digitising museum collections

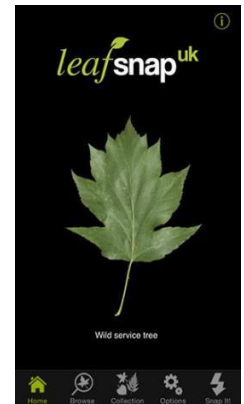
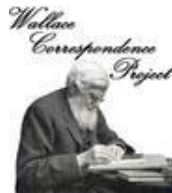
Lucy Robinson

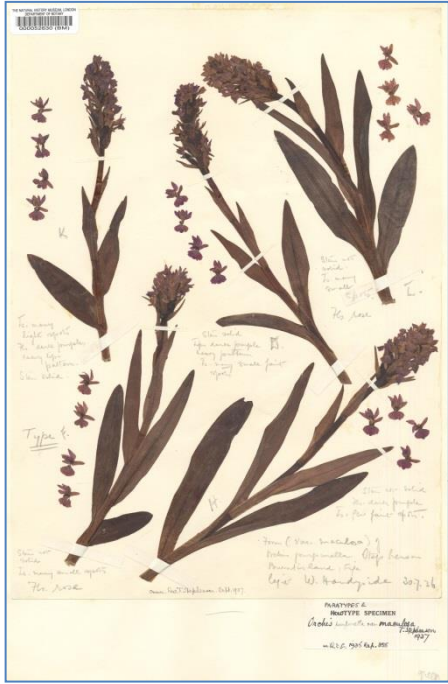
*Citizen Science Programme Manager,
Natural History Museum London*

NHM's citizen science projects



Walkers and naturalists collaborating to map Britain's surviving elm trees





| No. | Locality | Date |
|-----|------------------------------|--------------|
| 2-1 | 573 Santa Cecilia, al. Basen | 1942. 07. 10 |
| 4 | al. Sanjo | 1942. 07. 10 |
| 5 | al. - | 1942. 07. 10 |
| 6 | al. Karpur | 1942. 07. 10 |
| 7 | al. - | 1942. 07. 10 |
| 8 | al. - | 1942. 07. 10 |
| 9 | al. - | 1942. 07. 10 |
| 584 | al. - | 1942. 07. 10 |
| 1 | al. - | 1942. 07. 10 |
| 2 | al. Beni | 1942. 07. 10 |
| 3 | al. - | 1942. 07. 10 |
| 4 | al. Simbalpur | 1942. 07. 10 |
| 5 | al. Madras | 1942. 07. 10 |
| 6 | al. - | 1942. 07. 10 |



MUSEUM DU CONGO
Madagascar
Montagne d'Ambré
Coll. Schouteden

HOLOTYPE
雲南大勐龍 700 米
1957.IV.11
蕭富基等

Юльлян, Дамондуун,
700 м. 11. IV. 1957.
Пу Фу-ди и др.

HOLOTYPE
Homocidus (A.) impictus sp. nov.

IOZ(E) 222017

Pezak
Coll. Brailovsky

ст. Хибинь,
Кольск. п-ов
928

RIO
V. Olfers
Nr. 1166

HOLOTIPO
ARGENTINA:
TUCUMAN
SIAMBOA
I-45

Brailovsky A. det.
AVMASTUS
ER BRAILOVSKY

HEMI-COR-0001

SYN-TYPE
Mexico
Coll. Signoret.

perfidus
det. Stal

Holotype
madura
perfidus ♀
det. by Stal
T.R. Yonke, 1985

Syntype
Madura
perfidus Stål

Type Specimen Photographed
CSF_NHMM_041
<http://coreidea.speciesfile.org>

Coll. R. J. Sc. N. B.
Pérou :
ex Coll. Schouteden

Syntype ♂

Specimen Photographed
<http://coreidea.speciesfile.org>

Scott, Elliot
1600 ft.
95-41.

Acanthosoma
lucisignis sp. nov.

Type ♂
Holo-type ♂

BMNH(E)
Imaged for
<http://coreidea.speciesfile.org>

HOLOTIPO
NEW GUINEA: SE
Northern District
Cape Killerton
2-12.V.1965

W.A. Steffan
& Y.M. Huang
Collectors
BISHOP

H. Brailovsky A. det.
CNEIUS
Killerionensis Brailovsky

Mydas lateralis
Syn. it. *Teranini*
Duf. Burm.
Lupitan of Dahmet

avigralla gibbosa Spinola
Dupont
Bombay.

Fot. VIDANO-IV-1973
per DOLLING (G.B.)

Coll. Spinola box 28
Heteroptera

LECTO-TYPE ♀

Specimen Photographed
<http://coreidea.speciesfile.org>

Borneo
Xántus

Borys Malkin
Collector

H. Brailovsky A. det.
ANASA
MICANS
Brailovsky

CSF_HNHM 096
Photographed for:
<http://coreidea.speciesfile.org>

Mitapo PI
June-July
E.A. Mearns

Type No.
20147
U.S.N.M.

Typhlocolpura
vulcanalis
Bergr.-Type

Holo-type

HOLOTYPE
Grallidava
det. solitaria
W.R. Dolling 1973

ZMUC 00 102

Amer. merid.
Schmidt
Miss. Ford Lued
Lygais
bilineatus
F. & Fabr.

Dicror bilineatus
(Fob.)
det. E. Osuna
8-VII-1970

Type specimen imaged for:
<http://coreidea.speciesfile.org/>

California Academy
of Sciences

Type No. 994

ZOONIVERSE

- Atlas of Living Australia DigiVol
- iDigBio
- Les Herbonautes
- Herbaria@Home
- Smithsonian Transcription Center
- etc

ORCHID OBSERVERS

- Exploring the impacts of climate change on the UK's flora, using orchids as a model group
- Outdoor photography and online crowdsourcing
- 1,900 participants
- 55,000 online classifications
- 1,800 new field observations from 90/112 VCs, 200 new sites?
- Identified errors in our existing database





The Killer Within: Wasps, but not as you know them

FRED ENOCK
Ooestonus
vulgatus Haliday
♀
PREPARER.

35.
Det. S. Triapitsyn
22. VII. 2008



No 24457.
A-I-Steven coll.

B.M. 1957-632
Mymaridae
Fairy fly.
6/11/08



Project Plumage

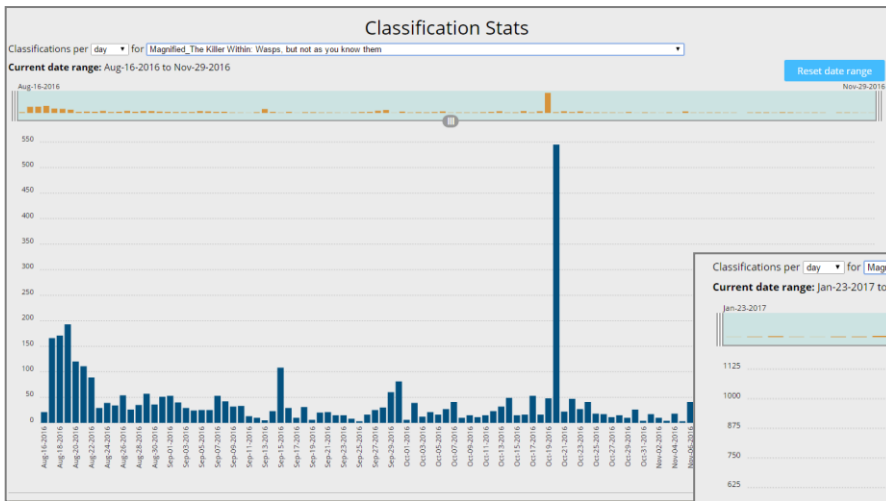


www.projectplumage.org

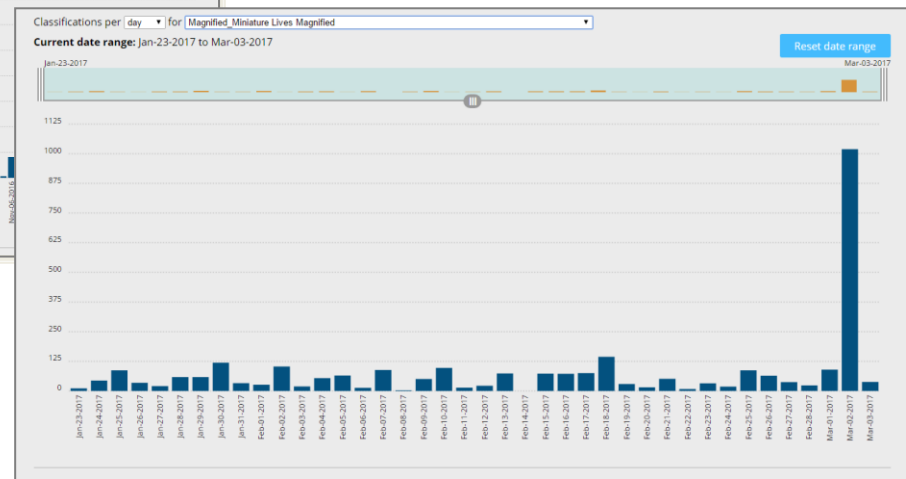
Visiteering

On site crowdsourcing with a behind the scenes tour, talk with a curator and support by museum staff throughout the day.

October 20th 2016 - as part of WeDigBio



March 2nd 2017



LEARN CitSci

Learning and Environmental Science Agency Research Network for Citizen Science

A collaboration between citizen science practitioners and learning researchers in UK and US.

Four year project starting Spring 2017.

Research into the learning outcomes and development of environmental science agency for young people who participate in NHM-led citizen science projects.

We will be studying young people taking part in crowdsourcing projects on the Zooniverse.

Funded by NSF, Wellcome and ESRC.



Pros and cons of the Zooniverse

Pros

- 1 million registered users
- Project builder
- Staff support
- Long-term commitment to the platform
- Publicity and high profile
- Low cost

Cons

- Competition between projects for participants
- Project builder – backlog of projects awaiting approval
- Staff overstretched
- Fairly fixed layout and functionality within the site
- Limited exposure for your brand

Considerations / discussion points

- Its not free! Doing citizen science well requires resources. Cost vs value.
- Its not an 'easy option' – you still need to support and train the volunteers
- It's not suitable in all circumstances or for all collections
- We may need to think of new publicity mechanisms – public events have not been very successful recruitment tools for us.
- It can attract alternative sources of funding for digitisation – how can we exploit that?
- Awareness raising for the cause – why are we digitising all this stuff in the first place? Opportunities for learning, engagement, inspiration, role models

Questions?



l.robinson@nhm.ac.uk



N

**NATURAL
HISTORY
MUSEUM**