

The Macroalgal Herbarium Consortium

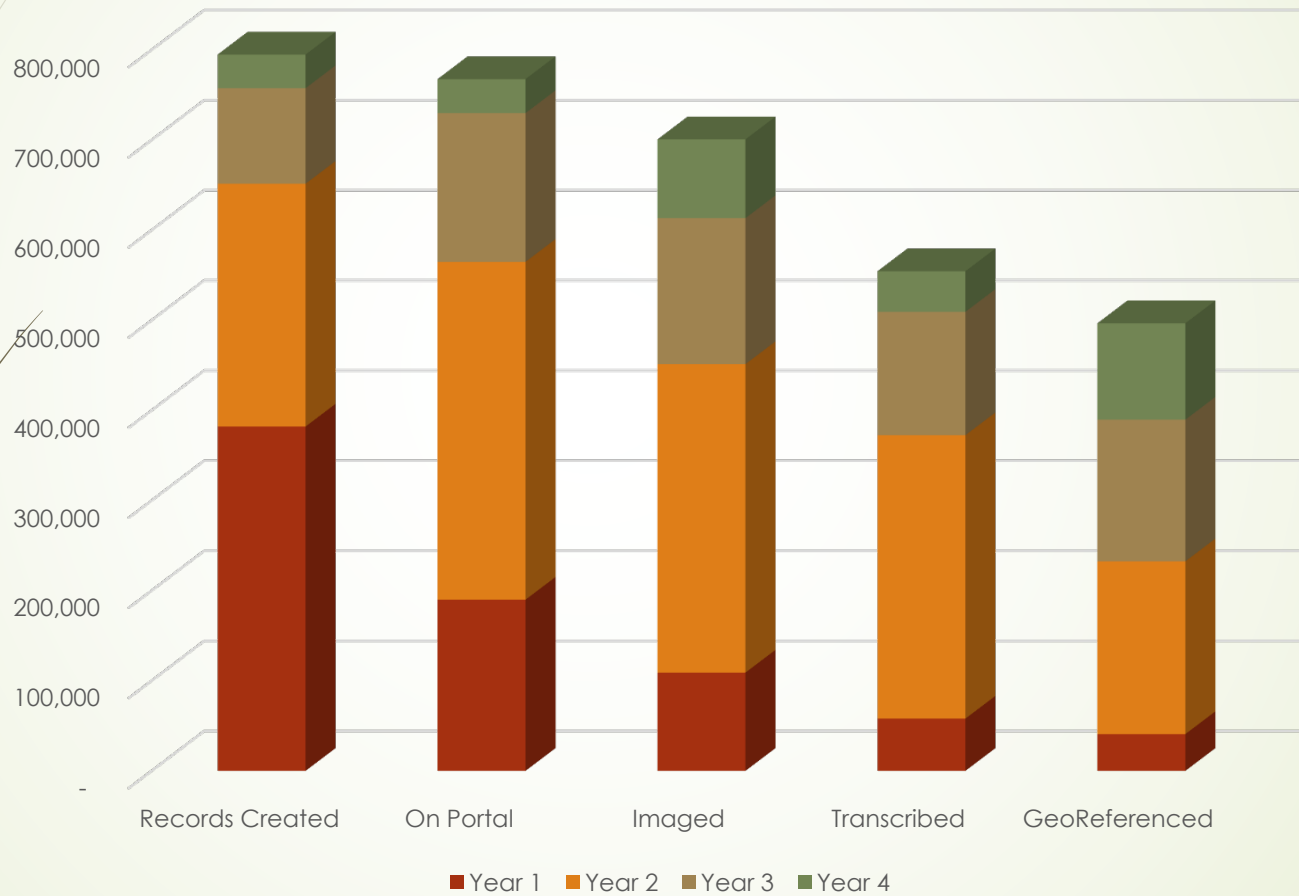
Accessing 150 Years of Specimen Data to Understand
Changes in the Marine/Aquatic Environment



Chris Neefus, Lead P.I.



Progress in Digitization Efforts

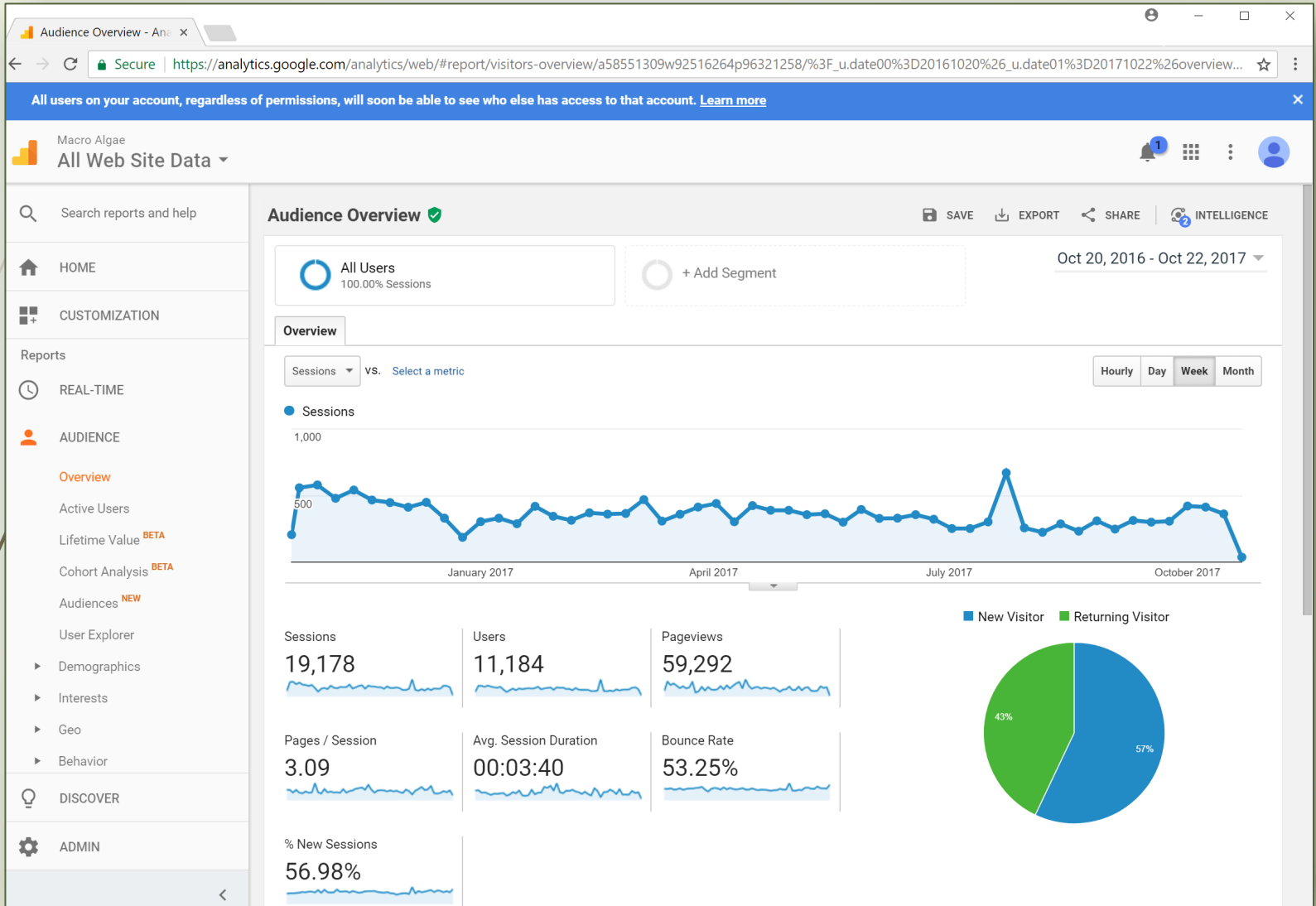


Progress in Digitization Efforts

Digitizing Institution	Start	Collections	Specimens	Percent Complete				
				Records Created	On Portal	Imaged	Transcribed	Geo-referenced
University of New Hampshire	Year 1	10	140,106	<div style="width: 100%;"></div>	<div style="width: 100%;"></div>	<div style="width: 100%;"></div>	<div style="width: 100%;"></div>	<div style="width: 100%;"></div>
New York Botanical Garden	Year 1	5	172,613	<div style="width: 100%;"></div>	<div style="width: 100%;"></div>	<div style="width: 100%;"></div>	<div style="width: 100%;"></div>	<div style="width: 100%;"></div>
University of North Carolina	Year 1	7	58,075	<div style="width: 100%;"></div>	<div style="width: 100%;"></div>	<div style="width: 100%;"></div>	<div style="width: 100%;"></div>	<div style="width: 100%;"></div>
University of Michigan	Year 1	5	95,589	<div style="width: 100%;"></div>	<div style="width: 100%;"></div>	<div style="width: 100%;"></div>	<div style="width: 100%;"></div>	<div style="width: 100%;"></div>
University of Washington	Year 1	3	25,775	<div style="width: 100%;"></div>	<div style="width: 100%;"></div>	<div style="width: 100%;"></div>	<div style="width: 100%;"></div>	<div style="width: 100%;"></div>
Duke University	Year 1	1	17,828	<div style="width: 100%;"></div>	<div style="width: 100%;"></div>	<div style="width: 100%;"></div>	<div style="width: 100%;"></div>	<div style="width: 100%;"></div>
University of Alaska SE	Year 1	1	9,889	<div style="width: 100%;"></div>	<div style="width: 100%;"></div>	<div style="width: 100%;"></div>	<div style="width: 100%;"></div>	<div style="width: 100%;"></div>
Bishop Museum	Year 1	1	65,000	<div style="width: 100%;"></div>	<div style="width: 100%;"></div>	<div style="width: 100%;"></div>	<div style="width: 100%;"></div>	<div style="width: 100%;"></div>
Field Museum	Year 1	1	48,058	<div style="width: 100%;"></div>	<div style="width: 100%;"></div>	<div style="width: 100%;"></div>	<div style="width: 100%;"></div>	<div style="width: 100%;"></div>
Oregon State University	Year 1	1	12,120	<div style="width: 100%;"></div>	<div style="width: 100%;"></div>	<div style="width: 100%;"></div>	<div style="width: 100%;"></div>	<div style="width: 100%;"></div>
University of Guam	Year 1	1	13,600	<div style="width: 100%;"></div>	<div style="width: 100%;"></div>	<div style="width: 100%;"></div>	<div style="width: 100%;"></div>	<div style="width: 100%;"></div>
University of California - Berkeley	Year 2	9	230,869	<div style="width: 100%;"></div>	<div style="width: 100%;"></div>	<div style="width: 100%;"></div>	<div style="width: 100%;"></div>	<div style="width: 100%;"></div>
University of Hawaii	Year 2	1	4,730	<div style="width: 100%;"></div> 1	<div style="width: 100%;"></div> 1	<div style="width: 100%;"></div> 0	<div style="width: 100%;"></div> 1	<div style="width: 100%;"></div> 1
Harvard University	Year 2	1	150,000	<div style="width: 100%;"></div> 0	<div style="width: 100%;"></div> 0	<div style="width: 100%;"></div> 0	<div style="width: 100%;"></div> 0	<div style="width: 100%;"></div> 0
Academy of Natural Sciences	Year 3	1	37,816	<div style="width: 100%;"></div>	<div style="width: 100%;"></div>	<div style="width: 100%;"></div>	<div style="width: 100%;"></div>	<div style="width: 100%;"></div>
University of Vermont	Year 3	1	3,062	<div style="width: 100%;"></div>	<div style="width: 100%;"></div>	<div style="width: 100%;"></div>	<div style="width: 100%;"></div>	<div style="width: 100%;"></div>
Totals		49	1,085,130	<div style="width: 100%;"></div> 794,763	<div style="width: 100%;"></div> 767,535	<div style="width: 100%;"></div> 700,664	<div style="width: 100%;"></div> 554,347	<div style="width: 100%;"></div> 496,605
				<div style="width: 100%;"></div> 1	<div style="width: 100%;"></div> 1	<div style="width: 100%;"></div> 1	<div style="width: 100%;"></div> 1	<div style="width: 100%;"></div> 0

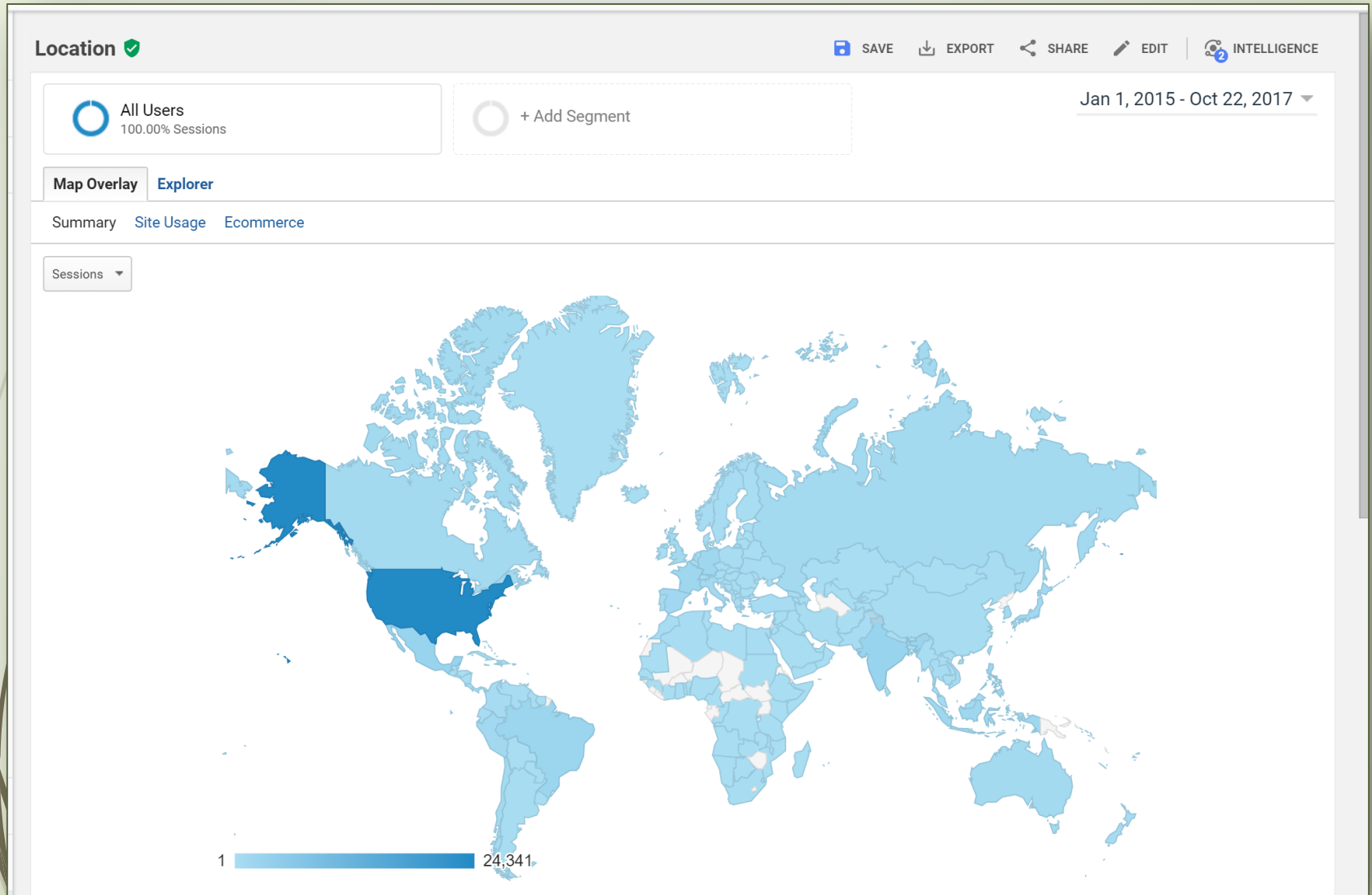
Who is Using the Data?

➔ Google Analytics for Macroalgae.org



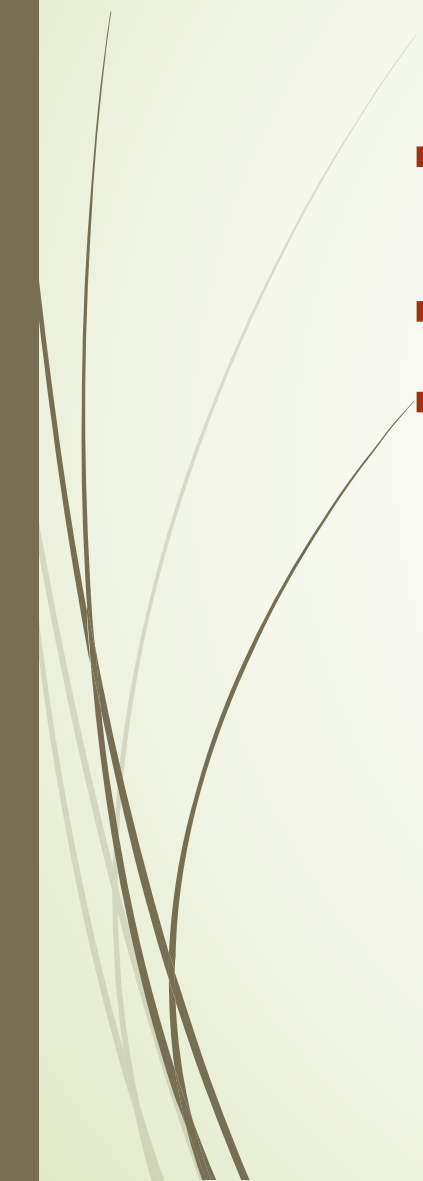
Who is Using the Data?

➤ Google Analytics for Macroalgae.org



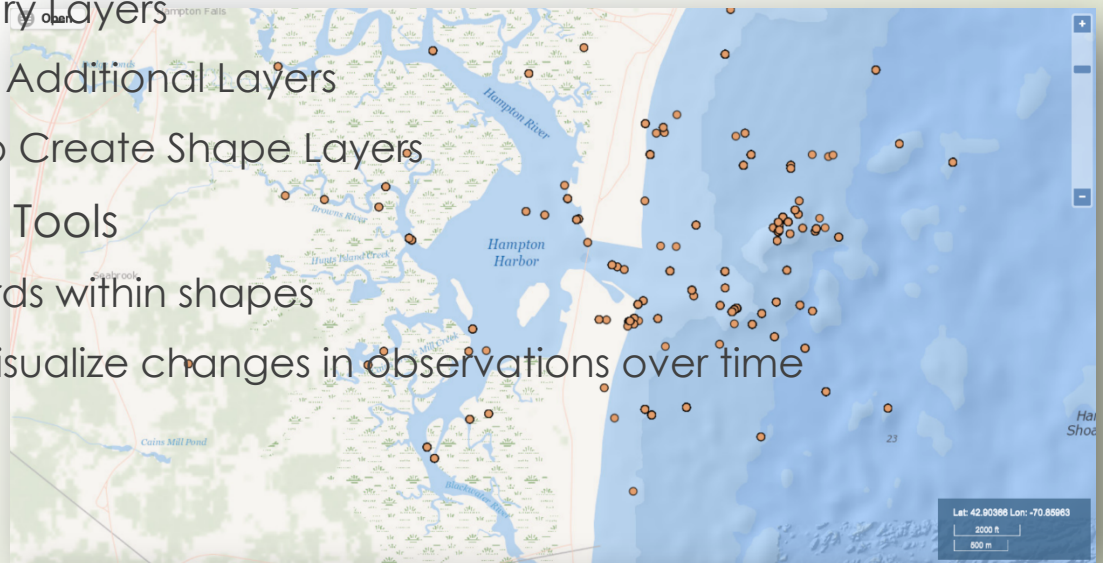


How is the Data Being Used?

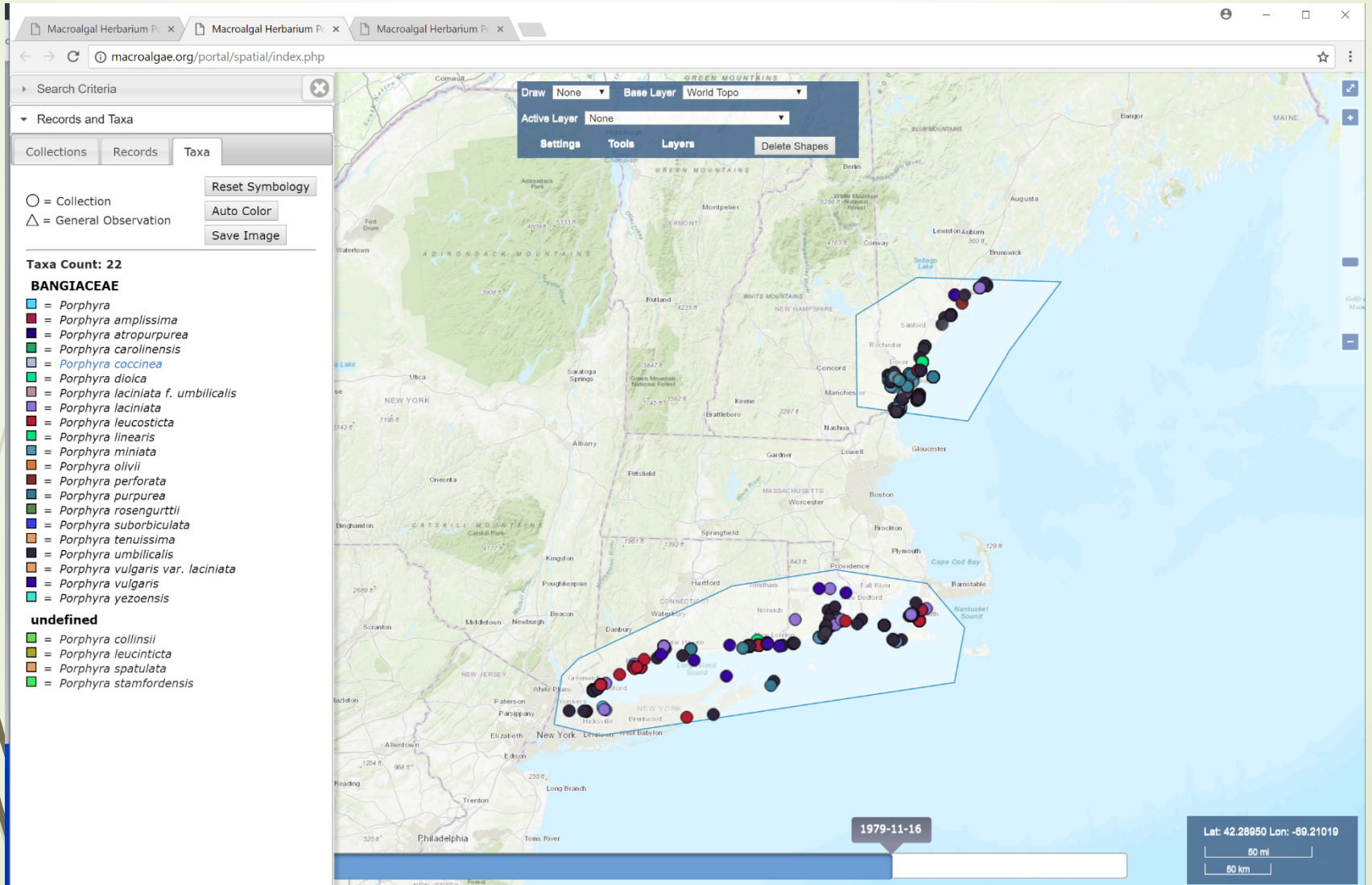
- ▶ Determine when and where a species can be collected
 - ▶ Taxonomic studies
 - ▶ **Biogeographic studies**
 - ▶ Effects of environmental changes or disturbances on species distribution and community structure
 - ▶ Track progression of invasive species and loss/displacement of native species
- 

Spatial Analysis Module

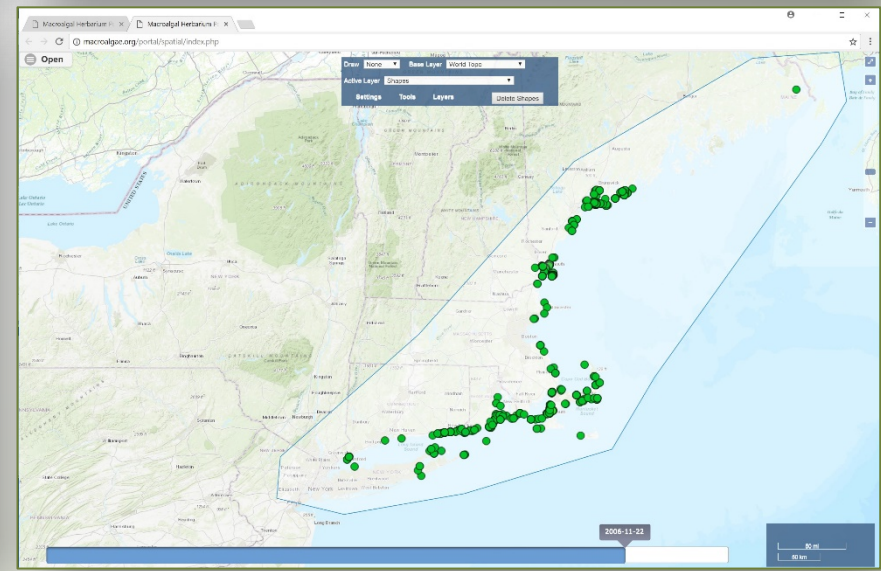
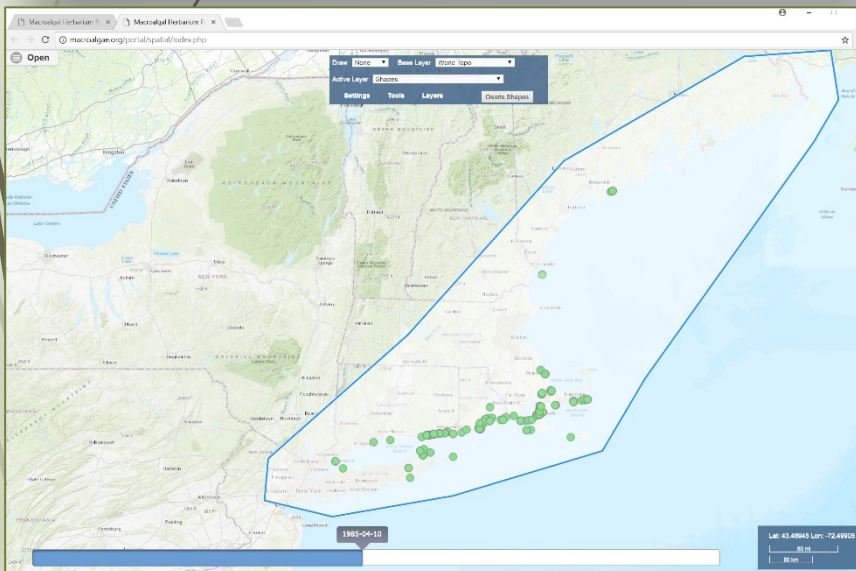
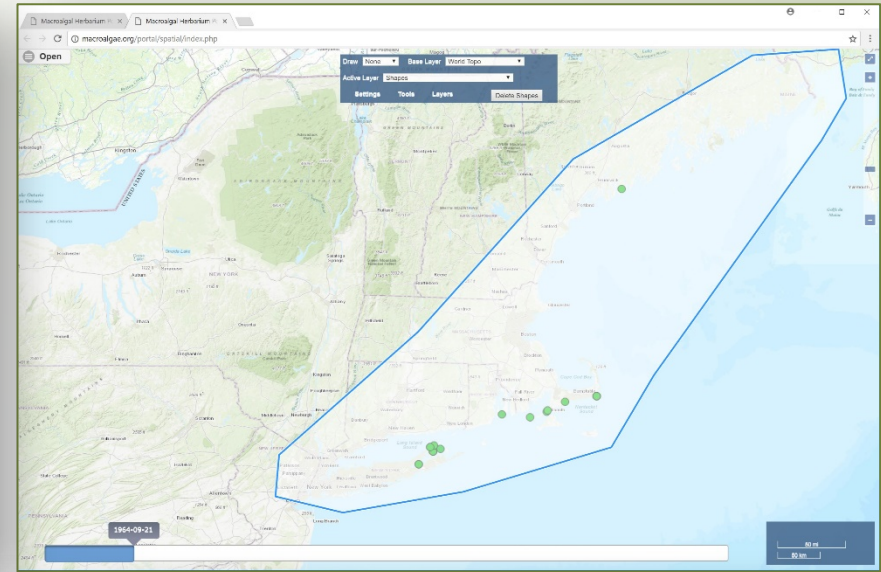
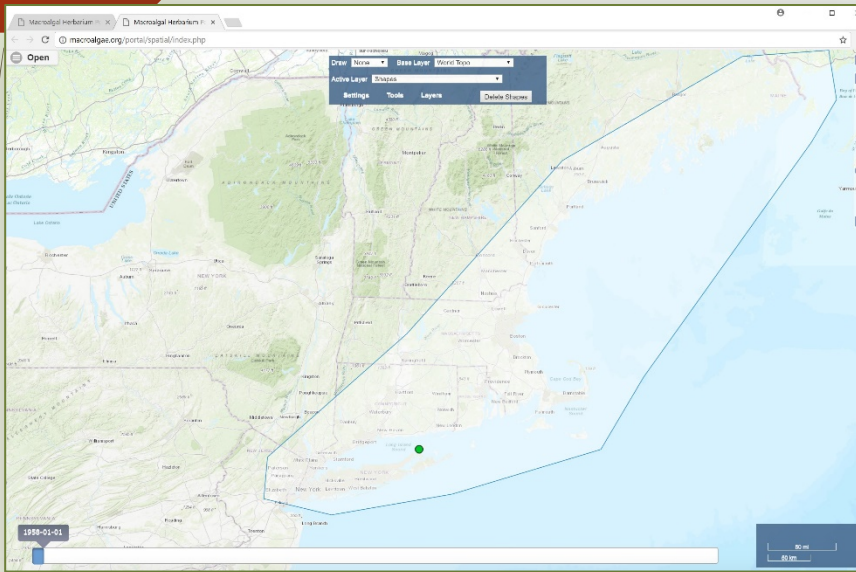
- ▶ Modeled after the Atlas of Living Australia Spatial Module
- ▶ Integrated with Symbiota
- ▶ Far more capabilities than the current Symbiota Map Search
- ▶ GIS Layers
 - ▶ Choice of Base Map Layers
 - ▶ World Climatological Layers
 - ▶ Average and Monthly Temperature, Precipitation, Solar Radiation, Wind
 - ▶ Political Boundary Layers
 - ▶ Ability to Import Additional Layers
 - ▶ Drawing Tools to Create Shape Layers
- ▶ Enhanced Search Tools
 - ▶ Search for records within shapes
 - ▶ Date sliders to visualize changes in observations over time



Spatial Analysis Module



Spatial Analysis Module

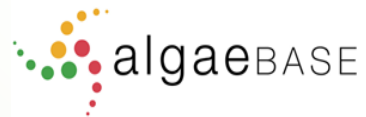




One Lesson Learned?

- **Small Herbaria Are Easier to Digitize than Large Ones**
- 

Acknowledgments



This material is based upon work supported by the National Science Foundation under Grant Number (NSF Grant Number: 1304924). Any opinions, findings, and conclusions or recommendations expressed in this material are those of the author(s) and do not necessarily reflect the views of the National Science Foundation.