



Including students in herbarium digitization efforts

Valdosta State University

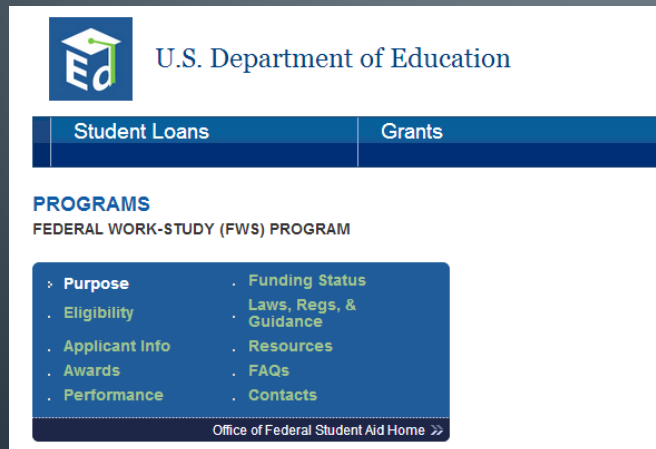
27 January 2015

Emily Gillespie



Sources of student help

- For credit
 - Independent study
 - Capstone/senior projects
- Volunteerism
- Federal Work Study
- ‘Job training’ opportunities!



The screenshot shows the U.S. Department of Education website. At the top left is the 'Ed' logo. To its right is the text 'U.S. Department of Education'. Below this is a navigation bar with two buttons: 'Student Loans' and 'Grants'. Underneath is a section titled 'PROGRAMS' with a sub-heading 'FEDERAL WORK-STUDY (FWS) PROGRAM'. A blue box contains a list of links: Purpose, Eligibility, Applicant Info, Awards, Performance, Funding Status, Laws, Regs, & Guidance, Resources, FAQs, and Contacts. At the bottom of the page is a link for 'Office of Federal Student Aid Home' with a double arrow icon.



Marshall herbarium 2014-2015

9 Federal Work Study students

1 Master's independent study

2 undergraduate Capstone/senior projects

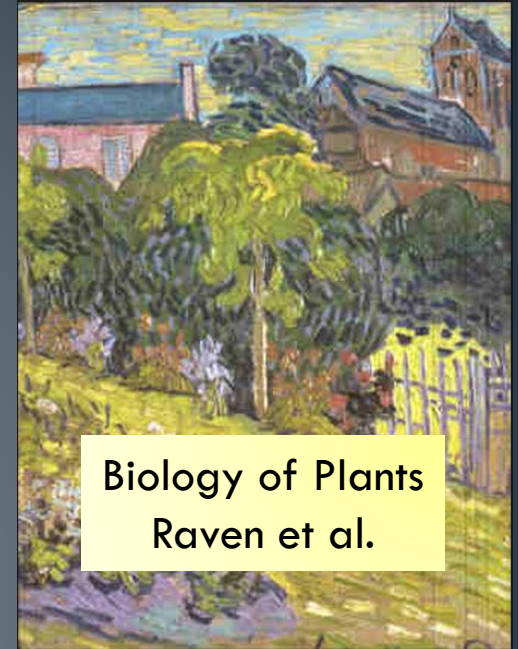
1 undergraduate independent study

2 paid students on ADBC grant

- 1 MS student and 1 FWS student

Challenges with students

- Lack of botanical/taxonomic knowledge
 - No intro botany course, little botany instruction
 - Plant blindness
- Continuity/ predictability
- Boredom
 - Including in ‘actual’ research activities
 - Prep for digitization



I HAS BOREDOM.

Boredom. I has it.

Circumventing lack of botanical training

- Explicit workflows
 - Mounting/repairing specimens
 - Sorting specimens into major plant groups
 - Filing specimens
 - Photography
 - Databasing/georeferencing
 - Data-mining

Sorting specimens by major plant group

- Start with randomly-ordered, newly mounted specimens
- Sort into cubbies based on major plant group
- Problems
 - oddballs: *Ophioglossum*
 - Non-reproductive specimens



Image: M. Barkworth

Filing specimens

- Recent 'linear' classifications
- Problems
 - New families
 - Merged families
 - Old/new names (Compositae/Asteraceae)

Botanical Journal of the Linnean Society, 2009, **161**, 128–131.

The Linear Angiosperm Phylogeny Group (LAPG) III: a linear sequence of the families in APG III

ELSPETH HASTON^{1*}, JAMES E. RICHARDSON¹, PETER F. STEVENS^{2,3}, MARK W. CHASE⁴ and DAVID J. HARRIS¹

¹Royal Botanic Garden Edinburgh, 20a Inverleith Row, Edinburgh, EH3 5LR, UK

²Missouri Botanical Garden, PO Box 299, St Louis, Missouri 63166-0299, USA

³Department of Biology, University of Missouri at St Louis, St Louis, Missouri 63121, USA

⁴Jodrell Laboratory, Royal Botanic Gardens, Kew, Richmond, Surrey, TW9 3DS, UK



Phytotaxa 19: 55–70 (2011)
www.mapress.com/phytotaxa/
Copyright © 2011 Magnolia Press

Article

ISSN 1179-3155 (print edition)
PHYTOTAXA
ISSN 1179-3163 (online edition)



A new classification and linear sequence of extant gymnosperms

MAARTEN J.M. CHRISTENHUSZ¹, JAMES L. REVEAL², ALJOS FARJON³, MARTIN F. GARDNER⁴, ROBERT R. MILL⁴ & MARK W. CHASE⁵

¹Botanical Garden and Herbarium, Finnish Museum of Natural History, Unioninkatu 44, University of Helsinki, 00014 Helsinki, Finland. E-mail: maarten.christenhusz@helsinki.fi

²L. H. Bailey Hortorium, Department of Plant Biology, 412 Mann Building, Cornell University, Ithaca, NY 14853-4301, U.S.A.

³Herbarium, Library, Art & Archives, Royal Botanic Gardens, Kew, Richmond, Surrey, England, TW9 3AB, U.K.

⁴Royal Botanic Garden Edinburgh, 20A Inverleith Row, Edinburgh, EH3 5LR, Scotland, U.K.

⁵Jodrell Laboratory, Royal Botanic Gardens, Kew, Richmond, Surrey, England, TW9 3DS, U.K.

A classification for extant ferns

TAXON

Alan R. Smith¹, Kathleen M. Pryer², Eric Schuettpelz², Petra Korall^{2,3}, Harald Schneider⁴ & Paul G. Wolf⁵

¹University Herbarium, 1001 Valley Life Sciences Building #2465, University of California, Berkeley, California 94720-2465, U.S.A. arsmith@berkeley.edu (author for correspondence).

²Department of Biology, Duke University, Durham, North Carolina 27708-0338, U.S.A.

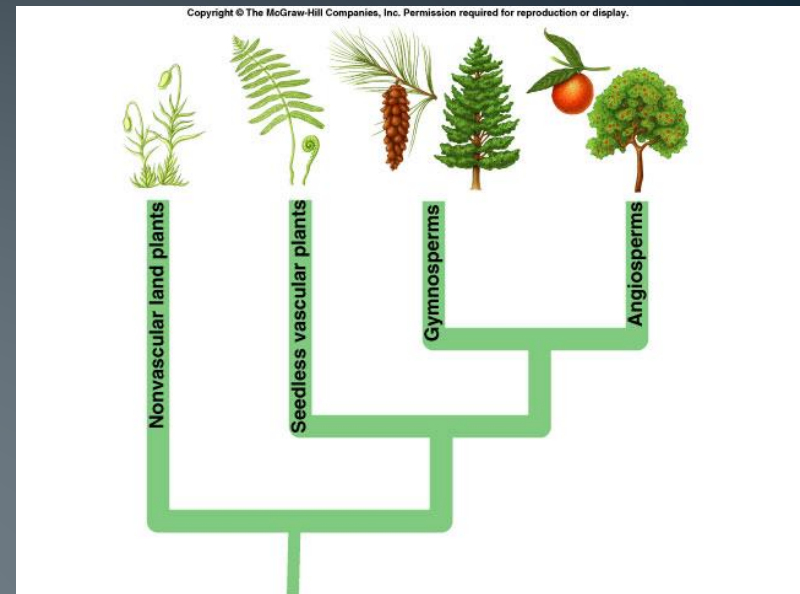
³Department of Phanerogamic Botany, Swedish Museum of Natural History, Box 50007, SE-104 05 Stockholm, Sweden.

⁴Albrecht-von-Haller-Institut für Pflanzenwissenschaften, Abteilung Systematische Botanik, Georg-August-Universität, Untere Karspüle 2, 37073 Göttingen, Germany.

⁵Department of Biology, Utah State University, Logan, Utah 84322-5305, U.S.A.

Solutions

- Step-by-step workflows
 - Flowchart or steps
- Picture references on cabinets
- Classification lists
- Allow students to edit protocols
- Training of ‘middle manager’ students
- Cross-training by seniority
- Scheduling flexibility
- Contact: email, text, call!
- ‘real’ inclusion in research



Alphabetical

Marshall University (MUHW) Angiosperm families (in bold)

Organization based on: Hasten et al. (2009). The Linear Angiosperm Phylogeny Group (LAPG) III: a linear sequence of the families in APG III. *Botanical Journal of the Linnean Society*, 2009, **161**, 128–131.

Acanthaceae378	Bixaceae.....253	Corsiaceae60	Gelsemiaceae.....353
Achariaceae204	Blandfordiaceae.....64	Corynocarpaceae165	Gentianaceae351
Achatocarpaceae297	Bonnetiaceae212	Costaceae88	Geraniaceae215
Acoraceae29	Boraginaceae356	Crassulaceae134	Gerrardinaceae244
Actinidiaceae340	Boryaceae63	Crossosomataceae233	Gesneriaceae367
Adoxaceae405	Brassicaceae/Cruciferae .273	Crypteroniaceae224	Gisekiaceae.....303

Numerical

Marshall University (MUHW) Angiosperm families (in bold)

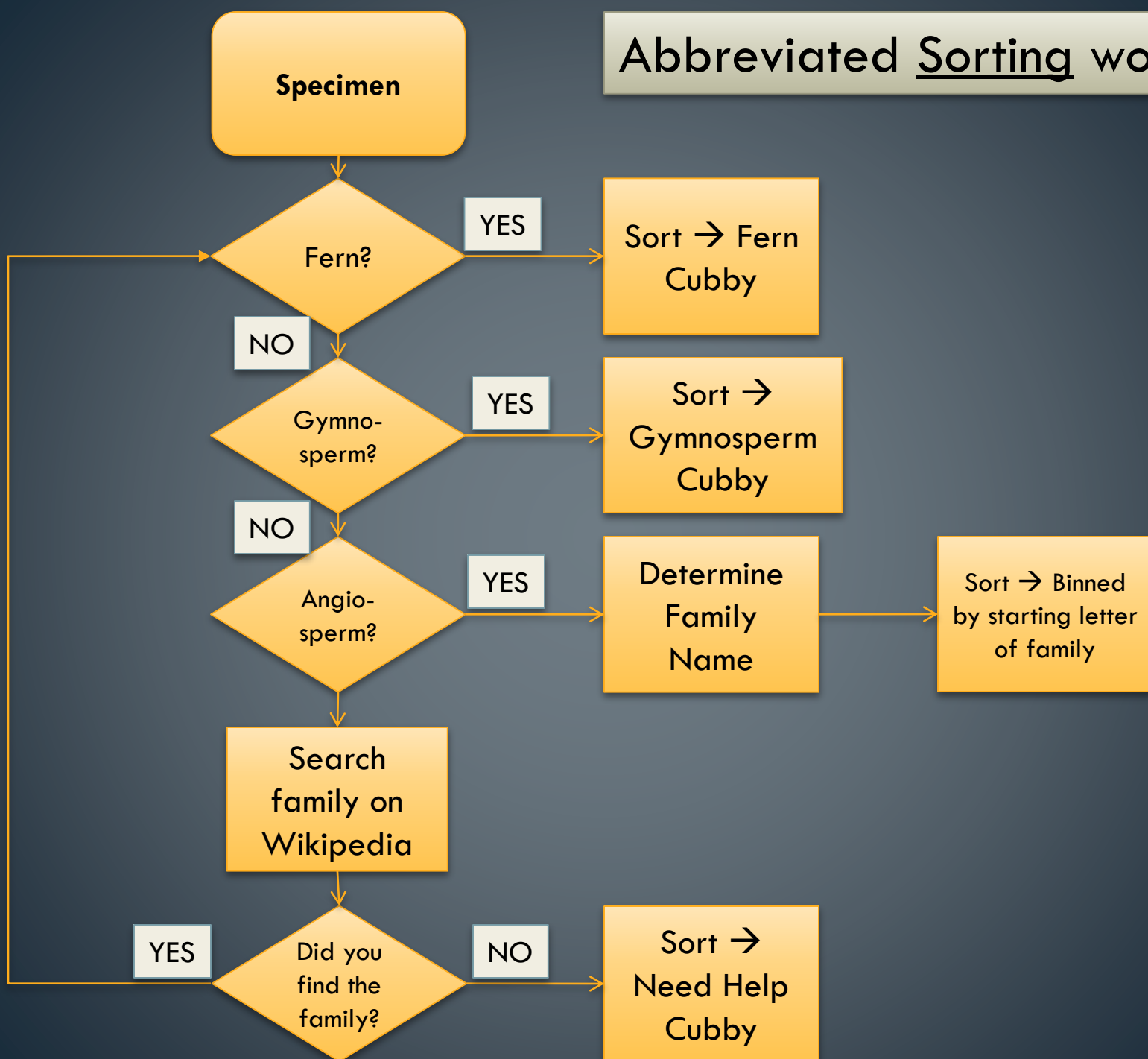
Organization based on: Hasten et al. (2009). The Linear Angiosperm Phylogeny Group (LAPG) III: a linear sequence of the families in APG III. *Botanical Journal of the Linnean Society*, 2009, **161**, 128–131.

Amborellaceae1	Philesiaceae57	Berberidaceae113	Datisceae169
Hydatellaceae2	Ripogonaceae58	Ranunculaceae114	Begoniaceae170
Cabombaceae3	Smilacaceae59	Sabiaceae115	Lepidobotryaceae171
Nymphaeaceae4	Corsiaceae60	Nelumbonaceae116	Celastraceae172
Austrobaileyaaceae5	Liliaceae61	Platanaceae117	Huaceae173
Trimeniaceae6	Orchidaceae62	Proteaceae118	Connaraceae174
Schisandraceae7	Boryaceae63	Trochodendraceae119	Oxalidaceae175
Chloranthaceae8	Blandfordiaceae64	Haptanthaceae120	Cunoniaceae176
Canellaceae9	Asteliaceae65	Buxaceae121	Elaeocarpaceae177

Training status as of Jan. 2015

Name	Mounting	Sorting	Filing
1st cohort-2013			
Kristen	X	X	X
Mirissa	X	X	X
Katrina	X	X	X
Katlyn	X	X	
Rebecca	X	X	
2nd cohort-2014			
Alessandra	X		
Amber	X	X	
Maddie	X		
Ashley	X	X	X

Abbreviated Sorting workflow



Abbreviated Filing workflow

