

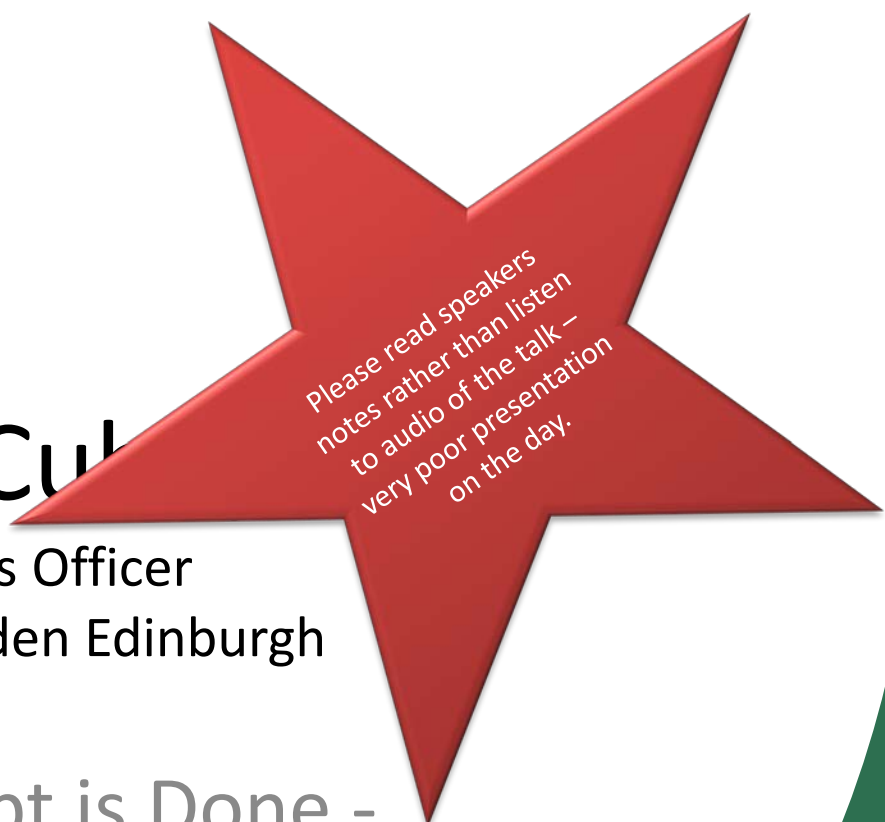


# Robert Cul

Plant Records Officer  
Royal Botanic Garden Edinburgh

Label Transcript is Done -

Now what we do with that Data?



Please read speakers  
notes rather than listen  
to audio of the talk –  
very poor presentation  
on the day.



# Royal Botanic Garden Edinburgh

- Living collections, herbarium & library
- Nearly 3 million herbarium specimens
- Nearly 1 million specimens databased
- Nearly 0.5 million specimens imaged and online





## Two workflows of digitisation

**Gold  
Standard**

**Ongoing  
digitisation**

1. Types
2. Specific taxonomic groups (*Zingiberaceae*)
3. Geographical groups (Specimens from Nepal for Flora of Nepal)

1. Loans
2. Other specimens in a loaned genus or family.
3. Long term digitisation projects (UK)



# Gold Standard Digitisation Workflow

Minimal curation



Assign unique identifier (eg attach barcode)



Initial minimal data capture

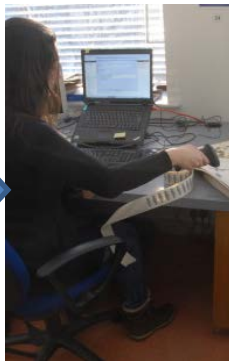


Image specimen (camera or scanner)



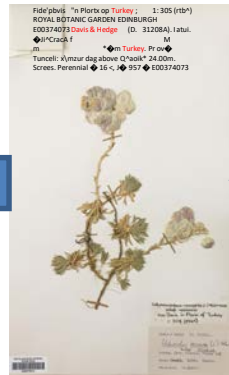
Additional curation



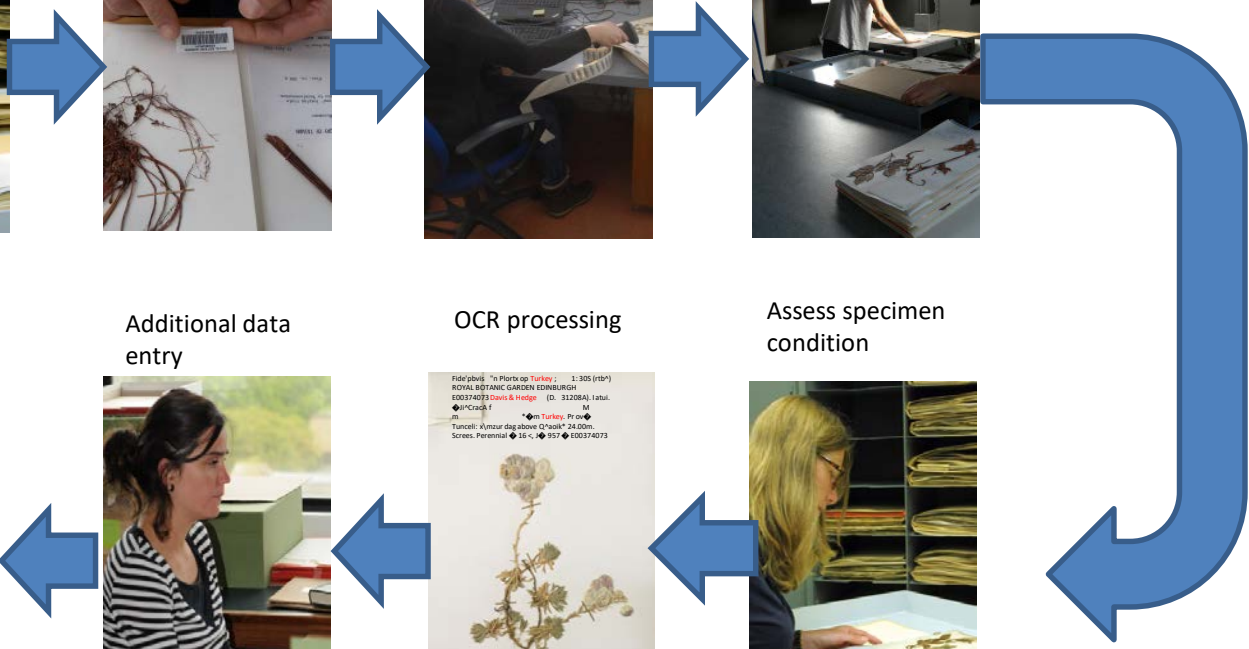
Additional data entry



OCR processing



Assess specimen condition





# Ongoing digitisation

Minimal curation



Assign unique identifier (eg attach barcode)



Initial minimal data capture

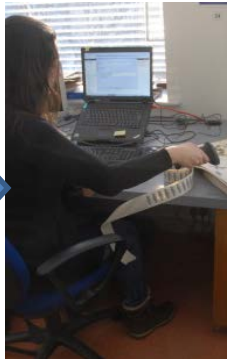
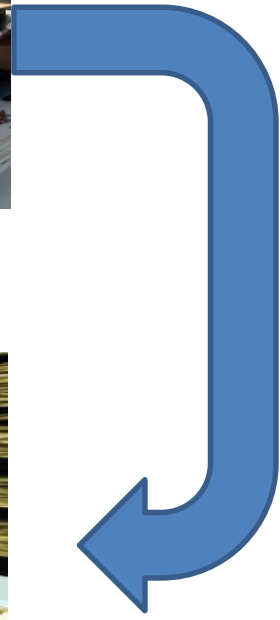


Image specimen (camera or scanner)



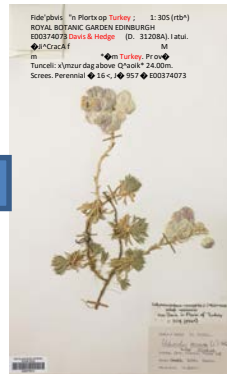
Additional curation



Additional data entry



OCR processing



Assess specimen condition







# Ongoing digitisation

Minimal curation



Assign unique identifier (eg attach barcode)



Initial minimal data capture

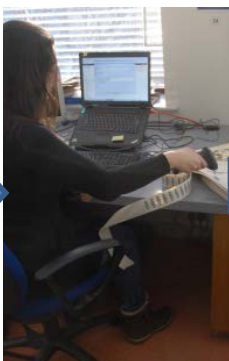
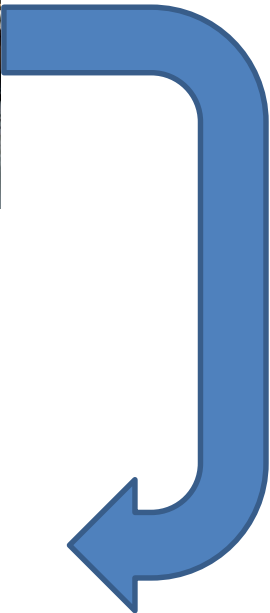
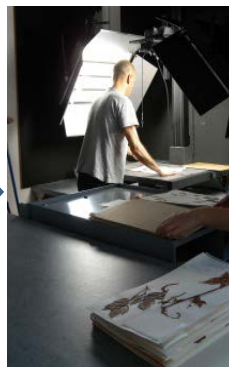


Image specimen (camera or scanner)



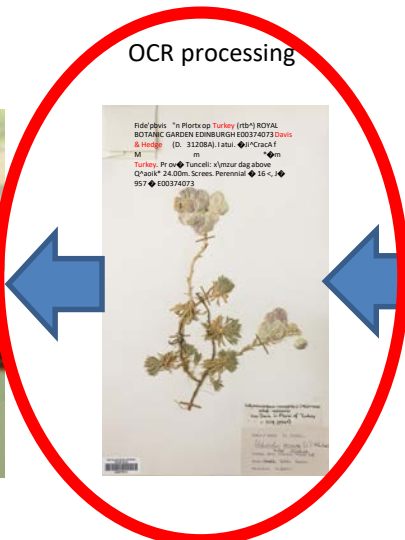
Additional curation



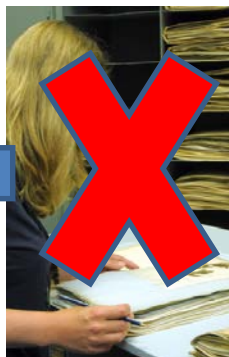
Additional data entry

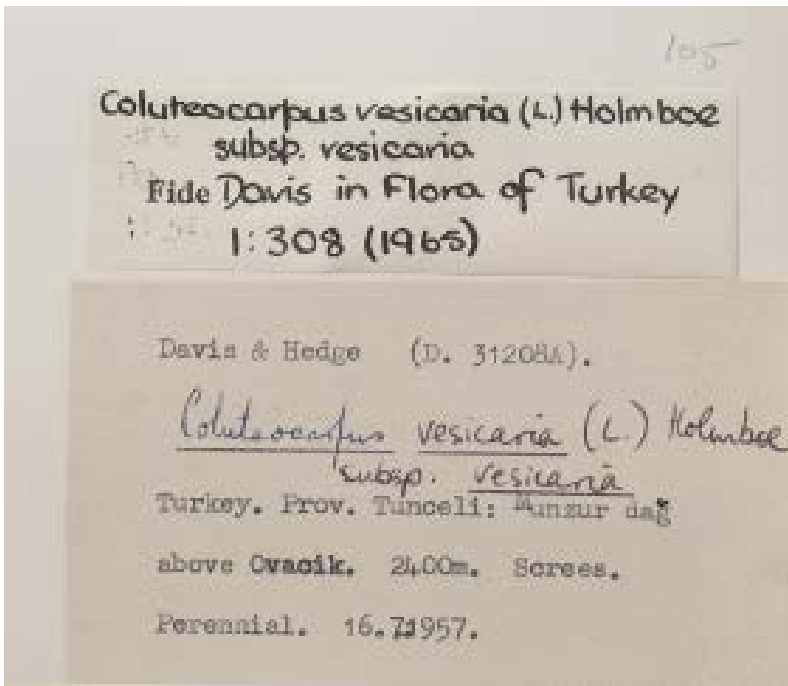


OCR processing



Assess specimen condition





Fide 'pbvis "n Plortx op Turkey ;  
1: 30S (rtb^ ) ROYAL BOTANIC  
GARDEN EDINBURGH E00374073  
Davis & Hedge (D. 31208A). I  
atui. ? Ji^CracA f

M m  
\* ? m Turkey. Pr ov ? Tunceli:  
x\mzur dag above Q^aoik\* 24.00m.  
Screens. Perennial ? 16 <, J ? 957 ?  
E00374073



ABBY

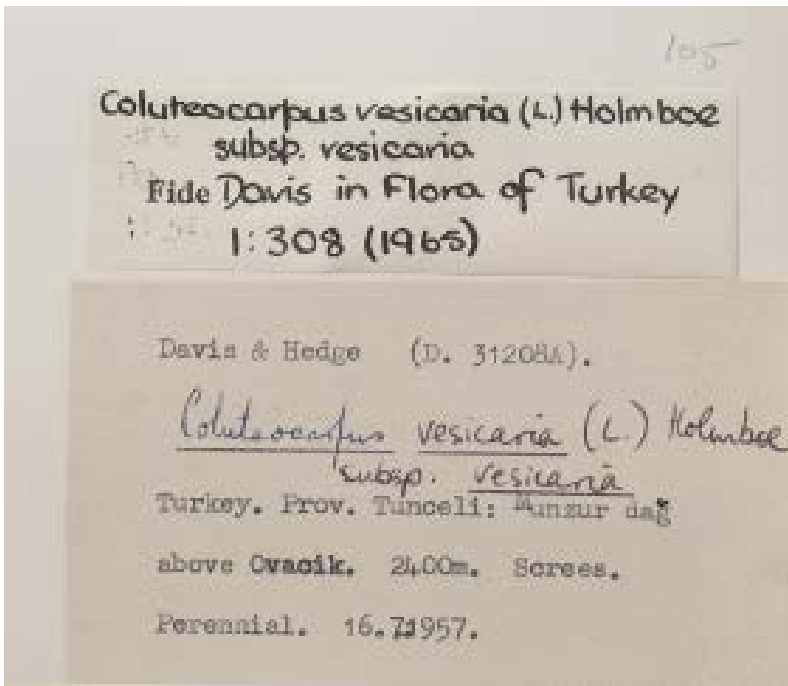
Tesseract

1	<p>E00005024 III 7 8 9 10 copyright reserved ROYAL BOTANIC GARDEN EDINBURGH E00005024</p>	<p>HERB HORT EDINB L ROYAL III BOIA Hreserved copying ROYAL BOTANIC GARDEN mmungwffjjffffwmm EMOSS HERBARI(UHJ) NiFA Ok TRANSVAAL I loä ... ? v *e...** h'mg*t'...?*f&lt; ?&lt;! ;Ykh#74...rÉ i f'an=... v, II g' Zk... dL... c+z</p>
2	<p>E00005028 NATAL PARKS, GAME AND FISH PRESERVATION BOARD NiImp...f.5!/?..V.V?...Z?A&lt;</p>	<p>NATAL PARKS, GAME AND FISH PRESERVATION BOARD Name_I.....</p>
3	<p>E00005029 o m 1?Z .17 MAY</p>	<p>.....z BULL! L L Innnnnnnnnnnn BIVII gs Nw LTD 2441? UKUERPBY LCMATA</p>
4	<p>E00005030</p>	<p>UKUERPBY LCMATA</p>





Criteria		ABBY	Tesseract
Georeference (lat &/or long data)		312 / 3898 (8%)	178/3898 (4.5%)
Scientific name (via IPNI data server)		1005 / 3898 (25.7%)	805 /3898 (20.96%)
Dates	Determination date	106 / 3898 (2.7%)	101 / 3898 (2.6%)
	Accession date	1 / 3898 (0.02%)	1 / 3898 (0.02%)
	Collection date	1042 / 3898 (26.7%)	802 / 3898 (20.6%)



Fide Davis in Flora of Turkey ;  
1: 308 (rtb^)^ ROYAL BOTANIC  
GARDEN EDINBURGH E00374073  
**Davis & Hedge** (D. 31208A). I

atui.  $\diamond$  Ji^CracA f  
M m  
\*  $\diamond$  m Turkey. Pr ov  $\diamond$  **Tunceli**:  
x\mzur dag above Q^aoik\* 24.00m.  
Screes. Perennial  $\diamond$  16 <, J  $\diamond$  957  $\diamond$   
E00374073



### Search the RBGE herbarium catalogue

currently 30% of the total herbarium collection is data based.

Search the RBGE British herbarium catalogue

Family:	Genus:	Species:	
<input type="text"/>	<input type="text"/>	<input type="text"/>	
Collector Surname/Expedition:	Collector's number:	Barcode:	
<input type="text"/>	<input type="text"/>	<input type="text"/>	
Country:	Filing region: <a href="#">Definitions &gt;&gt;</a>	Major taxon group	
<input type="text" value="Any"/>	<input type="text" value="Any"/>	<input type="text" value="Any"/>	
<input type="checkbox"/> Use specimen data extracted via OCR in this search			
Types only <input type="checkbox"/>	Images only <input type="checkbox"/>	Cultivated only <input type="checkbox"/>	Non-Cultivated only <input type="checkbox"/>
<small>Check this box to only return specimens that are types</small>	<small>Check this box to only return specimens that have images</small>	<small>Check this box to only return specimens from cultivated material</small>	<small>Check this box to only return specimens from non-cultivated material</small>
<input type="button" value="Search Catalogue"/>			

Enter the details of the specimens you are trying to locate in the appropriate fields and click "Search Catalogue".

- Entries can be either upper or lower case.
- '\*' can be used as wildcard character at the beginning, end or within any of any search values.
- For example, to search for all genera starting with 'Gent', enter *gent\** in the genus field.
- Multiple search criteria in the same field should be separated by the word 'or'.

For example, to look up both *Gentiana* and *Rhododendron*, enter *gentiana or rhododendron* in the Genus field.

### Searching by collector

When running a search for records based on collector or expedition name the underlying database uses a 'free text index' which results in slightly different behaviour to the other fields. A free text index breaks down both the indexed values and any search terms run against it into individual words and then runs a search of the collectors field in the following manner:

- A single word search term with or without wildcards will behave as normal.
- Multiple query terms without wild cards will be searched for exactly and the results will be anded together. eg. A search for Charles Darwin will return all records in which the collector field contains the words Charles and Darwin.
- Multiple query terms with wild cards will be searched for individually and results for terms with a wild card will be ored

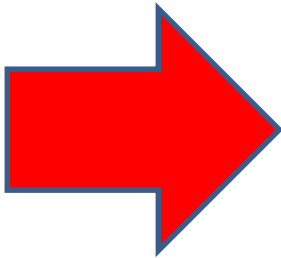


## Herbarium catalogue

### Search the RBGE herbarium catalogue

currently 30% of the total herbarium collection is data based.

Search the RBGE British herbarium catalogue



Family:	Genus:	Species:	
<input type="text"/>	<input type="text"/>	<input type="text"/>	
Collector Surname/Expedition:	Collector's number:	Barcode:	
<input type="text"/>	<input type="text"/>	<input type="text"/>	
Country:	Filing region: <a href="#">Definitions &gt;&gt;</a>	Major taxon group	
<input type="text" value="Any"/>	<input type="text" value="Any"/>	<input type="text" value="Any"/>	
<input type="checkbox"/> Use specimen data extracted via OCR in this search			
Types only <input type="checkbox"/>	Images only <input type="checkbox"/>	Cultivated only <input type="checkbox"/>	Non-Cultivated only <input type="checkbox"/>
<small>Check this box to only return specimens that are types</small>	<small>Check this box to only return specimens that have images</small>	<small>Check this box to only return specimens from cultivated material</small>	<small>Check this box to only return specimens from non-cultivated material</small>
<input type="button" value="Search Catalogue"/>			

Enter the details of the specimens you are trying to locate in the appropriate fields and click "Search Catalogue".

- Entries can be either upper or lower case.
- '\*' can be used as wildcard character at the beginning, end or within any of any search values.
- For example, to search for all genera starting with 'Gent', enter *gent\** in the genus field.
- Multiple search criteria in the same field should be separated by the word 'or'.

For example, to look up both *Gentiana* and *Rhododendron*, enter *gentiana or rhododendron* in the Genus field.

### Searching by collector

When running a search for records based on collector or expedition name the underlying database uses a 'free text index' which results in slightly different behaviour to the other fields. A free text index breaks down both the indexed values and any search terms run against it into individual words and then runs a search of the collectors field in the following manner:

- A single word search term with or without wildcards will behave as normal.
- Multiple query terms without wild cards will be searched for exactly and the results will be anded together. eg. A search for Charles Darwin will return all records in which the collector field contains the words Charles and Darwin.
- Multiple query terms with wild cards will be searched for individually and results for terms with a wild card will be ored



Home



Royal Botanic Garden Edinburgh Herbarium Catalogue

Page 1 of 881 showing Hits 1 to 30 of 26427 with collector = Davis

New query Edit query

Go to page: 1

Next 30 results

Order results by then by then by Sort results

You have 0 items selected for download

Basket options: Download Select all on page Deselect all on page Add all results Empty basket

Family: Compositae Select this record for download

***Aaronsohnia factorovskyi* Warb. & Eig** Name details >>

Collector/Expedition: Davis, Peter Hadland Collector details: >

Collection number: 4023A

Collection date: 04 March 1942

Filing region: West Asia and Egypt

Country of origin: Israel

Barcode: E00588390

Cite as: <http://data.rbge.org.uk/herb/E00588390>

Label data partially captured Full specimen details >>

OCR: OCR details >>



Family: Compositae Select this record for download

***Aaronsohnia factorovskyi* Warb. & Eig** Name details >>

Collector/Expedition: Davis, P.H. Collector details: >

Collection number: 9106

Collection date: 15 April 1945

Filing region: West Asia and Egypt

Country of origin: Jordan

Barcode: E00588392

Cite as: <http://data.rbge.org.uk/herb/E00588392>

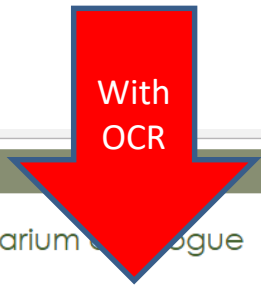
Label data partially captured Full specimen details >>

OCR: OCR details >>



Family: Pinaceae Select this record for download

***Abies*** Name details >>



Home



Royal Botanic Garden Edinburgh Herbarium Catalogue

Page 1 of 1013 showing Hits 1 to 30 of 30388 with collector = Davis AND including OCR data

New query Edit query

Go to page: 1

Next 30 results

Order results by then by then by Sort results

You have items selected for download

Basket options: Download Select all on page Deselect all on page Add all results Empty basket

Family: Compositae Select this record for download

***Aaronsohnia factorovskyi* Warb. & Eig** Name details >>

Collector/Expedition: Davis, Peter Hadland Collector details: >

Collection number: 4023A

Collection date: 04 March 1942

Filing region: West Asia and Egypt

Country of origin: Israel

Barcode: E00588390

Cite as: <http://data.rbge.org.uk/herb/E00588390>

Label data partially captured Full specimen details >>

OCR: OCR details >>



Family: Compositae Select this record for download

***Aaronsohnia factorovskyi* Warb. & Eig** Name details >>

Collector/Expedition: Davis, P.H. Collector details: >

Collection number: 9106

Collection date: 15 April 1945

Filing region: West Asia and Egypt

Country of origin: Jordan

Barcode: E00588392

Cite as: <http://data.rbge.org.uk/herb/E00588392>

Label data partially captured Full specimen details >>

OCR: OCR details >>

Family: Pinaceae Select this record for download





Home



# Royal Botanic Garden Edinburgh Herbarium catalogue

Page 1 of 1 showing Hits 1 to 25 of 25 with genus = Cachrys AND collector = Davis AND including OCR data

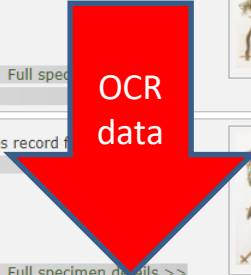
New query Edit query

Order results by [dropdown] then by [dropdown] then by [dropdown] [Sort results](#)

You have 30388 items selected for download

Basket options: [Download](#) [Select all on page](#) [Deselect all on page](#) [Add all results](#) [Empty basket](#)

<p>Family: Umbelliferae</p> <p><b><i>Cachrys</i></b></p> <p>Filing region: North Africa</p> <p>Country of origin: Not recorded</p> <p>Barcode: E00791771</p> <p>Cite as: <a href="http://data.rbge.org.uk/herb/E00791771">http://data.rbge.org.uk/herb/E00791771</a></p> <p>Label data partially captured</p> <p>OCR: has no matches</p>	<p>Select this record for download <input checked="" type="checkbox"/></p> <p><a href="#">Name details &gt;&gt;</a></p> <p><a href="#">Full specimen details &gt;&gt;</a></p>	
<p>Family: Umbelliferae</p> <p><b><i>Cachrys</i></b></p> <p>Filing region: North Africa</p> <p>Country of origin: Not recorded</p> <p>Barcode: E00791772</p> <p>Cite as: <a href="http://data.rbge.org.uk/herb/E00791772">http://data.rbge.org.uk/herb/E00791772</a></p> <p>Label data partially captured</p> <p>OCR: has no matches</p>	<p>Select this record for download <input type="checkbox"/></p> <p><a href="#">Name details &gt;&gt;</a></p> <p><a href="#">Full specimen details &gt;&gt;</a></p> <p><a href="#">OCR details &gt;&gt;</a></p>	
<p>Family: Umbelliferae</p> <p><b><i>Cachrys acaulis</i> DC.</b></p> <p>Filing region: West Asia and Egypt</p> <p>Country of origin: Not recorded</p> <p>Barcode: E00787459</p> <p>Cite as: <a href="http://data.rbge.org.uk/herb/E00787459">http://data.rbge.org.uk/herb/E00787459</a></p> <p>Label data partially captured</p> <p>OCR: has no matches</p>	<p>Select this record for download <input checked="" type="checkbox"/></p> <p><a href="#">Name details &gt;&gt;</a></p> <p><a href="#">Full specimen details &gt;&gt;</a></p> <p><a href="#">OCR details &gt;&gt;</a></p>	

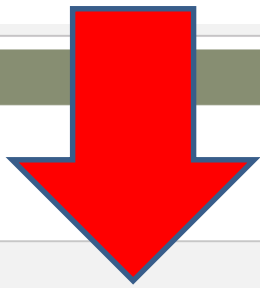




Home



Royal Botanic Garden Edinburgh Herbarium catalogue



OCR text matching Cachrys,Davis

:! I /A \ \ L k Q dLUZI sill g?5I \ J si O I (\* r c" ^ ^... /ft,. #? ^ y vV A, jLc-C^' ' Davis 55590 / ;f[ (J U "> - a. c-ts K <s ROYAL BOTANIC GARDEN ED EO BURG 791771 MOROCCO . 'Ms Moulay-Bou-3elham ( N. of Kenitpa)o 10-30 m. Sand dunes. Perennial, 27 July 1973o E00791771



[Return to previous results page](#)



# Ongoing digitisation

Minimal curation



Assign unique identifier (eg attach barcode)



Initial minimal data capture

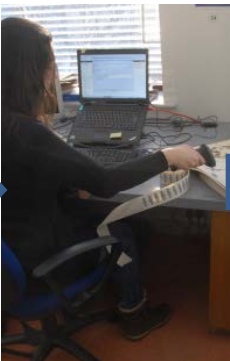


Image specimen (camera or scanner)



Additional curation



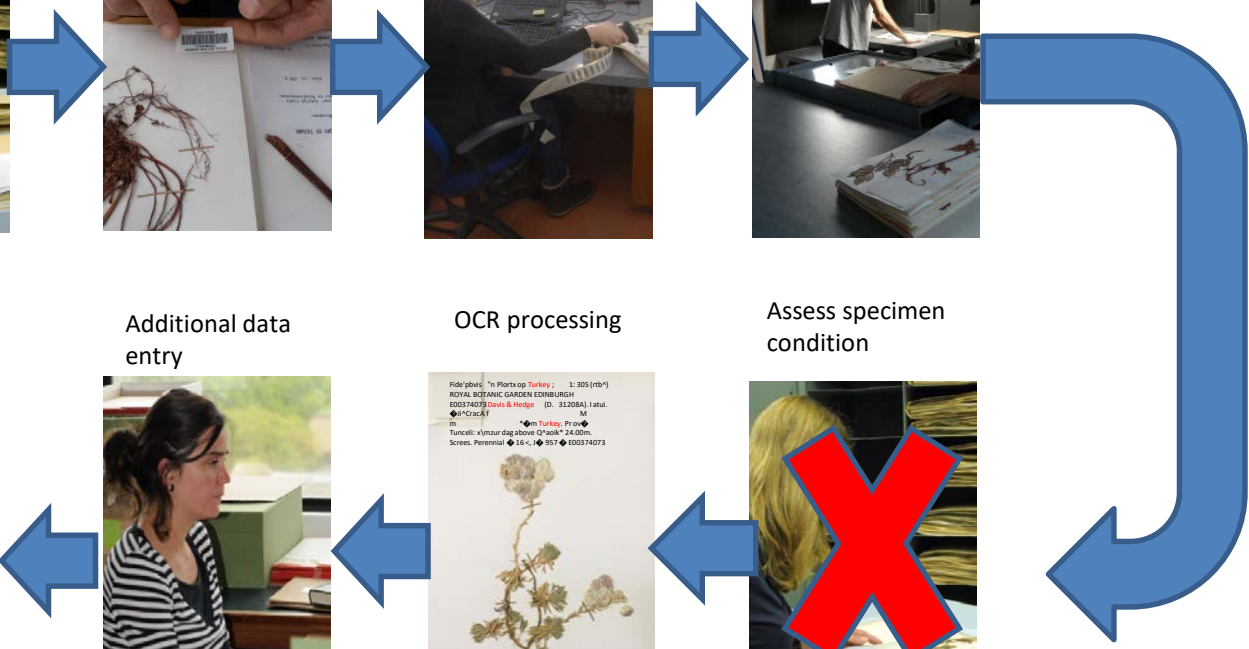
Additional data entry



OCR processing



Assess specimen condition





# Ongoing digitisation

Minimal curation



Assign unique identifier (eg attach barcode)



Initial minimal data capture

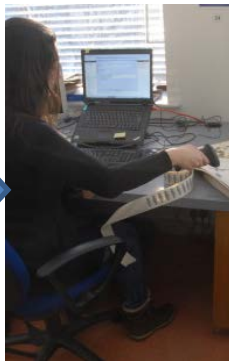
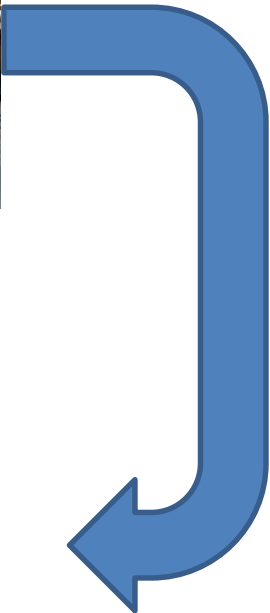
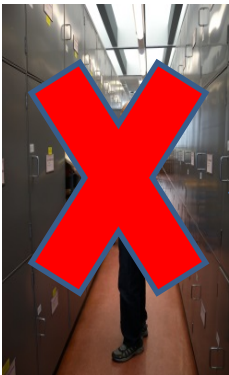


Image specimen (camera or scanner)



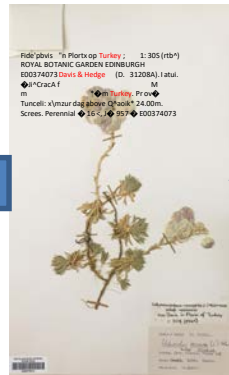
Additional curation



Additional data entry



OCR processing



Assess specimen condition



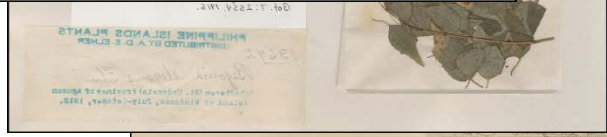




NEW ENGLAND BOTANICAL GARDEN  
00112001



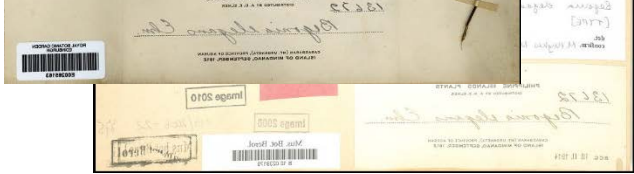
PHILIPPINE ISLANDS PLANTS  
DISTRIBUTED BY A. S. B. KRAMER  
1937  
*Begonia filipes* C. M.  
REPRODUCED BY THE UNIVERSITY OF CALIFORNIA  
HERBARIUM AND THE UNIVERSITY OF MICHIGAN  
LIBRARY



PHILIPPINE ISLANDS PLANTS  
DISTRIBUTED BY A. S. B. KRAMER  
1937  
*Begonia filipes* C. M.  
REPRODUCED BY THE UNIVERSITY OF CALIFORNIA  
HERBARIUM AND THE UNIVERSITY OF MICHIGAN  
LIBRARY



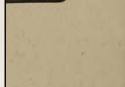
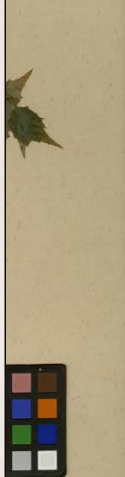
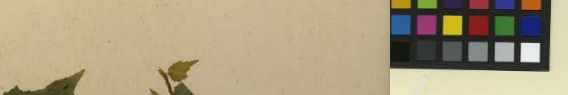
PHILIPPINE ISLANDS PLANTS  
DISTRIBUTED BY A. S. B. KRAMER  
1937  
*Begonia filipes* C. M.  
REPRODUCED BY THE UNIVERSITY OF CALIFORNIA  
HERBARIUM AND THE UNIVERSITY OF MICHIGAN  
LIBRARY



PHILIPPINE ISLANDS PLANTS  
DISTRIBUTED BY A. S. B. KRAMER  
1937  
*Begonia filipes* C. M.  
REPRODUCED BY THE UNIVERSITY OF CALIFORNIA  
HERBARIUM AND THE UNIVERSITY OF MICHIGAN  
LIBRARY



PHILIPPINE ISLANDS PLANTS  
DISTRIBUTED BY A. S. B. KRAMER  
1937  
*Begonia filipes* C. M.  
REPRODUCED BY THE UNIVERSITY OF CALIFORNIA  
HERBARIUM AND THE UNIVERSITY OF MICHIGAN  
LIBRARY



PHILIPPINE ISLANDS PLANTS  
DISTRIBUTED BY A. S. B. KRAMER  
1937  
*Begonia filipes* C. M.  
REPRODUCED BY THE UNIVERSITY OF CALIFORNIA  
HERBARIUM AND THE UNIVERSITY OF MICHIGAN  
LIBRARY



PHILIPPINE ISLANDS PLANTS  
DISTRIBUTED BY A. S. B. KRAMER  
1937  
*Begonia filipes* C. M.  
REPRODUCED BY THE UNIVERSITY OF CALIFORNIA  
HERBARIUM AND THE UNIVERSITY OF MICHIGAN  
LIBRARY



PHILIPPINE ISLANDS PLANTS  
DISTRIBUTED BY A. S. B. KRAMER  
1937  
*Begonia filipes* C. M.  
REPRODUCED BY THE UNIVERSITY OF CALIFORNIA  
HERBARIUM AND THE UNIVERSITY OF MICHIGAN  
LIBRARY





## External aggregators

GeneBank



Collection and management of specimen, distributional, and molecular data as well as analytical tools to support their validation.

BOLD

BOLDSYSTEMS

A genetic sequence database, an annotated collection of all publicly available DNA sequences

BioCase



An international network of European biological collections. Using open-source, software and open data standards and protocols.

EOL



Online collaborative encyclopaedia to document all of the 1.9 million species of life on earth.

Global  
Plants



The world's largest database of digitized plant specimens & a locus for international scientific research and collaboration

iDigBio



New Tools for Increasing the Use of Natural History Collections for Research, Education and Informed Decision making

GBIF



International Biodiversity data on distribution plants, animals, fungi, microbes and scientific names data

Europeana



Multi-lingual online collection of millions of digitized items from European museums, libraries, archives and multi-media collections.

CRIA  
Species link



The goal of the speciesLink network is to integrate specie and specimen data available in natural history museums,

NBN



Information network of UK biodiversity data from nature agencies, wildlife trusts & museums

ALS



Provides a platform for the collection, aggregation, analysis and use of biological data in Scotland.





# Data aggregators

Get data Share Tools Inside GBIF + ✖ 🔍 🗨️ cubey

Occurrences 5

Search all fields 🔍

Simple Advanced

License    
 Scientific name    
 Begoniaceae    
 Basis of record    
 Preserved specimen    
 Location    
 Year    
 Between start of 1910 and end of 1912    
 Month    
 September    
 Dataset    
 Country or area    
 Philippines    
 Issues and flags    
 Media type    
 Publisher    
 Institution code    
 Collection code    
 Catalog number

Scientific name	Country or area	Coordinates	Month & year	Basis of record	Dataset	Kingdom	Phylum	Class
<i>Begonia sarmentosa</i> L.B.Sm. & Washc.	Philippines		1912 September	Preserved specimen	Herbarium Hamburgense	Plantae	Tracheophyta	Magnoliopsi
<i>Begonia urdanensis</i> Elmer	Philippines		1912 September	Preserved specimen	NMNH Extant Specimen Records	Plantae	Tracheophyta	Magnoliopsi
<i>Begonia elegans</i> Elmer	Philippines		1912 September	Preserved specimen	The vascular plants collection (P) at the ...	Plantae	Tracheophyta	Magnoliopsi
<i>Begonia elegans</i> Elmer	Philippines		1912 September	Preserved specimen	Harvard University Herbaria	Plantae	Tracheophyta	Magnoliopsi
<i>Begonia urdanensis</i> Elmer	Philippines		1912 September	Preserved specimen	Tropicos Specimen Data	Plantae	Tracheophyta	Magnoliopsi
<i>Begonia urdanensis</i> Elmer	Philippines	0.0N, 0.0E	1912 September	Preserved specimen	The New York Botanical Garden Herbariu...	Plantae	Tracheophyta	Magnoliopsi
<i>Begonia urdanensis</i> Elmer	Philippines		1912 September	Preserved specimen	Herbarium Hamburgense	Plantae	Tracheophyta	Magnoliopsi
<i>Begonia elegans</i> Elmer	Philippines	0.0N, 0.0E	1912 September	Preserved specimen	The New York Botanical Garden Herbariu...	Plantae	Tracheophyta	Magnoliopsi
<i>Begonia urdanensis</i> Elmer	Philippines		1912 September	Preserved specimen	Bernice P. Bishop Museum	Plantae	Tracheophyta	Magnoliopsi
<i>Begonia elegans</i> Elmer	Philippines		1912 September	Preserved specimen	Bernice P. Bishop Museum	Plantae	Tracheophyta	Magnoliopsi
<i>Begonia elegans</i> Elmer	Philippines		1912 September	Preserved specimen	NMNH Extant Specimen Records	Plantae	Tracheophyta	Magnoliopsi
<i>Begonia elegans</i> Elmer	Philippines		1912 September	Preserved specimen	Bernice P. Bishop Museum	Plantae	Tracheophyta	Magnoliopsi
<i>Begonia elegans</i> Elmer	Philippines		1912 September	Preserved specimen	Tropicos Specimen Data	Plantae	Tracheophyta	Magnoliopsi
<i>Begonia caricicola</i> Merr.	Philippines		1911 September	Preserved specimen	NMNH Extant Specimen Records	Plantae	Tracheophyta	Magnoliopsi
<i>Begonia nigritarum</i> Sleud.	Philippines		1910 September	Preserved specimen	NMNH Extant Specimen Records	Plantae	Tracheophyta	Magnoliopsi
<i>Begonia nigritarum</i> Sleud.	Philippines		1910 September	Preserved specimen	NMNH Extant Specimen Records	Plantae	Tracheophyta	Magnoliopsi
<i>Begonia palawanensis</i> Merr.	Philippines		1910 September	Preserved specimen	The vascular plants collection (P) at the ...	Plantae	Tracheophyta	Magnoliopsi
<i>Begonia suborbiculata</i> Merr.	Philippines		1910 September	Preserved specimen	NMNH Extant Specimen Records	Plantae	Tracheophyta	Magnoliopsi
<i>Begonia palawanensis</i> Merr.	Philippines		1910 September	Preserved specimen	NMNH Extant Specimen Records	Plantae	Tracheophyta	Magnoliopsi
<i>Begonia suborbiculata</i> Merr.	Philippines		1910 September	Preserved specimen	Herbarium Berolinense	Plantae	Tracheophyta	Magnoliopsi



## speciesLink

## dataCleaning

português

This tool aims at helping curators in identifying possible errors and to standardize data. Records are not modified. The system just presents "suspect" records, recommending that they be checked by each author or curator. The tool is under constant development, so any suggestion is more than welcome.

Select a collection

<b>collection:</b> E	
total number of records online	10616
- without coordinates	10086
- georeferenced	530
- access to georeferenced data denied	0
- in the sea	46
- blank catalognumber	0

### repeated records

catalog number	0
duplicate records	0
collector's name and number	740

### last update - error logs

of the collection: 23-02-2015 of dataCleaning: 24-02-2015

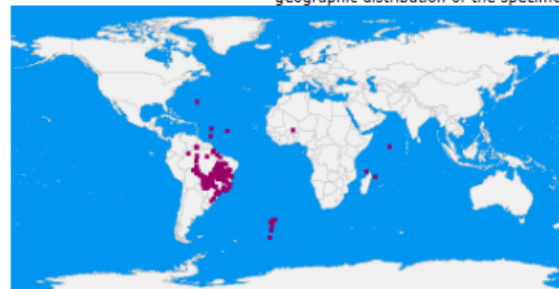
### taxonomic data

inventory	scientific name - collector - identifier - types
kingdom	not found
family	not found
genus	23 suspect records
species	14 suspect records
subspecies	not found
author	not found
duplicate	1021 suspect records
other inconsistencies	not found

### date collected

collected before 1900	not found
last update previous to date collected	1 suspect records
identification year previous to date collected	not found

geographic distribution of the specimens



collection profile  
dataCleaning statistics  
geographic coordinates analysis

### locality data

inventory	country - state - municipality
name of the country/state	196 suspect records
outlier	22 suspect records
long/lat outside the world limit	not found
equal long/lat	not found
long or lat equal to zero	1 suspect records
long/lat in the sea (Brazil)	44 suspect records
municipality name (Brazil)	89 suspect records
coordinate unit analysis (Brazil)	not found
other inconsistencies	1 suspect records

### suggestions for blank fields

long/lat (Brazil)	15 suggestions
country/state name	44 suggestions
municipality name (Brazil)	147 suggestions



Brooks, R.R.; Reeves, R.D.	665	1990-06-26	<a href="#">E E00295977</a>	Myrtaceae	<i>Unk. Myrtaceae</i>						23 Feb 2015
Brooks, R.R.	665	1990-06-26	<a href="#">UFG 12964</a>	Myrtaceae	<i>Eugenia</i>	<i>piloensis</i>	Proença, C.	1992	Goiás	Barro Alto	08 Dec 2017
Brooks, R.R.; Reeves, R.D.	668	1990-06-26	<a href="#">E E00295976</a>	Myrtaceae	<i>Unk. Myrtaceae</i>						23 Feb 2015
R.R. Brooks; R. D. Reeves	668	1990-06-26	<a href="#">ASU-Plants 55230</a>	Myrtaceae	<i>Myrcia</i>	<i>guyanensis</i>	Holst, 1999		Goiás		25 Nov 2015
Brooks, R.R.	668	1990-06-26	<a href="#">UFG 12967</a>	Myrtaceae	<i>Myrcia</i>	<i>mutabilis</i>	Proença, C.	1992	Goiás	Barro Alto	08 Dec 2017
Brooks, R.R.; Reeves, R.D.	669	1990-06-26	<a href="#">E E00281829</a>	Boraginaceae	<i>Heliotropium</i>	<i>salicoides</i>					23 Feb 2015
Brooks, R.R. & Reeves, R.D.	669	1990-06-26	<a href="#">SJRJ 31701</a>	Boraginaceae	<i>Euploca</i>	<i>salicoides</i>			Goiás	Barro Alto	25 Jun 2018
Brooks, R.R.; Reeves, R.D.	670	1990-06-26	<a href="#">E E00281828</a>	Convolvulaceae	<i>Cuscuta</i>	<i>filiformis</i>					23 Feb 2015
Brooks, R.R.; Reeve, R.D.	670	1990-06-26	<a href="#">UFG 12969</a>	Lauraceae	<i>Cassytha</i>	<i>filiformis</i>	Bucci, F.	1993-09-29	Goiás	Barro Alto	08 Dec 2017
Brooks, R.R.; Reeves, R.D.	682	1990-06-26	<a href="#">E E00295975</a>	Myrtaceae	<i>Unk. Myrtaceae</i>						23 Feb 2015



Brooks, R.R.; Reeves, R.D.	665	1990-06-26	<a href="#">E E00295977</a>	Myrtaceae	<del>SP</del> Unk. Myrtaceae						23 Feb 2015
Brooks, R.R.	665	1990-06-26	<a href="#">UFG 12964</a>	Myrtaceae	<del>SP</del> <i>Eugenia</i>	<i>piloensis</i>	Proença, C.	1992	Goiás	Barro Alto	08 Dec 2017
Brooks, R.R.; Reeves, R.D.	668	1990-06-26	<a href="#">E E00295976</a>	Myrtaceae	<del>SP</del> Unk. Myrtaceae						23 Feb 2015
R.R. Brooks; R. D. Reeves	668	1990-06-26	<a href="#">ASU-Plants 55230</a>	Myrtaceae	<del>SP</del> <i>Myrcia</i>	<i>guianensis</i>	Holst, 1999		Goiás		25 Nov 2015
Brooks, R.R.	668	1990-06-26	<a href="#">UFG 12967</a>	Myrtaceae	<del>SP</del> <i>Myrcia</i>	<i>mutabilis</i>	Proença, C.	1992	Goiás	Barro Alto	08 Dec 2017
Brooks, R.R.; Reeves, R.D.	669	1990-06-26	<a href="#">E E00281829</a>	Boraginaceae	<del>SP</del> <i>Heliotropium</i>	<i>salicoides</i>					23 Feb 2015
Brooks, R.R. & Reeves, R.D.	669	1990-06-26	<a href="#">SJRJ 31701</a>	Boraginaceae	<del>SP</del> <i>Euploca</i>	<i>salicoides</i>			Goiás	Barro Alto	25 Jun 2018
Brooks, R.R.; Reeves, R.D.	670	1990-06-26	<a href="#">E E00281828</a>	Convolvulaceae	<del>SP</del> <i>Cuscuta</i>	<i>filiformis</i>					23 Feb 2015
Brooks, R.R.; Reeve, R.D.	670	1990-06-26	<a href="#">UFG 12969</a>	Lauraceae	<del>SP</del> <i>Cassytha</i>	<i>filiformis</i>	Bucci, F.	1993-09-29	Goiás	Barro Alto	08 Dec 2017
Brooks, R.R.; Reeves, R.D.	682	1990-06-26	<a href="#">E E00295975</a>	Myrtaceae	<del>SP</del> Unk. Myrtaceae						23 Feb 2015



Brooks, R.R.; Reeves, R.D.	665	1990-06-26	E E00295977	Myrtaceae	<SP> Unk.Myrtaceae						23 Feb 2015
Brooks, R.R.	665	1990-06-26	UFG 12964	Myrtaceae	<SP> Eugenia	piloensis	Proença, C.	1992	Goíás	Barro Alto	08 Dec 2017
Brooks, R.R.; Reeves, R.D.	668	1990-06-26	E E00295976	Myrtaceae	<SP> Unk.Myrtaceae						23 Feb 2015
R.R. Brooks; R. D. Reeves	668	1990-06-26	ASU-Plants 55230	Myrtaceae	<SP> Myrcia	guianensis	Holst, 1999		Goías		25 Nov 2015
Brooks, R.R.	668	1990-06-26	UFG 12967	Myrtaceae	<SP> Myrcia	mutabilis	Proença, C.	1992	Goíás	Barro Alto	08 Dec 2017
Brooks, R.R.; Reeves, R.D.	669	1990-06-26	E E00281829	Boraginaceae	<SP> Heliotropium	salicoides					23 Feb 2015
Brooks, R.R. & Reeves, R.D.	669	1990-06-26	SJRP 31701	Boraginaceae	<SP> Euploca	salicoides			Goíás	Barro Alto	25 Jun 2018
Brooks, R.R.; Reeves, R.D.	670	1990-06-26	E E00281828	Convolvulaceae	<SP> Cuscuta	filiformis					23 Feb 2015
Brooks, R.R.; Reeve, R.D.	670	1990-06-26	UFG 12969	Lauraceae	<SP> Cassytha	filiformis	Bucci, F.	1993-09-29	Goíás	Barro Alto	08 Dec 2017
Brooks, R.R.; Reeves, R.D.	682	1990-06-26	E E00295975	Myrtaceae	<SP> Unk.Myrtaceae						23 Feb 2015



Royal Botanic Garden Edinburgh



herbaria@home  
recording historical biodiversity



Herbaria@home  
Home and status  
Message board  
Wiki

Links  
HerbarialUnited  
Online databases  
Herbaria-related  
Maps & gazetteers

Search  
Specimens  
Botanical  
Taxon names  
VCCDC match



Search herbarium specimens

Search for herbaria records from the @home project and also those uploaded to [herbariaUnited](#).  
Queries may be run using any combination of taxon, collector, collection date or locality. Please leave blank any search fields that do not apply.

Search form with fields for taxon, locality, collector, date, institution, and collection. Includes a search button and a 'previous searches' dropdown.

Search results | Search help | Maps and reports

Search results: herbarium specimens  
Results 1 to 43 of 5036

taxon	locality	collectors	date	institution
Alisma gramineum	GB, VC17 Worcestershire, Droitwich	Ursula Katherine Duncan	20/1960	E
Alisma gramineum	GB, VCS3 South Lincolnshire, Seaforth	Job Edward Lousley, Job Edward Lousley	05/1955	E
Alisma lanceolatum	GB, VC5 South Somerset, Ilminster	Edward Shearburn Marshall	25/6/1914	E
Alisma lanceolatum	GB, VC12 North Hampshire, Fleet Pond	Ursula Katherine Duncan		
Alisma lanceolatum	GB, VC13 West Sussex, Birtwinstoke	Edward Shearburn Marshall, James Herbert Augustus Jessner		
Alisma lanceolatum	GB, VC14 East Sussex, Lewes	James Herbert Augustus Jessner, Botanical Exchange C		
Alisma lanceolatum	GB, VC11 East Sussex, Lewes	James Herbert Augustus Jessner, The British Isles		
Alisma lanceolatum	GB, VC17 Surrey, Dorkwood	James Sinclair		
Alisma lanceolatum	GB, VC17 Surrey, Dorkwood	Job Edward Lousley		
Alisma lanceolatum	GB, VC17 Surrey, Rhymneyde	F. Scaughel		



white slip of

A series of taxonomic cards for various plant families, each with a small image and statistics:

- Australian Myrtaceae**: 100% Vascular, 100% Terrestrial, 3464 taxa
- Labiatae of Australia**: 100% Vascular, 100% Terrestrial, 701 taxa
- Stylidiaceae of Australia**: 100% Vascular, 100% Terrestrial, 525 taxa
- Umbelliferae of Australia**: 100% Vascular, 100% Terrestrial, 923 taxa
- Droseraceae of Australia**: 100% Vascular, 100% Terrestrial, 553 taxa
- Ericaceae of Australia**: 100% Vascular, 100% Terrestrial, 1778 taxa
- Proteaceae of Australia**: 100% Vascular, 100% Terrestrial, 1081 taxa
- Orchidaceae of Australia**: 100% Vascular, 100% Terrestrial, 1081 taxa

Herbaria EXPEDITIONS FOR HERBARIA

- ICEDIG glimpse on the diversity of European collections
- Dr. T's Fantastic Collection: 2nd Expedition
- WeDig! Plants! Waterlilies, Black Mangroves, and Relatives of Florida
- Treasures of a Small Georgia

Herbaria@home interface showing a specimen image, a world map, and a 'Check out your premiere mission' section with progress bars for 'Moulin Sargasson (St. Cyrillien)' at 10% and 'Les palmiers de Aube' at 3%.





Family: Proteaceae

Select this record for download

***Banksia littoralis* R.Br.**

[Name details >>](#)

Filing region: Australia

Country of origin: Australia

Barcode: E00698529

Cite as: <http://data.rbge.org.uk/herb/E00698529>

Label data partially captured

[Full specimen details >>](#)

OCR:

[OCR details >>](#)

DigiVol Label transcriptions: has no matches

[DigiVol Label transcriptions details >>](#)

DigiVol Label transcriptions: has no matches

[DigiVol Label transcriptions details >>](#)



Family: Proteaceae

Select this record for download

***Banksia littoralis* R.Br.**

[Name details >>](#)

Filing region: Australia

Country of origin: Australia

Barcode: E00698530

Cite as: <http://data.rbge.org.uk/herb/E00698530>

Label data partially captured

[Full specimen details >>](#)

OCR:

[OCR details >>](#)

DigiVol Label transcriptions: has no matches

[DigiVol Label transcriptions details >>](#)

DigiVol Label transcriptions: has no matches

[DigiVol Label transcriptions details >>](#)





### DigiVol Label transcriptions text matching

: Proteaceae  
Transcribed name: *Banksia littoralis* R.Br.  
Collection number: s.n.  
Collector: Morrison, Alexander (Dr.)  
Collection date: 1897-06-05  
Country of origin: Australia  
Transcription URL: <https://volunteer.ala.org.au/validate/task/21396358>  
Western Australia

[Return to previous results page](#)



**DIGIVOL** Proteaceae of Australia E00698529.jpg  
Catalog Number E00698529

Skip Create Forum Topic View Tutorial



Catalogue No.: E00698529  
Taxa: Banksia littoralis R.Br.

Copy from previous task

1. Museum details

Shrink

Genus	<input type="text" value="Banksia"/>	?
Species	<input type="text" value="littoralis"/>	?
Species Author	<input type="text" value="R.Br."/>	?
Infraspecific Rank	<input type="text"/>	?
Infraspecific Epithet	<input type="text"/>	?
Infraspecific Author	<input type="text" value="R.Br."/>	?

2. Collection details

Collector(s)  ?

Collected with  ?

Collection Number  ?

Collection Date (from)    ?

(to)    ?

Date as given  ?

3. Location details

Country  ?

Country as given  ?

State/Province/Territory  ?

Locality  ?

Verbatim Latitude

D°M'S\*  ?

D  M  S

4. Notes Record any comments here that may assist in validating this task

Shrink

Transcriber Notes

Validator Notes

Mark as Valid Mark as Invalid Skip Create Forum Topic

Transcribed by Erna van Zyl on 2017-11-09 15:36:22





Collection management system

Export from CMS into a useable Database

Control file

Data



Collection management system

~~Export from CMS into a useable Database~~

Control file

Data



MySQL Workbench

BGBASE DUMP x

File Edit View Query Database Server Tools Scripting Help

Navigator: digivol2 fields x

SCHEMAS

Filter objects

citizen\_science

- Tables
  - datasources
    - Columns
    - Indexes
    - Foreign Keys
    - Triggers
  - digivol2
    - Columns
    - Indexes
    - Foreign Keys
    - Triggers
  - fields
    - Columns
    - Indexes
    - Foreign Keys
    - Triggers
  - herbathome
  - imports
  - records
- Views

Management Schemas

Information

Table: fields

Columns:

- id int(11) AI PK
- name varchar(255)
- datatype varchar(45)
- label varchar(255)
- datasource varchar(255)
- outputposition int(11)
- isbarcode tinyint(4)
- datasourceid int(11)

Object Info Session

```
SELECT * FROM citizen_science.fields;
```

Result Grid

	id	name	datatype	label	datasource	outputposition	isbarcode	datasourceid	subposition	fieldid
1	taskID	int	NULL		Diaivol2	NULL	NULL	1	NULL	1
2	taskURL	text	Transcription URL		Diaivol2	14	NULL	1	1	2
3	validationStatus	text	NULL		Diaivol2	NULL	NULL	1	NULL	3
4	transcriberID	text	NULL		Diaivol2	NULL	NULL	1	NULL	4
5	validatorID	text	NULL		Diaivol2	NULL	NULL	1	NULL	5
6	externalIdentifier	text	NULL		Diaivol2	NULL	NULL	1	NULL	6
7	exportComment	text	NULL		Diaivol2	NULL	NULL	1	NULL	7
8	dateTranscribed	text	NULL		Diaivol2	NULL	NULL	1	NULL	8
9	dateValidated	text	NULL		Diaivol2	NULL	NULL	1	NULL	9
10	basisOfRecord	text	NULL		Diaivol2	NULL	NULL	1	NULL	10
11	catalogNumber	text	Barcode		Diaivol2	12	1	1	1	11
12	coordinateUncer...	text	NULL		Diaivol2	NULL	NULL	1	NULL	12
13	country	text	Country of origin		Diaivol2	7	NULL	1	1	13
14	dav	text	Collection date		Diaivol2	6	NULL	1	1	14
15	decimalLatitude	text	NULL		Diaivol2	NULL	NULL	1	NULL	15





MySQL Workbench

BGBASE DUMP x

File Edit View Query Database Server Tools Scripting Help

Navigator digivol2 x

SCHEMAS

Filter objects

citizen\_science

Tables

datasources

Columns

Indexes

Foreign Keys

Triggers

digivol2

Columns

Indexes

Foreign Keys

Triggers

fields

Columns

Indexes

Foreign Keys

Triggers

herbathome

imports

records

Views

Management Schemas

Information

Table: digivol2

Columns:

taskID

taskURL

validationStatus

transcriberID

validatorID

externalIdentifier

Result Grid

Filter Rows: Edit: Export/Import: Wrap Cell Content: Fetch rows:

taskID	taskURL	validationStatus	transcriberID	validatorID	externalIdentifier	exportComment	dateTranscribed	dateValidated	bas
21383673	https://volunteer.ala.oro.au/validate/task/213...	Valid	Erna van Zvl	Matthew Fellion	E00077798.100	Fully transcribed by Erna van Zvl. Exoorted on ...	2017-11-09 20:59:00	2017-11-12 10:42:00	
21383677	https://volunteer.ala.oro.au/validate/task/213...		Grahame Parsons		E00092440.100	Fully transcribed by Grahame Parsons. Exoorte...	2017-11-10 18:47:00		
21383681	https://volunteer.ala.oro.au/validate/task/213...		Erna van Zvl		E00103013.100	Fully transcribed by Erna van Zvl. Exoorted on ...	2017-11-09 21:20:00		
21383685	https://volunteer.ala.oro.au/validate/task/213...	Valid	Erna van Zvl	Matthew Fellion	E00103014.100	Fully transcribed by Erna van Zvl. Exoorted on ...	2017-11-09 21:01:00	2017-11-12 09:49:00	
21383689	https://volunteer.ala.oro.au/validate/task/213...		Erna van Zvl		E00103015.100	Fully transcribed by Erna van Zvl. Exoorted on ...	2017-11-09 21:02:00		
21383693	https://volunteer.ala.oro.au/validate/task/213...		Erna van Zvl		E00103016.100	Fully transcribed by Erna van Zvl. Exoorted on ...	2017-11-09 21:03:00		
21383697	https://volunteer.ala.oro.au/validate/task/213...		Erna van Zvl		E00103017.100	Fully transcribed by Erna van Zvl. Exoorted on ...	2017-11-09 21:08:00		
21383701	https://volunteer.ala.oro.au/validate/task/213...		Erna van Zvl		E00103018.100	Fully transcribed by Erna van Zvl. Exoorted on ...	2017-11-09 21:09:00		
21383705	https://volunteer.ala.oro.au/validate/task/213...		Erna van Zvl		E00103019.100	Fully transcribed by Erna van Zvl. Exoorted on ...	2017-11-09 21:20:00		
21383709	https://volunteer.ala.oro.au/validate/task/213...		Erna van Zvl		E00103020.100	Fully transcribed by Erna van Zvl. Exoorted on ...	2017-11-09 21:22:00		
21383713	https://volunteer.ala.oro.au/validate/task/213...		Erna van Zvl		E00103021.100	Fully transcribed by Erna van Zvl. Exoorted on ...	2017-11-09 21:23:00		
21383717	https://volunteer.ala.oro.au/validate/task/213...		Erna van Zvl		E00103022.100	Fully transcribed by Erna van Zvl. Exoorted on ...	2017-11-09 21:25:00		
21383721	https://volunteer.ala.oro.au/validate/task/213...		Erna van Zvl		E00103023.100	Fully transcribed by Erna van Zvl. Exoorted on ...	2017-11-09 21:25:00		
21383768	https://volunteer.ala.oro.au/validate/task/213...		Erna van Zvl		E00103024.100	Fully transcribed by Erna van Zvl. Exoorted on ...	2017-11-09 21:30:00		

Object Info Session digivol2 1 x

Apply Revert



# RBGE citizen science data upload

Record 1 of 2 ⏪ ⏴ ⏵ ⏩ ⚙️ ✕

Digivol2 Close Save

Datasource name: Digivol2 Datasource tab label: Digivol Label transcriptions Help

[Add another field](#)

✕	Field name:	taskID	Datatype:	INTEGER	Barcode field:	<input type="checkbox"/>
✕	Field name:	taskURL	Datatype:	TEXT	Barcode field:	<input type="checkbox"/>
✕	Field name:	validationStatus	Datatype:	TEXT	Barcode field:	<input type="checkbox"/>
✕	Field name:	transcriberID	Datatype:	TEXT	Barcode field:	<input type="checkbox"/>
✕	Field name:	validatorID	Datatype:	TEXT	Barcode field:	<input type="checkbox"/>
✕	Field name:	externalIdentifier	Datatype:	TEXT	Barcode field:	<input type="checkbox"/>
✕	Field name:	exportComment	Datatype:	TEXT	Barcode field:	<input type="checkbox"/>
✕	Field name:	dateTranscribed	Datatype:	TEXT	Barcode field:	<input type="checkbox"/>
✕	Field name:	dateValidated	Datatype:	TEXT	Barcode field:	<input type="checkbox"/>
✕	Field name:	basisOfRecord	Datatype:	TEXT	Barcode field:	<input type="checkbox"/>
✕	Field name:	catalogNumber	Datatype:	TEXT	Barcode field:	<input checked="" type="checkbox"/>
✕	Field name:	coordinateUncertaintyInMeters	Datatype:	TEXT	Barcode field:	<input type="checkbox"/>
✕	Field name:	country	Datatype:	TEXT	Barcode field:	<input type="checkbox"/>
✕	Field name:	day	Datatype:	TEXT	Barcode field:	<input type="checkbox"/>
✕	Field name:	decimalLatitude	Datatype:	TEXT	Barcode field:	<input type="checkbox"/>
✕	Field name:	decimalLongitude	Datatype:	TEXT	Barcode field:	<input type="checkbox"/>
✕	Field name:	establishmentMeans	Datatype:	TEXT	Barcode field:	<input type="checkbox"/>
✕	Field name:	eventDate	Datatype:	TEXT	Barcode field:	<input type="checkbox"/>
✕	Field name:	eventID	Datatype:	TEXT	Barcode field:	<input type="checkbox"/>
✕	Field name:	specimenID	Datatype:	TEXT	Barcode field:	<input type="checkbox"/>



# RBGE citizen science data upload

Record 1 of 2 ⏪ ⏩ ⏴ ⏵ ⚙️ ✖

Digivol2 Close

[Add a new output group](#) [Help](#)

**Output group 1**  
Output group label   
**Fields in this group**  
scientificName

---

**Output group 2**  
Output group label   
**Fields in this group**  
family

---

**Output group 3**  
Output group label   
**Fields in this group**  
recordedBy\_0

---

**Output group 4**  
Output group label   
**Fields in this group**  
recordedBy\_1  
recordedBy\_2  
recordedBy\_3

---

**Output group 5**  
Output group label   
**Fields in this group**  
recordNumber

**Unused fields**

- basisOfRecord
- coordinateUncertaintyInMeters
- dateTranscribed
- dateValidated
- decimalLatitude
- decimalLongitude
- establishmentMeans
- eventID
- exportComment
- externalIdentifier
- genus
- infraspecificEpithet
- locationID
- occurrenceRemarks
- recordedByID\_0
- recordedByID\_1
- recordedByID\_2
- recordedByID\_3
- samplingProtocol
- scientificNameAuthorship
- specificEpithet
- taskID
- taxonRank
- transcriberID
- transcriberNotes
- validationStatus
- validatorID
- validatorNotes
- verbatimElevation
- verbatimLocality



Royal  
Botanic Garden  
Edinburgh



Royal  
Botanic Garden  
Edinburgh

# RBGE citizen science data upload

## Main menu

- Upload new data files
- Add and configure data sources
- Arrange data source fields for display
- Logout



Royal  
Botanic Garden  
Edinburgh



Royal  
Botanic Garden  
Edinburgh

# RBGE citizen science data upload

Citizen science data importer ✕

[Close](#)

Upload a new csv file

Select a csv file to import

No file selected.

Select the data source type of the selected csv file

Digivol2



Fri 13/04/2018 11:51

Sally King

Thank you for taking part in our Digivol Goodeniaceae of Australia expedition!

Goodeniaceae Expedition Volunteers,

Thank you for taking part in our Digivol Goodeniaceae of Australia expedition which was completed in 15 days by 13 volunteers!

Here's some things that your transcriptions have unlocked so far from within our Australian Goodeniaceae collection...

Collection time span of 203 years (1799 – 2002)!

Top Five Collectors collected 43% of all specimens in the Australian Goodeniaceae collection

Collector	Top states (date range) collected in
Smith, Robert	1801 – 1805 New South Wales, Queensland & Western Australia
Wilson, Alexander (Dr.)	1886 -1900 Victoria, 1898-1902 Western Australia
Wright, J	1905 & 1908 Western Australia, 1908 & 1911 Queensland
Young, Max	1899 –1901 South Australia, 1904 -1910 Western Australia
Zimmerman, Ernst Georg	1900 – 1901 Western Australia

Transcription Outcomes



Fri 13/04/2018 11:51

Sally King

Thank you for taking part in our Digivol Goodeniaceae of Australia expedition!

# ration Outcomes

highlighted 2 specimens as cultivated  
of these:

been verified as cultivated.

specimen requires an additional barcode

5437 has three specimens and only two barcodes

## bert Brown specimens

it to see via the Notes field section that people are using the Robert Brown website recommended our Digivol Manual (attached to this email). We would ask that information that is not written physically on the specimen but is present on the website is entered only in the transcriber comments field. This is because for this particular collector the number present on the blue collection labels, officially known as a Bennett number relates to a species name not an individual collection event.

me interesting issues highlighted by you





Fri 13/04/2018 11:51

Sally King

Thank you for taking part in our Digivol Goodeniaceae of Australia expedition!

[Anthotium humile](#) does not occur in this part of Western Australia, but specimen appears to be [Anthotium junciforme](#) (de Vriese) D.A.Morrison. It is known from the region and from historical collections from Midland Junction. - E00804656"

Thank you for highlighting this specimen, we will investigate the species identification further.

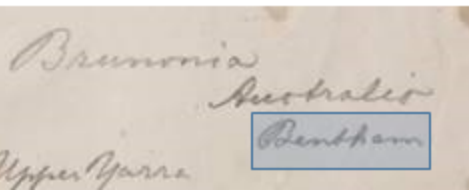
Not sure what "Bentham" refers to?

A species name is made up of two words, the genus and the specific epithet, which together form the Linnean binomial.

The genus is always italicised and starts with a small letter, never a capital. It is followed by the authority string. This is the person(s) who published the species name and the authority string. Authors should follow the standard abbreviated forms found in the International Plant Names Index (IPNI) which is based on Brummitt and Powell's *Authoritative Plant Names* (1992).

- E.g. ***Swietenia macrophylla* King**
- Meliaceae** = family
- Swietenia*** = genus
- macrophylla*** = specific epithet
- Swietenia macrophylla*** = species name
- King = author

The name in the example below is the author string but has not been abbreviated as this was collected 112 years prior to the introduction of the standard abbreviated form. For Bentham the standard abbreviation is "Benth."





Fri 13/04/2018 11:51

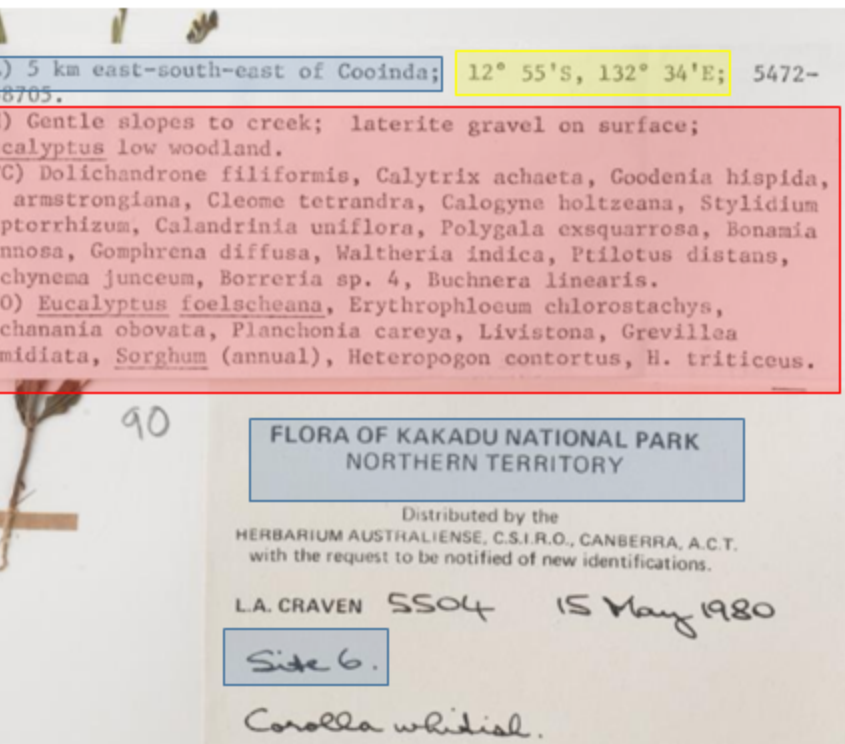
Sally King

Thank you for taking part in our Digivol Goodeniaceae of Australia expedition!

red location also [Flora of Kakadu National Park, Northern Territory]

NOT transcribed the items marked (TO) and (TC)

is specimen I have indicated the locality information in blue, the georeferencing (Latitude and longitude) information in yellow and the habitat information in red. The information in red should be entered into the habitat field as these will be the other species that coexist with the specimen collected.



5 km east-south-east of Cooida; 12° 55'S, 132° 34'E; 5472-8703.

Gentle slopes to creek; laterite gravel on surface; *Eucalyptus* low woodland.

(C) *Dolichandrone filiformis*, *Calytrix achaeta*, *Goodenia hispida*, *armstrongiana*, *Cleome tetrandra*, *Calogyne holtzeana*, *Stylidium pterorhizum*, *Calandrinia uniflora*, *Polygala exsuarrosa*, *Bonamia nnoza*, *Gomphrena diffusa*, *Waltheria indica*, *Ptilotus distans*, *chynema junceum*, *Borreria* sp. 4, *Buchnera linearis*.

(O) *Eucalyptus foelscheana*, *Erythrophloeum chlorostachys*, *chanania obovata*, *Planchonia careya*, *Livistona*, *Grevillea midiata*, *Sorghum* (annual), *Heteropogon contortus*, *H. triticeus*.

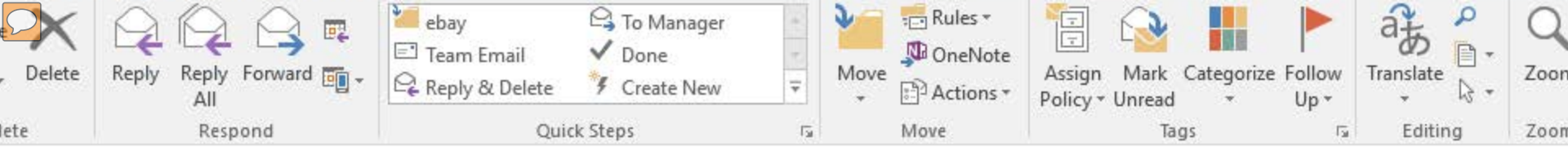
FLORA OF KAKADU NATIONAL PARK  
NORTHERN TERRITORY

Distributed by the  
HERBARIUM AUSTRALIENSE, C.S.I.R.O., CANBERRA, A.C.T.  
with the request to be notified of new identifications.

L.A. CRAVEN 5504 15 May 1980

Side 6.

Corolla whitish.



Fri 13/04/2018 11:51

Sally King

Thank you for taking part in our Digivol Goodeniaceae of Australia expedition!

ning of *B diprofia*?"

Actually '*β depressa*' – Bennett's handwriting is pretty difficult to make out! '*β depressa*' forms part of the species name: *Scaevola microcarpa β depressa*. Greek  $\alpha$ ,  $\beta$ , &  $\gamma$  etc. were used in the 1700's and 1800's to denote varieties found within a species.



Robert Brown specimen with '*Beta depressa*' as part of the species name



Fri 13/04/2018 11:51

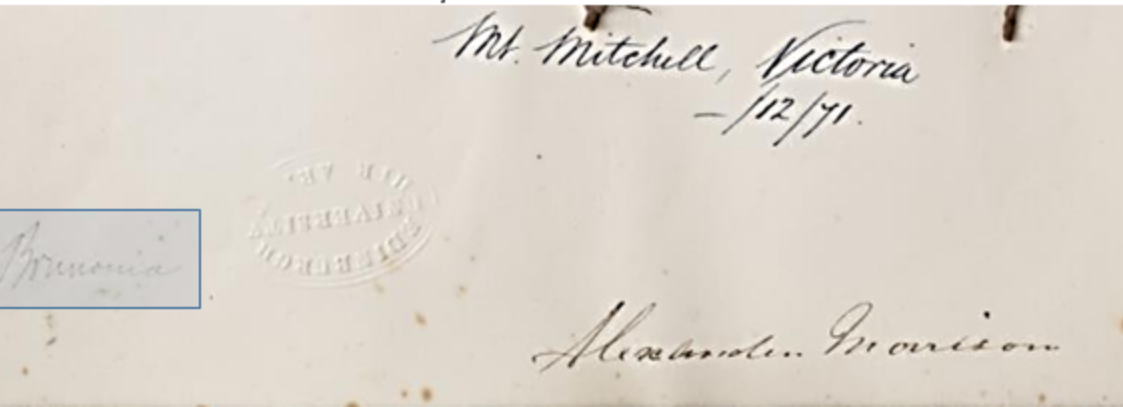
Sally King

Thank you for taking part in our Digivol Goodeniaceae of Australia expedition!

Robert Brown specimen with 'Beta depressa' as part of the species name

onia would have been written on later either by a taxonomist or a curator and is therefore not the original label name"

as a correct assumption, this would have been added later on by a curator or botanist and therefore is not the original label name and thus would not be added into the museum detail section of the data entry form.



Specimen with additional information "Brunonia" added to the specimen that it not part of the collection label information

re whether to put genus as 'Velleya' (as written), or as 'Velleia', as spelt on the IPNI.

use the correct spelling as given in IPNI (see RBGE Digivol Tutorial) when the spelling of a name differs on the physical specimen to the spelling present in IPNI.

Finally...



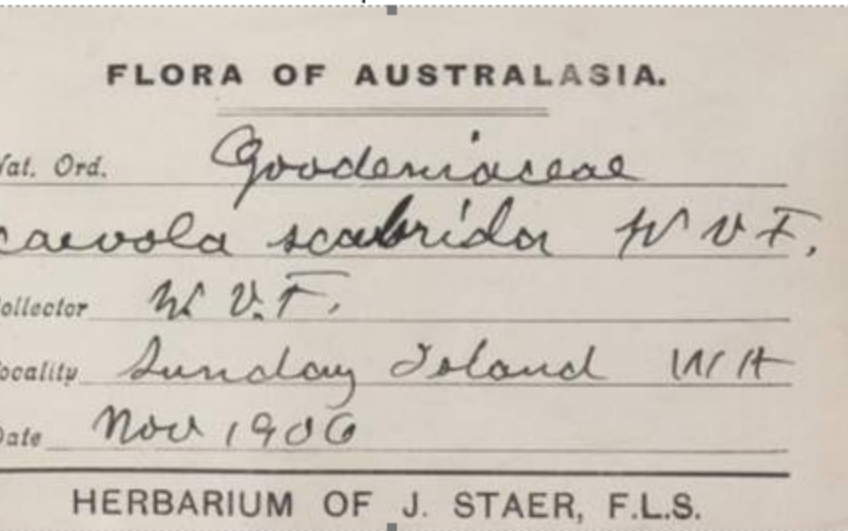
Fri 13/04/2018 11:51

Sally King

Thank you for taking part in our Digivol Goodeniaceae of Australia expedition!

Finally...

Shout out to the volunteer that deciphered collector initials 'W.V.F.' as William Vincent Fitzgerald!



Specimen label with collector W.V.F.

This is only the beginning....

Our bioinformatics team is refining a system that will display your data in our online catalogue [data.rbge.org.uk/herb](http://data.rbge.org.uk/herb)

The catalogue is open to everyone to access and download our specimen record data and images for free.

Thank you so much for your help with this project, we would love you to get involved in our current and future expeditions!



## Robyn Drinkwater

*Digitisation Officer/Technical Developer*



My favourite things in the Herbarium are the barcodes, in particular the long empty strip you get when doing minimal data entry. It's satisfying to see (and rip off) at the end of a day's databasing. Each long empty strip shows that several hundred more specimens are ready to be imaged and made available online. Currently around 750,000 (25%) of specimens have been databased.

## Sally King

*Digitisation Officer/Herbarium Volunteer Coordinator*



Choosing a favourite thing from the Herbarium was impossible because it's such a treasure trove! I chose a sentimental object, my wee Mexican tortoise, a gift from a digitisation team member at Kew Herbarium, where I used to work. He puts a smile on my face and reminds me of where I've come from. Without my time at Kew I wouldn't be working here. I'm so happy to be working at the best Botanic Garden in the UK ;- ) The world map in the photo is marked out into the geographical regions the herbarium specimens are filed under:

Mexico is in Area 14.

## Elspeith Haston

*Deputy Herbarium Curator*



My favourite thing in the Herbarium is Grumpy, a herbarium trolley that saw a lot of service in 2006 when we reorganised the three million specimens in the collection. It took us nine weeks, thanks to a team of people and a set of seven trolleys. When moving specimens from one cabinet to another between two floors, the characters of the trolleys became evident and so we named them. Happy was the favourite - running smoothly and turning nicely. Grumpy needed more effort to manoeuvre, but I grew very fond of it! The RGBE Herbarium

was the first large herbarium to be organised according to the Angiosperm Phylogeny Group classification, a system now adopted by many other large herbaria. Grumpy is still in the herbarium, helping us to recurate some of the larger families.