



Inselect

Lawrence Hudson & Ben Price
Natural History Museum, London



Acknowledgements

- Prototype and segmentation: Pieter Holtzhausen, Stéfan van der Walt
- Direction: Laurence Livermore, Vladimir Blagoderov, Vincent Smith
- Initial app development: Alice Heaton
- Testing: Louise Allan, Natalie Dale-Skey, Slide Project volunteers

Support from:

- SYNTHESYS European Community Research Infrastructure Action under the FP7 Integrating Activities Programme (Grant agreement number 312253)
- The U.K. Natural Environment Research Council





Photo by DAVID ILIFF. License: CC-BY-SA 3.0



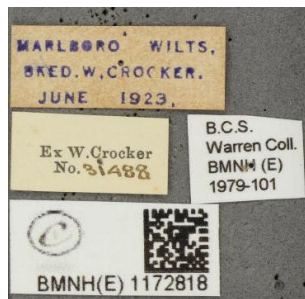
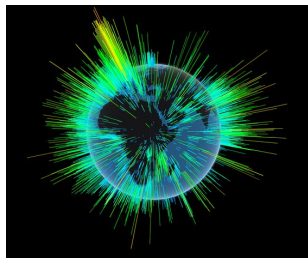
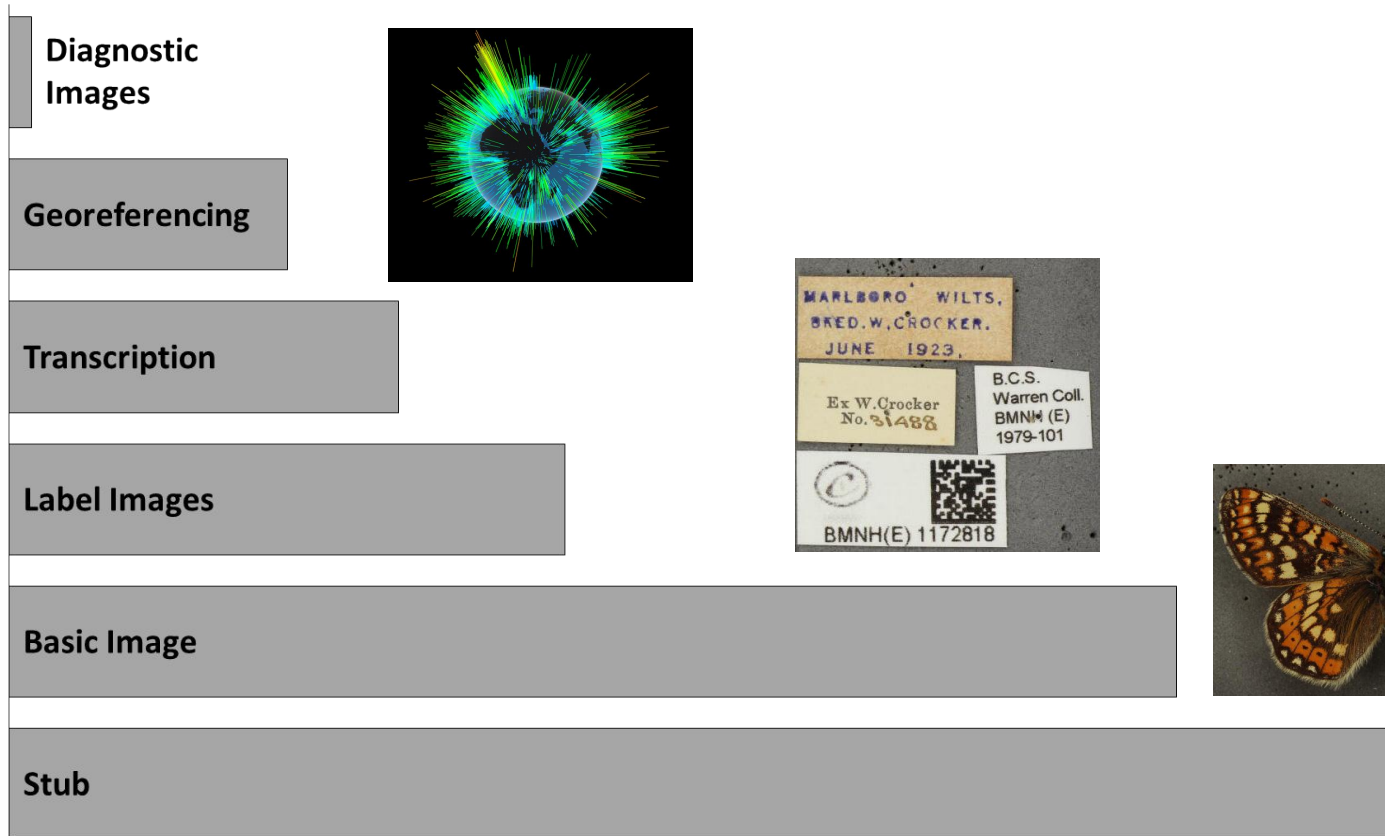
NHM collection:

- 80 million objects
- 1.2 million types
- 4% online





Levels of digitisation



**What
Where
UID**

Specimens per unit effort

iCollections

Diagnostic
Images

Georeferencing

Transcription

Label Images

Basic Image

Stub

Specimens per unit effort



Whole Drawer Imaging

Diagnostic
Images

Georeferencing

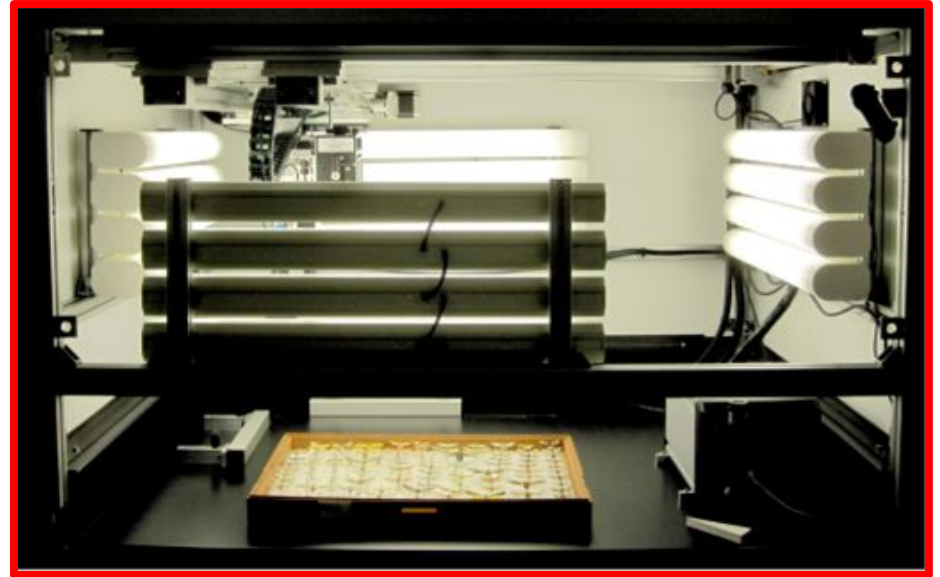
Transcription

Label Images

Basic Image

Stub

Specimens per unit effort



Pinned Insect Drawers

File Edit View Help

Open Save Segment image Subsegment box Read barcodes Zoom In Zoom Out Choose ... 84 boxes 1 selected Select by size

Boxes Objects

Odonata v1

Catalog number 010213339

Location Drawer 36

Taxonomy Enallagma cyathigerum

Information

Pinned Insect Drawers

The image shows a software interface for managing insect drawers. The main window displays two drawers filled with pinned insects, each with a grid of small images. A red box highlights the top toolbar, which includes a 'Plugins' button and a status bar showing '84 boxes 1 selected'. Another red box highlights the central image area, which is overlaid with the text 'Segmentation & Refining'. A third red box highlights the right-hand panel, which is titled 'Odonata v1' and contains a metadata form with fields for 'Catalog number' (010213339), 'Location' (Drawer 36), and 'Taxonomy' (Enallagma cyathigerum). The bottom of the interface has an 'Information' tab.

Plugins

84 boxes 1 selected

Select by size

Segmentation & Refining

Odonata v1

Catalog number: 010213339

Location: Drawer 36

Taxonomy: Enallagma cyathigerum

Information

Pinned Insect Drawers

The image shows a software interface for managing insect drawers. The main window displays a grid of nine drawers, each with a unique ID and a photograph of the insect. The drawers are arranged in a 3x3 grid:

- 0010 010213435_
- 0011 010213362_
- 0012 010213421_
- 0013 010213335_
- 0014 010213428_
- 0015 010213350_
- 0016 010213339_
- 0017 010213341_
- 0018 010213330_

Each drawer image includes a QR code and a small label with handwritten text. The interface also features a menu bar (File, Edit, View, Help), a toolbar with icons for Open, Save, Segment image, Subsegment box, Read barcodes, Zoom In, and Zoom Out, and a status bar showing '84 boxes 0 selected' and a 'Select by size' slider.

A red-bordered panel on the right side of the interface is highlighted and labeled 'Metadata'. This panel contains the following fields:

- A dropdown menu at the top set to 'Coccoidea v4'.
- A text input field for 'Catalog number'.
- A dropdown menu for 'Location'.
- A dropdown menu for 'Taxonomy'.

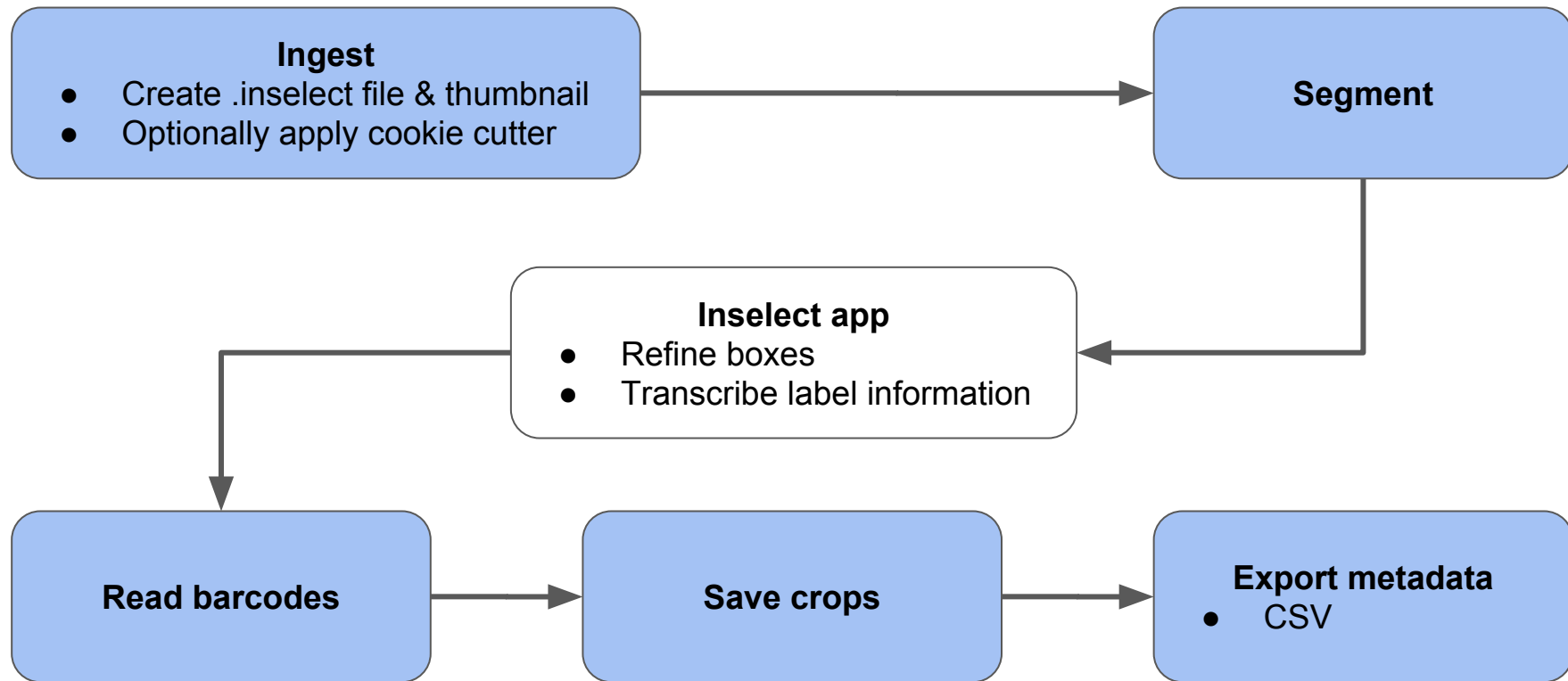
At the bottom of the interface, there is an 'Information' tab.

Live Demo

1. “Insect soup” & segmentation
2. Pinned insects & user-defined metadata
3. Microscope slide templates & barcode reading
4. Cookie cutters
5. Batch-processing using command-line tools



Automated workflow



Thank-you!



<https://github.com/NaturalHistoryMuseum/inselect>

Lawrence Hudson l.hudson@nhm.ac.uk

Ben Price b.price@nhm.ac.uk