

Collection Overview

American Museum of Natural History

Division of Invertebrate Zoology

Staff:

2 Curators (Estefania Rodriguez, Mark Siddall)

1 Curatorial Associate, shared (**Christine Johnson**)

1 Museum Specialist (full-time) (**Lily Berniker**)

1 Imaging Specialist, shared (full-time)

1 Collections Assistant, shared (part-time)



Collection Overview

American Museum of Natural History

Division of Invertebrate Zoology

Infrastructure:

Buildings: 5 inter-connected buildings

Collection Storage Space:

Dry Vaults: 100 single door cabinets/cans (544 sq ft)

Dry Mollusk: 506 single door cabinets/cans (~3550 sq ft)

Fluid Space: 731 single door cabinets/cans (~3000 sq ft)

Database:

Division-wide database EMu (very powerful) on museum-wide server

Preliminary Internet availability; robust intranet capability coming soon



Fluid Storage Facility (NSB)

American Museum of Natural
History

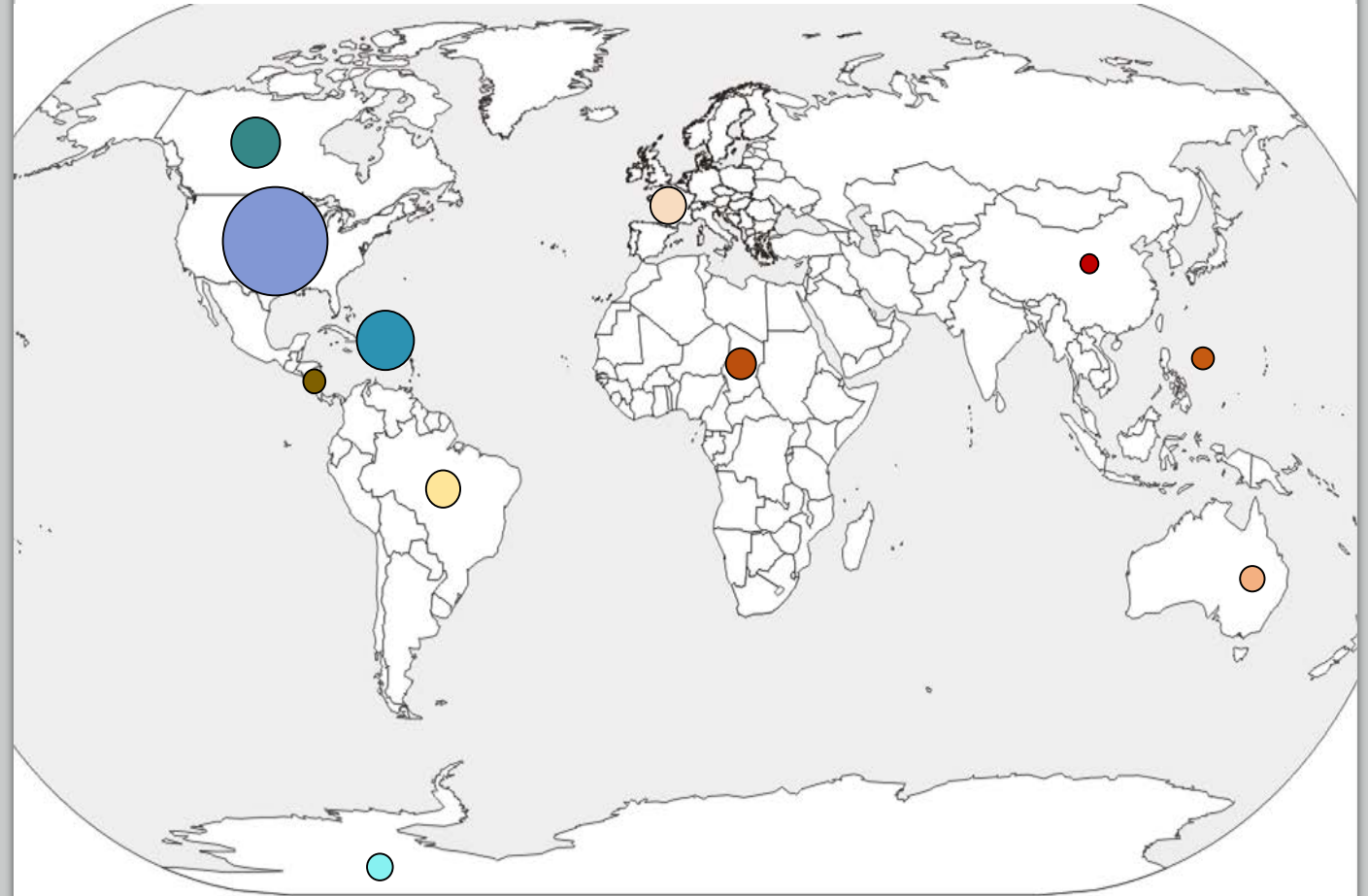
Division of Invertebrate Zoology

Strengths

Geographic:

USA	14794
Caribbean	4412
North America	3303
South America	1849
Europe	1799
Africa	1391
Australia	951
Antarctic	924
Central America	780
Southeast Asia	658
Asia	455

Relative Proportion of
Total Number of Database Records

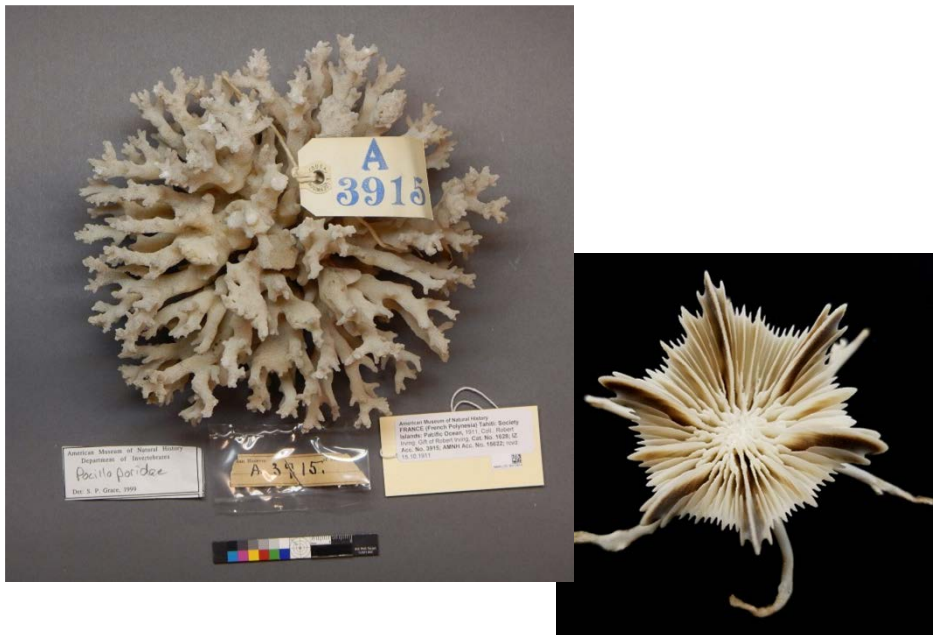


American Museum of Natural
History
Division of Invertebrate Zoology

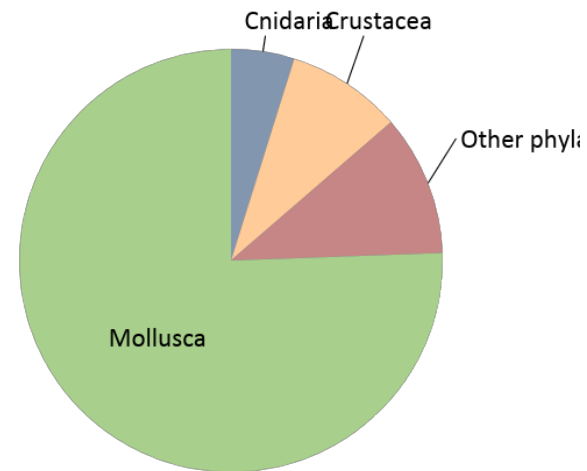
Strengths

Taxonomic:

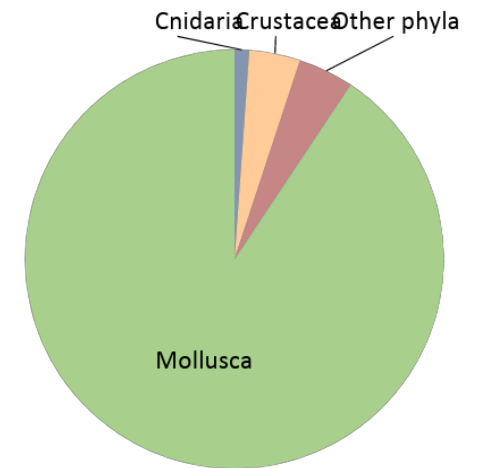
7,304 databased names
(non-mollusk)



Database Records



Total Collection Size



American Museum of Natural
History
Division of Invertebrate Zoology

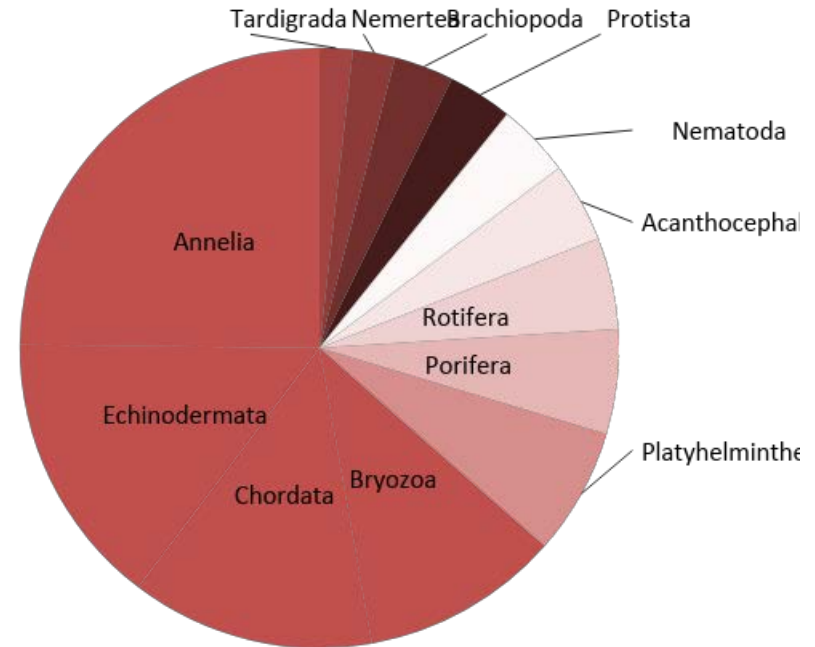
Strengths

Taxonomic:

7,304 databased names
(non-mollusk)



Other Phyla



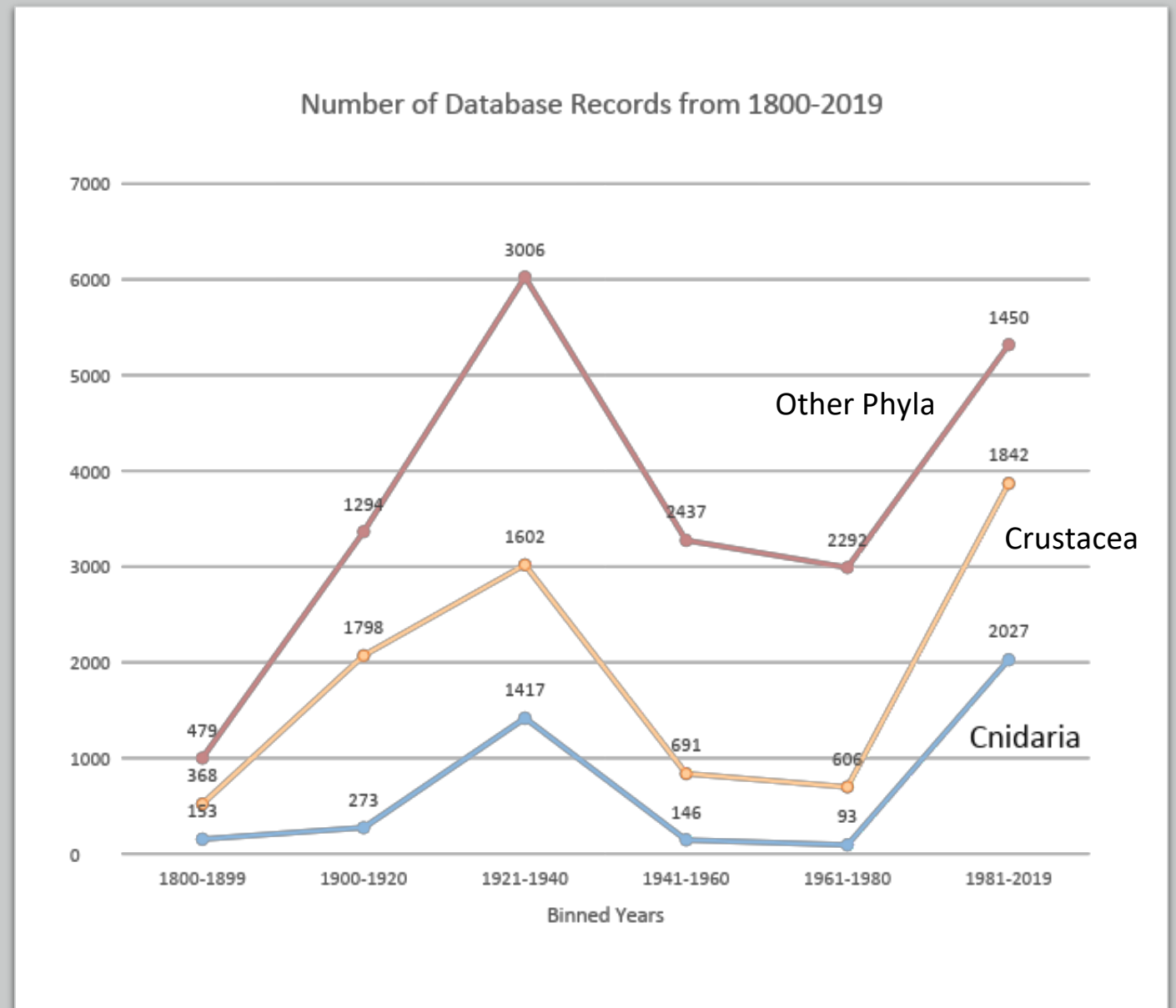
American Museum of Natural
History
Division of Invertebrate Zoology

Strengths

Collecting History:



Bryozoa Group at AMNH 1919



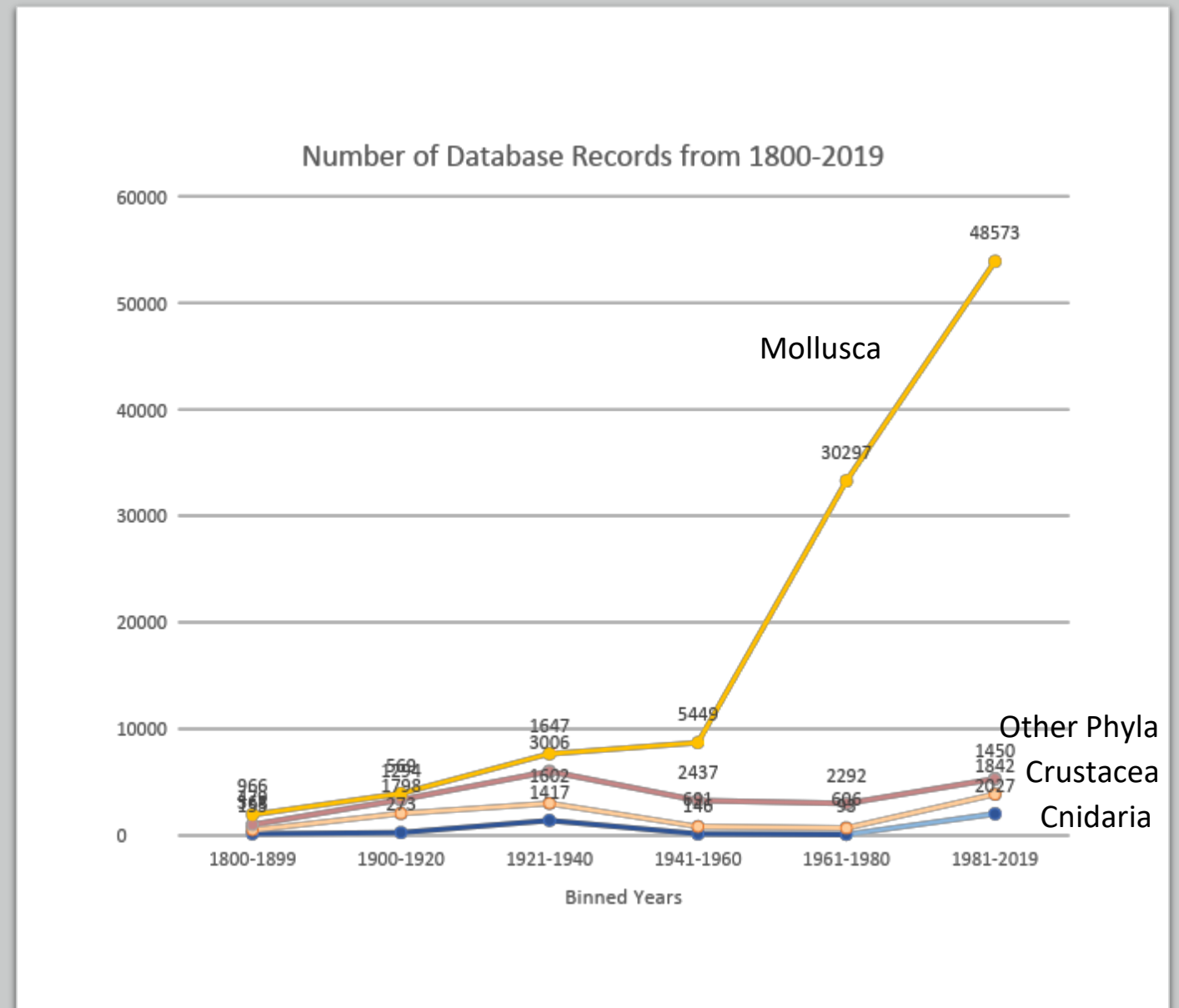
American Museum of Natural
History
Division of Invertebrate Zoology

Strengths

Collecting History:



Bryozoa Group at AMNH 1919



American Museum of Natural
History
Division of Invertebrate Zoology

Strengths

Collecting History:



Glass Radiolaria (1895-1901)

Expeditions

Vema (Atlantic)
Zaca (Eastern Pacific)
Puritan (Western Mexico)
Second Templeton Crocker (South Pacific)
Bermuda Oceanographic Expeditions

Collections

John C. Jay (Mollusca)
Stunkard (parasitic Platyhelminthes)
Hyman (Platyhelminthes)
Vanderbilt Museum
Dept. of Tropical Research, NY Zoological Society

Curators

R.P. Whitfield (Cnidaria: Scleractinia)
Roy Waldo Miner (Marine Inverts-Caribbean)
Van Name (Isopoda, Chordata)
Squires (Cnidaria: Scleractinia)
Winston (Bryozoa)
Siddall (Annelida)
Rodriguez (Cnidaria: Actiniaria)

American Museum of Natural
History
Division of Invertebrate Zoology

Digitization

Efforts & Grants:

Challenges:

Goals (5 yr):



Digitization Efforts & Grants

- ❖ **Planetary Biodiversity Inventory** (Bugs, Randall Schuh)
- ❖ **Planetary Biodiversity Inventory** (Spiders, Norm Platnick)
- ❖ **Thematic Collection Network** (Insects & Plant, R. Schuh & Chris Johnson)
- ❖ **Thematic Collection Network** (Bees, John Ascher)
- ❖ **Institute of Museum & Library Services** (Coral Rehousing & digitization, Chris Johnson)
- ❖ **Interns** digitizing sections of Mollusca (Sofia, Pat Saigo, Emily Lau, Julien Lalanne)

Challenges

- ❖ Outdated names and, thus, outdated organization
- ❖ Rehousing, while digitizing?
- ❖ Insufficient full-time assistant staff
- ❖ Lack of taxonomic expertise

Goals

- ❖ Crustacea, Cnidaria (wet), Echinoderm, Porifera, Annelida collections
- ❖ Georeference localities
- ❖ Visualize ecological communities