

Canadensys: Biodiversity Across Our Borders



@canadensys

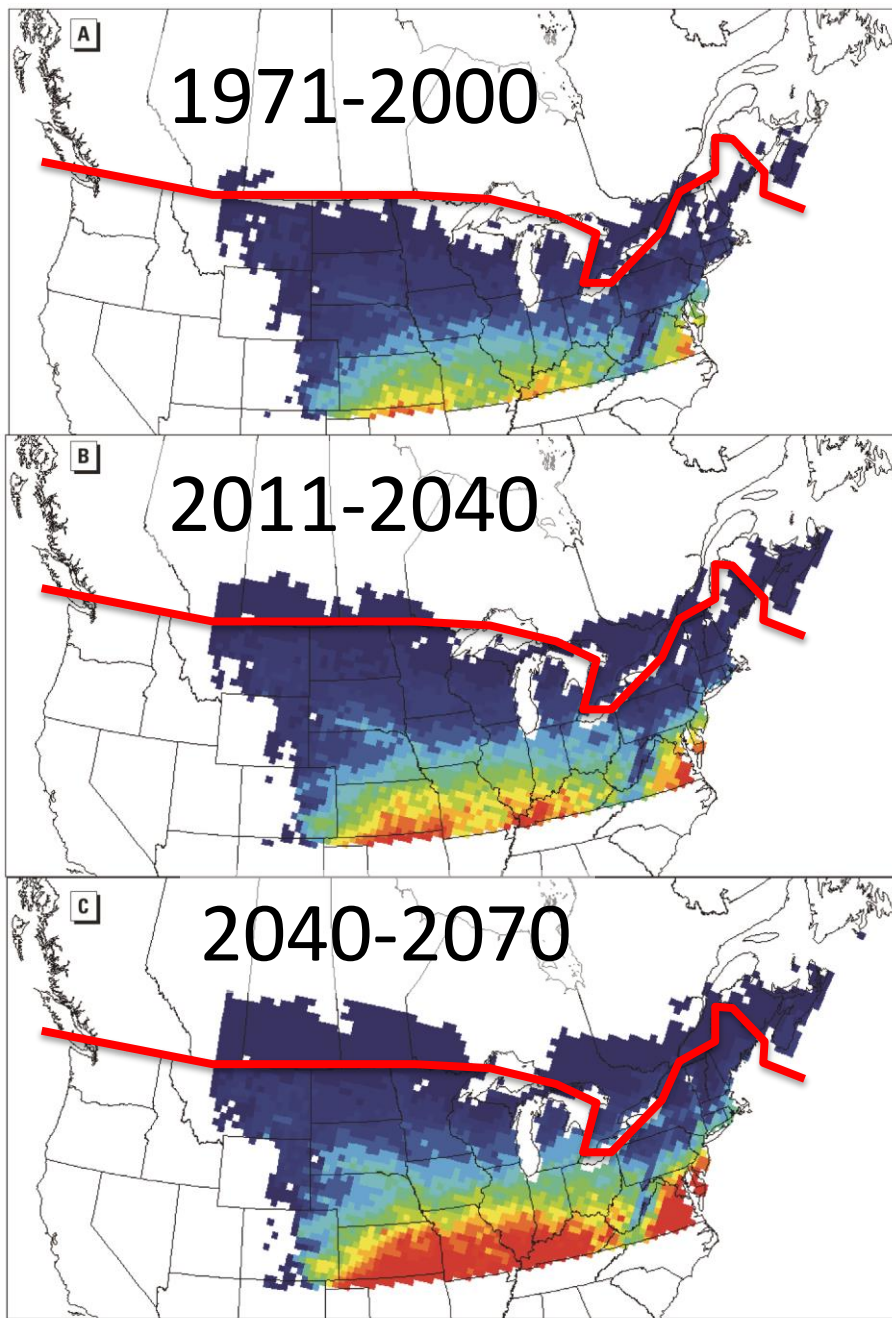
David P. Shorthouse, Anne Bruneau



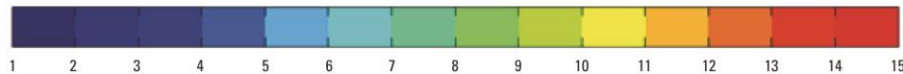
A map of Canada where the southern provinces and territories are highlighted in green, while the northern regions are in light grey. The highlighted areas include British Columbia, Alberta, Saskatchewan, Manitoba, Ontario, Quebec, and parts of the Atlantic provinces and Yukon, Northwest Territories, and Nunavut.

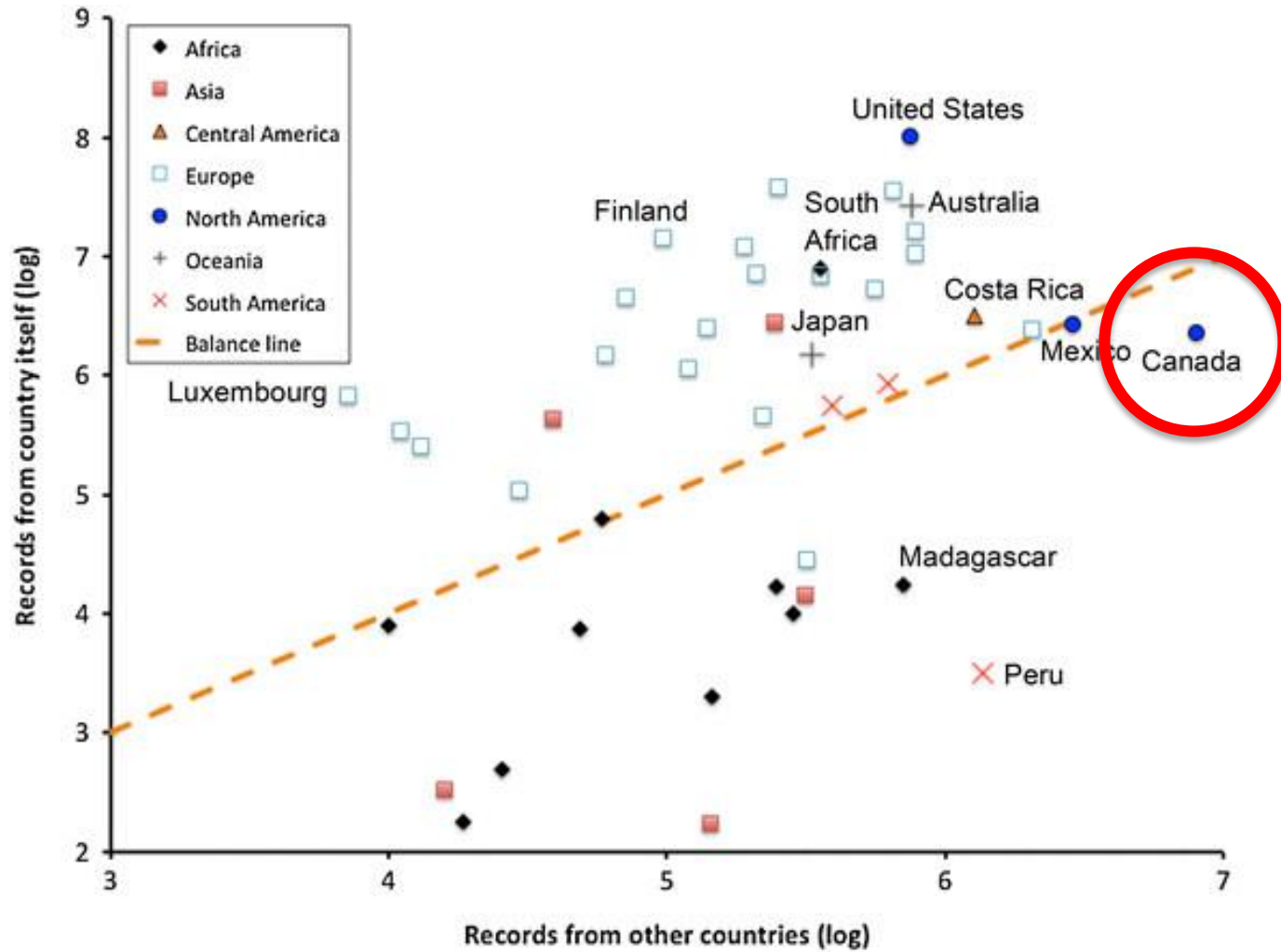
30 collections

Plants, insects and fungi



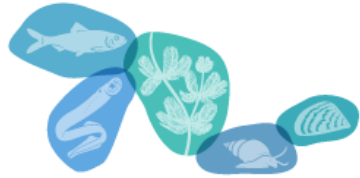
Ogden et al 2014 Environ Health Perspect
doi: 10.1289/ehp.1307799



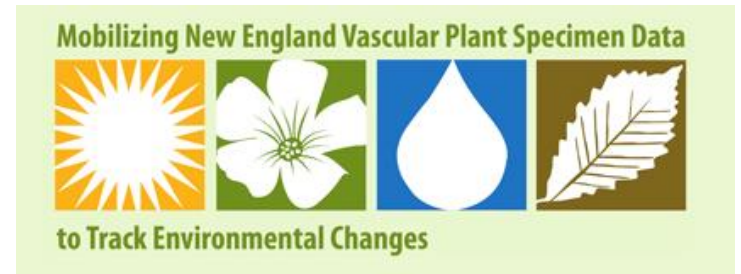
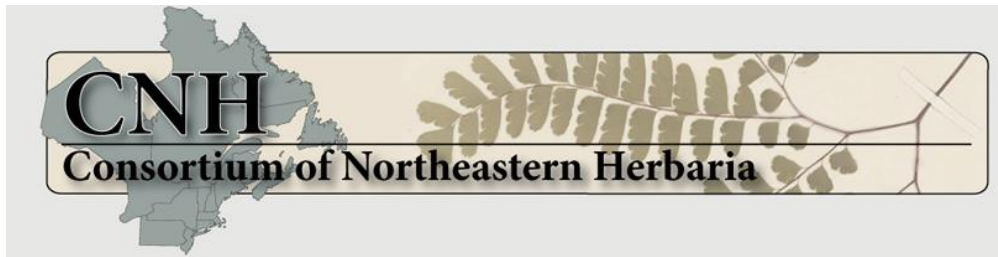


Peterson *et al.* BMC Ecology 2015 15:15 doi:10.1186/s12898-015-0046-8





GREAT LAKES INVASIVES NETWORK



Collaborative Training

Data Sharing, Data Standards
& Demystifying the IPT



GBIF INTEGRATED PUBLISHING TOOLKIT (IPT)

free and open access to biodiversity data

Home

About

Hosted resources available through this IPT

brought to you



	A	B	C	D	E	F	H
1	recordID	mo	dy	yr	peri	plot	
2	1	7	16	1977	1	2	
3	2	7	16	1977	1	3	
4	3	7	16	1977	1	2	
5	4	7	16	1977	1	7	
6	5	7	16	1977	1	3	

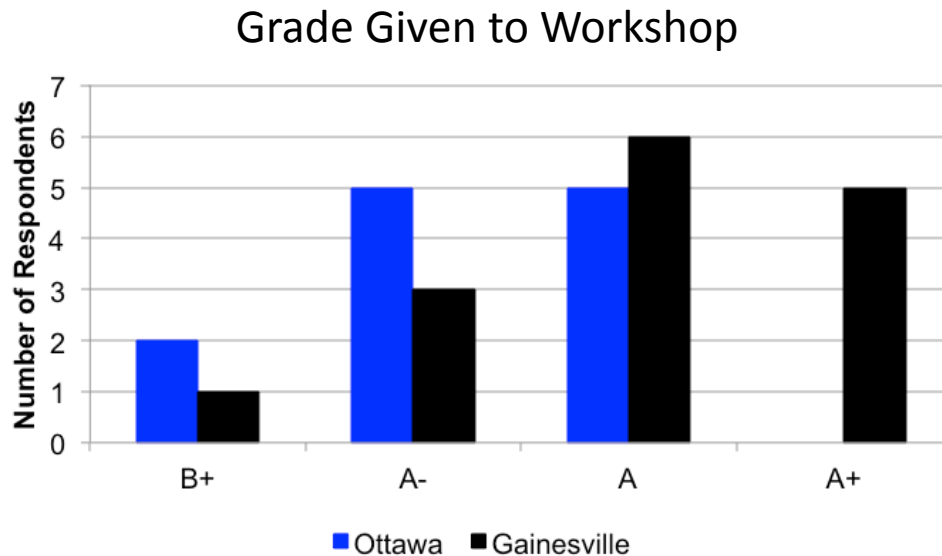


Jan 13-14, 2015



Demystifying the IPT

Attendee Satisfaction



Data license

Use without restriction

bit.ly/cc0-for-data



BOUCHOUT DECLARATION 

The icon depicts a white dome-shaped building with a grid pattern, a bird flying above it, and a small square icon to the left.

Norms of Data Reuse

<http://www.canadensys.net/about/norms>

- Give credit where credit is due
- Be responsible
- Share knowledge
- Respect the data license
- Data publication conditions
- Preferred citations

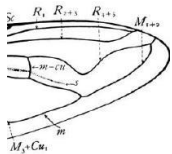
Ver+Ne



Software license

Use without restriction

<https://github.com/Canadensys>



WingLongitude

Unbranded zone for Canadensys,
SiBB, SiBColumbia, SiBUy

<https://github.com/winglongitude>



292,232 Results

(showing only georeferenced records: 209,883)

Map view

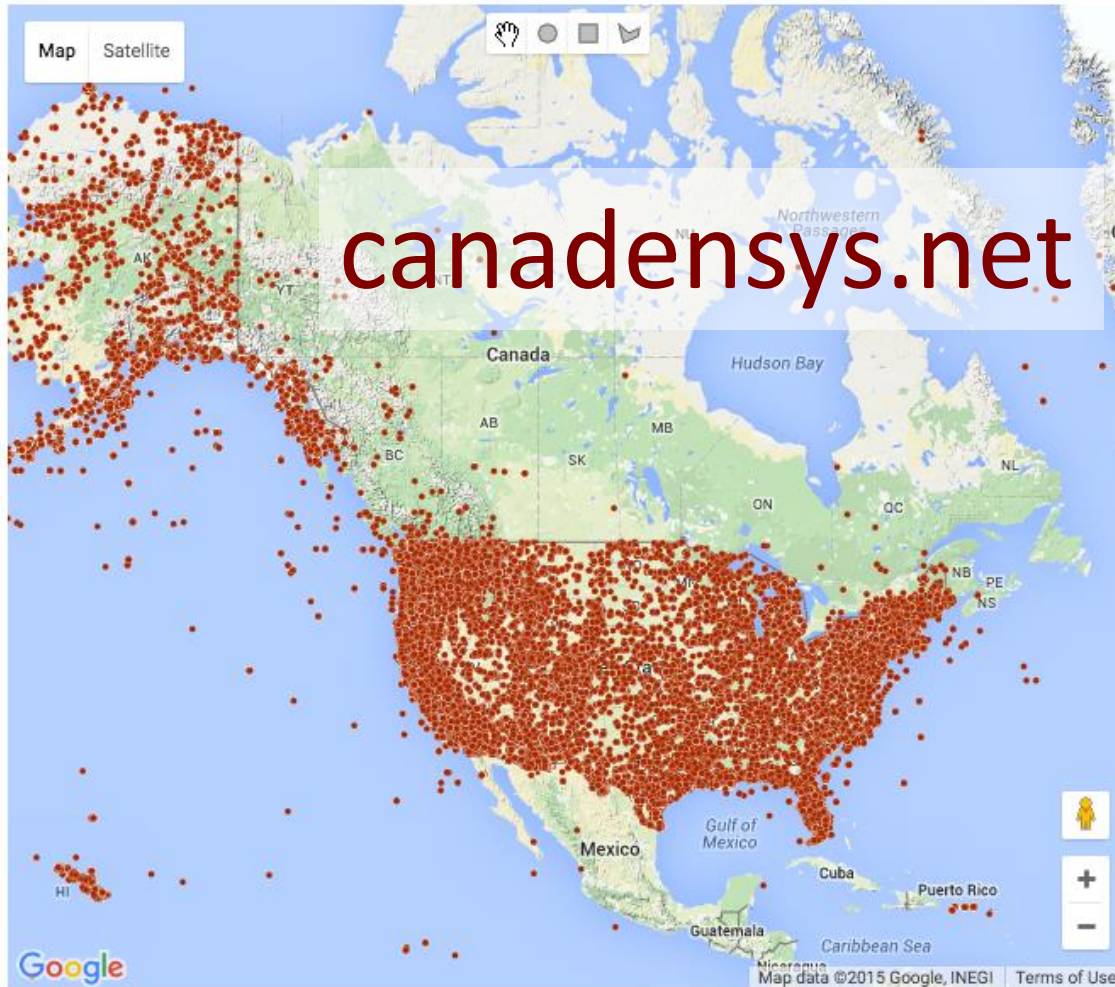
Table view

Stats view

Search

Download

Display



Create a new filter

Country

Filter contains:

Add filter

Canada	1914018
United States	292232
Mexico	71175
Australia	25352
Guyana	23327
Viet Nam	16016
Costa Rica	14109
Colombia	11746
United Kingdom	10534
New Zealand	9392

Current filters

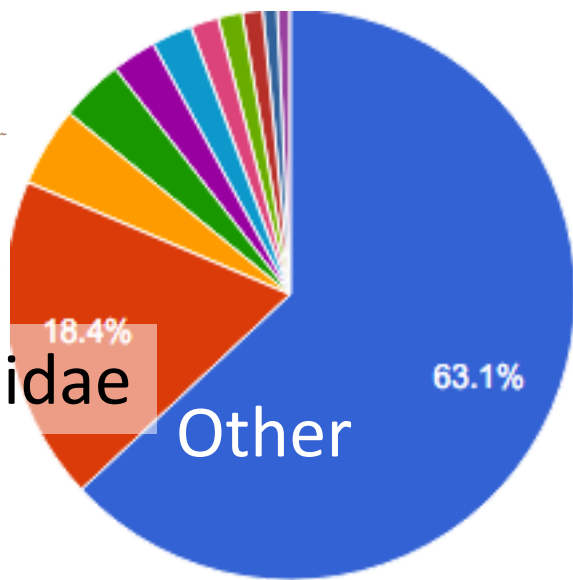
Country

United States (exact)

search current filters

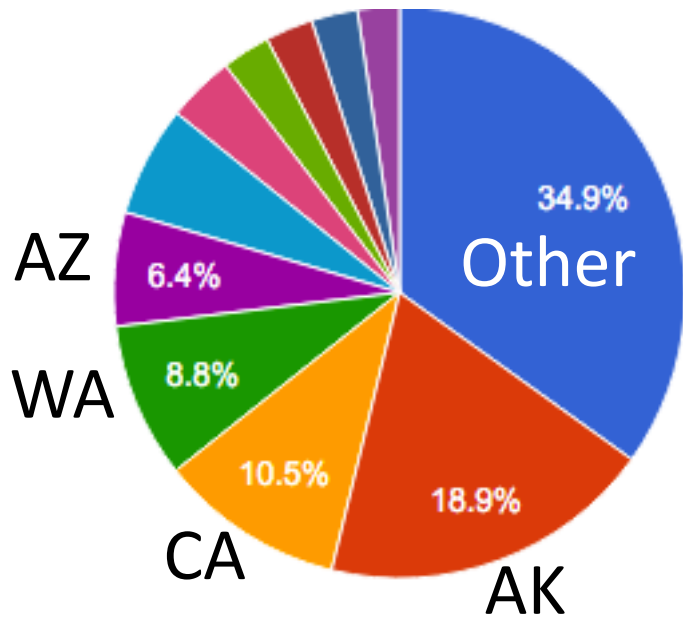


292,232  records



Carabidae

Other



AZ

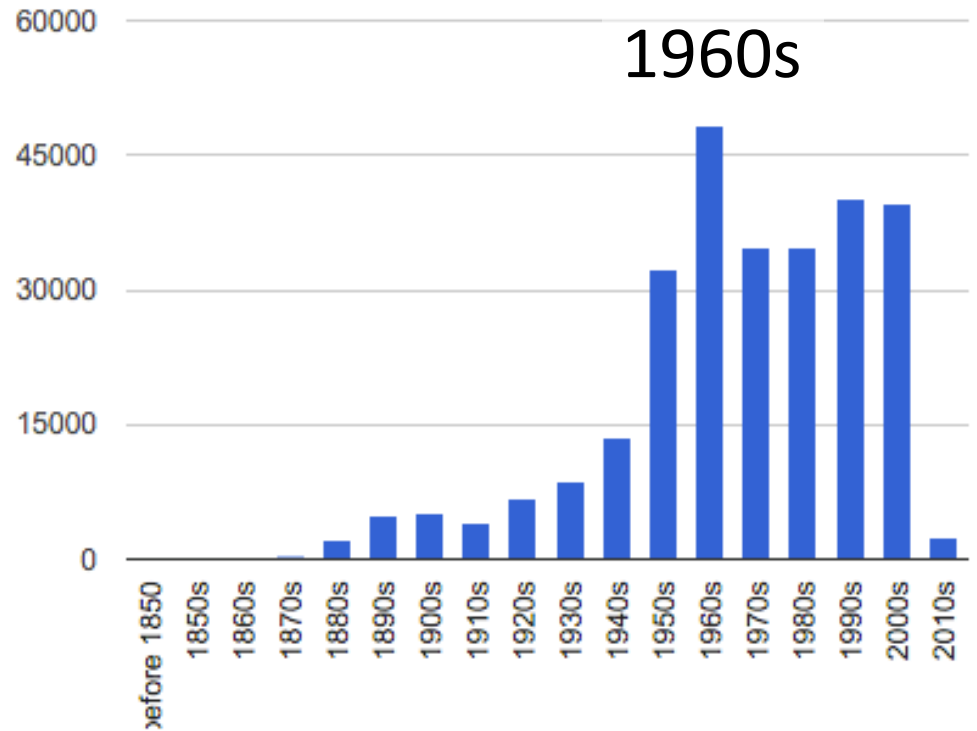
WA

CA

AK

Other

Records per decade



1960s



Leafcutter bee new to science with specimen data on Canadensys

Thursday, 4 April 2013

Dr. **Cory Sheffield**, Research Scientist & Curator of Invertebrate Zoology at the Royal Saskatchewan Museum in Regina, SK had a paper published April 3, 2013 in the journal **ZooKeys** in which he named and described *Megachile chomskyi*. This new species of leafcutter bee is approximately 13mm long, has a relatively long tongue, white pubescence and is named after **Noam Chomsky**, Professor Emeritus in the Department of Linguistics & Philosophy at MIT. The male holotype and female allotype are deposited at the Royal Saskatchewan Museum and were both collected in Winkler Co., Texas.



Male holotype of the newly described bee, *Megachile chomskyi* Sheffield, 2013.
Credit: Cory S. Sheffield (Royal Saskatchewan Museum). Usage Restrictions: CC-BY 3.0.



doi: [10.3897/zookeys.283.4674](https://doi.org/10.3897/zookeys.283.4674)

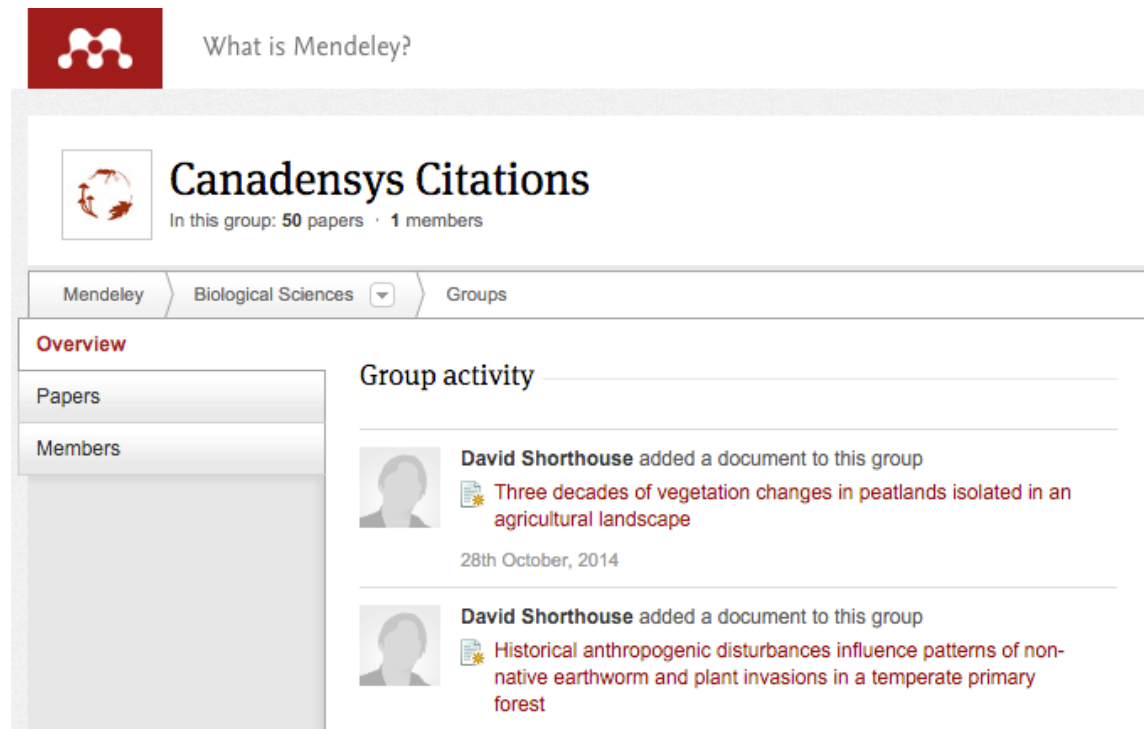


doi: [10.5886/txsd3at3](https://doi.org/10.5886/txsd3at3)



Tracking Citations

<http://bit.ly/mendeley-canadensys>



The screenshot shows the Mendeley interface for a group named "Canadensys Citations". At the top left, there is a red square with the Mendeley logo and the text "What is Mendeley?". Below this, the group's name "Canadensys Citations" is displayed next to a globe icon, with the text "In this group: 50 papers · 1 members" underneath. A navigation bar shows "Mendeley", "Biological Sciences" (with a dropdown arrow), and "Groups". On the left side, there is a sidebar with "Overview" (highlighted in red), "Papers", and "Members". The main content area is titled "Group activity" and lists two recent additions by "David Shorthouse":

- Three decades of vegetation changes in peatlands isolated in an agricultural landscape (dated 28th October, 2014)
- Historical anthropogenic disturbances influence patterns of non-native earthworm and plant invasions in a temperate primary forest



What's Next?

Canadian Biodiversity Observatory
Cyberinfrastructure



Taxonomy
Traits
Interactions
Distributions

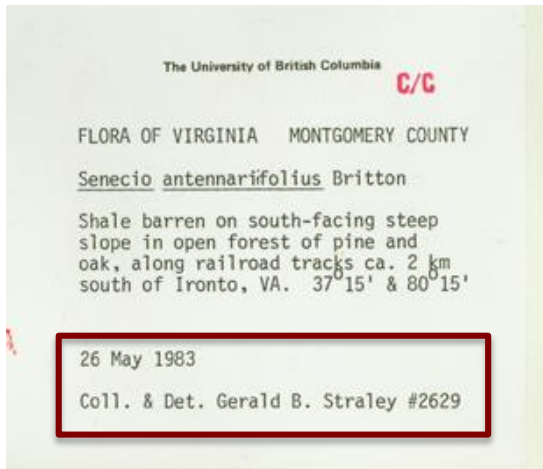


ORCID

Connecting Research
and Researchers



Human Identity & Expert Networks



Top Determiners

1. T.A. Wheeler (53,656)
2. J. Forrest (5,147)
3. S.M. Paiero (2,463)
4. J. Mlynarek (1,824)
5. O. Lonsdale (412)
6. A. Solecki (366)
7. H.J. Cumming (175)
8. F. Beaulieu (151)
9. Valerie Levesque-Beaudin (111)
10. S. Boucher (102)

ORCID

Connecting Research and Researchers

#AltMetrics

