



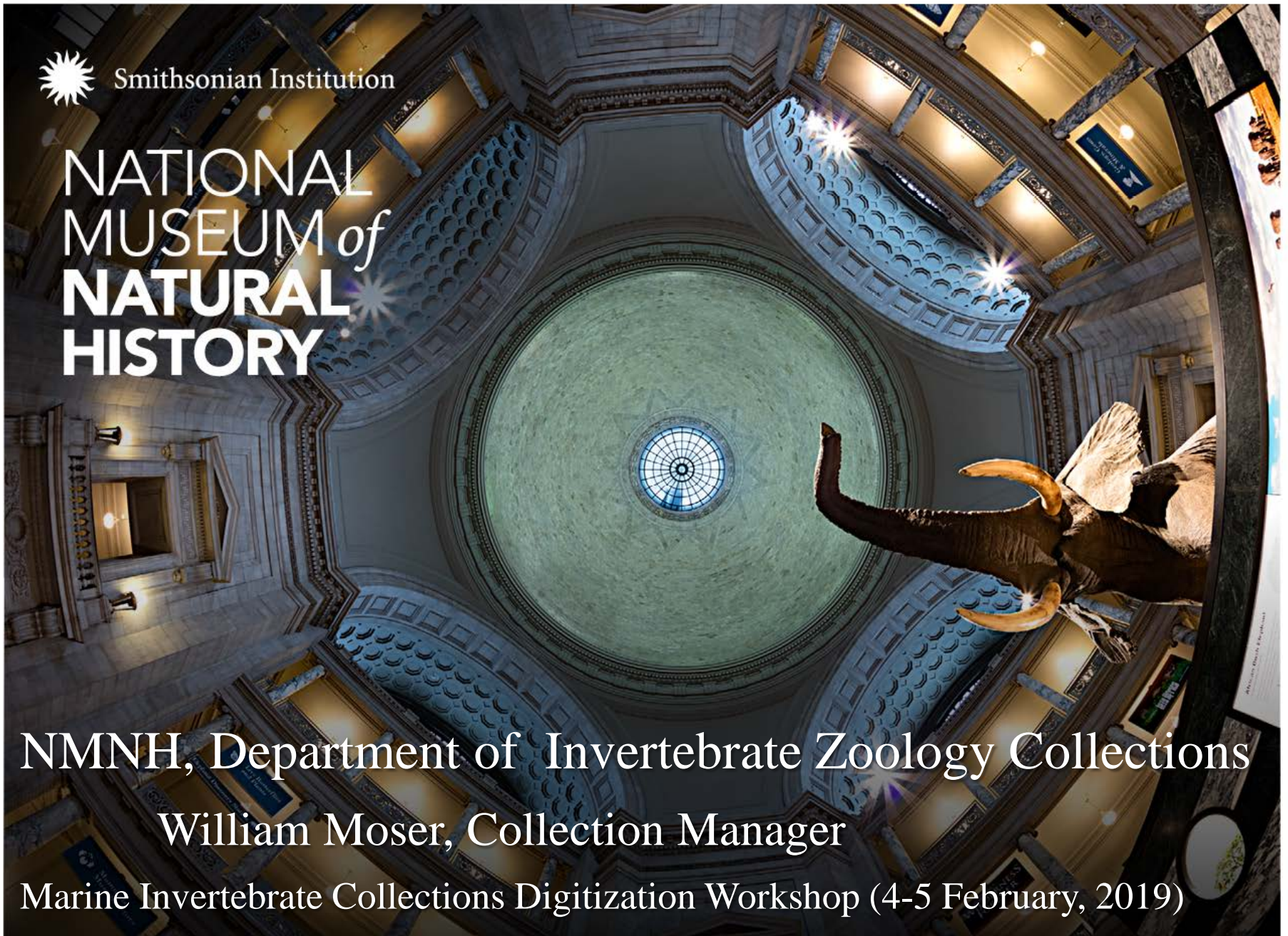
Smithsonian Institution

NATIONAL MUSEUM *of* NATURAL HISTORY

NMNH, Department of Invertebrate Zoology Collections

William Moser, Collection Manager

Marine Invertebrate Collections Digitization Workshop (4-5 February, 2019)



Department of Invertebrate Zoology Collections

50 Million Specimens

129,000 + unique taxa
representing 60 Phyla
in 4 Kingdoms

Types: 83,900 type lots of 31,000 + species

Collection Physical Size

MSC Pod 5: **18.1 linear miles** of shelving and **95** steel tanks

MSC Pod 2: 250 cases with 2,500 drawers

NHB: 1,700 cases with 14,000 drawers

} 2.3 acres of dry spm storage

And approximately 500,000 glass slides; NMNH Biorepository access

20 liquid nitrogen freezers (-190°C & -150°C)
58 mechanical freezers (-80°C & -30°C)

Invertebrate Zoology Collections Management

- IZ CM is managing the largest collection in NMNH (based upon number of specimens)
- Average of 200 visitors a year (MSC)
- Cataloging over 150,000 lots per year (federal, trust and contract staff)
- Processing approximately 640 transactions (loans, borrows, deaccessions, acquires) a year



Smithsonian

Staff

- 5 NMNH federal Research Zoologists (curators); recruiting 2; 3 NOAA Adjunct Zoologists
6 ½ Research Assistants (2 of which are Molecular Support Scientists)
- 1 CM, 6 Federal Museum Specialists or Museum Technicians; 1 NOAA Tech, fed ½ time
1 GGI/ARMS funded Museum Technician; 1 general Museum Technician contractor
Volunteer collection management (3-8 volunteers)



Current IZ Collection Management Projects

Federal Partnerships (BOEM, NCI, NOAA, USDA)

- Bureau of Ocean Energy Management (BOEM) award (DOI-BOEM funded, 5 trust staff)
- National Cancer Institute (NCI) award (1 contractor, part time)
- NOAA Collection Management (IAA proposed for 1 contractor)
- USDA Parasites, collection management (USDA-funded, was 2 contractors; updating agreement)

Digitization projects

Smithsonian funded (CCPF, CIS, CP, GGI)

- Mollusca Inventory (3-years, 6 contractors per year)
 - Mollusca Move Prep (data update and standardization, 1 contractor)
- Brachyura Inventory (3-years, 2-3 contractors per year; applied for funding for Year 4)
- Dry Porifera Inventory (1 contractor)
- R/V Albatross Inventory (1 contractor)
- USDA Parasites (validate & import data, curation, rearrangement (7 contractors)
- Station Data Digitization (1 contractor)



Smithsonian

Upcoming Projects

- Dry Mollusk reorganization and move
- Fluid Parasite recuration and reorganization
- MSC glass slide reorganization and move
- Processing and incorporation of ULL Crustacean collection (Felder donation)
- Digitization of NCI collection
- Continued BOEM collection processing (incoming barcoding and tissue samples)

Goals

- IZ Backlog Inventory and Exemplar Data Capture
- Digitization of additional analog collection station data
 - Shared library of digitized station data
- Digitization and imaging of glass slides during move/reorganization
- Shared purchasing power of collection supplies





Smithsonian
National Museum of Natural History