

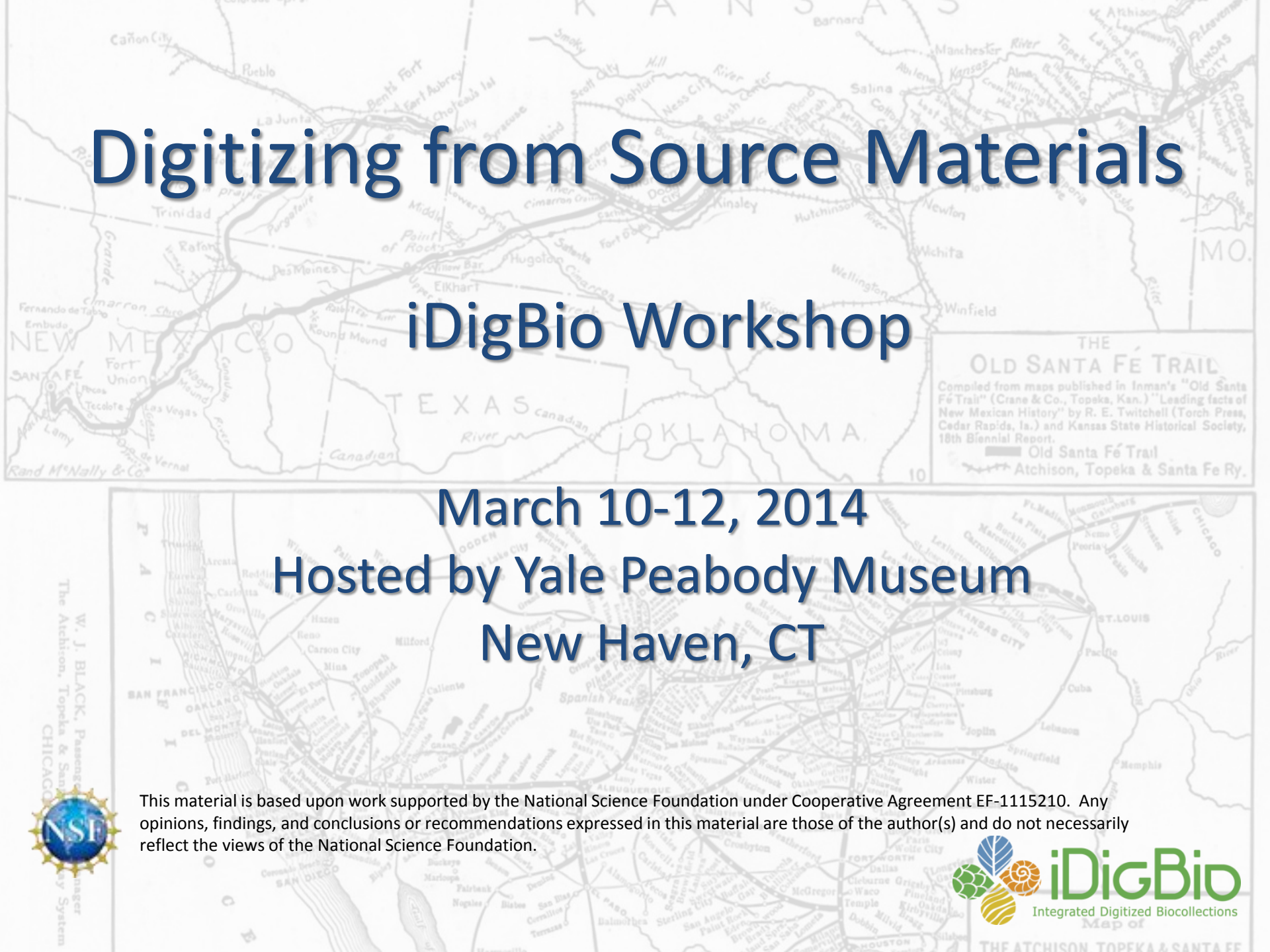
Digitizing from Source Materials

iDigBio Workshop

March 10-12, 2014

Hosted by Yale Peabody Museum
New Haven, CT

This material is based upon work supported by the National Science Foundation under Cooperative Agreement EF-1115210. Any opinions, findings, and conclusions or recommendations expressed in this material are those of the author(s) and do not necessarily reflect the views of the National Science Foundation.





"It keeps me from looking at my phone every two seconds."

Acknowledgments

Yale Peabody Museum of Natural History

Tim White, Bonnie Mahmood, Larry Gall

iDigBio

Greg Riccardi (PI), Gil Nelson, Deb Paul, Kevin Love, Libby Ellwood

Planning Committee

Tim White, Barbara Thiers, Rusty Russell,

Christina Fidler, Larry Gall, Michelle Koo, James Macklin, Carolyn Sheffield

Gil Nelson, Deb Paul

Scribes

Margaret Landis, Christina Fidler, Sarah Schmits, Paul Mayer, ???

This material is based upon work supported by the National Science Foundation under Cooperative Agreement EF-1115210. Any opinions, findings, and conclusions or recommendations expressed in this material are those of the author(s) and do not necessarily reflect the views of the National Science Foundation.



Meeting Logistics

Wiki:

(<https://www.idigbio.org/wiki/index.php/Digitizing-From-Source-Materials>)

Twitter: #origisource

Adobe Connect (Kevin Love): <http://idigbio.adobeconnect.com/sourcematerials>

Being broadcast and recorded

Be observant of remote audience; use microphone to make comments, ask questions

Chat box for remote participants

Collaborative Documents Folder: <http://tinyurl.com/smcollab>

Efficiency: Starting on time, staying on track, but providing flexibility

Meals: Breakfast and lunch provided; evening on your own; no receipts required for meals

Attendees: <http://tinyurl.com/srcmatatt>

This material is based upon work supported by the National Science Foundation under Cooperative Agreement EF-1115210. Any opinions, findings, and conclusions or recommendations expressed in this material are those of the author(s) and do not necessarily reflect the views of the National Science Foundation.



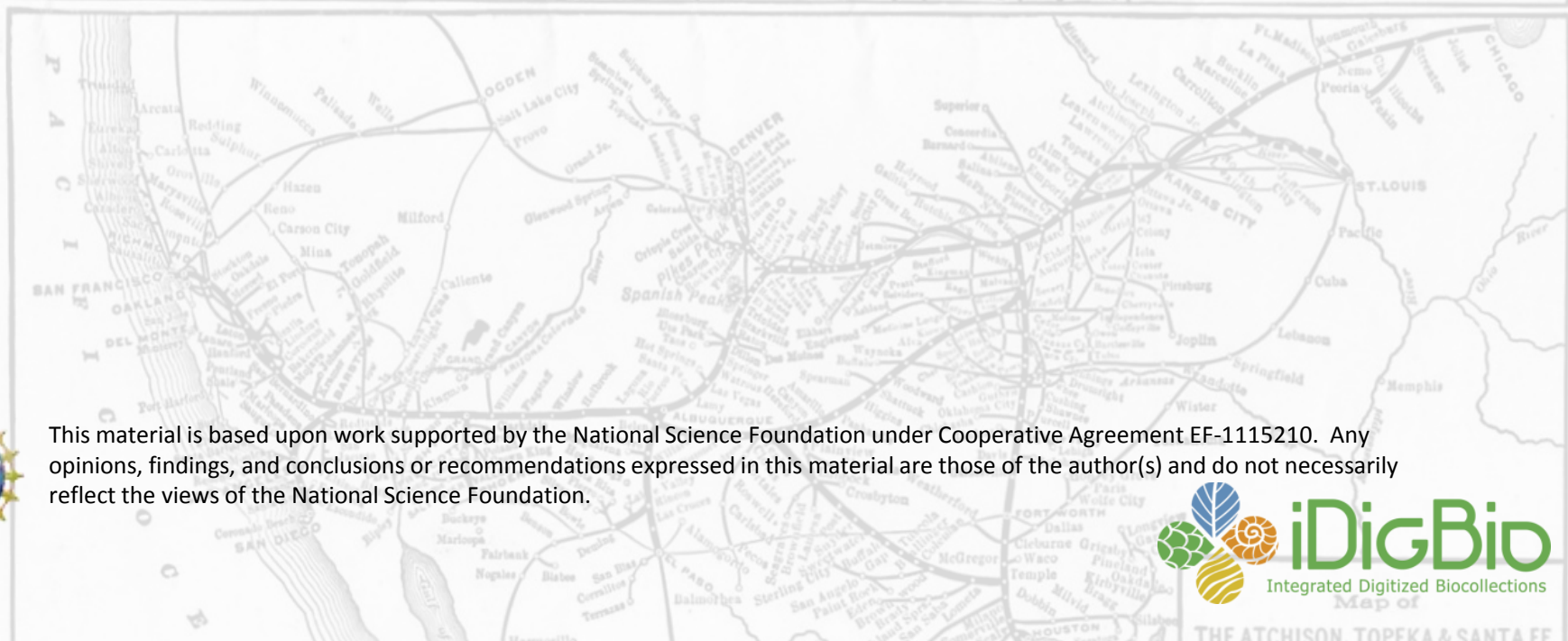
Workshop Goals

- Review Existing Projects
- Study Workflows
- Evaluate Outcomes
- Identify Best Practices
- Build Use Cases
- SPNHC 2015 - Gainesville

This material is based upon work supported by the National Science Foundation under Cooperative Agreement EF-1115210. Any opinions, findings, and conclusions or recommendations expressed in this material are those of the author(s) and do not necessarily reflect the views of the National Science Foundation.



Workshop Methodology

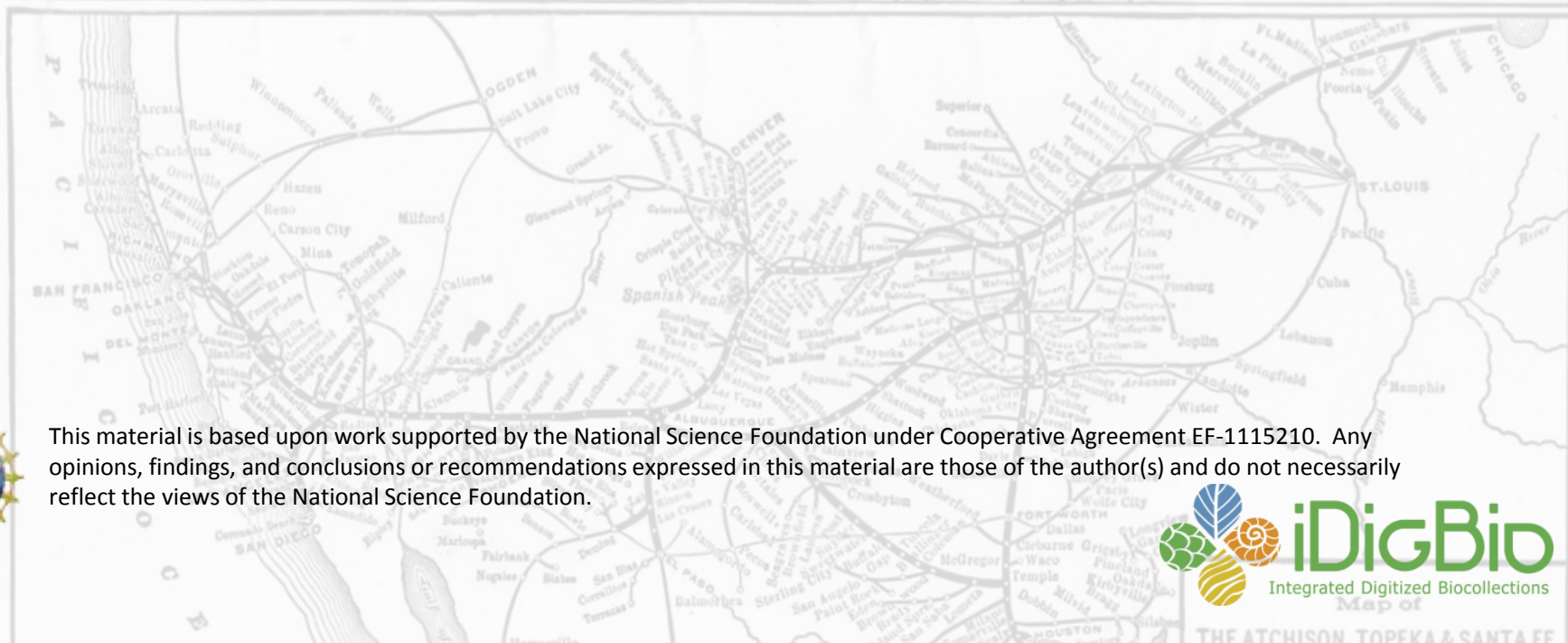
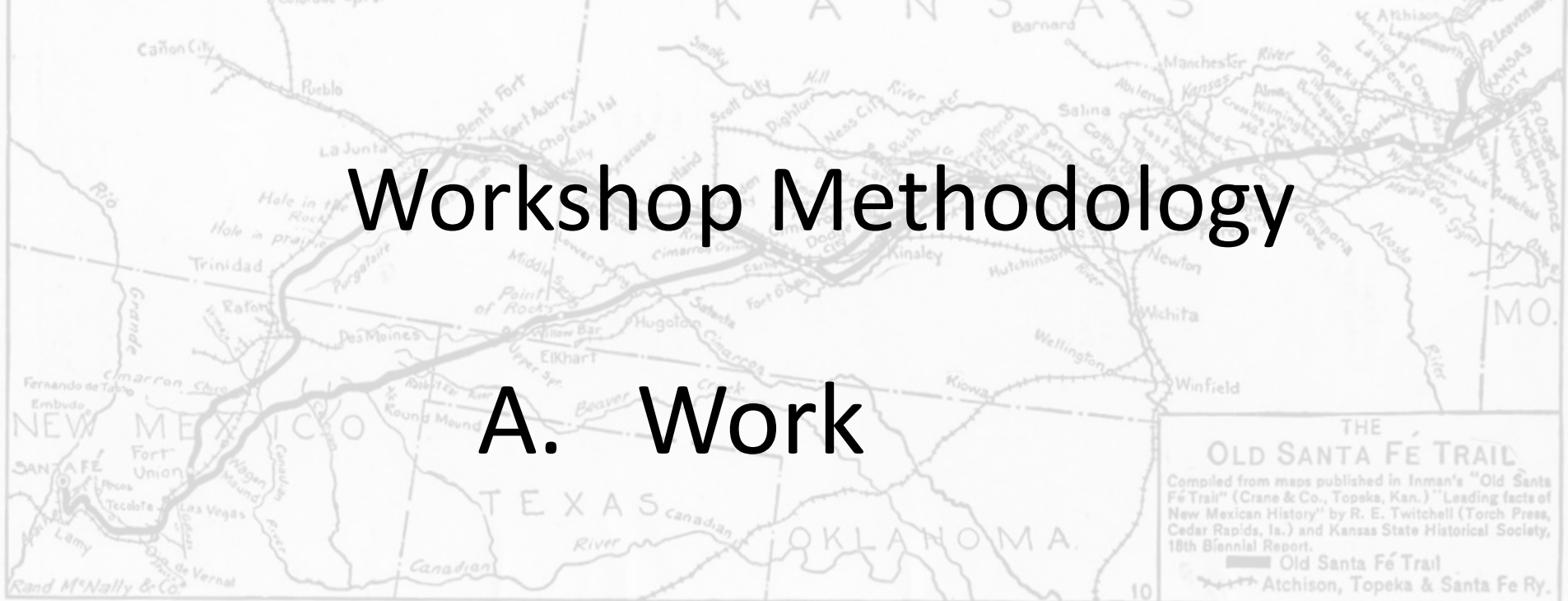


This material is based upon work supported by the National Science Foundation under Cooperative Agreement EF-1115210. Any opinions, findings, and conclusions or recommendations expressed in this material are those of the author(s) and do not necessarily reflect the views of the National Science Foundation.



Workshop Methodology

A. Work



This material is based upon work supported by the National Science Foundation under Cooperative Agreement EF-1115210. Any opinions, findings, and conclusions or recommendations expressed in this material are those of the author(s) and do not necessarily reflect the views of the National Science Foundation.



Workshop Methodology

A. Work

B. Write

THE
OLD SANTA FÉ TRAIL
Compiled from maps published in Inman's "Old Santa FÉ Trail" (Crane & Co., Topeka, Kan.) "Leading facts of New Mexican History" by R. E. Twitchell (Torch Press, Cedar Rapids, Ia.) and Kansas State Historical Society, 18th Biennial Report.
— Old Santa FÉ Trail
Atchison, Topeka & Santa Fe Ry.

This material is based upon work supported by the National Science Foundation under Cooperative Agreement EF-1115210. Any opinions, findings, and conclusions or recommendations expressed in this material are those of the author(s) and do not necessarily reflect the views of the National Science Foundation.



Workshop Methodology

A. Work

B. Write

C. Return to A.

This material is based upon work supported by the National Science Foundation under Cooperative Agreement EF-1115210. Any opinions, findings, and conclusions or recommendations expressed in this material are those of the author(s) and do not necessarily reflect the views of the National Science Foundation.



Event

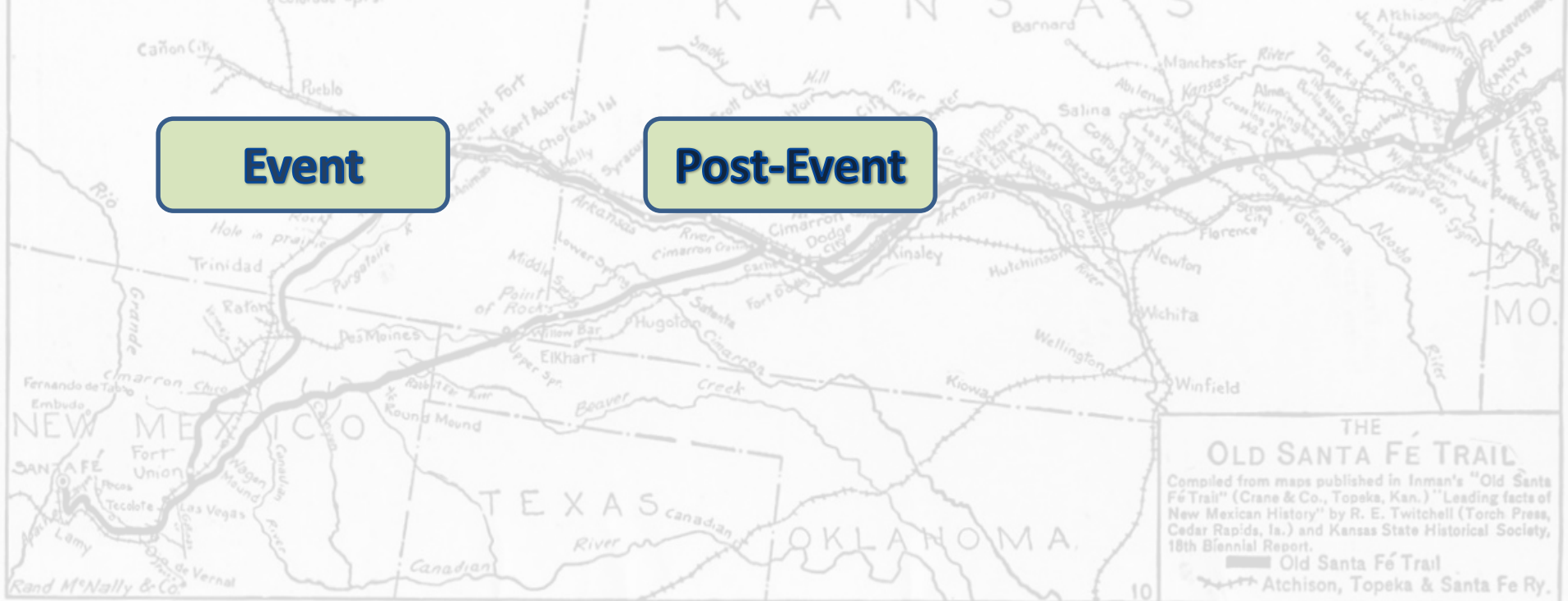


W. J. BLACK, Passenger Traffic Manager
 The Atchison, Topeka & Santa Fe Railway System
 CHICAGO



Event

Post-Event



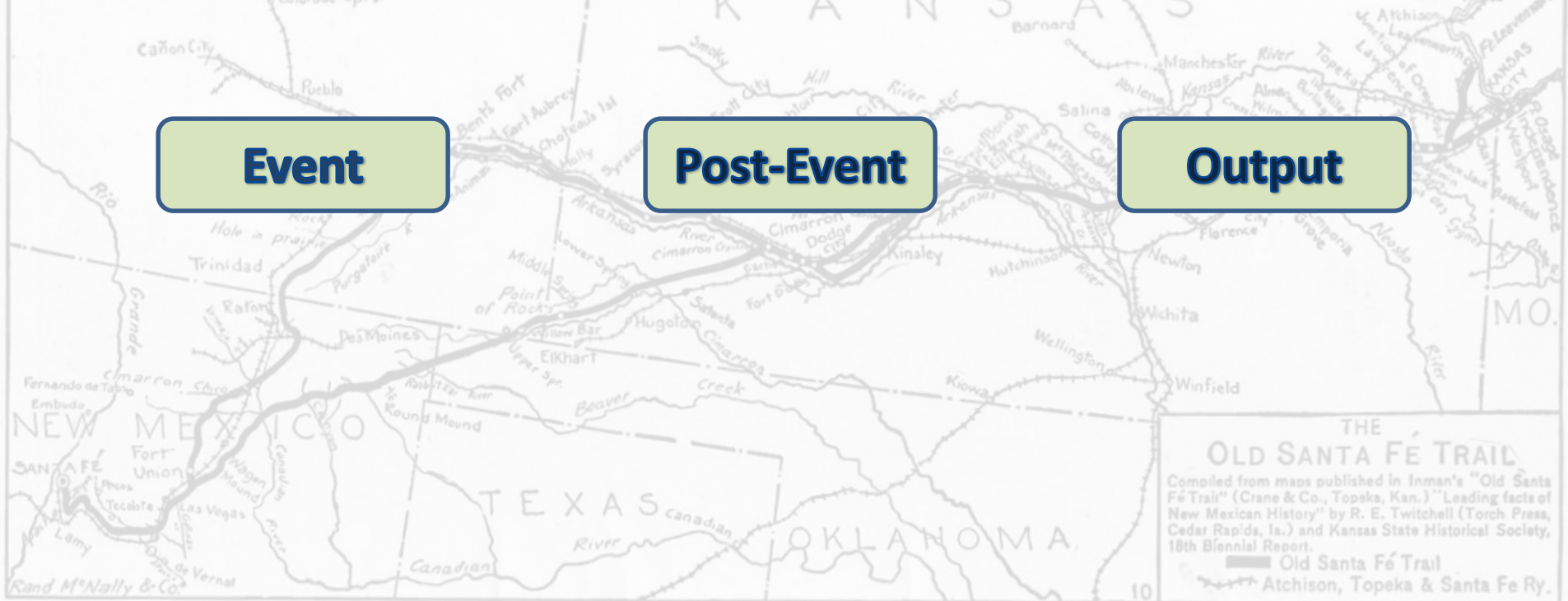
W. J. BLACK, Passenger Traffic Manager
The Atchison, Topeka & Santa Fe Railway System
CHICAGO



Event

Post-Event

Output





Event

Post-Event

Output

Field Books
Journals/Diaries
Collection Lists
Logbooks
Photographs
Drawings
Video/Audio
Observations
Maps/Charts
Correspondence
Tags/Labels/Slips
Preparation Notes
Finance/Receipts

THE OLD SANTA FÉ TRAIL

Compiled from maps published in Inman's "Old Santa Fé Trail" (Crane & Co., Topeka, Kan.) "Leading facts of New Mexican History" by R. E. Twitchell (Torch Press, Cedar Rapids, Ia.) and Kansas State Historical Society, 18th Biennial Report.

— Old Santa Fé Trail
— Atchison, Topeka & Santa Fe Ry.

Map of

THE ATCHISON TOPEKA & SANTA FE

Event

Field Books
Journals/Diaries
Collection Lists
Logbooks
Photographs
Drawings
Video/Audio
Observations
Maps/Charts
Correspondence
Tags/Labels/Slips
Preparation Notes
Finance/Receipts

Post-Event

Accession Records
Card Catalog
Ledgers/Notebooks
Specimen Cards
Research Notes
Illustrations
Survey inventories
Social Media Content
Derivative Objects
Derivative Data
Correspondence
Interviews
Oral Histories

Output



THE
OLD SANTA FÉ TRAIL
Compiled from maps published in Inman's "Old Santa FÉ Trail" (Crane & Co., Topeka, Kan.) "Leading facts of New Mexican History" by R. E. Twitchell (Torch Press, Cedar Rapids, Ia.) and Kansas State Historical Society, 18th Biennial Report.
— Old Santa FÉ Trail
Atchison, Topeka & Santa Fe Ry.

Map of
THE ATCHISON TOPEKA & SANTA FE

Event

Field Books
Journals/Diaries
Collection Lists
Logbooks
Photographs
Drawings
Video/Audio
Observations
Maps/Charts
Correspondence
Tags/Labels/Slips
Preparation Notes
Finance/Receipts

Post-Event

Accession Records
Card Catalog
Ledgers/Notebooks
Specimen Cards
Research Notes
Illustrations
Survey inventories
Social Media Content
Derivative Objects
Derivative Data
Correspondence
Interviews
Oral Histories

Output

Expedition Reports
Technical Reports
Site Reports
Itineraries
Publications
Unpublished Mss
Oral Presentations
Dissertation/Theses
Websites

W. J. BLACK, Passenger Traffic Manager
The Atchison, Topeka & Santa Fe Railway System
CHICAGO

Map of
THE ATCHISON TOPEKA & SANTA FE

Definition

Any object possessing information that documents a specimen collecting event, an observation, or the circumstances surrounding such events.

This material is based upon work supported by the National Science Foundation under Cooperative Agreement EF-1115210. Any opinions, findings, and conclusions or recommendations expressed in this material are those of the author(s) and do not necessarily reflect the views of the National Science Foundation.

