



Recruiting & Managing Volunteers in Small Collections

Melissa Islam

Denver Botanic Gardens

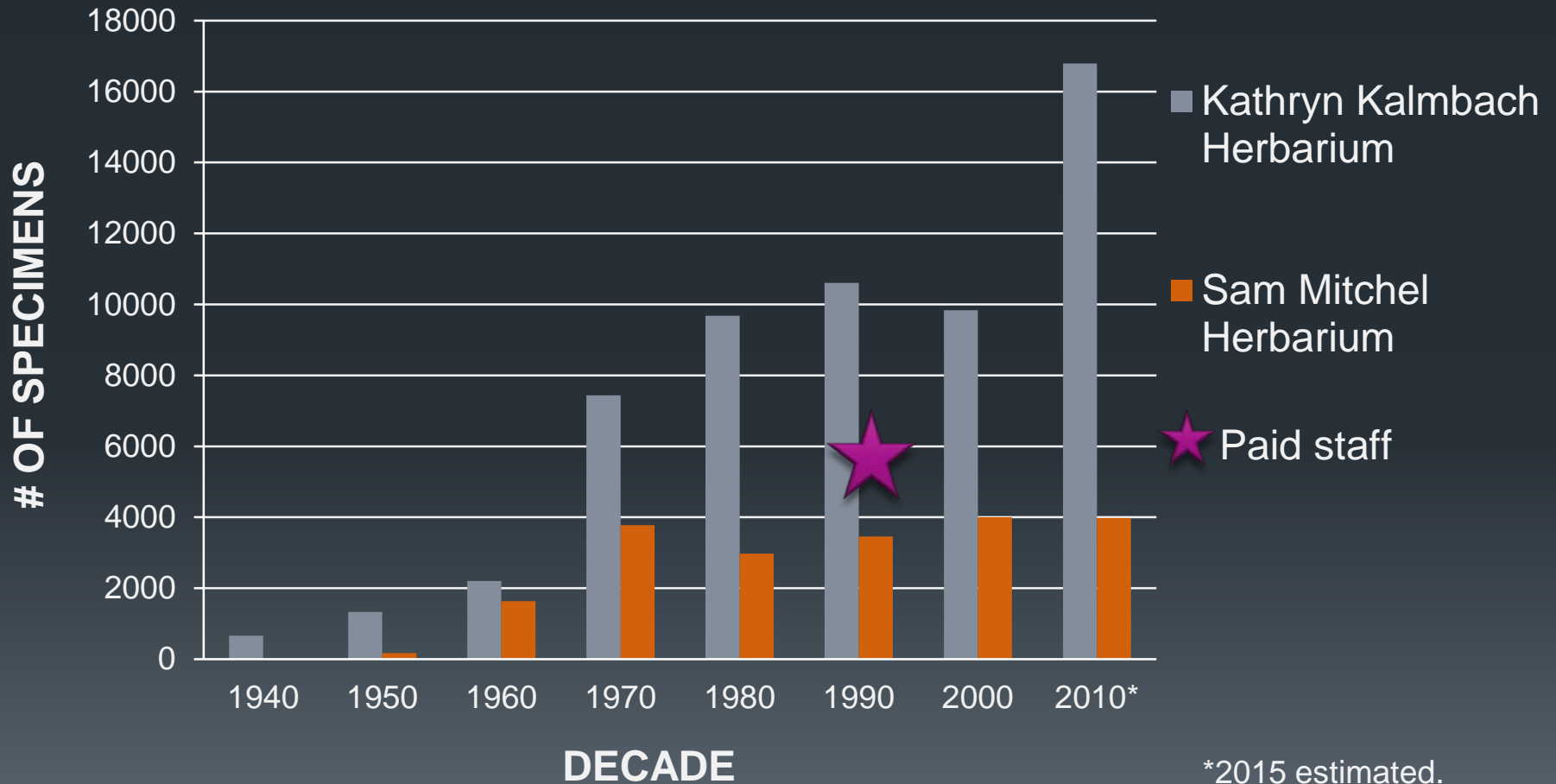
Denver Botanic Gardens



Denver Botanic Gardens

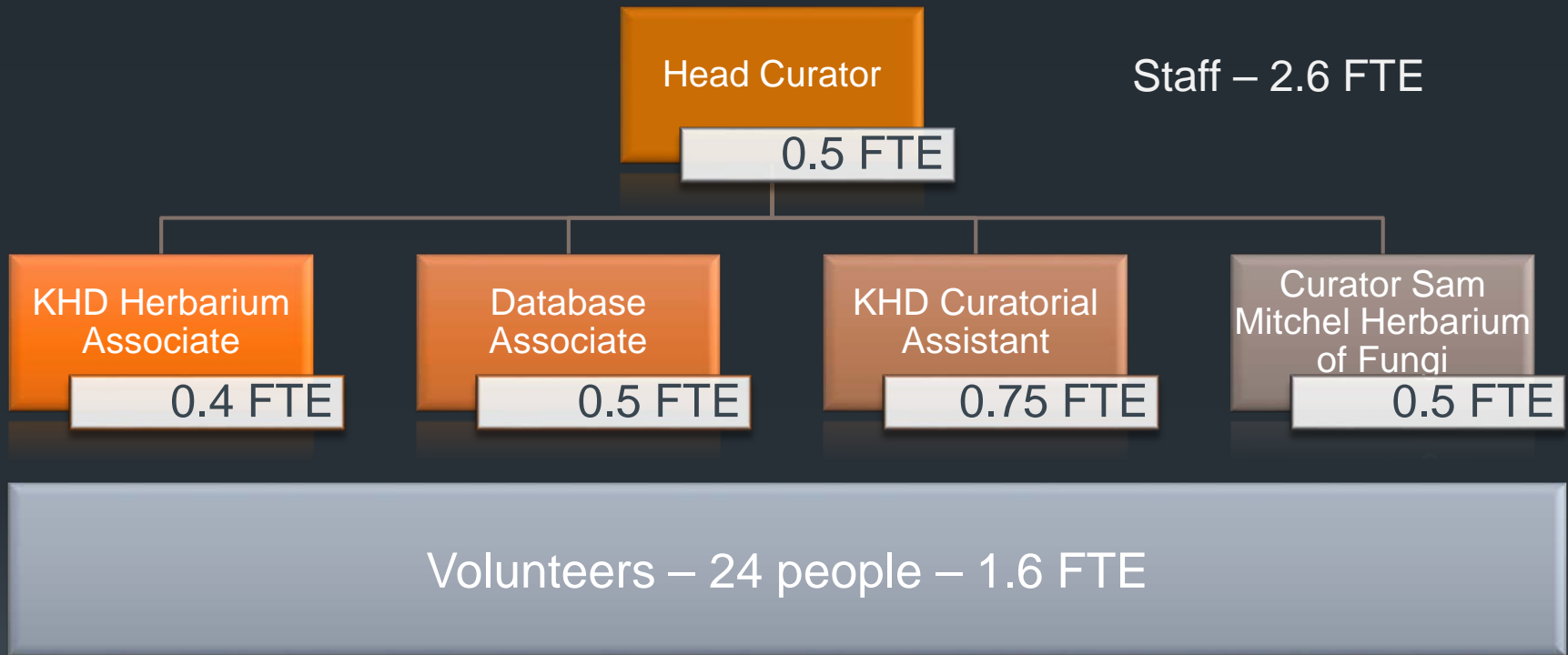


OF SPECIMENS ADDED BY DECADE



*2015 estimated.

Denver Botanic Gardens



Contributions

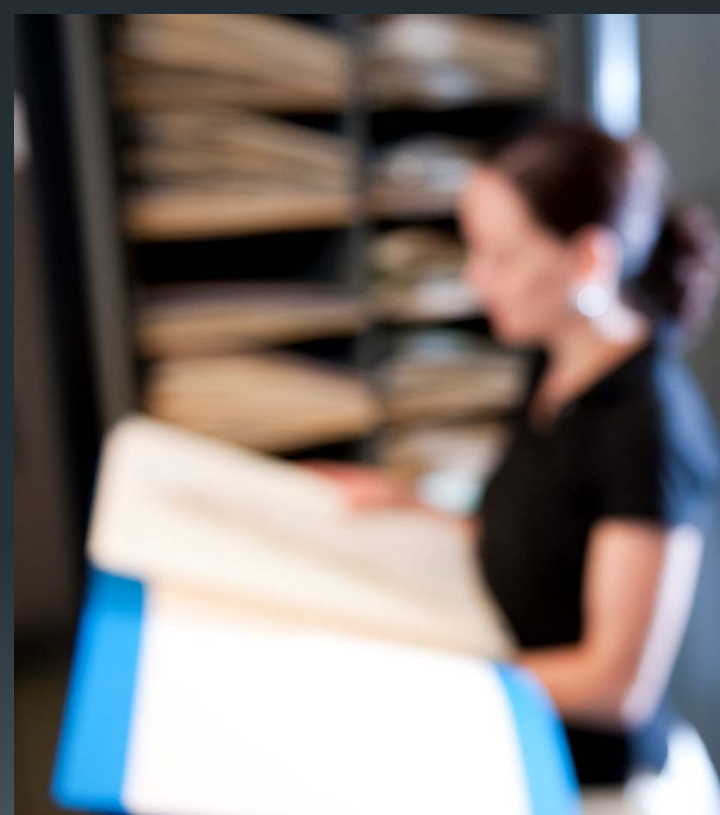
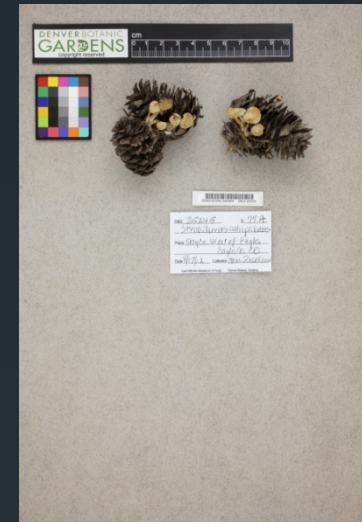
- Participate in floristic surveys
- Process specimens
- Image specimens
- Database from images
- Database backlog
- Georeference
- Pest management
- Provide public outreach
- Add phenology to digitized collection
- Identification – especially fungi
- Write keys to major fungal genera



Volunteers



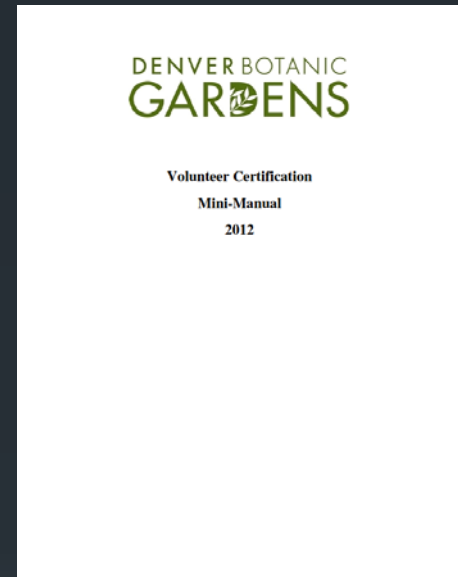
Volunteers



Volunteer Certification

■ Objective

- Reinforce importance
- Instill flexibility
- Independence
- Consistently trained
- Reduce staff input
- Recognize value



Volunteer Certification

- **Certification**

- Science in what we do
- Handling specimens, general herbarium rules
- Review main tasks
- Digitization



no specimens were harmed during
photographing...

Objective - Impact

Reinforce importance

Increased motivation

Instill flexibility

Shift as collection needs shift

Independence

Work during field season

Fewer staff interruptions

Consistently trained

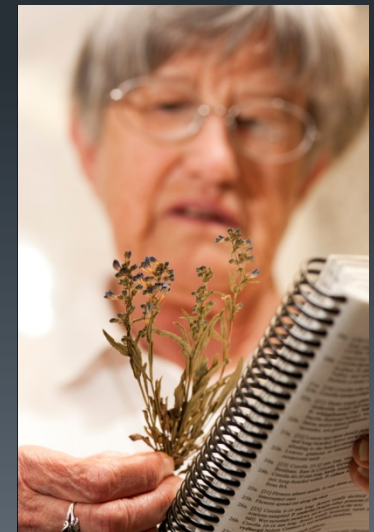
Produce higher quality

Reduce staff's time

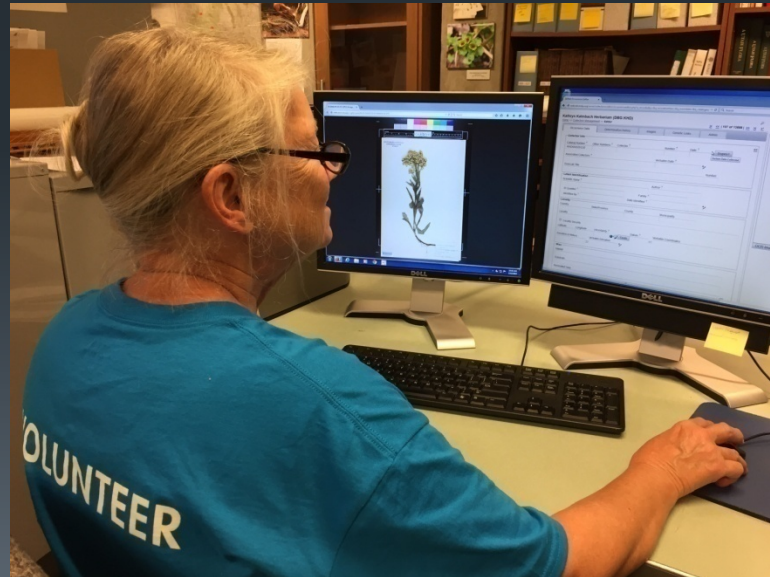
Yes! And No..see next slide

Recognize value

Increased motivation



Collections – Number One



Collections – Number One

■ Accomplishments

- Image 54,000 plant specimens in <9 months
- Database and process legacy collections (1000) in one year
- Repatriate specimens (1970s - 80s)
- Georeference – quality check (28,000)
- Phenology – 6,700
- Digitazation – all activities



Collections – Number One



Collections – Number One



- Thoughtful recruitment
 - Job Descriptions
 - Interviews
 - Expectations
- Shadow trained volunteers
- Intense training with staff, questions encouraged
- **Recognition!**

Questions!

Acknowledgments

Denver Botanic Gardens Herbarium Team

Vera Evenson – Sam Mitchel Herbarium of Fungi

Richard Levy – Dept. Database Associate

Pam Regensberg – KHD Curatorial Assistant

Janet Wingate – Former KHD Curator, Herbarium Associate

All past and current volunteers!